

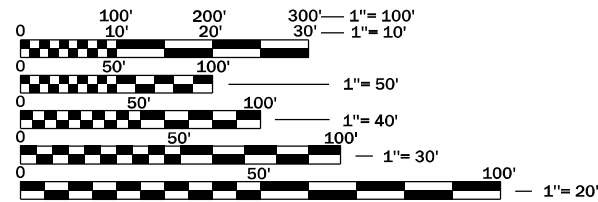
INDEX OF SHEETS

- 1 . COVER SHEET
- 2 . GENERAL NOTES
- 3 - 4 . SUMMARY OF QUANTITIES
- 5 . TYPICAL SECTIONS
- 6 . SCHEDULES
- 7 . TRAFFIC CONTROL AND PROTECTION, STANDARD 701400
- 8 . PLAN DETAILS
- 9 - 10 . CLASS A PATCHING DETAILS
- 11 . PAVEMENT MARKING

STANDARDS

- 000001-08 STANDARD SYMBOLS, ABBREVIATIONS AND PATTERNS
- 001001-02 AREAS OF REINFORCEMENT BARS
- 001006 DECIMAL OF AN INCH AND OF A FOOT
- 701101-05 OFF-ROAD OPERATIONS, MULTILANE, 15' (4.5 m) TO 24" (600 mm) FROM PAVEMENT EDGE
- 701106-02 OFF-ROAD OPERATIONS, MULTILANE, MORE THAN 15' (4.5 m) AWAY
- 701401-12 LANE CLOSURE, FREEWAY/EXPRESSWAY
- 701426-09 LANE CLOSURE, MULTILANE INTERMITTENT OR MOVING OPERATION, FOR SPEEDS ≥ 45 MPH
- 701428-01 TRAFFIC CONTROL, SETUP AND REMOVAL, FREEWAY/EXPRESSWAY
- 701901-08 TRAFFIC CONTROL DEVICES
- 420001-09 PAVEMENT JOINTS
- 442001-04 CLASS A PATCHES
- 780001-05 TYPICAL PAVEMENT MARKINGS

PROJECT LOCATION
M.M. 42.6 & M.M. 42.9
NEAR LOSTANT



FULL SIZE PLANS HAVE BEEN PREPARED USING STANDARD ENGINEERING SCALES. REDUCED SIZED PLANS WILL NOT CONFORM TO STANDARD SCALES. IN MAKING MEASUREMENTS ON REDUCED PLANS, THE ABOVE SCALES MAY BE USED.

J.U.L.I.E.
 JOINT UTILITY LOCATION INFORMATION FOR EXCAVATION
 1-800-892-0123
 OR 811

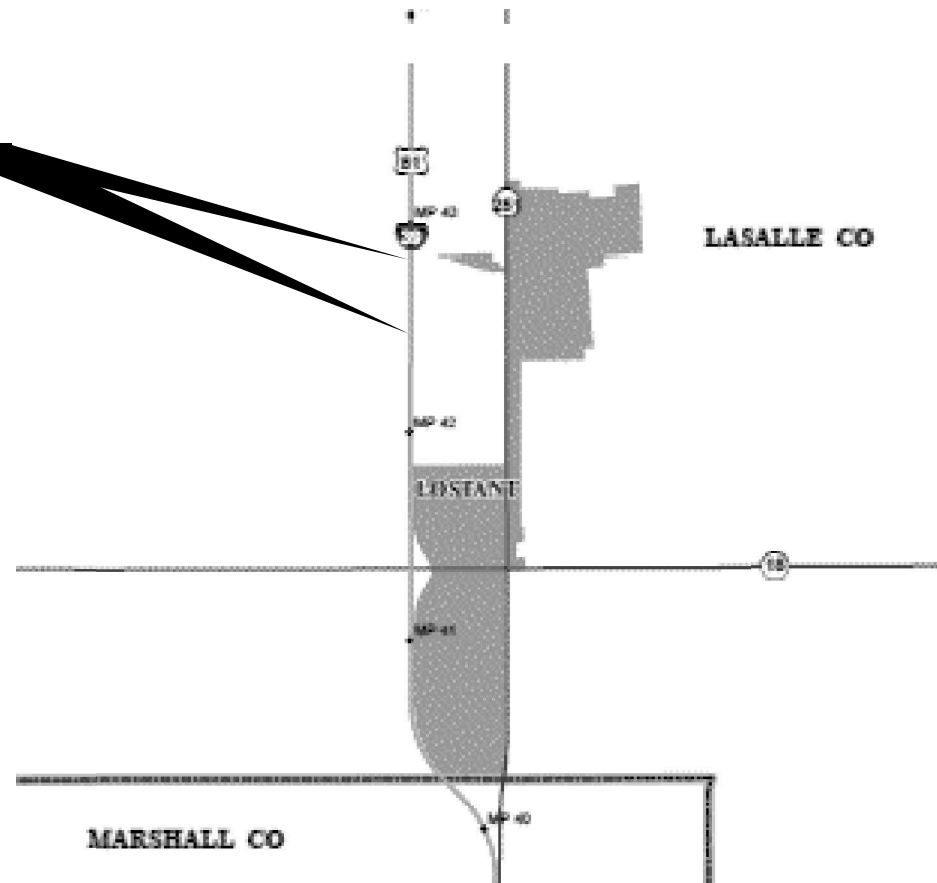
PROJECT ENGINEER: JOE KANNEL P.E.
UNIT CHIEF: RON WOODSHANK
DISTRICT 3 NO. (815) 434-6131
CONTRACT NO. 66L71

STATE OF ILLINOIS
DEPARTMENT OF TRANSPORTATION

PROPOSED
HIGHWAY PLANS

F.A.I. ROUTE 39 (I-39)
SECTION (50-1)PP
CLASS A PAVEMENT PATCHING
LASALLE COUNTY

C-93-067-21

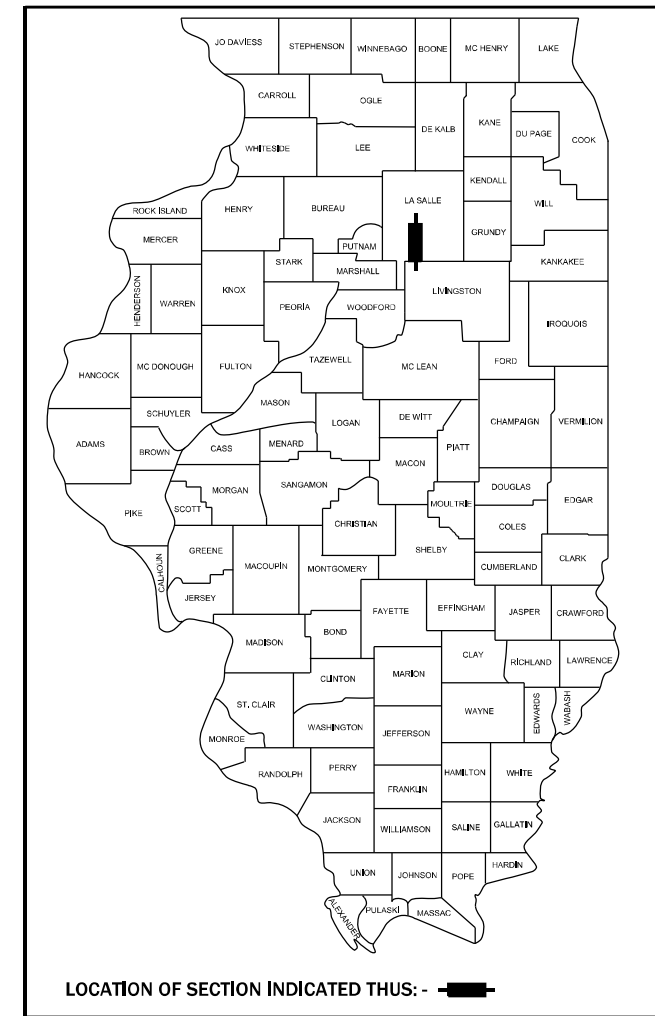


GROSS LENGTH = 5280 FT. = 1.0 MILE
 NET LENGTH = 1500 FT. = 0.28 MILE

F.A.I. RTE.	SECTION	COUNTY	TOTAL SHEETS	SHEET NO.
39	(50-1)PP	LASALLE	11*	1
		ILLINOIS	CONTRACT NO. 66L71	

* THERE ARE 12 TOTAL SHEETS

D-93-033-21



FUNCTIONAL CLASSIFICATION
RURAL
INTERSTATE
F.A.I. ROUTE 39 (I-39)
2019 ADT = 18400
P.V. 67.0% S.U. 5.0% M.U. 28.0%

STATE OF ILLINOIS
 DEPARTMENT OF TRANSPORTATION

SUBMITTED 3/23 20 21
 Masood Ahmad [Signature] REGIONAL ENGINEER

May 7, 2021 [Signature] ENGINEER OF DESIGN AND ENVIRONMENT

May 7, 2021 [Signature] DIRECTOR OF HIGHWAYS PROJECT IMPLEMENTATION

PRINTED BY THE AUTHORITY
OF THE STATE OF ILLINOIS

GENERAL NOTES

PLAN DIMENSIONS AND DETAILS RELATIVE TO EXISTING PLANS ARE SUBJECT TO NOMINAL CONSTRUCTION VARIATIONS. THE CONTRACTOR SHALL FIELD VERIFY EXISTING DIMENSIONS AND DETAILS AFFECTING NEW CONSTRUCTION AND MAKE NECESSARY APPROVED ADJUSTMENTS PRIOR TO CONSTRUCTION OR ORDERING OF MATERIALS. SUCH VARIATIONS SHALL NOT BE CAUSE FOR ADDITIONAL COMPENSATION FOR A CHANGE IN SCOPE OF WORK; HOWEVER, THE CONTRACTOR WILL BE PAID FOR THE QUANTITY ACTUALLY FURNISHED AT THE UNIT PRICE BID FOR THE WORK.

ALL EXCAVATED MATERIAL, WHICH INCLUDES DIGGING OR GRADING OF ANY SOIL OR FILL MATERIAL, WITH THE EXCEPTION OF AGGREGATE FILLS, MUST BE INCORPORATED WITHIN THE IDOT RIGHT OF WAY DUE TO ENVIRONMENTAL DOCUMENTATION REQUIREMENTS.

ANY REFERENCE TO A STANDARD IN THESE PLANS SHALL BE INTERPRETED TO MEAN THE EDITION AS INDICATED BY THE SUBNUMBER SHOWN IN THE LIST OF STANDARDS OR THE COPY INCLUDED IN THESE PLANS.

THE CONTRACTOR SHALL CONTACT JULIE AT LEAST 48 HOURS PRIOR TO EXCAVATION TO DETERMINE WHICH UTILITIES ARE IN THE AREA.

COMMITMENTS

STATE OF ILLINOIS
DEPARTMENT OF TRANSPORTATION
DISTRICT THREE
AS BUILT INFORMATION

SUPERVISING CONSTRUCTION FIELD ENGINEER

RESIDENT ENGINEER / TECHNICIAN

START & END DATES
OF CONSTRUCTION:

INSPECTORS:

STATE OF ILLINOIS
DEPARTMENT OF TRANSPORTATION
DISTRICT THREE

PREPARED BY: _____
DISTRICT STUDIES & PLANS ENGINEER

DATE: _____

EXAMINED BY: _____
DISTRICT CONSTRUCTION ENGINEER

DISTRICT MATERIALS ENGINEER

DISTRICT OPERATIONS ENGINEER

MODEL: Default
FILE NAME: p:\pub\mroom.dwt\illinois.gov\PIWDOT\Documents\IDOT_Offices\District 3\Projects\ID366L71\CADD\DATA\ID366L71_PLANS.dgn

USER NAME = woodshank1	DESIGNED -	REVISED -
	DRAWN -	REVISED -
PLOT SCALE = 100,0000' / in.	CHECKED -	REVISED -
PLOT DATE = 3/1/2021	DATE -	REVISED -

**STATE OF ILLINOIS
DEPARTMENT OF TRANSPORTATION**

GENERAL NOTES

SCALE: SHEET 1 OF 1 SHEETS STA. TO STA.

F.A.I. RTE.	SECTION	COUNTY	TOTAL SHEETS	SHEET NO.
39	(50-1)PP	LASALLE	11	2
CONTRACT NO. 66L71				
ILLINOIS FED. AID PROJECT				

CODE NO.	ITEM	UNIT	TOTAL QUANTITY	CONSTRUCTION CODE	
				CONTRACT MAINTENANCE	
				100% STATE	
				ROADWAY	
				0006	
				RURAL	
* 20201200	REMOVAL AND DISPOSAL OF UNSUITABLE MATERIAL	CU YD	472		472
21001000	GEOTECHNICAL FABRIC FOR GROUND STABILIZATION	SQ YD	1066		1066
31200500	STABILIZED SUBBASE - HOT-MIX ASPHALT, 4"	SQ YD	1066		1066
44200559	CLASS A PATCHES, TYPE IV, 10 INCH	SQ YD	1066		1066
44213000	PATCHING REINFORCEMENT	SQ YD	1066		1066
44213200	SAW CUTS	FOOT	1648		1648
44213204	TIE BARS 3/4"	EACH	354		354
67100100	MOBILIZATION	L SUM	1		1
70100800	TRAFFIC CONTROL AND PROTECTION, STANDARD 701401	L SUM	1		1
70103815	TRAFFIC CONTROL SURVEILLANCE	CAL DA	21		21
70107025	CHANGEABLE MESSAGE SIGN	CAL DA	28		28
* 78008210	POLYUREA PAVEMENT MARKING TYPE I - LINE 4"	FOOT	800		800
* 78008230	POLYUREA PAVEMENT MARKING TYPE I - LINE 6"	FOOT	200		200
X2700001	TEMPORARY RUMBLE STRIPS (SPECIAL)	EACH	8		8

*= SPECIALTY ITEM

MODEL: Default
 FILE NAME: p:\pub\mroom.dwg
 PROJECT: ILLINOIS DOT OFFICE DISTRICT 3 PROJECTS\66L71\CONTRACT\66L71\PLANS.dwg

USER NAME = woodshank1	DESIGNED -	REVISED -	STATE OF ILLINOIS DEPARTMENT OF TRANSPORTATION	SUMMARY OF QUANTITIES			F.A.I. RTE.	SECTION	COUNTY	TOTAL SHEETS	SHEET NO.
PLOT SCALE = 100,0000' / in.	DRAWN -	REVISED -					39	(50-1)PP	LASALLE	11	3
PLOT DATE = 3/1/2021	CHECKED -	REVISED -		SCALE: SHEET 1 OF 2 SHEETS STA. TO STA.			ILLINOIS FED. AID PROJECT				
	DATE -	REVISED -		CONTRACT NO. 66L71							

CODE NO.	ITEM	UNIT	TOTAL QUANTITY	CONSTRUCTION CODE
				CONTRACT MAINTENANCE 100% STATE ROADWAY 0006 RURAL
* Z0054408	ROCK FILL - SUBGRADE	CU YD	472	472

*= SPECIALTY ITEM

MODEL: Default
 FILE NAME: p:\pub\mroom.dwt\illinois.gov\PWIDOT\Documents\DOT_Offices\District 3\Projects\0366L71\CADD\0366L71_PLANS.dgn

USER NAME = woodshank1	DESIGNED -	REVISED -	STATE OF ILLINOIS DEPARTMENT OF TRANSPORTATION	SUMMARY OF QUANTITIES				F.A.I. RTE.	SECTION	COUNTY	TOTAL SHEETS	SHEET NO.
PLOT SCALE = 100,0000 ' / in.	DRAWN -	REVISED -						39	(50-1)PP	LASALLE	11	4
PLOT DATE = 3/1/2021	CHECKED -	REVISED -		SCALE: SHEET 2 OF 2 SHEETS STA. TO STA.				CONTRACT NO. 66L71				
	DATE -	REVISED -		ILLINOIS FED. AID PROJECT								

PATCHING SCHEDULE - NORTHBOUND LANES

LOCATION	PASSING LANE					DRIVING LANE				
	PATCH LENGTH	CLASS A PATCHING TYPE IV	PATCHING REINFORCEMENT	SAW CUTS	TIE BARS	PATCH LENGTH	CLASS A PATCHING TYPE IV	PATCHING REINFORCEMENT	SAW CUTS	TIE BARS
MILE MARKER	FEET	SQ YD	SQ YD	FOOT	EACH	FEET	SQ YD	SQ YD	FOOT	EACH
42.6	400	533	533	824	177					
42.9						400	533	533	824	177
PAGE 1 SUBTOTAL	400	533	533	824	177	400	533	533	824	177
PAGE 1 TOTAL	800	1066	1066	1648	354					

**SUBBASE / SUBGRADE SCHEDULE
NORTHBOUND LANES**

LOCATION	PASSING LANE					DRIVING LANE				
	PATCH LENGTH	REMOVAL AND DISPOSAL OF UNSUITABLE MATERIAL	GEOTECHNICAL FABRIC FOR GROUND STABILIZATION	ROCK FILL - SUBGRADE	STABILIZED SUBBASE HOT - MIX ASPHALT 4"	PATCH LENGTH	REMOVAL AND DISPOSAL OF UNSUITABLE MATERIAL	GEOTECHNICAL FABRIC FOR GROUND STABILIZATION	ROCK FILL - SUBGRADE	STABILIZED SUBBASE HOT - MIX ASPHALT 4"
MILE MARKER	FEET	CU YD	SQ YD	CU YD	SQ YD	FEET	CU YD	SQ YD	CU YD	SQ YD
42.6	400	236	533	236	533					
42.9						400	236	533	236	533
PAGE 1 SUBTOTAL	400	236	533	236	533	400	236	533	236	533
PAGE 1 TOTAL	800	472	1066	472	1066					

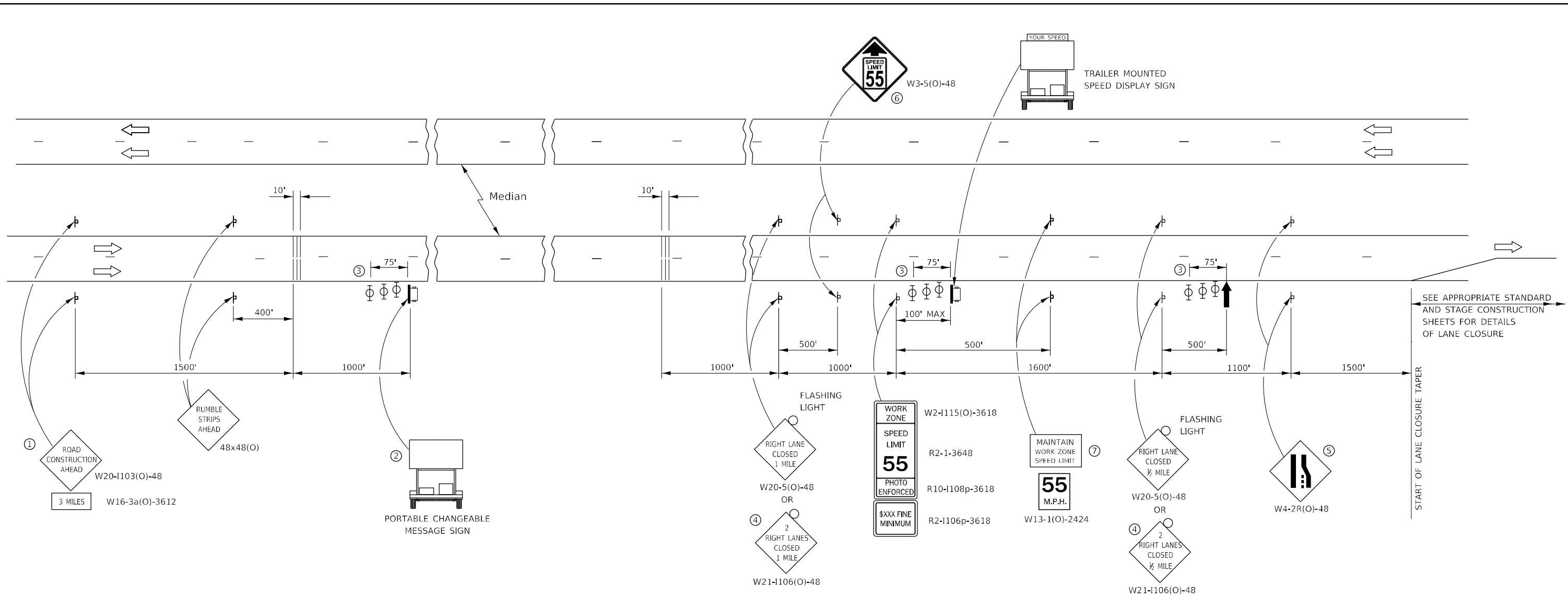
MODEL: Default
 FILE NAME: p:\pub\harronm.dwt\illinois.gov\PWIDOT\Documents\DOT_Offices\District 3\Projects\0366L71\0300\0366L71_P-0418.dgn

USER NAME = woodshank1	DESIGNED -	REVISED -
	DRAWN -	REVISED -
PLOT SCALE = 100,0000' / in.	CHECKED -	REVISED -
PLOT DATE = 3/1/2021	DATE -	REVISED -

**STATE OF ILLINOIS
DEPARTMENT OF TRANSPORTATION**

SCHEDULES			
SCALE:	SHEET 1	OF 1 SHEETS	STA. TO STA.

F.A.I. RTE.	SECTION	COUNTY	TOTAL SHEETS	SHEET NO.
39	(50-1)PP	LASALLE	11	6
			CONTRACT NO. 66L71	
ILLINOIS FED. AID PROJECT				

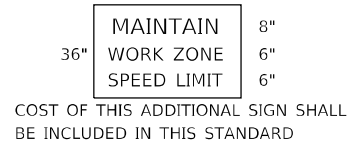


SYMBOLS

- ARROW BOARD
- PORTABLE CHANGEABLE MESSAGE SIGN
- SIGN
- TYPE II BARRICADE, DRUM, OR VERTICAL BARRICADE WITH MONODIRECTIONAL FLASHING LIGHT
- TEMPORARY RUMBLE STRIPS (SEE SPECIAL PROVISION)

- ① THE ROAD CONSTRUCTION AHEAD SIGN SHALL BE LOCATED 3 MILES IN ADVANCE OF THE PROJECT LIMITS.
- ② TO BE PLACED IN THE MEDIAN WHEN FEASIBLE. THE MESSAGE BOARD SHALL BE USED TO DISPLAY STATUS OF LANES WITHIN THE PROJECT. THE PRIMARY MESSAGES SHALL BE:
"RIGHT LANE CLOSED" / " x MILES AHEAD"
"LEFT LANE CLOSED" / " x MILES AHEAD"
"ALL LANES OPEN"
- ③ THREE, TYPE II BARRICADES, DRUMS, OR VERTICAL BARRICADES AT 25' CENTERS.
- ④ THIS SIGN SHALL BE USED WHEN 2 LANES ARE CLOSED.
- ⑤ WHEN THE LEFT LANE IS CLOSED, SWITCH THESE TWO SIGNS AND THE DIRECTION OF THE MERGE ARROW.
- ⑥ THIS SIGN SHALL ONLY BE USED IF THE EXISTING SPEED LIMIT IS GREATER THAN 65 MPH.

- ⑦ 48"x36" FLUORESCENT ORANGE SIGN WITH BLACK LETTERS, 48"



COST OF THIS ADDITIONAL SIGN SHALL BE INCLUDED IN THIS STANDARD

GENERAL NOTE:

THIS STANDARD IS USED WHERE AT ANY TIME A LANE IS CLOSED ON A FREEWAY/EXPRESSWAY. WHEN THE LEFT LANE IS CLOSED, LEFT LANE CLOSED SIGNS SHALL BE SUBSTITUTED FOR THE RIGHT LANE CLOSED SIGNS.

THE FIRST TWO SIGNS, BOTH SETS OF RUMBLE STRIPS AND MESSAGE BOARD ARE STATIONARY.

THE LAST FIVE SIGNS AND ARROW BOARD SHALL BE MOVED AS NECESSARY TO MAINTAIN THE REQUIRED DISTANCE FROM THE START OF THE LANE CLOSURE TAPER(S).

MODEL: Default
FILE NAME: \\pilot\mtr\room\dot\illinois.gov\PIWDOT\Documents\DOT_Offices\District_3\Projects\036671\036671-PLANS.dwg

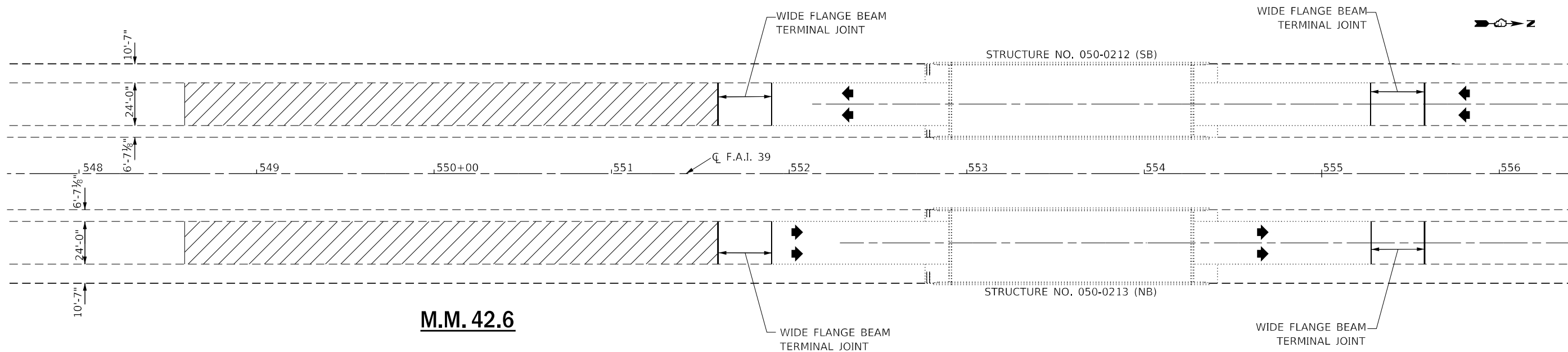
USER NAME = woodshank1	DESIGNED -	REVISED -
	DRAWN -	REVISED -
PLOT SCALE = 100,0000' / in.	CHECKED -	REVISED -
PLOT DATE = 3/1/2021	DATE -	REVISED -

**STATE OF ILLINOIS
DEPARTMENT OF TRANSPORTATION**

TRAFFIC CONTROL AND PROTECTION, STANDARD 701400

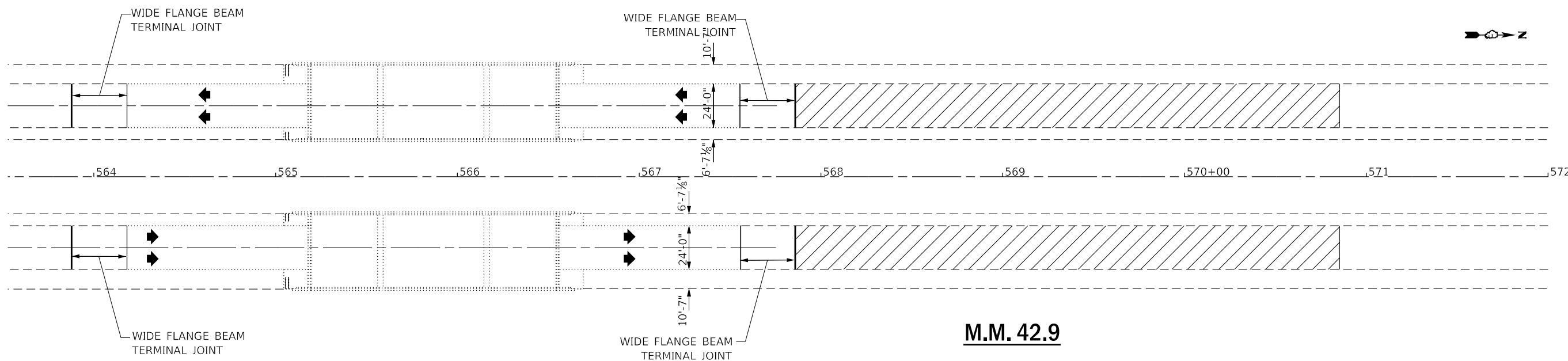
SCALE: SHEET 1 OF 1 SHEETS STA. TO STA.

F.A.I. RTE.	SECTION	COUNTY	TOTAL SHEETS	SHEET NO.
39	(50-1)PP	LASALLE	11	7
CONTRACT NO. 66L71				
ILLINOIS FED. AID PROJECT				



M.M. 42.6

NOTE:
LOCATION OF PATCH ARE ESTIMATED, THE ENGINEER SHALL DETERMINE THE ACTUAL LOCATION AND LENGTHS AT TIME OF CONSTRUCTION



M.M. 42.9

MODEL: Default
 FILE NAME: p:\pub\mbarrom.dwg
 PROJECT: I:\DOT\Documents\DOT - Office\District 3\Projects\036671\CADD\036671_P\448.dwg

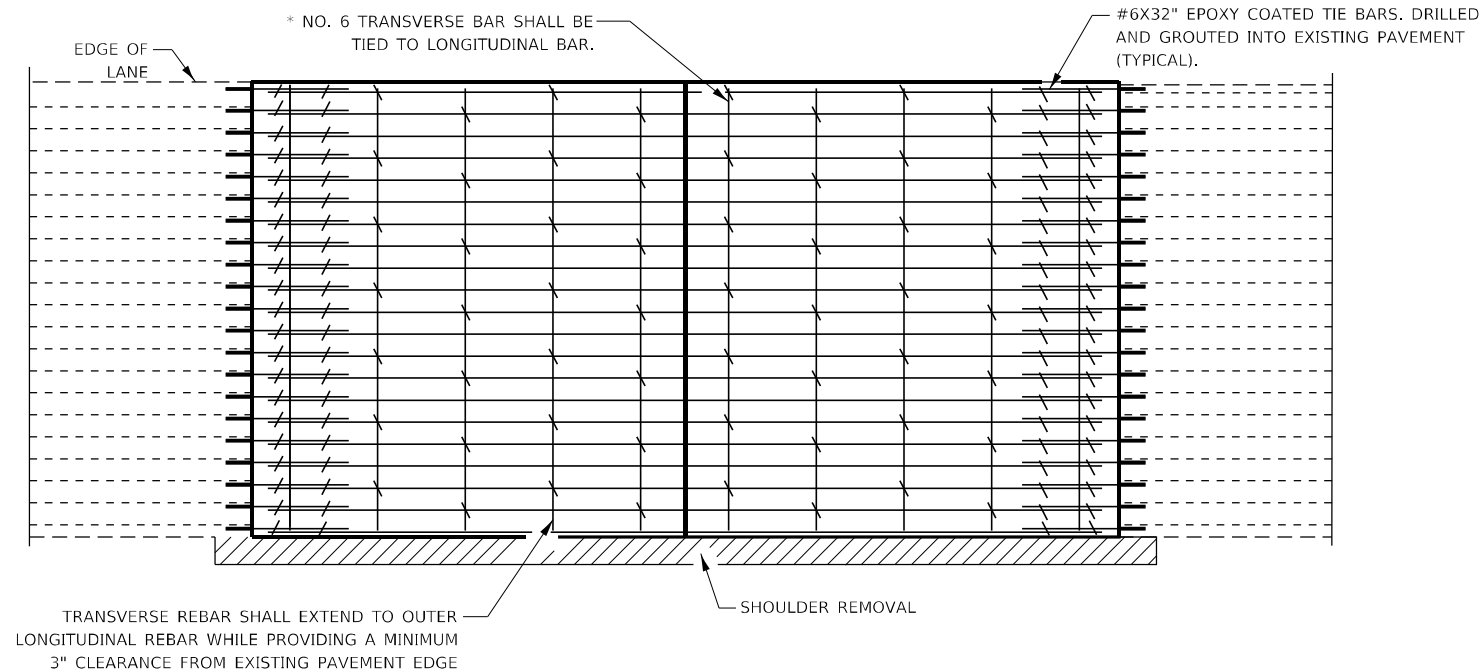
USER NAME = woodshank1	DESIGNED -	REVISED -
	DRAWN -	REVISED -
PLOT SCALE = 100,0000' / in.	CHECKED -	REVISED -
PLOT DATE = 3/1/2021	DATE -	REVISED -

**STATE OF ILLINOIS
DEPARTMENT OF TRANSPORTATION**

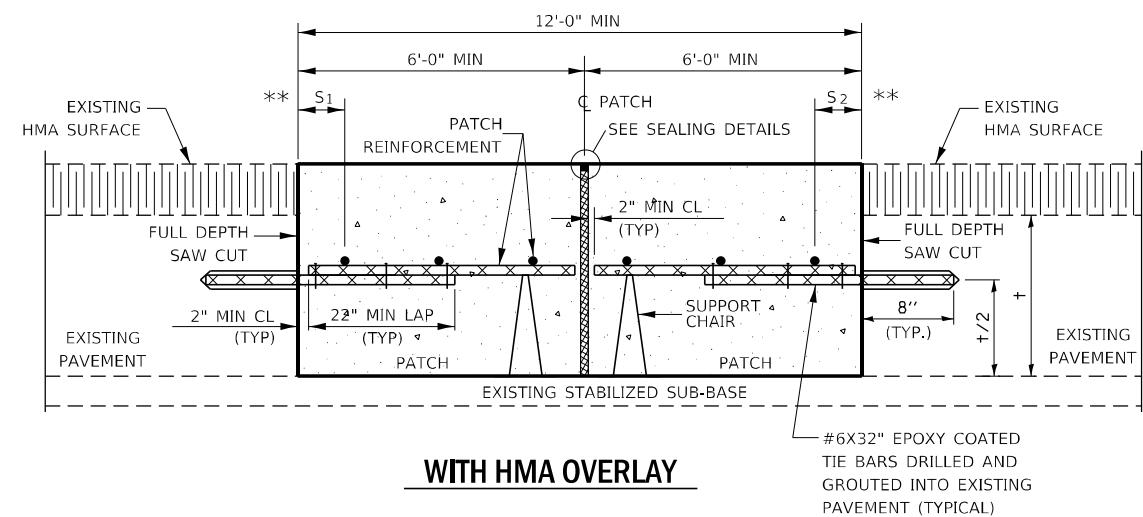
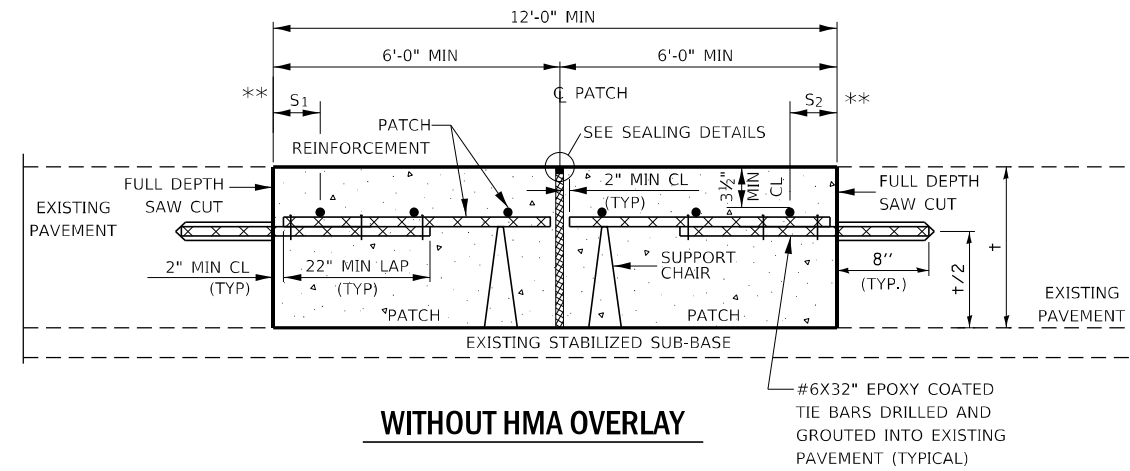
PLAN DETAILS

SCALE: SHEET 1 OF 1 SHEETS STA. TO STA.

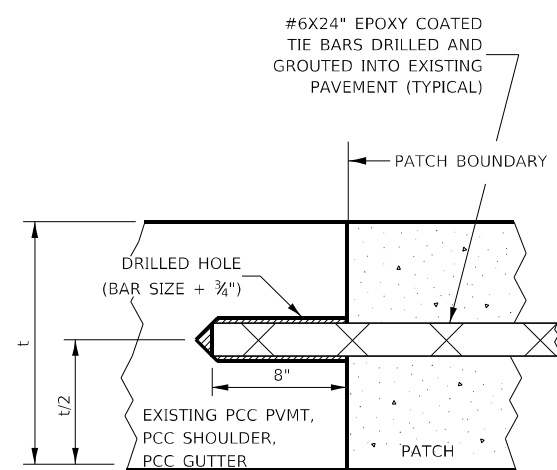
F.A.I. RTE.	SECTION	COUNTY	TOTAL SHEETS	SHEET NO.
39	(50-1)PP	LASALLE	11	8
ILLINOIS FED. AID PROJECT			CONTRACT NO. 66L71	



PAVEMENT REINFORCEMENT DETAIL

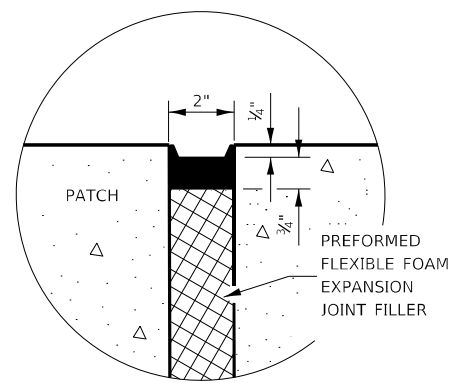


CLASS A PATCH WITH EXPANSION JOINT

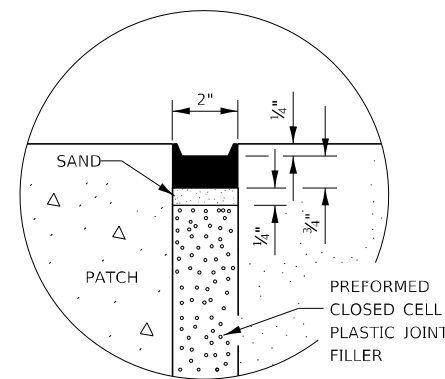


LONGITUDINAL CONSTRUCTION JOINT

PATCHES MORE THAN 20' IN LENGTH SHALL BE TIED TO ADJACENT PAVEMENT, PCC SHOULDERS OR PCC CURB AND GUTTER WITH #6x24" EPOXY COATED TIE BARS AT 36" CENTERS.



SEALING DETAIL



SEALING DETAIL

NOTES:

EXISTING LONGITUDINAL REINFORCEMENT SPACING; 4".

SPACING OF NEW LONGITUDINAL REINFORCEMENT AND NEW LONGITUDINAL TIE BARS SHALL MATCH SPACING OF EXISTING REINFORCEMENT AND SHALL BE TIED TOGETHER WITH A MINIMUM OF TWO TIES PER BAR.

SUPPORT CHAIRS SHALL BE REQUIRED WHENEVER PATCH LENGTH EXCEEDS 6'-0"

* EVERY THIRD INTERSECTION MUST BE TIED. WHEN THE MINIMUM CLEARANCE CANNOT BE OBTAINED WITH THE TRANSVERSE REBAR ON TOP, THEN THE TRANSVERSE REBAR SHALL BE TIED TO THE BOTTOM OF THE LONGITUDINAL REBAR.

** VARIABLES WHERE S₁ AND S₂ ARE 2½" MIN. AND 12" MAX.

MODEL: Default
FILE NAME: p:\pub\harronm.dwt\illinois.gov\PIWDOT\Documents\DOT Office\Drawings\Projects\036671\036671\036671-PL418.dwg

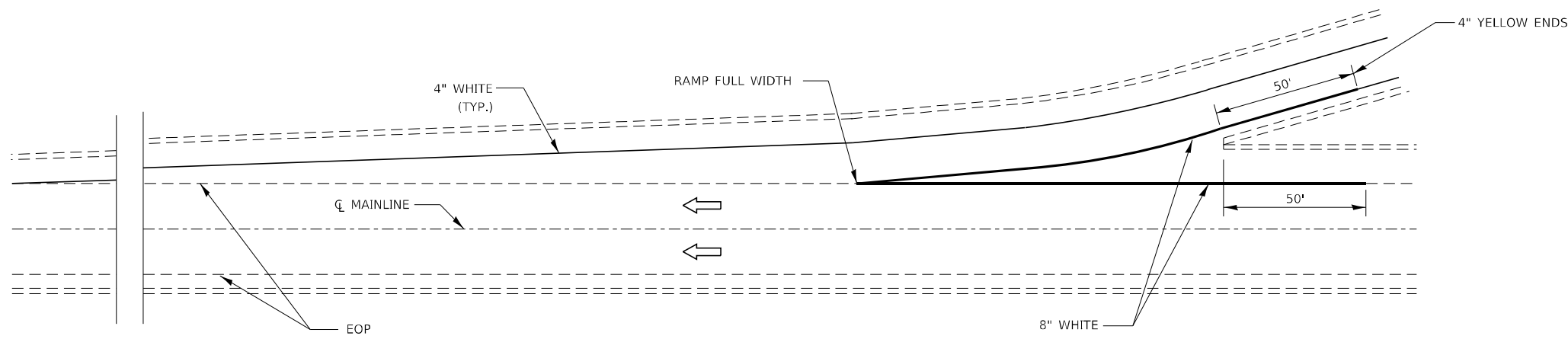
USER NAME = woodshank1	DESIGNED -	REVISED -
	DRAWN -	REVISED -
PLOT SCALE = 100,0000' / in.	CHECKED -	REVISED -
PLOT DATE = 3/1/2021	DATE -	REVISED -

**STATE OF ILLINOIS
DEPARTMENT OF TRANSPORTATION**

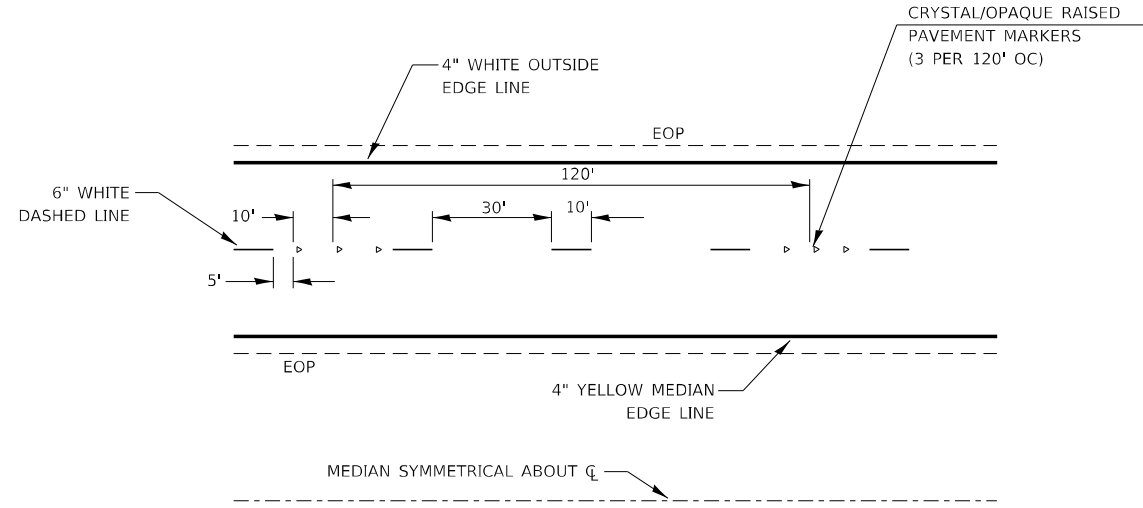
CLASS A PATCHING DETAILS

SCALE: SHEET 1 OF 1 SHEETS STA. TO STA.

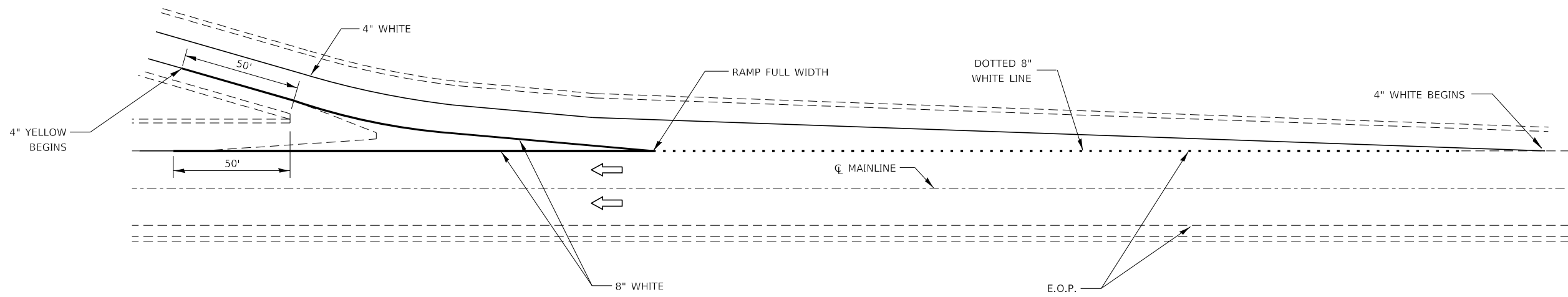
F.A.I. RTE.	SECTION	COUNTY	TOTAL SHEETS	SHEET NO.
39	(50-1)PP	LASALLE	11	10
CONTRACT NO. 66L71				
ILLINOIS FED. AID PROJECT				



TYPICAL PAVEMENT MARKING FOR ENTRANCE RAMP TERMINALS



TYPICAL PAVEMENT MARKINGS



TYPICAL PAVEMENT MARKINGS FOR EXIT RAMP TERMINALS

MODEL: Default
 FILE NAME: p:\pub\mbarrom.dwg
 PROJECT: 0366L71\CD000001\0366L71-PLAN.dwg
 PROJECT: 0366L71\CD000001\0366L71-PLAN.dwg

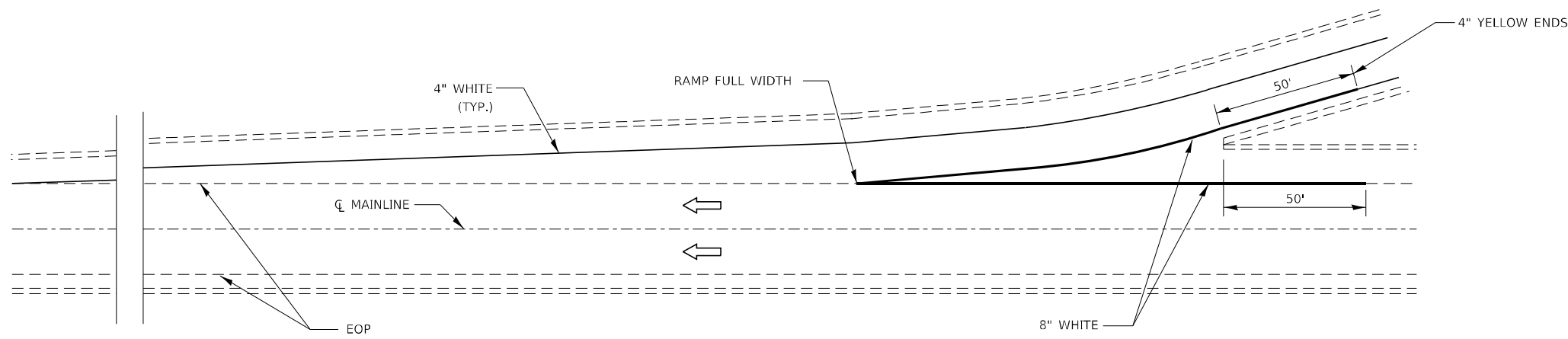
USER NAME = woodshank1	DESIGNED -	REVISED -
	DRAWN -	REVISED -
PLOT SCALE = 100,0000' / in.	CHECKED -	REVISED -
PLOT DATE = 3/1/2021	DATE -	REVISED -

**STATE OF ILLINOIS
DEPARTMENT OF TRANSPORTATION**

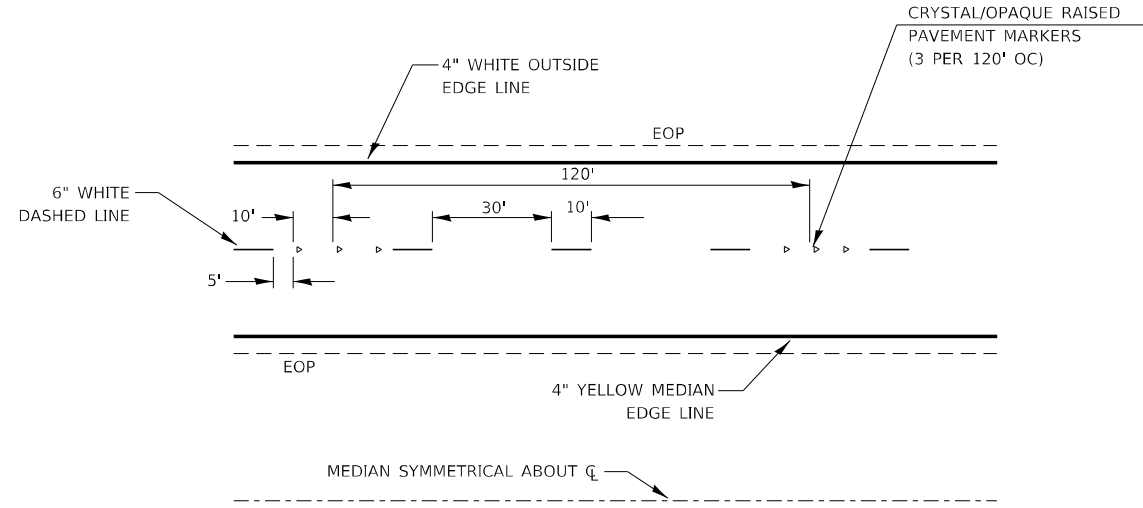
CLASS A PATCHING DETAILS

SCALE: SHEET 1 OF 1 PAVEMENT MARKING TO STA.

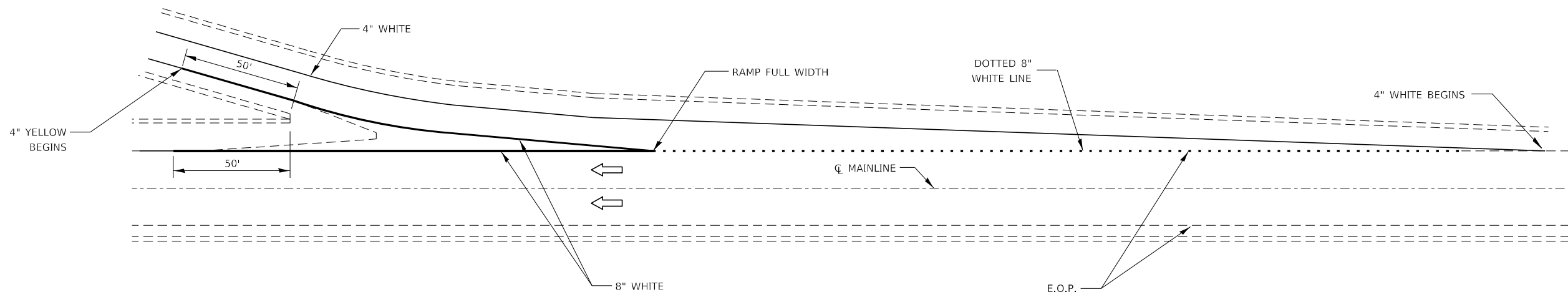
F.A.I. RTE.	SECTION	COUNTY	TOTAL SHEETS	SHEET NO.
39	(50-1)PP	LASALLE	11	11
CONTRACT NO. 66L71				
ILLINOIS FED. AID PROJECT				



TYPICAL PAVEMENT MARKING FOR ENTRANCE RAMP TERMINALS



TYPICAL PAVEMENT MARKINGS



TYPICAL PAVEMENT MARKINGS FOR EXIT RAMP TERMINALS

MODEL: Default
 FILE NAME: p:\pub\lanscom.dwt\illinois\dot\Documents\IDOT_Office\IDOTrefc_3\Projects\ID366L71\CADD\DATA\ID366L71_PLANS.dgn

USER NAME = woodshank1	DESIGNED -	REVISED -
	DRAWN -	REVISED -
PLOT SCALE = 100,0000' / in.	CHECKED -	REVISED -
PLOT DATE = 3/1/2021	DATE -	REVISED -

**STATE OF ILLINOIS
DEPARTMENT OF TRANSPORTATION**

CLASS A PATCHING DETAILS

SCALE: SHEET 1 OF 1 PAVEMENT MARKING TO STA.

F.A.I. RTE.	SECTION	COUNTY	TOTAL SHEETS	SHEET NO.
39	(50-1)PP	LASALLE	12	12
CONTRACT NO. 66L71				
ILLINOIS FED. AID PROJECT				