

STATE OF ILLINOIS
DEPARTMENT OF TRANSPORTATION

F.A.P. RTE.	SECTION	COUNTY	TOTAL SHEETS	SHEET NO.
327A	(16,17,18)RS-4	MARION	13	1
		ILLINOIS	CONTRACT NO. 76N14	

D-98-040-20



INDEX OF SHEETS

- 1 COVER SHEET
- 2 HIGHWAY STANDARDS, GENERAL NOTES, MIXTURE REQUIREMENTS & COMMITMENTS
- 3-4 SUMMARY OF QUANTITIES
- 5-8 TYPICAL SECTIONS
- 9-10 SCHEDULE OF QUANTITIES
- 11 ALIGNMENTS, TIES, AND BENCHMARKS
- 12 ADA DETAIL
- 13 LOCATION MAP

PROPOSED
HIGHWAY PLANS

FAP ROUTE 327A (US 050)
SECTION (16,17,18)RS-4
PROJECT NHPP-BUCB(737)
MICROSURFACING - 1 PASS & ADA
MARION COUNTY

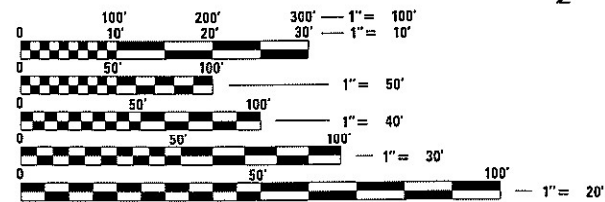
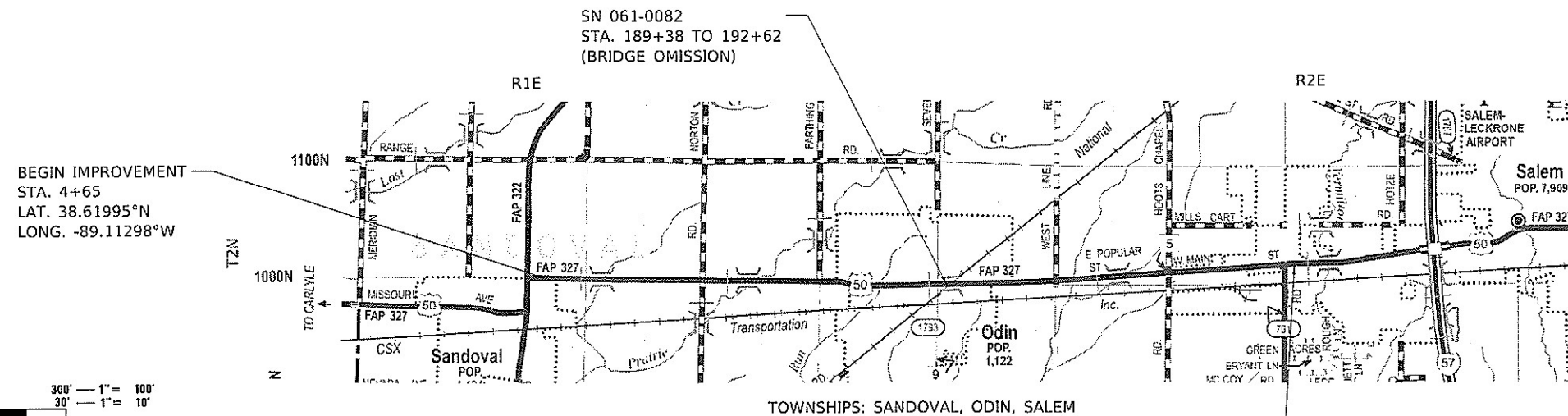
C-98-054-20

TRAFFIC DATA

FUNCTIONAL CLASSIFICATION: OTHER ARTERIAL

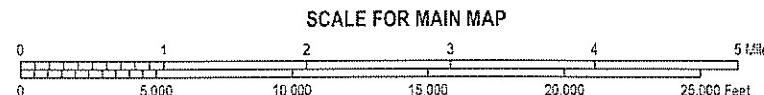
US 50 FROM 0.1 MI. E. OF US 51 TO 0.1 MI. E. OF SELMAVILLE RD.:

2019 ADT (ACTUAL): 6,200
2020 ADT (ESTIMATED): 6,250
SU: 2.5%
MU: 9.3%



FULL SIZE PLANS HAVE BEEN PREPARED USING STANDARD ENGINEERING SCALES. REDUCED SIZED PLANS WILL NOT CONFORM TO STANDARD SCALES. IN MAKING MEASUREMENTS ON REDUCED PLANS, THE ABOVE SCALES MAY BE USED.

J.U.L.I.E.
JOINT UTILITY LOCATION INFORMATION FOR EXCAVATORS
1-800-892-0123
OR 811



PROJECT ENGINEER: BILLIE OWEN (618)346-3209
PROJECT MANAGER: PHIL FREIMUTH (618)346-3194

GROSS LENGTH = 34,235 FT. = 6.484 MILE
NET LENGTH = 33,911 FT. = 6.423 MILE

CONTRACT NO. 76N14

STATE OF ILLINOIS
DEPARTMENT OF TRANSPORTATION

SUBMITTED March 4 2021
Keith Roberts
REGIONAL ENGINEER

May 7, 2021 [Signature]
ENGINEER OF DESIGN AND ENVIRONMENT

May 7, 2021 [Signature]
DIRECTOR OF HIGHWAYS PROJECT IMPLEMENTATION

PRINTED BY THE AUTHORITY
OF THE STATE OF ILLINOIS

HIGHWAY STANDARDS

000001-08	STANDARD SYMBOLS, ABBREVIATIONS AND PATTERNS
001006	DECIMAL OF AN INCH AND OF A FOOT
424001-11	PERPENDICULAR CURB RAMPS FOR SIDEWALKS
701001-02	OFF-RD OPERATIONS, 2L, 2W, MORE THAN 15' (4.5m) AWAY
701006-05	OFF-RD OPERATIONS, 2L, 2W, 15' (4.5m) TO 24" (600mm) FROM PAVEMENT EDGE
701201-05	LANE CLOSURE, 2L, 2W, DAY ONLY, FOR SPEEDS ≥45 MPH
701301-04	LANE CLOSURE, 2L, 2W, SHORT TIME OPERATIONS
701306-04	LANE CLOSURE, 2L, 2W, SLOW MOVING OPERATIONS DAY ONLY, FOR SPEEDS ≥45 MPH
701311-03	LANE CLOSURE, 2L, 2W, MOVING OPERATIONS - DAY ONLY
701336-07	LANE CLOSURE, 2L, 2W, WORK AREAS IN SERIES, FOR SPEEDS ≥45 MPH
701501-06	URBAN LANE CLOSURE, 2L, 2W, UNDIVIDED
701502-09	URBAN LANE CLOSURE, 2L, 2W, WITH BIDIRECTIONAL LEFT TURN LANE
701602-10	URBAN LANE CLOSURE, MULTILANE, 2W WITH BIDIRECTIONAL LEFT TURN LANE
701701-10	URBAN LANE CLOSURE, MULTILANE INTERSECTION
701801-06	SIDEWALK, CORNER OR CROSSWALK CLOSURE
701901-08	TRAFFIC CONTROL DEVICES
780001-05	TYPICAL PAVEMENT MARKINGS
781001-04	TYPICAL APPLICATIONS RAISED REFLECTIVE PAVEMENT MARKERS

MIXTURE REQUIREMENTS

MIXTURE USE	PATCHING
AC/PG	PG 64-22
RAP % (MAX)	SEE SPECIAL PROVISION
DESIGN AIR VOIDS	4.0% @ Ndes=70
MIX COMPOSITION (Gradation)	IL 19.0
FRICTION AGG	MIXTURE "B"
QUALITY MGMT PROGRAM	QC/QA

PLAN QUANTITIES FOR HMA ITEMS ARE CALCULATED USING A UNIT WEIGHT OF 112 LB/SQ YD/IN.

COMMITMENTS

NONE

GENERAL NOTES:

- ① AGENCIES KNOWN TO HAVE FACILITIES WITHIN THE PROJECT AREA ARE AS FOLLOWS:

	AERIAL	BURIED
AMEREN ILLINOIS (GAS & ELECTRIC)	X	X
AT&T ILLINOIS (COMMUNICATIONS)	X	X
CITY OF CENTRALIA (WATER & SANITARY SEWER)		X
CHARTER COMMUNICATIONS, INC. (CABLE TV)	X	X
COUNTRYMARK COOPERATIVE, LLP (PIPELINE)		X
FAIRPOINT COMMUNICATIONS (COMMUNICATIONS)	X	X
FMC WATER COMPANY (WATER)		X
FRONTIER COMMUNICATIONS (COMMUNICATIONS)	X	X
MARATHON PIPE LINE LLC (PIPELINE)		X
METRO COMMUNICATIONS COMPANY, INC. (COMMUNICATIONS)	X	X
VILLAGE OF ODIN (WATER & SANITARY SEWER)		X
CITY OF SALEM (GAS)		X
CITY OF SALEM (WATER & SANITARY SEWER)		X
VILLAGE OF SANDOVAL (WATER & SANITARY SEWER)		X
TRI-COUNTYELECTRIC COOPERATIVE, INC. (ELECTRIC)		X
WABASH COMMUNICATIONS COOPERATIVE, INC. (COMMUNICATIONS)	X	X
WINDSTREAM KDL, INC. (COMMUNICATIONS)	X	X

- ② NO SURVEY WAS PERFORMED FOR THIS PROJECT AND THE PLANS WERE CREATED USING USING MICROFILM AND FIELD MEASUREMENTS.
- ③ AN ESTIMATED QUANTITY OF 104,550 FEET OF FIBER-MODIFIED ASPHALT CRACK SEALING HAS BEEN ADDED TO THE PLANS. EXACT LOCATIONS WILL BE DETERMINED BY THE ENGINEER.
- ④ NO OVERNIGHT LANE CLOSURES WILL BE PERMITTED.
- ⑤ THE PROPOSED PAVEMENT MARKINGS AND TEMPORARY PAVEMENT MARKINGS SHALL MATCH THE LOCATIONS OF THE EXISTING PAVEMENT MARKINGS, AS DIRECTED BY THE ENGINEER. EXISTING PAVEMENT MARKING PLANS ARE LOCATED WITH THE PLANS AND SPECIAL PROVISIONS IN THE CONTRACT DETAILS ON THE WEBSITE.
- ⑥ THE CONTRACTOR SHALL PROTECT ALL SURVEY MONUMENTS TO ENSURE THEY ARE VISIBLE UPON COMPLETION OF THE MICROSURFACING. THE PROCESS ESTABLISHED BY THE CONTRACTOR SHALL BE APPROVED BY THE RESIDENT ENGINEER PRIOR TO CONSTRUCTION AND THE COST FOR THIS WORK SHALL BE INCLUDED IN THE COST OF THE MICROSURFACING.
- ⑦ ALL SHORT TERM PAVEMENT MARKING AND TEMPORARY PAVEMENT MARKING APPLIED TO THE MICROSURFACING SHALL BE REMOVABLE TAPE.
- ⑧ TWO CHANGEABLE MESSAGE SIGNS SHALL BE PROVIDED ALONG US 50 TO ALERT DRIVERS OF THE ROAD CONSTRUCTION. CHANGEABLE MESSAGE SIGNS SHALL BE PLACED 14 DAYS PRIOR TO BEGINNING ANY WORK. EXACT LOCATIONS OF THE CHANGEABLE MESSAGE SIGNS SHALL BE DETERMINED BY THE ENGINEER.

STATE OF ILLINOIS
DEPARTMENT OF TRANSPORTATION

HIGHWAY STANDARDS, GENERAL NOTES,
MIXTURE REQUIREMENTS & COMMITMENTS

F.A.P. RTE.	SECTION	COUNTY	TOTAL SHEETS	SHEET NO.
327A	(16,17,18)RS-4	MARION	13	2
CONTRACT NO. 76N14				
ILLINOIS FED. AID PROJECT				

SCALE: SHEET 1 OF 1 SHEETS STA. TO STA.

SUMMARY OF QUANTITIES

80% FED
20% STATE

CONSTRUCTION CODE

CODE NO.	ITEM	UNIT	TOTAL QUANTITY	CONSTRUCTION CODE	
				ROADWAY 0005	ROADWAY 0005
				RURAL	URBAN
40400001	FIBER-MODIFIED ASPHALT CRACK SEALING	FOOT	104550	40322	64228
40400020	BUMP REMOVAL	EACH	91	43	48
40400118	MICRO-SURFACING, SINGLE PASS	SQ YD	98920	32663	66257
40600290	BITUMINOUS MATERIALS (TACK COAT)	POUND	22257	7349	14908
42400100	PORTLAND CEMENT CONCRETE SIDEWALK 4 INCH	SQ FT	448	0	448
42400800	DETECTABLE WARNINGS	SQ FT	74	0	74
44000600	SIDEWALK REMOVAL	SQ FT	448	0	448
67000400	ENGINEER'S FIELD OFFICE, TYPE A	CAL MO	4	2	2
67100100	MOBILIZATION	L SUM	1	0.4	0.6
70100450	TRAFFIC CONTROL AND PROTECTION, STANDARD 701201	L SUM	1	0.4	0.6
70100460	TRAFFIC CONTROL AND PROTECTION, STANDARD 701306	L SUM	1	0.4	0.6
70100600	TRAFFIC CONTROL AND PROTECTION, STANDARD 701336	L SUM	1	0.4	0.6
70102620	TRAFFIC CONTROL AND PROTECTION, STANDARD 701501	L SUM	1	0.4	0.6
70102622	TRAFFIC CONTROL AND PROTECTION, STANDARD 701502	L SUM	1	0.4	0.6

SUMMARY OF QUANTITIES

80% FED
20% STATE

CONSTRUCTION CODE

CODE NO.	ITEM	UNIT	TOTAL QUANTITY	CONSTRUCTION CODE	
				ROADWAY 0005	ROADWAY 0005
				RURAL	URBAN
70102632	TRAFFIC CONTROL AND PROTECTION, STANDARD 701602	L SUM	1	0.4	0.6
70102635	TRAFFIC CONTROL AND PROTECTION, STANDARD 701701	L SUM	1	0.4	0.6
70102640	TRAFFIC CONTROL AND PROTECTION, STANDARD 701801	L SUM	1	0.4	0.6
70107025	CHANGEABLE MESSAGE SIGN	CAL DA	28	14	14
70300100	SHORT TERM PAVEMENT MARKING	FOOT	10024	2652	7372
70300150	SHORT TERM PAVEMENT MARKING REMOVAL	SQ FT	3356	885	2471
70300210	TEMPORARY PAVEMENT MARKING LETTERS AND SYMBOLS	SQ FT	504	0	504
70300220	TEMPORARY PAVEMENT MARKING - LINE 4"	FOOT	109098	29158	79940
70300260	TEMPORARY PAVEMENT MARKING - LINE 12"	FOOT	1358	5	1353
70300280	TEMPORARY PAVEMENT MARKING - LINE 24"	FOOT	62	0	62
* 78000100	THERMOPLASTIC PAVEMENT MARKING - LETTERS AND SYMBOLS	SQ FT	504	0	504
* 78000200	THERMOPLASTIC PAVEMENT MARKING - LINE 4"	FOOT	109098	29158	79940
* 78000600	THERMOPLASTIC PAVEMENT MARKING - LINE 12"	FOOT	1358	5	1353
* 78000650	THERMOPLASTIC PAVEMENT MARKING - LINE 24"	FOOT	62	0	62

* SPECIALTY ITEM

STATE OF ILLINOIS
DEPARTMENT OF TRANSPORTATION

SUMMARY OF QUANTITIES

USER NAME = DIXONMA	DESIGNED -	REVISED -
	DRAWN -	REVISED -
PLOT SCALE = 100,0000' / in.	CHECKED -	REVISED -
PLOT DATE = 3/4/2021	DATE -	REVISED -

SCALE: SHEET 1 OF 2 SHEETS STA. TO STA.

F.A.P. RTE.	SECTION	COUNTY	TOTAL SHEETS	SHEET NO.
327A	(16,17,18)RS-4	MARION	13	3
CONTRACT NO. 76N14				
ILLINOIS FED. AID PROJECT				

MODEL: Default
 FILE NAME: p:\data\masonm.edu\illinois.gov\PWIDOT\Documents\DOT Office\District 8\Projects\076N14\CAD\DATA\CAD\Access\076N14-Plt-S00.dgn

MODEL: Default
 FILE NAME: P:\pub\mranon.edu\illinois.gov\PWIDOT\Documents\DOT_Offices\District_8\Projects\076N14\CAD\Drawings\076N14-11-500.dgn

SUMMARY OF QUANTITIES				80% FED 20% STATE	CONSTRUCTION CODE	
CODE NO.	ITEM	UNIT	TOTAL QUANTITY	ROADWAY 0005		
				RURAL	URBAN	
				* 78100100	RAISED REFLECTIVE PAVEMENT MARKER	EACH
78300200	RAISED REFLECTIVE PAVEMENT MARKER REMOVAL	EACH	769	160	609	
78300201	PAVEMENT MARKING REMOVAL - GRINDING	SQ FT	38363	9726	28637	
X4400100	PORTLAND CEMENT CONCRETE SURFACE REMOVAL (VARIABLE DEPTH)	SQ YD	1	0	1	
X4401198	HOT-MIX ASPHALT SURFACE REMOVAL, VARIABLE DEPTH	SQ YD	11	0	11	
X4406225	PARTIAL DEPTH REMOVAL, TYPE II, 2.5"	SQ YD	208	136	72	
X4421000	PARTIAL DEPTH PATCHING	TON	4.7	3	1.7	
X7030005	TEMPORARY PAVEMENT MARKING REMOVAL	SQ FT	38363	9726	28637	
∅ Z0076600	TRAINEES	HOUR	500	500		
∅ Z0076604	TRAINEES TRAINING PROGRAM GRADUATE	HOUR	500	500		

* SPECIALTY ITEM
 ∅ 0042

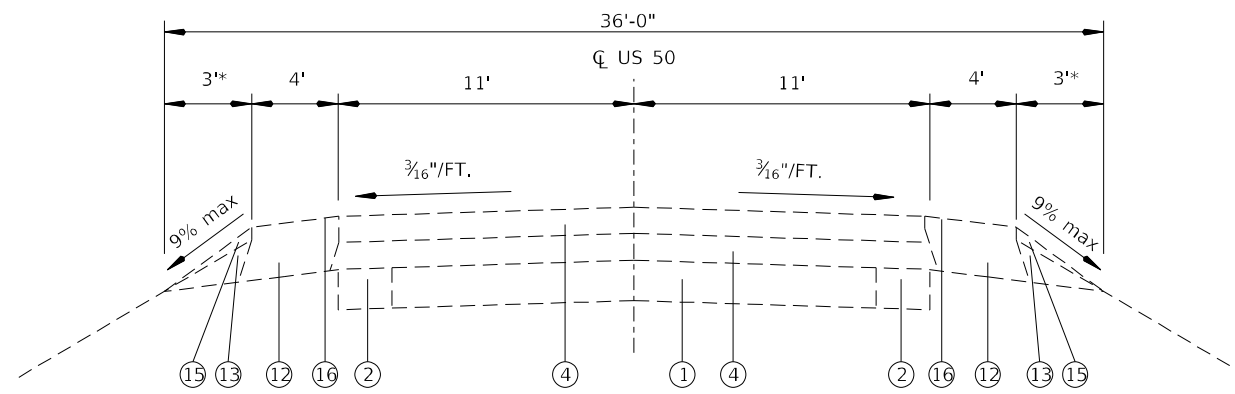
REV. - MS

USER NAME = DIXONMA	DESIGNED -	REVISED -
PLOT SCALE = 100,0000' / in.	DRAWN -	REVISED -
PLOT DATE = 3/4/2021	CHECKED -	REVISED -
	DATE -	REVISED -

STATE OF ILLINOIS
DEPARTMENT OF TRANSPORTATION

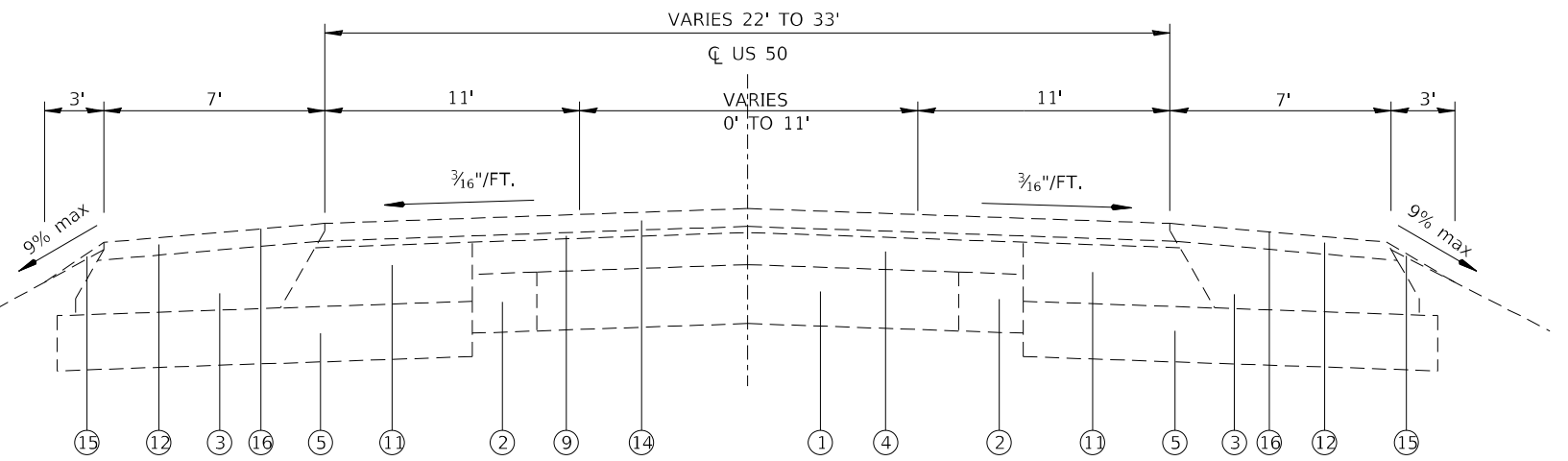
SUMMARY OF QUANTITIES			
SCALE:	SHEET 2	OF 2 SHEETS	STA. TO STA.

F.A.P. RTE.	SECTION	COUNTY	TOTAL SHEETS	SHEET NO.
327A	(16,17,18)RS-4	MARION	13	4
				CONTRACT NO. 76N14
ILLINOIS			FED. AID PROJECT	

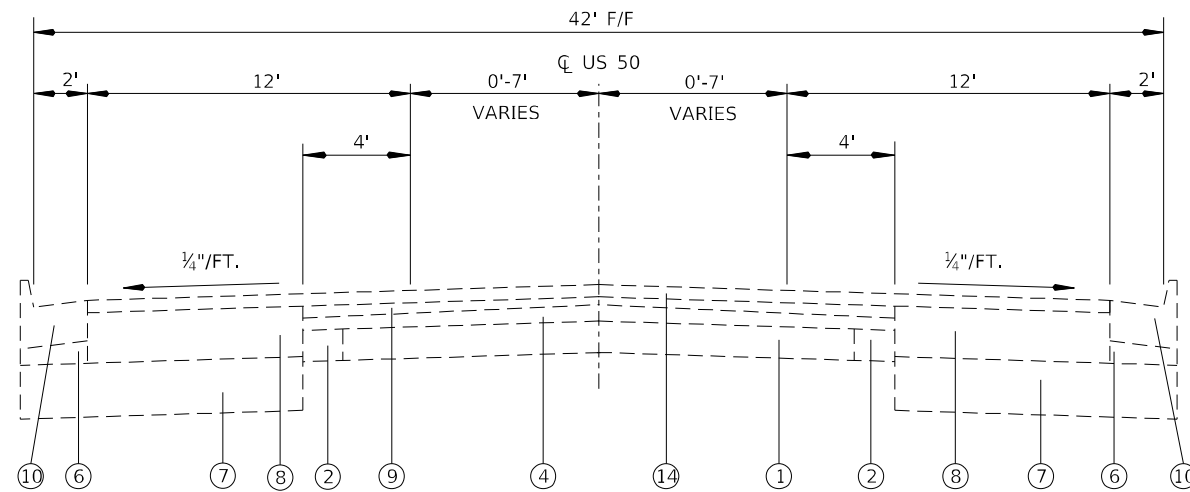


EXISTING TYPICAL SECTION
 STA. 4+65.00 TO STA. 153+73.00
 STA. 192+62.00 TO STA. 245+37.00
 STA. 269+57.00 TO STA. 282+44.00
 STA. 295+25.00 TO STA. 335+53.00
 (STA. 189+38 TO STA. 192+62.00 - BRIDGE OMISSION)

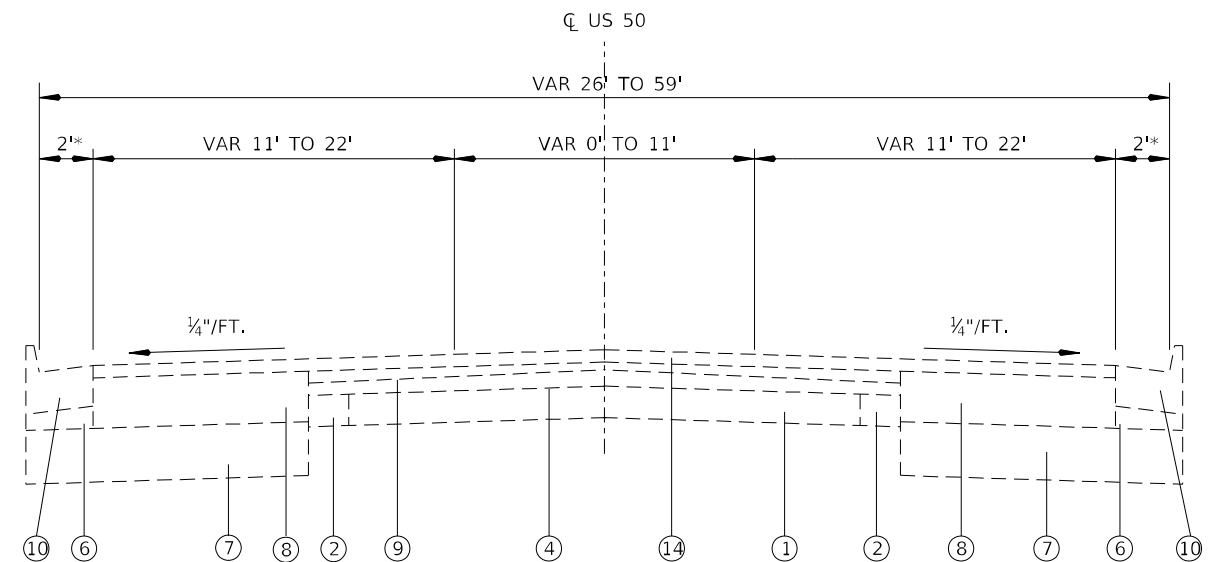
*5' AGGREGATE SHOULDER IN LOCATIONS AS SHOWN ON SCHEDULE



EXISTING TYPICAL SECTION
 STA. 245+37.00 TO STA. 269+57.00



EXISTING TYPICAL SECTION
 STA. 153+73.00 TO STA. 189+38.00
 (STA. 189+38 TO STA. 192+62.00 - BRIDGE OMISSION)



EXISTING TYPICAL SECTION
 STA. 335+53.00 TO STA. 347+00.00
 *4' HMA AND 2' AGGREGATE SHOULDER FROM STA. 335+53 TO STA. 347+00

LEGEND

- ① EXISTING P.C.C. PAVEMENT
- ② EXISTING CONCRETE BASE COURSE WIDENING
- ③ EXISTING SUB-BASE GRANULAR MATERIAL, TYPE C
- ④ EXISTING HMA SURFACE
- ⑤ EXISTING AGGREGATE BASE COURSE, TYPE A 12"
- ⑥ EXISTING LIME MODIFIED SOIL OR SUB-BASE GRANULAR MATERIAL TYPE C
- ⑦ EXISTING LIME MODIFIED SOIL 12"
- ⑧ EXISTING BITUMINOUS BASE COURSE 1 1/4"
- ⑨ EXISTING HMA LEVEL BINDER (MM), TYPE 2, 3/4"
- ⑩ EXISTING COMBINATION CONCRETE CURB & GUTTER, TYPE B-6.24
- ⑪ EXISTING HMA BASE COURSE WIDENING 11 1/2"
- ⑫ EXISTING HMA SHOULDERS 8"
- ⑬ EXISTING AGGREGATE SHOULDER
- ⑭ EXISTING HMA SURFACE COURSE, MIX N90, 2 1/4"
- ⑮ EXISTING AGGREGATE WEDGE SHOULDER, TYPE B
- ⑯ EXISTING SHOULDER RUMBLE STRIP
- ⑰ PROPOSED MICRO-SURFACE
- ⑱ PROPOSED BITUMINOUS MATERIALS (TACK COAT)
- ⑲ PROPOSED PAVEMENT MARKING (EDGE LINE)

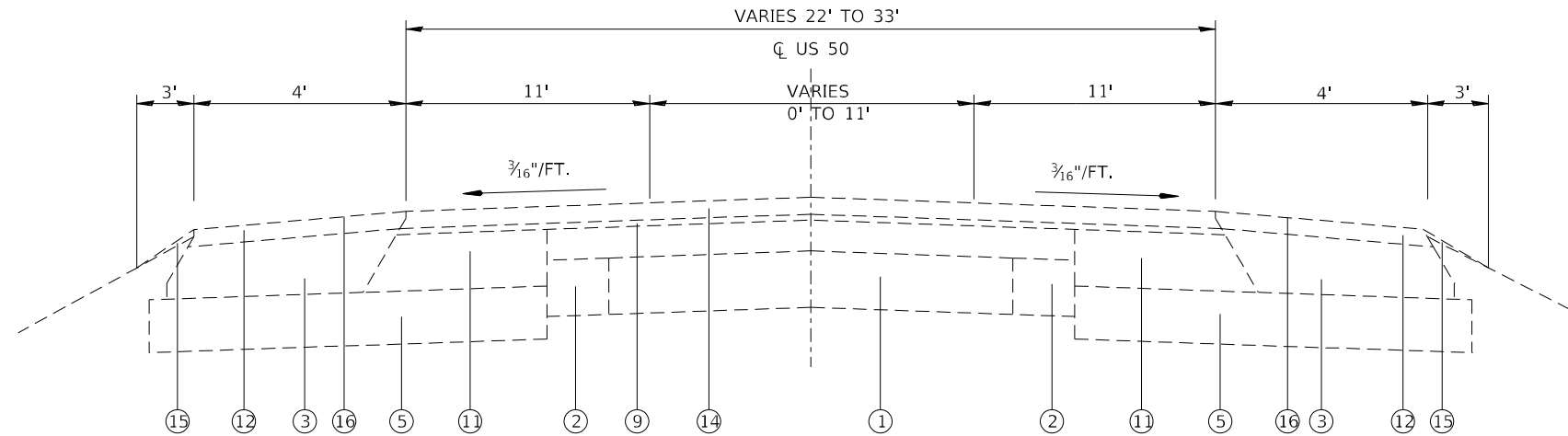
FILE NAME =	USER NAME = DIXONMA	DESIGNED -	REVISED -
pw:\planning\dot.illinois.gov\PIDOT\Documents\DOT Offices\District 8\Projects\0876N14\DWG\CAD\Sheets\0876N14-sh-typical.dwg		CHECKED -	REVISED -
		DATE -	REVISED -

STATE OF ILLINOIS
 DEPARTMENT OF TRANSPORTATION

TYPICAL SECTIONS

SCALE: NTS SHEET NO. 1 OF 4 SHEETS STA. TO STA.

F.A.P. RTE.	SECTION	COUNTY	TOTAL SHEETS	SHEET NO.
327A	(16,17,18)RS-4	MARION	13	5
FED. ROAD DIST. NO.			ILLINOIS FED. AID PROJECT	
			CONTRACT NO. 76N14	



EXISTING TYPICAL SECTION
 STA. 282+44.00 TO STA. 295+25.00

LEGEND

- ① EXISTING P.C.C. PAVEMENT
- ② EXISTING CONCRETE BASE COURSE WIDENING
- ③ EXISTING SUB-BASE GRANULAR MATERIAL, TYPE C
- ④ EXISTING HMA SURFACE
- ⑤ EXISTING AGGREGATE BASE COURSE, TYPE A 12"
- ⑥ EXISTING LIME MODIFIED SOIL OR SUB-BASE GRANULAR MATERIAL TYPE C
- ⑦ EXISTING LIME MODIFIED SOIL 12"
- ⑧ EXISTING BITUMINOUS BASE COURSE 1 1/4"
- ⑨ EXISTING HMA LEVEL BINDER (MM), TYPE 2, 3/4"
- ⑩ EXISTING COMBINATION CONCRETE CURB & GUTTER, TYPE B-6.24
- ⑪ EXISTING HMA BASE COURSE WIDENING 11 1/2"
- ⑫ EXISTING HMA SHOULDERS 8"
- ⑬ EXISTING AGGREGATE SHOULDER
- ⑭ EXISTING HMA SURFACE COURSE, MIX N90, 2 1/4"
- ⑮ EXISTING AGGREGATE WEDGE SHOULDER, TYPE B
- ⑯ EXISTING SHOULDER RUMBLE STRIP
- ⑰ PROPOSED MICRO-SURFACE
- ⑱ PROPOSED BITUMINOUS MATERIALS (TACK COAT)
- ⑲ PROPOSED PAVEMENT MARKING (EDGE LINE)

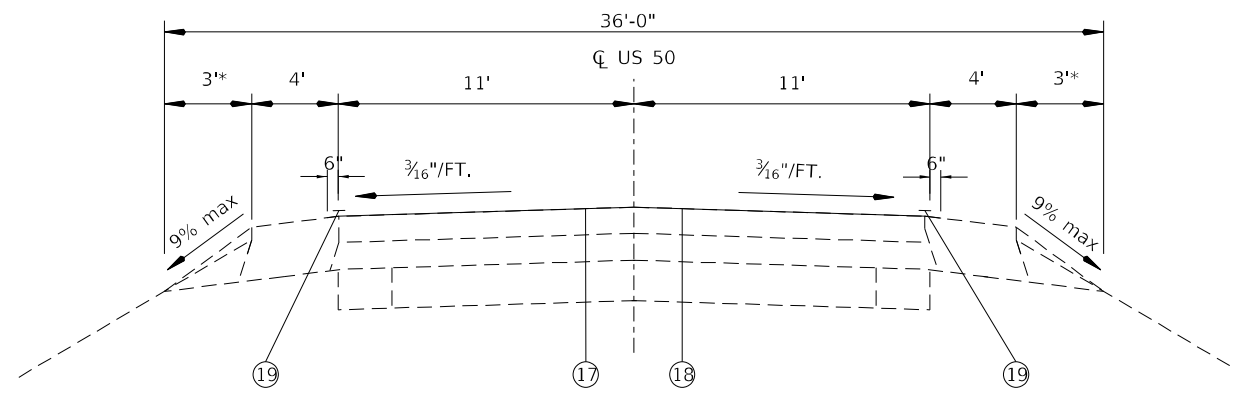
FILE NAME =	USER NAME = DIXONMA	DESIGNED -	REVISED -
pw:\planroom.dot\illinois.gov\PIDOT\Documents\DOT Offices\District 8\Projects\0876N14\DWG\CADsheets\0876N14-sh-typical.dwg		CHECKED -	REVISED -
	PLOT SCALE = 100.0000' / in.	DATE -	REVISED -
	PLOT DATE = 3/4/2021		

STATE OF ILLINOIS
 DEPARTMENT OF TRANSPORTATION

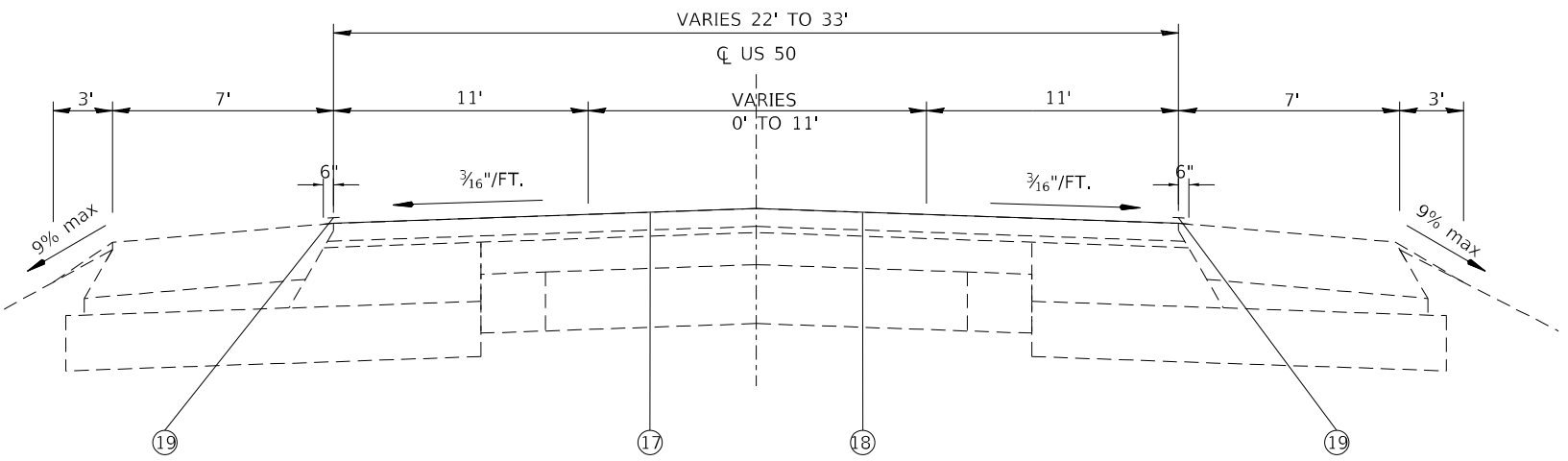
TYPICAL SECTIONS

SCALE: NTS SHEET NO. 2 OF 4 SHEETS STA. TO STA.

F.A.P. RTE.	SECTION	COUNTY	TOTAL SHEETS	SHEET NO.
327A	(16,17,18)RS-4	MARION	13	6
FED. ROAD DIST. NO. ILLINOIS FED. AID PROJECT			CONTRACT NO. 76N14	

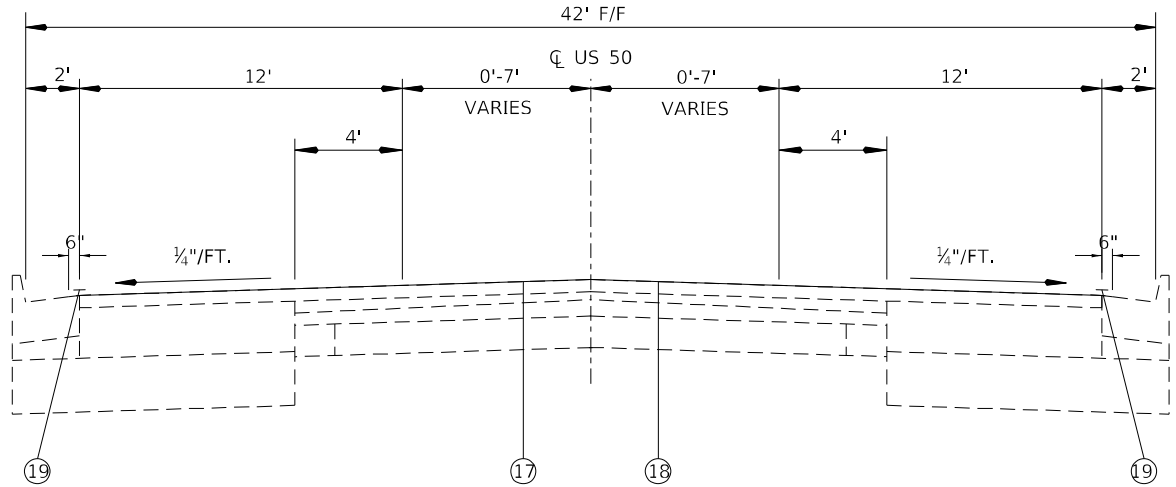


PROPOSED TYPICAL SECTION
 STA. 4+65.00 TO STA. 153+73.00
 STA. 192+62.00 TO STA. 245+37.00
 STA. 269+57.00 TO STA. 282+44.00
 STA. 295+25.00 TO STA. 335+53.00
 (STA. 189+38 TO STA. 192+62.00 - BRIDGE OMISSION)

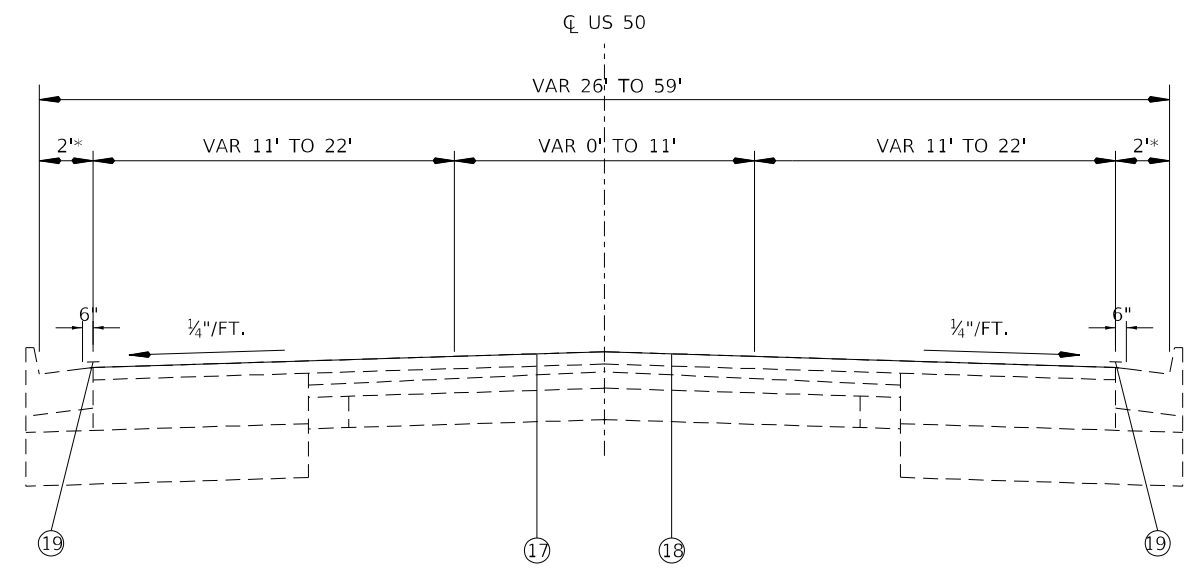


PROPOSED TYPICAL SECTION
 STA. 245+37.00 TO STA. 269+57.00

*5' AGGREGATE SHOULDER IN LOCATIONS AS SHOWN ON SCHEDULE



PROPOSED TYPICAL SECTION
 STA. 153+73.00 TO STA. 189+38.00
 (STA. 189+38 TO STA. 192+62.00 - BRIDGE OMISSION)



PROPOSED TYPICAL SECTION
 STA. 335+53.00 TO STA. 347+00.00
 *4' HMA AND 2' AGGREGATE SHOULDER FROM STA. 335+53 TO STA. 347+00

LEGEND

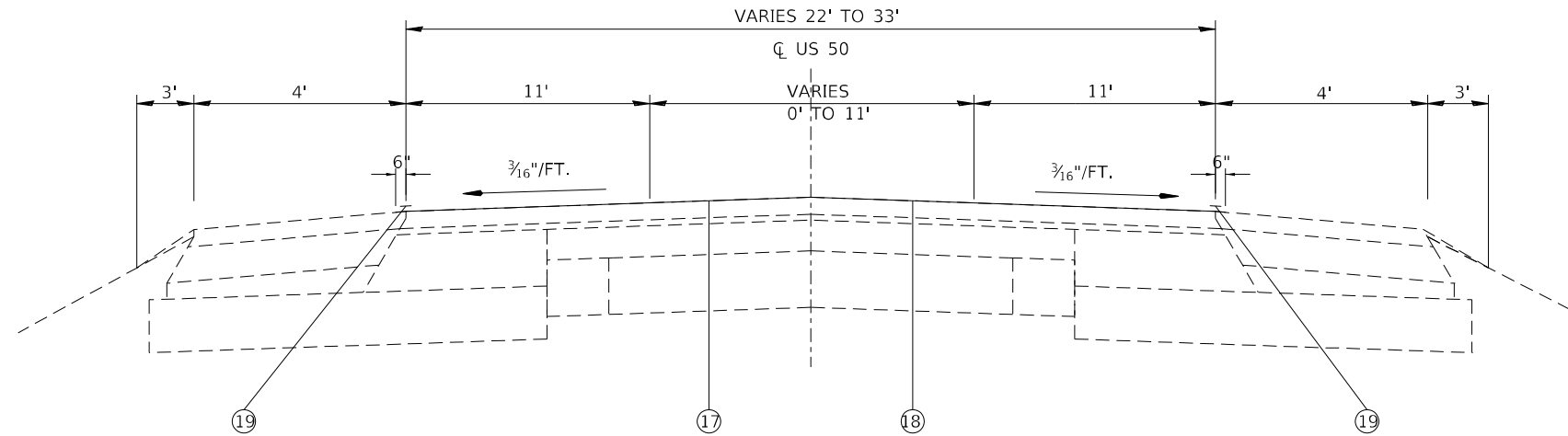
- ① EXISTING P.C.C. PAVEMENT
- ② EXISTING CONCRETE BASE COURSE WIDENING
- ③ EXISTING SUB-BASE GRANULAR MATERIAL, TYPE C
- ④ EXISTING HMA SURFACE
- ⑤ EXISTING AGGREGATE BASE COURSE, TYPE A 12"
- ⑥ EXISTING LIME MODIFIED SOIL OR SUB-BASE GRANULAR MATERIAL TYPE C
- ⑦ EXISTING LIME MODIFIED SOIL 12"
- ⑧ EXISTING BITUMINOUS BASE COURSE 1 1/4"
- ⑨ EXISTING HMA LEVEL BINDER (MM), TYPE 2, 3/4"
- ⑩ EXISTING COMBINATION CONCRETE CURB & GUTTER, TYPE B-6.24
- ⑪ EXISTING HMA BASE COURSE WIDENING 11 1/2"
- ⑫ EXISTING HMA SHOULDERS 8"
- ⑬ EXISTING AGGREGATE SHOULDER
- ⑭ EXISTING HMA SURFACE COURSE, MIX N90, 2 1/4"
- ⑮ EXISTING AGGREGATE WEDGE SHOULDER, TYPE B
- ⑯ EXISTING SHOULDER RUMBLE STRIP
- ⑰ PROPOSED MICRO-SURFACE
- ⑱ PROPOSED BITUMINOUS MATERIALS (TACK COAT)
- ⑲ PROPOSED PAVEMENT MARKING (EDGE LINE)

FILE NAME =	USER NAME = DIXONMA	DESIGNED -	REVISED -
pw:\plnroom.dot.illinois.gov\PIDOT\Documents\IDOT Offices\District 8\Projects\0876N14\DWG\CAD\Sheets\0876N14-sh-typical.dgn		CHECKED -	REVISED -
		DATE -	REVISED -

STATE OF ILLINOIS
 DEPARTMENT OF TRANSPORTATION

TYPICAL SECTIONS			
SCALE: NTS	SHEET NO. 3 OF 4 SHEETS	STA.	TO STA.

F.A.P. RTE.	SECTION	COUNTY	TOTAL SHEETS	SHEET NO.
327A	(16,17,18)RS-4	MARION	13	7
FED. ROAD DIST. NO.		ILLINOIS FED. AID PROJECT		
		CONTRACT NO. 76N14		



PROPOSED TYPICAL SECTION
 STA. 282+44.00 TO STA. 295+25.00

LEGEND

- ① EXISTING P.C.C. PAVEMENT
- ② EXISTING CONCRETE BASE COURSE WIDENING
- ③ EXISTING SUB-BASE GRANULAR MATERIAL, TYPE C
- ④ EXISTING HMA SURFACE
- ⑤ EXISTING AGGREGATE BASE COURSE, TYPE A 12"
- ⑥ EXISTING LIME MODIFIED SOIL OR SUB-BASE GRANULAR MATERIAL TYPE C
- ⑦ EXISTING LIME MODIFIED SOIL 12"
- ⑧ EXISTING BITUMINOUS BASE COURSE 1 1/4"
- ⑨ EXISTING HMA LEVEL BINDER (MM), TYPE 2, 3/4"
- ⑩ EXISTING COMBINATION CONCRETE CURB & GUTTER, TYPE B-6.24
- ⑪ EXISTING HMA BASE COURSE WIDENING 11 1/2"
- ⑫ EXISTING HMA SHOULDERS 8"
- ⑬ EXISTING AGGREGATE SHOULDER
- ⑭ EXISTING HMA SURFACE COURSE, MIX N90, 2 1/4"
- ⑮ EXISTING AGGREGATE WEDGE SHOULDER, TYPE B
- ⑯ EXISTING SHOULDER RUMBLE STRIP
- ⑰ PROPOSED MICRO-SURFACE
- ⑱ PROPOSED BITUMINOUS MATERIALS (TACK COAT)
- ⑲ PROPOSED PAVEMENT MARKING (EDGELINE)

FILE NAME =	USER NAME = DIXONMA	DESIGNED -	REVISED -	STATE OF ILLINOIS DEPARTMENT OF TRANSPORTATION	TYPICAL SECTIONS			F.A.P. RTE.	SECTION	COUNTY	TOTAL SHEETS	SHEET NO.
pw:\planroom.dot.illinois.gov\PIDOT\Documents\DOT Offices\District 8\Projects\0876N14\DWG\CAD\Sheets\0876N14-sh-t-typical.dgn			REVISED -		327A	(16,17,18)RS-4	MARION	13	8			
	PLOT SCALE = 100.0000' / in.	CHECKED -	REVISED -					CONTRACT NO. 76N14				
	PLOT DATE = 3/4/2021	DATE -	REVISED -		SCALE: NTS	SHEET NO. 4 OF 4 SHEETS	STA.	TO STA.	FED. ROAD DIST. NO.	ILLINOIS FED. AID PROJECT		

PAVEMENT MARKING																						
STATION	TO	STATION	LENGTH	EB/WB NB/SB	THERMOPLASTIC & TEMPORARY PAVEMENT MARKING							TEMPORARY PAVEMENT MARKING REMOVAL		SHORT TERM PAVEMENT MARKING		SHORT TERM PAVEMENT MARKING REMOVAL		PAVEMENT MARKING REMOVAL - GRINDING				
					LINE 4"				LINE 12"	LINE 12"	LINE 24"	LETTERS & SYMBOLS	WHITE	YELLOW	WHITE	YELLOW	WHITE	YELLOW	WHITE	YELLOW		
					WHITE	YELLOW		WHITE	YELLOW	24"	SKIP DASH										LANE LINE	LANE LINE
					FOOT	FOOT	FOOT	FOOT	FOOT	FOOT	FOOT	SQ FT	SQFT	SQFT	FOOT	FOOT	SQFT	SQFT	SQFT	SQFT		
RURAL																						
4+65 TO 132+46																						
4+65	TO	132+46	12781	EB/WB		25562								8521		2324		775		8521		
4+65	TO	132+46	12781	EB/WB											1066		291			97		1066
4+65	TO	5+65	100	EB/WB			400				5				139		37			13		139
URBAN																						
132+46 TO 151+00																						
132+46	TO	151+00	1854	EB/WB		3708								1236		338			113		1236	
132+46	TO	147+07	1461	EB/WB											122		34			12		122
146+21	TO	147+07	86	EB				86							29		8			3		29
147+07	TO	151+00	393	EB/WB				786							262		72			24		262
151+00 TO 189+38																						
151+00	TO	189+38	3838	EB/WB							264			264								264
151+00	TO	189+38	3838	EB/WB		7676								2559		698			233		2559	
151+00	TO	153+88	288	EB/WB				1152							520		118			40		520
151+00	TO	185+00	3400	EB/WB				6800	1700						2834		773			258		2834
185+00	TO	188+50	350	EB/WB				1400			156				623		142			48		623
188+50	TO	189+38	88	WB				176							59		16			6		59
168+60											90			90								90
172+87											90			90								90
177+00											90			90								90
181+78											81			81								81
192+62 TO 245+80																						
192+62	TO	245+80	5318	EB/WB		10636								3546		967			323		3546	
192+62	TO	200+36	774	EB/WB				774	194						323		88			30		323
200+36	TO	215+90	1554	EB/WB					389						130		36			12		130
215+90	TO	224+10	820	EB/WB				820	205						342		94			32		342
224+10	TO	236+06	1196	EB/WB				2392							798		218			73		798
236+06	TO	244+16	810	EB/WB				810	203						338		93			31		338
244+16	TO	245+80	164	EB/WB				328							110		30			10		110
245+80 TO 282+77																						
245+80	TO	282+77	3697	EB/WB		7394								2465		673			225		2465	
245+80	TO	248+16	236	EB/WB				944			78				393		93			31		393
248+16	TO	266+92	1876	EB/WB				3752	469			159	159	1407		384			128		159	1407
266+92	TO	269+38	246	EB/WB				984			80				408		97			33		408
269+38	TO	282+77	1339	EB/WB				2678							893		244			82		893
282+77 TO 296+00																						
282+77	TO	296+00	1323	EB/WB		2846								949		259			87		949	
282+77	TO	296+00	1323	EB/WB	73			4332			265		36	61	1709	7	418		3	140	61	1709
296+00 TO 341+00																						
296+00	TO	341+00	4500	EB/WB		8959								2987		815			272		2987	
296+00	TO	333+32	3732	EB/WB					933						311		85			29		311
331+32	TO	341+00	968	EB/WB	42			2998				18	32	1000	4	273	2		91	32	1000	
334+69	TO	341+00	631	EB/WB							209				209		19			7		209
341+00 TO 347+00																						
341+00	TO	347+00	600	EB/WB		1005								52							52	
341+00	TO	347+00	600	EB/WB	226			1622	82			27	335	103	568	92	155	7	52	31	103	568
342+13	TO	345+37	324	EB/WB							78				78		8			3		78
341+95				WB										48								48
342+13				WB										24								24
														12								12
RURAL :						25562	400	3196			5		8521	1205	2324	328	775	110	8521	1205		
URBAN :					341	42224	32834	4541	351	1002	62	504	15171	13466	3874	3498	1296	1175	15171	13466		
SUB TOTAL - RURAL :						29158			5			9726		2652		885		9726				
SUB TOTAL - URBAN :						79940			62	504		28637		7372		2471		28637				
TOTAL :						109098			62	504		38363		10024		3356		38363				

MODEL: Default
 FILE NAME: p:\pub\mroom.dwt
 PROJECT: 076N14-CD-DataCAD\Project\076N14-PC-Section.dwg

USER NAME = DIXONMA	DESIGNED -	REVISED -
	DRAWN -	REVISED -
PLOT SCALE = 1/22.5129' / in.	CHECKED -	REVISED -
PLOT DATE = 3/4/2021	DATE -	REVISED -

**STATE OF ILLINOIS
DEPARTMENT OF TRANSPORTATION**

**SCHEDULE OF
QUANTITIES**

SCALE: SHEET 1 OF 2 SHEETS STA. TO STA.

F.A.A RTE.	SECTION	COUNTY	TOTAL SHEETS	SHEET NO.
327A	(16,17,18)RS-4	MARION	13	9
CONTRACT NO. 76N14				
ILLINOIS FED. AID PROJECT				

MAINLINE PAVING						
LOCATION				BITUMINOUS MATERIALS - TACK COAT (POUND)		MICRO-SURFACING, SINGLE PASS (SQ YD)
STA	WIDTH (FT)	TO	STA	WIDTH (FT)		
RURAL						
4+65.00	+23.00	TO	132+46.00	+23.00	7349	32663
URBAN						
132+46.00	+23.00	TO	151+00.00	+23.00	1066	4738
151+00.00	+23.00	TO	153+88.00	+37.00	216	960
153+88.00	+37.00	TO	185+00.00	+37.00	2879	12794
185+00.00	+37.00	TO	188+50.00	+24.00	267	1186
188+50.00	+24.00	TO	189+38.00	+23.00	52	230
192+62.00	+23.00	TO	245+80.00	+23.00	3058	13590
245+80.00	+23.00	TO	248+16.00	+34.00	168	747
248+16.00	+34.00	TO	266+92.00	+34.00	1595	7087
266+92.00	+34.00	TO	269+38.00	+23.00	175	779
269+38.00	+23.00	TO	282+77.00	+23.00	170	3422
282+77.00	+23.00	TO	286+09.00	+34.00	237	1051
286+09.00	+34.00	TO	291+77.00	+34.00	483	2146
291+77.00	+34.00	TO	295+30.00	+23.00	252	1118
295+30.00	+23.00	TO	334+69.00	+23.00	2265	10066
334+69.00	+23.00	TO	340+13.00	+53.00	517	2297
340+13.00	+53.00	TO	347+00.00	+53.00	910	4046
SUB TOTAL - RURAL :					7349	32663
SUB TOTAL - URBAN :					14908	66257
TOTAL :					22257	98920

PARTIAL DEPTH PATCHING SCHEDULE, 2.5"						
PATCH #	EB/WB	STATION	LENGTH	WIDTH	REMOVAL TY II (SQ YD) *	PATCHING (TON)
RURAL						
1	EB	4+65.00	6	12	8.0	1.1
2	EB	20+49.00	6	12	8.0	1.1
3	WB	20+49.00	6	12	8.0	1.1
4	EB	31+05.00	6	12	8.0	1.1
5	EB	41+61.00	6	12	8.0	1.1
6	WB	41+61.00	6	12	8.0	1.1
7	EB	46+89.00	6	12	8.0	1.1
8	EB	57+45.00	6	12	8.0	1.1
9	EB	57+45.00	10	12	13.3	1.9
10	EB	62+73.00	6	12	8.0	1.1
11	WB	62+73.00	6	12	8.0	1.1
12	EB	78+57.00	6	12	8.0	1.1
13	EB	89+13.00	6	12	8.0	1.1
14	WB	89+13.00	6	12	8.0	1.1
15	EB	104+97.00	8	12	10.7	1.5
16	EB	120+81.00	6	12	8.0	1.1
URBAN						
17	EB	200+01.00	6	12	8.0	1.1
18	WB	200+01.00	6	12	8.0	1.1
19	WB	200+01.00	6	12	8.0	1.1
20	EB	200+01.00	6	12	8.0	1.1
21	EB	215+85.00	6	12	8.0	1.1
22	WB	215+85.00	6	12	8.0	1.1
23	WB	236+97.00	6	12	8.0	1.1
24	EB	236+97.00	6	12	8.0	1.1
25	EB	295+05.00	6	12	8.0	1.1
SUB TOTAL - RURAL :					136.0	19.0
SUB TOTAL - URBAN :					72.0	10.1
TOTAL :					208.0	29.1

*PARTIAL DEPTH PATCHING RECOMMENDED IN ALL LOCATIONS

RRPM SCHEDULE						
LOCATION			ONE-WAY CRYSTAL (EACH)	ONE-WAY AMBER (EACH)	TWO-WAY AMBER (EACH)	REMOVAL (EACH)
STA	TO	STA				
RURAL						
4+65	TO	132+46	0	0	160	160
URBAN						
132+46	TO	151+00	0	0	23	23
151+00	TO	187+50	0	0	183	183
187+50	TO	189+38	0	0	2	2
192+62	TO	245+80	0	0	66	66
245+80	TO	269+38	0	0	118	118
269+38	TO	282+77	0	0	17	17
282+77	TO	287+29	0	23	0	23
286+09	TO	288+60	7	0	0	7
287+29	TO	288+60	0	0	3	3
289+32	TO	290+68	0	0	3	3
289+32	TO	291+77	7	0	0	7
290+68	TO	295+30	0	23	0	23
295+30	TO	334+69	0	0	49	49
334+69	TO	341+00	0	32	0	32
339+13	TO	341+00	6	0	0	6
341+95	TO	345+28	9	0	0	9
342+13	TO	345+37	0	16	0	16
341+94	TO	347+00	7	0	0	7
343+31	TO	347+00	5	0	0	5
345+28	TO	347+00	0	0	9	9
SUB TOTAL - RURAL :			0	0	160	160
SUB TOTAL - URBAN :			41	94	474	609
TOTAL :				769		769

SIDE ROAD SCHEDULE	
LOCATION	
NAME	STA.
RURAL	
TOWNSHIP ROAD	79+72
FARTHING ROAD	132+46
URBAN	
NORTH SCOTT STREET	154+25
NORTH LINTON STREET	159+00
NORTH EVERETT STREET	164+79
NORTH MERRITT STREET	169+00
DEWOLF STREET	173+14
LAURY STREET	177+30
GREEN STREET	181+47
COURT STREET	198+00
WEST LINE ROAD	238+37
HOOTS CHAPEL ROAD	289+00
SELMVILLE ROAD	341+50

GRINDING SCHEDULE			
STATION	LT/RT	PCC SURFACE REMOVAL, VAR. DEPTH	HMA SURFACE REMOVAL, VAR. DEPTH
		SQ YD	SQ YD
URBAN			
168+70	RT	0	3
172+88	LT	0	2
177+00	LT	0	3
177+00	RT	0	3
181+79	RT	1	0
TOTAL :		1	11

BUMP REMOVAL SCHEDULE *				
LOCATION		LANE	BUMPS (EACH)	
FROM	TO			
RURAL				
4+65	57+45	EB	9	
4+65	57+45	WB	7	
57+45	110+25	EB	11	
57+45	110+25	WB	3	
URBAN/RURAL				
110+25	163+05	EB	6	
110+25	163+05	WB	7	
URBAN				
163+05	215+85	EB	3	
163+05	215+85	WB	2	
215+85	268+65	EB	2	
215+85	268+65	WB	11	
268+65	268+65	EB	11	
268+65	268+65	WB	11	
321+45	342+57	EB	4	
321+45	342+57	WB	4	
SUB TOTAL - RURAL :			43	
SUB TOTAL - URBAN :			48	
TOTAL :			91	

* LOCATIONS SHOWN IN THE PLANS ARE APPROXIMATE. ALL BUMP GRINDING SHALL BE PERFORMED ACROSS THE FULL WIDTH OF THE LANE. SEE TYPICAL SECTIONS FOR LANE WIDTHS

FIBER MODIFIED ASPHALT CRACK SEALING SCHEDULE				
LOCATION			LENGTH (FOOT)	COMMENTS
4+65	TO	339+40	100,425	3 JOINTS (CL/2 FOP) NOTE: SINGLE JOINT IN DUAL LEFT TURN SECTIONS
339+40	TO	344+68	2,625	5 JOINTS (CL/2 EOP/2 LANE) NOTE: SINGLE JOINT IN DUAL LEFT TURN SECTIONS
4+65	TO	344+68	1,500	VARIOUS LOCATIONS
SUB TOTAL - RURAL :			40,322	
SUB TOTAL - URBAN :			64,228	
TOTAL :			104,550	

*** CRACK SEALING EXACT LOCATIONS WILL BE DETERMINED BY THE ENGINEER

ADA SCHEDULE			
STATION	LT/RT	SIDEWALK REMOVAL & REPLACEMENT	DETECTABLE WARNINGS
		SQ FT	SQ FT
URBAN			
168+70	RT	75	12
172+88	LT	75	12
172+88	RT	78	12
177+00	LT	81	13
177+00	RT	81	13
181+79	RT	57	12
TOTAL :		448	74

MODEL: Default
FILE NAME: p:\pub\mroom.dwt\illinois.gov\PWIDOT\Documents\DOT Office\Drawings\Projects\0876N1\ACDD\Drawings\0876N1-14-19-2021.dwg

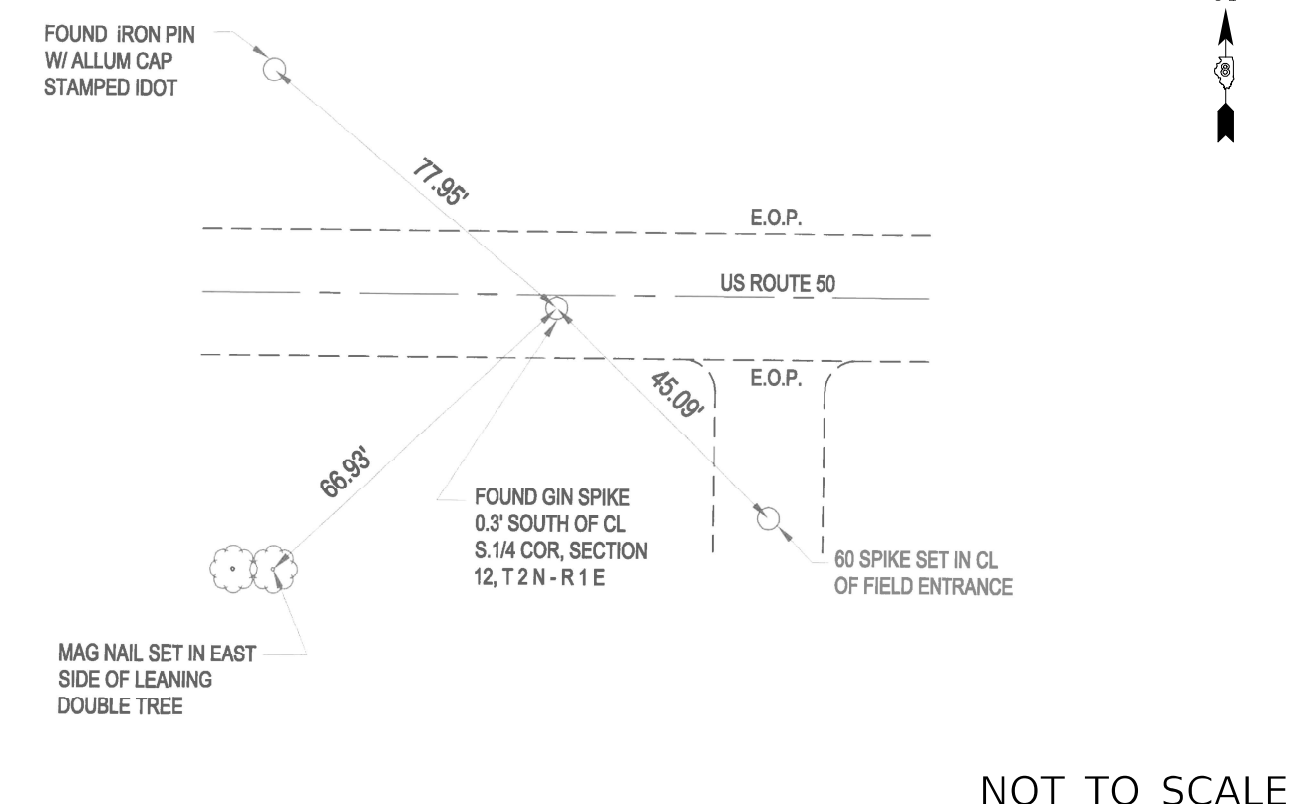
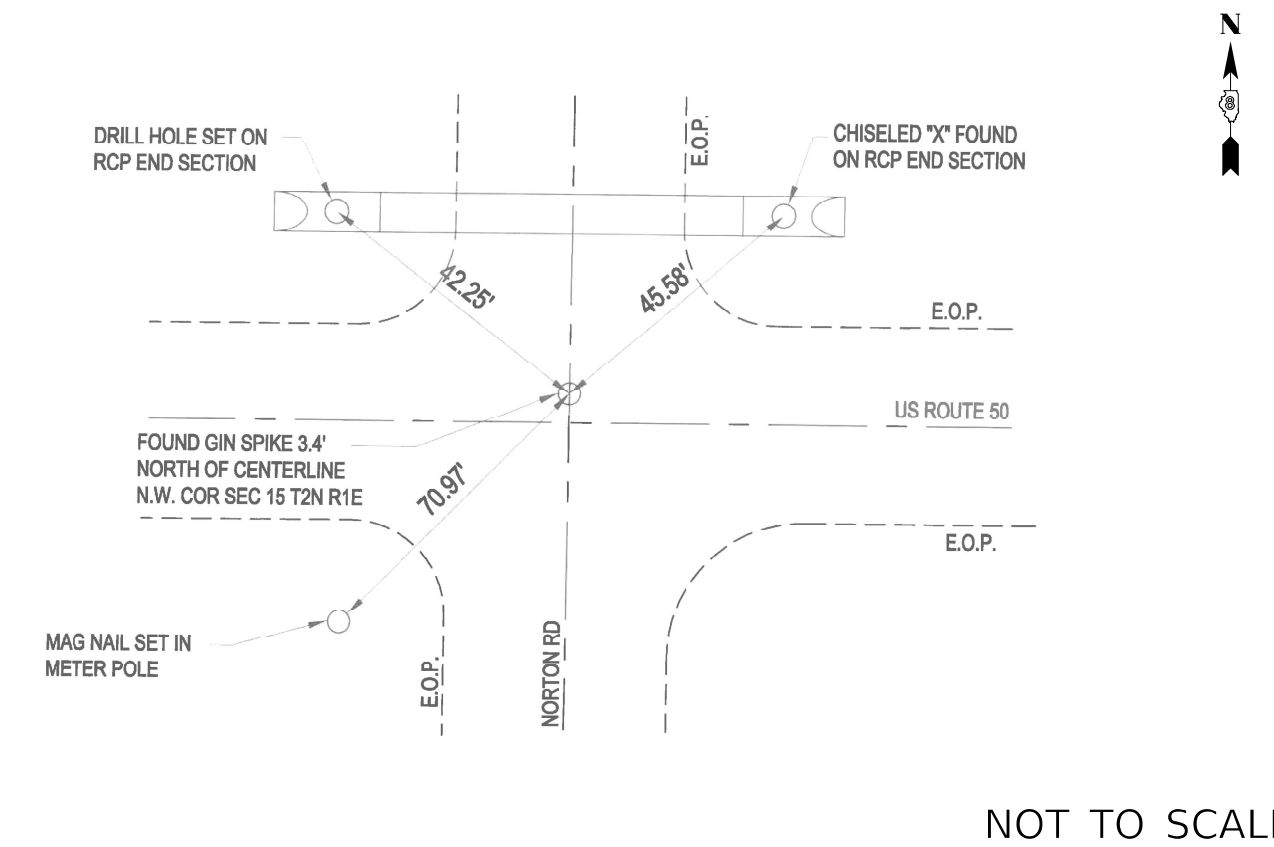
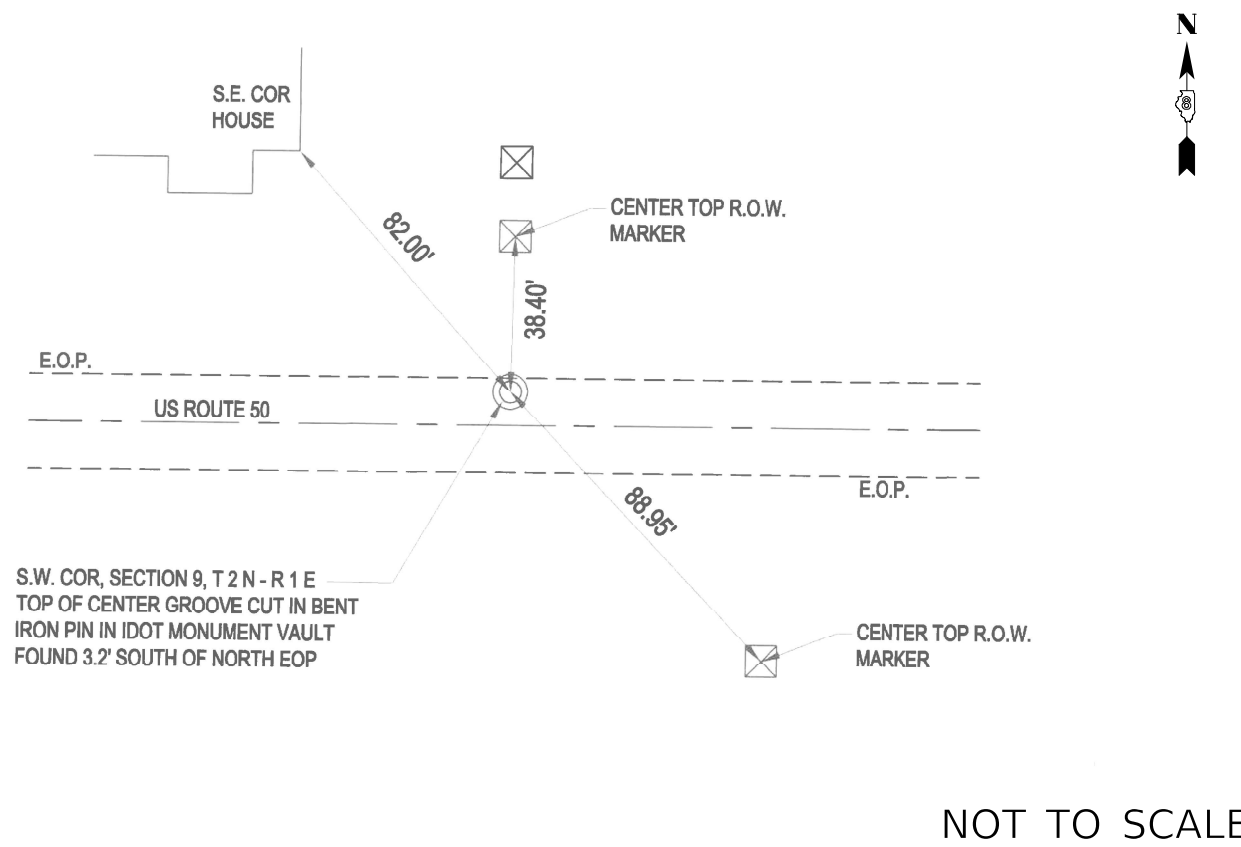
USER NAME = DIXONMA	DESIGNED -	REVISED -
	DRAWN -	REVISED -
PLOT SCALE = 1/22.5129' / in.	CHECKED -	REVISED -
PLOT DATE = 3/4/2021	DATE -	REVISED -

**STATE OF ILLINOIS
DEPARTMENT OF TRANSPORTATION**

**SCHEDULE OF
QUANTITIES**

SCALE: SHEET 2 OF 2 SHEETS STA. TO STA.

F.A.A. RTE.	SECTION	COUNTY	TOTAL SHEETS	SHEET NO.
327A	(16,17,18)RS-4	MARION	13	10
CONTRACT NO. 76N14				
ILLINOIS FED. AID PROJECT				



MODEL: Default
 FILE NAME: p:\planningroom.dwt\illinois.gov\PWIDOT\Documents\IDOT_Offices\District 8\Projects\076N14\CADData\CAD\Process\076N14-114-ATR.dgn

USER NAME = DIXONMA	DESIGNED -	REVISED -
	DRAWN -	REVISED -
PLOT SCALE = 100,0000' / in.	CHECKED -	REVISED -
PLOT DATE = 3/4/2021	DATE -	REVISED -

**STATE OF ILLINOIS
DEPARTMENT OF TRANSPORTATION**

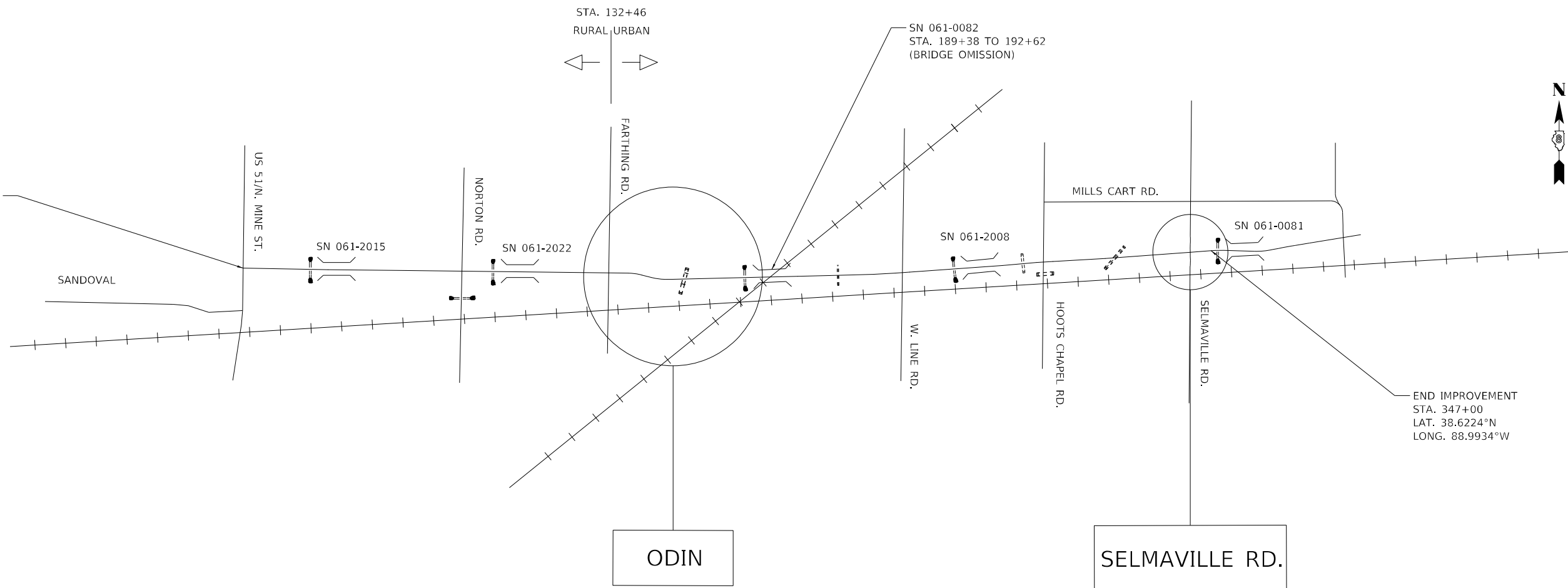
ALIGNMENT, TIES, AND BENCHMARKS

SCALE: SHEET 1 OF 1 SHEETS STA. TO STA.

F.A.P. RTE.	SECTION	COUNTY	TOTAL SHEETS	SHEET NO.
327A	(16,17,18)RS-4	MARION	13	11
CONTRACT NO. 76N14				
ILLINOIS FED. AID PROJECT				

MODEL: Default
 FILE NAME: p:\pub\mroom_dot_illinois.gov\PWIDOT\Documents\DOT_Offices\District 8\Projects\0676N1\A\060Data\CAD\Inches\0676N14-1r-Intersect.dwg

BEGIN IMPROVEMENT
 STA. 4+65
 LAT. 38.619971°N
 LONG. -89.112653°W

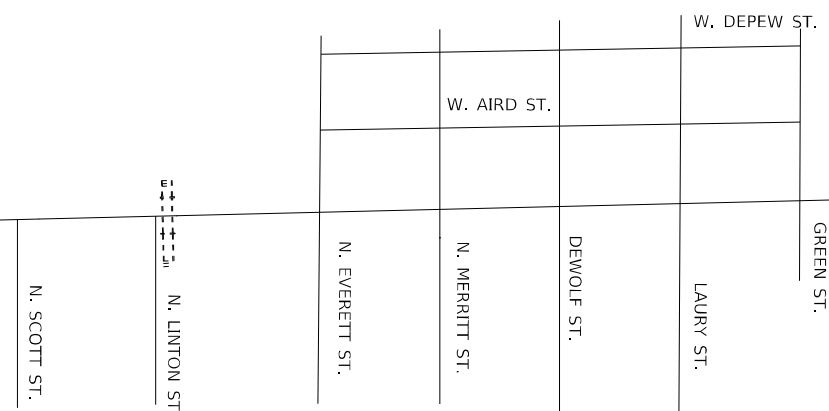


ODIN

SELMAVILLE RD.

END IMPROVEMENT
 STA. 347+00
 LAT. 38.6224°N
 LONG. 88.9934°W

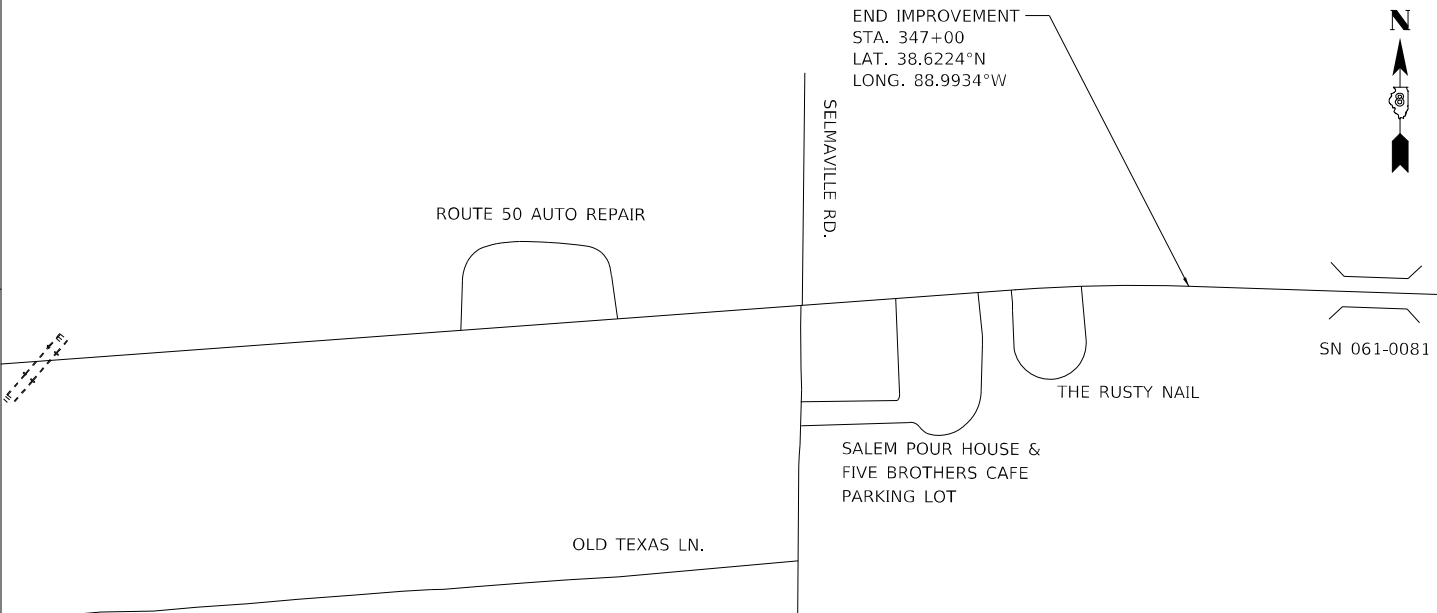
ODIN



SN 061-0082

SELMAVILLE RD.

END IMPROVEMENT
 STA. 347+00
 LAT. 38.6224°N
 LONG. 88.9934°W



SN 061-0081

USER NAME = DIXONMA	DESIGNED -	REVISED -
	DRAWN -	REVISED -
PLOT SCALE = 100,000' / in.	CHECKED -	REVISED -
PLOT DATE = 3/4/2021	DATE -	REVISED -

STATE OF ILLINOIS
 DEPARTMENT OF TRANSPORTATION

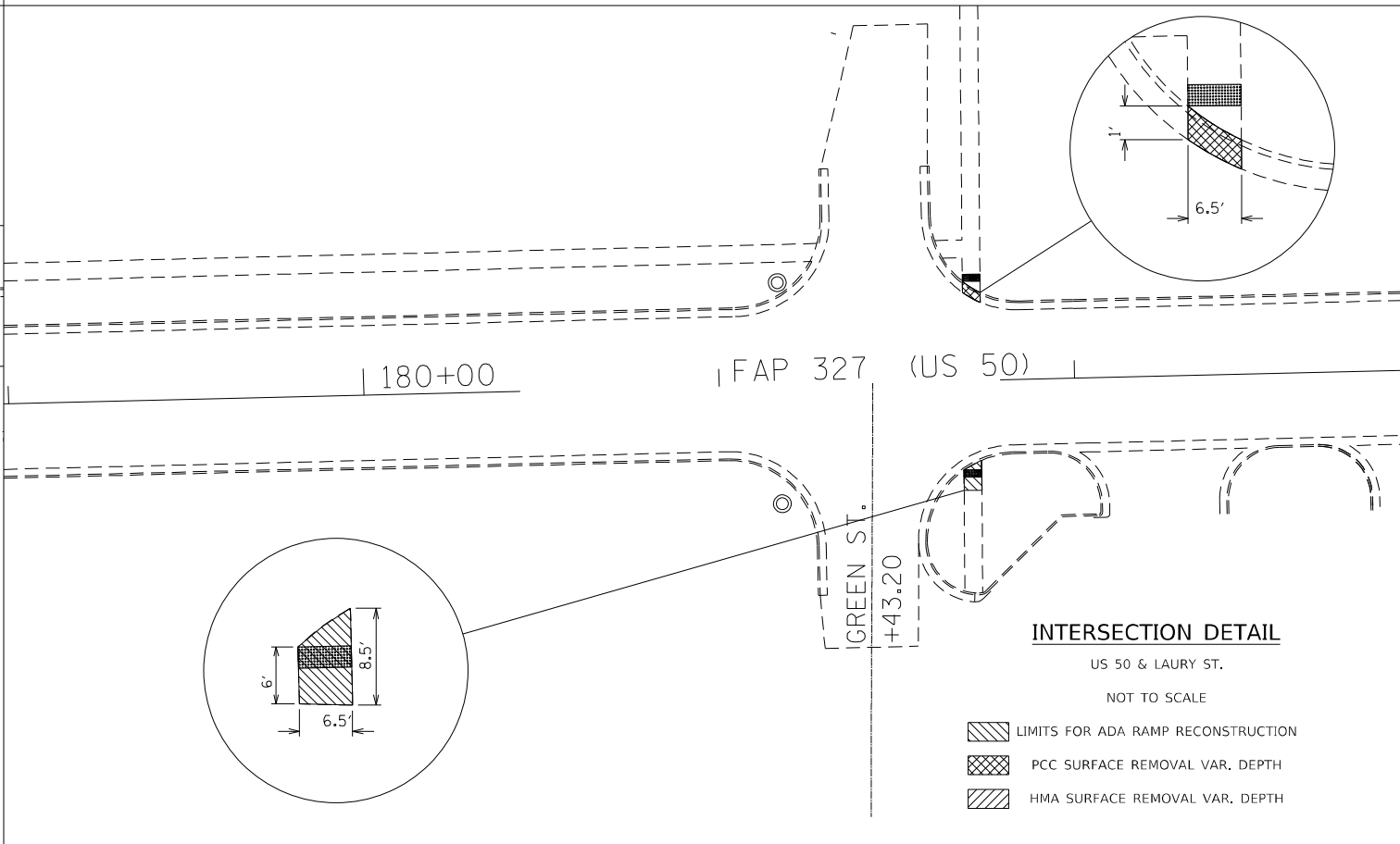
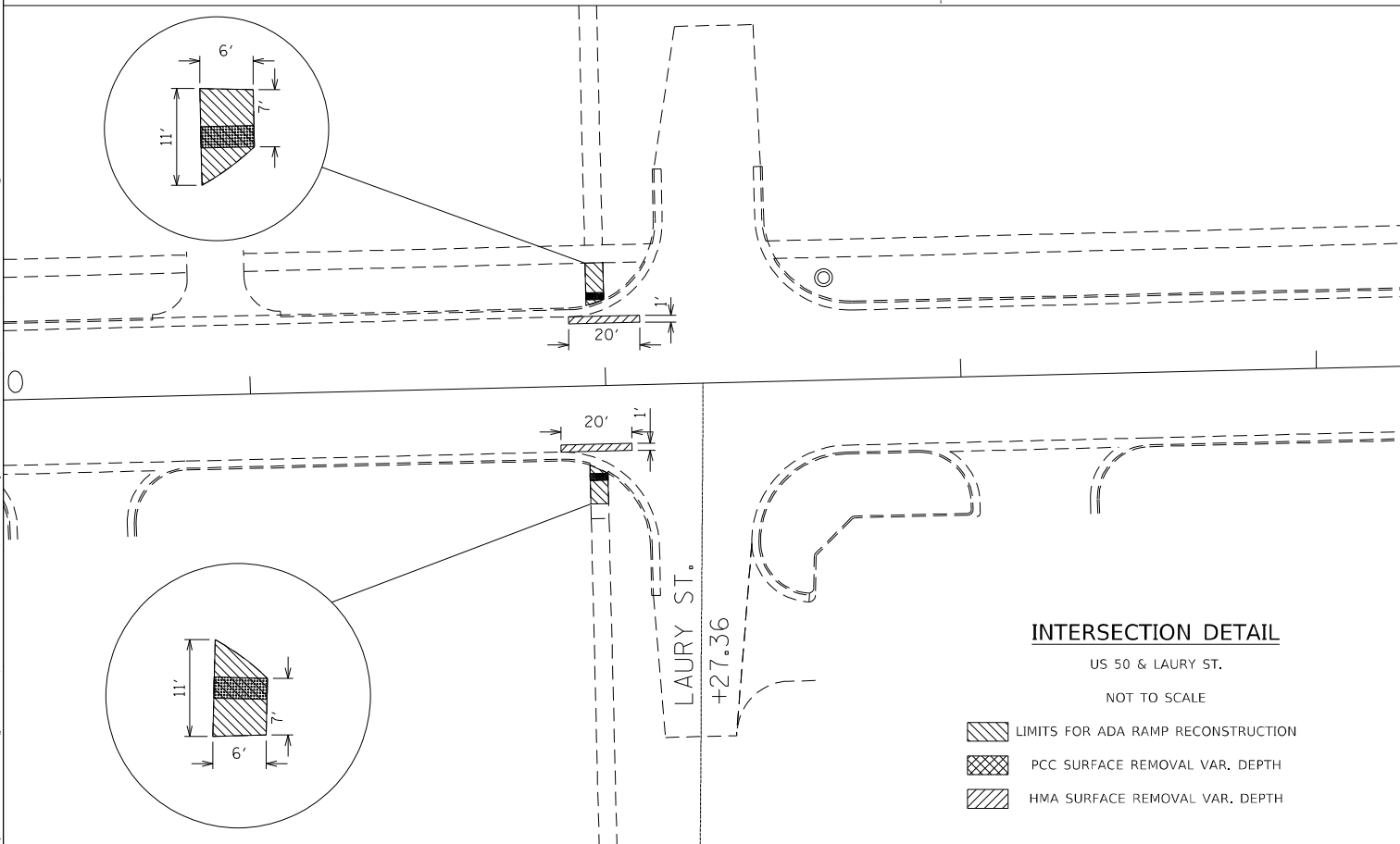
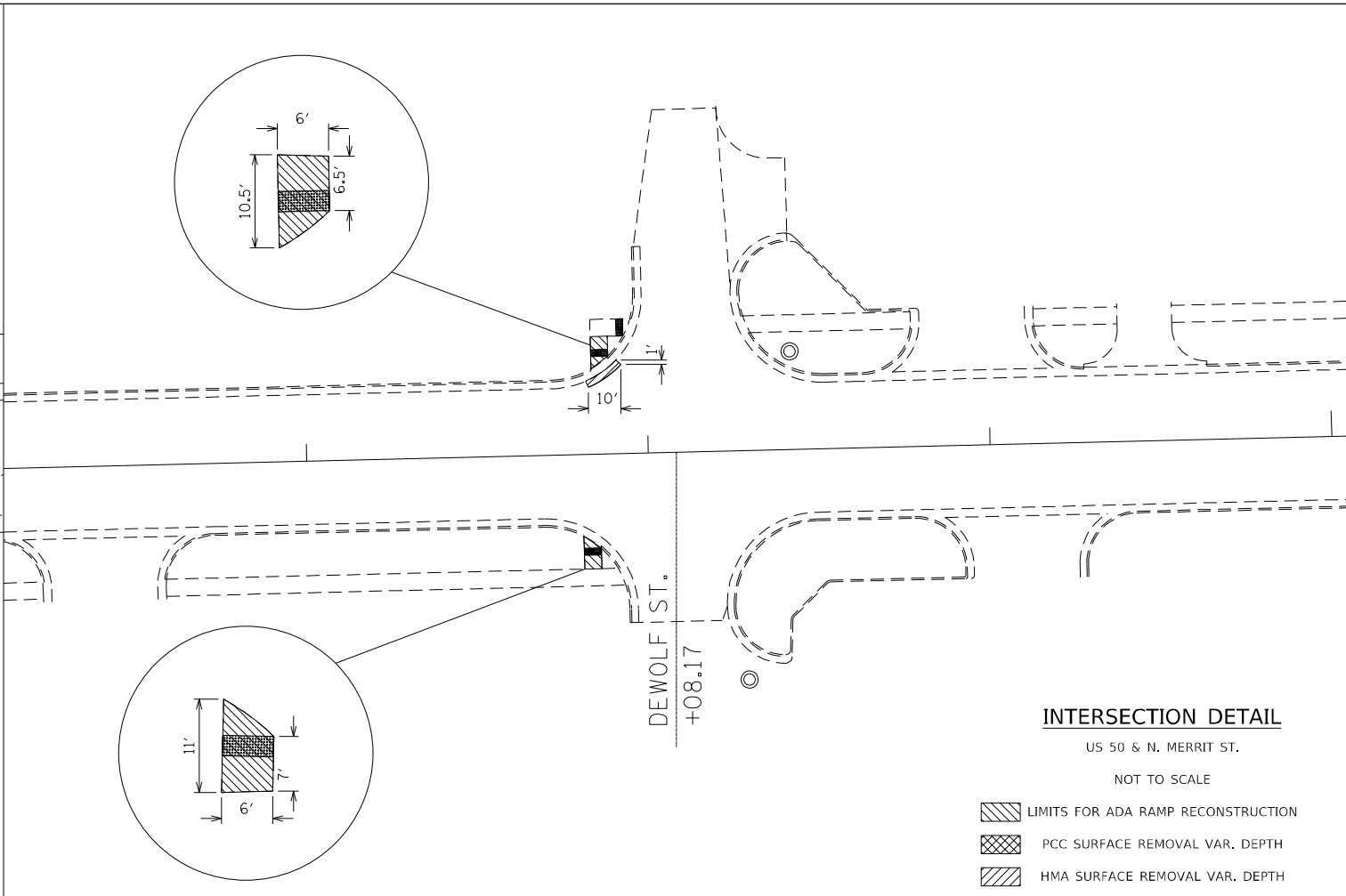
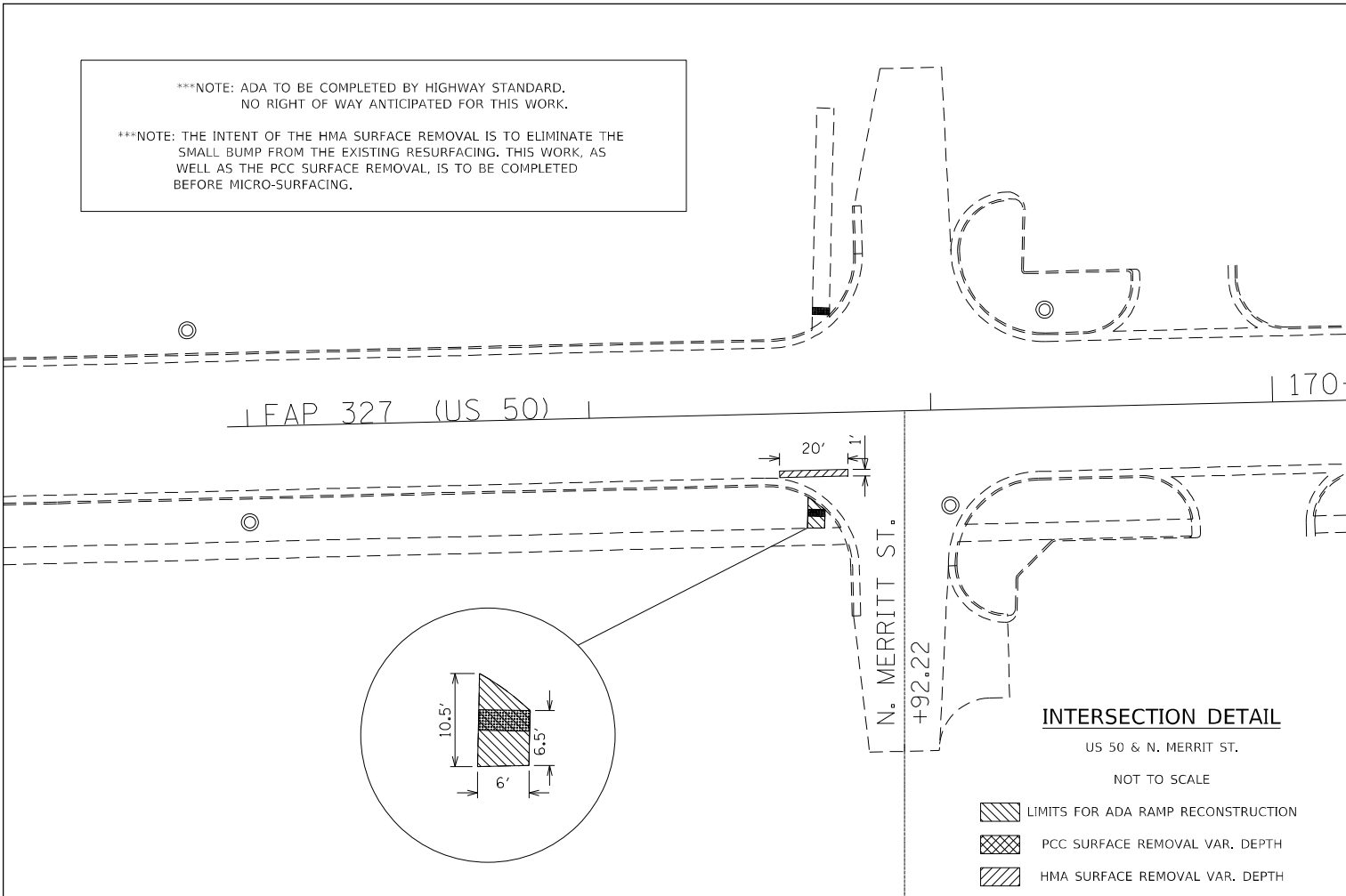
LOCATION MAP

SCALE: SHEET 1 OF 1 SHEETS STA. TO STA.

F.A.P. RTE.	SECTION	COUNTY	TOTAL SHEETS	SHEET NO.
327A	(16,17,18)RS-4	MARION	13	12
ILLINOIS FED. AID PROJECT			CONTRACT NO. 76N14	

***NOTE: ADA TO BE COMPLETED BY HIGHWAY STANDARD.
NO RIGHT OF WAY ANTICIPATED FOR THIS WORK.

***NOTE: THE INTENT OF THE HMA SURFACE REMOVAL IS TO ELIMINATE THE SMALL BUMP FROM THE EXISTING RESURFACING. THIS WORK, AS WELL AS THE PCC SURFACE REMOVAL, IS TO BE COMPLETED BEFORE MICRO-SURFACING.



MODEL: Default
 FILE NAME: p:\planningroom.dwg
 PROJECT: 327A
 OFFICE: DISTRICT
 DATE: 3/4/2021

USER NAME = DIXONMA	DESIGNED -	REVISED -
PLOT SCALE = 50,0000 * / in.	DRAWN -	REVISED -
PLOT DATE = 3/4/2021	CHECKED -	REVISED -
	DATE -	REVISED -

**STATE OF ILLINOIS
DEPARTMENT OF TRANSPORTATION**

SCALE:	SHEET 1	OF 1	SHEETS	STA.	TO STA.
--------	---------	------	--------	------	---------

F.A.P. RTE.	SECTION	COUNTY	TOTAL SHEETS	SHEET NO.
327A	(16,17,18)RS-4	MARION	13	13
CONTRACT NO. 76N14				
ILLINOIS FED. AID PROJECT				