

**STATE OF ILLINOIS**  
**DEPARTMENT OF TRANSPORTATION**  
**DIVISION OF HIGHWAYS**  
**PROPOSED**  
**HIGHWAY PLANS**

**FAI 74 ROUTE I-74**  
**SECTION (72-8)LS-12**  
**PROJECT: LANDSCAPING**  
**PEORIA COUNTY**

C-94-032-21

F.A.I. RTE.	SECTION	COUNTY	TOTAL SHEETS	SHEET NO.
74	(72-8)LS-12	PEORIA	10	1
		ILLINOIS	CONTRACT NO. 68G15	

**INDEX OF SHEETS**

- 1 COVER SHEET
- 2 GENERAL NOTES & COMMITMENTS
- 3 SUMMARY OF QUANTITIES
- 4 LOCATION MAP
- 5 SCHEDULE OF QUANTITIES
- 6 WEED SPRAY PLAN SHEET
- 7 EXISTING PLAN SHEET LAYOUT
- 8 PROPOSED PLAN SHEET LAYOUT
- 9 TRAFFIC CONTROL PLAN
- 10 HERBICIDE DOSAGE CHART

**HIGHWAY STANDARDS**

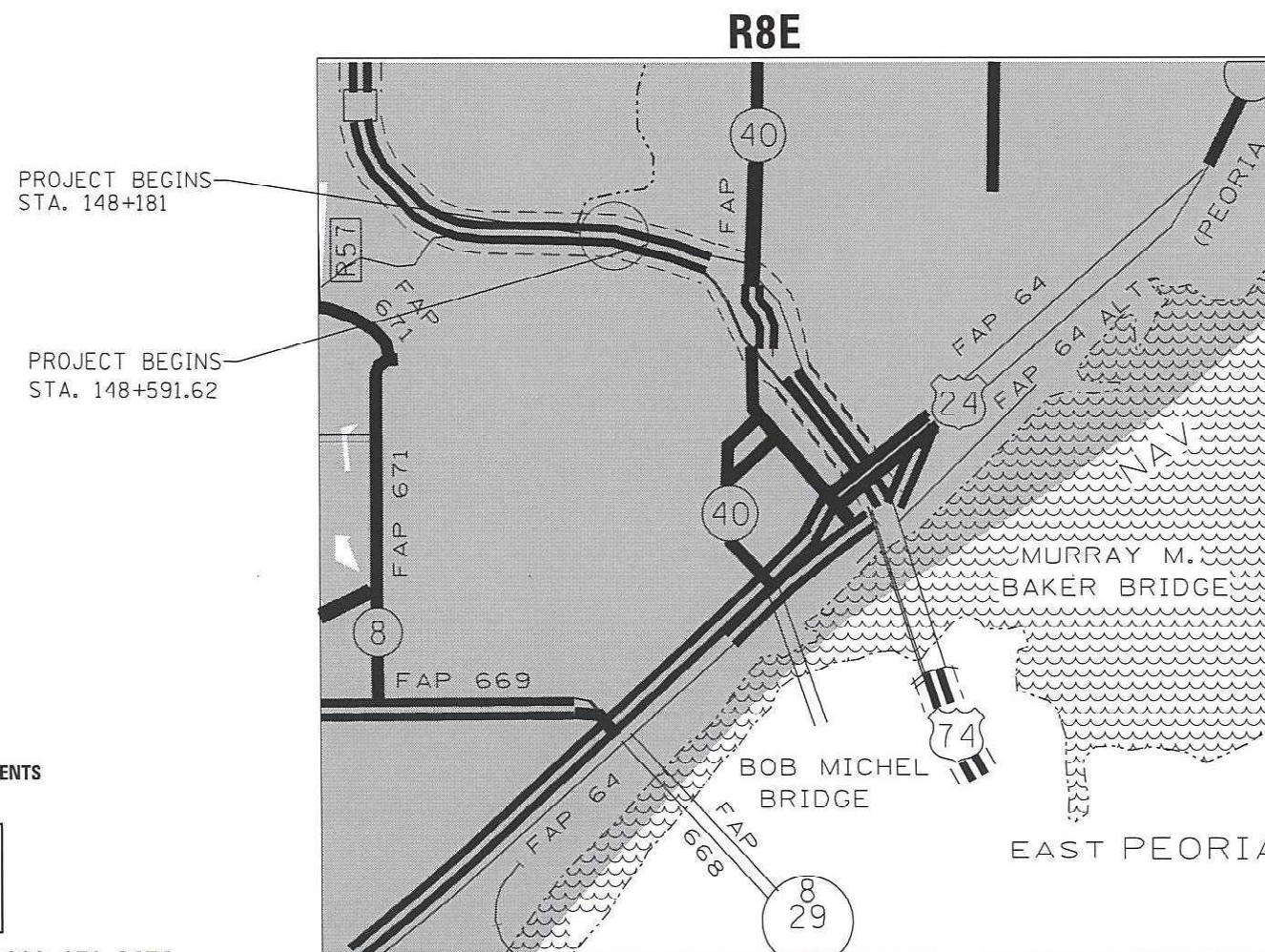
- 701101-05    701301-04
- 701106-02    701901-08
- 701201-05

FULL SIZE PLANS HAVE BEEN PREPARED USING STANDARD ENGINEERING SCALES. REDUCED SIZED PLANS WILL NOT CONFORM TO STANDARD SCALES. IN MAKING MEASUREMENTS ON REDUCED PLANS, THE ABOVE SCALES MAY BE USED.

J.U.L.I.E.  
 JOINT UTILITY LOCATION INFORMATION FOR EXCAVATION  
 1-800-892-0123  
 OR 811

**PROJECT ENGINEER: MAUREEN ADDIS 309-671-3454**  
**PROJECT MANAGER: BRITTANY GAVIN 309-671-4479**

**CONTRACT NO. 68G15**  
**CATALOG NO. 036147-00D**



GROSS LENGTH = 125.19 FT. = 0.02 MILE  
 NET LENGTH = 125.19 FT. = 0.02 MILE



**DESCRIPTION OF WORK**

THIS PROJECT INVOLVES LANDSCAPING MAINTENANCE ALONG WB I-74 FROM ELLIS STREET TO NORTH STREET IN PEORIA.

STATE OF ILLINOIS  
 DEPARTMENT OF TRANSPORTATION

SUBMITTED March 25, 2021  
James A. James  
 REGIONAL ENGINEER

May 7, 2021 James A. James  
 ENGINEER OF DESIGN AND ENVIRONMENT

May 7, 2021 James A. James  
 DIRECTOR OF HIGHWAYS PROJECT IMPLEMENTATION 13

**PRINTED BY THE AUTHORITY**  
**OF THE STATE OF ILLINOIS**

# GENERAL NOTES

## JOB SPECIFIC NOTES

The contractor will be responsible for field verification of locations for all landscaping items. Numbers indicated on the layouts are an estimate and do not reflect the exact total.

The removal of dead underbrush, debris, litter, and other miscellaneous items shall be completed and will be considered included in the cost of the associated pay items.

## WEED CONTROL, BROADLEAF IN TURF NOTES:

1. Contact Roadside Manager or Operations Field Engineer prior to commencing spray activities.
2. Spraying must be completed before any other contract activities take place. Two weeks minimum between spraying and planting.
3. Non-working equipment shall be repaired immediately with no additional time allotted to the contractor for repairs.
4. Spray operators shall keep a copy of contract spray locations with them at all times.
5. Wind speed must be < 15 mph in order to perform work.
6. Temperature must be > 45 degrees in order to perform work.
7. Daily inspections by Roadside Manager during the weed spraying operation.

# COMMITMENTS

Commitments are not to be altered without the written consent of all parties to which the commitment was made.

No Commitments have been made on this project.

FOR INFORMATION IN CASE OF  
A CHEMICAL EMERGENCY CALL:

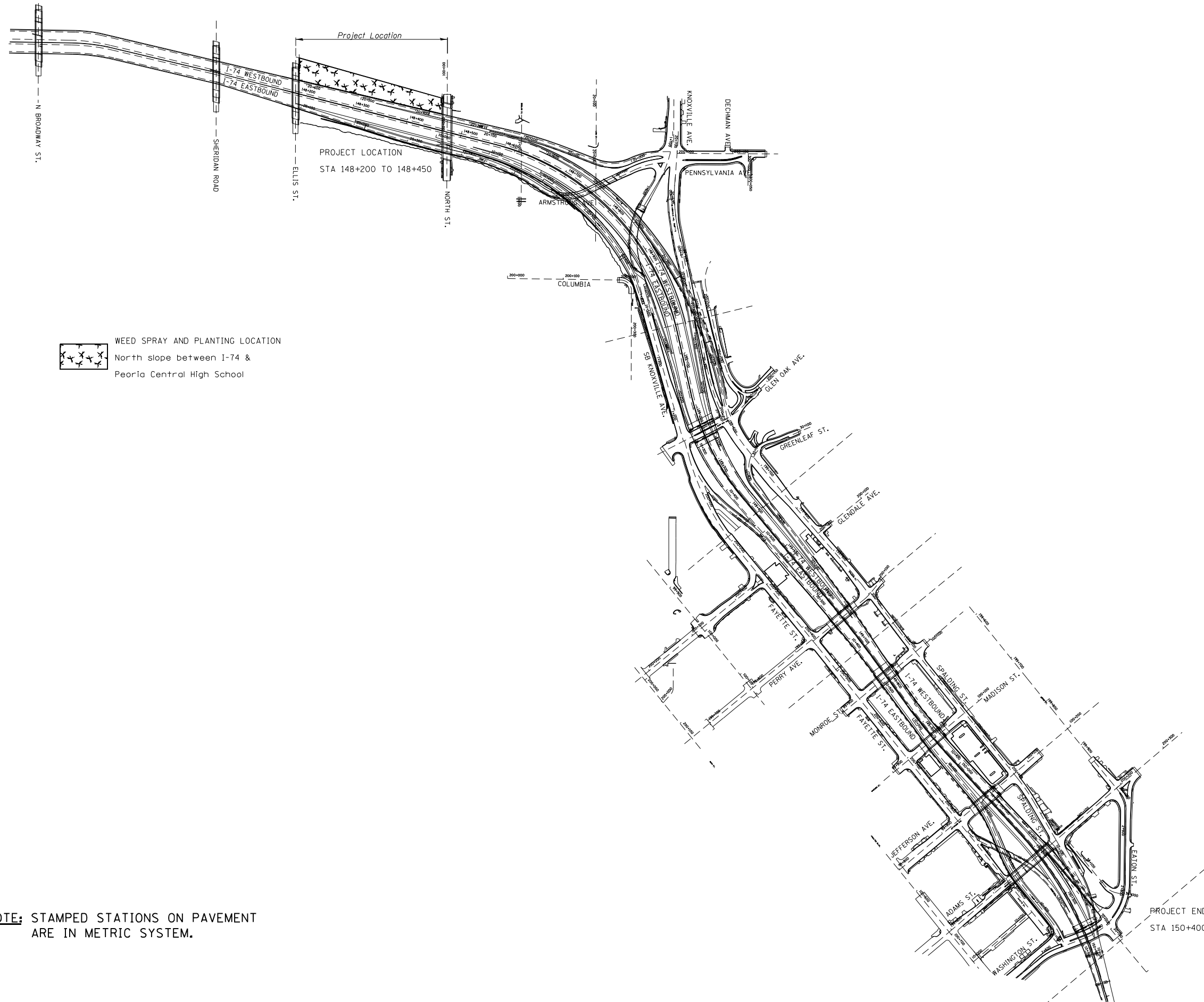
DOW AGRO AT 1-800-263-1196

MODEL Path: \\lancom01.dps.illinois.gov\PI\DOT\Documents\DOT\_Offices\District 4\Projects\04\_68G15\04000a\CAD\Drawings\0468G15-CADD.dgn  
 FILE NAME: 0468G15-CADD.dgn

USER NAME = everscd	DESIGNED -	REVISED -	<b>STATE OF ILLINOIS DEPARTMENT OF TRANSPORTATION</b>	<b>GENERAL NOTES &amp; COMMITMENTS CALENDAR OF LANDSCAPING ITEMS</b>	F.A.I. RTE.	SECTION	COUNTY	TOTAL SHEETS	SHEET NO.	
	DRAWN -	REVISED -			74	(72-8)LS-12	PEORIA	10	2	
PLOT SCALE = 78.7384 ' / in.	CHECKED -	REVISED -			CONTRACT NO. 68G15					
PLOT DATE = 3/24/2021	DATE -	REVISED -			ILLINOIS FED. AID PROJECT					
				SCALE:	SHEET	OF	SHEETS	STA.	TO STA.	







WEED SPRAY AND PLANTING LOCATION  
 North slope between I-74 &  
 Peoria Central High School

**NOTE:** STAMPED STATIONS ON PAVEMENT  
 ARE IN METRIC SYSTEM.

MODEL: Default  
 FILE NAME: p:\p\inroom\do\illinois\gov\PW\DOT\Documents\IBDOT\_Offices\District 4\Projects\I-74\_68G15\CADD\Drawings\I-74\68G15-CADD.dgn

USER NAME = everscl	DESIGNED -	REVISED -
	DRAWN -	REVISED -
PLOT SCALE = 78.7384' / in.	CHECKED -	REVISED -
PLOT DATE = 3/24/2021	DATE -	REVISED -

**STATE OF ILLINOIS  
 DEPARTMENT OF TRANSPORTATION**

**LOCATION MAP**

SCALE: SHEET OF SHEETS STA. TO STA.

F.A.I. RTE.	SECTION	COUNTY	TOTAL SHEETS	SHEET NO.
74	(72-8)LS-12	PEORIA	10	4
CONTRACT NO. 68G15				
ILLINOIS FED. AID PROJECT				

MODEL: Default  
FILE NAME: p:\1\inroom\dot\illinois.gov\p\DOT\Documents\DOT Offices\District 4\Projects\D4\_68G15\CADD\Drawings\4466G15-CADD.dgn

MOBILIZATION (67100100)			PERENNIAL PLANTS, ORNAMENTAL TYPE, 4" POT	PLANTERS UNIT	LAYOUT LOCATION L1	PLANT WATERING (K1004539)		
Location	UNIT	QTY				LOCATION	UNIT	
JOBSITE	L.SUM	1	OHIO SPIDERWORT	UNIT	4	JOBSITE	1	
Total		1	SILKY ASTER	UNIT	4	TOTAL	1	
PERENNIAL PLANT CARE (K0026850)			NEW ENGLAND ASTER	UNIT	3	Mowing (Special) (X2503110)		
LOCATION	SQ YD		PALE PURPLE CONEFLOWER	UNIT	3	Location	SQ FT	ACRES
LAYOUT 1	2165.62		ROUGH BLAZING STAR	UNIT	4	Layout 1	30410.81	0.70
TOTAL	2165.62		LEAD PLANT	UNIT	3	Total		2.79
WEED CONTROL, BROADLEAF IN TURF (K0029618)			PURPLE PRAIRIE CLOVER	UNIT	3	Total for contract = 2.8 Acres (2 times per 2 months)		
LOCATION	UNIT	QTY	LUPINE	UNIT	3	TRAFFIC CONTROL AND PROTECTION (SPECIAL) (X7010216)		
JOBSITE	GALLON	0.1	BOTTLE GENTIAN	UNIT	0.4	Location	UNIT	QTY
TOTAL		0.1	SWAMP MILKWEED	UNIT	0.5	JOBSITE	L.SUM	1
			DOWNY GENTIAN	UNIT	2	TOTAL		1
			WILD BERGAMOT	UNIT	3	SELECTIVE CLEARING (Z0064600)		
			LARGE BEARDTONGUE	UNIT	4	LOCATION	Acre	
			PRAIRIE VIOLET	UNIT	4	LAYOUT 1	0.45	
			PRAIRIE MILKWEED	UNIT	2	TOTAL	0.45	
			SHOOTING STAR	UNIT	3			
			PRAIRIE SMOKE	UNIT	4			
			BUTTERFLY MILKWEED	UNIT	3			
			TURK'S CAP LILY	UNIT	0.2			
			COLUMBINE	UNIT	4			
			INDIAN PAINTBRUSH	UNIT	5			
			GOLDEN ALEXANDERS	UNIT	0.5			
			PRAIRIE COREOPSIS	UNIT	3			
			EARLY SUNFLOWER	UNIT	3			
			HOARY PUCCOON	UNIT	3			
			SHOWY GOLDENROD	UNIT	3			
			CREAM WILD INDIGO	UNIT	3			
			WOOD BETONY	UNIT	5			
			RATTLESNAKE MASTER	UNIT	3			
			WHITE SAGE	UNIT	3			
			WILD QUININE	UNIT	4			
			CANADIAN MILK VETCH	UNIT	3			
			WHITE PRAIRIE CLOVER	UNIT	2			
			PENSTEMON	UNIT	3			
			CULVER'S ROOT	UNIT	3			
			GREEN MILKWEED	UNIT	2			
			TOTAL		105.6			

NOTE: 1 UNIT = 100 PLANTS

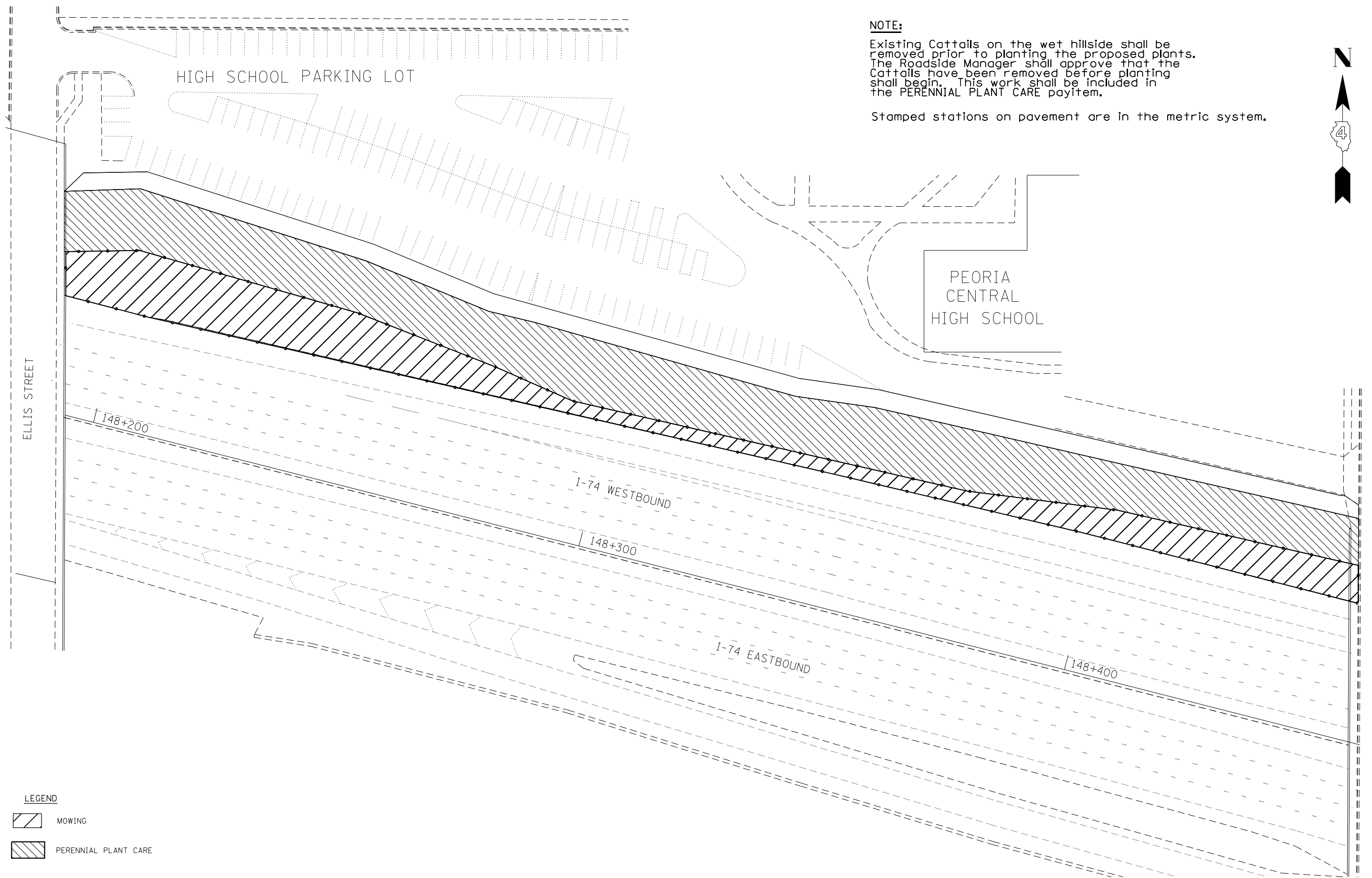
USER NAME = eversd	DESIGNED -	REVISED -	<b>STATE OF ILLINOIS DEPARTMENT OF TRANSPORTATION</b>	<b>SCHEDULE OF QUANTITIES</b>				F.A.I. RTE.	SECTION	COUNTY	TOTAL SHEETS	SHEET NO.		
PLOT SCALE = 78,7384' / in.	DRAWN -	REVISED -		SCALE:	SHEET	OF	SHEETS	STA.	TO STA.	74	(72-8)LS-12	PEORIA	10	5
PLOT DATE = 3/24/2021	CHECKED -	REVISED -		CONTRACT NO. 68G15										
	DATE -	REVISED -		ILLINOIS FED. AID PROJECT										



**NOTE:**

Existing Cattails on the wet hillside shall be removed prior to planting the proposed plants. The Roadside Manager shall approve that the Cattails have been removed before planting shall begin. This work shall be included in the PERENNIAL PLANT CARE payitem.

Stamped stations on pavement are in the metric system.



**LEGEND**

- MOWING
- PERENNIAL PLANT CARE

MODEL: Default  
FILE NAME: p:\hdm\moo\hdm\illinois\pwr\pwr\DOT\Documents\IBOT\_Offices\Dist\ref\_4\Projects\DA\_68G15\CAD\Drawings\DA68G15-CADD.dgn

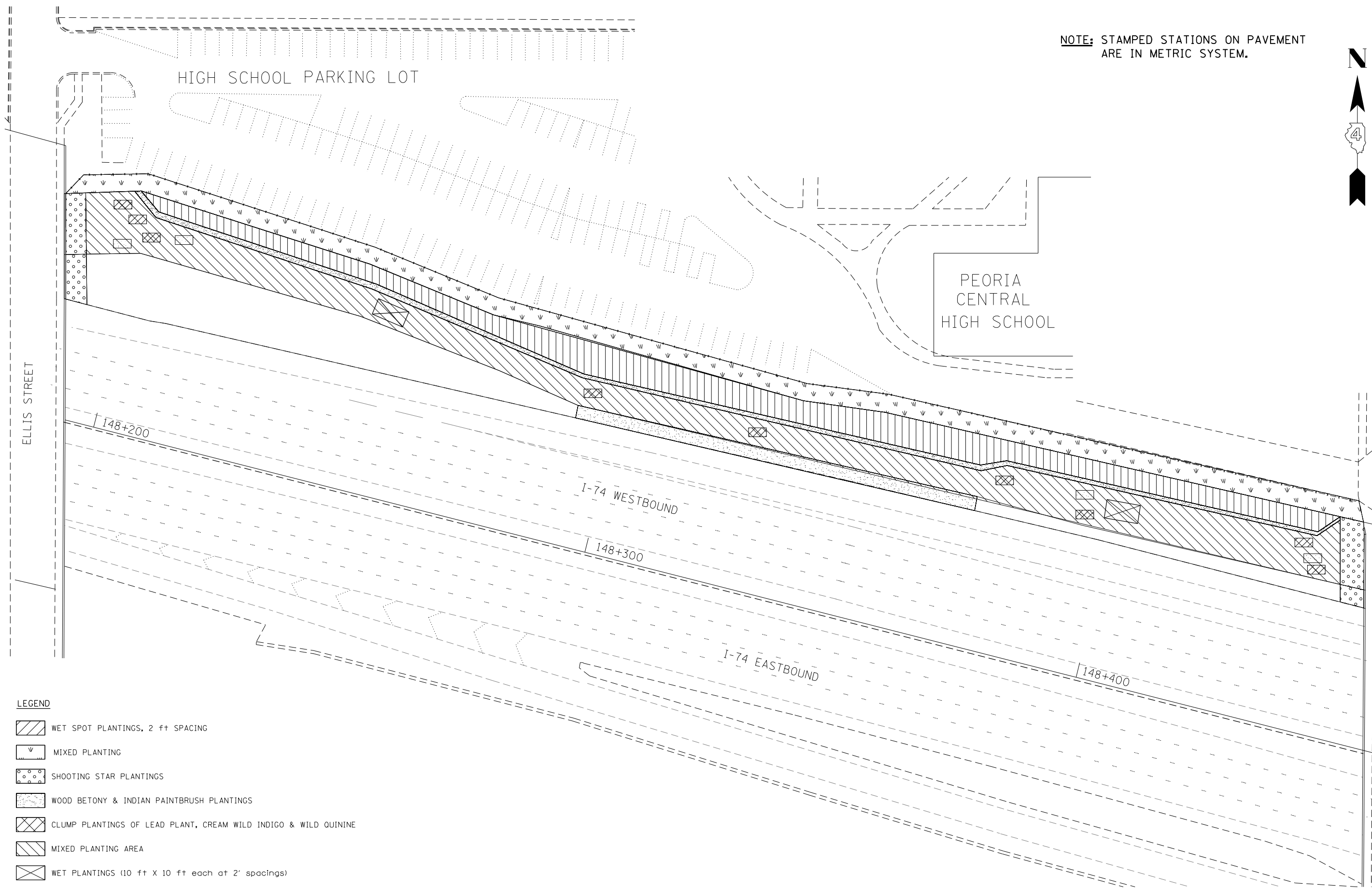
USER NAME = everscl	DESIGNED -	REVISED -
	DRAWN -	REVISED -
PLOT SCALE = 78.7384' / in.	CHECKED -	REVISED -
PLOT DATE = 3/24/2021	DATE -	REVISED -

**STATE OF ILLINOIS  
DEPARTMENT OF TRANSPORTATION**

EXISTING PLAN SHEET LAYOUT				
SCALE:	SHEET	OF	SHEETS	STA. TO STA.

F.A.I. RTE. 74	SECTION (72-8)LS-12	COUNTY PEORIA	TOTAL SHEETS 10	SHEET NO. 7
ILLINOIS FED. AID PROJECT			CONTRACT NO. 68G15	

**NOTE:** STAMPED STATIONS ON PAVEMENT ARE IN METRIC SYSTEM.



**LEGEND**

- WET SPOT PLANTINGS, 2 ft SPACING
- MIXED PLANTING
- SHOOTING STAR PLANTINGS
- WOOD BETONY & INDIAN PAINTBRUSH PLANTINGS
- CLUMP PLANTINGS OF LEAD PLANT, CREAM WILD INDIGO & WILD QUININE
- MIXED PLANTING AREA
- WET PLANTINGS (10 ft X 10 ft each at 2' spacings)

MODEL: Default  
 FILE NAME: p:\work\11111111\11111111\DOT\Documents\DOT\_Offices\Dist\et\_4\Projects\SD4\_68G\15\CAD\DWG\CADDrawings\14866\15\CAD\DWG

USER NAME = everscl	DESIGNED -	REVISED -
	DRAWN -	REVISED -
PLOT SCALE = 76.7384' / in.	CHECKED -	REVISED -
PLOT DATE = 3/24/2021	DATE -	REVISED -

**STATE OF ILLINOIS  
DEPARTMENT OF TRANSPORTATION**

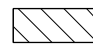

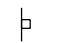

**PROPOSED PLAN SHEET LAYOUT**

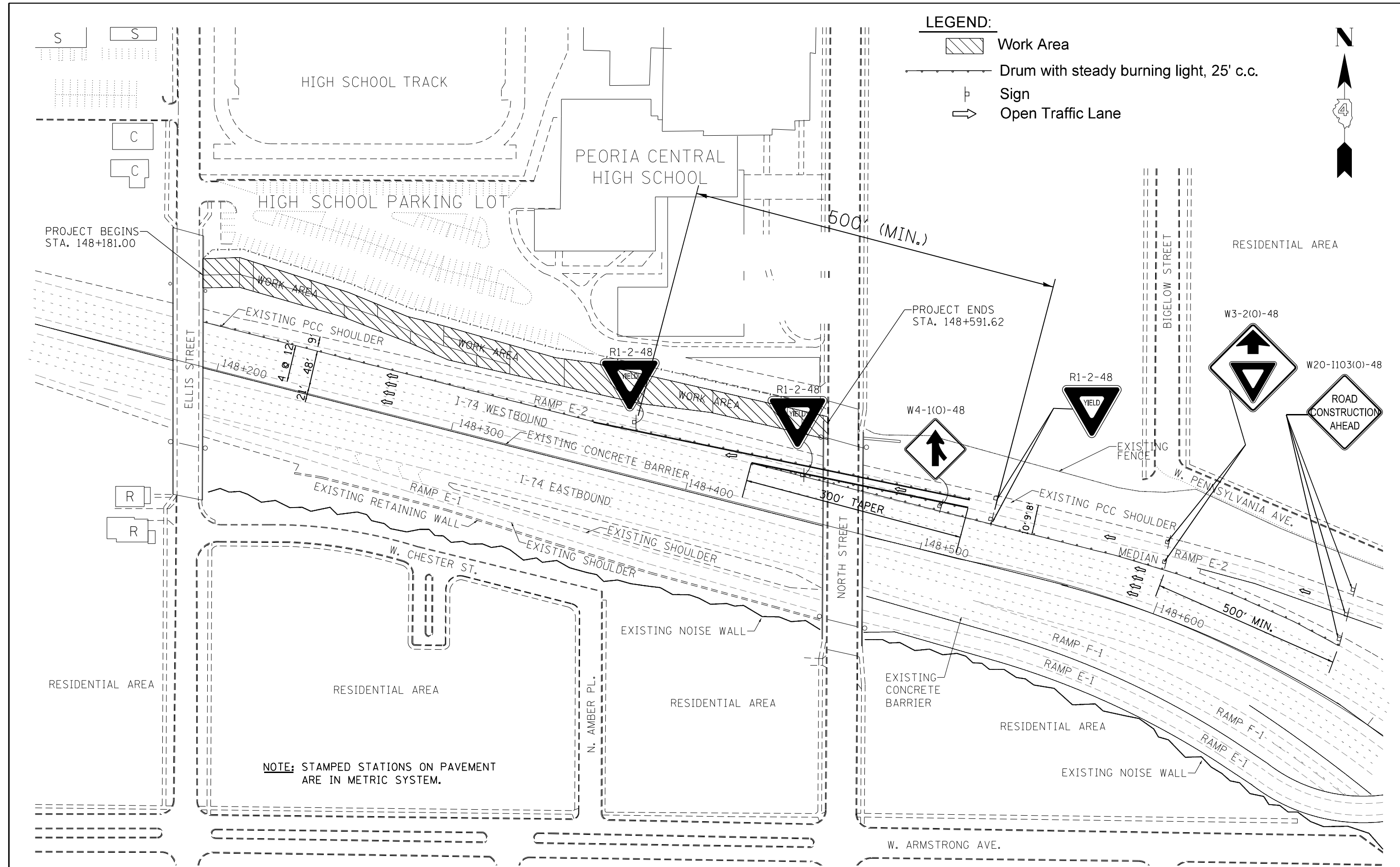
SCALE: SHEET OF SHEETS STA. TO STA.

F.A.I. RTE.	SECTION	COUNTY	TOTAL SHEETS	SHEET NO.
74	(72-8)LS-12	PEORIA	10	8
ILLINOIS FED. AID PROJECT			CONTRACT NO. 68G15	



**LEGEND:**

-  Work Area
-  Drum with steady burning light, 25' c.c.
-  Sign
-  Open Traffic Lane



**NOTE:** STAMPED STATIONS ON PAVEMENT ARE IN METRIC SYSTEM.

DRAWING NOT TO SCALE

FILE NAME =	USER NAME = everscl	DESIGNED -	REVISED -	<b>STATE OF ILLINOIS DEPARTMENT OF TRANSPORTATION</b>	<b>TRAFFIC CONTROL PLAN</b>			F.A.I. RTE.	SECTION	COUNTY	TOTAL SHEETS	SHEET NO.
pwt:\planroom.dot\illinois.gov\PWIDOT\Documents\IDOT Offices\District 4\Projects\04.68G15\CADD\Drawings\0468G15-CADD.dgn	PLOT SCALE = 78.7384' / in.	CHECKED -	REVISED -					74	(72-8)LS-12	PEORIA	10	9
Default	PLOT DATE = 3/24/2021	DATE -	REVISED -		SCALE: SHEET OF SHEETS STA. TO STA.			CONTRACT NO. 68G15				
							ILLINOIS FED. AID PROJECT					

