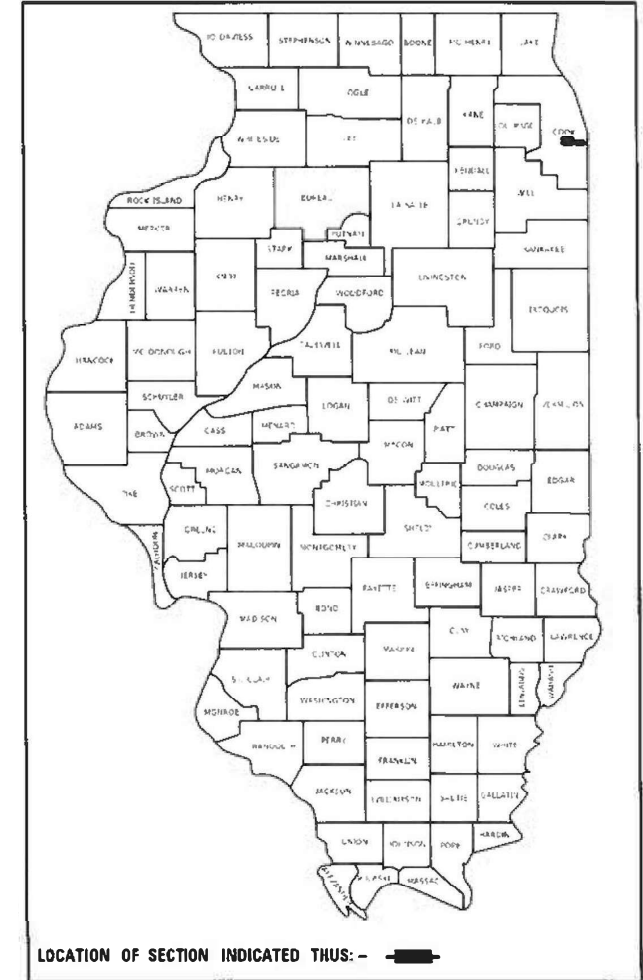


STATE OF ILLINOIS
DEPARTMENT OF TRANSPORTATION

F.A. RTE.	SECTION	COUNTY	TOTAL SHEETS	SHEET NO.
VAR.	2020-247-BP	COOK	15	1
		ILLINOIS	CONTRACT NO. 62N17	

D-91-054-21



LOCATION OF SECTION INDICATED THUS: - [black rectangle]

**PROPOSED
HIGHWAY PLANS**

VARIOUS ROUTE
VARIOUS LOCATIONS
SECTION 2020-247-BP
BRIDGE PAINTING
COOK COUNTY

C-91-054-21

FOR INDEX OF SHEETS, SEE SHEET NO. 2

TRAFFIC DATA

IL 64 (NORTH AVENUE)

2019 ADT = 49,000

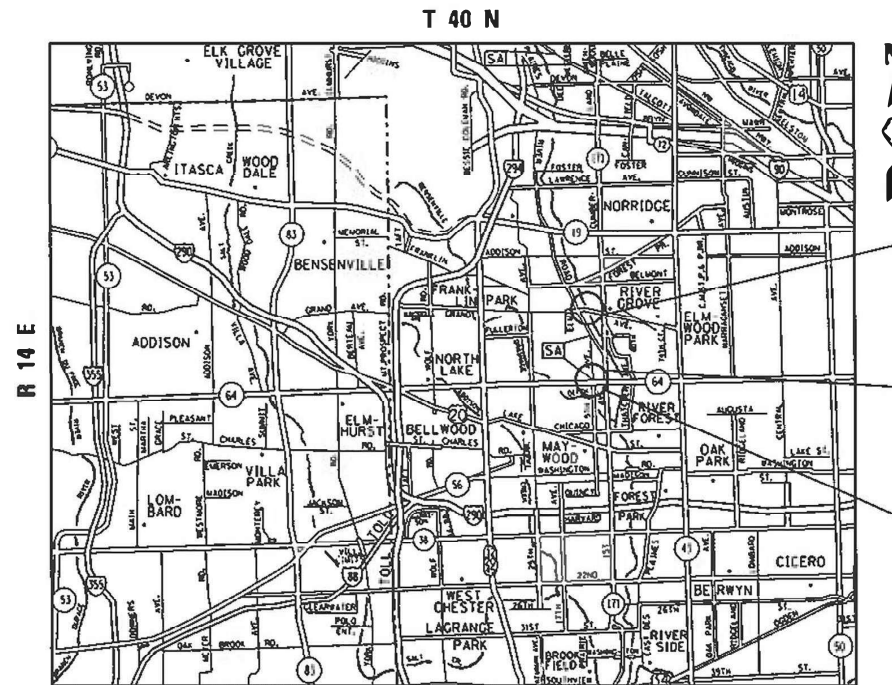
POSTED SPEED LIMIT = 40 MPH

GRAND AVENUE

2018 ADT = 21,700

POSTED SPEED LIMIT = 30 MPH

IMPROVEMENT ARE LOCATED IN
THE VILLAGE OF RIVER GROVE



ALSIP PARK DISTRICT & LEYDEN TOWNSHIP

IMPROVEMENT LOCATION 1:
GRAND AVENUE OVER
DES PLAINES RIVER,
VILLAGE OF RIVER GROVE
SN: 016-0855

IMPROVEMENT LOCATION 2:
IL 64 (NORTH AVENUE) AT
CN-RR WEST
VILLAGE OF RIVER GROVE
SN: 016-0500

IMPROVEMENT LOCATION 3:
IL 64 (NORTH AVENUE) AT
CN-RR EAST
VILLAGE OF RIVER GROVE
SN: 016-1126

J.U.L.I.E.
JOINT UTILITY LOCATION INFORMATION FOR EXCAVATORS
1-800-892-0123
OR 811

PROJECT MANAGER: J. ALIAN MIDY (847) 221-3056

CONTRACT NO. 62N17

STATE OF ILLINOIS
DEPARTMENT OF TRANSPORTATION

SUBMITTED December 16, 2020
Anthony J. Quigley / C.E.S.
REGIONAL ENGINEER

May 7, 2021
Scott A. Elk
ENGINEER OF DESIGN AND ENVIRONMENT

May 7, 2021
James M. Gurn
DIRECTOR OF HIGHWAYS PROJECT IMPLEMENTATION

PRINTED BY THE AUTHORITY
OF THE STATE OF ILLINOIS

INDEX OF SHEETS

1. TITLE SHEET
2. INDEX OF SHEETS AND GENERAL NOTES
3. SUMMARY OF QUANTITIES
- 4-6. LOCATION 1 (SN 016-0855)
- 7-12. LOCATION 2) (SN 016-0500) & 3) (SN 016-1126)
13. TRAFFIC CONTROL AND PROTECTION FOR SIDE ROADS, INTERSECTIONS, AND DRIVEWAYS (TC-10)
14. TRAFFIC CONTROL AND PROTECTION AT TURN BAYS (TO REMAIN OPEN TO TRAFFIC) (TC-14)
15. ARTERIAL ROAD INFORMATION SIGN (TC-22)

STATE HIGHWAY STANDARDS

STD NO.	DESCRIPTION
701101-05	OFF-ROAD OPERATIONS, MULTILANE, 15'-24" FROM PAVEMENT EDGE
701601-09	URBAN LANE CLOSURE, MULTILANE, 1W OR 2W WITH NONTRAVERSABLE MEDIAN
701606-10	URBAN SINGLE LANE CLOSURE, MULTILANE, 2W WITH MOUNTABLE MEDIAN
701701-10	URBAN LANE CLOSURE, MULTILANE INTERSECTION
701801-06	SIDEWALK, CORNER, OR CROSSWALK CLOSURE
701901-08	TRAFFIC CONTROL DEVICES

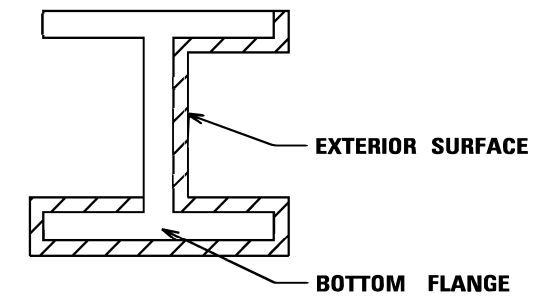
GENERAL NOTES

1. BEFORE STARTING ANY EXCAVATION, THE CONTRACTOR SHALL CALL "J.U.L.I.E." (800) 892-0123 OR 811 FOR FIELD LOCATIONS OF BURIED ELECTRIC, TELEPHONE AND GAS UTILITIES. (48 HOUR NOTIFICATION IS REQUIRED).
2. THE CONTRACTOR SHALL COORDINATE CONSTRUCTION ACTIVITIES WITH UTILITY COMPANIES, AND THE VILLAGE OF RIVER GROVE
3. IT SHALL BE THE CONTRACTOR'S RESPONSIBILITY TO PROTECT AND PRESERVE THE EXISTING BRIDGE LIGHTING AT ANY LOCATIONS THAT LIGHTING IS ENCOUNTERED ADJACENT TO AN AREA TO BE CLEANED AND PAINTED.
4. IT SHALL BE THE CONTRACTOR'S RESPONSIBILITY TO VERIFY ALL THE DIMENSIONS & CONDITIONS EXISTING IN THE FIELD PRIOR TO CONSTRUCTION & ORDERING OF MATERIALS.
5. THE CONTRACTOR WILL NOT BE ALLOWED TO SET UP A YARD OR FIELD OFFICE ON STATE PROPERTY WITHOUT WRITTEN PERMISSION FROM THE DEPARTMENT.
6. THESE PLANS HAVE BEEN PREPARED FROM NOTES RECEIVED FROM THE BUREAU OF MAINTENANCE BRIDGE INSPECTORS.
7. THE CONTRACTOR SHALL CONTACT THE DISTRICT ONE TRAFFIC CONTROL SUPERVISOR AT KALPANA.KANNAN-HOSADURGA@ILLINOIS.GOV FOR ARTERIALS A MINIMUM OF 72 HOURS IN ADVANCE OF BEGINNING WORK.
8. THE CONTRACTOR SHALL BE REQUIRED TO PROVIDE ACCESS TO ABUTTING PROPERTY AT ALL TIMES DURING THE CONSTRUCTION OF THIS PROJECT.
9. PLAN DIMENSIONS AND DETAILS RELATIVE TO EXISTING PLANS ARE SUBJECT TO NOMINAL CONSTRUCTION VARIATIONS. THE CONTRACTOR SHALL FIELD VERIFY EXISTING DIMENSIONS AND DETAILS AFFECTING NEW CONSTRUCTION AND MAKE NECESSARY APPROVED ADJUSTMENTS PRIOR TO CONSTRUCTION OR ORDERING OF MATERIALS. SUCH VARIATIONS SHALL NOT BE CAUSED FOR ADDITIONAL COMPENSATION FOR A CHANGE IN SCOPE OF THE WORK. HOWEVER, THE CONTRACTOR WILL BE PAID FOR THE QUANTITY ACTUALLY FURNISHED BASED AT THE UNIT PRICE BID FOR THE WORK.
10. DO NOT SCALE PLANS FOR CONSTRUCTION DIMENSIONS.
11. THE CONTRACTOR SHALL TAKE NECESSARY PRECAUTIONS TO INSURE THAT NO DEBRIS WILL ENDANGER OR INTERFERE WITH TRAFFIC ON THE ROADWAY BENEATH THE BRIDGE ACCORDING TO ARTICLE 107.09 OF THE STANDARD SPECIFICATIONS. THIS WORK WILL NOT BE PAID FOR SEPARATELY, BUT SHALL BE INCLUDED IN THE CONTRACT UNIT PRICE FOR THE APPROPRIATE PAY ITEM INVOLVED AND NO ADDITIONAL COMPENSATION WILL BE ALLOWED.
12. THE CONTRACTOR SHALL OBTAIN COAST GUARD APPROVAL FOR ANY WORK THAT MAY INTERFERE WITH NAVIGATIONAL OPERATIONS OF THE NAVIGABLE WATERS. A WORK PLAN SHALL BE PREPARED BY THE CONTRACTOR, REVIEWED AND APPROVED BY THE ENGINEER, AND SUBMITTED BY THE ENGINEER TO THE COAST GUARD AT THE ADDRESS LISTED BELOW FOR APPROVAL.

BRIDGE ADMINISTRATOR
 US COAST GUARD
 NINTH COAST GUARD DISTRICT
 1240 E. NINTH ST
 CLEVELAND, OH 44199-2060
 SCOTT STRIFFLER (216) 902-6087

GENERAL PAINT NOTES

1. CLEANING AND PAINTING OF THE EXISTING STRUCTURAL STEEL SHALL BE AS SPECIFIED IN THE SPECIAL PROVISION FOR "CLEANING AND PAINTING EXISTING STEEL STRUCTURES".
2. LOCATION 2 - (SN 016-0500), LOCATION 3 (SN 016-1126)
 ALL BEAMS, BEARING AND OTHER STRUCTURAL STEEL SHALL BE CLEANED PER NEAR WHITE BLAS CLEANING SSPC-SP10. THE AREAS DESIGNATED SHALL BE PAINTED ACCORDING TO THE REQUIREMENTS OF PAINT SYSTEM 1 -OZ/E/U. THE COLOR OF THE FINAL FINISH COAT FOR ALL INTERIOR STEEL SURFACES SHALL BE GRAY, MUNSELL NO 5B 7/1. THE COLOR OF THE FINAL FINISH COAT FOR EXTERIOR AND BOTTOM FLANGE OF THE FASCIA BEAMS SHALL BE REDDISH BROWN, MUNSELL NO. 2.5YR 3/4. LOCATION 2 (SN 016-0500) AND LOCATION 3 (SN 016-1126) TO HAVE COMPLETE PAINT REMOVAL AND REPLACEMENT.
3. TWO (2) AIR MONITORS FOR LOCATION 1 AND ONE (1) AT LOCATIONS 2 AND 3 WILL BE REQUIRED TO MONITOR ABRASIVE BLASTING OPERATIONS. SEE SPECIAL PROVISIONS FOR "CONTAINMENT AND DISPOSAL OF LEAD PAINT CLEANING RESIDUES".
4. ALL ITEMS (SUCH AS, BUT NOT LIMITED TO: CONDUITS, BRACKETS AND DECK DRAINS) ATTACHED TO OUTSIDE OF THE FASCIA BEAMS SHOULD BE CLEANED AND PAINTED.
5. LOCATION 1 (SN 016-0855):(2 DECK OPENINGS)
 ALL BEAMS, BEARINGS AND OTHER STRUCTURAL STEEL WITHIN 5 FEET (MEASURED ALONG THE BEAM) OF EITHER SIDE OF ALL DECK JOINTS, SHALL BE CLEANED PER NEAR WHITE BLAST CLEANING SSPC-SP10. THE EXTERIOR SURFACES AND TOP AND BOTTOM OF THE BOTTOM FLANGE OF THE FASCIA BEAMS OUTSIDE THE DECK JOINTS FOR THE LENGTH OF THE BRIDGE (SEE FIGURE 1)SHALL BE CLEANED PER NEAR WHITE BLAST CLEANING SSPC-SP10.



FASCIA BEAM PAINTING DETAIL
FIGURE 1

 **SURFACE TO BE CLEANED AND PAINTED**

MODEL: Default
 FILE: Make: p:\g\l\m\room.dat\illinois.gov\HWIDOT\Documents\DOT Offices\District: 1\Project\ID:05421\CaddData\Design\01:05421-shc-cover.dgn

USER NAME = somool	DESIGNED -	REVISED -
	DRAWN -	REVISED -
PLOT SCALE = 100.0000 ' / in.	CHECKED -	REVISED -
PLOT DATE = 12/16/2020	DATE -	REVISED -

STATE OF ILLINOIS
DEPARTMENT OF TRANSPORTATION

SCALE: SHEET OF SHEETS STA. TO STA.

F.A. RTE.	SECTION	COUNTY	TOTAL SHEETS	SHEET NO.
VAR.	2020-247-BP	COOK	15	2
			CONTRACT NO. 62N17	
ILLINOIS FED. AID PROJECT				

SUMMARY OF QUANTITIES			URBAN TOTAL QUANTITIES 100% STATE	CONSTRUCTION TYPE CODE					
CODE NO	ITEM	UNIT		0047 0013 BRIDGE 1 016-0855	0047 0013 BRIDGE 2 016-0500	0047 0013 BRIDGE 3 016-1126			
67000400	ENGINEER'S FIELD OFFICE, TYPE A	CAL MO	6	2	2	2			
67100100	MOBILIZATION	L SUM	1	0.4	0.3	0.3			
70102625	TRAFFIC CONTROL AND PROTECTION, STANDARD 701606	L SUM	1	1					
70102630	TRAFFIC CONTROL AND PROTECTION, STANDARD 701601	L SUM	1		0.5	0.5			
70102635	TRAFFIC CONTROL AND PROTECTION, STANDARD 701701	L SUM	1	0.4	0.3	0.3			
70102640	TRAFFIC CONTROL AND PROTECTION, STANDARD 701801	L SUM	1	0.4	0.3	0.3			
70200100	NIGHTTIME WORK ZONE LIGHTING	L SUM	1		0.5	0.5			
Z0007101	CONTAINMENT AND DISPOSAL OF LEAD PAINT CLEANING RESIDUES NO. 1	L SUM	1	1					
Z0007102	CONTAINMENT AND DISPOSAL OF LEAD PAINT CLEANING RESIDUES NO. 2	L SUM	1		1				
Z0007103	CONTAINMENT AND DISPOSAL OF LEAD PAINT CLEANING RESIDUES NO. 3	L SUM	1			1			
Z0010501	CLEANING AND PAINTING STEEL BRIDGE NO. 1	L SUM	1	1					

SUMMARY OF QUANTITIES			URBAN TOTAL QUANTITIES 100% STATE	CONSTRUCTION TYPE CODE					
CODE NO	ITEM	UNIT		0047 0013 BRIDGE 1 016-0855	0047 0013 BRIDGE 2 016-0500	0047 0013 BRIDGE 3 016-1126			
Z0010502	CLEANING AND PAINTING STEEL BRIDGE NO. 2	L SUM	1	1					
Z0010503	CLEANING AND PAINTING STEEL BRIDGE NO. 3	L SUM	1			1			
Z0030850	TEMPORARY INFORMATION SIGNING	SO FT	257	102.8	77.1	77.1			
Z0048665	RAILROAD PROTECTIVE LIABILITY INSURANCE	L SUM	1		0.5	0.5			

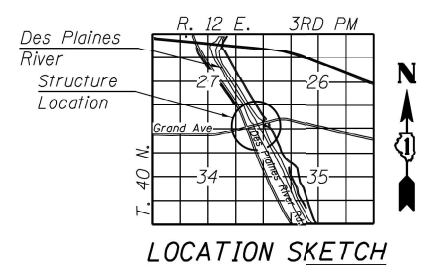
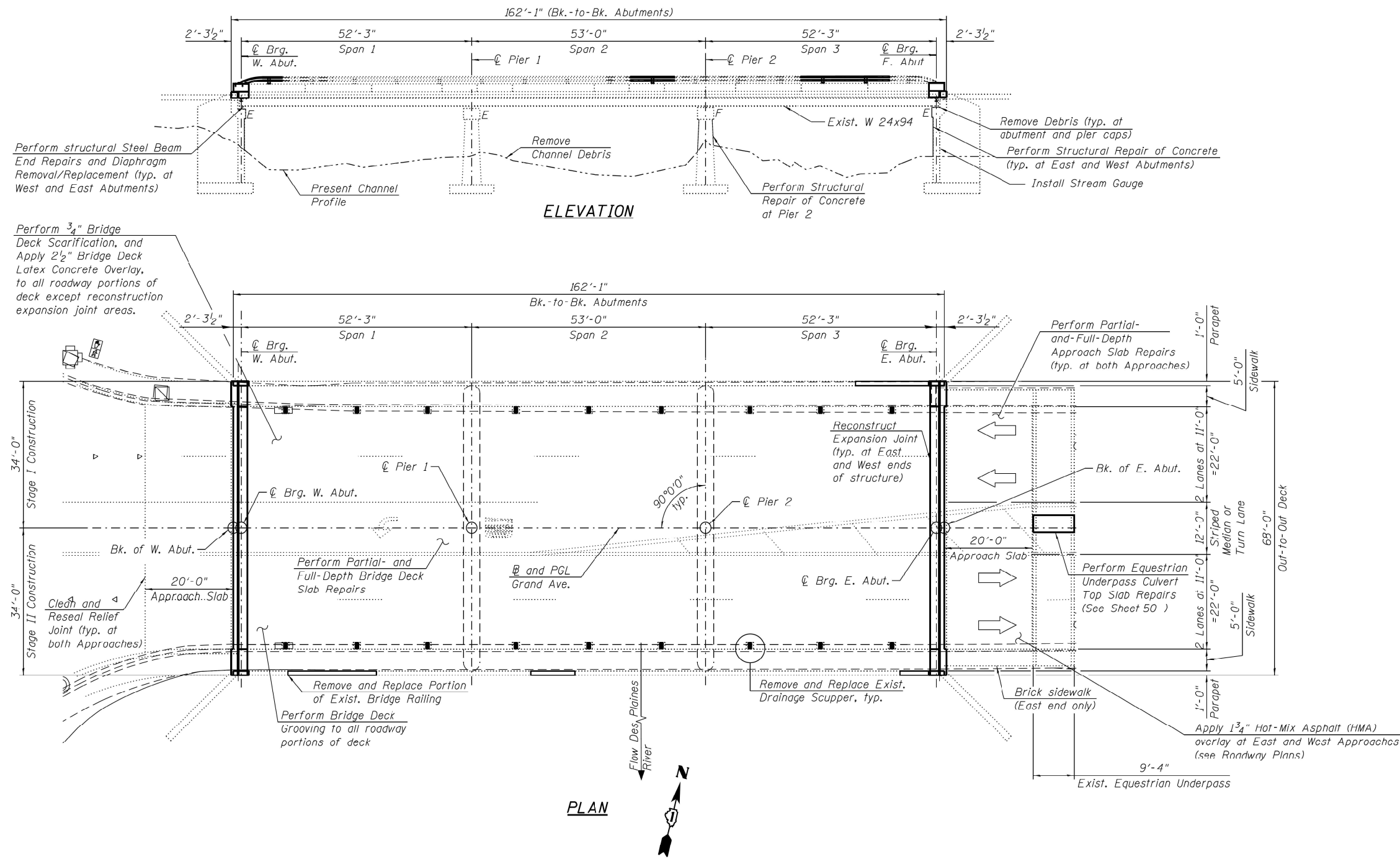
FILE NAME =	USER NAME = somod	DESIGNED -	REVISED -
p:\planroom\dtd\illinois\gov\PN1001\Documents\DOT Offices\District\Projects\DI0542\CAD\Drawings\DI0542\sh		DRAWN -	REVISED -
		CHECKED -	REVISED -
		DATE -	REVISED -

**STATE OF ILLINOIS
DEPARTMENT OF TRANSPORTATION**

SUMMARY OF QUANTITIES			
SCALE:	SHEET NO.	OF SHEETS	STA. TO STA.

F.A. RTE.	SECTION	COUNTY	TOTAL SHEETS	SHEET NO.
VAR.	2020-247-BP	COOK	15	3
			CONTRACT NO. 62N17	
FED. ROAD DIST. NO. 1 ILLINOIS FED. AID PROJECT				

REV-SEP



FOR INFORMATION ONLY

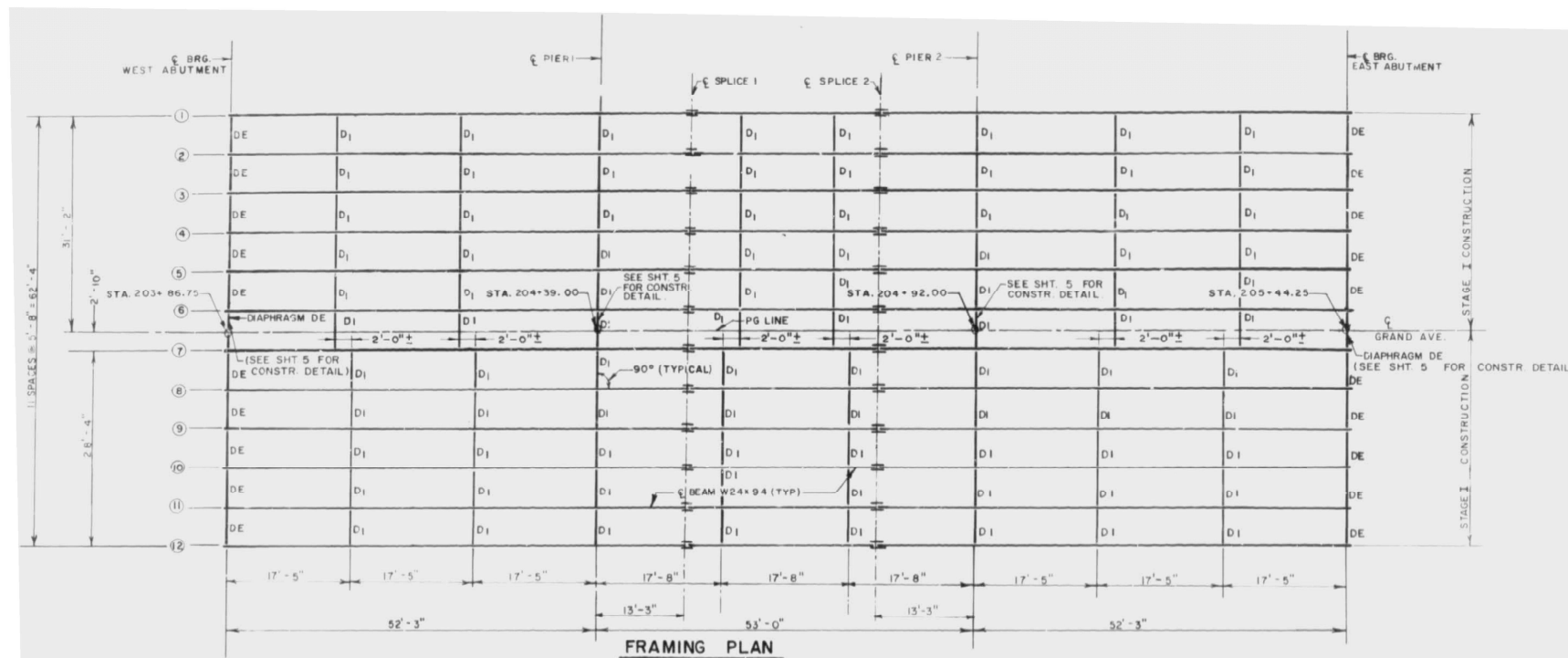
MODEL: Default
 FILE NAME: p:\pub\mroom.dwg
 PROJECT: 105421\CADD\Drawings\DOT Office\Drawings\105421-409819.dwg
 DATE: 12/16/2020

USER NAME = somool	DESIGNED -	REVISED -
	DRAWN -	REVISED -
PLOT SCALE = 100,0000' / in.	CHECKED -	REVISED -
PLOT DATE = 12/16/2020	DATE -	REVISED -

STATE OF ILLINOIS
 DEPARTMENT OF TRANSPORTATION

LOCATION 1) SN 016-0855	
GENERAL PLAN & ELEVATION	
SCALE:	SHEET OF SHEETS STA. TO STA.

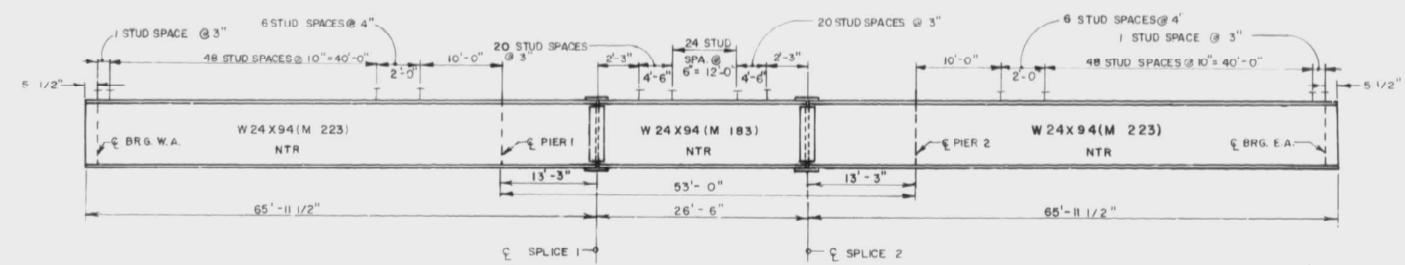
F.A. RTE.	SECTION	COUNTY	TOTAL SHEETS	SHEET NO.
VAR.	2020-247-BP	COOK	15	4
CONTRACT NO. 62N17				
ILLINOIS FED. AID PROJECT				



TOP OF BEAM ELEVATIONS

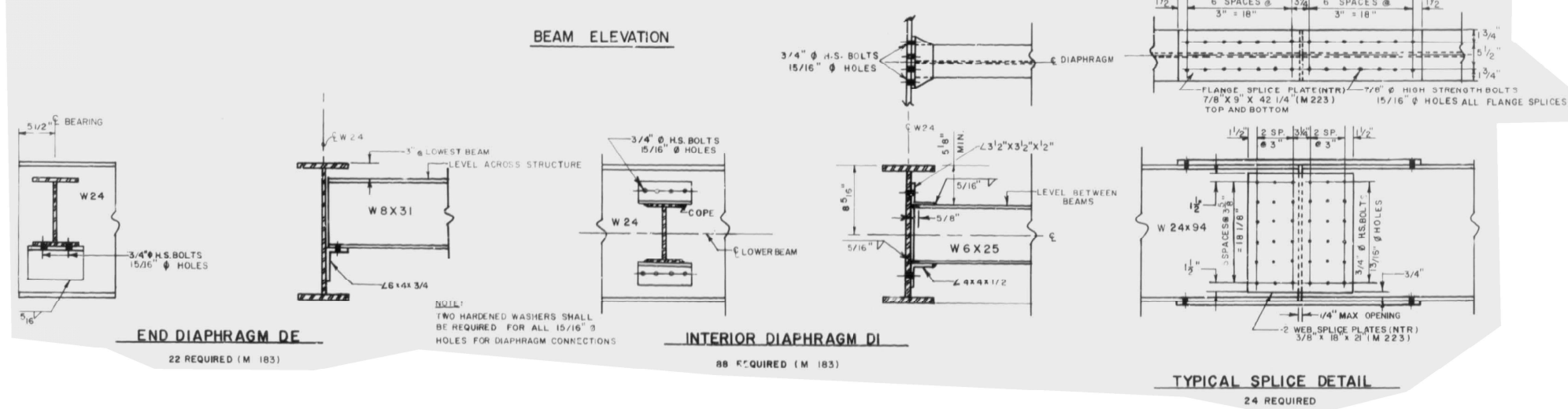
LOC.	¢ BRG. W.A.	¢ PIER 1	¢ SPLICE 1	¢ SPLICE 2	¢ PIER 2	¢ BRG. E.A.
1	623.78	623.85	623.87	623.89	623.90	623.94
2	623.87	623.94	623.96	623.98	623.99	624.03
3	623.96	624.03	624.05	624.07	624.08	624.12
4	624.05	624.12	624.14	624.15	624.16	624.21
5	624.13	624.21	624.23	624.24	624.25	624.30
6	624.22	624.30	624.32	624.33	624.34	624.38
7	624.22	624.30	624.32	624.33	624.34	624.38
8	624.13	624.21	624.23	624.24	624.25	624.30
9	624.05	624.12	624.14	624.15	624.16	624.21
10	623.96	624.03	624.05	624.07	624.08	624.12
11	623.87	623.94	623.96	623.98	623.99	624.03
12	623.78	623.85	623.87	623.89	623.90	623.94

* ELEVATION IS ON TOP OF W 24 X 94 FOR FABRICATION ONLY



INTERIOR BEAM REACTION

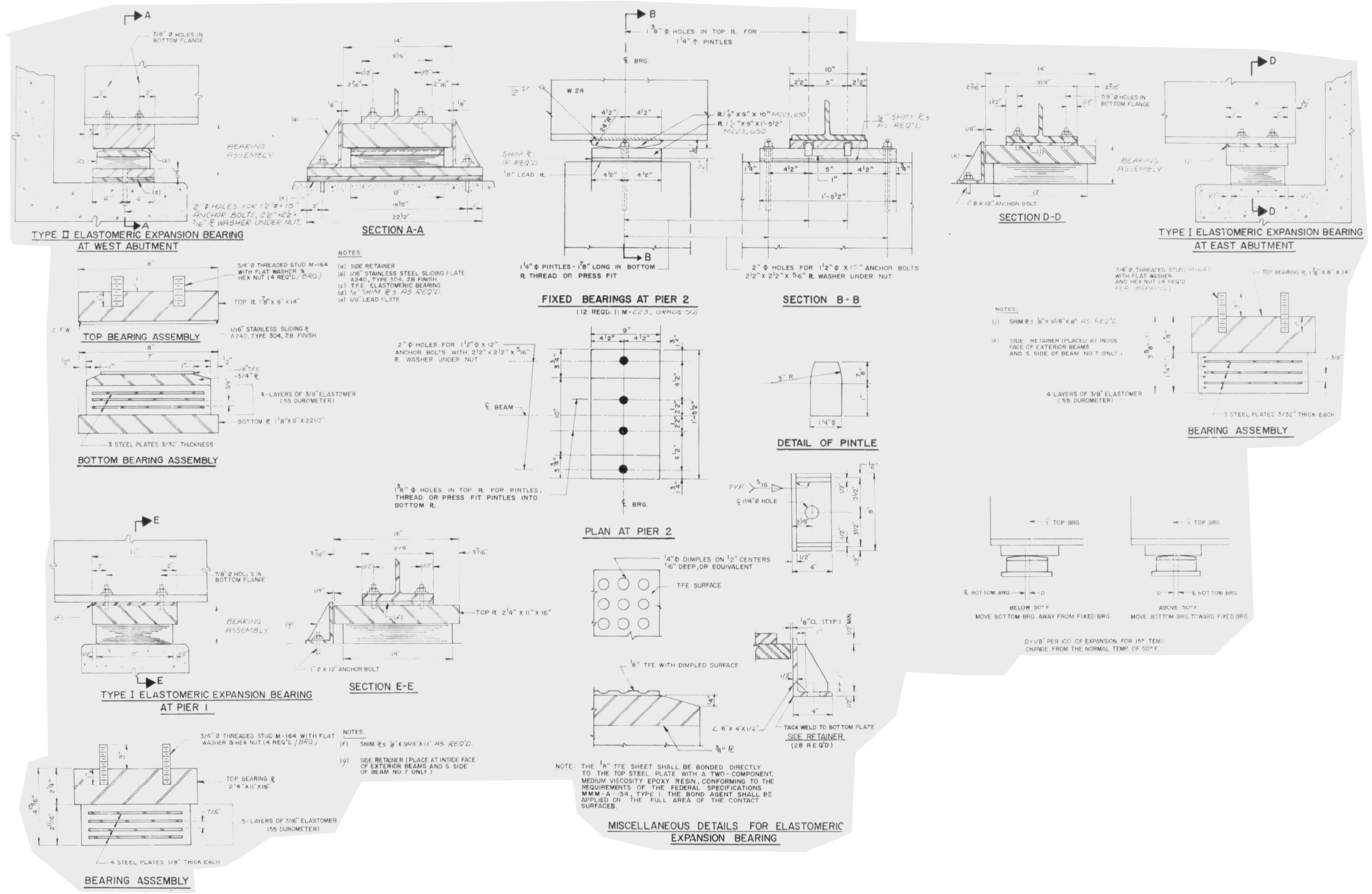
	ABUTMENTS	PIERS
R _g (K)	22.2	60.4
R _h (K)	32.9	37.5
R _{imp} (K)	9.2	10.5
R _{TOTAL} (K)	64.3	108.4



FOR INFORMATION ONLY

MODEL: Default
 FILE NAME: p:\mhammond.dwg
 PROJECT: 2020-247-BP
 PROJECT DATE: 12/16/2020
 PROJECT LOCATION: ILLINOIS
 PROJECT DESCRIPTION: COOK COUNTY
 PROJECT DRAWING: BRIDGE
 PROJECT SHEET: BRIDGE
 PROJECT SCALE: 1/8" = 1'-0"
 PROJECT DATE: 12/16/2020
 PROJECT DRAWN: JLD
 PROJECT CHECKED: JLD
 PROJECT DESIGNED: JLD
 PROJECT REVISIONS:

USER NAME = somool DRAWN - CHECKED - DATE -	DESIGNED - REVISIONS -	REVISIONS - REVISIONS - REVISIONS - REVISIONS -	STATE OF ILLINOIS DEPARTMENT OF TRANSPORTATION	LOCATION 1) SN 016-0855 FRAMING PLAN	F.A. RTE. VAR.	SECTION 2020-247-BP	COUNTY COOK	TOTAL SHEETS 15	SHEET NO. 5
SCALE: SHEET OF SHEETS STA. TO STA.				CONTRACT NO. 62N17 ILLINOIS FED. AID PROJECT					



FOR INFORMATION ONLY

MODEL: Default
 FILE NAME: p:\pub\amroom.dwg
 PROJECT: 2020-247-BP
 OFFICE: 1105421-00000000
 DATE: 12/16/2020

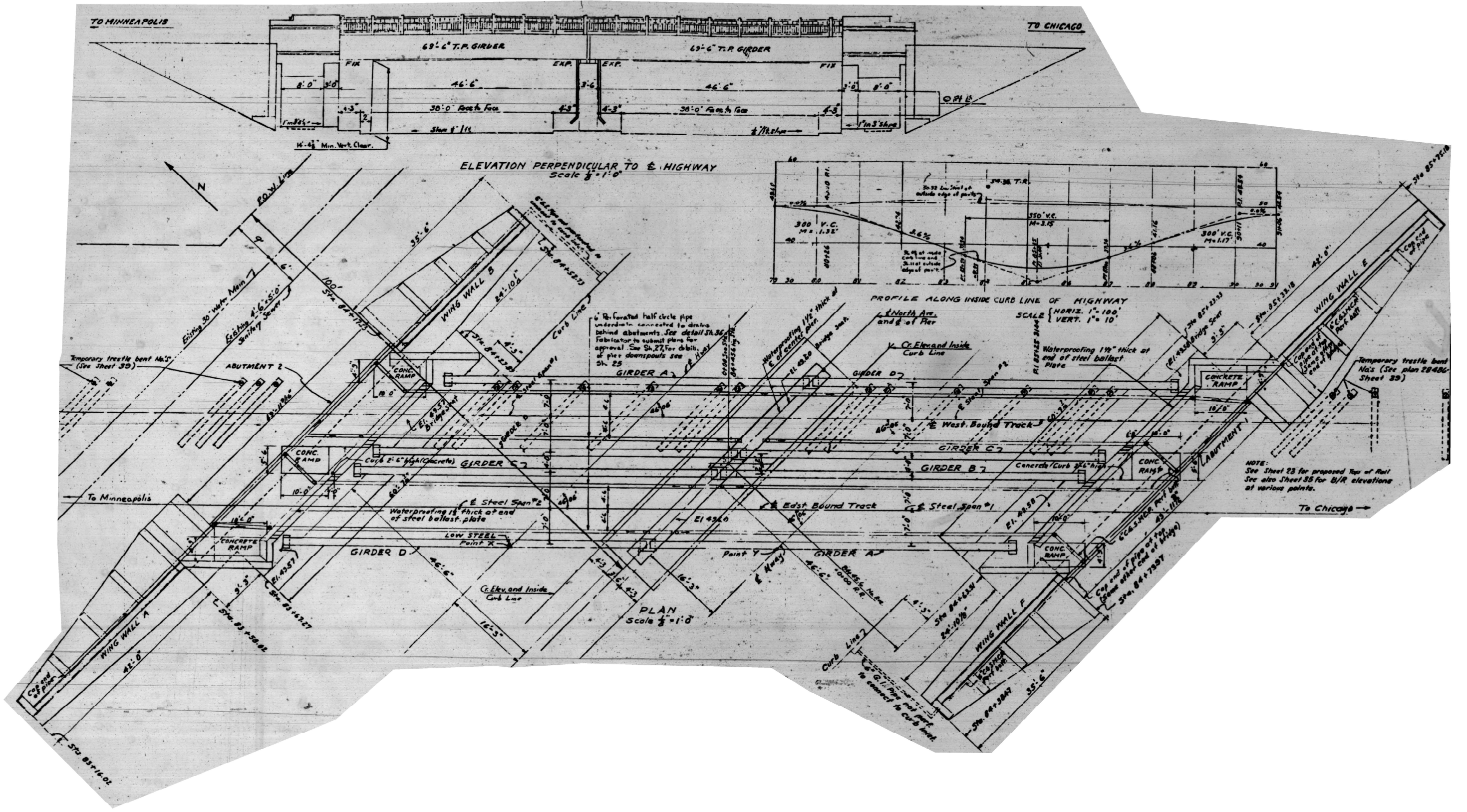
USER NAME = somool	DESIGNED -	REVISED -
DRAWN -	REVISED -	REVISED -
PLOT SCALE = 100,0000' / in.	CHECKED -	REVISED -
PLOT DATE = 12/16/2020	DATE -	REVISED -

STATE OF ILLINOIS
DEPARTMENT OF TRANSPORTATION

LOCATION 1) SN 016-0855
BEARING DETAILS

SCALE:	SHEET	OF	SHEETS	STA.	TO	STA.
--------	-------	----	--------	------	----	------

F.A. RTE.	SECTION	COUNTY	TOTAL SHEETS	SHEET NO.
VAR.	2020-247-BP	COOK	15	6
CONTRACT NO. 62N17			ILLINOIS FED. AID PROJECT	



FOR INFORMATION ONLY

MODEL: Default
 FILE NAME: p:\pub\baronm.dwg
 PROJECT: D:\05421\CADD\Drawings\DOT - Office\Drawings\1\Project\05421\CADD\Drawings\DOT - Office\Drawings\1\Project\05421-Corridor.dwg
 PLOT SCALE = 100,0000' / in.
 PLOT DATE = 12/16/2020

USER NAME = somool	DESIGNED -	REVISED -
	DRAWN -	REVISED -
	CHECKED -	REVISED -
	DATE -	REVISED -

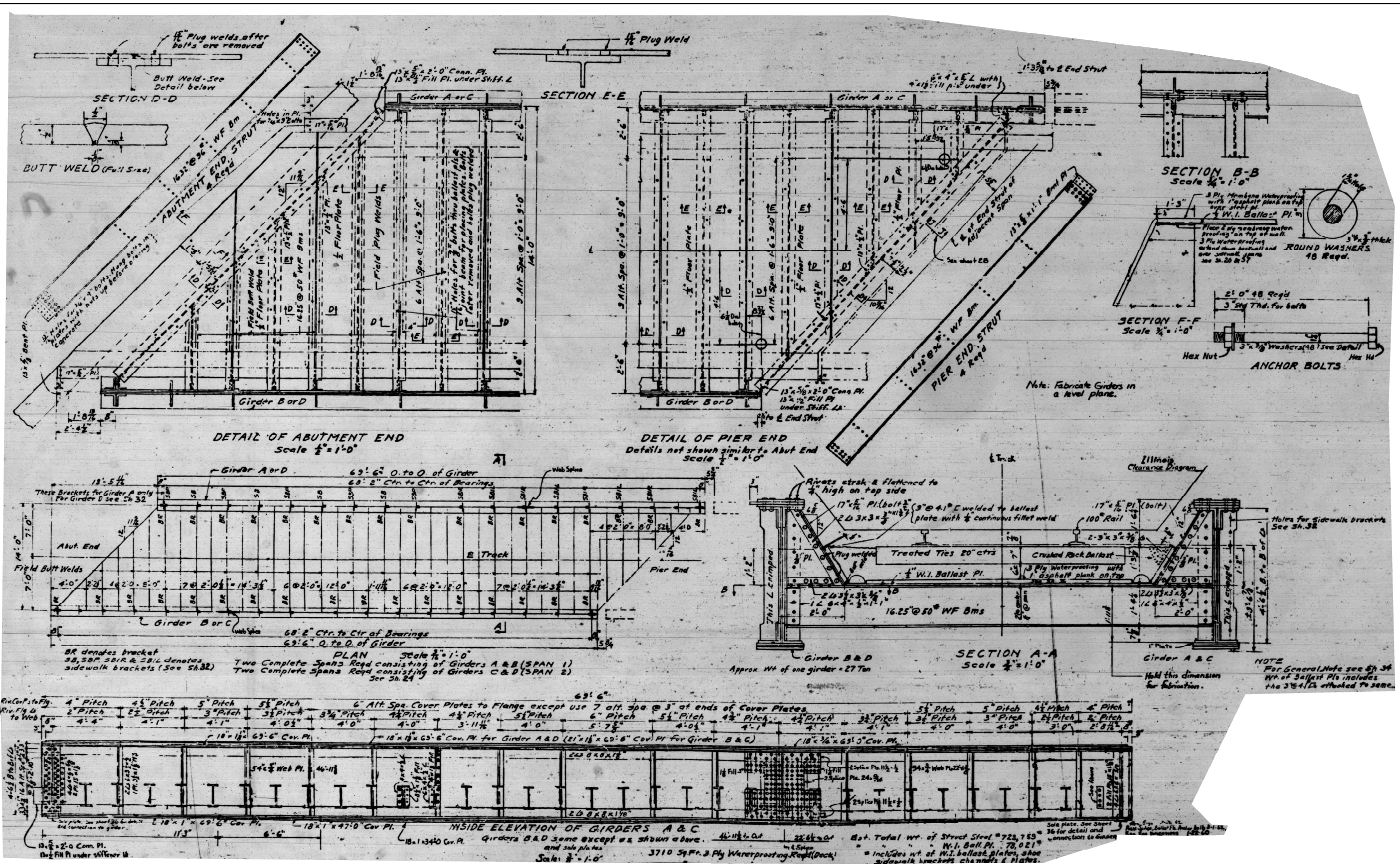
STATE OF ILLINOIS
DEPARTMENT OF TRANSPORTATION

LOCATION 2) SN 016-0500 & LOCATION 3) SN 016-1126
GENERAL PLAN & ELEVATION

SCALE:	SHEET	OF	SHEETS	STA.	TO	STA.
--------	-------	----	--------	------	----	------

F.A. RTE.	SECTION	COUNTY	TOTAL SHEETS	SHEET NO.
VAR.	2020-247-BP	COOK	15	7
ILLINOIS			FED. AID PROJECT	

CONTRACT NO. 62N17



FOR INFORMATION ONLY

MODEL: Default
 FILE NAME: p:\work\2020\2020-247-00\2020-247-00-01\2020-247-00-01.dwg
 PROJECT: 2020-247-00
 OFFICE: Springfield
 DATE: 12/16/2020

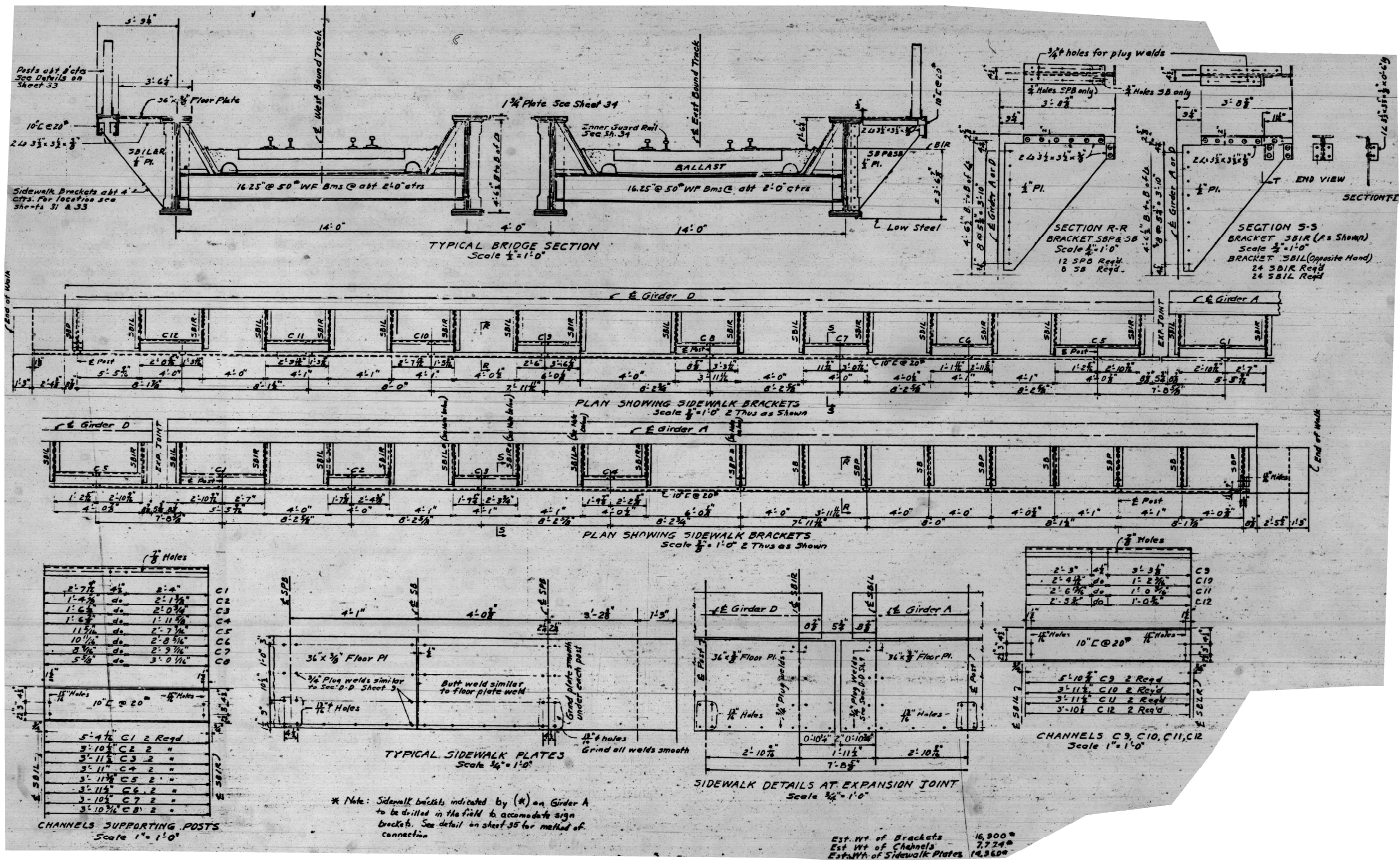
USER NAME = somool	DESIGNED -	REVISED -
	DRAWN -	REVISED -
PLOT SCALE = 100,0000' / in.	CHECKED -	REVISED -
PLOT DATE = 12/16/2020	DATE -	REVISED -

STATE OF ILLINOIS
DEPARTMENT OF TRANSPORTATION

LOCATION 2) SN 016-0500 & LOCATION 3) SN 016-1126
STEEL GIRDERS DETAILS

SCALE: SHEET OF SHEETS STA. TO STA.

F.A. RTE.	SECTION	COUNTY	TOTAL SHEETS	SHEET NO.
VAR.	2020-247-BP	COOK	15	8
CONTRACT NO. 62N17			ILLINOIS FED. AID PROJECT	



FOR INFORMATION ONLY

MODEL: Default
FILE NAME: p:\workroom\dot\illinois\pwr\PROJECTS\DOT\Documents\DOT - Office\Drawings - 1\Project\DOT\US421\CADD\Drawings\Design\01\05421-4-cs-sbr-01.dwg

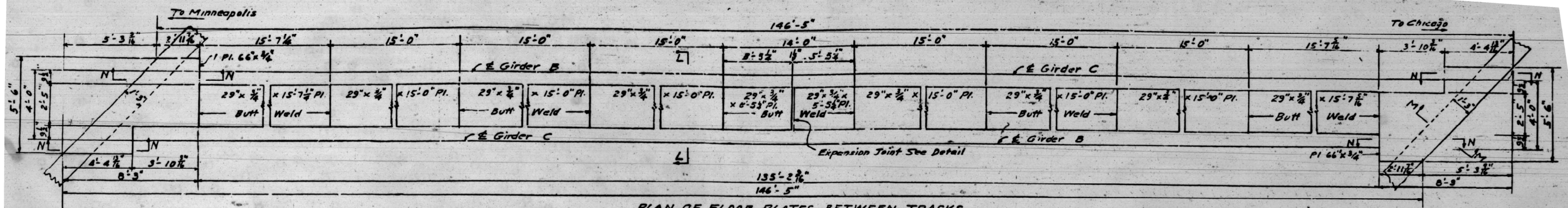
USER NAME = somool	DESIGNED -	REVISED -
	DRAWN -	REVISED -
PLOT SCALE = 100,0000' / in.	CHECKED -	REVISED -
PLOT DATE = 12/16/2020	DATE -	REVISED -

STATE OF ILLINOIS
DEPARTMENT OF TRANSPORTATION

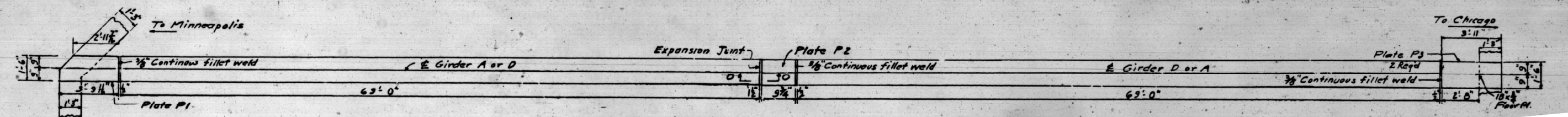
LOCATION 2) SN 016-0500 & LOCATION 3) SN 016-1126
SIDEWALK DETAILS

SCALE: SHEET OF SHEETS STA. TO STA.

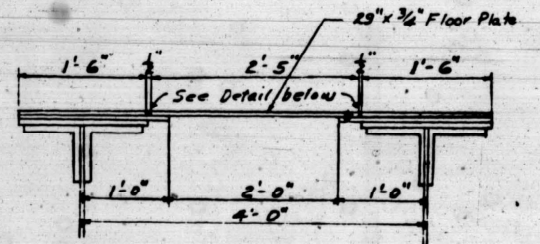
F.A. RTE.	SECTION	COUNTY	TOTAL SHEETS	SHEET NO.
VAR.	2020-247-BP	COOK	15	9
		CONTRACT NO. 62N17		
		ILLINOIS FED. AID PROJECT		



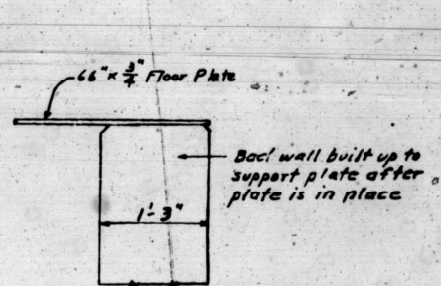
PLAN OF FLOOR PLATES BETWEEN TRACKS
Scale $\frac{1}{8}" = 1'-0"$



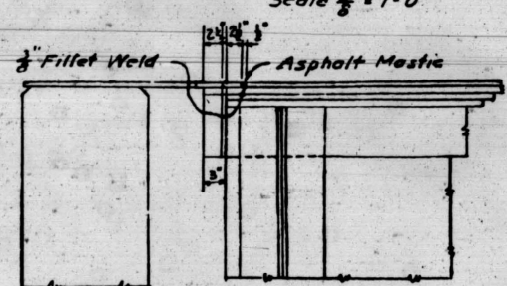
PLAN OF FLOOR PLATES AT ENDS OF GIRDER A & D
Scale $\frac{1}{8}" = 1'-0"$



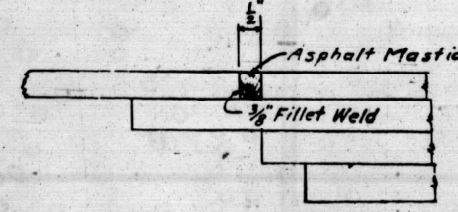
SECTION L-L
Scale $1" = 1'-0"$



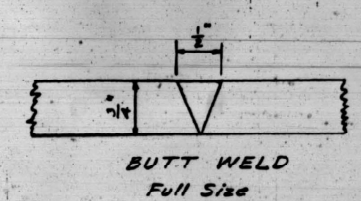
SECTION M-M
Scale $1" = 1'-0"$



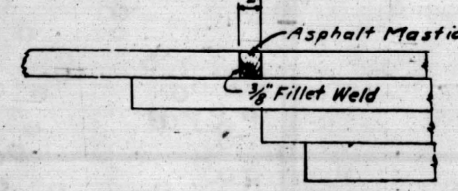
SECTION N-N
Scale $1" = 1'-0"$



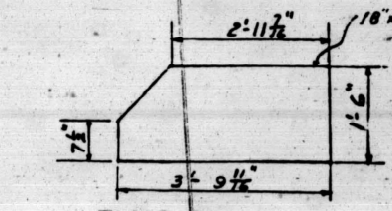
FILLET WELD
Half Size



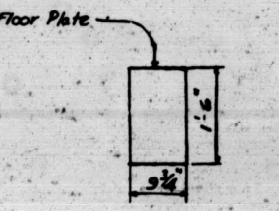
BUTT WELD
Full Size



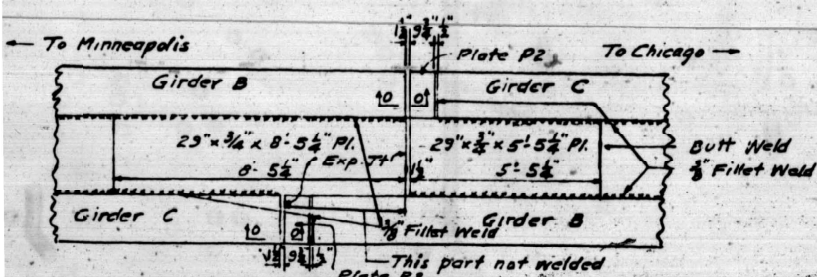
SECTION O-O
Half Size



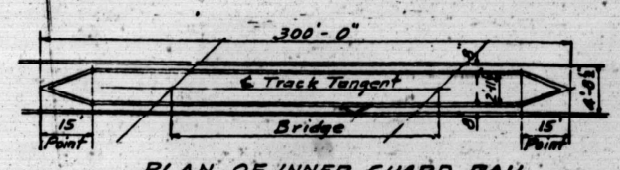
FLOOR PLATE P1
2 Reqd



FLOOR PLATE P2
4 Reqd



EXPANSION JOINT
Scale $\frac{1}{8}" = 1'-0"$



PLAN OF INNER GUARD RAIL
Same for both tracks

Inner Guard Rail of S.M. 85° Rail pointed at ends with standard guard rail points (300'-0" to 0 as per sketch). Each rail spiked at every tie with 2-3/8" x 5 1/2" track spikes. Rails fastened together with 4 bolt angle bars, half bolted (one bolt at each end of angle bar) with bolt heads toward running rail. See See Plan 13341 & 20026 for further details.
Inner Guard Rail to be furnished & placed by R.R. Co.

FOR INFORMATION ONLY

MODEL: Default; FILE NAME: p:\m\baron\0001\illinois\dot\Doc\meets\DOT - Office\Drawings - 1\Project\ID:05421\CADD\Drawings\Design\01:05421-ExpRail.dwg

USER NAME = somdol	DESIGNED -	REVISED -
PLOT SCALE = 100,0000' / in.	DRAWN -	REVISED -
PLOT DATE = 12/16/2020	CHECKED -	REVISED -
	DATE -	REVISED -

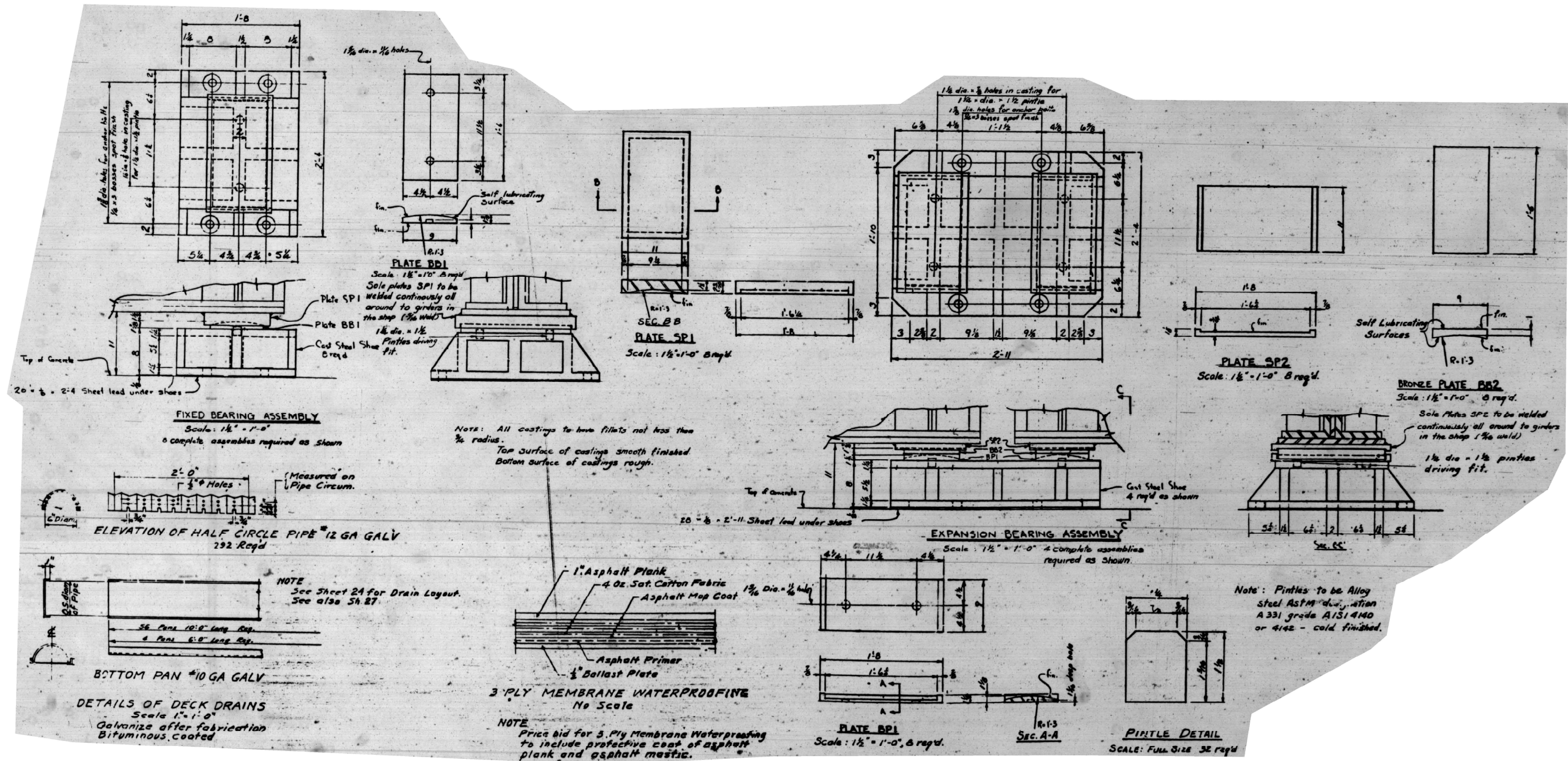
STATE OF ILLINOIS
DEPARTMENT OF TRANSPORTATION

LOCATION 2) SN 016-0500 & LOCATION 3) SN 016-1126
FLOOR PLATES DETAILS

SCALE:	SHEET	OF	SHEETS	STA.	TO	STA.
--------	-------	----	--------	------	----	------

F.A. RTE.	SECTION	COUNTY	TOTAL SHEETS	SHEET NO.
	2020-247-BP	COOK	15	10
				CONTRACT NO. 62N17
		ILLINOIS	FED. AID PROJECT	

MODEL: Default
 FILE NAME: p:\m\baronm\dot\illinois\dot\Office\Drawings\DOT Documents\BID01-Office\Drawings\DOT\105421-C62-17-10-2020.dwg



FOR INFORMATION ONLY

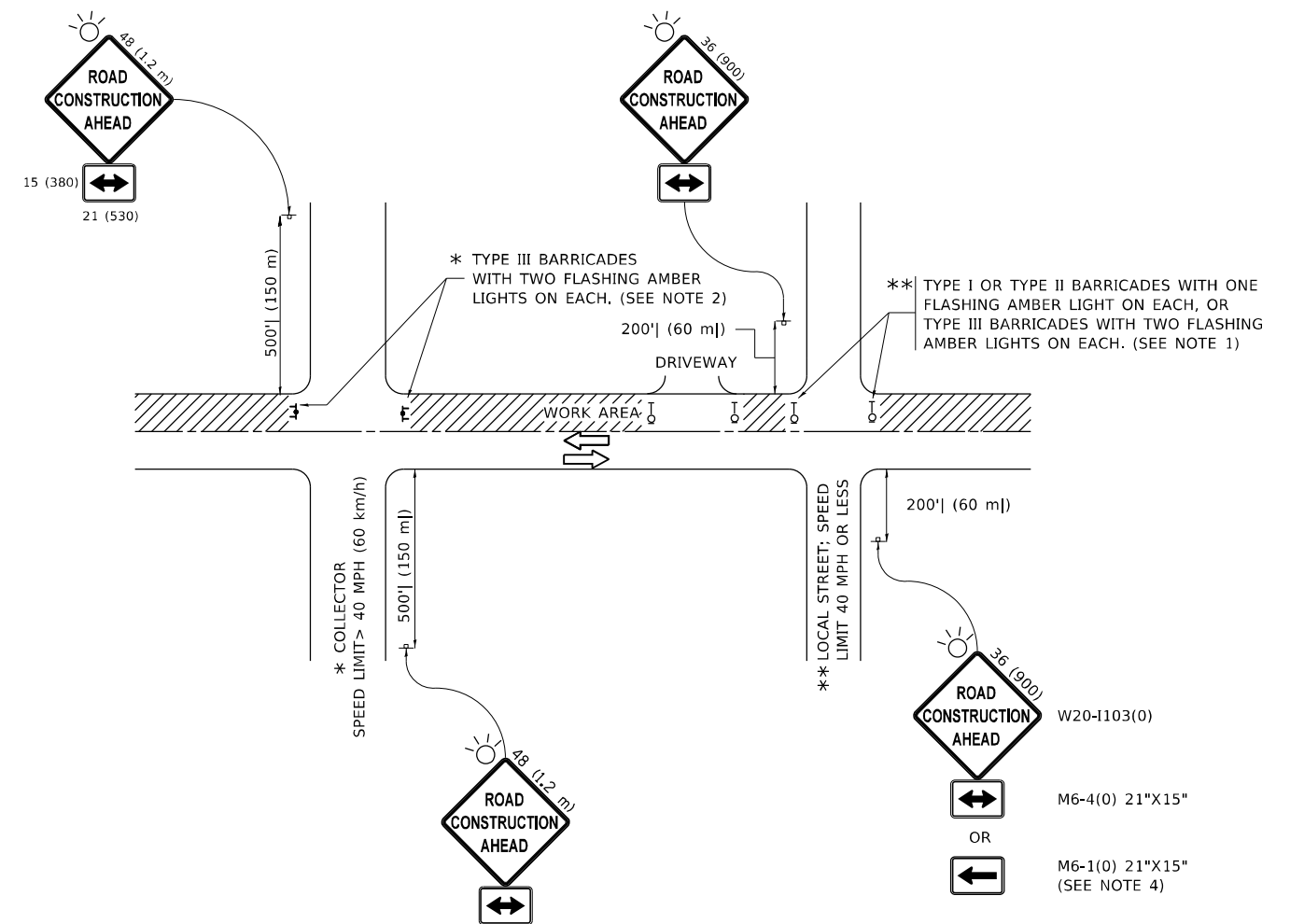
USER NAME = som001	DESIGNED -	REVISED -
	DRAWN -	REVISED -
PLOT SCALE = 100,0000' / in.	CHECKED -	REVISED -
PLOT DATE = 12/16/2020	DATE -	REVISED -

STATE OF ILLINOIS
 DEPARTMENT OF TRANSPORTATION

LOCATION 2) SN 016-0500 & LOCATION 3) SN 016-1126
 BEARING DETAILS

SCALE: SHEET OF SHEETS STA. TO STA.

F.A. RTE.	SECTION	COUNTY	TOTAL SHEETS	SHEET NO.
VAR.	2020-247-BP	COOK	15	11
CONTRACT NO. 62N17				
ILLINOIS		FED. AID PROJECT		



NOTES:

1. SIDE ROAD WITH A SPEED LIMIT OF 40 MPH (60 km/h) OR LESS AS SHOWN ON THE DRAWING AND AS DIRECTED BY THE ENGINEER:
 - a) ONE "ROAD CONSTRUCTION AHEAD" SIGN 36 x 36 (900x900) WITH A FLASHER MOUNTED ON IT APPROXIMATELY 200' (60 m) IN ADVANCE OF THE MAIN ROUTE.
 - b) THE CLOSED PORTION OF THE MAIN ROUTE SHALL BE PROTECTED BY BLOCKING WITH TYPE I, TYPE II OR TYPE III BARRICADES, 1/3 OF THE CROSS SECTION OF THE CLOSED PORTION.
2. SIDE ROAD WITH A SPEED LIMIT GREATER THAN 40 MPH (60 km/h) AS SHOWN ON THE DRAWING AND AS DIRECTED BY THE ENGINEER:
 - a) ONE "ROAD CONSTRUCTION AHEAD" SIGN 48 x 48 (1.2 m x 1.2 m) WITH A FLASHER MOUNTED ON IT APPROXIMATELY 500' (150 m) IN ADVANCE OF THE MAIN ROUTE.
 - b) BLOCKING WITH TYPE III BARRICADES, 1/2 OF THE CROSS SECTION OF THE CLOSED PORTION.
3. CONES MAY BE SUBSTITUTED FOR BARRICADES OR DRUMS AT HALF THE SPACING DURING DAY OPERATIONS. CONES SHALL BE A MINIMUM OF 28 (710) IN HEIGHT.
4. SIGNING AND THE WORK ZONE, A SINGLE HEADED ARROW (M6-1) SHALL BE USED IN LIEU OF THE DOUBLE HEADED ARROW (M6-4).
5. WHEN WORK IS BEING PERFORMED ON A SIDE ROAD OR DRIVEWAY, FOLLOW THE APPLICABLE STANDARD(S). THE DIRECTIONAL ARROW (M6-1 OR M6-4) SHALL BE COVERED OR REMOVED WHEN NO LONGER CONSISTENT WITH THE TRAFFIC CONTROL SET-UP.
6. ADVANCE WARNING SIGNS ARE TO BE OMITTED ON DRIVEWAYS UNLESS OTHERWISE SPECIFIED IN THE PLANS OR BY THE ENGINEER.
7. THE TRAFFIC CONTROL AND PROTECTION FOR SIDE ROADS, INTERSECTIONS, AND DRIVEWAYS SHALL BE INCLUDED IN THE COST OF SPECIFIED TRAFFIC CONTROL STANDARDS OR ITEMS.

All dimensions are in inches (millimeters) unless otherwise shown.

MODEL: Default
 FILE NAME: p:\m\m\room\dot\illinois\gov\p\w\dot\Documents\DOT_Offices\Distrefc_1\Project\ID\US421\CADD\Drawn\Design\Distrefc.dgn

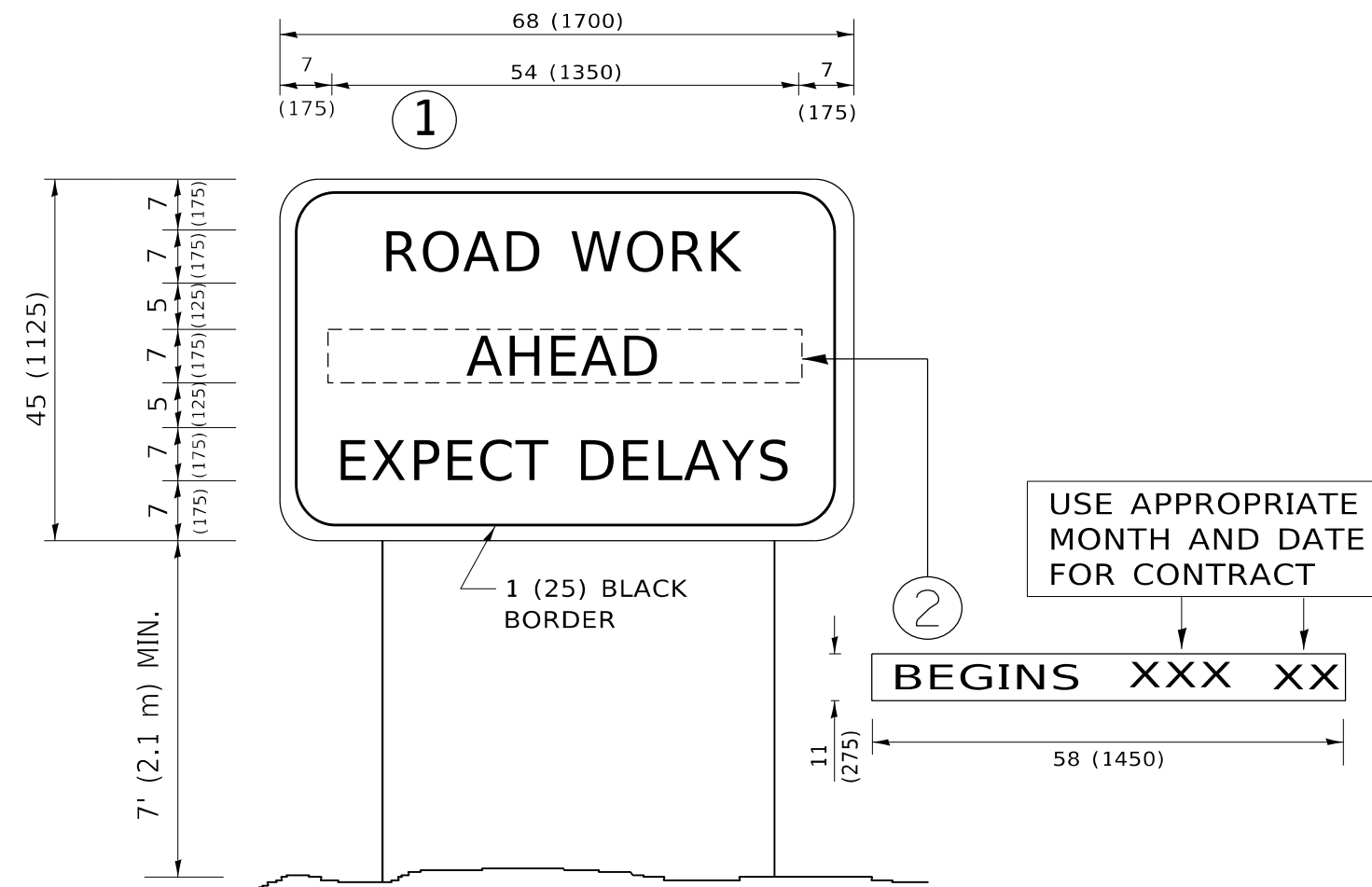
USER NAME = somool	DESIGNED - L.H.A.	REVISED - A. HOUSEH 10-15-96
PLOT SCALE = 100,0000' / in.	CHECKED -	REVISED - T. RAMMACHER 01-06-00
PLOT DATE = 12/16/2020	DATE - 06-89	REVISED - A. SCHUETZE 07-01-13
		REVISED - A. SCHUETZE 09-15-16

**STATE OF ILLINOIS
DEPARTMENT OF TRANSPORTATION**

**TRAFFIC CONTROL AND PROTECTION FOR
SIDE ROADS, INTERSECTIONS, AND DRIVEWAYS**

SCALE: NONE SHEET 1 OF 1 SHEETS STA. TO STA.

F.A. RTE.	SECTION	COUNTY	TOTAL SHEETS	SHEET NO.
VAR.	2020-247-BP	COOK	14	12
TC-10			CONTRACT NO.62N17	
ILLINOIS FED. AID PROJECT				



NOTES:

1. USE BLACK LETTERING ON ORANGE BACKGROUND.
2. ERECT SIGNS IN ADVANCE OF THE LOCATION FOR THE "ROAD CONSTRUCTION AHEAD" SIGN AT LOCATIONS AS DIRECTED BY THE ENGINEER.
3. ERECT SIGN ① WITH INSTALLED PANEL ② ONE WEEK PRIOR TO THE START OF CONSTRUCTION.
4. REMOVE PANEL ② SOON AFTER THE START OF CONSTRUCTION.
5. SEE SPECIAL PROVISION FOR "TEMPORARY INFORMATION SIGNING" FOR ADDITIONAL INFORMATION.
6. ONE SIGN ASSEMBLY EQUALS 25.70 SQ. FT. (2.3 SQ. M.)
7. SHALL BE PAID FOR AS TEMPORARY INFORMATION SIGNING.

ALL DIMENSIONS ARE IN INCHES (MILLIMETERS) UNLESS OTHERWISE SHOWN.

MODEL: Default
 FILE NAME: p:\pub\mroom.dwg
 PROJECT: P:\pub\mroom.dwg
 PROJECT ID: 05421
 C:\DDData\Design\Dis54.dgn

USER NAME = somool	DESIGNED -	REVISED - R. MIRS 09-15-97
	DRAWN -	REVISED - R. MIRS 12-11-97
PLOT SCALE = 100,0000 ' / in.	CHECKED -	REVISED - T. RAMMACHER 02-02-99
PLOT DATE = 12/16/2020	DATE -	REVISED - C. JUCIUS 01-31-07

**STATE OF ILLINOIS
DEPARTMENT OF TRANSPORTATION**

**ARTERIAL ROAD
INFORMATION SIGN**

SCALE: NONE SHEET 1 OF 1 SHEETS STA. TO STA.

F.A. RTE.	SECTION	COUNTY	TOTAL SHEETS	SHEET NO.
VAR.	2020-247-BP	COOK	14	14
TC-22		CONTRACT NO. 62N17		
ILLINOIS FED. AID PROJECT				