

CONSTRUCTION CODE

CODE NO.	ITEM	UNIT	TOTAL QUANTITY	CMAQ/STP FUNDS - 80% FEDERAL, 20% WILL COUNTY			NON-PARTICIPATING ITEMS
				ROADWAY 0004 URBAN	SIGNALIZATION 0021 URBAN	LIGHTING 0021 URBAN	WATERMAIN 0043 URBAN
60224459	MANHOLES, TYPE A, 8' -DIAMETER, TYPE 1 FRAME, CLOSED LID	EACH	4	4			
60235300	ADD INLETS, TYPE A, TYPE 1, CLOSED LID	EACH	12	12			
60236900	INLETS, TYPE A, TYPE 12 FRAME AND GRATE	EACH	3	3			
60237470	INLETS, TYPE A, TYPE 24 FRAME AND GRATE	EACH	26	26			
60240315	INLETS, TYPE B, TYPE 12 FRAME AND GRATE	EACH	2	2			
60240328	INLETS, TYPE B, TYPE 24 FRAME AND GRATE	EACH	9	9			
* 60248900	VALVE VAULTS, TYPE A, 5' DIAMETER, TYPE I FRAME, CLOSED LID	EACH	3				3
60250200	CATCH BASINS TO BE ADJUSTED	EACH	2	2			
60255500	MANHOLES TO BE ADJUSTED	EACH	3	3			
60402640	GRATES, TYPE 24	EACH	34	34			
60500040	REMOVING MANHOLES	EACH	2	2			
60500050	REMOVING CATCH BASINS	EACH	3	3			
60600095	CLASS SI CONCRETE (OUTLET)	CU YD	56	56			
60603800	COMBINATION CONCRETE CURB AND GUTTER, TYPE B-6.12	FOOT	3608	3608			
60605000	COMBINATION CONCRETE CURB AND GUTTER, TYPE B-6.24	FOOT	7915	7915			
60618300	CONCRETE MEDIAN SURFACE, 4"	SQ FT	225	225			
60619600	CONCRETE MEDIAN, TYPE SB-6.12	SQ FT	4816	4816			
* 63000001	STEEL PLATE BEAM GUARDRAIL, TYPE A, 6' POSTS	FOOT	100	100			
* 63000370	LONG-SPAN GUARDRAIL OVER CULVERT, 25-FT SPAN	FOOT	25	25			
* 63100045	TRAFFIC BARRIER TERMINAL, TYPE 2	EACH	1	1			
* 63100167	TRAFFIC BARRIER TERMINAL, TYPE 1 (SPECIAL) TANGENT	EACH	1	1			

\* SPECIALTY ITEM

FILE NAME =	USER NAME = mohammed.o1	DESIGNED JDW	REVISED - $\Delta$ 6/1/21
P:\projects\13003\000\1\CADD_Sheets\481	684-shr-500.dgn	DRAWN JDW	REVISED -
	PLOT SCALE = 2.0000' / in.	CHECKED RCH	REVISED -
\$MODELNAME\$	PLOT DATE = 4/26/2021	DATE 3/31/21	REVISED -

STATE OF ILLINOIS  
DEPARTMENT OF TRANSPORTATION

SUMMARY OF QUANTITIES  
CEDAR ROAD AND LARAWAY ROAD

SCALE: SHEET 5 OF 8 SHEETS STA. TO STA.

F.A.U. RTE.	SECTION	COUNTY	TOTAL SHEETS	SHEET NO.
369	08-00138-28-TL	WILL	156	8
ILLINOIS FED. AID PROJECT			CONTRACT NO. 61B89	

800-3

CONSTRUCTION CODE

CODE NO.	ITEM	UNIT	TOTAL QUANTITY	CMAQ/STP FUNDS - 80% FEDERAL, 20% WILL COUNTY			NON-PARTICIPATING ITEMS 100% VILLAGE OF NEW LENOX	
				ROADWAY 0004 URBAN	SIGNALIZATION 0021 URBAN	LIGHTING 0021 URBAN	WATERMAIN 0043 URBAN	
* 88600100	DETECTOR LOOP, TYPE I	FOOT	814		814			
* 88700200	LIGHT DETECTOR	EACH	1		1			
* 89000100	TEMPORARY TRAFFIC SIGNAL INSTALLATION	EACH	1		1			
* 89501400	RELOCATE EXISTING EMERGENCY VEHICLE PRIORITY SYSTEM, DETECTOR UNIT	EACH	2		2			
* 89501410	RELOCATE EXISTING EMERGENCY VEHICLE PRIORITY SYSTEM, PHASING UNIT	EACH	1		1			
* 89502375	REMOVE EXISTING TRAFFIC SIGNAL EQUIPMENT	EACH	1		1			
* X0324085	EMERGENCY VEHICLE PRIORITY SYSTEM LINE SENSOR CABLE, NO. 20 3/C	FOOT	827		827			
* X0325273	REMOVE AND REINSTALL VIDEO DETECTION CAMERA	EACH	4		4			
* X0327698	LED INTERNALLY ILLUMINATED STREET NAME SIGN	EACH	4		4			
* X1400107	FULL-ACTUATED CONTROLLER AND TYPE SUPER P CABINET	EACH	1		1			
X4021000	TEMPORARY ACCESS (PRIVATE ENTRANCE)	EACH	1	1				
X4022000	TEMPORARY ACCESS (COMMERCIAL ENTRANCE)	EACH	2	2				
X4024000	TEMPORARY ACCESS (FIELD ENTRANCE)	EACH	9	9				
X6026051	<i>SANITARY MANHOLES TO BE RECONSTRUCTED</i>	<i>EACH</i>	<i>5</i>	<i>5</i>				
X6020094	MANHOLES, TYPE A, 6' DIAMETER, TYPE I FRAME, CLOSED LID, RESTRICTOR PLACE	EACH	1	1				
X6700410	ENGINEER'S FIELD OFFICE, TYPE A (SPECIAL)	CAL MO	12	12				
X7010216	TRAFFIC CONTROL AND PROTECTION, (SPECIAL)	LSUM	1	1				
X7030005	TEMPORARY PAVEMENT MARKING REMOVAL	SO FT	11017	11017				
* XX009297	LUMINARIE, LED, HORIZONTAL MOUNT, SPECIAL	EACH	51			51		
* X8300001	LIGHT POLE, SPECIAL	EACH	47			47		
* X8360215	LIGHT POLE FOUNDATION, 24' DIAMETER, OFFSET	FOOT	165			165		
* X8620200	UNINTERRUPTIBLE POWER SUPPLY, SPECIAL	EACH	2			1	1	

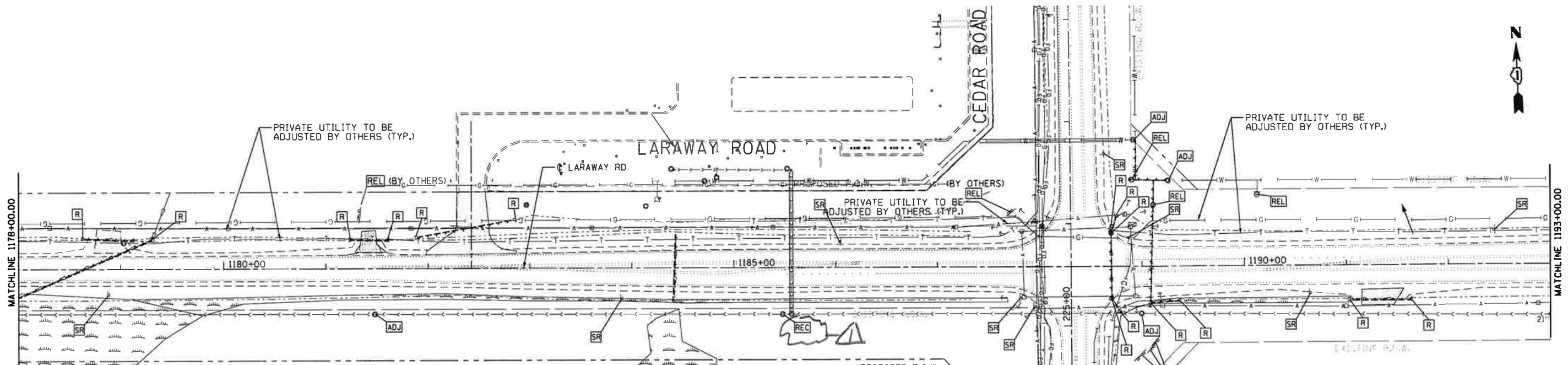
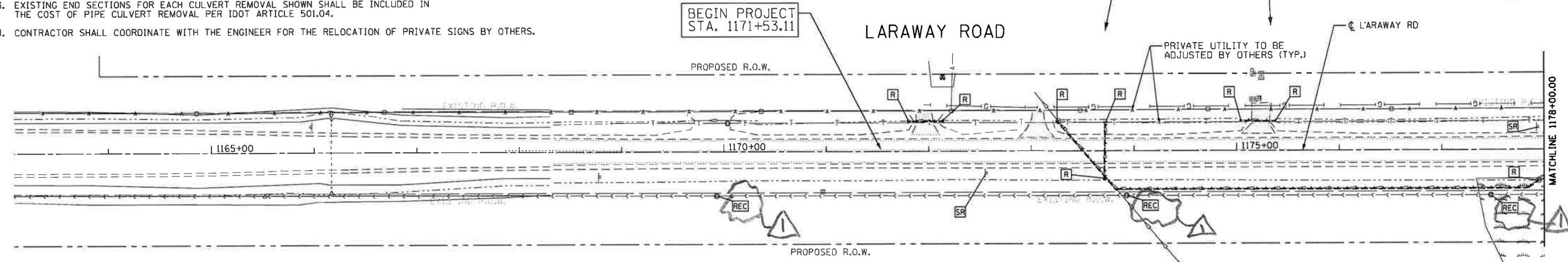
\* SPECIALTY ITEM

FILE NAME =	USER NAME = mohammed.als	DESIGNED JDW	REVISED - <i>6/1/21</i>	STATE OF ILLINOIS DEPARTMENT OF TRANSPORTATION	SUMMARY OF QUANTITIES CEDAR ROAD AND LARAWAY ROAD				F.A.U. RTE.	SECTION	COUNTY	TOTAL SHEETS	SHEET NO.
P:\projects\13003\080\CADD_Sheets\401-684-shs-500.dgn	DRAWN JDW	CHECKED RCH	REVISED -		SCALE:	SHEET 8	OF 8	SHEETS	STA.	TO STA.	WILL	156	12
MODELNAME =	PLOT SCALE = 2.0000' / 1" =	DATE 3/31/21	REVISED -						CONTRACT NO. 61B89				
	PLOT DATE = 4/26/2021								[ILLINOIS] FED. AID PROJECT				

500-8

NOTES:

- PUBLIC UTILITIES ARE SHOWN AT EXISTING LOCATIONS AND ARE TO BE RELOCATED BY OTHERS PRIOR TO START OF ROADWAY CONSTRUCTION. CONTRACTOR SHALL COORDINATE WITH UTILITY COMPANIES FOR THE NEW LOCATION OF ALL RELOCATED UNDERGROUND UTILITIES. THE UNDERGROUND UTILITIES BEING RELOCATED ARE TELEPHONE, AERIAL ELECTRIC, FIBER OPTIC, NATURAL GAS, AND CABLE.
- CONTRACTOR SHALL COORDINATE WITH THE VILLAGE OF NEW LENOX REMOVAL OF EXISTING SIGNAL EQUIPMENT WITH THE INSTALLATION OF TEMPORARY SIGNALIZATION DURING CONSTRUCTION. PERMANENT LOCATIONS OF SIGNALS AND EQUIPMENT ARE PROVIDED ON THE TRAFFIC SIGNAL SHEETS.
- EXISTING END SECTIONS FOR EACH CULVERT REMOVAL SHOWN SHALL BE INCLUDED IN THE COST OF PIPE CULVERT REMOVAL PER IDOT ARTICLE 501.04.
- CONTRACTOR SHALL COORDINATE WITH THE ENGINEER FOR THE RELOCATION OF PRIVATE SIGNS BY OTHERS.



**REMOVAL LEGEND**

	SIGN REMOVAL
	CULVERT REMOVAL
	PAVEMENT REMOVAL
	DRIVEWAY REMOVAL
	UTILITY STRUCTURE REMOVAL
	ITEM RELOCATION
	STRUCTURE ADJUSTMENT
	STRUCTURE ABANDONMENT
	WETLANDS
	STRUCTURE RECONSTRUCTION



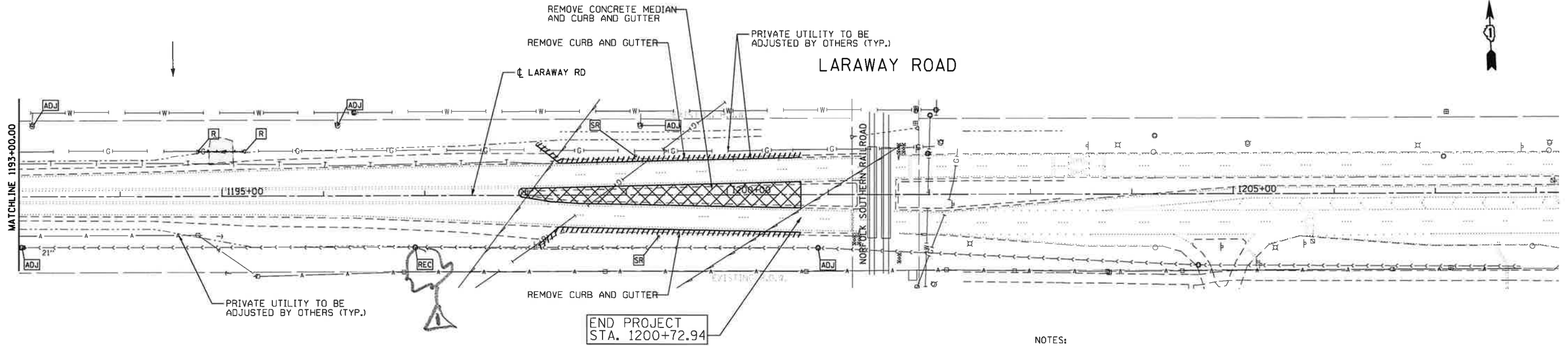
FILE NAME :	USER NAME : daniel.tornj	DESIGNED : JDW	REVISED : 6/1/21
P:\projects\13803\020\CAAD_Sheets\401	684-sh-DEM0.dgn	DRAWN : JDW	REVISED : -
#MODELNAME#	PLOT SCALE : 100.0000 "/> <td>CHECKED : RCH</td> <td>REVISED : -</td>	CHECKED : RCH	REVISED : -
	PLOT DATE : 6/1/2021	DATE : 3/31/21	REVISED : -

**STATE OF ILLINOIS  
DEPARTMENT OF TRANSPORTATION**

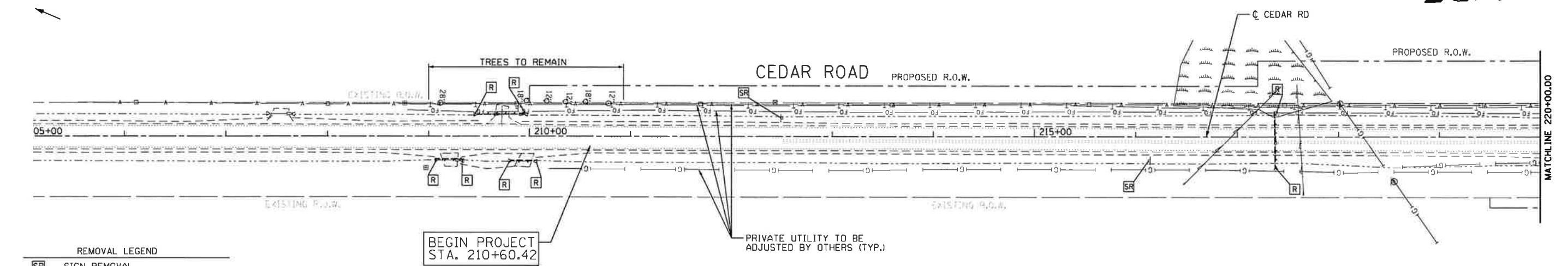
**DEMOLITION AND REMOVAL PLANS  
CEDAR ROAD AND LARAWAY ROAD**

SCALE: 1" = 50' SHEET 1 OF 3 SHEETS STA. TO STA.

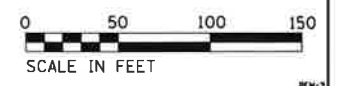
F.A.U. RTE.	SECTION	COUNTY	TOTAL SHEETS	SHEET NO.
369	08-00138-28-TL	WILL	156	23
CONTRACT NO. 61889				
ILLINOIS FED. AID PROJECT				



- NOTES:
1. PUBLIC UTILITIES ARE SHOWN AT EXISTING LOCATIONS AND ARE TO BE RELOCATED PRIOR TO START OF ROADWAY CONSTRUCTION. CONTRACTOR SHALL COORDINATE WITH UTILITY COMPANIES FOR THE NEW LOCATION OF ALL RELOCATED UNDERGROUND UTILITIES. THE UNDERGROUND UTILITIES BEING RELOCATED ARE TELEPHONE, AERIAL ELECTRIC, FIBER OPTIC, NATURAL GAS, AND CABLE.
  2. CONTRACTOR SHALL COORDINATE REMOVAL OF EXISTING SIGNAL EQUIPMENT WITH THE INSTALLATION OF TEMPORARY SIGNALIZATION DURING CONSTRUCTION. PERMANENT LOCATIONS OF SIGNALS AND EQUIPMENT ARE PROVIDED ON THE TRAFFIC SIGNAL SHEETS.
  3. EXISTING END SECTIONS FOR EACH CULVERT REMOVAL SHOWN SHALL BE CONSIDERED INCLUDED IN THE COST OF PIPE CULVERT REMOVAL PER IDOT ARTICLE 501.04.



- REMOVAL LEGEND
- SIGN REMOVAL
  - CULVERT REMOVAL
  - PAVEMENT REMOVAL
  - DRIVEWAY REMOVAL
  - UTILITY STRUCTURE REMOVAL
  - ITEM RELOCATION
  - STRUCTURE ADJUSTMENT
  - STRUCTURE ABANDONMENT
  - WETLANDS
  - STRUCTURE RECONSTRUCTION



FILE NAME =	= daniel.torn1	DESIGNED	JDW	REVISED	6/1/21
P:\projects\13293\020\CV\ADD_Sheets\421	684-shr-DEM0.dgn	DRAWN	JDW	REVISED	-
	PLOT SCALE = 100.0000' / 1"	CHECKED	RCH	REVISED	-
#MODELNAME#	PLOT DATE = 6/1/2021	DATE	3/31/21	REVISED	-

**STATE OF ILLINOIS  
DEPARTMENT OF TRANSPORTATION**

**DEMOLITION AND REMOVAL PLANS  
CEDAR ROAD AND LARAWAY ROAD**

SCALE: 1" = 50' SHEET 2 OF 3 SHEETS STA. TO STA.

F.A.U. RTE.	SECTION	COUNTY	TOTAL SHEETS	SHEET NO.
369	08-00138-28-TL	WILL	156	24
CONTRACT NO. 61B89				
ILLINOIS FED. AID PROJECT				