

INDEX OF SHEETS

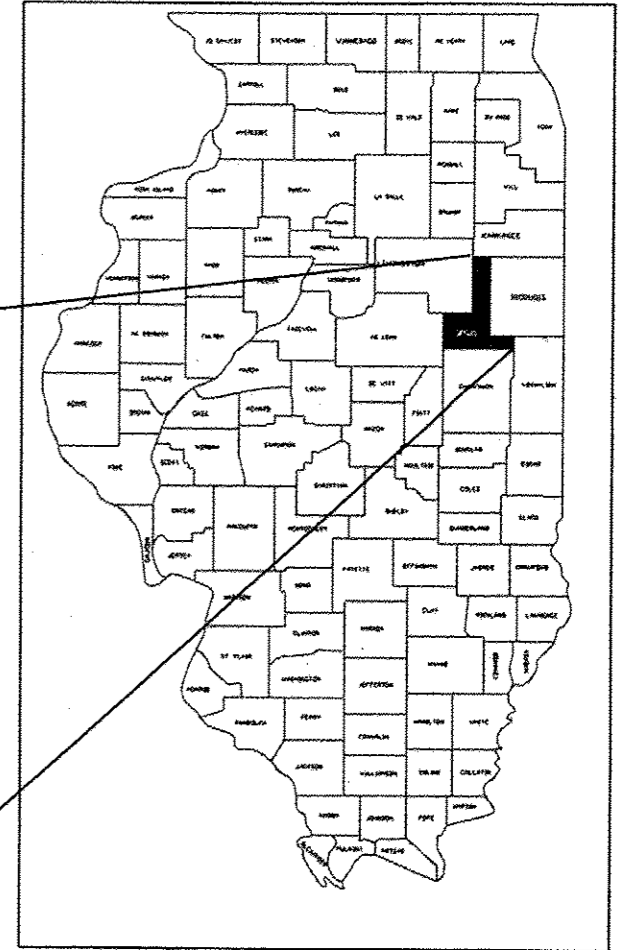
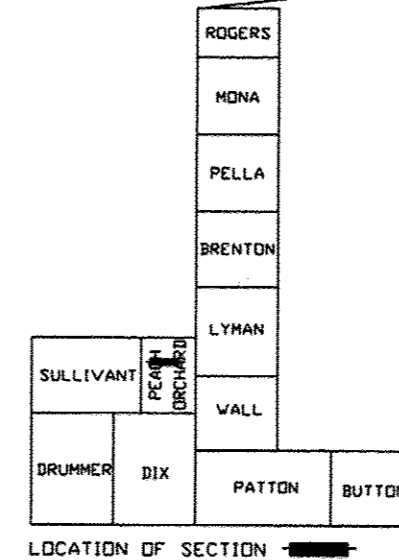
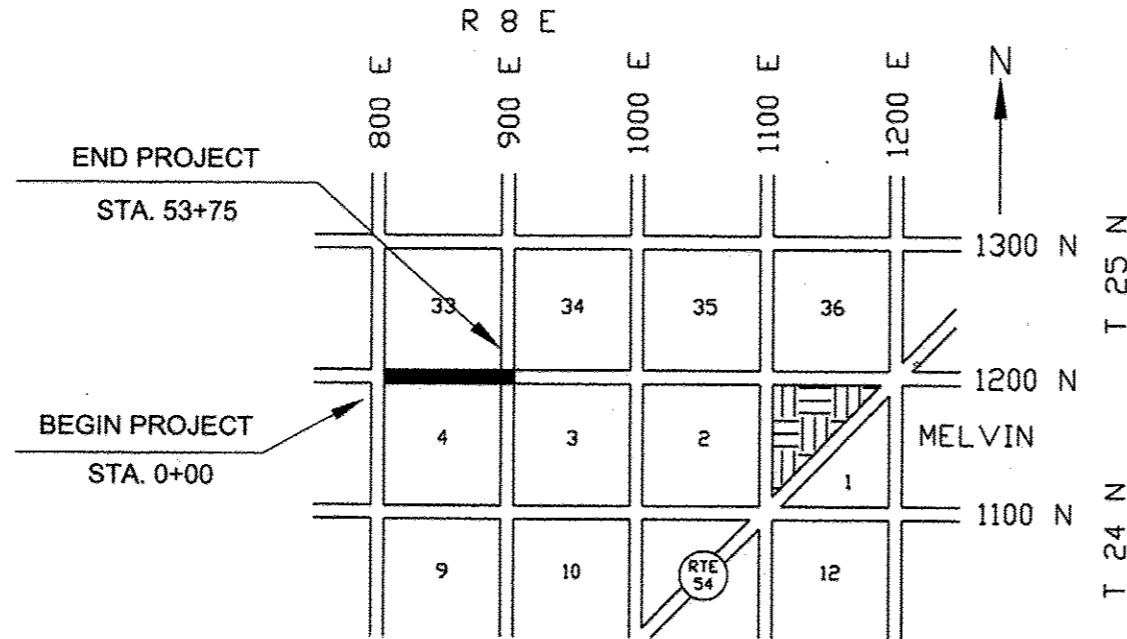
- SHEET 1. COVER SHEET
- SHEET 2. TYPICAL CROSS SECTION, SUMMARY OF QUANTITIES, STRUCTURAL DESIGN, BITUMINOUS MIXTURE TABLE
- SHEET 3. TYPICAL ENTRANCE DETAIL, MAILBOX DETAILS, SIDE ROAD RETURN, GENERAL NOTES

STANDARDS

- 000001-06 STANDARD SYMBOLS, ABBREVIATIONS AND PATTERNS
- 701301-04 LANE CLOSURE 2 LANE, 2 WAY, SHORT TIME OPERATIONS
- 701306-03 LANE CLOSURE 2 LANE, 2 WAY, SLOW MOVING OPERATIONS - DAY ONLY FOR SPEEDS > 45 MPH
- 701311-03 LANE CLOSURE 2 LANE, 2 WAY, MOVING OPERATIONS - DAY ONLY
- 701901-04 TRAFFIC CONTROL DEVICES
- 780001-05 TYPICAL PAVEMENT MARKINGS

STATE OF ILLINOIS
DEPARTMENT OF TRANSPORTATION
DIVISION OF HIGHWAYS
**PLANS FOR PROPOSED
SURFACE TRANSPORTATION RURAL PROGRAM**
C.H. 3 (MELVIN - SIBLEY ROAD)
F.A.S. ROUTE 341 SECTION 16-00121-00-RS FORD COUNTY
PROJECT RS- 0341(113)
JOB NO. C-93-082-14

FAS NO.	SECTION	COUNTY	TOTAL SHEETS	SHEET NO.
341	16-00121-00-RS		3	1
PROJECT RS - 0341(113) CONTRACT # 87592				



UTILITIES

UTILITIES ON THIS SECTION AT VARIOUS LOCATIONS INCLUDES TO THE BEST OF OUR KNOWLEDGE:
FRONTIER TELEPHONE COMPANY (UNDERGROUND)
OVERHEAD POWER - EASTERN ILLINI
PIPELINES: PEOPLES GAS, MOBILE PETROLEUM, MID-AMERICA NGL

CONTRACTORS OR SUBCONTRACTORS SHALL CONTACT J.U.L.I.E. (1-800-892-0123) AT LEAST 72 HOURS PRIOR TO ANY EXCAVATION FOR UTILITIES LOCATION

JOB NO. C-93-082-14
CONTRACT NO. 87592

NOT TO SCALE

GROSS LENGTH = 5375' = 1.018 MI.
NET LENGTH = 5375' = 1.018 MI.
PREVIOUS CONSTRUCTION BY SECTION NUMBERS
16Q-2 AND 87-00056-00-WR

FUNCTIONAL CLASSIFICATION: MAJOR COLLECTOR

Gregory L. Perkinson
ILLINOIS PROFESSIONAL NO. 062-035801



CURRENT (2015) ADT = 300 - 88% PC
9% SU
3% MU
DESIGN ADT (2023) = 350
DESIGN SPEED = 50 MPH

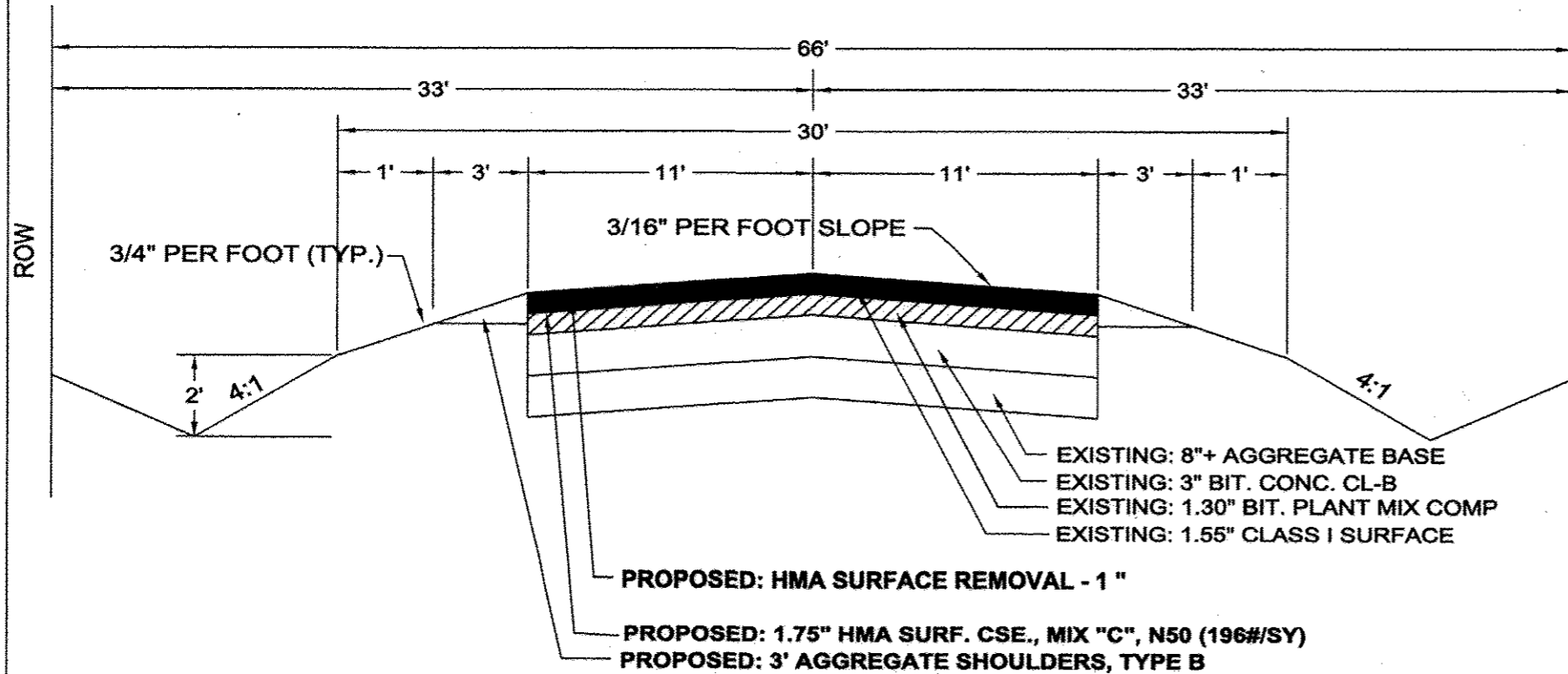
THE ACCEPTANCE OF THIS PROJECT IS BASED ON THE MINIMUM DESIGN CRITERIA UNDER 3R GUIDELINES.

APPROVED	<u>3/24/2015</u> <i>Gregory L. Perkinson</i> FORD COUNTY, COUNTY ENGINEER
PASSED	<u>3/27/15</u> <i>Donald Enatz</i> DISTRICT 3 ENGINEER OF LOCAL ROADS & STREETS
Releasing for Bid Based on Limited Review	<u>3/27/15</u> <i>Paul Suter</i> DEPUTY DIRECTOR OF HIGHWAYS, REGION 2 ENGINEER STATE OF ILLINOIS DEPARTMENT OF TRANSPORTATION

EXPIRES 11-30-2015

TYPICAL CROSS SECTION
SECTION 16-00121-00-RS (MELVIN- SIBLEY ROAD)
STATION 0+00 TO 53+75

FAS NO.	SECTION	COUNTY	TOTAL SHEETS	SHEET NO.
341	16-00121-00-RS		3	2
PROJECT RS-0341(113)				
CONTRACT # 87592				



STRUCTURAL DESIGN
STA. 0+00 TO STA. 53+75
SEC. 16-00121-00-RS

STRUCTURAL DESIGN TRAFFIC YEAR	2023
CURRENT A.D.T.	300
A.D.T. 2023	350
P.V.	308
S.U.	31
M.U.	11
CLASS	IV
MINIMUM SOIL SUPPORT IBV	3
TRAFFIC FACTOR	0.009
Dt REQUIRED	2.00

EXISTING BASE:

8" AGGREGATE BASE	8" X 0.06 = 0.480
3.0" BIT PLANT MIX (LA)	3.0" X 0.12 = 0.360
1.30" BIT. CONC MIXTURE COMPLETE	1.30" X 0.23 = 0.299
1.55" BIT. CONC CL I (POST 1955)	1.55" X 0.30 = 0.465
SUBTOTAL EXISTING	1.604

PROPOSED:

COLD MILL 1.0" EXISTING SURFACE	1.0" X - 0.30 = - 0.300
1.75" HMA SURF. CSE., MIX "C", N50	1.75" X 0.40 = 0.700
Dt TOTAL	2.004

SUMMARY OF QUANTITIES

CONSTRUCTION TYPE CODE 0005

CODE NO.	ITEM	UNIT	QUANTITY
* 40600275	BITUMINOUS MATERIALS (PRIME COAT)	POUND	6,100
40600990	TEMPORARY RAMP	SQ YD	20
40603310	HOT- MIX ASPHALT SURFACE COURSE, MIX "C", N50	TON	1,300
40800050	INCIDENTAL HOT-MIX ASPHALT SURFACING	TON	21
44000153	HOT-MIX ASPHALT SURFACE REMOVAL, 1"	SQ YD	14,100
* 48101200	AGGREGATE SHOULDERS, TYPE B	TON	300
67100100	MOBILIZATION	L SUM	1
70100460	TRAFFIC CONTROL AND PROTECTION, STANDARD 701306	L SUM	1
70300100	SHORT TERM PAVEMENT MARKING	FOOT	1,075
70301000	WORK ZONE PAVEMENT MARKING REMOVAL	SQ FT	175
# 78001110	PAINT PAVEMENT MARKING - LINE 4"	FOOT	2,010

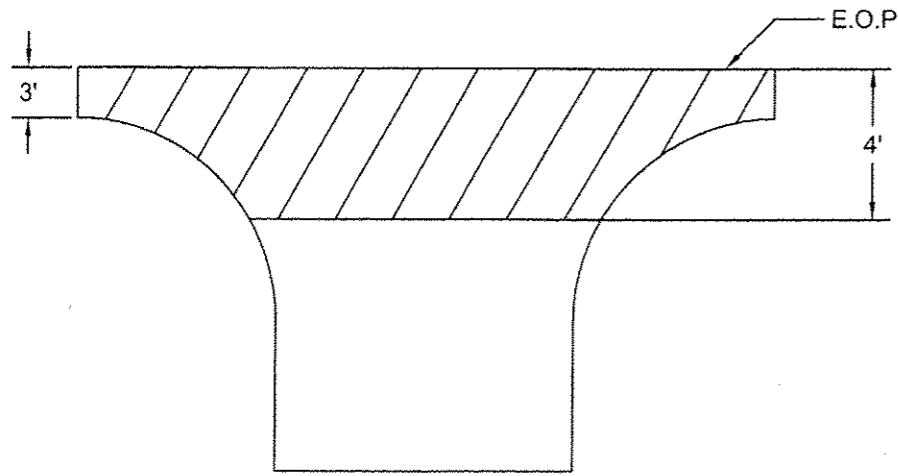
* INDICATES SEE SPECIAL PROVISIONS

INDICATES SPECIALTY ITEM

BITUMINOUS MIXTURE TABLE

LOCATION (S):	HMA LEVEL BINDER	MAINLINE	INTERSECTIONS
MIXTURE USE (S):	HMA LEVEL BINDER	HMA SURFACE	INCIDENTAL HMA
PG GRADE	N/A	PG 64-22	PG 64-22
DESIGN AIR VOIDS	N/A	4.0 % @ N50	4.0 % @ N50
MIX COMPOSITION	N/A	IL 9.5	IL 9.5
FRICTION AGGREGATE	N/A	MIXTURE "C"	MIXTURE "C"
MIXTURE WEIGHT:	N/A	112.0 LB/SQ YD/INCH	112.0 LB/SQ YD/INCH
QUALITY MANAGEMENT PROGRAM	N/A	QC/QA	QC/QA
SUBLOT SIZE:	N/A	N/A	N/A
DENSITY TEST METHOD:	N/A	CORRELATION	SATISFACTION OF ENG.

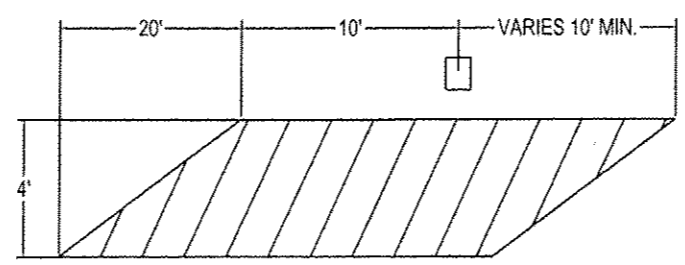
FAS NO.	SECTION	COUNTY	TOTAL SHEETS	SHEET NO.
341	16-00121-00-RS		3	3
PROJECT RS- 0341(113)				
CONTRACT # 87592				



TYPICAL FIELD & PRIVATE ENTRANCE

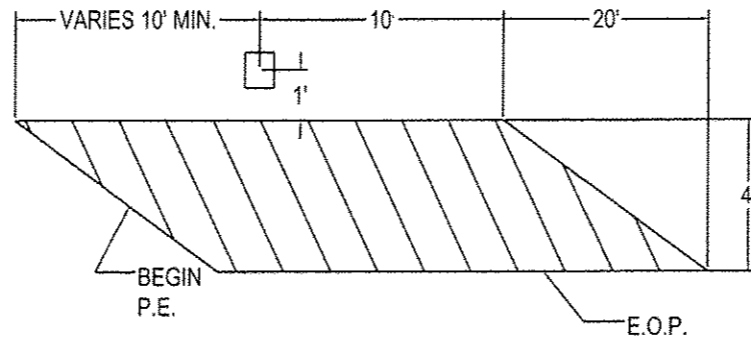
7 EACH

LT. STA.	RT. STA.
18+78	25+64
24+94	29+22
36+76	32+16
44+05	



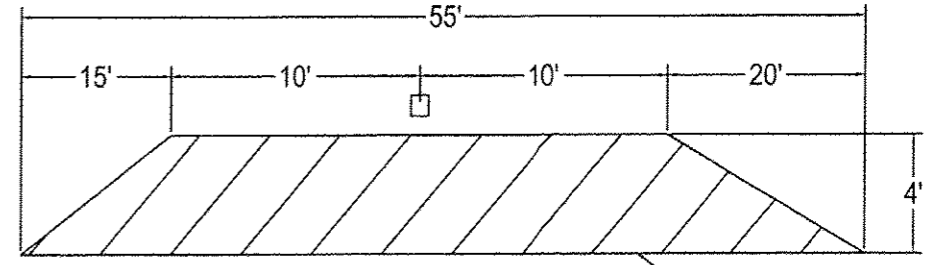
TYPICAL MAILBOX FOLLOWING

0 EACH



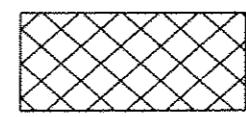
TYPICAL MAILBOX LEAD IN

1 EACH
44+22 LT



TYPICAL MAILBOX TURN OUT

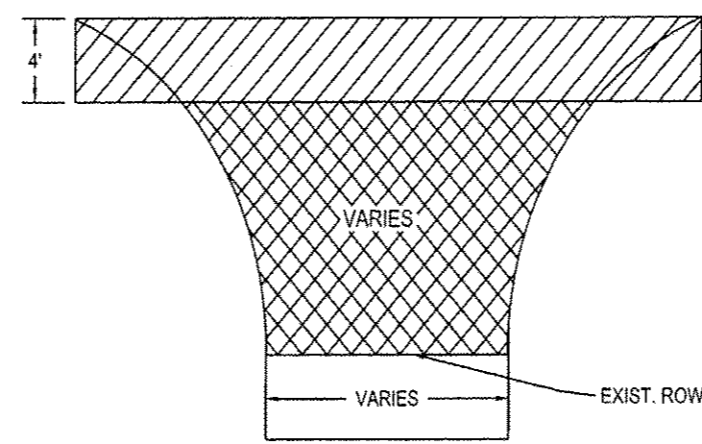
1 EACH
29+75 RT



AREA TO BE PAID AS
INCIDENTAL BITUMINOUS SURFACING



AREA TO BE CONSTRUCTED
DURING MAINLINE PAVING OPERATIONS
SLOPE = 3/4" PER FOOT



TYPICAL SIDE ROAD RETURN

2 EACH
STA. 51+54 LT
STA. 52+13 RT

NOTES

1. USE SAME MAINLINE MATERIAL FOR SIDE ROAD RETURNS, FIELD & PRIVATE ENTRANCES, AND MAILBOXES.
2. AGGREGATE SHOULDERS TO BE PLACED BEHIND SIDE ROAD RETURNS, FIELD & PRIVATE ENTRANCES, AND MAILBOXES AS DIRECTED BY THE ENGINEER.
3. SHORT TERM PAVEMENT MARKINGS TO BE REMOVED BY THE CONTRACTOR.
4. THE FOLLOWING APPLICATION RATES HAVE BEEN ASSUMED IN CALCULATING QUANTITIES:

AGGREGATE SHOULDERS	2.00 TON / CU YD
BIT MATL (PR CT)	0.05 LBS / SQ FT
HOT MIX ASPHALT	112 # / SQ YD / INCH
SHORT TERM PVMT MKING	4 FT / 40 FT OF APPL.