

STATE OF ILLINOIS  
DEPARTMENT OF TRANSPORTATION

F.A. RTE.	SECTION	COUNTY	TOTAL SHEETS	SHEET NO.
VAR	2019 136-I	VARIOUS	8	J
		ILLINOIS	CONTRACT NO. 62K10	

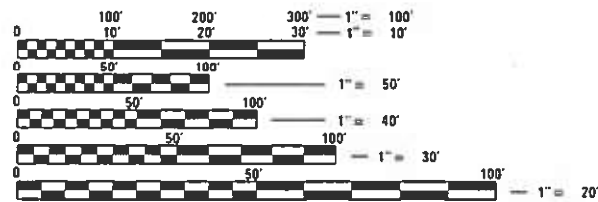
FOR INDEX OF SHEETS, SEE SHEET NO. 2

**PROPOSED  
HIGHWAY PLANS**

ROUTE: VARIOUS  
SECTION 2019-136-I  
PROJECT: N/A  
DEAD TREE REMOVAL  
VARIOUS COUNTIES

C-91-066-20

IMPROVEMENTS ARE AT VARIOUS  
LOCATIONS WITHIN DISTRICT ONE



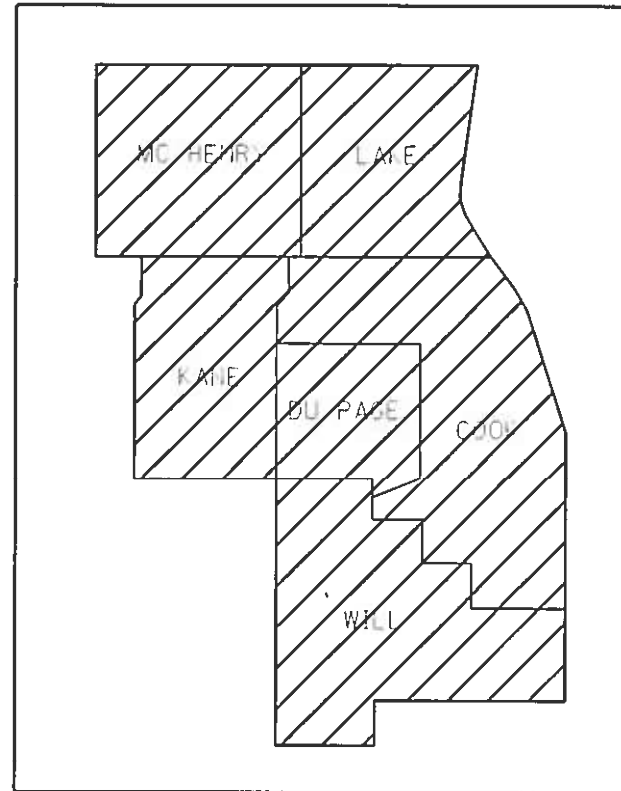
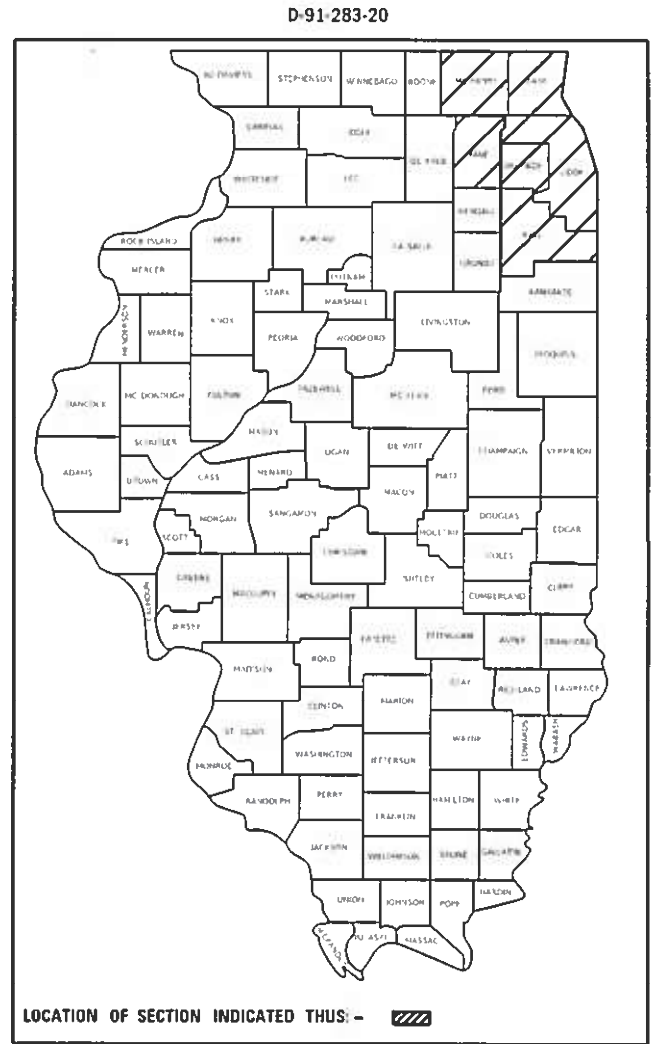
FULL SIZE PLANS HAVE BEEN PREPARED USING STANDARD ENGINEERING SCALES. REDUCED SIZED PLANS WILL NOT CONFORM TO STANDARD SCALES. IN MAKING MEASUREMENTS ON REDUCED PLANS, THE ABOVE SCALES MAY BE USED.

J.U.L.I.E.  
JOINT UTILITY LOCATION INFORMATION FOR EXCAVATORS  
1-800-892-0123  
OR 811

PROJECT ENGINEER JAMES STUMPNER  
PROJECT MANAGER GIOVANNA ZAFFINA (847) 705-4171

CONTRACT NO. 62K10

GROSS LENGTH = x.xx FT. = x.xxx MILE  
NET LENGTH = x.xx FT. = x.xxx MILE



STATE OF ILLINOIS  
DEPARTMENT OF TRANSPORTATION

SUBMITTED February 6 2020

Anthony J. Quigley, P.E. REGIONAL ENGINEER

May 8, 2020 Scott A. Elk  
ENGINEER OF DESIGN AND ENVIRONMENT

May 8, 2020 James Stumpner  
DIRECTOR OF HIGHWAYS PROJECT IMPLEMENTATION

PRINTED BY THE AUTHORITY  
OF THE STATE OF ILLINOIS



SUMMARY OF QUANTITIES			TOTAL QUANTITIES	CONSTRUCTION TYPE CODE				
CODE NO	ITEM	UNIT		URBAN 100% STATE 0031	FORMAL FUNDS 0031			
X2100002	PRUNING FOR SAFETY AND EQUIPMENT CLEARANCE	UNIT	100	100				
X2010110	TREE REMOVAL (16 TO 15 UNITS DIAMETER), EXPEDITED	UNIT	200		200			
X2010210	TREE REMOVAL (OVER 15 UNITS DIAMETER) EXPE EXPEDITED	UNIT	200		200			
X2011300	TREE PRUNING (1 TO 10 INCH DIAMETER), EXPEDITED	UNIT	10	10				
X2011350	TREE PRUNING (OVER 10 INCH DIAMETER), EXPEDITED	EACH	20	20				
X2010101	TREE LIMB REMOVAL (14 TO 10 INCHES DIAMETER), EXPEDITED	EACH	10	10				
X2010201	TREE LIMB REMOVAL (OVER 10 INCHES DIAMETER), EXPEDITED	EACH	10	10				
X2010311	TREE REMOVAL (SPECIAL), EXPEDITED	UNIT	5		5			
X2010351	TREE REMOVAL ACRES (SPECIAL), EXPEDITED	ACRE	2		2			
X2100003	SELECTIVE CLEARING, EXPEDITED	UNIT	20		20			
20100110	TREE REMOVAL (6 TO 15 UNITS DIAMETER)	UNIT	4200	4000	200			
20100210	TREE REMOVAL (OVER 15 UNITS DIAMETER)	UNIT	5000	4800	200			

SUMMARY OF QUANTITIES			TOTAL QUANTITIES	CONSTRUCTION TYPE CODE				
CODE NO	ITEM	UNIT		URBAN 100% STATE 0031	FORMAL FUNDS 0031			
20101000	TEMPORARY FENCE	FOOT	2860		2860			
20101300	TREE PRUNING (1 TO 10 INCH DIAMETER)	EACH	115	15	100			
20101350	TREE PRUNING (OVER 10 INCH DIAMETER)	EACH	130	30	100			
X0100018	TREE REMOVAL (UNDER 6 UNITS DIAMETER)	UNIT	500	500				
X0325222	WEED CONTROL, BASAL TREATMENT	GALLON	25	25				
X0327120	WEED CONTROL, NATIVE LANDSCAPE ENHANCEMENT	ACRE	13	3	10			
X2010100	TREE LIMB REMOVAL (4 TO 10 INCHES DIAMETER)	EACH	35	15	20			
X2010200	TREE LIMB REMOVAL (OVER 10 INCHES DIAMETER)	EACH	40	20	20			
X2010310	TREE REMOVAL (SPECIAL)	UNIT	8	8				
X2010350	TREE REMOVAL, ACRES (SPECIAL)	ACRE	16	8	8			
X2010400	STUMP REMOVAL ONLY	UNIT	500	200	300			
Z0064800	SELECTIVE CLEARING	UNIT	115	115				
*	SPECIALTY ITEM							

FILE NAME: USER NAME: DESIGNED: REVISIONS: DRAWN: CHECKED: DATE: PLOT SCALE: 1/8" = 1' PLOT DATE: 2/6/2020

DESIGNED: REVISIONS: DRAWN: CHECKED: DATE: PLOT SCALE: 1/8" = 1' PLOT DATE: 2/6/2020

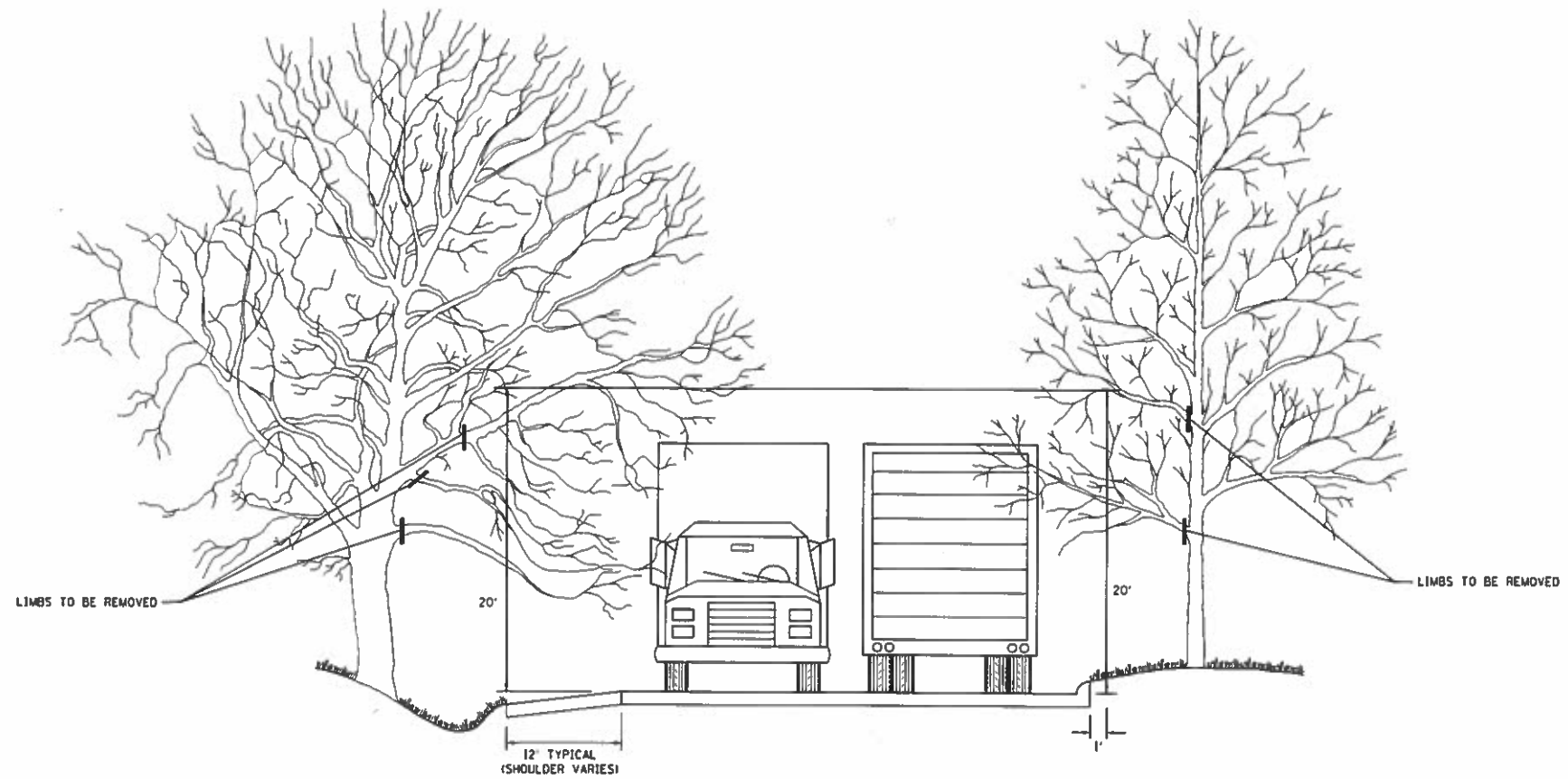
STATE OF ILLINOIS DEPARTMENT OF TRANSPORTATION

DEAD TREE REMOVAL SUMMARY OF QUANTITIES SCALE: SHEET NO. OF SHEETS STA. TO STA.

F.A. RTE. VAR SECTION 2019-136-1 COUNTY VARIOUS TOTAL SHEETS 8 SHEET NO. 3 CONTRACT NO. 62K10 FED. ROAD DIST. NO. ILLINOIS FED. AID PROJECT







NOTE: IF A DEAD AND/OR HAZARDOUS LIMB IS FOUND TO BE AT A HIGHER ELEVATION THAN THE PRUNING CLEARANCE REQUIREMENT, THE CONTRACTOR SHALL PRUNE THE LIMB AND THE COST OF WORK SHALL BE INCIDENTAL TO PAY ITEM.

MODEL: Default  
FILE: I:\work\2019\136-1\136-1.dwg  
PLOT DATE: 2/6/2020  
PLOT SCALE: 1/8" = 1'-0"  
PLOT SIZE: 11.00 x 17.00  
PLOT AREA: 187.00 sq. ft.  
PLOT PERIMETER: 54.00 ft.  
PLOT CENTER: 11.00, 17.00  
PLOT ORIGIN: 0.00, 0.00  
PLOT SCALE: 1/8" = 1'-0"  
PLOT SIZE: 11.00 x 17.00  
PLOT AREA: 187.00 sq. ft.  
PLOT PERIMETER: 54.00 ft.  
PLOT CENTER: 11.00, 17.00  
PLOT ORIGIN: 0.00, 0.00

USER NAME = delosaroms	DESIGNED -	REVISED -
PLOT SCALE = 1/8" = 1'-0"	DRAWN -	REVISED -
PLOT DATE = 2/6/2020	CHECKED -	REVISED -
	DATE -	REVISED -

STATE OF ILLINOIS  
DEPARTMENT OF TRANSPORTATION

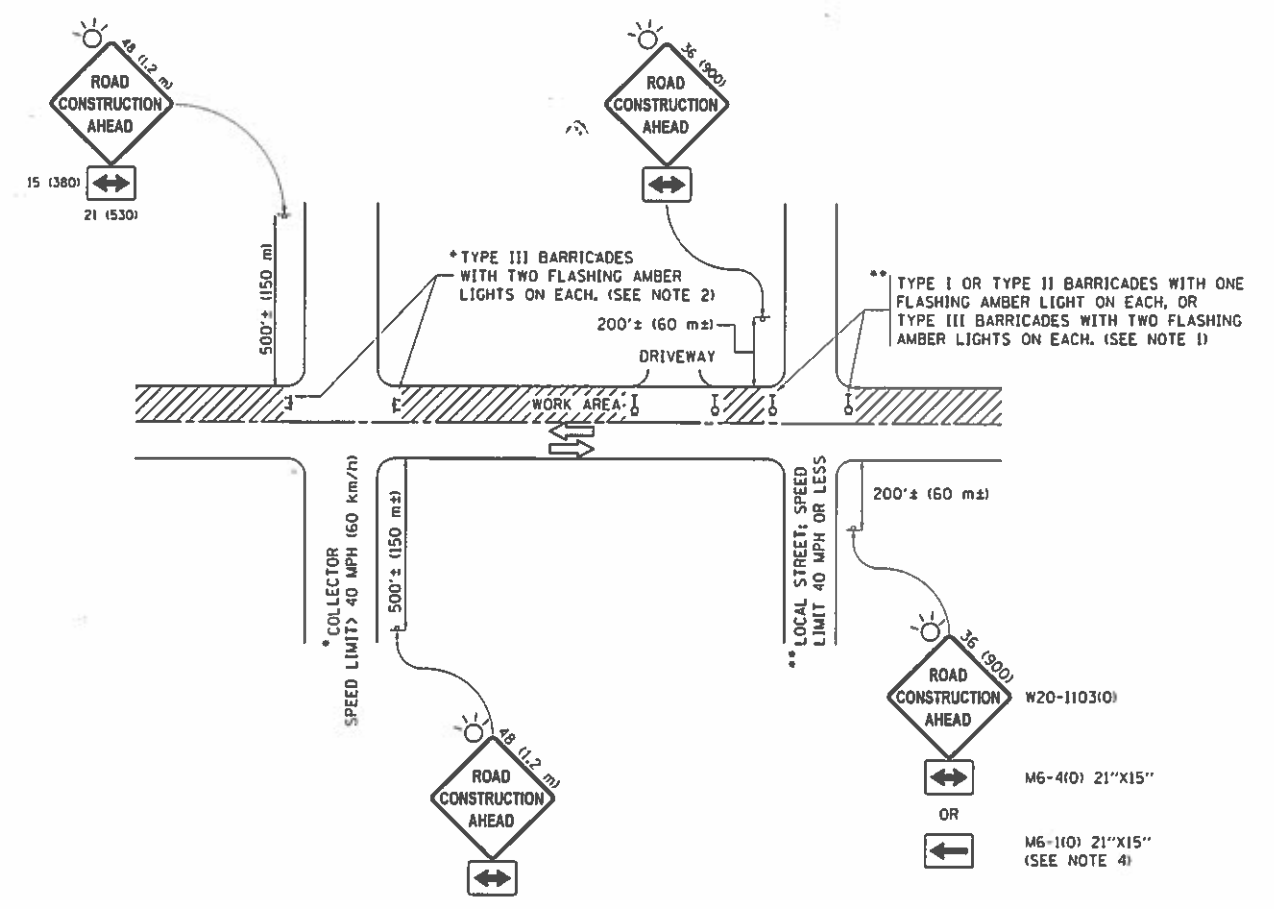
DEAD TREE REMOVAL  
PRUNING FOR SAFETY AND EQUIPMENT CLEARANCE

P.A. RTE	SECTION	COUNTY	TOTAL SHEETS	SHEET NO.
VAR	2019-136-1	VARIOUS	8	6
CONTRACT NO. 62K10				

SCALE \_\_\_\_\_ SHEET \_\_\_\_\_ OF \_\_\_\_\_ SHEETS STA \_\_\_\_\_ TO STA \_\_\_\_\_

ILLINOIS FED. AID PROJECT

I:\MODELS\DC\4421\FILE NAME - P:\WORKROOM\dot.dbaos\dot.pw\DOT\Documents\DOT\Projects\District 11\Projects\110662\DC\4421\Structure\1106270.dwg - d11111.dgn



**NOTES:**

1. SIDE ROAD WITH A SPEED LIMIT OF 40 MPH (60 km/h) OR LESS AS SHOWN ON THE DRAWING AND AS DIRECTED BY THE ENGINEER:
  - a) ONE "ROAD CONSTRUCTION AHEAD" SIGN 36 x 36 (900x900) WITH A FLASHER MOUNTED ON IT APPROXIMATELY 200' (60 m) IN ADVANCE OF THE MAIN ROUTE.
  - b) THE CLOSED PORTION OF THE MAIN ROUTE SHALL BE PROTECTED BY BLOCKING WITH TYPE I, TYPE II OR TYPE III BARRICADES, 1/3 OF THE CROSS SECTION OF THE CLOSED PORTION.
2. SIDE ROAD WITH A SPEED LIMIT GREATER THAN 40 MPH (60 km/h) AS SHOWN ON THE DRAWING AND AS DIRECTED BY THE ENGINEER:
  - a) ONE "ROAD CONSTRUCTION AHEAD" SIGN 48 x 48 (1.2 m x 1.2 m) WITH A FLASHER MOUNTED ON IT APPROXIMATELY 500' (150 m) IN ADVANCE OF THE MAIN ROUTE.
  - b) THE CLOSED PORTION OF THE MAIN ROUTE SHALL BE PROTECTED BY BLOCKING WITH TYPE III BARRICADES, 1/2 OF THE CROSS SECTION OF THE CLOSED PORTION.
3. CONES MAY BE SUBSTITUTED FOR BARRICADES OR DRUMS AT HALF THE SPACING DURING DAY OPERATIONS. CONES SHALL BE A MINIMUM OF 28 (710) IN HEIGHT.
4. WHEN THE SIDE ROAD LIES BETWEEN THE BEGINNING OF THE MAINLINE SIGNING AND THE WORK ZONE, A SINGLE HEADED ARROW (M6-1) SHALL BE USED IN LIEU OF THE DOUBLE HEADED ARROW (M6-4).
5. WHEN WORK IS BEING PERFORMED ON A SIDE ROAD OR DRIVEWAY, FOLLOW THE APPLICABLE STANDARD(S). THE DIRECTIONAL ARROW (M6-1 OR M6-4) SHALL BE COVERED OR REMOVED WHEN NO LONGER CONSISTENT WITH THE TRAFFIC CONTROL SET-UP.
6. ADVANCE WARNING SIGNS ARE TO BE OMITTED ON DRIVEWAYS UNLESS OTHERWISE SPECIFIED IN THE PLANS OR BY THE ENGINEER.
7. THE TRAFFIC CONTROL AND PROTECTION FOR SIDE ROADS, INTERSECTIONS, AND DRIVEWAYS SHALL BE INCLUDED IN THE COST OF SPECIFIED TRAFFIC CONTROL STANDARDS OR ITEMS.

All dimensions are in inches (millimeters) unless otherwise shown.

**STATE OF ILLINOIS**  
**DEPARTMENT OF TRANSPORTATION**

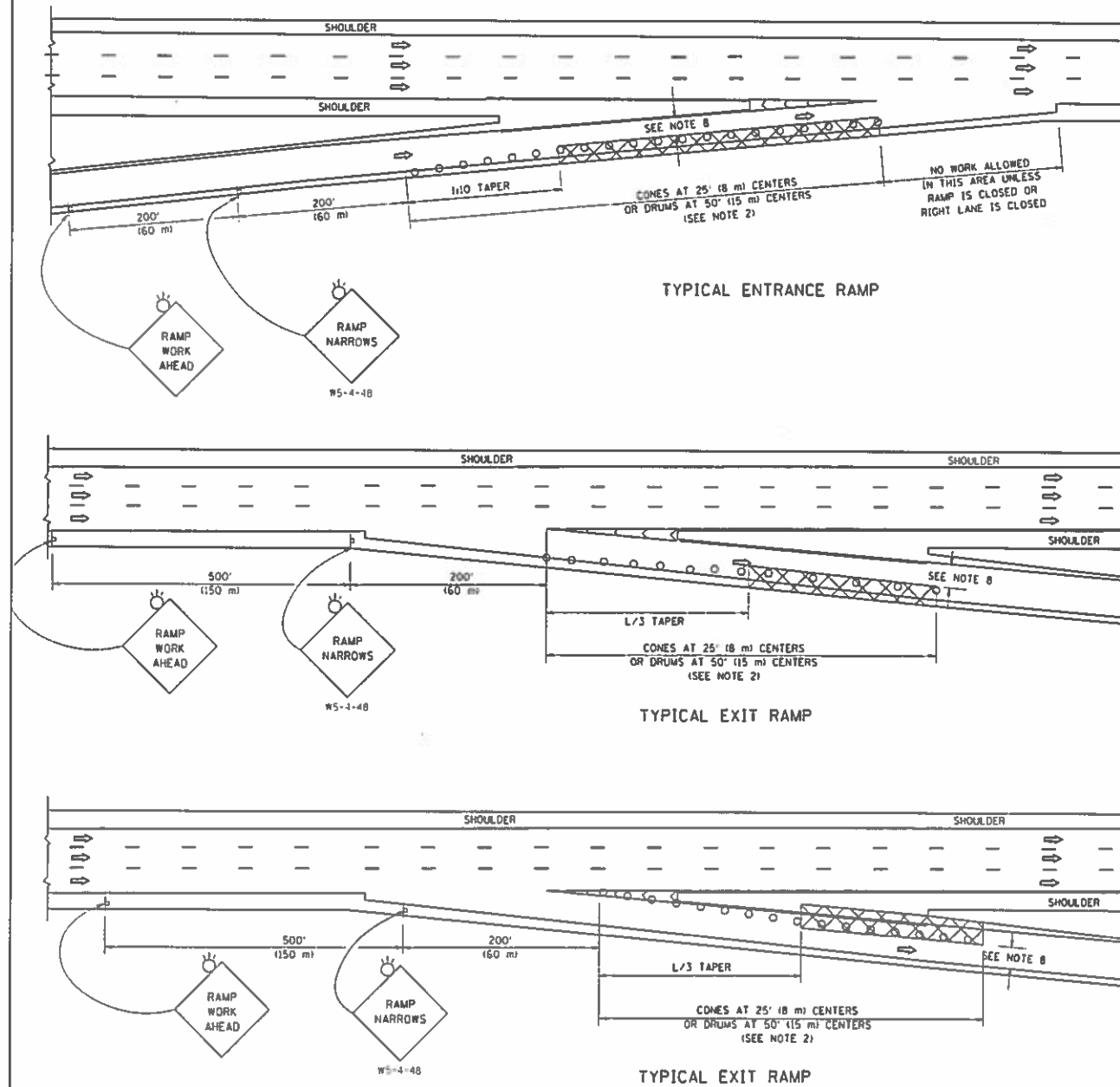
**TRAFFIC CONTROL AND PROTECTION FOR SIDE**  
**ROADS, INTERSECTIONS, AND DRIVEWAYS (TC-10)**

USER NAME = delosarions	DESIGNED -	REVISED -
PL01 SCALL = 99.9381 / in	DRAWN -	REVISED -
PL01 DATE = 2/6/2020	CHECKED -	REVISED -
	DATE -	REVISED -

I.A RTE VAR	SECTION	COUNTY	TOTAL SHEETS	SHEET NO
	2019-136-I	VARIOUS	8	7
CONTRACT NO. 62K10				
ILLINOIS   FED AID PROJECT				

SCALE \_\_\_\_\_ SHEET \_\_\_\_\_ OF \_\_\_\_\_ SHEETS | STA \_\_\_\_\_ TO STA \_\_\_\_\_

PARTIAL RAMP CLOSURE DETAILS



SYMBOLS

- ACTIVE WORK AREA
- SIGN ON PORTABLE OR PERMANENT SUPPORT
- FLAGGER WITH CONTROL SIGN
- TYPE II BARRICADE OR DRUM
- CONE, DRUM OR BARRICADE
- IMPACT ATTENUATOR OF TYPE AND TEST LEVEL SPECIFIED

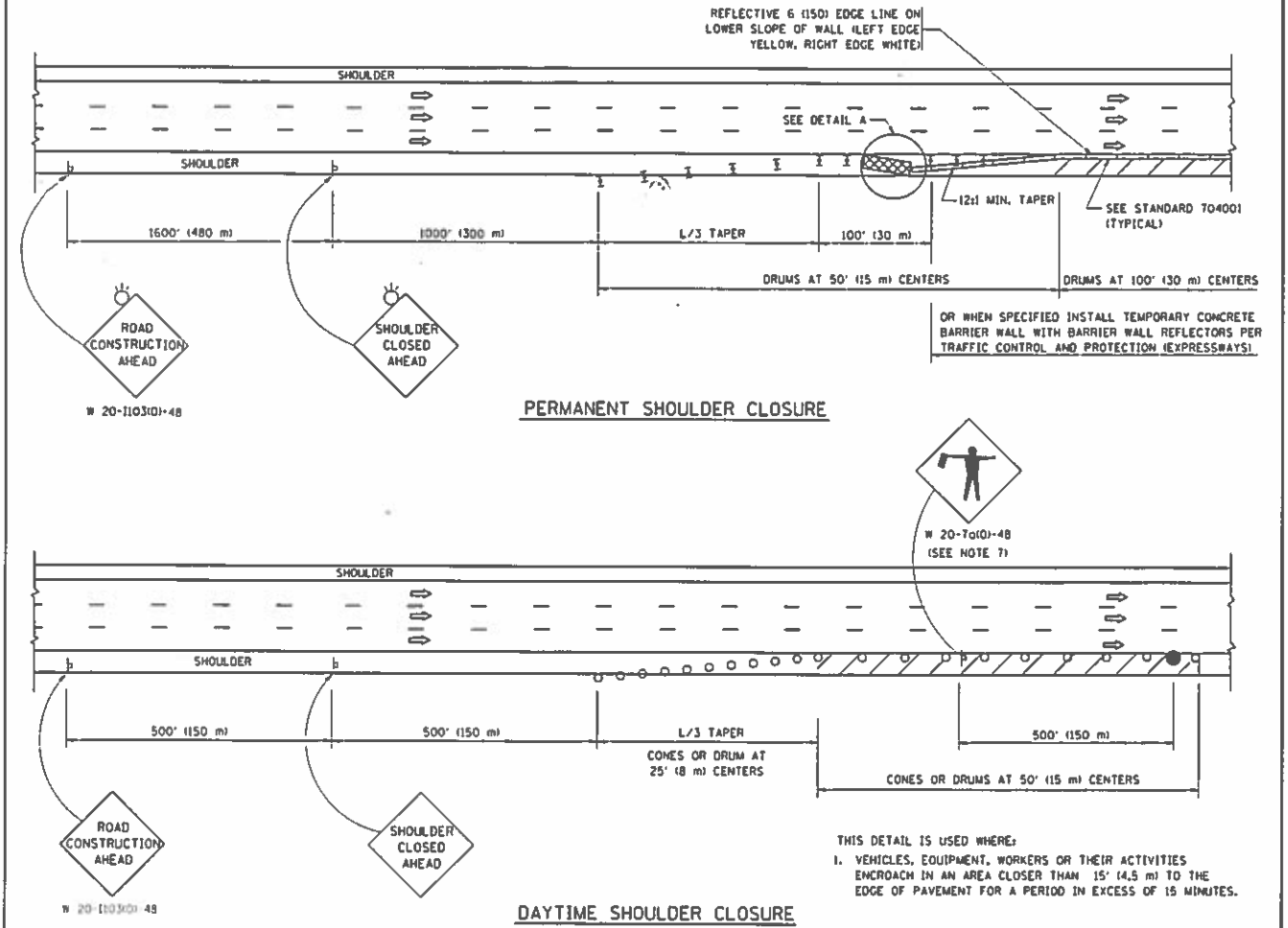
GENERAL NOTES

1. THE "L" DISTANCE EQUALS:
 

SPEED LIMIT	FORMULAS
45 mph (80 km/h) OR GREATER	METRIC: $L=0.65WS$ ENGLISH: $L=WS$

 W = WIDTH OF OFFSET IN FEET (METERS)  
 S = NORMAL POSTED SPEED MPH (KM/H)
2. TYPE II BARRICADES OR DRUMS ARE REQUIRED FOR ALL NIGHTTIME CLOSURES. TYPE II BARRICADES OR DRUMS WITH UNIDIRECTIONAL STEADY BURN LIGHTS ARE REQUIRED FOR DELINEATING OBSTACLES, EXCAVATIONS, OR HAZARDS EXCEEDING 100 FT (30m) IN LENGTH AT NIGHT.
3. ALL SIGNS SHALL BE POST MOUNTED IF THE CLOSURE TIME EXCEEDS FOUR DAYS.
4. FLASHING LIGHTS SHALL BE USED DURING THE HOURS OF DARKNESS AND SHALL BE INSTALLED ABOVE THE FIRST TWO SETS OF SIGNS.

SHOULDER CLOSURE DETAILS



ARRAY DESIGN PER MANUFACTURER TO BE NCHRP 350/MASH COMPLIANT.

DETAIL "A"  
IMPACT ATTENUATOR, TEMPORARY  
(SEE NOTE 5)

5. THE IMPACT ATTENUATOR, TEMPORARY IS NOT REQUIRED WHEN THE TEMPORARY CONCRETE BARRIER WALL IS PROTECTED BY OR IS TIED INTO THE EXISTING GUARDRAIL. IF OFFSET IS LESS THAN 5 FEET USE NARROW USE TYPE DEVICE TO MEET NCHRP350/MASH.
6. AUTHORIZATION FROM THE DISTRICT'S BUREAU OF TRAFFIC IS REQUIRED FOR ALL FREEWAY CLOSURES.
7. THE FLAGGER AND FLAGGER SIGN ARE REQUIRED AT THE ABOVE WORK SITES WHEN:
  - a. FOUR OR MORE WORK VEHICLES ENTER THE TRAFFIC LANES IN A ONE HOUR PERIOD.
  - b. THE WORK ACTIVITY REQUIRES FREQUENT ENCROACHMENT INTO THE LANE OPEN TO TRAFFIC.
 THE FLAGGER SHALL BE STATIONED APPROXIMATELY 100' (30 m) TO 200' (60 m) IN ADVANCE OF THE WORKERS.
8. 12' MIN. WIDTH TANGENT SECTION  
16' MIN. WIDTH CURVE SECTION.

THIS DETAIL IS USED WHERE:  
1. VEHICLES, EQUIPMENT, WORKERS OR THEIR ACTIVITIES ENCROACH IN AN AREA CLOSER THAN 15' (4.5 m) TO THE EDGE OF PAVEMENT FOR A PERIOD IN EXCESS OF 15 MINUTES.

ALL DIMENSIONS ARE IN INCHES (MILLIMETERS) UNLESS OTHERWISE SHOWN.

MODEL: D:\p1\... FILE NAME: ...

USER NAME = dclrosaloms	DESIGNED -	REVISED -
PLOT SCALE = 1/32" = 1' / in.	DRAWN -	REVISED -
PLOT DATE = 2/6/2020	CHECKED -	REVISED -
	DATE -	REVISED -

STATE OF ILLINOIS  
DEPARTMENT OF TRANSPORTATION

TRAFFIC CONTROL DETAIL FOR FREEWAY SHOULDER  
CLOSURES AND PARTIAL RAMP CLOSURE (TC-17)

SCALE \_\_\_\_\_ SHEET \_\_\_\_\_ OF \_\_\_\_\_ SHEETS STA \_\_\_\_\_ TO STA \_\_\_\_\_

F.A. RTE. VAR	SECTION 2019-136-1	COUNTY VARIOUS	TOTAL SHEETS 8	SHEET NO. 8
				CONTRACT NO. G2K10

ILLINOIS FFD AID PROJECT