

STATE OF ILLINOIS
DEPARTMENT OF TRANSPORTATION

F.A.I. RTE.	SECTION	COUNTY	TOTAL SHEETS	SHEET NO.
57&74	D5 CM PATCH 2020-4	CHAMPAIGN	15	1
CHAMPAIGN & VERMILION		ILLINOIS	CONTRACT NO. 70E39	

FOR INDEX OF SHEETS, SEE SHEET NO. 2
FOR SUMMARY OF QUANTITIES, SEE SHEET NO. 4

PROPOSED HIGHWAY PLANS

FAI ROUTES 57 & 74 (I-57 & I-74)
SECTION D5 CM PATCH 2020-4
PROJECT
PATCHING
CHAMPAIGN & VERMILION COUNTIES

C-95-023-20

CURRENT TRAFFIC DATA

	Leg "A"	Leg "B"	Leg "C"
	I-57	I-57	I-74
2020 ADT	= 26100	19500	25100
P.U. & P.C.%	= 75.7	65.3	70.1
SU%	= 2.8	2.9	4.0
MU%	= 21.5	31.8	25.9
Truck Rte. Class	= Class I	Class I	Class I
N.H.S. Route	= Yes	Yes	Yes

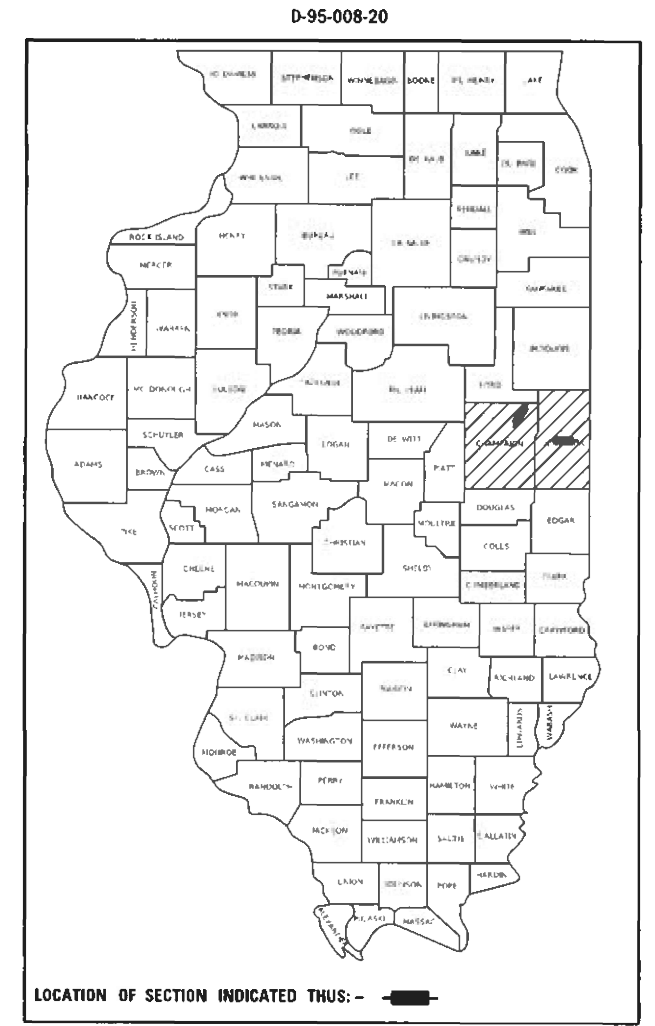
Leg "A" is I-57 from FAS 517(CH11) to US 136 in Champaign County.
Leg "B" is I-57 from US 136 to TR 35(3300N) in Champaign County.
Leg "C" is I-74 under & 1200' to the west of US 150 in Vermilion County.

DESIGN DESIGNATION

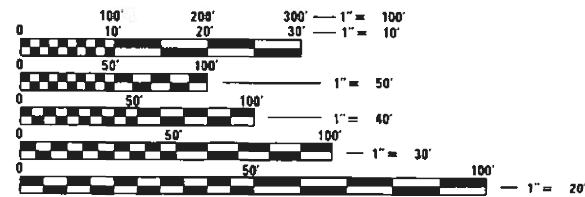
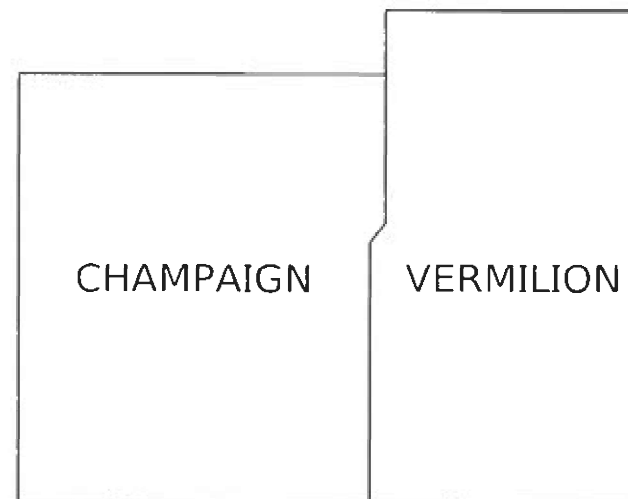
INTERSTATE

TOWNSHIPS

CHAMPAIGN COUNTY	VERMILION COUNTY
LUDLOW	DANVILLE
RANTOUL	



FOR LOCATIONS, SEE SHEET 3



FULL SIZE PLANS HAVE BEEN PREPARED USING STANDARD ENGINEERING SCALES. REDUCED SIZED PLANS WILL NOT CONFORM TO STANDARD SCALES. IN MAKING MEASUREMENTS ON REDUCED PLANS, THE ABOVE SCALES MAY BE USED.

J.U.L.I.E.
JOINT UTILITY LOCATION INFORMATION FOR EXCAVATORS
1-800-892-0123
OR 811

PROJECT ENGINEER: JASON STULTS
SQUAD LEADER: CLARE CURTIN
DESIGNERS: XINYU SUN & ABIMBOLA OLAJOYEGBE
PHONE NUMBER: (217) 465-4181
CONTRACT NO. 70E39

GROSS LENGTH = 48,792.00 FT. = 9.241 MILE
NET LENGTH = 48,792.00 FT. = 9.241 MILE

STATE OF ILLINOIS
DEPARTMENT OF TRANSPORTATION

SUBMITTED 03/05 2020
Kennel A. Barnett
REGIONAL ENGINEER

May 8, 2020 *Jason Stults*
ENGINEER OF DESIGN AND ENVIRONMENT

May 8, 2020 *James J. ...*
DIRECTOR OF HIGHWAYS PROJECT IMPLEMENTATION

PRINTED BY THE AUTHORITY
OF THE STATE OF ILLINOIS

INDEX OF SHEETS

SHEET NO.	DESCRIPTION
1	COVER SHEET
2	INDEX OF SHEETS
2	HIGHWAY STANDARDS
2	GENERAL NOTES
3	LOCATION MAPS
5-Apr	SUMMARY OF QUANTITIES
6 - 9	TYPICAL CROSS SECTION
10 - 12	SCHEDULE OF QUANTITIES
13 - 14	CLASS A PATCHING (SPECIAL)
15	TEMPORARY RUMBLE STRIP

LIST OF HIGHWAY STANDARDS

STANDARD NO.	DESCRIPTION
000001-07	STANDARDS SYMBOLS, ABBREVIATIONS, & PATTERNS
001001-02	AREAS OF REINFORCEMENT BARS
001006	DECIMAL OF AN INCH AND OF A FOOT
420001-09	PAVEMENT JOINTS
701101-05	OFF ROAD OPERATIONS, MULTILANE 15' TO 24" FROM PAVEMENT EDGE
701106-02	OFF ROAD OPERATIONS, MULTILANE, MORE THAN 15' AWAY
701400-09	APPROACH TO LANE CLOSURE, FREEWAY/EXPRESSWAY
701401-12	LANE CLOSURE, FREEWAY / EXPRESSWAY
701411-09	LANE CLOSURE, MULTILANE, AT ENTRANCE OR EXIT RAMP, FOR SPEEDS ≥ 45 MPH
701428-01	TRAFFIC CONTROL SETUP AND REMOVAL FREEWAY/EXPRESSWAY
701901-08	TRAFFIC CONTROL DEVICES

GENERAL NOTES

GN 105.07C
 EXISTING STATE-OWNED AND MAINTAINED UNDERGROUND UTILITY FACILITIES EXIST WITHIN THE ROW. THE DEPARTMENT IS NOT A MEMBER OF JULIE AND DOES NOT LOCATE IT'S OWN FACILITIES. THE CONTRACTOR SHALL BE RESPONSIBLE AT THEIR OWN EXPENSE FOR SECURING AN APPROVED LOCATING FIRM TO LOCATE ALL EXISTING IDOT UNDERGROUND FACILITIES PRIOR TO COMMENCING ANY EXCAVATION, PER THE REQUIREMENTS OF ARTICLE 803 OF THE STANDARD SPECIFICATIONS. UTILITY LOCATES MAY ALSO BE REQUIRED OUTSIDE THE PROJECT LIMITS, SUCH AS FOR TRAFFIC CONTROL SIGNING AND OTHER ITEMS. THE CONTRACTOR MAY OBTAIN, ON REQUEST, PLANS OF EXISTING ELECTRICAL FACILITIES FROM THE DEPARTMENT. FOR FURTHER INFORMATION, THE CONTRACTOR MAY CONTACT THE DISTRICT TRAFFIC OPERATIONS ENGINEER, GARY SIMS, AT 217-251-4859.

G.N.- 442B - PATCHING SCHEDULES
 THE PATCHING SCHEDULES INCLUDED IN THE PLANS REPRESENT THE BEST INFORMATION AVAILABLE AT THE TIME OF COMPLETION OF THE PLANS FOR LETTING. VARIATIONS IN LOCATION AND SIZES OF THE FULL-DEPTH AND PARTIAL-DEPTH PATCHES MAY OCCUR.

G.N.-780 (SPL)
 PAVEMENT MARKING FOR THIS PROJECT IS TO BE PERFORMED BY OTHERS, FIELD PERSONNEL SHALL NOTIFY GARY SIMS, DISTRICT 5 TRAFFIC OPERATIONS ENGINEER AT (217) 465-4181 WHEN THE PROJECT IS COMPLETE AND READY FOR PAVEMENT MARKINGS.

COMMITMENTS

THERE ARE NO COMMITMENTS FOR THIS PROJECT

MODEL: s:\MODEL\MA\MS
 FILE NAME: s:\pub\mcom\mdata\illinois\gov\PWD\DOT\Documents\DOT_Offices\District_5\Projects\D570E39\CaddData\CAD\SheetSet\D570E39-CH-Centletcd.dgn

USER NAME = CurtinCB	DESIGNED -	REVISED -
	DRAWN -	REVISED -
PLOT SCALE = 40.0000 ' / in.	CHECKED -	REVISED -
PLOT DATE = 3/4/2020	DATE -	REVISED -

STATE OF ILLINOIS
 DEPARTMENT OF TRANSPORTATION

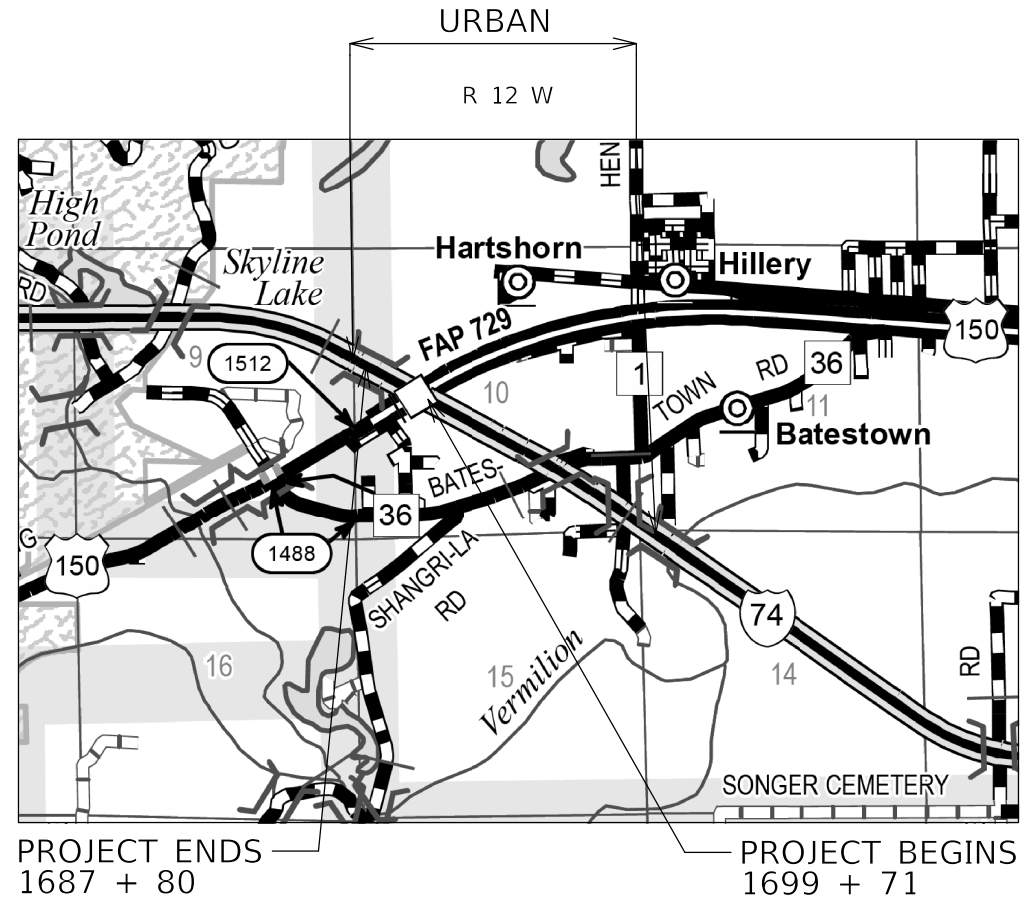
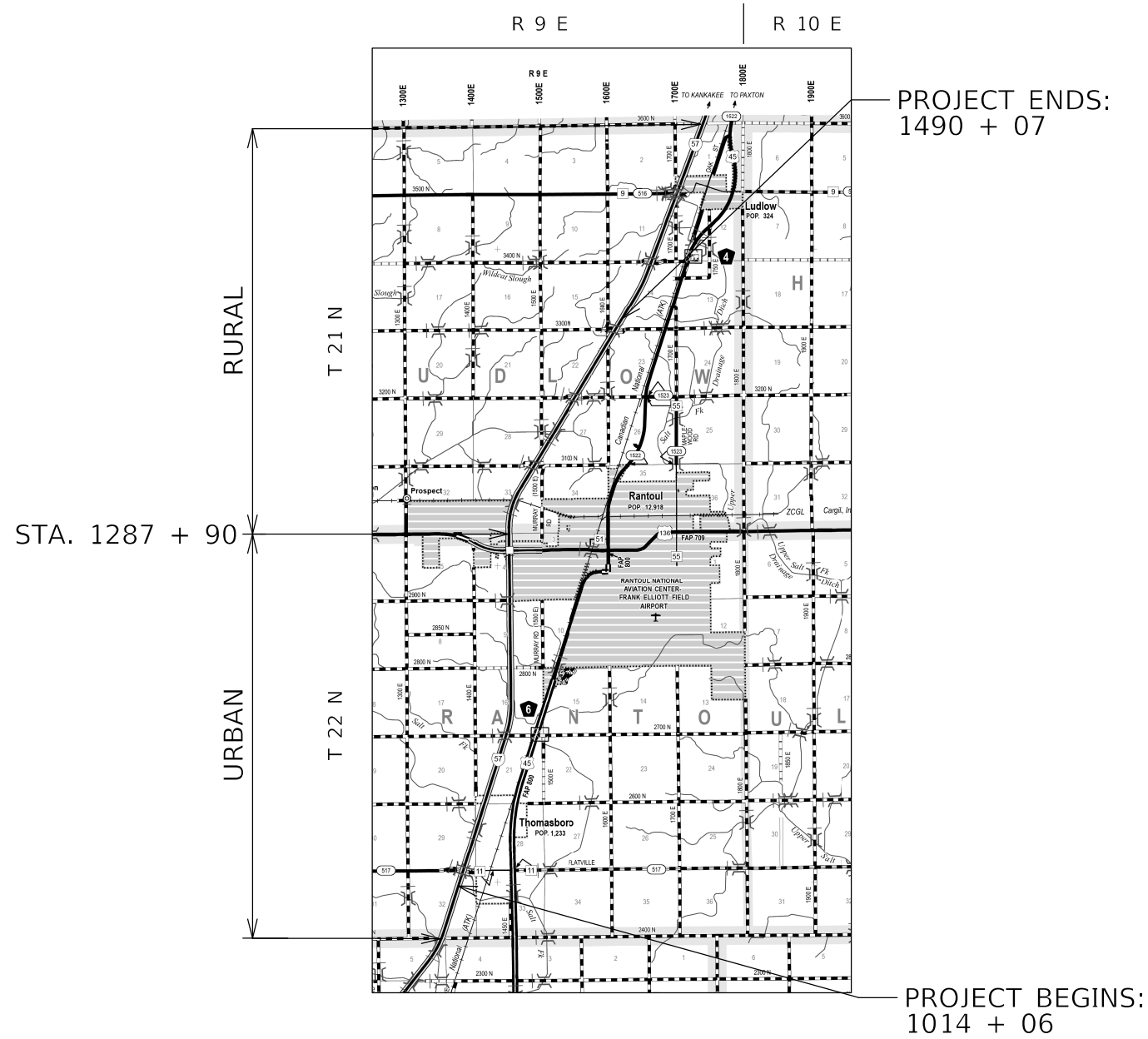
INDEX OF SHEETS, LIST OF
 HIGHWAY STANDARDS & GENERAL NOTES

SCALE: SHEET 1 OF 1 SHEETS STA. TO STA.

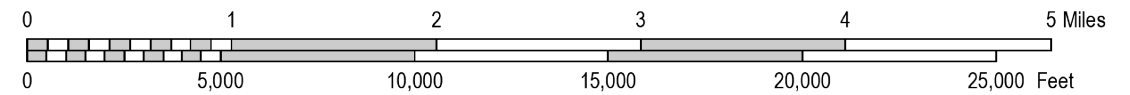
F.A.J RTE.	SECTION	COUNTY	TOTAL SHEETS	SHEET NO.
57&74	D5 CM PATCH 2020-4	*	15	2
CONTRACT NO. 70E39				
ILLINOIS FED. AID PROJECT				

CHAMPAIGN COUNTY

VERMILION COUNTY



LENGTH = 47,601.00 FT. = 9.015 MILE



LENGTH = 1,191.00 FT. = 0.226 MILE

MODEL: \\MODEL\NAME
 FILE: \\NAME: \\pub\m\com\ma\data\illinois\pwr\WIDOT\Documents\DOT_Offices\District_5\Projects\0570E39\CADD\data\CAD\sheet\0570E39-01-loc\map.dgn

USER NAME = CurtinCB	DESIGNED -	REVISED -
	DRAWN -	REVISED -
PLOT SCALE = 40.0000 ' / in.	CHECKED -	REVISED -
PLOT DATE = 3/4/2020	DATE -	REVISED -

**STATE OF ILLINOIS
DEPARTMENT OF TRANSPORTATION**

LOCATION MAPS

SCALE: SHEET 1 OF 1 SHEETS STA. TO STA.

F.A.I. RTE.	SECTION	COUNTY	TOTAL SHEETS	SHEET NO.
57&74	D5 CM PATCH 2020-4	*	13	3
* CHAMPAIGN & VERMILION			CONTRACT NO. 70E39	
ILLINOIS FED. AID PROJECT				

SUMMARY OF QUANTITIES

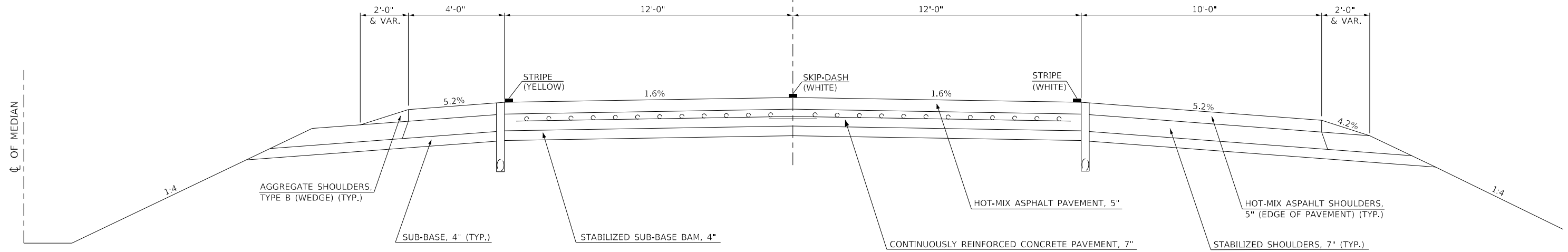
LOCATION OF WORK:	FAI 57	FAI 57	FAI 74
	RURAL	URBAN	URBAN
	INTERSTATE	INTERSTATE	INTERSTATE
	STA. 1287+90 TO STA. 1490+07	STA. 1014+06 TO STA. 1287+90	STA. 1687+80 TO STA. 1699+71
	CHAMPAIGN COUNTY	CHAMPAIGN COUNTY	VERMILION COUNTY
FUNDING BREAKOUT:	100% STATE	100% STATE	100% STATE
CONSTRUCTION TYPE CODE:	0006	0006	0006

CODE NO.	ITEM	UNIT	TOTAL QUANTITY	QUANTITY	QUANTITY	QUANTITY
44213000	PATCHING REINFORCEMENT	SQ YD	598.0	48.0	411.0	139.0
44213200	SAW CUTS	FOOT	2142.0	192.0	1478.0	472.0
44213204	TIE BARS 3/4"	EACH	1185.0	110.0	819.0	256.0
67100100	MOBILIZATION	L SUM	1.0	0.1	0.7	0.2
70100420	TRAFFIC CONTROL AND PROTECTION, STANDARD 701411	EACH	8.0	0.0	6.0	2.0
70100800	TRAFFIC CONTROL AND PROTECTION, STANDARD 701401	L SUM	1.0	0.1	0.7	0.2
70103815	TRAFFIC CONTROL SURVEILLANCE	CAL DAY	12.0	1.0	8.0	3.0
70107025	CHANGEABLE MESSAGE SIGN	CAL DAY	30.0	5.0	17.0	8.0
X1700052	CLASS A PATCHES, TYPE II, 12 INCH (SPECIAL)	SQ YD	283.0	32.0	251.0	0.0
X1700079	CLASS A PATCHES, TYPE III, 12 INCH (SPECIAL)	SQ YD	52.0	0.0	52.0	0.0
X1700080	CLASS A PATCHES, TYPE IV, 12 INCH (SPECIAL)	SQ YD	108.0	0.0	108.0	0.0
X1700081	CLASS A PATCHES, TYPE II, 16 INCH (SPECIAL)	SQ YD	102.0	16.0	0.0	86.0
X1700082	CLASS A PATCHES, TYPE IV, 16 INCH (SPECIAL)	SQ YD	54.0	0.0	0.0	54.0
* DENOTES SPECIALTY ITEM						

MODEL: \\MODEL\NAMES
 FILE: \\MODEL\57&74\CHAMPAIGN\Documents\DOT Office\Drawings\570E39\CADDData\CADDsheets\0570E39\ch-500.dgn

1 EXISTING TYPICAL CROSS SECTION FAI 57

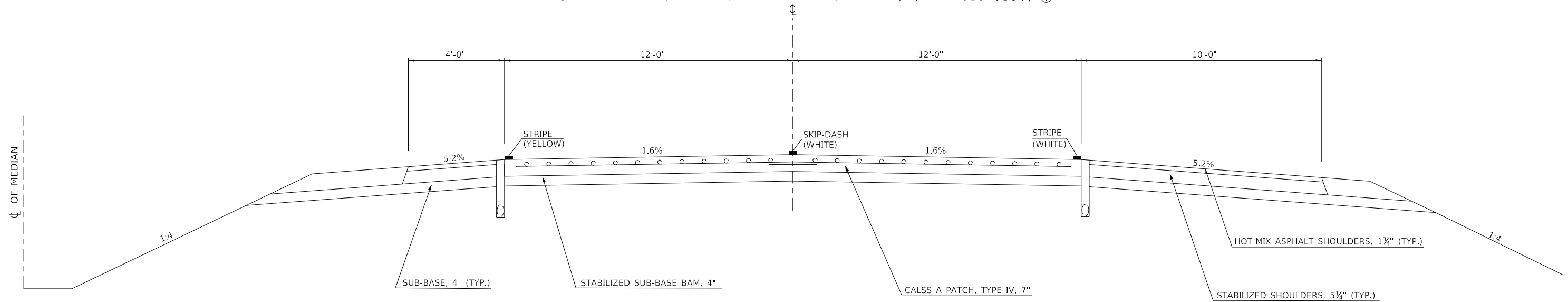
STATION	TO	STATION	
1014+06.00	(NB&SB)	1015+88.00	(NB&SB) ②
② 1017+69.00	(SB)	1127+63.00	(SB) ②
② 1017+69.00	(NB)	1127+91.00	(NB) ②
② 1129+43.00	(SB)	1234+55.00	(SB) ②
② 1129+71.00	(NB)	1234+55.00	(NB) ②
② 1236+35.00	(SB)	1270+24.74	(SB) ③
② 1236+35.00	(NB)	1270+24.74	(NB) ④



2 EXISTING TYPICAL CROSS SECTION FAI 57

STATION	TO	STATION	
① 1015+88.00	(NB & SB)	1017+69.00	(NB & SB) (S.N. 010-0156) ①
① 1127+63.00	(SB)	1129+43.00	(SB) (S.N. 010-0165) ①
① 1127+91.00	(NB)	1129+71.00	(NB) (S.N. 010-0165) ①
① 1234+55.00	(NB & SB)	1236+35.00	(NB & SB) (S.N. 010-0164) ①

EXISTING CONCRETE PATCH UNDER BRIDGE



MODEL: \\MODEL\NAME: FILE: \\NAME: ...

USER NAME = CurtinCB	DESIGNED -	REVISED -
	DRAWN -	REVISED -
PLOT SCALE = 40.0000' / in.	CHECKED -	REVISED -
PLOT DATE = 3/4/2020	DATE -	REVISED -

STATE OF ILLINOIS
DEPARTMENT OF TRANSPORTATION

EXISTING TYPICAL CROSS SECTIONS

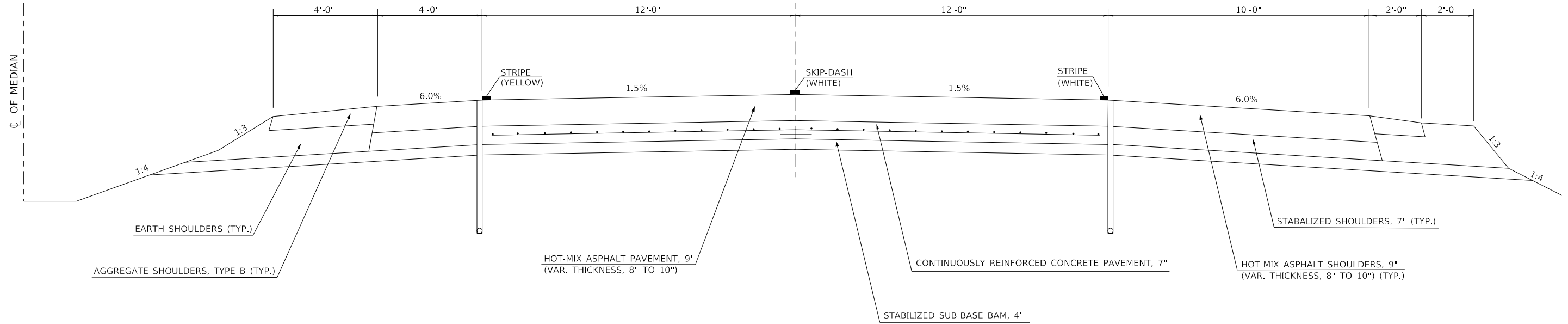
SCALE: SHEET 1 OF 4 SHEETS STA. TO STA.

F.A.I. RTE.	SECTION	COUNTY	TOTAL SHEETS	SHEET NO.
57&74	D5 CM PATCH 2020-4	*	15	6
* CHAMPAIGN & VERMILION		CONTRACT NO. 70E39		
ILLINOIS FED. AID PROJECT				

3 EXISTING TYPICAL CROSS SECTION FAI 57

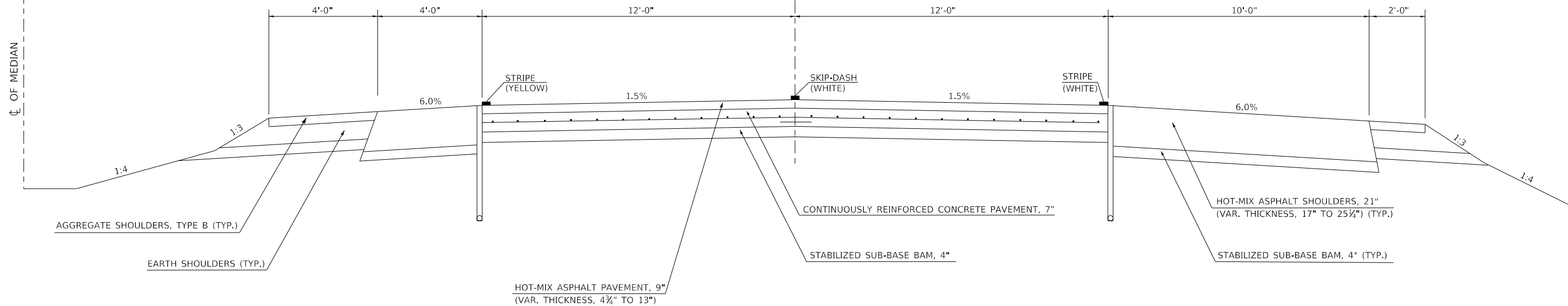
STATION	TO	STATION
④ 1272+95.98 (NB)		1274+42.94 (NB) ④
⑤ 1276+42.86 (NB)		1296+95.45 (NB) ⑤
② 1270+24.74 (SB)		1274+49.09 (SB) ②
③ 1276+49.01 (SB)		1277+55.76 (SB) ③
④ 1289+18.11 (SB)		1296+95.45 (SB) ④

* BRIDGE OMISSION
 NB STA. 1274+42.94 TO 1276+42.86 (S.N. 010-0013)
 SB STA. 1274+49.09 TO 1276+49.01 (S.N. 010-0012)



4 EXISTING TYPICAL CROSS SECTION FAI 57

STATION	TO	STATION	STATION	TO	STATION
② 1270+24.74 (NB)		1272+95.98 (NB) ③	④ 1308+15.60 (NB)		1314+67.36 (NB) ⑤
⑤ 1306+28.42 (NB)		1308+15.60 (NB) ④	⑤ 1317+07.36 (NB)		1320+16.32 (NB) ④
④ 1320+16.32 (NB)		1321+36.77 (NB) ⑤	④ 1311+29.34 (SB)		1314+43.67 (SB) ⑤
③ 1277+55.76 (SB)		1289+18.11 (SB) ③	⑤ 1316+78.31 (SB)		1323+29.41 (SB) ④
⑤ 1310+21.22 (SB)		1311+29.34 (SB) ④			
④ 1323+29.41 (SB)		1325+17.36 (SB) ⑤			



MODEL: \\MODEL\NAME
 FILE: \\NAME: \\path\to\file.dwg
 PROJECT: \\PROJECT\NAME
 OFFICE: \\OFFICE\NAME
 DATE: 3/4/2020

USER NAME = CurtinCB	DESIGNED -	REVISED -
	DRAWN -	REVISED -
PLOT SCALE = 40,0000' / in.	CHECKED -	REVISED -
PLOT DATE = 3/4/2020	DATE -	REVISED -

STATE OF ILLINOIS
 DEPARTMENT OF TRANSPORTATION

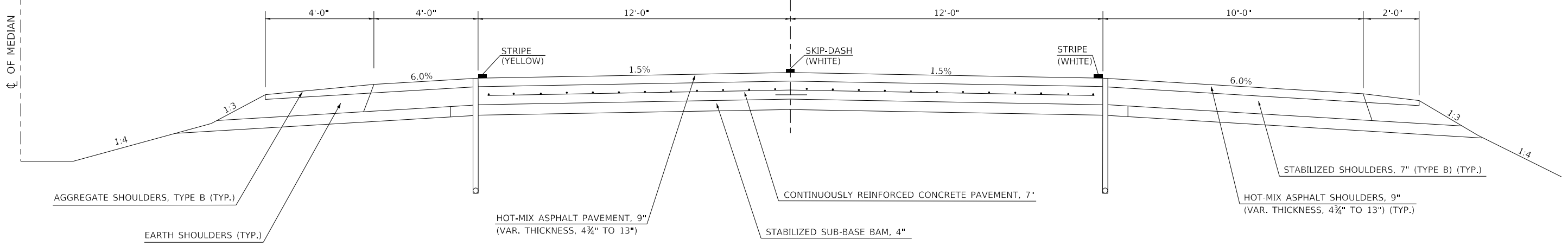
EXISTING TYPICAL CROSS SECTIONS			
SCALE:	SHEET 2 OF 4 SHEETS	STA.	TO STA.

F.A.I. RTE.	SECTION	COUNTY	TOTAL SHEETS	SHEET NO.
57&74	D5 CM PATCH 2020-4	*	15	7
* CHAMPAIGN & VERMILION		CONTRACT NO. 70E39		
ILLINOIS FED. AID PROJECT				

5 EXISTING TYPICAL CROSS SECTION FAI 57

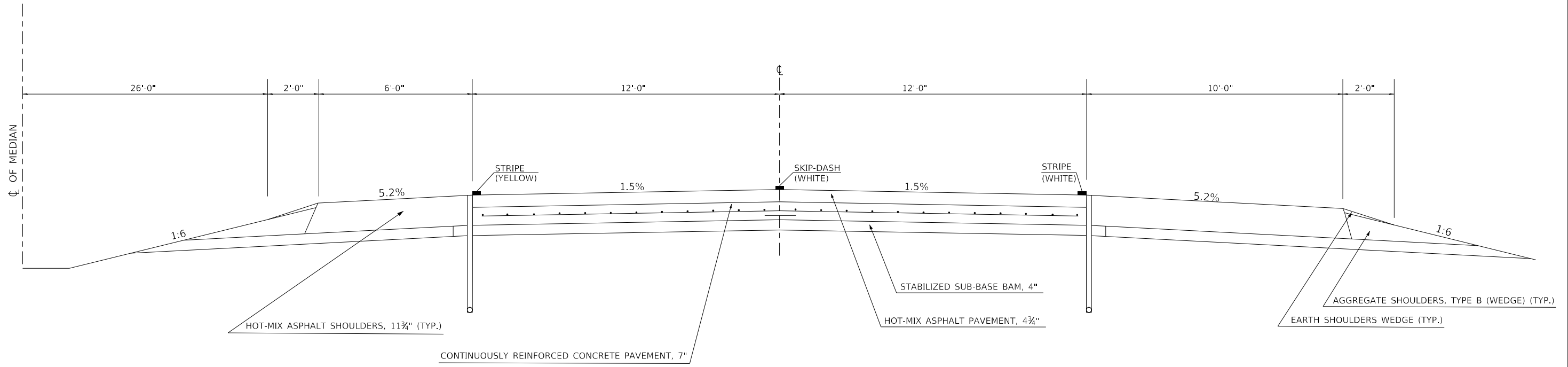
* BRIDGE OMISSION
 NB STA. 1315+08.34 TO 1316+65.58 (S.N. 010-0191)
 SB STA. 1314+85.15 TO 1316+37.26 (S.N. 010-0192)

STATION	TO	STATION
③ 1296+95.45 (NB)		1306+28.42 (NB) ④
④ 1314+67.36 (NB)		1315+08.34 (NB) *
* 1316+65.58 (NB)		1317+07.36 (NB) ④
④ 1321+36.77 (NB)		1336+77.99 (NB) ⑥
③ 1296+95.45 (SB)		1310+21.22 (SB) ④
④ 1314+43.67 (SB)		1314+85.15 (SB) *
* 1316+37.26 (SB)		1316+78.31 (SB) ④
④ 1325+17.36 (SB)		1336+77.99 (SB) ⑥



6 EXISTING TYPICAL CROSS SECTION FAI 57

STATION	TO	STATION
⑤ 1336+77.99 (NB&SB)		1490+07.00 (NB&SB)



MODEL: \\MODEL\NAME: FILE: \\NAME: \\path\to\file.dgn
 PROJECT: \\PROJECT\NAME: \\path\to\file.dgn
 SHEET: \\SHEET\NAME: \\path\to\file.dgn

USER NAME = CurtinCB	DESIGNED -	REVISED -
	DRAWN -	REVISED -
PLOT SCALE = 40.0000' / in.	CHECKED -	REVISED -
PLOT DATE = 3/4/2020	DATE -	REVISED -

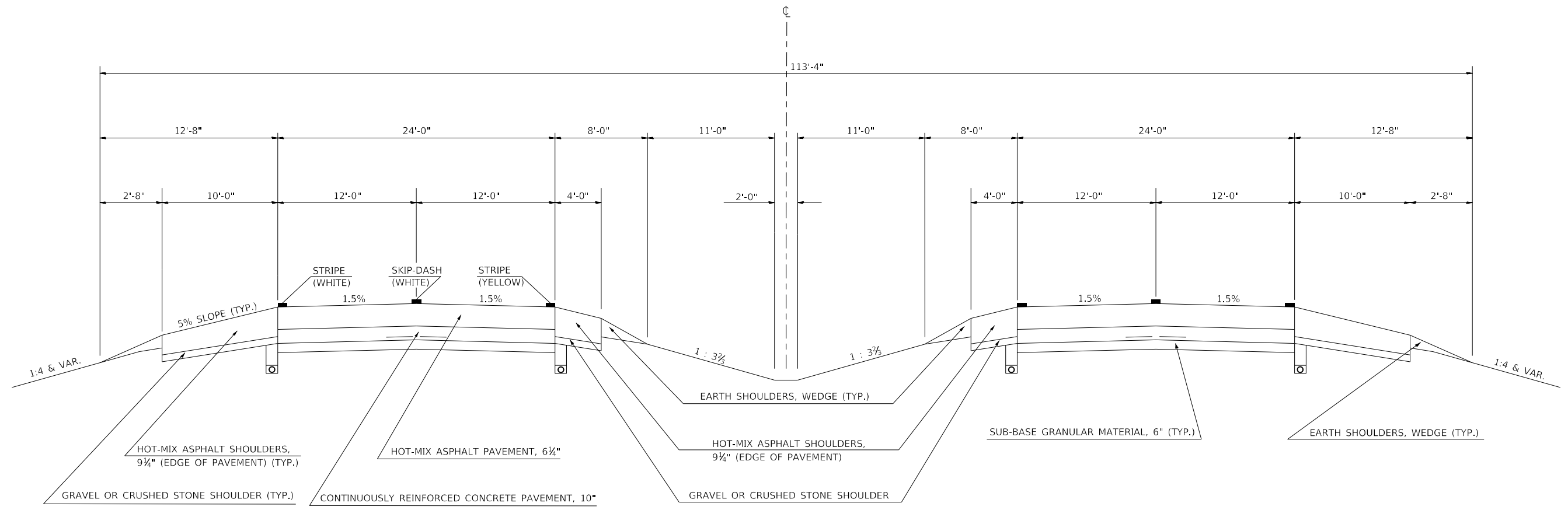
STATE OF ILLINOIS
 DEPARTMENT OF TRANSPORTATION

EXISTING TYPICAL CROSS SECTIONS			
SCALE:	SHEET 3	OF 4	SHEETS
	STA.		TO STA.

F.A.I. RTE.	SECTION	COUNTY	TOTAL SHEETS	SHEET NO.
57&74	D5 CM PATCH 2020-4	*	15	8
* CHAMPAIGN & VERMILION		CONTRACT NO. 70E39		
ILLINOIS FED. AID PROJECT				

7 EXISTING TYPICAL CROSS SECTION FAI 74

STATION IO STATION
 1687+80.00 (EB&WB) 1699+71.00 (EB&WB)



MODEL: \\MODEL\NAME
 FILE: \\NAME: P:\p\illinois\mtda\illinois.gov\PWIDOT\Documents\DOT_Offices\District_5\Projects\0570E39\CADDData\CAD\Sheet\0570E39-shc-Typical.dgn

USER NAME = CurtinCB	DESIGNED -	REVISED -
	DRAWN -	REVISED -
PLOT SCALE = 40.0000' / in.	CHECKED -	REVISED -
PLOT DATE = 3/4/2020	DATE -	REVISED -

**STATE OF ILLINOIS
 DEPARTMENT OF TRANSPORTATION**

EXISTING TYPICAL CROSS SECTIONS

SCALE: SHEET 4 OF 4 SHEETS STA. TO STA.

F.A.I. RTE.	SECTION	COUNTY	TOTAL SHEETS	SHEET NO.
57&74	D5 CM PATCH 2020-4	*	15	9
* CHAMPAIGN & VERMILION			CONTRACT NO. 70E39	
ILLINOIS FED. AID PROJECT				

SCHEDULE OF QUANTITIES

CHAMPAIGN COUNTY

I - 57 NB CLASS A PATCHES, 12 INCH (SPECIAL)							CLASS A PATCHES, TYPE II, 12 INCH SPECIAL (SQ YD)	CLASS A PATCHES, TYPE III, 12 INCH SPECIAL (SQ YD)	CLASS A PATCHES, TYPE IV, 12 INCH SPECIAL (SQ YD)	SAW CUTS (FT)	TIE BARS 3/4" (EACH)		PATCHING REINFORCEMENT (SQ. YD)	
APPROX. STATION	DIR	LANE	LENGTH	WIDTH	TYPICAL	SQ YD	X1700052	X1700079	X1700080	44213200	44213204		44213000	
										TRANVERSE		LONGITUDINAL		
							URBAN	URBAN	URBAN	URBAN	URBAN	URBAN	URBAN	
1022+09	NB	DL	6	12	1	8.00	8.0			36.0	22.0		8.0	
1022+40	NB	DL	6	12	1	8.00	8.0			36.0	22.0		8.0	
1032+29	NB	DL	6	12	1	8.00	8.0			36.0	22.0		8.0	
1037+36	NB	DL	6	12	1	8.00	8.0			36.0	22.0		8.0	
1048+98	NB	DL	6	12	1	8.00	8.0			36.0	22.0		8.0	
1056+11	NB	DL	6	12	1	8.00	8.0			36.0	22.0		8.0	
1067+95	NB	DL	6	12	1	8.00	8.0			36.0	22.0		8.0	
1075+73	NB	DL	6	12	1	8.00	8.0			36.0	22.0		8.0	
1084+85	NB	DL	6	12	1	8.00	8.0			36.0	22.0		8.0	
1113+35	NB	DL	15	12	1	20.00		20.0		54.0	22.0		20.0	
1116+05	NB	DL	6	12	1	8.00	8.0			36.0	22.0		8.0	
1118+93	NB	DL	6	12	1	8.00	8.0			36.0	22.0		8.0	
1155+63	NB	DL	8	12	1	10.67	10.7			40.0	22.0		10.7	
1158+80	NB	DL	6	12	1	8.00	8.0			36.0	22.0		8.0	
1170+19	NB	DL	6	12	1	8.00	8.0			36.0	22.0		8.0	
1195+31	NB	DL	6	12	1	8.00	8.0			36.0	22.0		8.0	
1195+75	NB	DL	8	12	1	10.67	10.7			40.0	22.0		10.7	
1207+39	NB	DL	6	12	1	8.00	8.0			36.0	22.0		8.0	
1207+39	NB	PL	8	12	1	10.67	10.7			40.0	22.0		10.7	
1209+68	NB	PL	12	12	1	16.00		16.0		48.0	22.0		16.0	
1209+74	NB	DL	6	12	1	8.00	8.0			36.0	22.0		8.0	
1219+85	NB	DL	6	12	1	8.00	8.0			36.0	22.0		8.0	
1222+81	NB	DL	6	12	1	8.00	8.0			36.0	22.0		8.0	
1237+13	NB	DL	20	12	1	26.67			26.7	64.0	22.0	7.0	26.7	
1237+13	NB	PL	20	12	1	26.67			26.7	64.0	22.0	7.0	26.7	
1237+82	NB	DL	6	12	1	8.00	8.0			36.0	22.0		8.0	
1242+14	NB	DL	6	12	1	8.00	8.0			36.0	22.0		8.0	
1250+45	NB	DL	6	12	1	8.00	8.0			36.0	22.0		8.0	
1250+45	NB	PL	6	12	1	8.00	8.0			36.0	22.0		8.0	
SUBTOTAL:							297.3	208.0	36.0	53.3	1142.0	638.0	14.0	297.3
CHAMPAIGN COUNTY - URBAN SUBTOTAL:							298.0	208.0	36.0	54.0	1142.0	652.0		298.0

Replace old patch at 1207 + 39

I - 57 NB CLASS A PATCHES, 16 INCH (SPECIAL)								CLASS A PATCHES, TYPE II, 16 INCH SPECIAL (SQ YD)	SAW CUTS (FT)	TIE BARS 3/4" (EACH)	PATCHING REINFORCEMENT (SQ. YD)
APPROX. STATION	DIR	LANE	LENGTH	WIDTH	TYPICAL	SQ YD	X1700081	44213200	44213204	44213000	
								RURAL		RURAL	RURAL
1330+00	NB	DL	6	12	5	8.00	8.0	8.0	36.0	22.0	8.0
SUBTOTAL:							8.0	8.0	36.0	22.0	8.0
CHAMPAIGN COUNTY - RURAL SUBTOTAL:							8.0	8.0	36.0	22.0	8.0

MODEL: I:\MODEL\NAMES FILE: N:\M\57 NB CHAMPAIGN COUNTY\PROJECTS\DOT OFFICES\DOT\57 NB CHAMPAIGN COUNTY\CADD\DATA\CAD\PATCHES\DOT\57 NB CHAMPAIGN COUNTY\Schedule.dgn

USER NAME = CurtinCB	DESIGNED -	REVISED -
	DRAWN -	REVISED -
PLOT SCALE = 40.0000 ' / in.	CHECKED -	REVISED -
PLOT DATE = 3/4/2020	DATE -	REVISED -

**STATE OF ILLINOIS
DEPARTMENT OF TRANSPORTATION**

SCHEDULE OF QUANTITIES

SCALE: SHEET 1 OF 3 SHEETS STA. TO STA.

F.A.I. RTE.	SECTION	COUNTY	TOTAL SHEETS	SHEET NO.
57&74	D5 CM PATCH 2020-4	*	15	10
CONTRACT NO. 70E39				
ILLINOIS FED. AID PROJECT				

SCHEDULE OF QUANTITIES

CHAMPAIGN COUNTY

I - 57 SB CLASS A PATCHES, 12 INCH (SPECIAL)							CLASS A PATCHES, TYPE II, 12 INCH SPECIAL (SQ YD)	CLASS A PATCHES, TYPE III, 12 INCH SPECIAL (SQ YD)	CLASS A PATCHES, TYPE IV, 12 INCH SPECIAL (SQ YD)	SAW CUTS (FT)	TIE BARS 3/4" (EACH)			PATCHING REINFORCEMENT (SQ. YD)				
APPROX. STATION	DIR	LANE	LENGTH	WIDTH	TYPICAL	SQ YD	X1700052	X1700079	X1700080	44213200		44213204		44213000				
							URBAN	RURAL	URBAN	URBAN	URBAN	RURAL	URBAN	RURAL	URBAN	RURAL		
1489+07	SB	DL	8	12	6	10.67		10.7			40.0		22.0			10.7		
1471+00	SB	DL	8	12	6	10.67					40.0		22.0			10.7		
1455+00	SB	DL	8	12	6	10.67		10.7			40.0		22.0			10.7		
1225+80	SB	DL	12	12	1	16.00			16.0	48.0		22.0				16.0		
1225+41	SB	DL	6	12	1	8.00	8.0			36.0		22.0				8.0		
1203+33	SB	DL	6	12	1	8.00	8.0			36.0		22.0				8.0		
1158+31	SB	DL	6	12	1	8.00	8.0			36.0		22.0				8.0		
1123+65	SB	DL	6	12	1	8.00	8.0			36.0		22.0				8.0		
1112+00	SB	DL	8	12	1	10.67	10.7			40.0		22.0				10.7		
1086+66	SB	DL	40	12	1	53.33			53.3	104.0		22.0		13.0		53.3		
TOTAL:							144.0	42.7	32.0	16.0	53.3	336.0	120.0	154.0	66.0	13.0	112.0	32.0
CHAMPAIGN COUNTY - RURAL SUBTOTAL:							32.0		32.0			120.0			66.0			32.0
CHAMPAIGN COUNTY - URBAN SUBTOTAL:							113.0		43.0	16.0	54.0	336.0			167.0			113.0

I - 57 SB CLASS A PATCHES, 16 INCH (SPECIAL)							CLASS A PATCHES, TYPE II, 16 INCH SPECIAL (SQ YD)	SAW CUTS (FT)	TIE BARS 3/4" (EACH)	PATCHING REINFORCEMENT (SQ. YD)
APPROX. STATION	DIR	LANE	LENGTH	WIDTH	TYPICAL	SQ YD	X1700081	44213200	44213204	44213000
							RURAL	RURAL	TRANVERSE RURAL	RURAL
1288+20	SB	DL	6	12	4	8.00	8.0	36.0	22.0	8.0
SUBTOTAL:							8.0	36.0	22.0	8.0
CHAMPAIGN COUNTY - RURAL SUBTOTAL:							8.0	36.0	22.0	8.0

MODEL: \\MODEL\MATF
FILE: \\matf\p\p\champaign\matf\DOT\Documents\DOT\Office\Dir\ct\5\Projects\0570E39\CADDData\CAD\Sheet\0570E39-Sub-Schedule.dgn

USER NAME = CurtinCB	DESIGNED -	REVISED -
	DRAWN -	REVISED -
PLOT SCALE = 40.0000 ' / in.	CHECKED -	REVISED -
PLOT DATE = 3/4/2020	DATE -	REVISED -

**STATE OF ILLINOIS
DEPARTMENT OF TRANSPORTATION**

SCHEDULE OF QUANTITIES			
SCALE:	SHEET 2	OF 3	SHEETS
	STA.		TO STA.

F.A.I. RTE.	SECTION	COUNTY	TOTAL SHEETS	SHEET NO.
57&74	D5 CM PATCH 2020-4	*	15	11
CONTRACT NO. 70E39				
ILLINOIS FED. AID PROJECT				

SCHEDULE OF QUANTITIES

VERMILION COUNTY

I - 74 WB CLASS A PATCHES, 16 INCH (SPECIAL)							CLASS A PATCHES, TYPE II, 16 INCH SPECIAL (SQ YD)	CLASS A PATCHES, TYPE IV, 16 INCH SPECIAL (SQ YD)	SAW CUTS (FT)	TIE BARS 3/4" (EACH)		PATCHING REINFORCEMENT (SQ. YD)	
APPROX. STATION	DIR	LANE	LENGTH	WIDTH	TYPICAL	SQ YD	X1700081	X1700082	44213200	44213204		44213000	
										TRANVERSE	LONGITUDINAL		
							URBAN	URBAN	URBAN	URBAN	URBAN	URBAN	
1697+72	WB	DL	8	12	7	10.67	10.7		40.0	22.0		10.7	
1696+82	WB	DL	6	12	7	8.00	8.0		36.0	22.0		8.0	
1695+82	WB	DL	8	12	7	10.67	10.7		40.0	22.0		10.7	
1695+29	WB	DL	8	12	7	10.67	10.7		40.0	22.0		10.7	
1692+94	WB	DL	6	12	7	8.00	8.0		36.0	22.0		8.0	
1691+80	WB	DL	20	12	7	26.67		26.7	64.0	22.0	7.0	26.7	
1691+44	WB	DL	20	12	7	26.67		26.7	64.0	22.0	7.0	26.7	
1691+10	WB	DL	6	12	7	8.00	8.0		36.0	22.0		8.0	
1690+70	WB	DL	6	12	7	8.00	8.0		36.0	22.0		8.0	
1689+17	WB	DL	8	12	7	10.67	10.7		40.0	22.0		10.7	
1688+80	WB	DL	8	12	7	10.67	10.7		40.0	22.0		10.7	
SUBTOTAL:							138.7	85.3	53.3	472.0	242.0	14.0	138.7
VERMILION COUNTY - URBAN SUBTOTAL:							140.0	86.0	54.0	472.0	256.0		139.0

SUMMARY

	CLASS A PATCHES, TYPE II, 12 INCH SPECIAL (SQ YD)	CLASS A PATCHES, TYPE III, 12 INCH SPECIAL (SQ YD)	CLASS A PATCHES, TYPE IV, 12 INCH SPECIAL (SQ YD)	CLASS A PATCHES, TYPE II, 16 INCH SPECIAL (SQ YD)	CLASS A PATCHES, TYPE IV, 16 INCH SPECIAL (SQ YD)	SAW CUTS (FT)	TIE BARS 3/4" (EACH)	PATCHING REINFORCEMENT (SQ. YD)	TEMPORARY RUMBLE STRIPS SPECIAL (EACH)
	X1700052	X1700079	X1700080	X1700081	X1700082	44213200	44213204	44213000	X2700001
CHAMPAIGN COUNTY - RURAL:	32.0			16.0		192.0	110.0	48.0	16.0
CHAMPAIGN COUNTY - URBAN:	251.0	52.0	108.0			1478.0	819.0	411.0	16.0
VERMILION COUNTY - URBAN:				86.0	54.0	472.0	256.0	139.0	8.0
TOTAL:	283.0	52.0	108.0	102.0	54.0	2142.0	1185.0	598.0	40.0

CHANGEABLE MESSAGE SIGNS

LOCATION	RURAL/URBAN	BEFORE CONSTRUCTION (CAL DAY)	DURING CONSTRUCTION (CAL DAY)	CHANGEABLE MESSAGE SIGNS (CAL DAY)
				X2700001
I-57 NB - NORTHERN SETUP	RURAL	0.0	1.0	1.0
I-57 NB - SOUTHERN SETUP	URBAN	3.0	10.0	13.0
I-57 SB - NORTHERN SETUP	RURAL	3.0	1.0	4.0
I-57 SB - SOUTHERN SETUP	URBAN	0.0	4.0	4.0
I-74 WB SETUP	URBAN	3.0	5.0	8.0
TOTAL:				30.0

TEMPORARY RUMBLE STRIPS

SETUP	RURAL/URBAN	TEMPORARY RUMBLE STRIPS (EACH)
		X2700001
I-57 NB - NORTHERN SETUP	RURAL	8.0
I-57 NB - SOUTHERN SETUP	URBAN	8.0
I-57 SB - NORTHERN SETUP	RURAL	8.0
I-57 SB - SOUTHERN SETUP	URBAN	8.0
I-74 WB SETUP	URBAN	8.0
TOTAL		40.0

MODEL: \\MODEL\NAMES
FILE: \\MODEL\570E39\VERMILION\Documents\DOT - Office\Drawings - 570E39\CADDData\CAD\patches\0570E39\ch-Schedule.dgn

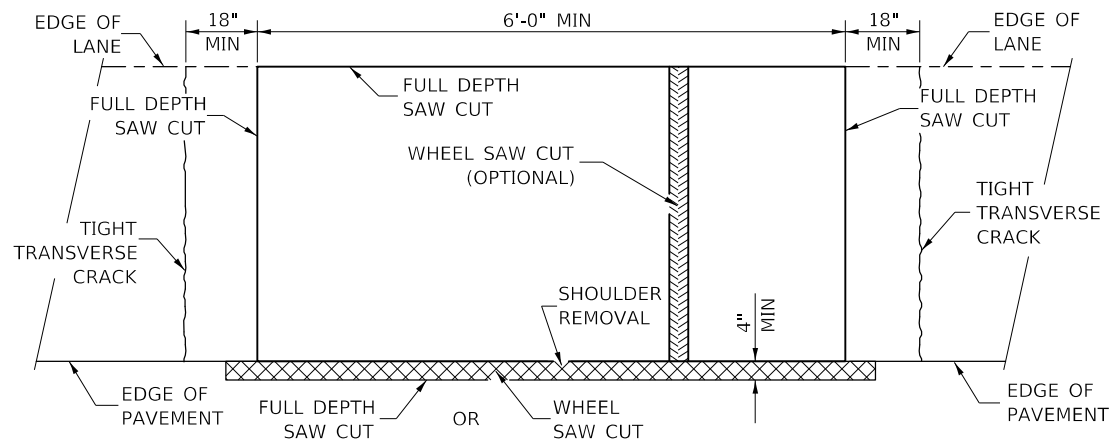
USER NAME = CurtinCB	DESIGNED -	REVISED -
	DRAWN -	REVISED -
PLOT SCALE = 40.0000 ' / in.	CHECKED -	REVISED -
PLOT DATE = 3/4/2020	DATE -	REVISED -

**STATE OF ILLINOIS
DEPARTMENT OF TRANSPORTATION**

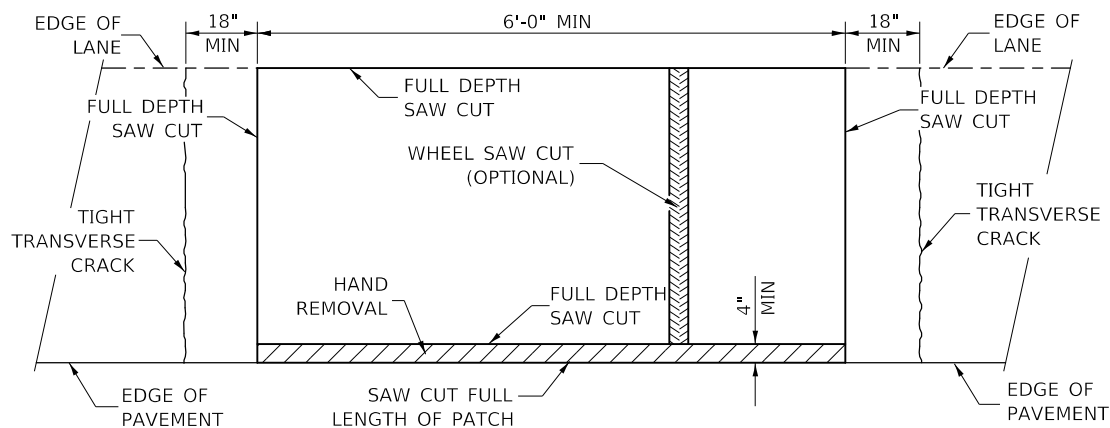
SCHEDULE OF QUANTITIES

SCALE: SHEET 3 OF 3 SHEETS STA. TO STA.

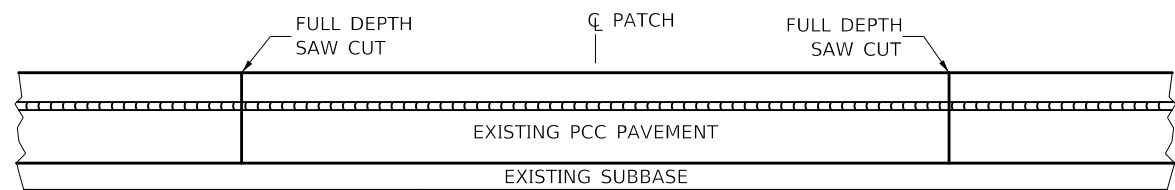
F.A.I. RTE.	SECTION	COUNTY	TOTAL SHEETS	SHEET NO.
57&74	D5 CM PATCH 2020-4	*	15	12
* CHAMPAIGN & VERMILION		CONTRACT NO. 70E39		
ILLINOIS FED. AID PROJECT				



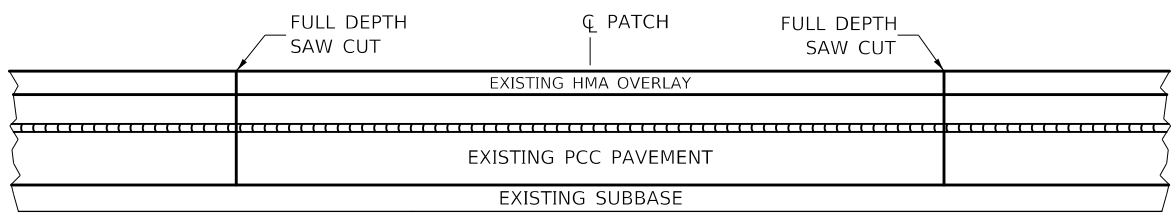
**PAVEMENT SAWING DETAIL
(HMA SHOULDER)**



**PAVEMENT SAWING DETAIL
(PCC SHOULDER)**

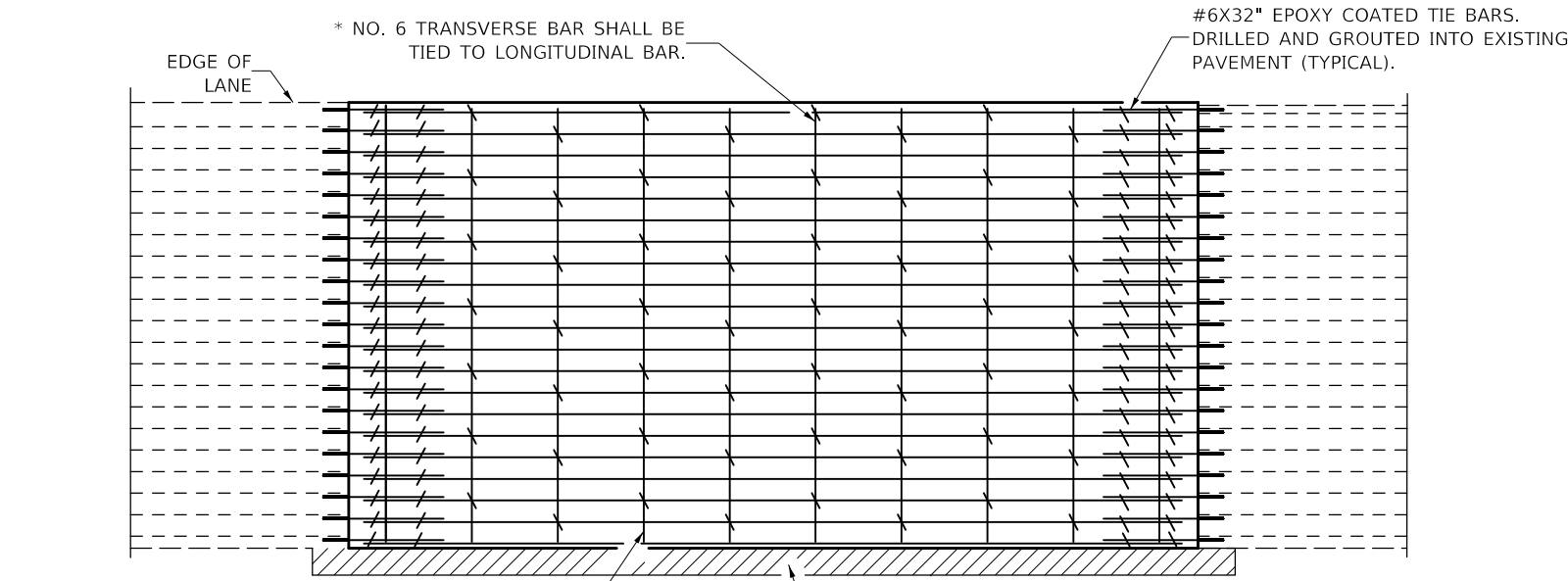


EXISTING PAVEMENT WITHOUT HMA SURFACE

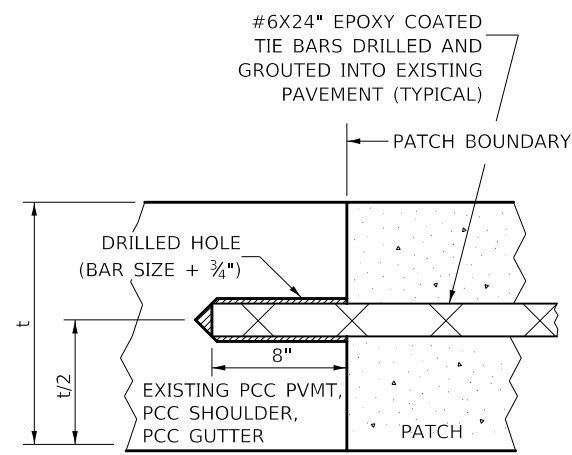


EXISTING PAVEMENT WITH HMA SURFACE

**PAVEMENT SAWING DETAIL FOR CLASS A PATCHING
(CRC PAVEMENT)**



PAVEMENT REINFORCEMENT DETAIL



LONGITUDINAL CONSTRUCTION JOINT

PATCHES MORE THAN 20' IN LENGTH SHALL BE TIED TO ADJACENT PAVEMENT, PCC SHOULDERS OR PCC CURB AND GUTTER WITH #6x24" EPOXY COATED TIE BARS AT 24" CENTERS.

NOTES:

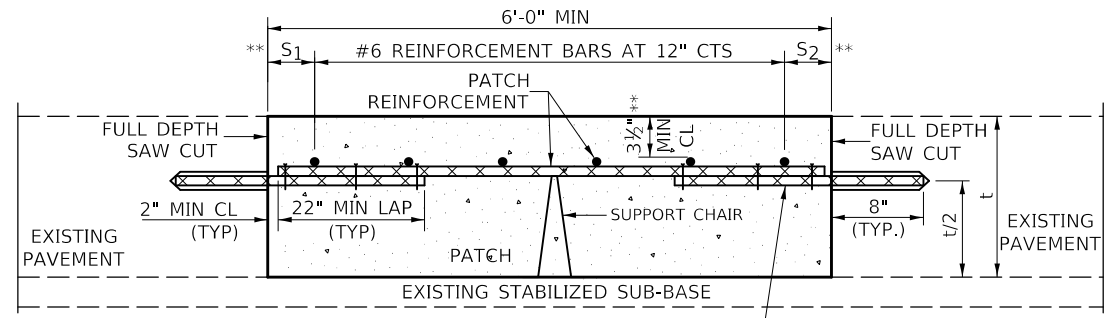
EXISTING LONGITUDINAL REINFORCEMENT SPACING; $\pm 6\frac{1}{2}$ ".

SPACING OF NEW LONGITUDINAL REINFORCEMENT AND NEW LONGITUDINAL TIE BARS SHALL MATCH SPACING OF EXISTING REINFORCEMENT AND SHALL BE TIED TOGETHER WITH A MINIMUM OF TWO TIES PER BAR.

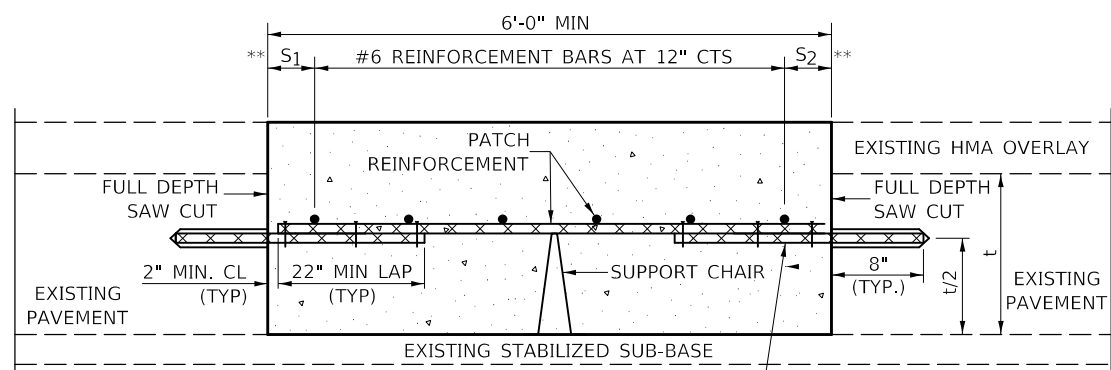
SUPPORT CHAIRS SHALL BE REQUIRED WHENEVER PATCH LENGTH EXCEEDS 6'-0"

* EVERY THIRD INTERSECTION MUST BE TIED. WHEN THE MINIMUM CLEARANCE CANNOT BE OBTAINED WITH THE TRANSVERSE REBAR ON TOP, THEN THE TRANSVERSE REBAR SHALL BE TIED TO THE BOTTOM OF THE LONGITUDINAL REBAR.

** VARIABLES WHERE S_1 AND S_2 ARE $2\frac{1}{2}$ " MIN. AND 12" MAX.



WITHOUT HMA OVERLAY



WITH HMA OVERLAY

**PATCHING DETAIL FOR CLASS A PATCHING
(CRC PAVEMENT)**

MODEL: I:\MODEL\MAINT FILE: 57674.ctb PROJECT: 70E39\CADD\DATA\CAD\PROJECTS\70E39\CH-Detail.dgn

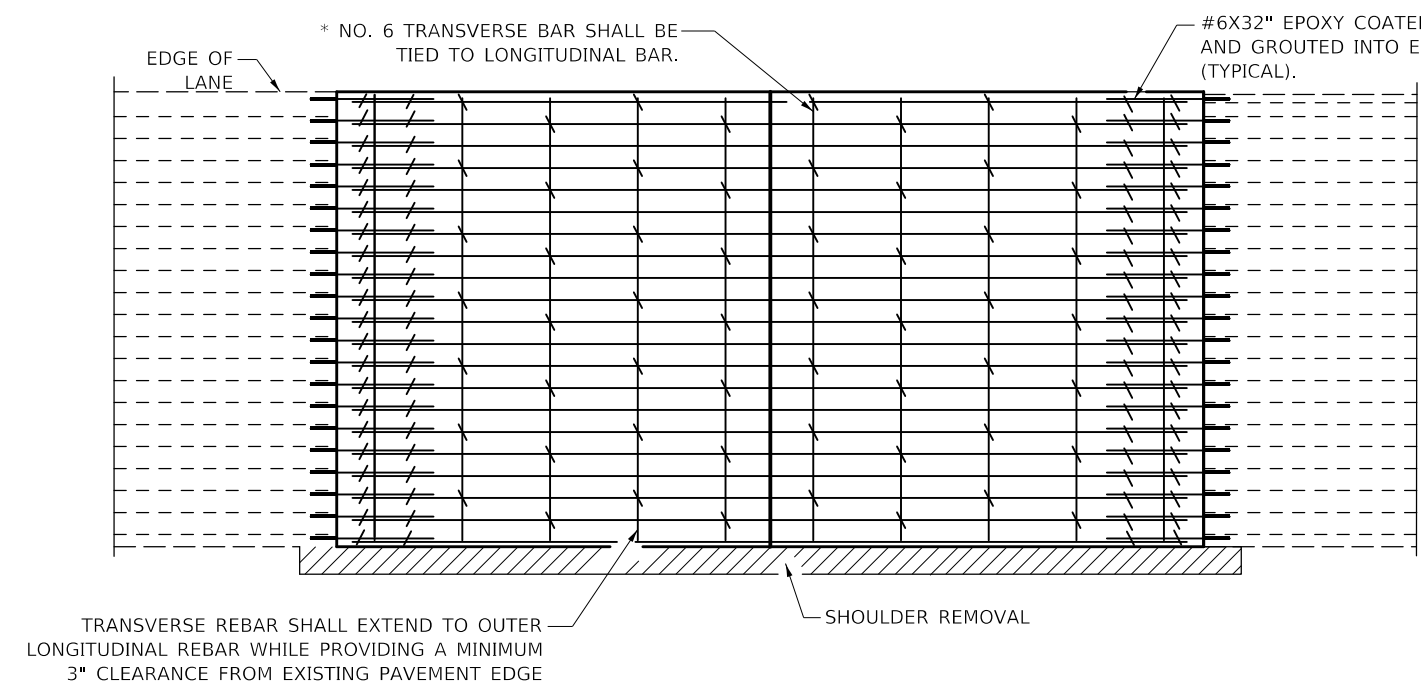
USER NAME = CurtinCB	DESIGNED -	REVISED -
PLOT SCALE = 40,0000 ' / in.	DRAWN -	REVISED -
PLOT DATE = 3/4/2020	CHECKED -	REVISED -
	DATE -	REVISED -

**STATE OF ILLINOIS
DEPARTMENT OF TRANSPORTATION**

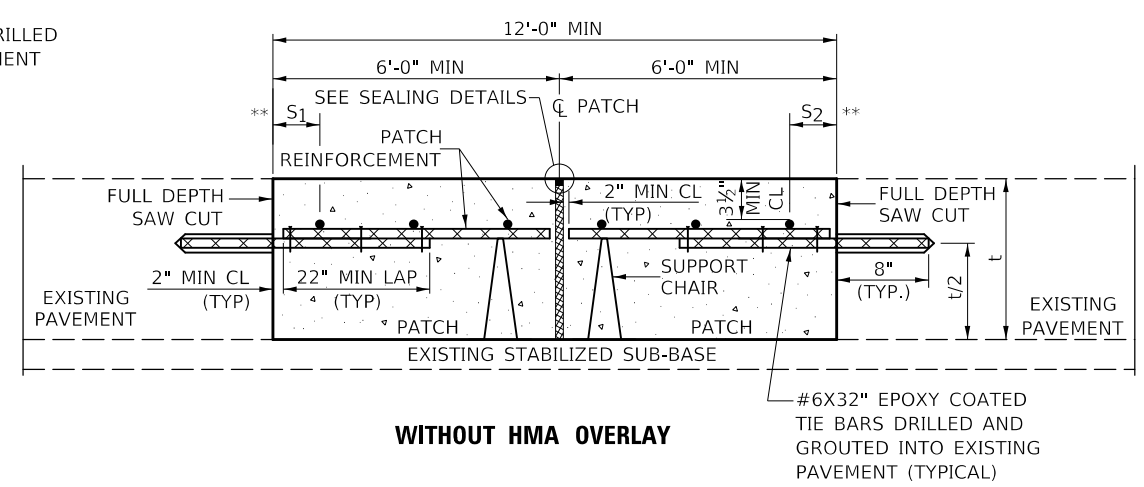
CLASS A PATCHING (SPECIAL)

SCALE: NONE SHEET 1 OF 2 SHEETS STA. TO STA.

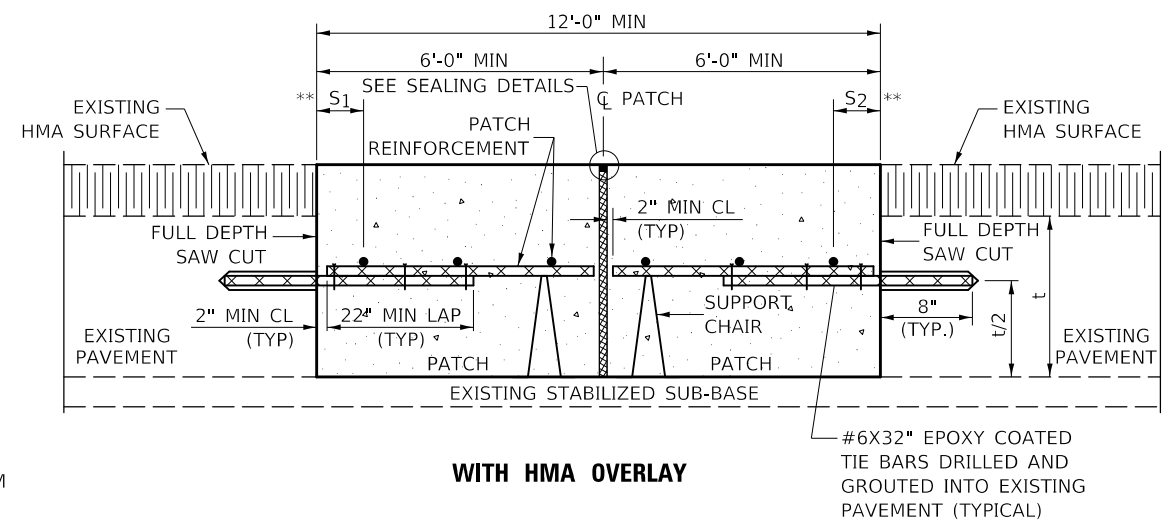
F.A.J. RTE.	SECTION	COUNTY	TOTAL SHEETS	SHEET NO.
57674	D5 CM PATCH 2020-4	*	15	13
* CHAMPAIGN & VERMILION		CONTRACT NO. 70E39		
ILLINOIS FED. AID PROJECT				



PAVEMENT REINFORCEMENT DETAIL

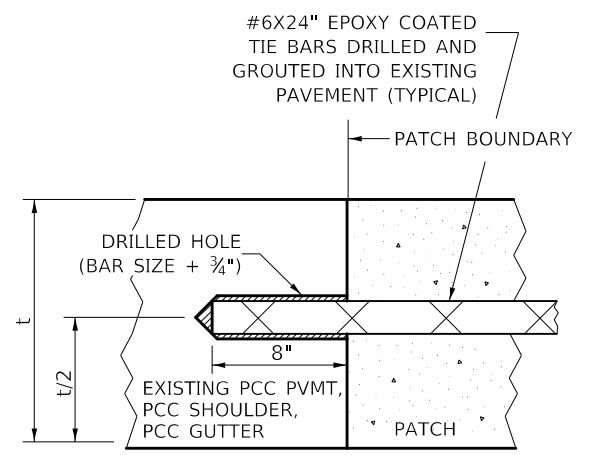


WITHOUT HMA OVERLAY



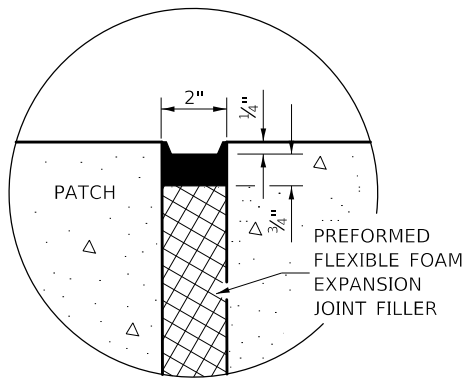
WITH HMA OVERLAY

CLASS A PATCH WITH EXPANSION JOINT

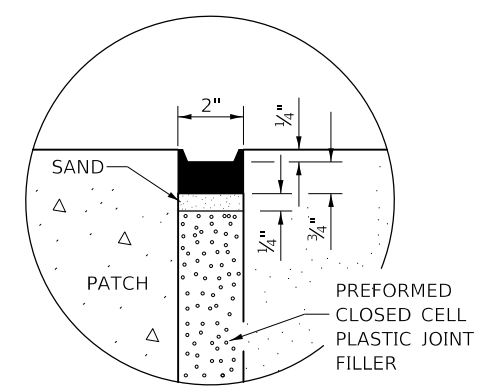


LONGITUDINAL CONSTRUCTION JOINT

PATCHES MORE THAN 20' IN LENGTH SHALL BE TIED TO ADJACENT PAVEMENT, PCC SHOULDERS OR PCC CURB AND GUTTER WITH #6x24" EPOXY COATED TIE BARS AT 36" CENTERS.



SEALING DETAIL



SEALING DETAIL

- NOTES:**
- EXISTING LONGITUDINAL REINFORCEMENT SPACING; $\pm 6\frac{1}{2}$ ".
 - SPACING OF NEW LONGITUDINAL REINFORCEMENT AND NEW LONGITUDINAL TIE BARS SHALL MATCH SPACING OF EXISTING REINFORCEMENT AND SHALL BE TIED TOGETHER WITH A MINIMUM OF TWO TIES PER BAR.
 - SUPPORT CHAIRS SHALL BE REQUIRED WHENEVER PATCH LENGTH EXCEEDS 6'-0"
 - EVERY THIRD INTERSECTION MUST BE TIED. WHEN THE MINIMUM CLEARANCE CANNOT BE OBTAINED WITH THE TRANSVERSE REBAR ON TOP, THEN THE TRANSVERSE REBAR SHALL BE TIED TO THE BOTTOM OF THE LONGITUDINAL REBAR.
 - VARIABLES WHERE S AND S ARE 2½" MIN. AND 12" MAX.

MODEL: I:\MODEL\MHFE... FILE: MHFE... PROJECT: 0570E39\CADDData\CAD\Sheet\0570E39-CH-Details.dgn

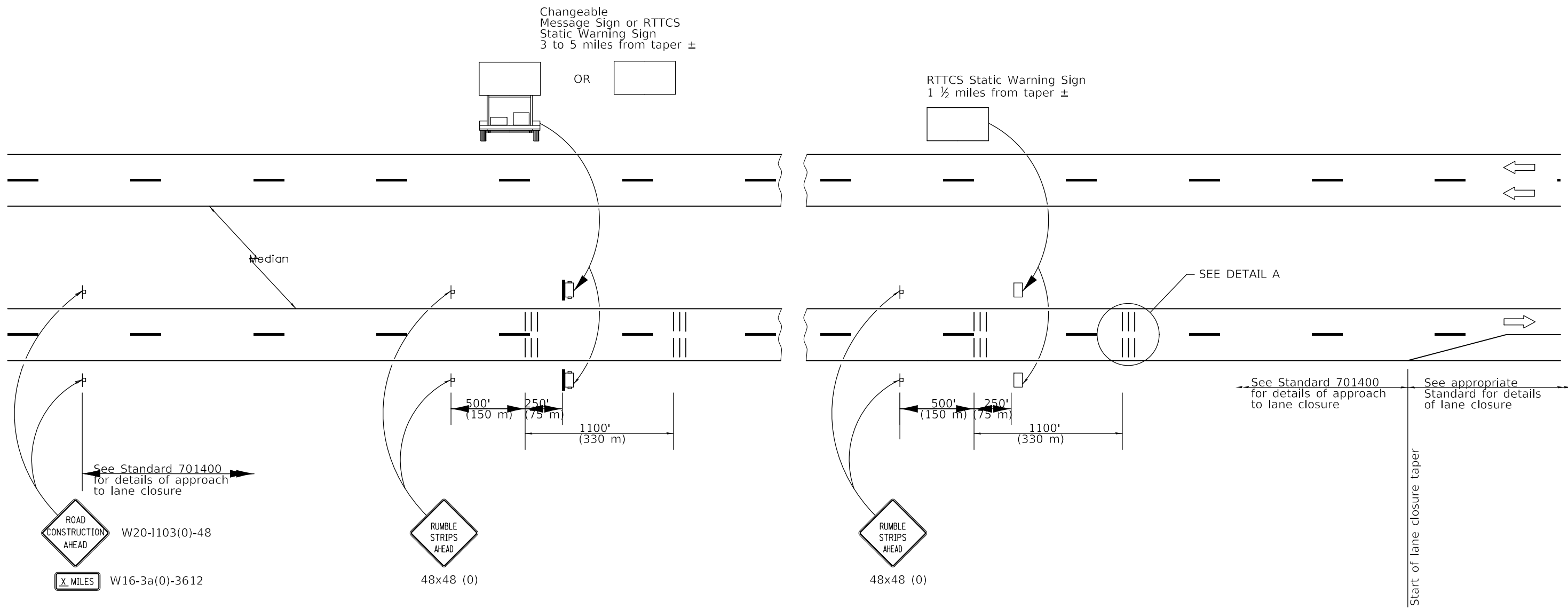
USER NAME = CurtinCB	DESIGNED -	REVISED -
	DRAWN -	REVISED -
PLOT SCALE = 40.0000 ' / in.	CHECKED -	REVISED -
PLOT DATE = 3/4/2020	DATE -	REVISED -

**STATE OF ILLINOIS
DEPARTMENT OF TRANSPORTATION**

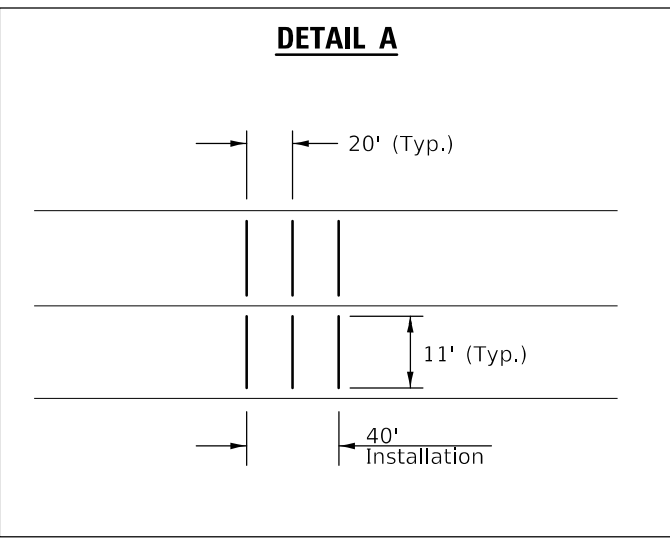
CLASS A PATCHING (SPECIAL)			
SCALE: NONE	SHEET 2	OF 2 SHEETS	STA. TO STA.

F.A.J. RTE.	SECTION	COUNTY	TOTAL SHEETS	SHEET NO.
57&74	D5 CM PATCH 2020-4	*	15	14
* CHAMPAIGN & VERMILION		CONTRACT NO. 70E39		
ILLINOIS FED. AID PROJECT				

DETAIL FOR TEMPORARY RUMBLE STRIPS (SPECIAL)



DETAIL A



SYMBOLS

- † Sign
- ||| Temporary Rumble Strips (Special)
- Trailer Mounted Sign
- RTCS Static Warning Sign

GENERAL NOTES

Remove the Temporary Rumble Strips (Special) prior to the removal of the advanced warning signs.

All dimensions are in inches (millimeters) unless otherwise shown.

MODEL: \\MODEL\MHFS
FILE: \\mhfs\p\champaign\champaign\DOT\Office\Detail\57674\CADDData\CAD\Sheet\0570E39\ch-Details.dgn

USER NAME = CurtinCB	DESIGNED -	REVISED -
PLOT SCALE = 40,0000 ' / in.	DRAWN -	REVISED -
PLOT DATE = 3/4/2020	CHECKED -	REVISED -
	DATE -	REVISED -

STATE OF ILLINOIS
DEPARTMENT OF TRANSPORTATION

DETAIL FOR TEMPORARY RUMBLE STRIPS (SPECIAL)

SCALE: SHEET 1 OF 1 SHEETS STA. TO STA.

F.A.I. RTE.	SECTION	COUNTY	TOTAL SHEETS	SHEET NO.
57&74	D5 CM PATCH 2020-4	*	15	15
* CHAMPAIGN & VERMILION			CONTRACT NO. 70E39	
ILLINOIS FED. AID PROJECT				