

MODEL: Default
 FILE NAME: p:\p12\120000.dwg
 ILLINOIS GOV. RWIDOT\Documents\DOT Offices\Dir\ct. B\Projects\076664\CADD\Drawings\076664-14-500.dgn

CODE NO.	ITEM	UNIT	TOTAL QUANTITY	CONSTRUCTION CODE		
				ROADWAY	BRIDGE	BRIDGE
				0005 RURAL	0047 014-0049	0047 014-0052
				80% FED 20% STATE		
40600290	BITUMINOUS MATERIALS (TACK COAT)	POUND	51111	50427	563	121
40600982	HOT-MIX ASPHALT SURFACE REMOVAL - BUTT JOINT	SQ YD	347	347		
40600985	PORTLAND CEMENT CONCRETE SURFACE REMOVAL - BUTT JOINT	SQ YD	120	120		
40600990	TEMPORARY RAMP	SQ YD	76	76		
40603085	HOT-MIX ASPHALT BINDER COURSE, 1L-19.0, N70	TON	7811	7811		
40604112	POLYMERIZED HOT-MIX ASPHALT SURFACE COURSE, 1L-9.5FG, MIX "D", N70	TON	5049	4874	175	
40604114	POLYMERIZED HOT-MIX ASPHALT SURFACE COURSE, 1L-9.5FG, MIX "D", N90	TON	5087	4874	175	38
44200529	CLASS A PATCHES, TYPE II, 8 INCH	SQ YD	1652	1652		
44200533	CLASS A PATCHES, TYPE III, 8 INCH	SQ YD	1040	1040		
44200535	CLASS A PATCHES, TYPE IV, 8 INCH	SQ YD	14021	14021		
44213000	PATCHING REINFORCEMENT	SQ YD	16715	16715		
44213200	SAW CUTS	FOOT	45069	45069		
44213204	TIE BARS 3/4"	EACH	4052	4052		
48101200	AGGREGATE SHOULDERS, TYPE B	TON	1973	1973		
48203100	HOT-MIX ASPHALT SHOULDERS	TON	10083	10083		
50102400	CONCRETE REMOVAL	CU YD	37.1			37.1
50300255	CONCRETE SUPERSTRUCTURE	CU YD	41.6			41.6



△ REV. 6-2-2020

REV. - MS

USER NAME = dintelmanjn	DESIGNED -	REVISED -
DRAWN -	REVISOR -	
PLOT SCALE = 100.0000' / in.	CHECKED -	REVISOR -
PLOT DATE = 4/2/2020	DATE -	REVISOR -

**STATE OF ILLINOIS
DEPARTMENT OF TRANSPORTATION**

SUMMARY OF QUANTITIES

SCALE: SHEET OF SHEETS STA. TO STA.

F.A.P. RTE.	SECTION	COUNTY	TOTAL SHEETS	SHEET NO.
327	14-13RS	CLINTON	36	3
CONTRACT NO. 76K64				
ILLINOIS FED. AID PROJECT				

MODEL: Default
 FILE NAME: \\p:\planroom\dot\illinois.gov\PI\DOT\Documents\DOT_Offices\District_8\Projects\1376\K64\CAD\Sheet\1376K64-sht-500.dgn

CODE NO.	ITEM	UNIT	TOTAL QUANTITY	CONSTRUCTION CODE		
				ROADWAY	BRIDGE	BRIDGE
				0005 RURAL	0047 014-0049	0047 014-0052
						80% FED 20% STATE
X2010505	CLEARING, SPECIAL	L SUM	1		0.5	0.5
X4420539	CLASS A PATCHES, TYPE II, 8 INCH (SPECIAL)	SQ YD	48	48		
X5870015	BRIDGE DECK CONCRETE SEALER	SQ FT	1721			1721
X7030005	TEMPORARY PAVEMENT MARKING REMOVAL	SQ FT	18523	18523		
Z0001905	STRUCTURAL STEEL REPAIR	POUND	1660		1660	
Z0004556	HOT-MIX ASPHALT SURFACE REMOVAL (DECK)	SQ YD	570			570
Z0016002	DECK SLAB REPAIR (FULL DEPTH, TYPE II)	SQ YD	50		20	30
Z0016200	DECK SLAB REPAIR (PARTIAL)	SQ YD	100		50	50
Z0021910	SILICONE JOINT SEALER, 2.25"	FOOT	164		164	
Z0033700	LONGITUDINAL JOINT SEALANT	FOOT	21047	20336	585	126
Z0076600	TRAINEES	HOUR	2500	2500		
Z0034105	MATERIAL TRANSFER DEVICE	TON	12685	12685		
Z0076604	TRAINEES TRAINING PROGRAM GRADUATE	HOUR	2500	2500		
Z0040530	PIPE UNDERDRAIN REMOVAL	FOOT	41566	41566		



∅

∅

∅ 0042

△ REV. 6-2-2020
 REV. - MS

USER NAME = dintelmanjn	DESIGNED -	REVISED -
DRAWN -	REVISED -	
PLOT SCALE = 100.0000' / in.	CHECKED -	REVISED -
PLOT DATE = 4/2/2020	DATE -	REVISED -

**STATE OF ILLINOIS
 DEPARTMENT OF TRANSPORTATION**

SUMMARY OF QUANTITIES

SCALE: SHEET OF SHEETS STA. TO STA.

F.A.P. RTE.	SECTION	COUNTY	TOTAL SHEETS	SHEET NO.
327	14-13RS	CLINTON	36	7
			CONTRACT NO. 76K64	
ILLINOIS FED. AID PROJECT				

TYPE A PATCHING SCHEDULE

MILE	WESTBOUND LANE		PAVEMENT PATCHING				SAW CUTS	PATCHING	
	LTH.	WTH.	TY-I SQ YDS	TY-II SQ YDS	TY-III SQ YDS	TY-IV SQ YDS	HMA SHLDR FT	REINFORCEMENT	TIE BARS EACH
0	St. Rose Road Overpass								
0.2-0.3	12	12			16		73	16	
	6	12		8			61	8	
	40	12				53	129	53	18
	6	12		8			61	8	
	6	12		8			61	8	
	6	12		8			61	8	
	8	12		11			65	11	
	6	12		8			61	8	
	10	12		13			69	13	
	20	12				27	89	27	
	20	12				27	89	27	
	6	12		8			61	8	
0.3-0.4	8	12		11			65	11	
	6	12		8			61	8	
	8	12		11			65	11	
	6	12		8			61	8	
	6	12		8			61	8	
0.4-0.5	40	12				53	129	53	18
	320	12				427	689	427	158
	120	12				160	289	160	58
	20	12				27	89	27	
0.5-0.6	50	12				67	149	67	23
	40	12				53	129	53	18
	40	12				53	129	53	18
	25	12				33	99	33	11
	120	12				160	289	160	58
	200	12				267	449	267	98
0.6-0.7	50	12				67	149	67	23
	100	12				133	249	133	48
	16	12			21		81	21	
	16	12			21		81	21	
0.7-0.8	6	12		8			61	8	
	80	12				107	209	107	38
	20	12				27	89	27	
	100	12				133	249	133	48
	50	12				67	149	67	23
	50	12				67	149	67	23
0.8-0.9	10	12		13			69	13	
	100	12				133	249	133	48
0.9-1.0	50	12				67	149	67	23
	100	12				133	249	133	48
	8	12		11			65	11	
	6	12		8			61	8	
	8	12		11			65	11	
	8	12		11			65	11	
1.0-1.1	200	12				267	449	267	98
	50	12				67	149	67	23
	6	12		8			61	8	
	6	12		8			61	8	
1.1-1.2	40	12			53		129	53	18
	8	12		11			65	11	
	30	12			40		109	40	13
	20	12			27		89	27	8
	6	12		8			61	8	
	6	12		8			61	8	
	6	12		8			61	8	
1.2-1.3	16	12			21		81	21	
	10	12		13			69	13	
	6	12		8			61	8	
	40	12			53		129	53	18
	30	12			40		109	40	
1.3-1.4	10	12		13			69	13	
	40	12			53		129	53	18
	6	12		8			61	8	
	10	12		13			69	13	
1.4	Little Prairie Creek Bridge								
1.4-1.5	8	12		11			65	11	
	6	12		8			61	8	
	40	12			53		129	53	18
	10	12		13			69	13	
1.5-1.6	10	12		13			69	13	
	6	12		8			61	8	
	12	12			16		73	16	
	12	12			16		73	16	
	12	12			16		73	16	
	50	12			67		149	67	23
	30	12			40		109	40	13
1.6-1.7	30	12			40		109	40	13
	6	12		8			61	8	
	6	12		8			61	8	
1.7-1.8	20	12			27		89	27	
	8	12		11			65	11	
	8	12		11			65	11	
	10	12		13			69	13	
	6	12		8			61	8	
	40	12			53		129	53	18
	160	12			213		369	213	78
SUB TOTAL			0	397	128	3433	10154	3959	1159

TYPE A PATCHING SCHEDULE

MILE	WESTBOUND LANE		PAVEMENT PATCHING				SAW CUTS	PATCHING	
	LTH.	WTH.	TY-I SQ YDS	TY-II SQ YDS	TY-III SQ YDS	TY-IV SQ YDS	HMA SHLDR FT	REINFORCEMENT	TIE BARS EACH
1.8-1.9	20	12				27	89	27	
	20	12				27	89	27	
	10	12			13		69	13	
1.9	Schumacher Road Overpass								
1.9-2.0	16	12			21		81	21	
	25	12				33	99	33	11
	10	12			13		69	13	
	6	12			8		61	8	
	10	12			13		69	13	
	10	12			13		69	13	
	6	12			8		61	8	
	6	12			8		61	8	
2.0-2.1	20	12				27	89	27	
	12	12			16		73	16	
	50	12				67	149	67	23
	60	12				80	169	80	28
2.1-2.2	20	12				27	89	27	
	16	12			21		81	21	
	60	12				80	169	80	28
	16	12			21		81	21	
2.2-2.3	100	12				133	249	133	48
	6	12			8		61	8	
	10	12			13		69	13	
	6	12			8		61	8	
	160	12				213	369	213	78
	20	12				27	89	27	
	100	12				133	249	133	48
2.3-2.4	16	12			21		81	21	
	60	12				80	169	80	28
	6	12			8		61	8	
	12	12			16		73	16	
	10	12			13		69	13	
	6	12			8		61	8	
2.4-2.5	20	12				27	89	27	
	6	12			8		61	8	
	10	12			13		69	13	
	10	12			13		69	13	
2.5-2.6	20	12				27	89	27	
	6	12			8		61	8	
2.6-2.7	120	12				160	289	160	58
	10	12			13		69	13	
	6	12			8		61	8	
	6	12			8		61	8	
	20	12				27	89	27	
2.7-2.8	160	12				213	369	213	78
	20	16				36	105	36	
	20	16				36	105	36	
	20	16				36	105	36	
2.8-2.9	40	18				80	153	80	
	120	18				240	313	240	58
	30	18				60	133	60	13
	40	18				80	153	80	18
2.9	Russland Road								
2.9-3.0	30	18				60	133	60	13
	60	18				120	193	120	28
	12	18			24		97	24	
	12	18			24		97	24	
	6	18			12		85	12	
	10	18			20		93	20	
	60	18				120	193	120	28
3.0-3.1	20	18				40	113	40	
	30	16				53	125	53	13
	8	14			12		73	12	
3.1-3.2	30	12				40	109	40	13
	30	12				40	109	40	13
	20	12				27	89	27	
3.2-3.3	30	12				40	109	40	13
3.3-3.4	20	12				27	89	27	
	8	12			11		65	11	
	6	12			8		61	8	
	8	12			11		65	11	
	70	12				93	189	93	33

TYPE A PATCHING SCHEDULE

MILE	EASTBOUND LANE		PAVEMENT PATCHING				SAW CUTS	PATCHING	
	LTH.	WTH.	TY-I SQ YDS	TY-II SQ YDS	TY-III SQ YDS	TY-IV SQ YDS	HMA SHLDR FT	REINFORCEMENT SQ YDS	TIE BARS EACH
1.5-1.6	6	12		8			61	8	
	12	12			16		73	16	
	12	12			16		73	16	
1.6-1.7	80	12				107	209	107	38
	6	12		8			61	8	
	20	12				27	89	27	
	6	12		8			61	8	
	6	12		8			61	8	
	240	12				320	529	320	118
1.7-1.8	16	12			21		81	21	
	12	12			16		73	16	
	30	12				40	109	40	13
	200	12				267	449	267	98
1.8-1.9	6	12		8			61	8	
	40	12				53	129	53	18
	100	12				133	249	133	48
	10	12		13			69	13	
	6	12		8			61	8	
1.9	Schumacher Road Overpass						1	0	
1.9-2.0	16	12			21		81	21	
	40	12				53	129	53	18
	6	12		8			61	8	
	40	12				53	129	53	18
	30	12				40	109	40	13
	30	12				40	109	40	13
2.0-2.1	50	12				67	149	67	23
	20	12				27	89	27	8
	25	12				33	99	33	11
	12	12			16		73	16	
	240	12				320	529	320	118
2.1-2.2	12	12			16		73	16	
	12	12			16		73	16	
	16	12			21		81	21	
	80	12				107	209	107	38
	20	12				27	89	27	
	6	12		8			61	8	
	20	12				27	89	27	
2.2-2.3	6	12		8			61	8	
	80	12				107	209	107	38
	80	12				107	209	107	38
	12	12			16		73	16	
2.3-2.4	6	12		8			61	8	
	16	12			21		81	21	
	6	12		8			61	8	
	30	12				40	109	40	13
	6	12		8			61	8	
	6	12		8			61	8	
	30	12				40	109	40	13
	6	12		8			61	8	
2.4-2.5	40	12				53	129	53	18
	6	12		8			61	8	
	30	12				40	109	40	13
	20	12				27	89	27	
2.6-2.6	20	12				27	89	27	
	20	12				27	89	27	
	12	12			16		73	16	
	12	12			16		73	16	
	20	12				27	89	27	
	6	12		8			61	8	
	6	12		8			61	8	
	6	12		8			61	8	
	6	12		8			61	8	
2.6-2.7	130	12				173	309	173	63
	6	12		8			61	8	
	15	12			20		79	20	
	6	12		8			61	8	
	6	12		8			61	8	
	6	12		8			61	8	
	20	12				27	89	27	
	6	12		8			61	8	
	240	18				480	553	480	118
2.7-2.8	40	18				80	153	80	18
	60	18				120	193	120	28
	6	18				85	12	12	
	20	18				40	113	40	
	40	18				80	153	80	
2.8-2.9	12	18			24		97	24	
	40	18				80	153	80	18
2.9	Russland Road						1	0	
2.9-3.0	20	18				40	113	40	
	40	18				80	153	80	18
	20	18				40	113	40	
	20	18				40	113	40	
	50	18				100	173	100	23
3.0-3.1	40	18				80	153	80	18
	20	16				36	105	36	
	30	16				53	125	53	13
	20	14				31	97	31	
						1	0	0	
SUB TOTAL			0	217	273	3813	10361	4304	1043

TYPE A PATCHING SCHEDULE

MILE	EASTBOUND LANE		PAVEMENT PATCHING				SAW CUTS	PATCHING	
	LTH.	WTH.	TY-I SQ YDS	TY-II SQ YDS	TY-III SQ YDS	TY-IV SQ YDS	HMA SHLDR FT	REINFORCEMENT SQ YDS	TIE BARS EACH
3.1-3.2	50	12				67	149	67	24
	20	12				27	89	27	
	30	12				40	109	40	13
	70	12				93	189	93	33
	40	12				53	129	53	18
3.2-3.3	60	12				80	169	80	28
	20	12				27	89	27	
3.3-3.4	20	12				27	89	27	
	10	12		13			69	13	
3.4-3.5	40	12				53	129	53	18
	10	12		13			69	13	
	6	12		8			61	8	
	15	12			20		79	20	
	8	12		11			65	11	
	6	12		8			61	8	
3.5-3.6	20	12				27	89	27	
	12	12			16		73	16	
	15	12			20		79	20	
	30	12				40	109	40	13
	30	12				40	109	40	13
	6	12		8			61	8	
3.6-3.7	40	12				53	129	53	18
	6	12		8			61	8	
	10	12		13			69	13	
	20	12				27	89	27	
	20	12				27	89	27	
	6	12		8			61	8	
	20	12				27	89	27	
	6	12		8			61	8	
3.7-3.8	10	12		13			69	13	
	6	12		8			61	8	
	6	12		8			61	8	
3.8	Sugar Creek Bridge								
SUB TOTAL				128	56	707	2904	891	178
EB TOTAL				726	580	6480	21370	7787	1821
COMBINED TOTAL				1502	945	12746	40972	15195	3684
10% FOR ANTICIPATED FAILURES				150	95	1275	4097	1520	368
GRAND TOTAL				1652	1040	14021	45069	16715	4052

*NOTE: An additional 10% has been added to the final patching quantity to allow for winter damage

MODEL: I:\MODEL\MAME
FILE NAME: P:\p14\m1000a.dwg
PROJECT: I:\PROJECTS\DOT\Documents\DOT - Office\District 8\Projects\DOT\7664\CADDData\CAD\Project\DOT\7664\p14-sched.tbl.dgn

USER NAME = dintelmanjn	DESIGNED - _____	REVISED - _____
DRAWN - _____	CHECKED - _____	REVISED - _____
PLOT SCALE = 100,0000' / in.	DATE - _____	REVISED - _____
PLOT DATE = 6/3/2020		

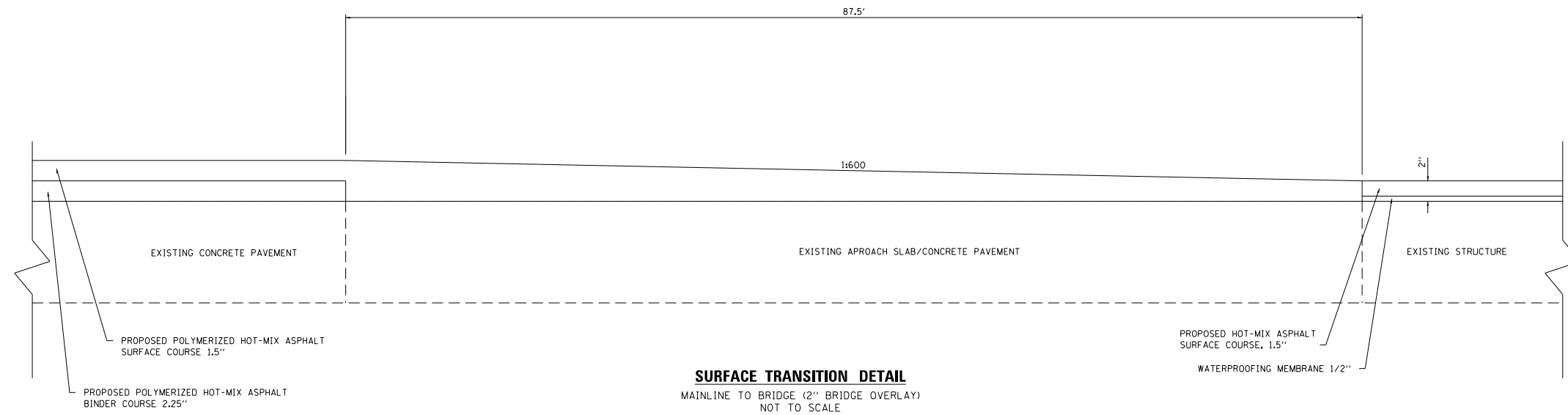
STATE OF ILLINOIS
DEPARTMENT OF TRANSPORTATION

SCHEDULES OF QUANTITIES

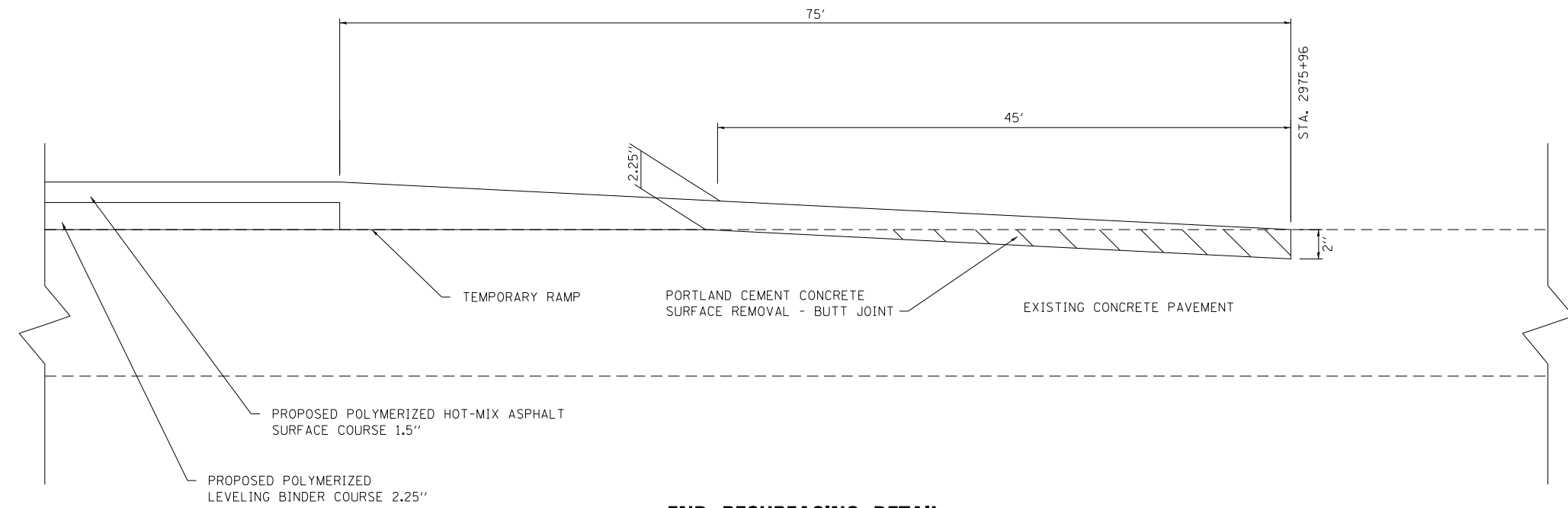
SCALE: _____ SHEET ____ OF ____ SHEETS STA. _____ TO STA. _____

REVISED SHEET 6-2-2020

F.A.P. RTE.	SECTION	COUNTY	TOTAL SHEETS	SHEET NO.
327	14-13RS	CLINTON	36	18
CONTRACT NO. 76K64				
ILLINOIS FED. AID PROJECT				



SURFACE TRANSITION DETAIL
 MAINLINE TO BRIDGE (2" BRIDGE OVERLAY)
 NOT TO SCALE



END RESURFACING DETAIL
 NOT TO SCALE

MODEL: \\MODELNAME
 FILE NAME: \\path\to\file.dwg
 PROJECT: \\path\to\project
 OFFICE: \\path\to\office
 DATE: 6/1/2020

▲ REVISED SHEET 6-2-2020

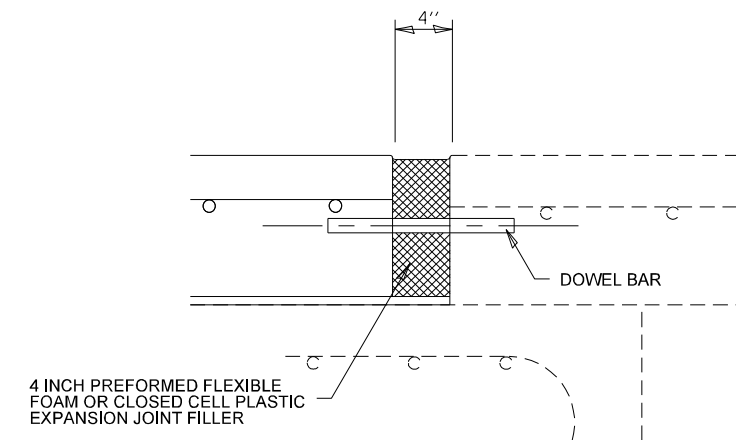
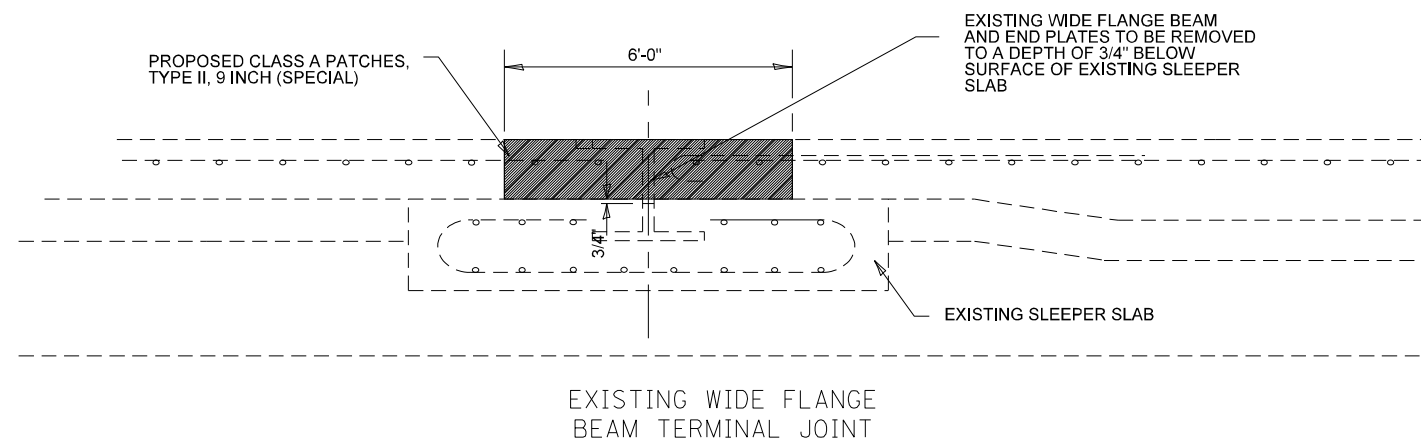
USER NAME = dintelmanjn	DESIGNED - _____	REVISED - _____
	DRAWN - _____	REVISED - _____
PLOT SCALE = 100,0000' / in.	CHECKED - _____	REVISED - _____
PLOT DATE = 6/1/2020	DATE - _____	REVISED - _____

**STATE OF ILLINOIS
 DEPARTMENT OF TRANSPORTATION**

TRANSITION DETAILS

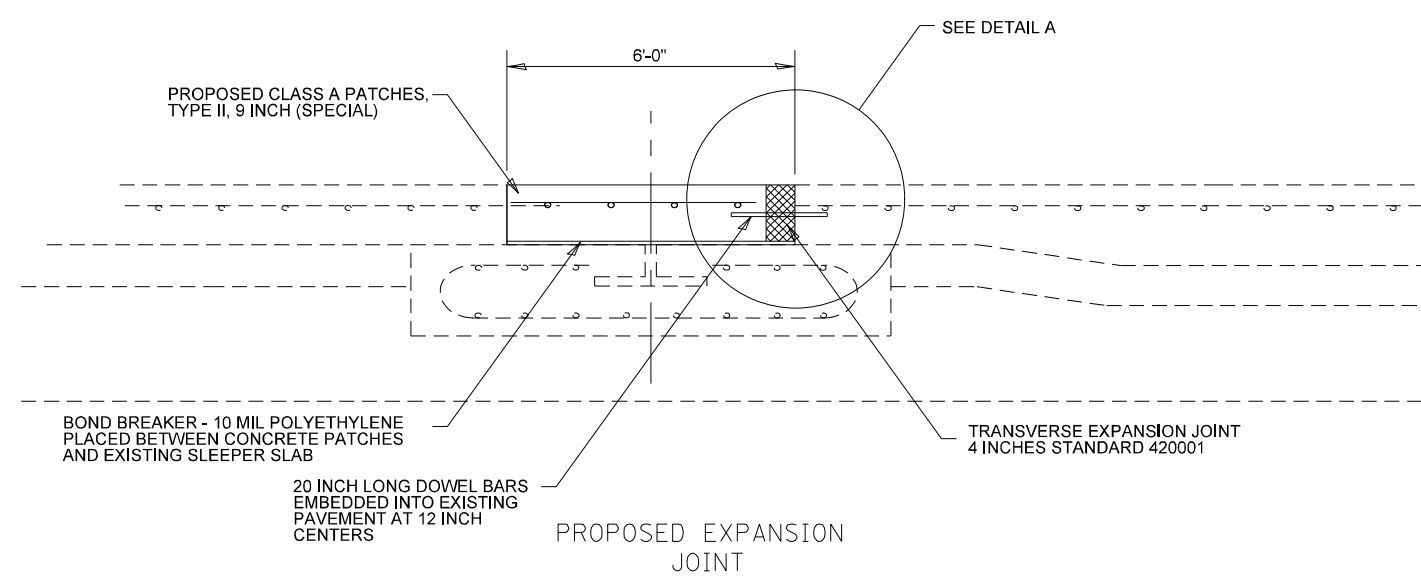
SCALE: _____ SHEET ____ OF ____ SHEETS STA. _____ TO STA. _____

F.A.P. RTE.	SECTION	COUNTY	TOTAL SHEETS	SHEET NO.
327	14-13RS	CLINTON	36	23
CONTRACT NO. 76K64				
ILLINOIS FED. AID PROJECT				



DETAIL A

LEGEND



LOCATION	CLASS A PATCH TYPE II, 9 INCH (SPECIAL)
STATION	SQ YD
2774+85	16
2897+68	16
2901+65	16
TOTALS	48

MODEL: \\MODEL\NAME
 FILE NAME: \\P\14161000.mxd
 PROJECT: \\PROJECTS\DOT\Office\District 9\Projects\0776664\CADD\0776664-CP\0776664-CP\0776664-CP.dgn

1 REVISED SHEET 6-2-2020

USER NAME = dintelmanjn	DESIGNED - _____	REVISED - _____
DRAWN - _____	CHECKED - _____	REVISED - _____
PLOT SCALE = 100,0000' / in.	DATE - _____	REVISED - _____
PLOT DATE = 6/1/2020		

**STATE OF ILLINOIS
DEPARTMENT OF TRANSPORTATION**

**CLASS A PATCH TYPE II
9 INCH (SPECIAL) DETAILS**

SCALE: _____ SHEET _____ OF _____ SHEETS STA. _____ TO STA. _____

F.A.P. RTE. 327	SECTION 14-13RS	COUNTY CLINTON	TOTAL SHEETS 36	SHEET NO. 24
CONTRACT NO. 76K64				
ILLINOIS FED. AID PROJECT				