

STATE OF ILLINOIS
DEPARTMENT OF TRANSPORTATION

F.A.P. RTE.	SECTION	COUNTY	TOTAL SHEETS	SHEET NO.
327	14-13RS	CLINTON	36	1
		ILLINOIS	CONTRACT NO. 76K64	

FOR INDEX OF SHEETS, SEE SHEET NO. 2

PROPOSED HIGHWAY PLANS

FAP ROUTE 327 (US 050)
SECTION 14-13RS
PROJECT NHPP-NAPG(918)
RESURFACING
CLINTON COUNTY

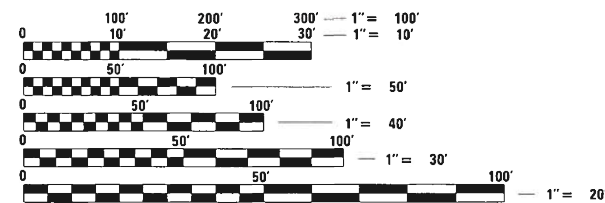
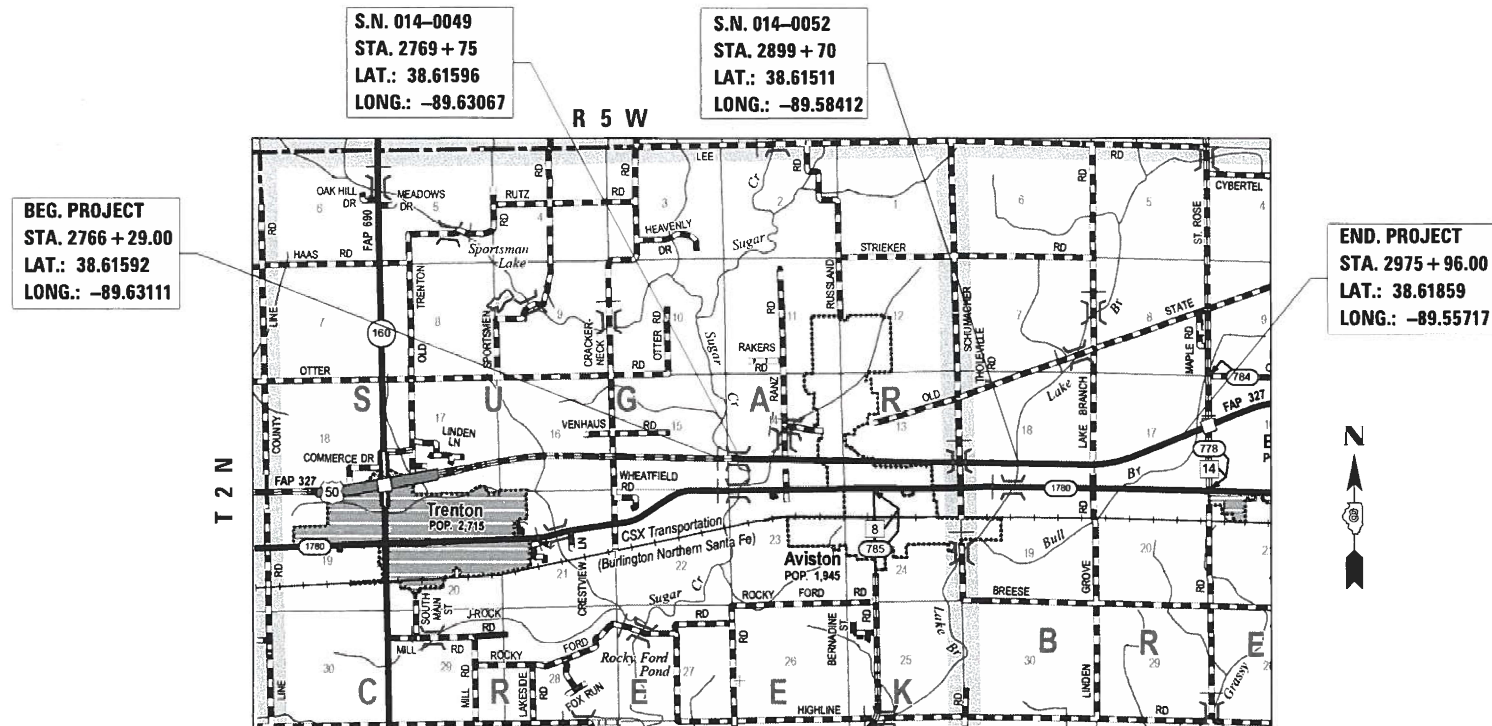
C-98-227-18

TRAFFIC DATA

20158 ADT = 6800 (ACTUAL)
2018 ADT = 6950 (ESTIMATED)
2038 ADT = 8000 (ESTIMATED)
SU = 10.7% MU = 11.0%

DESIGN DESIGNATION

OTHER ARTERIAL



FULL SIZE PLANS HAVE BEEN PREPARED USING STANDARD ENGINEERING SCALES. REDUCED SIZED PLANS WILL NOT CONFORM TO STANDARD SCALES. IN MAKING MEASUREMENTS ON REDUCED PLANS, THE ABOVE SCALES MAY BE USED.

J.U.L.I.E.
JOINT UTILITY LOCATION INFORMATION FOR EXCAVATORS
1-800-892-0123
OR 811

PROJECT ENGINEER HERVE GELIN (618) 346-3179
PROJECT MANAGER HERVE GELIN (618) 346-3179

CONTRACT NO. 76K64

GROSS LENGTH = 20,967 FT. = 3.97 MILE
NET LENGTH = 20967 FT. = 3.97 MILE

STATE OF ILLINOIS
DEPARTMENT OF TRANSPORTATION

SUBMITTED March 27, 2020

Keith Roberts REGIONAL ENGINEER

May 8, 2020 Scott A. Elk
ENGINEER OF DESIGN AND ENVIRONMENT

May 8, 2020 James J. Guerin
DIRECTOR OF HIGHWAYS PROJECT IMPLEMENTATION

PRINTED BY THE AUTHORITY
OF THE STATE OF ILLINOIS

INDEX OF SHEETS

- 1. COVER SHEET
- 2. INDEX OF SHEETS, HIGHWAY STANDARDS, GENERAL NOTES, COMMITMENTS & LOCATION MAP
- 3.-7. SUMMARY OF QUANTITIES
- 8.-11. TYPICAL SECTIONS
- 12.-18. SCHEDULES OF QUANTITIES
- 19. GUARDRAIL DETAIL
- 20. PARAPET DETAILS
- 21.-24. RESURFACING DETAILS
- 25.-27 STRUCTURE 014-0049 PLAN SHEET
- 28.-36. STRUCTURE 014-0052 PLAN SHEET

HIGHWAY STANDARDS

- 000001-07 STANDARD SYMBOLS, ABBREVIATIONS AND PATTERNS
- 001006 DECIMAL OF AN INCH AND OF A FOOT
- 442001-04 CLASS A PATCHES
- 630001-12 STEEL PLATE BEAM GUARDRAIL
- 631031-16 TRAF BARRIER TERM TYPE 6
- 630301-09 SHOULDER WIDENING FOR TYPE 1 (SPECIAL) GUARDRAIL TERMINALS
- 701011-04 OFF-ROAD OPERATIONS MULTILANE 15' TO 24" FROM EOP
- 701201-05 LANE CLOSURE, 2L, 2W, DAY ONLY, FOR SPEEDS ≥ 45 MPH
- 701306-04 LANE CLOSURE, 2L, 2W, SLOW MOVING OPERATIONS DAY ONLY, FOR SPEEDS ≥ 45 MPH
- 701321-18 LANE CLOSURE, 2L, 2W, BRIDGE REPAIR WITH BARRIER
- 701336-07 LANE CLOSURE 2L,2W,-WORK IN AREAS IN SERIES ≥ 45 MPH
- 701901-08 TRAFFIC CONTROL DEVICES
- 704001-08 TEMPORARY CONCRETE BARRIER
- 780001-05 TYPICAL PAVEMENT MARKINGS
- 781001-04 TYPICAL APPLICATIONS RAISED REFLECTIVE PAVEMENT MARKERS

GENERAL NOTES

1. UTILITIES KNOWN TO HAVE FACILITIES WITHIN THE PROJECT AREA ARE AS FOLLOWS:

- AMEREN ILLINOIS
- AT&T ILLINOIS
- VILLAGE OF AVISTON
- CHARTER COMMUNICATIONS, INC.
- CLINTON COUNTY ELECTRIC COOPERATIVE, INC.
- ST. ROSE PUBLIC WATER DISTRICT

2. IF THE PROPOSED SURFACE REMOVAL ON THIS PROJECT PRODUCES A MILLED EDGE ANYWHERE GREATER THAN 1.5 INCHES OR IF THE PROPOSED RESURFACING RESULTS IN AN ELEVATION DIFFERENCE GREATER THAN 2 INCHES NEAR THE CENTERLINE BETWEEN ADJACENT OPEN LANES OF TRAFFIC, ONE OF THE FOLLOWING SHALL APPLY:

- *THE CONTRACTOR SHALL ORGANIZE THE WORK TO AVOID THE ELEVATION DIFFERENCES MENTIONED ABOVE.
- *THE CONTRACTOR SHALL CONSTRUCT OF TEMPORARY HOT-MIX ASPHALT WEDGE TO AVOID THE ELEVATION DIFFERENCES MENTIONED ABOVE.
- *THE CONTRACTOR SHALL CONSTRUCT A MILLED SLOPE EDGE (MINIMUM 1:3) TO AVOID THE ELEVATION DIFFERENCES MENTIONED ABOVE.

THE COST OF THIS WORK SHALL BE INCLUDED IN THE COST PER SQUARE YARD FOR HOT-MIX ASPHALT SURFACE REMOVAL OF THE DEPTH SPECIFIED OR IN THE COST PER TON FOR THE HOT-MIX ASPHALT RESURFACING MIXES SPECIFIED IN THE PLANS.

3. THE CONTRACTOR SHALL PROVIDE POSITIVE AND ADEQUATE DRAINAGE AT ALL TIMES.

4. ONLY SHORT TERM PAVEMENT MARKING REMOVAL FROM THE FINAL SURFACE SHALL BE PAID FOR AS 'SHORT TERM PAVEMENT MARKING REMOVAL'.

5. THE PROPOSED PAVEMENT MARKING SHALL MATCH THE LOCATIONS OF THE EXISTING PAVEMENT MARKING, AS DIRECTED BY THE ENGINEER.

6. ALL AREAS DISTURBED FOR ANY REASON SHALL BE PERMANENTLY SEEDED AS DIRECTED BY THE ENGINEER. ALL AREAS DISTURBED BY THE CONTRACTOR OUTSIDE THE PROPOSED CONSTRUCTION LIMITS SHALL BE SEEDED AT THE CONTRACTOR'S EXPENSE.

7. A QUANTITY OF 50 FEET OF 'LOCATING UNDERGROUND CABLE' HAS BEEN INCLUDED IN THE PLANS FOR USE, AS DIRECTED BY THE ENGINEER.

8. THE FOLLOWING MIXTURE REQUIREMENTS ARE APPLICABLE FOR THIS PROJECT:

MIXTURE USE	POLY SURFACE	BINDER	SHOULDER (LOWER)	SHOULDER (SURFACE)
AC/PG	SBS PG 76-22	PG 64-22	PG 64-22	PG 64-22
RAP % (MAX)	SEE SPECIAL PROVISION	SEE SPECIAL PROVISION	SEE SPECIAL PROVISION	SEE SPECIAL PROVISION
DESIGN AIR Voids	4.0% @ Ndes=70	4.0% @ Ndes=70	4.0% @ Ndes=30	4.0% @ Ndes=30
MIX COMPOSITION (GRADATION)	IL 9.5	IL 19.0	IL 19.0L	IL 9.5L
FRICTION AGG	MIXTURE "D"	MIXTURE "B"		
QUALITY MGMT PROGRAM	QC/QA	QC/QA	QC/QA	QC/QA

PLAN QUANTITIES FOR HOT-MIX ASPHALT SURFACE COURSE ITEMS ARE CALCULATED USING A UNIT WEIGHT OF 112 LB/SQ YD/IN.

9. THE MATERIAL TRANSFER DEVICE CAN OPERATED IN AN UNLOADED FASHION ACROSS THE FOLLOWING STRUCTURES WITH THE MAXIMUM GROSS WEIGHT RESTRICTIONS:
 014-0049 (40 TONS)
 014-0052 (40 TONS)

IF THE SAME MTD IS USED THROUGHOUT THE ENTIRE PROJECT, THEN IT MUST BE LIMITED TO AN EMPTY GROSS WIEGHT OF ≤ 40 TONS.

COMMITMENTS

NONE

REV. - MS

FILE NAME =	USER NAME = dntelmonjn	DESIGNED - _____	REVISED - _____	STATE OF ILLINOIS DEPARTMENT OF TRANSPORTATION	INDEX OF SHEETS, HIGHWAY STANDARDS, GENERAL NOTES, COMMITMENTS, & LOCATION MAP	F.A.P. RTE.	SECTION	COUNTY	TOTAL SHEETS	SHEET NO.	
pw:\planroom.dot.illinois.gov\PIDOT\Documents\IDOT Offices\District 8\Projects\0876K64\DRAWING\CAD\Sheets\0876K64-shr-gennotes	REVISIONS	REVISIONS	327			14-13R5	CLINTON	36	2		
#MODELNAME#	PLOT SCALE = 100.0000' / in.	CHECKED - _____	REVISED - _____			CONTRACT NO. 76K64					
	PLOT DATE = 5/14/2020	DATE - _____	REVISED - _____			ILLINOIS FED. AID PROJECT					

SCALE: _____ SHEET ____ OF ____ SHEETS STA. _____ TO STA. _____

MODEL: Default
 FILE NAME: P:\p1planroom.dwg
 ILLINOIS.GOV\PWIDOT\Documents\DOT_Offices\District 8\Projects\ID76664\CADD\Drawings\ID76664-SP-500.dgn

CODE NO.	ITEM	UNIT	TOTAL QUANTITY	CONSTRUCTION CODE		
				ROADWAY	BRIDGE	BRIDGE
				0005	0047	0047
				RURAL	014-0049	014-0052
64200116	SHOULDER RUMBLE STRIPS, 16 INCH	FOOT	40512	40512		
67000400	ENGINEER'S FIELD OFFICE, TYPE A	CAL MO	9	9		
67100100	MOBILIZATION	L SUM	1	1		
70100405	TRAFFIC CONTROL AND PROTECTION, STANDARD 701321	EACH	2		1	1
70100450	TRAFFIC CONTROL AND PROTECTION, STANDARD 701201	L SUM	1	1		
70100460	TRAFFIC CONTROL AND PROTECTION, STANDARD 701306	L SUM	1	1		
70100600	TRAFFIC CONTROL AND PROTECTION, STANDARD 701336	L SUM	1	1		
70102635	TRAFFIC CONTROL AND PROTECTION, STANDARD 701701	L SUM	1	1		
70103815	TRAFFIC CONTROL SURVEILLANCE	CAL DA	15		5	10
70106500	TEMPORARY BRIDGE TRAFFIC SIGNALS	EACH	2		1	1
70106700	TEMPORARY RUMBLE STRIPS	EACH	12		6	6
70300100	SHORT TERM PAVEMENT MARKING	FOOT	8509	8509		
70300150	SHORT TERM PAVEMENT MARKING REMOVAL	SQ FT	1418	1418		
70300210	TEMPORARY PAVEMENT MARKING LETTERS AND SYMBOLS	SQ FT	63	63		
70300220	TEMPORARY PAVEMENT MARKING - LINE 4"	FOOT	54552	54552		

REV. - MS

USER NAME = dintelmanjn	DESIGNED -	REVISED -
	DRAWN -	REVISED -
PLOT SCALE = 100.0000' / in.	CHECKED -	REVISED -
PLOT DATE = 4/2/2020	DATE -	REVISED -

**STATE OF ILLINOIS
DEPARTMENT OF TRANSPORTATION**

SUMMARY OF QUANTITIES

SCALE: SHEET OF SHEETS STA. TO STA.

F.A.P. RTE.	SECTION	COUNTY	TOTAL SHEETS	SHEET NO.
327	14-13RS	CLINTON	36	5
			CONTRACT NO. 76K64	
ILLINOIS FED. AID PROJECT				

MODEL: Default
 FILE NAME: p:\highwayroom.dwg
 ILLINOIS.GOV.PWDOT\Documents\DOT_Offices\District 8\Projects\ID7666\CAD\Drawings\ID7666-11-500.dgn

CODE NO.	ITEM	UNIT	TOTAL QUANTITY	CONSTRUCTION CODE		
				ROADWAY	BRIDGE	BRIDGE
				0005 RURAL	0047 014-0049	0047 014-0052
				80% FED 20% STATE		
70300260	TEMPORARY PAVEMENT MARKING - LINE 12"	FOOT	276	276		
70400100	TEMPORARY CONCRETE BARRIER	FOOT	730		490	240
70400200	RELOCATE TEMPORARY CONCRETE BARRIER	FOOT	730		490	240
70600250	IMPACT ATTENUATORS, TEMPORARY (NON- REDIRECTIVE), TEST LEVEL 3	EACH	4		2	2
70600350	IMPACT ATTENUATORS, RELOCATE (NON- REDIRECTIVE), TEST LEVEL 3	EACH	4		2	2
72501000	TERMINAL MARKER - DIRECT APPLIED	EACH	2	2		
* 78004200	PREFORMED PLASTIC PAVEMENT MARKING, TYPE B - INLAID - LETTERS AND SYMBOLS	SQ FT	63	63		
* 78004210	PREFORMED PLASTIC PAVEMENT MARKING, TYPE B - INLAID - LINE 4"	FOOT	54552	54552		
* 78004250	PREFORMED PLASTIC PAVEMENT MARKING, TYPE B - INLAID - LINE 12"	FOOT	276	276		
* 78004354	PREFORMED PLASTIC PAVEMENT MARKING, TYPE D - INLAID - LINE 4"	FOOT	1633	1633		
* 78100100	RAISED REFLECTIVE PAVEMENT MARKER	EACH	334	334		
78300200	RAISED REFLECTIVE PAVEMENT MARKER REMOVAL	EACH	334	334		
* 80300100	LOCATING UNDERGROUND CABLE	FOOT	50	50		

* SPECIALTY ITEM	USER NAME = dintelmanjn	DESIGNED -	REVISED -
		DRAWN -	REVISED -
	PLOT SCALE = 100.0000 ' / in.	CHECKED -	REVISED -
	PLOT DATE = 4/2/2020	DATE -	REVISED -

**STATE OF ILLINOIS
 DEPARTMENT OF TRANSPORTATION**

SUMMARY OF QUANTITIES			
SCALE:	SHEET	OF	SHEETS
	STA.	TO	STA.

F.A.P. RTE.	SECTION	COUNTY	TOTAL SHEETS	SHEET NO.
327	14-13RS	CLINTON	36	6
CONTRACT NO. 76K64				
ILLINOIS FED. AID PROJECT				

REV. - MS

MODEL: Default
 FILE NAME: \\w:\planroom\dot\illinois.gov\PIW\DOT\Documents\DOT_Offices\District_8\Projects\DP_76K64\CAD\Drawings\DP_76K64-sht-500.dgn

CODE NO.	ITEM	UNIT	TOTAL QUANTITY	CONSTRUCTION CODE		
				ROADWAY	BRIDGE	BRIDGE
				0005 RURAL	0047 014-0049	0047 014-0052
						80% FED 20% STATE
X2010505	CLEARING, SPECIAL	L SUM	1		0.5	0.5
X5870015	BRIDGE DECK CONCRETE SEALER	SQ FT	1721			1721
X7030005	TEMPORARY PAVEMENT MARKING REMOVAL	SQ FT	18523	18523		
Z0001905	STRUCTURAL STEEL REPAIR	POUND	1660		1660	
Z0004556	HOT-MIX ASPHALT SURFACE REMOVAL (DECK)	SQ YD	570			570
Z0016002	DECK SLAB REPAIR (FULL DEPTH, TYPE II)	SQ YD	50		20	30
Z0016200	DECK SLAB REPAIR (PARTIAL)	SQ YD	100		50	50
Z0021910	SILICONE JOINT SEALER, 2.25"	FOOT	164		164	
Z0033700	LONGITUDINAL JOINT SEALANT	FOOT	21047	20336	585	126
∅ Z0076600	TRAINEES	HOUR	2500	2500		
Z0034105	MATERIAL TRANSFER DEVICE	TON	12685	12685		
∅ Z0076604	TRAINEES TRAINING PROGRAM GRADUATE	HOUR	2500	2500		
Z0040530	PIPE UNDERDRAIN REMOVAL	FOOT	41566	41566		

∅ 0042

REV. - MS

USER NAME = dintelmanjn DESIGNED - DRAWN - PLOT SCALE = 100.0000 ' / in. CHECKED - PLOT DATE = 4/2/2020 DATE -	REVISED - REVISED - REVISED - REVISED -	STATE OF ILLINOIS DEPARTMENT OF TRANSPORTATION	SUMMARY OF QUANTITIES	F.A.P. RTE. 327 SECTION 14-13RS COUNTY CLINTON TOTAL SHEETS 36 SHEET NO. 7 CONTRACT NO. 76K64 ILLINOIS FED. AID PROJECT
SCALE: SHEET OF SHEETS STA. TO STA.				

PIPE UNDERDRAIN SCHEDULE							
RIGHT SIDE US 50		PIPE UNDERDRAINS TYPE 2, 4"	PIPE UNDERDRAINS 4" (SPECIAL)	CONCRETE HEADWALLS FOR PIPE DRAINS	SHOULDER REMOVAL AND REPLACEMENT	PPPM TYPE B - INLAID - LETTERS AND SYMBOLS	PIPE UNDERDRAIN REMOVAL
STATION	TO STATION	FOOT	FOOT	EACH	FOOT	SQ FT	FOOT
2772+87	TO 2777+50	463	18	1	471	1	481
2777+54	TO 2780+00	246	36	1	254	2	282
2780+00	TO 2782+50	250			258		250
2782+54	TO 2787+50	496	18	1	504	1	514
2787+54	TO 2792+50	496	18	1	504	1	514
2792+54	TO 2796+50	396	18	1	404	1	414
2796+54	TO 2801+50	496	18	1	504	1	514
2801+54	TO 2806+50	496	18	1	504	1	514
2806+54	TO 2811+50	496	18	1	504	1	514
2811+54	TO 2816+50	496	24	1	504	1	520
2816+54	TO 2821+50	496	26	1	504	1	522
2821+54	TO 2824+02	248	26	1	256	1	274
							0
2824+06	TO 2829+00	494	18	1	502	1	512
2829+04	TO 2834+00	496	18	1	504	1	514
2834+04	TO 2839+00	496	18	1	504	1	514
2839+04	TO 2844+00	496	18	1	504	1	514
2844+04	TO 2849+00	496	18	1	504	1	514
2849+04	TO 2854+00	496	18	1	504	1	514
	SUMMIT AT 2854+00						0
2854+04	TO 2858+84	480	7		488	1	487
2858+88	TO 2863+00	412	7		420	1	419
2863+04	TO 2867+00	396	18	1	404	1	414
2867+04	TO 2871+00	396	7		404	1	403
2871+04	TO 2876+00	496	18	1	504	1	514
2876+04	TO 2881+00	496	18	1	504	1	514
2881+04	TO 2886+00	496	18	1	504	1	514
2886+04	TO 2891+00	496	18	1	504	1	514
2891+04	TO 2896+00	496	18	1	504	1	514
2896+04	TO 2899+14	310	18	1	318	1	328
2900+51	TO 2905+50	499	18	1	507	1	517
2905+54	TO 2910+50	496	36	1	504	2	532
2910+50	TO 2915+50	500			508		500
2915+54	TO 2920+50	496	18	1	504	1	514
2920+54	TO 2925+50	496	18	1	504	1	514
2925+54	TO 2930+50	496	18	1	504	1	514
2930+54	TO 2935+00	446	18	1	454	1	464
2935+04	TO 2940+00	496	18	1	504	1	514
2940+04	TO 2945+00	496	18	1	504	1	514
2945+04	TO 2950+00	496	18	1	504	1	514
2950+04	TO 2955+00	496	36	1	504	2	532
2955+00	TO 2960+00	500			508		500
2960+04	TO 2965+00	496	18	1	504	1	514
2965+04	TO 2970+00	496	18	1	504	1	514
2970+04	TO 2975+96	592	18	1	600	1	610
	SUB-TOTA	20020	763	37	20364	43	20783

MODEL: Default
FILE: \\nrc-pix1plmroom.dta\illinois.gov\PIWDOT\Documents\DOT_Offices\Illin\ct B\Projects\076664\CADDData\CAD\Sheets\076664-14-Schedule.dgn

USER NAME = dintelmanjn	DESIGNED -	REVISED -
	DRAWN -	REVISED -
PLOT SCALE = 100.0000' / in.	CHECKED -	REVISED -
PLOT DATE = 4/2/2020	DATE -	REVISED -

**STATE OF ILLINOIS
DEPARTMENT OF TRANSPORTATION**

SCHEDULES OF QUANTITIES

SCALE: SHEET OF SHEETS STA. TO STA.

F.A.P. RTE.	SECTION	COUNTY	TOTAL SHEETS	SHEET NO.
327	14-13RS	CLINTON	36	14
CONTRACT NO. 76K64			ILLINOIS FED. AID PROJECT	

MILE	WESTBOUND LANE		CLASS A PATCHES				SAW CUTS		PATCHING	
			TY-I	TY-II	TY-III	TY-IV	HMA SHLDR	PCC SHLDR	REINFORCEMENT	TIE BARS
	LTH.	WTH.	SQ YDS	SQ YDS	SQ YDS	SQ YDS	FT	FT	SQ YDS	EACH
0	St. Rose Road Overpass									
0.2-0.3	12	12			16		73	84	16	
	6	12		8			61	66	8	
	40	12				53	129	168	53	18
	6	12		8			61	66	8	
	6	12		8			61	66	8	
	6	12		8			61	66	8	
	8	12		11			65	72	11	
	6	12		8			61	66	8	
	10	12		13			69	78	13	
	20	12				27	89	108	27	
	20	12				27	89	108	27	
	6	12		8			61	66	8	
	8	12		11			65	72	11	
0.3-0.4	6	12		8			61	66	8	
	8	12		11			65	72	11	
	6	12		8			61	66	8	
	6	12		8			61	66	8	
	40	12				53	129	168	53	18
0.4-0.5	320	12				427	689	1008	427	158
	120	12				160	289	408	160	58
	20	12				27	89	108	27	
0.5-0.6	50	12				67	149	198	67	23
	40	12				53	129	168	53	18
	40	12				53	129	168	53	18
	25	12				33	99	123	33	11
	120	12				160	289	408	160	58
	200	12				267	449	648	267	98
0.6-0.7	50	12				67	149	198	67	23
	100	12				133	249	348	133	48
	16	12				21	81	96	21	
	16	12				21	81	96	21	
0.7-0.8	6	12		8			61	66	8	
	80	12				107	209	288	107	38
	20	12				27	89	108	27	
	100	12				133	249	348	133	48
	50	12				67	149	198	67	23
	50	12				67	149	198	67	23
0.8-0.9	10	12		13			69	78	13	
	100	12				133	249	348	133	48
0.9-1.0	50	12				67	149	198	67	23
	100	12				133	249	348	133	48
	8	12		11			65	72	11	
	6	12		8			61	66	8	
	8	12		11			65	72	11	
	8	12		11			65	72	11	
1.0-1.1	200	12				267	449	648	267	98
	50	12				67	149	198	67	23
	6	12		8			61	66	8	
	6	12		8			61	66	8	
	40	12				53	129	168	53	18
1.1-1.2	8	12		11			65	72	11	
	30	12				40	109	138	40	13
	20	12				27	89	108	27	8
	6	12		8			61	66	8	
	6	12		8			61	66	8	
1.2-1.3	16	12			21		81	96	21	
	10	12		13			69	78	13	
	6	12		8			61	66	8	
	40	12				53	129	168	53	18
	30	12				40	109	138	40	
1.3-1.4	10	12		13			69	78	13	
	40	12				53	129	168	53	18
	6	12		8			61	66	8	
	10	12		13			69	78	13	
1.4	Little Prairie Creek Bridge						1	0	0	
1.4-1.5	8	12		11			65	72	11	
	6	12		8			61	66	8	
	40	12				53	129	168	53	18
	10	12		13			69	78	13	
1.5-1.6	10	12		13			69	78	13	
	6	12		8			61	66	8	
	12	12			16		73	84	16	
	12	12			16		73	84	16	
	12	12			16		73	84	16	
	50	12				67	149	198	67	23
	30	12				40	109	138	40	13
1.6-1.7	30	12				40	109	138	40	13
	6	12		8			61	66	8	
	6	12		8			61	66	8	
1.7-1.8	20	12				27	89	108	27	
	8	12		11			65	72	11	
	8	12		11			65	72	11	
	10	12		13			69	78	13	
	6	12		8			61	66	8	
	40	12				53	129	168	53	18
	160	12				213	369	528	213	78
SUB TOTAL			0	397	128	3433	10155	13035	3959	1159

MILE	WESTBOUND LANE		CLASS A PATCHES				SAW CUTS		PATCHING	
			TY-I	TY-II	TY-III	TY-IV	HMA SHLDR	PCC SHLDR	REINFORCEMENT	TIE BARS
	LTH.	WTH.	SQ YDS	SQ YDS	SQ YDS	SQ YDS	FT	FT	SQ YDS	EACH
1.8-1.9	20	12					89	108	27	
	20	12					89	108	27	
	10	12				13	69	78	13	
1.9	Schumacher Road Overpass						1	0	0	
1.9-2.0	16	12				21	81	96	21	
	25	12				33	99	123	33	11
	10	12				13	69	78	13	
	6	12				8	61	66	8	
	10	12				13	69	78	13	
	10	12				13	69	78	13	
	6	12				8	61	66	8	
	6	12				8	61	66	8	
2.0-2.1	20	12				27	89	108	27	
	12	12				16	73	84	16	
	50	12				67	149	198	67	23
	60	12				80	169	228	80	28
2.1-2.2	20	12				27	89	108	27	
	16	12				21	81	96	21	
	60	12				80	169	228	80	28
	16	12				21	81	96	21	
	100	12				133	249	348	133	48
2.2-2.3	6	12				8	61	66	8	
	10	12				13	69	78	13	
	6	12				8	61	66	8	
	160	12				213	369	528	213	78
	20	12				27	89	108	27	
	100	12				133	249	348	133	48
2.3-2.4	16	12				21	81	96	21	
	60	12				80	169	228	80	28
	6	12				8	61	66	8	
	12	12				16	73	84	16	
	10	12				13	69	78	13	
	6	12				8	61	66	8	
2.4-2.5	20	12				27	89	108	27	
	6	12				8	61	66	8	
	10	12				13	69	78	13	
	10	12				13	69	78	13	
2.5-2.6	20	12				27	89	108	27	
	6	12				8	61	66	8	
2.6-2.7	120	12				160	289	408	160	58
	10	12				13	69	78	13	
	6	12				8	61	66	8	
	6	12				8	61	66	8	
	20	12				27	89	108	27	
2.7-2.8	160	12				213	369	528	213	78
	20	16				36	105	124	36	
	20	16				36	105	124	36	
	20	16				36	105	124	36	
2.8-2.9	40	18				80	153	192	80	
	120	18				240	313	432	240	58
	30	18				60	133	162	60	13
	40	18				80	153	192	80	18
2.9	Russland Road						1	0	0	
2.9-3.0	30	18				60	133	162	60	13
	60	18								

MILE	WESTBOUND LANE		CLASS A PATCHES				SAW CUTS		PATCHING	
			TY-I	TY-II	TY-III	TY-IV	HMA SHLDR	PCC SHLDR	REINFORCEMENT	TIE BARS
	LTH.	WTH.	SQ YDS	SQ YDS	SQ YDS	SQ YDS	FT	FT	SQ YDS	EACH
3.7-3.8	10	12		13			69	78	13	
	6	12		8			61	66	8	
	12	12			16		73	84	16	
	6	12		8			61	66	8	
	6	12		8			61	66	8	
	6	12		8			61	66	8	
3.8	Sugar Creek Bridge							0	0	
SUB TOTAL			0	45	16	0	386	426	61	
WB TOTAL			0	776	365	6266	19602	12993	7408	1863

MILE	EASTBOUND LANE		CLASS A PATCHES				SAW CUTS		PATCHING	
			TY-I	TY-II	TY-III	TY-IV	HMA SHLDR	PCC SHLDR	REINFORCEMENT	TIE BARS
	LTH.	WTH.	SQ YDS	SQ YDS	SQ YDS	SQ YDS	FT	FT	SQ YDS	EACH
0	St. Rose Road Overpass						1	0	0	
0.2-0.3	6	12					61	66	8	
	16	12					81	96	21	
	20	12				21	89	108	27	
	6	12					61	66	8	
	6	12					61	66	8	
	12	12				16	73	84	16	
	80	12					209	288	107	38
	10	12					69	78	13	
	6	12					61	66	8	
	12	12				16	73	84	16	
	6	12					61	66	8	
	6	12					61	66	8	
	8	12					65	72	11	
	6	12					61	66	8	
	8	12					65	72	11	
0.3-0.4	30	12				40	109	138	40	13
	6	12					61	66	8	
	8	12					65	72	11	
	6	12					61	66	8	
	6	12					61	66	8	
	8	12					65	72	11	
	30	12				40	109	138	40	13
	6	12					61	66	8	
	8	12					65	72	11	
	6	12					61	66	8	
	6	12					61	66	8	
0.4-0.5	6	12					61	66	8	
	50	12					149	198	67	23
	8	12					65	72	11	
	8	12					65	72	11	
	8	12					65	72	11	
0.5-0.6	90	12					229	318	120	43
	20	12					89	108	27	
	8	12					65	72	11	
	12	12				16	73	84	16	
	100	12					249	348	133	48
	40	12					129	168	53	18
0.6-0.7	30	12					109	138	40	13
	40	12					129	168	53	18
	100	12					249	348	133	48
	8	12					65	72	11	
	12	12					73	84	16	
	6	12				8	61	66	8	
	30	12					109	138	40	13
	20	12					89	108	27	
0.7-0.8	12	12					73	84	16	
	80	12					209	288	107	38
	40	12					129	168	53	18
	8	12					65	72	11	
	6	12					61	66	8	
	20	12					89	108	27	
	12	12				16	73	84	16	
	70	12					189	258	93	33
0.8-0.9	20	12					89	108	27	
	6	12					61	66	8	
	20	12					89	108	27	
	100	12					249	348	133	48
	100	12					249	348	133	48
0.9-1.0	8	12					65	72	11	
	20	12					89	108	27	
	12	12					73	84	16	
	12	12					73	84	16	
	6	12					61	66	8	
	6	12					61	66	8	
	10	12					69	78	13	
1.0-1.1	6	12					61	66	8	
	40	12					129	168	53	18
	12	12					73	84	16	
	8	12					65	72	11	
1.1-1.2	16	12					81	96	21	
	6	12					61	66	8	
1.2-1.3	30	12					109	138	40	13
	6	12					61	66	8	
	20	12					89	108	27	
	16	12					81	96	21	
1.3-1.4	16	12					81	96	21	
	40	12					129	168	53	18
	30	12					109	138	40	13
	10	12					69	78	13	
1.4	Little Prairie Creek Bridge						1	0	0	
1.4-1.5	8	12					65	72	11	
	6	12					61	66	8	
	20	12					89	108	27	
	40	12					129	168	53	18
	100	12					249	348	133	48
SUB TOTAL			0	381	251	1960	8105	9960	2592	601

MODEL: Default
FILE: \\nrcs-pix\plannerroom\data\illinois.gov\PIWDOT\Documents\DOT_Offices\Dir\ctc @projects\0876664\CADDData\CAD\sheet\0876664-14-13r-schedule.dgn

USER NAME = dintelmanjn	DESIGNED -	REVISED -
	DRAWN -	REVISED -
PLOT SCALE = 100.0000 ' / in.	CHECKED -	REVISED -
PLOT DATE = 4/2/2020	DATE -	REVISED -

**STATE OF ILLINOIS
DEPARTMENT OF TRANSPORTATION**

SCHEDULES OF QUANTITIES

SCALE: SHEET OF SHEETS STA. TO STA.

F.A.P. RTE.	SECTION	COUNTY	TOTAL SHEETS	SHEET NO.
327	14-13RS	CLINTON	36	17
CONTRACT NO. 76K64				
ILLINOIS FED. AID PROJECT				

MILE	EASTBOUND LANE		CLASS A PATCHES				SAW CUTS		PATCHING		
			TY-I SQ YDS	TY-II SQ YDS	TY-III SQ YDS	TY-IV SQ YDS	HMA SHLDR	PCC SHLDR	REINFORCEMENT SQ YDS	TIE BARS EACH	
							FT	FT			
1.5-1.6	6	12		8			61	66	8		
	12	12			16		73	84	16		
	12	12			16		73	84	16		
1.6-1.7	80	12				107	209	288	107	38	
	6	12		8			61	66	8		
	20	12				27	89	108	27		
	6	12		8			61	66	8		
	6	12		8			61	66	8		
	240	12				320	529	768	320	118	
1.7-1.8	16	12			21		81	96	21		
	12	12			16		73	84	16		
	30	12				40	109	138	40	13	
	200	12				267	449	648	267	98	
1.8-1.9	6	12		8			61	66	8		
	40	12				53	129	168	53	18	
	100	12				133	249	348	133	48	
	10	12		13			69	78	13		
	6	12		8			61	66	8		
1.9	Schumacher Road Overpass						1	0	0		
1.9-2.0	16	12			21		81	96	21		
	40	12				53	129	168	53	18	
	6	12		8			61	66	8		
	40	12				53	129	168	53	18	
	30	12				40	109	138	40	13	
	30	12				40	109	138	40	13	
2.0-2.1	50	12				67	149	198	67	23	
	20	12				27	89	108	27	8	
	25	12				33	99	123	33	11	
	12	12			16		73	84	16		
	240	12				320	529	768	320	118	
2.1-2.2	12	12			16		73	84	16		
	16	12			21		81	96	21		
	80	12				107	209	288	107	38	
	20	12				27	89	108	27		
	6	12		8			61	66	8		
	20	12				27	89	108	27		
2.2-2.3	6	12		8			61	66	8		
	80	12				107	209	288	107	38	
	80	12				107	209	288	107	38	
	12	12			16		73	84	16		
2.3-2.4	6	12		8			61	66	8		
	16	12			21		81	96	21		
	6	12		8			61	66	8		
	30	12				40	109	138	40	13	
	6	12		8			61	66	8		
	6	12		8			61	66	8		
	30	12				40	109	138	40	13	
	6	12		8			61	66	8		
2.4-2.5	40	12				53	129	168	53	18	
	6	12		8			61	66	8		
	30	12				40	109	138	40	13	
	20	12				27	89	108	27		
2.6-2.6	20	12				27	89	108	27		
	20	12				27	89	108	27		
	12	12			16		73	84	16		
	12	12			16		73	84	16		
	20	12				27	89	108	27		
	6	12		8			61	66	8		
	6	12		8			61	66	8		
	6	12		8			61	66	8		
	6	12		8			61	66	8		
2.6-2.7	130	12				173	309	438	173	63	
	6	12		8			61	66	8		
	15	12			20		79	93	20		
	6	12		8			61	66	8		
	6	12		8			61	66	8		
	6	12		8			61	66	8		
	20	12				27	89	108	27		
	6	12		8			61	66	8		
	240	18				480	553	792	480	118	
2.7-2.8	40	18				80	153	192	80	18	
	60	18				120	193	252	120	28	
	6	18		12			85	90	12		
	20	18				40	113	132	40		
	40	18				80	153	192	80		
2.8-2.9	12	18			24		97	108	24		
	40	18				80	153	192	80	18	
2.9	Russland Road						1	0	0		
2.9-3.0	20	18				40	113	132	40		
	40	18				80	153	192	80	18	
	20	18				40	113	132	40		
	20	18				40	113	132	40		
	50	18				100	173	222	100	23	
3.0-3.1	40	18				80	153	192	80	18	
	20	16				36	105	124	36		
	30	16				53	125	154	53	13	
	20	14				31	97	116	31		
							1	0	0		
SUB TOTAL				0	217	273	3813	10361	13156	4304	1043

MILE	EASTBOUND LANE		CLASS A PATCHES				SAW CUTS		PATCHING					
			TY-I SQ YDS	TY-II SQ YDS	TY-III SQ YDS	TY-IV SQ YDS	HMA SHLDR	PCC SHLDR	REINFORCEMENT SQ YDS	TIE BARS EACH				
							FT	FT						
3.1-3.2	50	12					67	149	198	67	23			
	20	12					27	89	108	27				
	30	12					40	109	138	40	13			
	70	12					93	189	258	93	33			
	40	12					53	129	168	53	18			
3.2-3.3	60	12					80	169	228	80	28			
	20	12					27	89	108	27				
3.3-3.4	20	12					27	89	108	27				
	10	12			13		69	78	13					
3.4-3.5	40	12					53	129	168	53	18			
	10	12			13		69	78	13					
	6	12			8		61	66	8					
	15	12			20		79	93	20					
	8	12			11		65	72	11					
	6	12			8		61	66	8					
3.5-3.6	20	12					27	89	108	27				
	12	12					73	84	16					
	15	12			20		79	93	20					
	30	12					40	109	138	40	13			
	30	12					40	109	138	40	13			
	6	12			8		61	66	8					
3.6-3.7	40	12					53	129	168	53	18			
	6	12			8		61	66	8					
	10	12			13		69	78	13					
	20	12					27	89	108	27				
	20	12					27	89	108	27				
	6	12			8		61	66	8					
	20	12					27	89	108	27				
	6	12			8		61	66	8					
	10	12			13		69	78	13					
3.7-3.8	6	12					61	66	8					
	6	12					61	66	8					
3.8	Sugar Creek Bridge							0	0					
SUB TOTAL							0	128	56	707	2904	3540	891	177
EB TOTAL							0	726	580	6480	21370	26656	7787	1821
GRAND TOTAL							0	1502	945	12746	40972	36649	15195	15195

MODEL: Default
FILE: \\nrc-pix1pubroom.dta\illinois.gov\PIWDOT\Documents\DOT_Offices\Illintct @projects\076664\CADDData\CADsheets\076664-eh-schedule.dgn

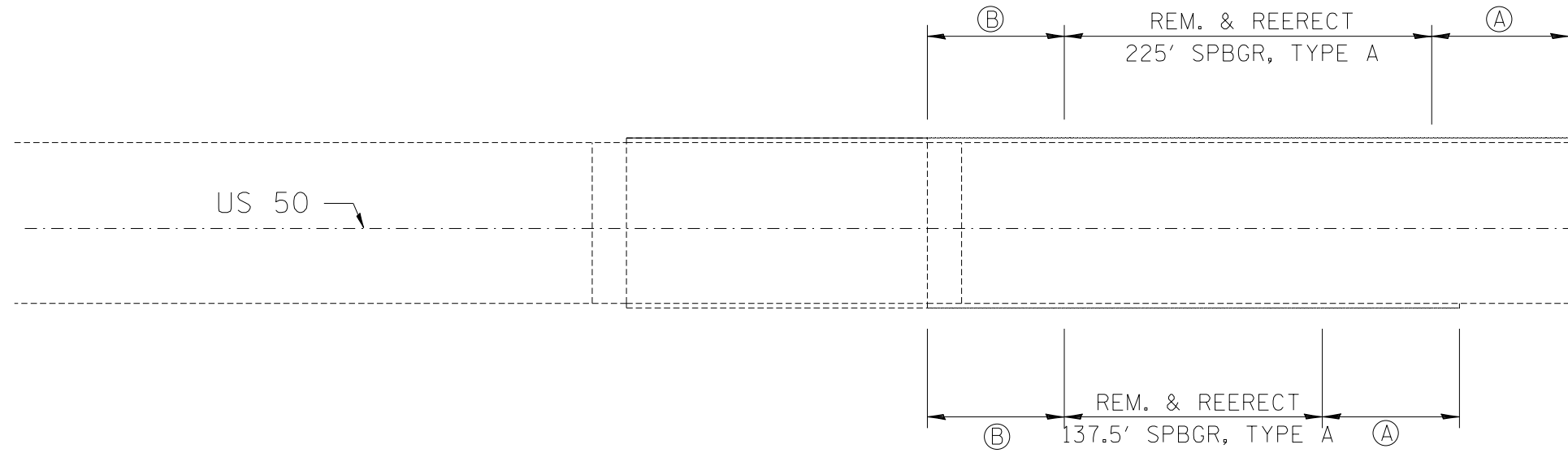
USER NAME = dintelmanjn	DESIGNED -	REVISED -
PLOT SCALE = 100.0000' / in.	DRAWN -	REVISED -
PLOT DATE = 4/2/2020	CHECKED -	REVISED -
	DATE -	REVISED -

**STATE OF ILLINOIS
DEPARTMENT OF TRANSPORTATION**

SCHEDULES OF QUANTITIES

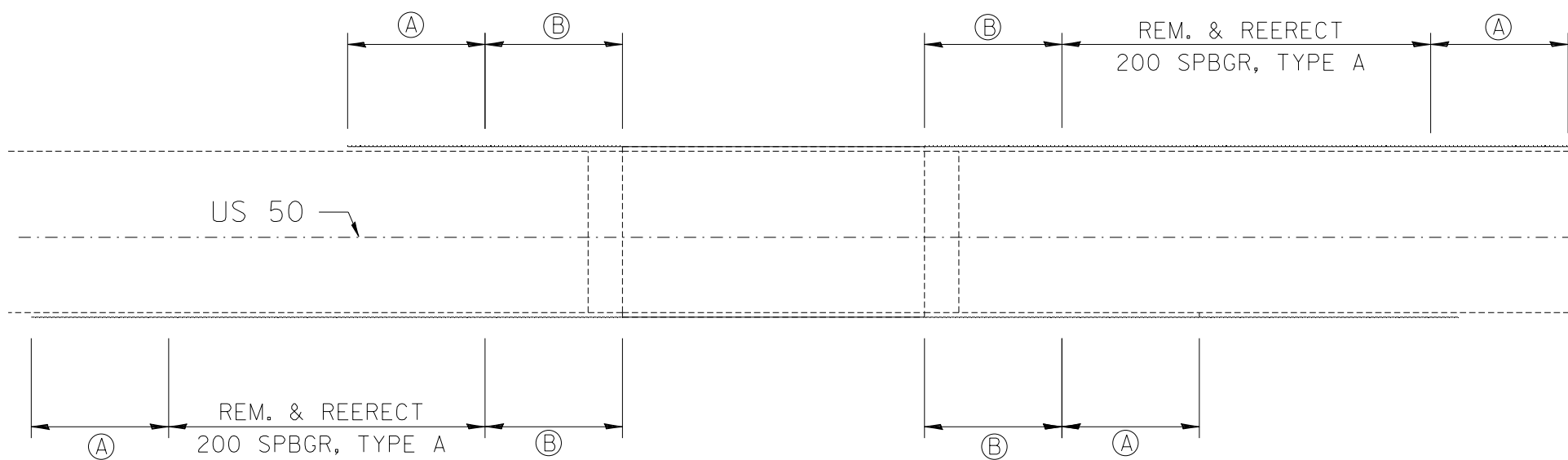
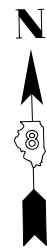
SCALE: SHEET OF SHEETS STA. TO STA.

F.A.P. RTE.	SECTION	COUNTY	TOTAL SHEETS	SHEET NO.
327	14-13RS	CLINTON	36	18
CONTRACT NO. 76K64				
ILLINOIS FED. AID PROJECT				



S.N. 014-0049

NOT TO SCALE



S.N. 014-0052

NOT TO SCALE

Ⓐ = TRAFFIC BARRIER TERM. TYPE 1
SPECIAL (TANGENT)

Ⓑ = TRAFFIC BARRIER TERM. TYPE 6

MODEL: Default
 FILE: \\nrcs-pix\plannerroom\data\illinois.gov\PIWIDOT\Documents\IDOT_Offices\IDOT\Projects\IDOT_7664\CADDData\CAD\Sheets\IDOT_7664-SP-14-049.dgn

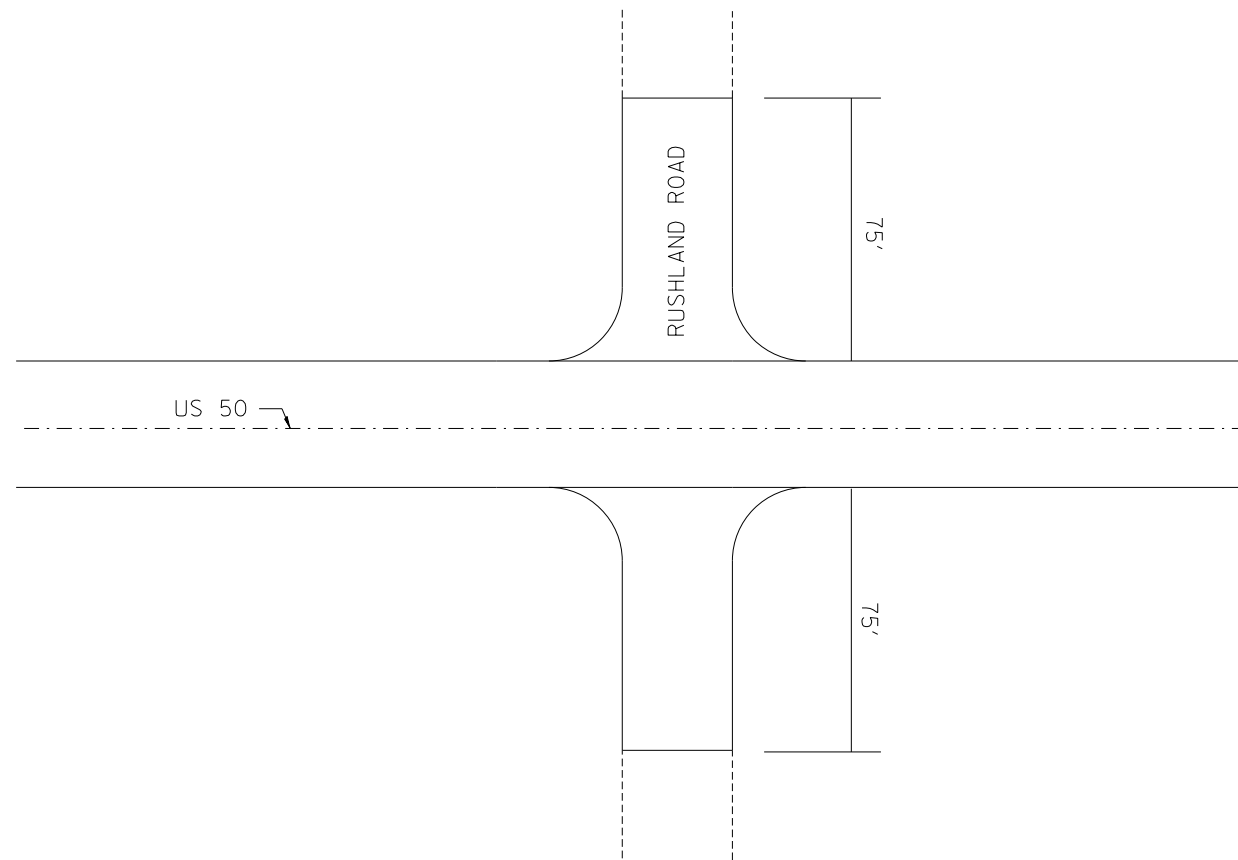
USER NAME = dintelmanjn	DESIGNED -	REVISED -
	DRAWN -	REVISED -
PLOT SCALE = 100.0000' / in.	CHECKED -	REVISED -
PLOT DATE = 4/2/2020	DATE -	REVISED -

**STATE OF ILLINOIS
DEPARTMENT OF TRANSPORTATION**

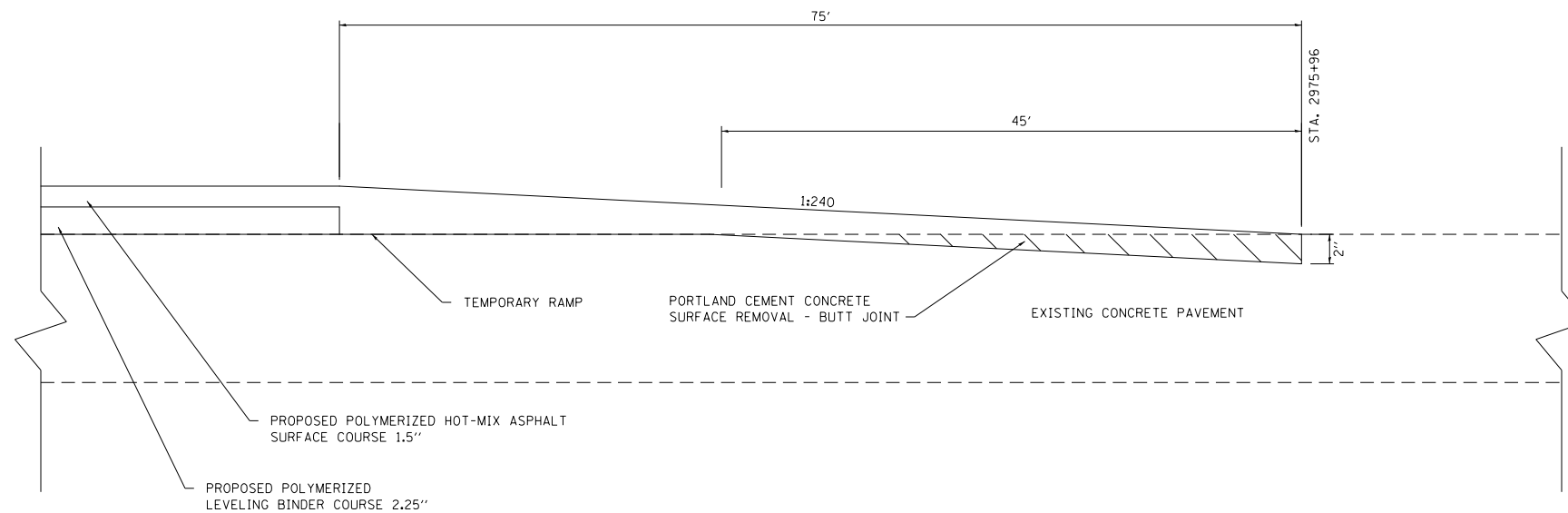
GUARDRAIL DETAILS

SCALE: SHEET OF SHEETS STA. TO STA.

F.A.P. RTE.	SECTION	COUNTY	TOTAL SHEETS	SHEET NO.
327	14-13RS	CLINTON	36	19
CONTRACT NO. 76K64				
ILLINOIS FED. AID PROJECT				



SIDE ROAD DETAIL
(PLAN VIEW)
NOT TO SCALE



SIDE ROAD DETAIL
(ELEVATION)
NOT TO SCALE

MODEL: Default
FILE: \\nrc\c:\p\planningroom\dat\illinois\gov\PHWDOT\Documents\DOT_Offices\District 8\Projects\ID76664\CADDData\CAD\Sheet\ID76664-14-Plan.dgn

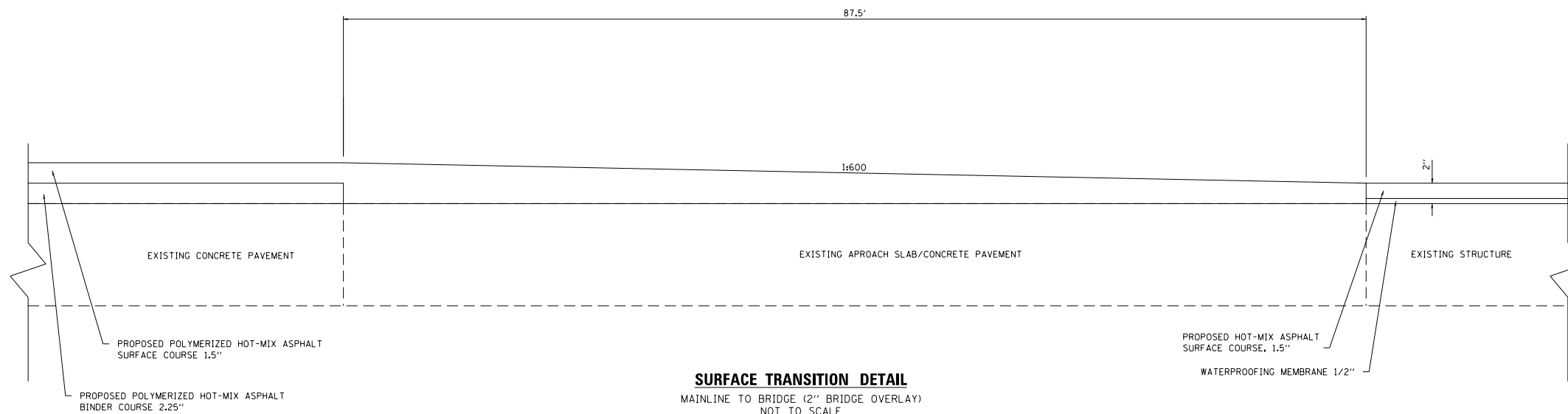
USER NAME = dintelmanjn	DESIGNED -	REVISED -
	DRAWN -	REVISED -
PLOT SCALE = 100.0000' / in.	CHECKED -	REVISED -
PLOT DATE = 4/2/2020	DATE -	REVISED -

**STATE OF ILLINOIS
DEPARTMENT OF TRANSPORTATION**

TRANSITION DETAILS

SCALE: SHEET OF SHEETS STA. TO STA.

F.A.P. RTE.	SECTION	COUNTY	TOTAL SHEETS	SHEET NO.
327	14-13RS	CLINTON	36	22
CONTRACT NO. 76K64				
ILLINOIS FED. AID PROJECT				



SURFACE TRANSITION DETAIL
 MAINLINE TO BRIDGE (2" BRIDGE OVERLAY)
 NOT TO SCALE

MODEL: Default
 FILE: \\nrcs-pix\plannerroom\data\illinois.gov\PIWIDOT\Documents\DOT_Offices\District 8\Projects\IDF76664\CADDData\CAD\Sheets\IDF76664-14-13R5.dgn

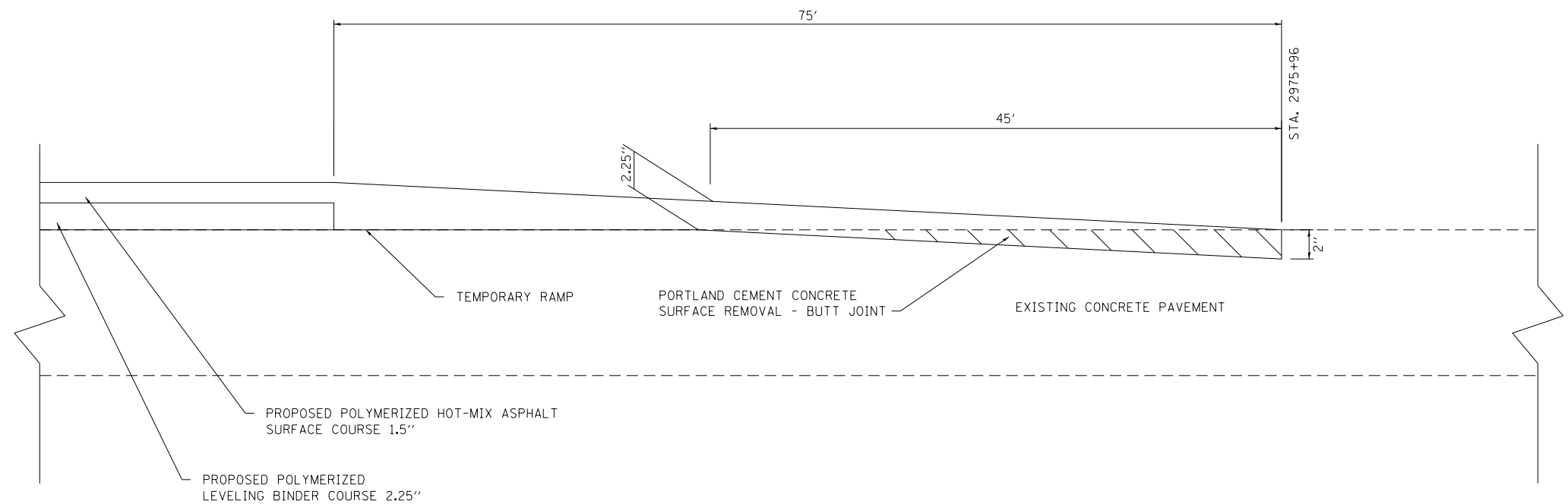
USER NAME = dintelmanjn	DESIGNED -	REVISED -
	DRAWN -	REVISED -
PLOT SCALE = 100.0000' / in.	CHECKED -	REVISED -
PLOT DATE = 4/2/2020	DATE -	REVISED -

**STATE OF ILLINOIS
 DEPARTMENT OF TRANSPORTATION**

TRANSITION DETAILS

SCALE: SHEET OF SHEETS STA. TO STA.

F.A.P. RTE.	SECTION	COUNTY	TOTAL SHEETS	SHEET NO.
327	14-13RS	CLINTON	36	23
CONTRACT NO. 76K64				
ILLINOIS FED. AID PROJECT				



END RESURFACING DETAIL
NOT TO SCALE

MODEL: Default
 FILE: Model_C:\p\plannerroom\dat\illinois.gov\PWIDOT\Documents\DOT_Offices\District 8\Projects\IDF76664\CADDData\CAD\Sheets\IDF76664-14-13R5.dgn

USER NAME = dintelmanjn	DESIGNED -	REVISED -
	DRAWN -	REVISED -
PLOT SCALE = 100.0000' / in.	CHECKED -	REVISED -
PLOT DATE = 4/2/2020	DATE -	REVISED -

**STATE OF ILLINOIS
DEPARTMENT OF TRANSPORTATION**

TRANSITION DETAILS

SCALE: SHEET OF SHEETS STA. TO STA.

F.A.P. RTE.	SECTION	COUNTY	TOTAL SHEETS	SHEET NO.
327	14-13R5	CLINTON	36	24
CONTRACT NO. 76K64				
		ILLINOIS	FED. AID PROJECT	

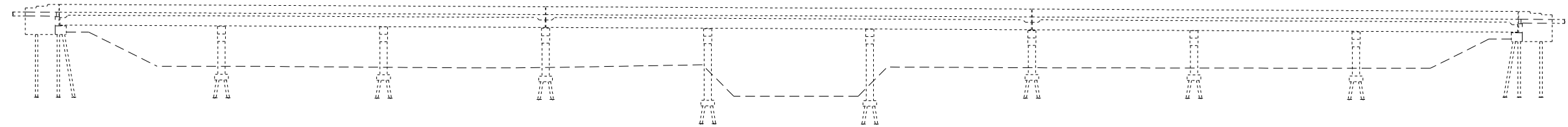
Existing Structure: 014-0049 was built in 1973 under contract 29332, FA Route 409 Sec 14-12B. It is a 9 span (3 - 3 span continuous) PPC I beams supported on pile bent abutments and piers on pile supported footings. In 1985 a microsilica overlay was added along with the pavement and approach construction under contract 40315. In 2011 the joints were replaced with strip seals under contract 76B27.

SCOPE OF WORK

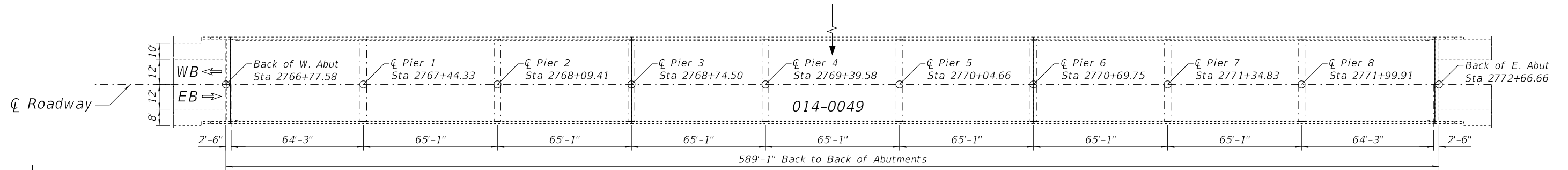
Weld 3/4" x 2" plates on top of existing strip seal rails.
 Install silicone joint sealer.
 Patch deck.
 Overlay the deck with waterproofing membrane system and HMA.

SHEET INDEX

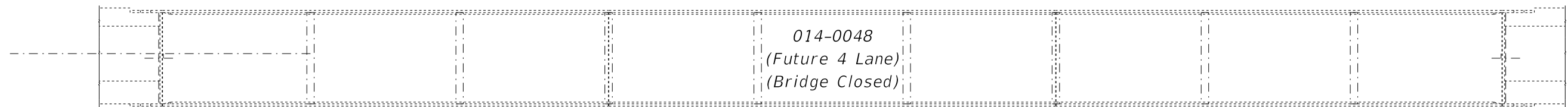
- 1) General Plan and Elevation
- 2) Deck Section & Joint Details
- 3) Temporary Concrete Barrier



ELEVATION



PLAN



GENERAL NOTES

Plan dimensions and details relative to existing plans are subject to nominal construction variations. The Contractor shall field verify existing dimensions and details affecting new construction and make necessary approved adjustments prior to construction or ordering of materials. Such variations shall not be cause for additional compensation for a change in scope of the work, however, the Contractor will be paid for the quantity actually furnished at the unit price bid for the work.

All new structural steel shall be AASHTO M 270 Grade 36 and hot dip galvanized. See special provision for "Hot Dip Galvanizing for Structural Steel".

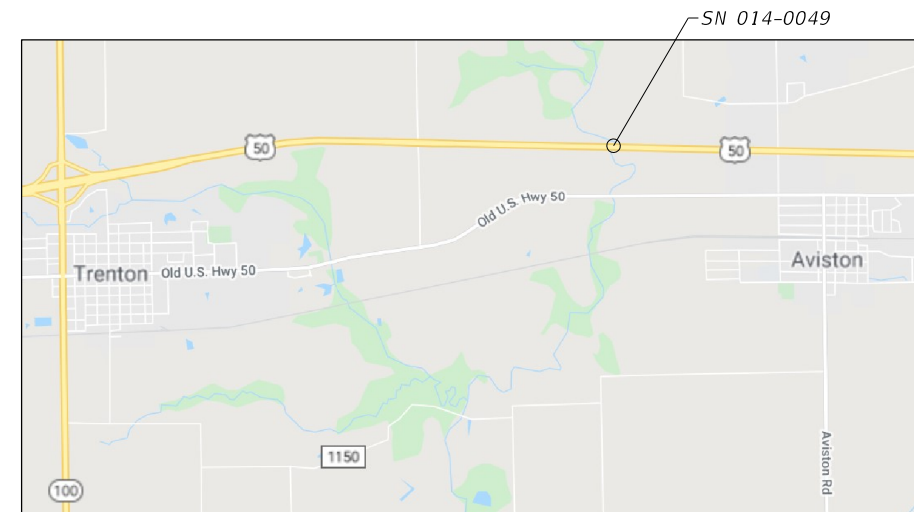
The bridge HMA is calculated based on 1 1/4", excluding 3/4" for the waterproofing membrane system.

The areas of deck repairs shown are estimated. The Engineer shall show actual locations of deck repairs on As-built plans.

Silicone gaps around all existing drains that were previously plugged and extended. See special provisions.

The pay item "Clearing, Special" is for removing all trees and brush taller than 3' under the bridge from abutment to abutment, and 10' wider than the bridge on each side. See special provisions.

The pay item "Bituminous Materials (Tack Coat)" is calculated using a rate of 0.025 psf on top of the waterproofing sand seal layer.



LOCATION SKETCH
TOTAL BILL OF MATERIAL

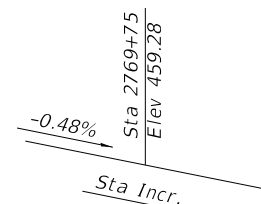
ITEM	UNIT	TOTAL
Bituminous Materials (Tack Coat)	Pound	563
Polymerized HMA Surface Course, IL-9.5FG, Mix "D", N90	Ton	175
Waterproofing Membrane System	Sq. Yd.	2502
Clearing, Special	L Sum	0.5
Structural Steel Repair	Pound	1660
Deck Slab Repair (Full Depth, Type II)	Sq. Yd.	20
Deck Slab Repair (Partial)	Sq. Yd.	50
Silicone Joint Sealer 2.25"	Foot	164.0
Longitudinal Joint Sealant	Foot	585



Expires 11-30-2020

David Carl Puzey

5/7/2020



PROFILE GRADE

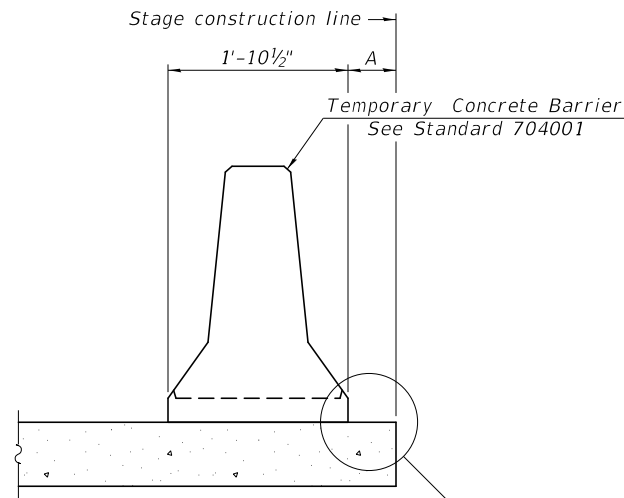
STATE OF ILLINOIS
DEPARTMENT OF TRANSPORTATION

GENERAL PLAN & ELEVATION
SN 014-0049

SHEET 1 OF 3 SHEETS

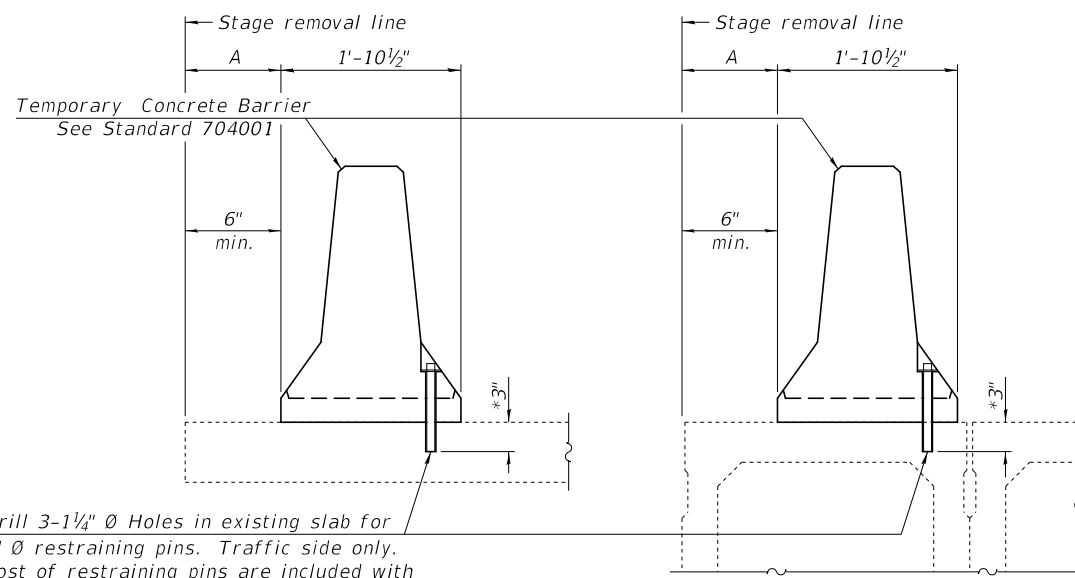
F.A.P. RTE.	SECTION	COUNTY	TOTAL SHEETS	SHEET NO.
327	14-13RS	CLINTON	36	25
CONTRACT NO. 76K64				

ILLINOIS FED. AID PROJECT



When "A" is 3'-1" or less, the temporary concrete barrier shall be restrained to the new slab according to Detail I, II or III. No restraint is required when "A" is greater than 3'-1".

NEW SLAB OR NEW DECK BEAM

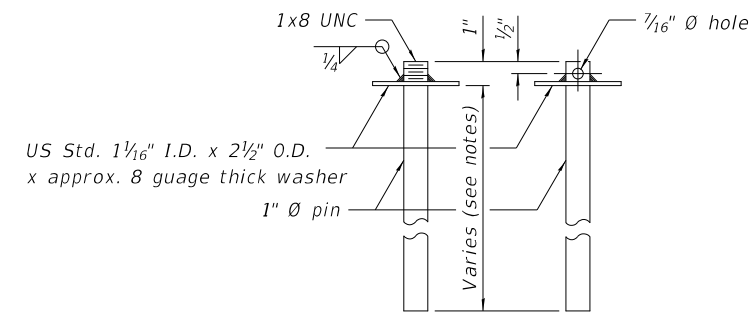


Drill 3-1/4" Ø Holes in existing slab for 1" Ø restraining pins. Traffic side only. Cost of restraining pins are included with Temporary Concrete Barrier. No restraint is required when "A" is greater than 3'-1".

EXISTING SLAB

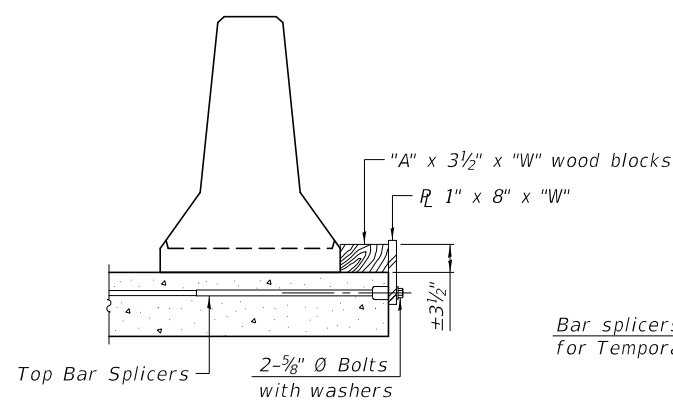
* When hot-mix asphalt wearing surface is present, embedment shall be 3" plus the wearing surface depth.

EXISTING DECK BEAM

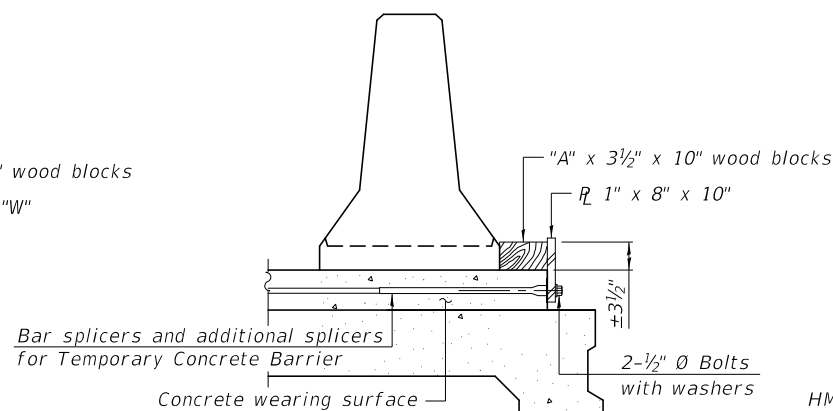


RESTRAINING PIN

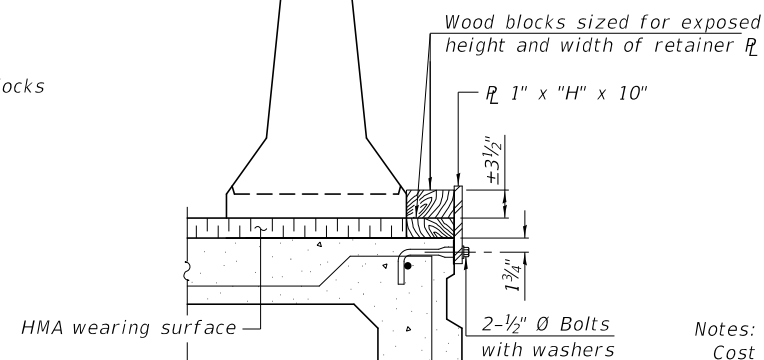
SECTIONS THRU SLAB OR DECK BEAM



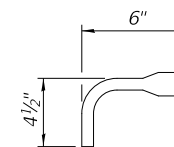
DETAIL I



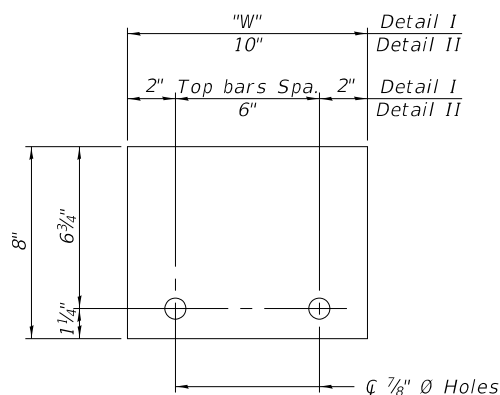
DETAIL II



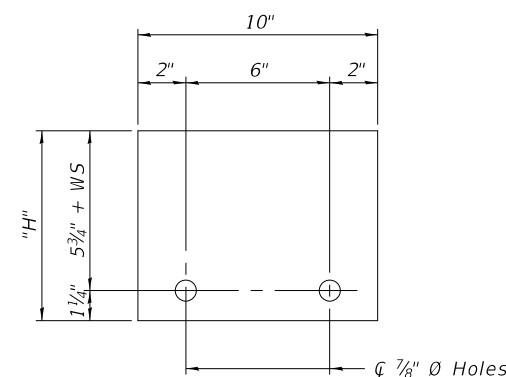
DETAIL III



BAR SPLICER FOR #4 BAR - DETAIL III



STEEL RETAINER R 1" x 8" x "W"
(Detail I and II)



STEEL RETAINER R 1" x "H" x 10"
(Detail III)

Notes:
 Cost of retainer assembly is included with Temporary Concrete Barrier.
 A retainer assembly shall be located at the approximate \bar{C} of each temporary concrete barrier.
 The retainer plate shall not be removed until the concrete on the adjacent stage is ready to be poured. For Detail III applications the retainer plate shall not be removed until just prior to placing the adjacent beam.
 When the 'A' dimension is less than 1 1/2', the wood block shall be omitted and the barrier shall be placed in direct contact with the steel retainer plate. For deck beam applications the minimum required 'A' distance is 6" to accommodate the shear key clamping device.

Detail I - Installation for a new bridge deck or bridge slab.
 Detail II - Installation for a new deck beam with an initial concrete wearing surface. Additional bar splicers shall be provided at 6'-0" centers and paired with the bar splicers of the concrete wearing surface reinforcement to accommodate the installation of the retainer assemblies. The cost of the additional bar splicers is included with the concrete wearing surface.
 Detail III - Installation for a new deck beam with no initial wearing surface or with an initial hot-mix asphalt (HMA) wearing surface present. The deck beam directly beneath the temporary concrete barrier shall be fabricated with bar splicer inserts in the side of the beam, as detailed, to accommodate the installation of the retainer assemblies. A pair of bar splicers, 6" apart, shall be placed at 6'-0" centers along the length of the beam. The cost of the bar splicers is included with the deck beam.

R-27 2-17-2017

USER NAME =	DESIGNED - John Uehle	REVISED -
CHECKED -	REVISIONS -	
PLOT SCALE =	DRAWN - John Uehle	REVISED -
PLOT DATE =	CHECKED -	REVISED -

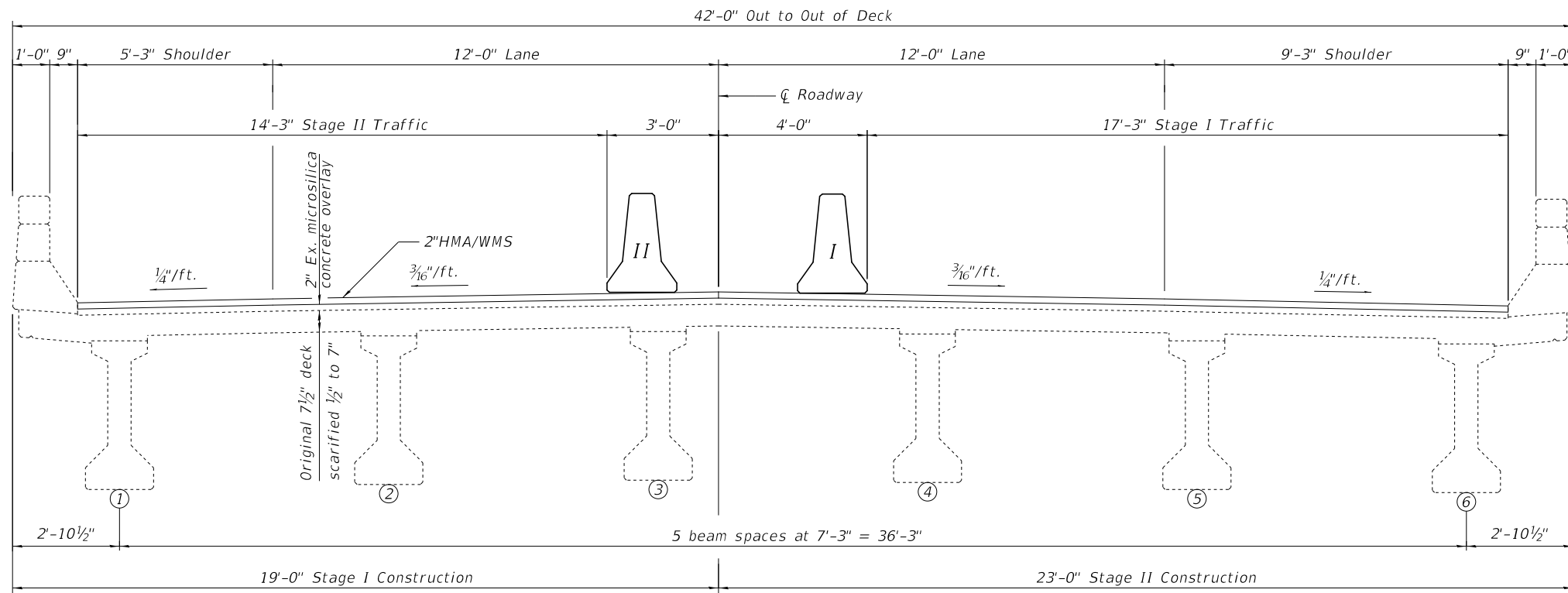
STATE OF ILLINOIS
DEPARTMENT OF TRANSPORTATION

TEMPORARY CONCRETE BARRIER FOR STAGE CONSTRUCTION
SN 014-0049

F.A.P. RTE.	SECTION	COUNTY	TOTAL SHEETS	SHEET NO.
327	14-13RS	CLINTON	36	26
CONTRACT NO. 76K64				

SHEET 3 OF 3 SHEETS

ILLINOIS FED. AID PROJECT

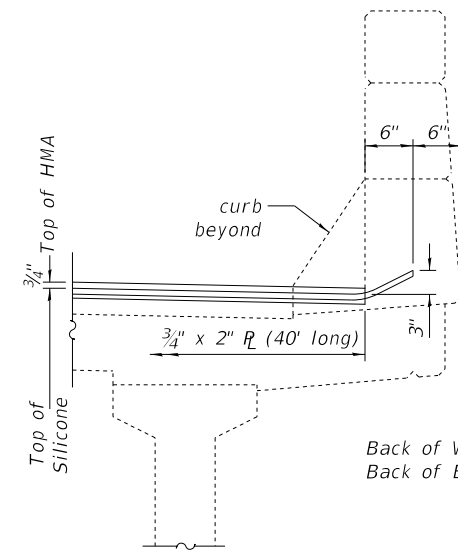


DECK SECTION

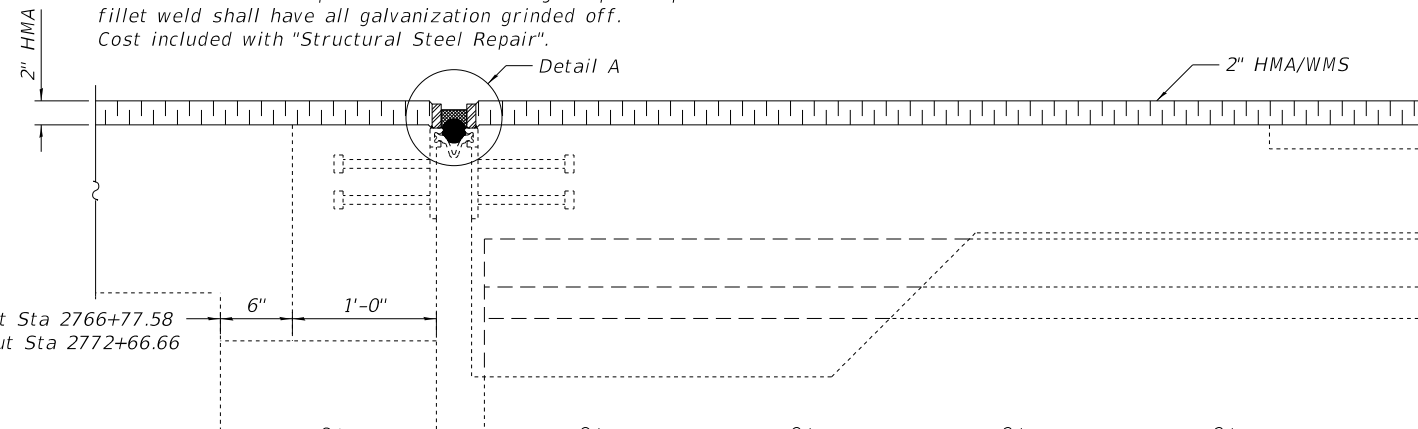
(Looking West - Downstation)

NOTES

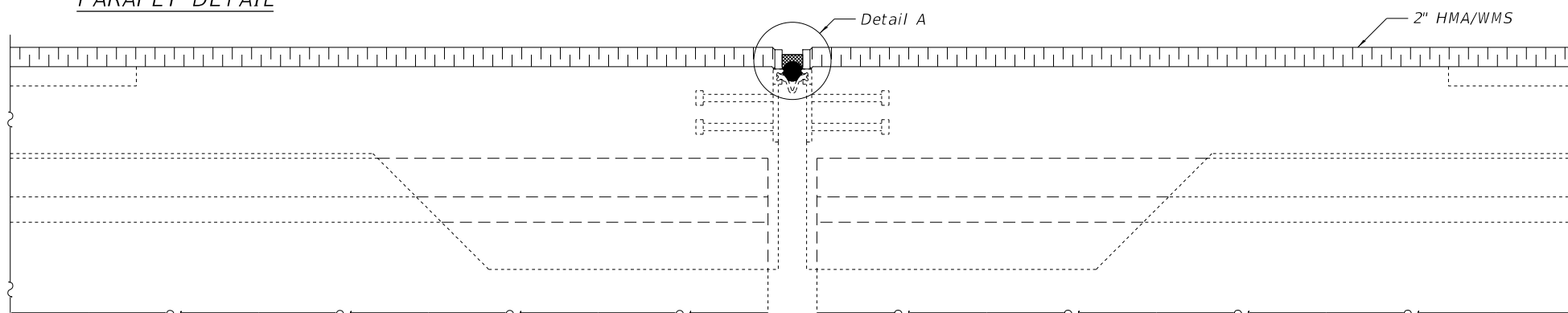
The 3/4" x 2" galvanized plates shall be fabricated to fit the crown.
 The maximum distance between segments shall be 1/4". Seal space with silicone sealant.
 Grind both bottom edges of new plates to 1/8" chamfers.
 All areas of the new plates and the existing strip seal plates in contact with the fillet weld shall have all galvanization grinded off.
 Cost included with "Structural Steel Repair".



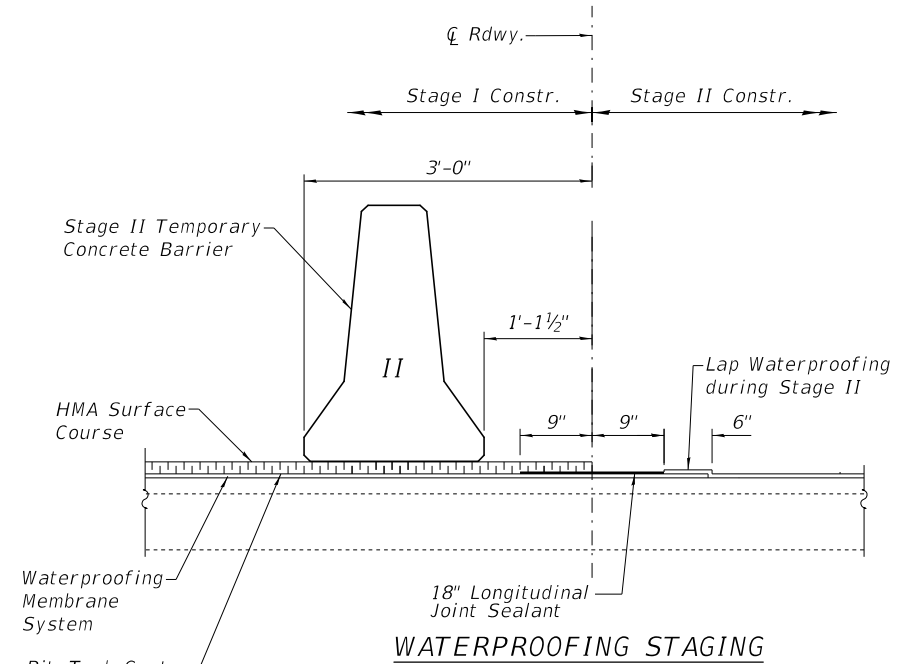
PARAPET DETAIL



ABUTMENT JOINT SECTION



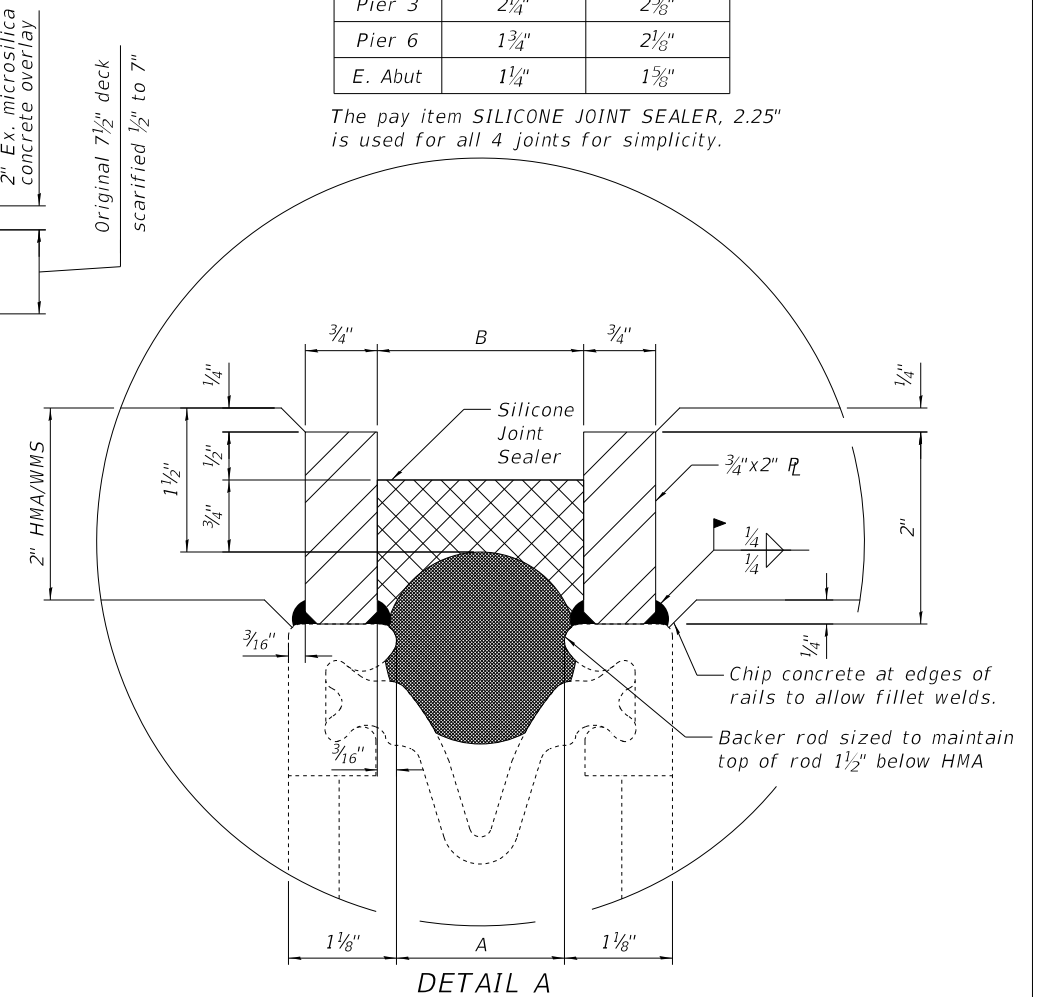
PIER 3 & 6 JOINT SECTION



WATERPROOFING STAGING

	Distance between strip seal rails at 50° "A"	Silicone width at 50° ("A" + 3/8") "B"
W. Abut	1 3/4"	2 1/8"
Pier 3	2 1/4"	2 5/8"
Pier 6	1 3/4"	2 1/8"
E. Abut	1 1/4"	1 5/8"

The pay item SILICONE JOINT SEALER, 2.25" is used for all 4 joints for simplicity.



DETAIL A

MODEL: 0140049-76K64-02
 FILE NAME: pw:\3\planroom\dot.illinois.gov\PW\DOT\Documents\DOT Offices\District 8\Projects\876K64\CAD\Drawings\Structures\0140049-76K64.dgn

USER NAME =	DESIGNED - John Uehle	REVISED -
PLOT SCALE =	CHECKED -	REVISED -
PLOT DATE =	DRAWN - John Uehle	REVISED -
	CHECKED -	REVISED -

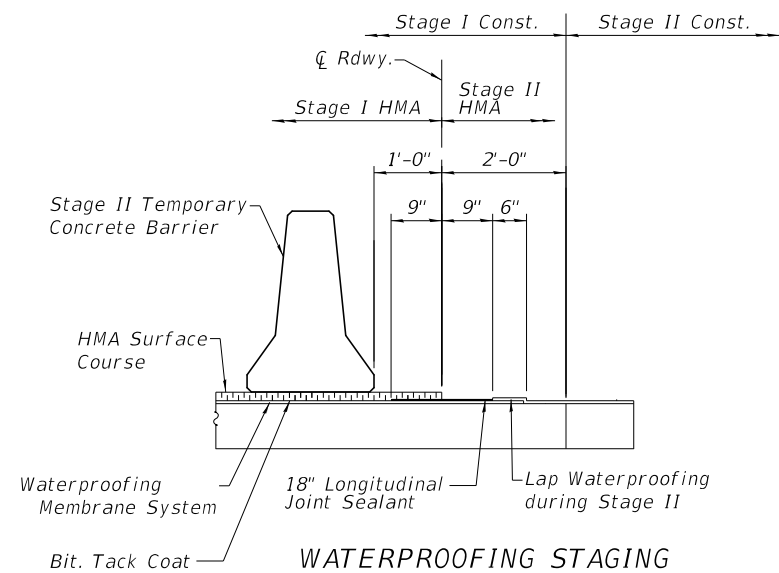
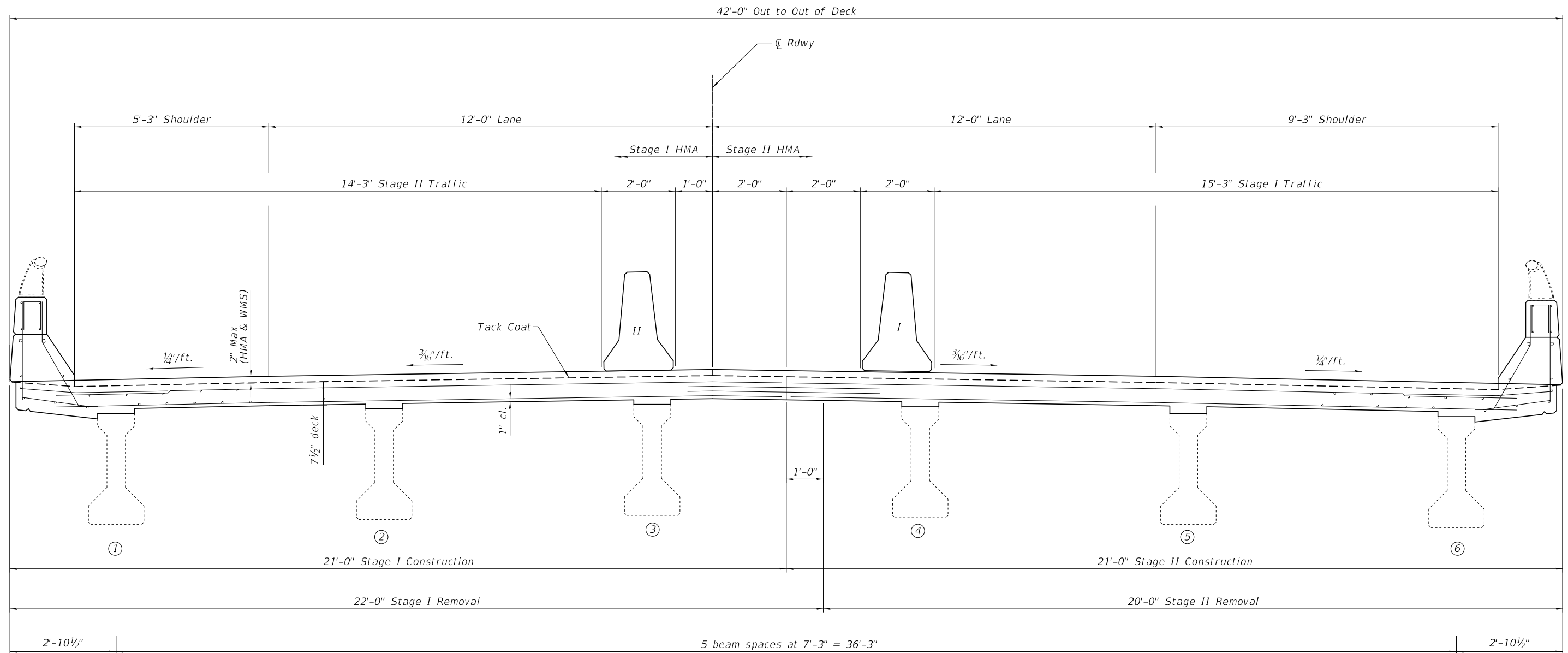
**STATE OF ILLINOIS
 DEPARTMENT OF TRANSPORTATION**

**DECK SECTION & JOINT DETAILS
 SN 014-0049**

SHEET 2 OF 3 SHEETS

F.A.P. RTE.	SECTION	COUNTY	TOTAL SHEETS	SHEET NO.
327	14-13RS	CLINTON	36	27
CONTRACT NO. 76K64				

ILLINOIS FED. AID PROJECT



CROSS SECTION

Looking West @ Joint Location

Note:

A tack coat, per Section 406, with a residual asphalt rate of 0.025 lb/ sq ft should be placed on top of the 1/2" thick Asphalt Sand Seal Protection Layer of the Waterproofing Membrane System, before the HMA surface is placed.

MODEL: 0140052-76K64-002
FILE NAME: p:\p\illinois\mtda\illinois\gov\p\illinois\DOT\Documents\DOT_Offices\Director\Projects\0140052-76K64.dgn

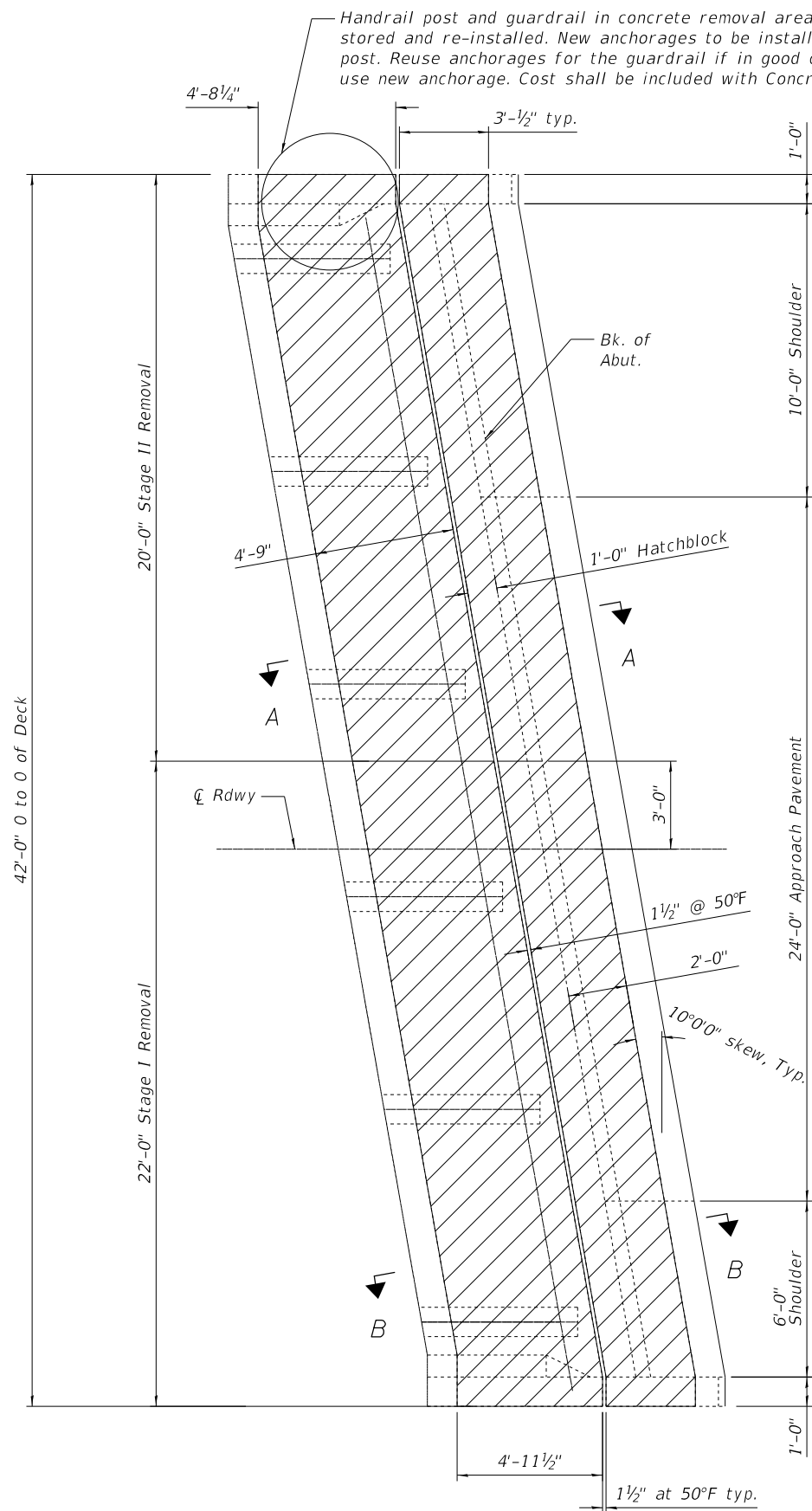
USER NAME = vinsonay	DESIGNED - AYW	REVISED -
	DRAWN - AYW	REVISED -
PLOT SCALE = 2:10,000 '"/in.	CHECKED - MWD	REVISED -
PLOT DATE = 3/16/2020	DATE -	REVISED -

**STATE OF ILLINOIS
DEPARTMENT OF TRANSPORTATION**

**DECK CROSS SECTION
SN 014-0052**

SCALE: SHEET 2 OF 9 SHEETS STA. TO STA.

F.A.P. RTE.	SECTION	COUNTY	TOTAL SHEETS	SHEET NO.
327	14-13RS	CLINTON	36	29
CONTRACT NO. 76K64				
ILLINOIS FED. AID PROJECT				



CONCRETE REMOVAL

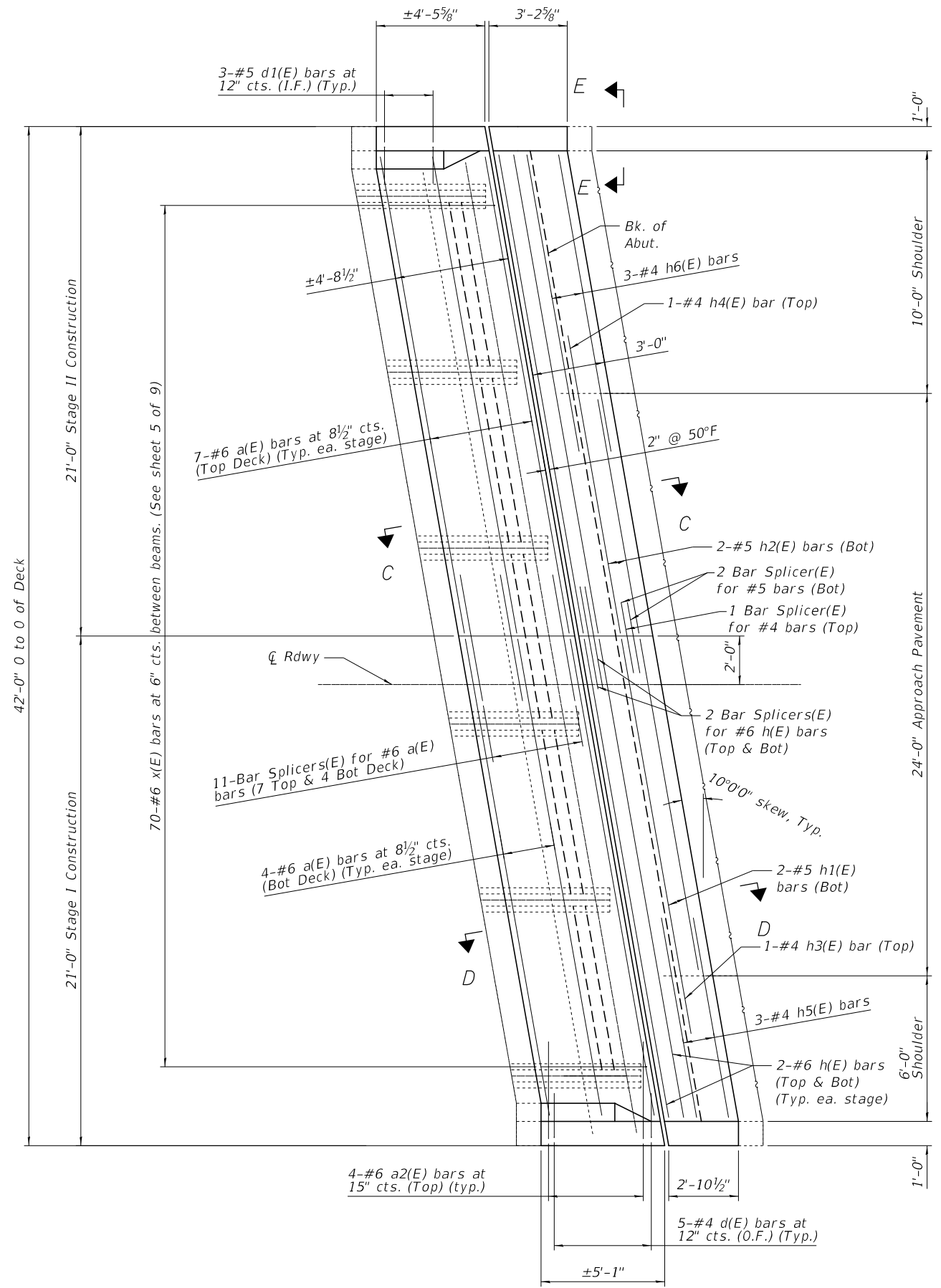
E. Abut. shown (W. Abut. similar)

Concrete Removal

Note:

No equipment or other loads shall be placed on the approach slab during removal and replacement of the 2' ends of approach.

See sheet 4 of 9 for Bill of Material, Section A-A, B-B, C-C & D-D & View E-E.



CONCRETE REPLACEMENT

E. Abut. shown (W. Abut. similar)

MODEL: 0140052-76K64-003
 FILE NAME: P:\gdm\comada\illinois\pwr\DOT\Documents\DOT_Offices\Illinet\B\Projects\076664\CADD\Structures\0140052-76K64.dgn

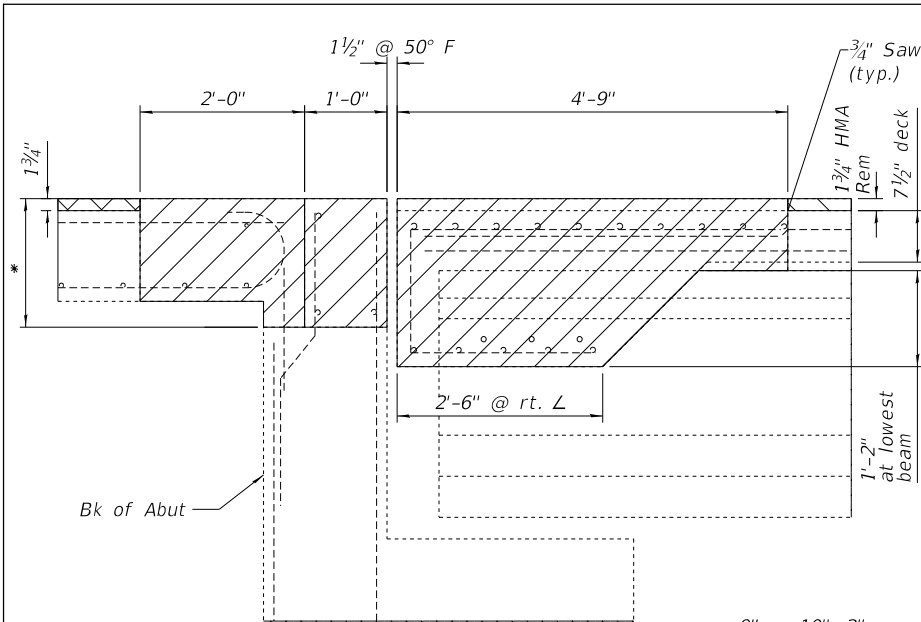
USER NAME = vinsonay	DESIGNED - AYW	REVISED -
	DRAWN - AYW	REVISED -
PLOT SCALE = 5:8.0000 '"/in.	CHECKED - MWD	REVISED -
PLOT DATE = 3/16/2020	DATE -	REVISED -

**STATE OF ILLINOIS
DEPARTMENT OF TRANSPORTATION**

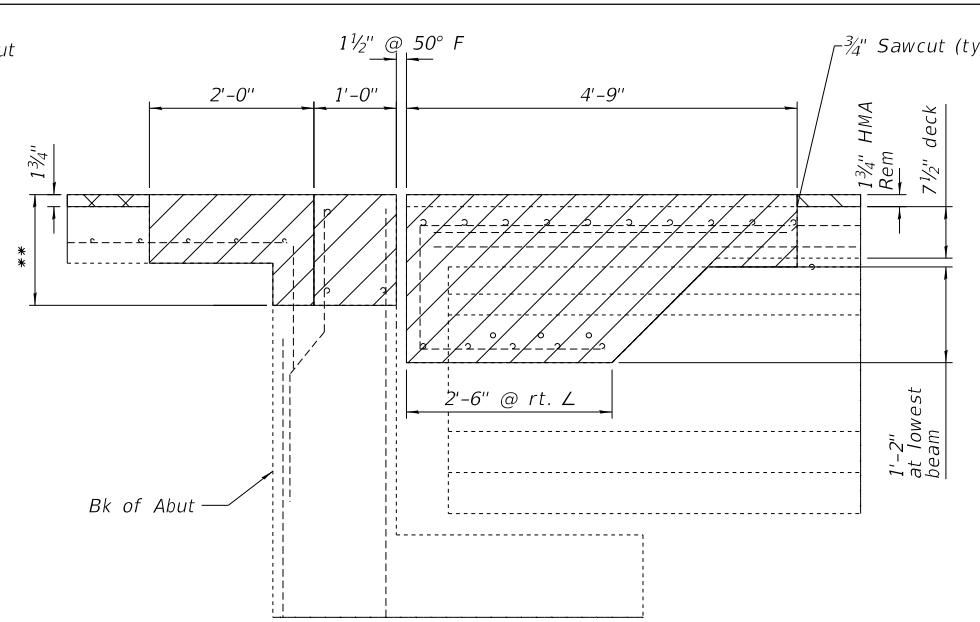
**JOINT REMOVAL & REPLACEMENT
SN 014-0052**

SCALE: SHEET 3 OF 9 SHEETS STA. TO STA.

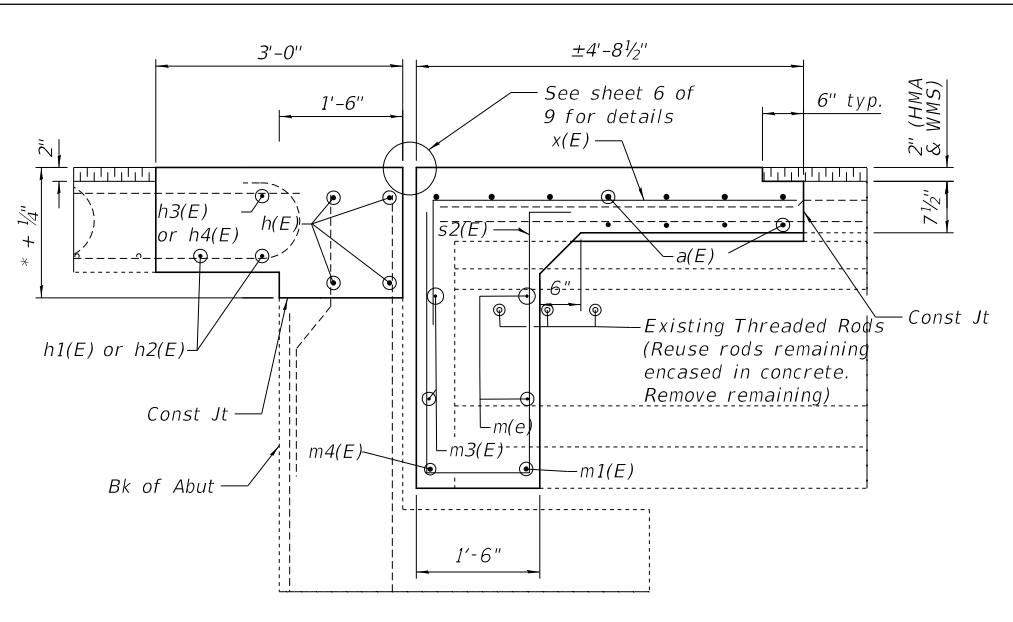
F.A.P. RTE. 327	SECTION 14-13RS	COUNTY CLINTON	TOTAL SHEETS 36	SHEET NO. 30
ILLINOIS FED. AID PROJECT			CONTRACT NO. 76K64	



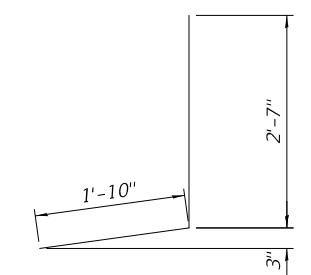
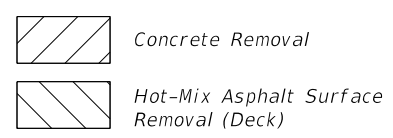
SECTION A-A
* Varies 16 1/8" to 18 3/4" C



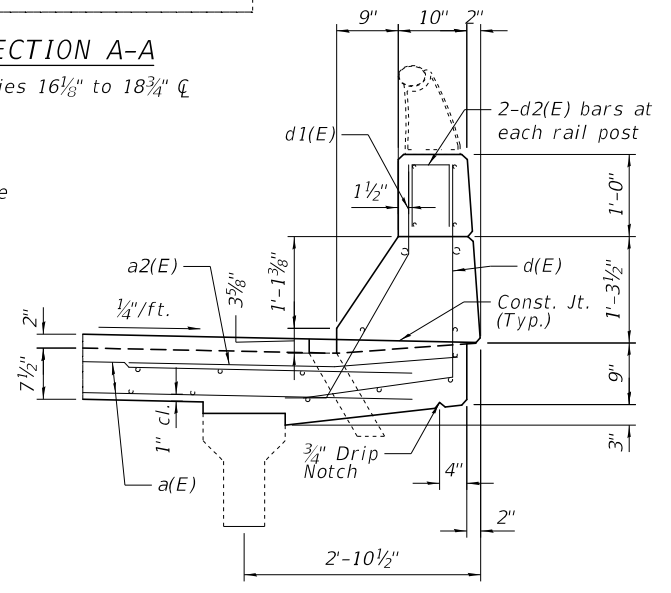
SECTION B-B
** Varies 13 7/8" to 16 1/8"



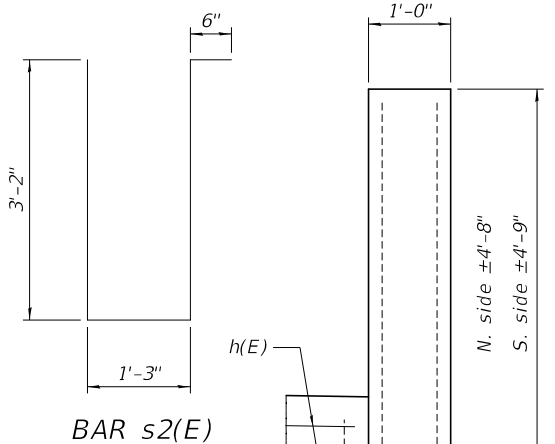
SECTION C-C
* Varies 16 1/8" to 18 3/4" C



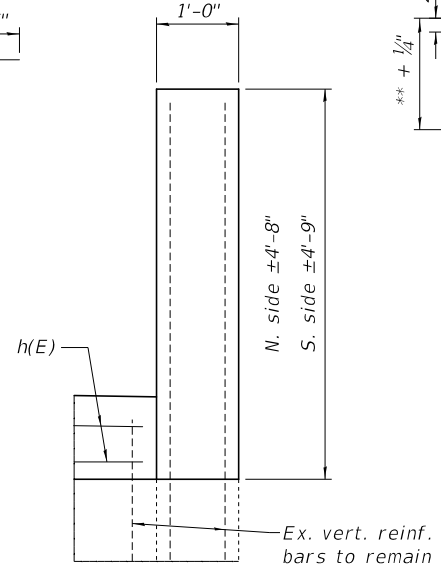
BAR d(E)



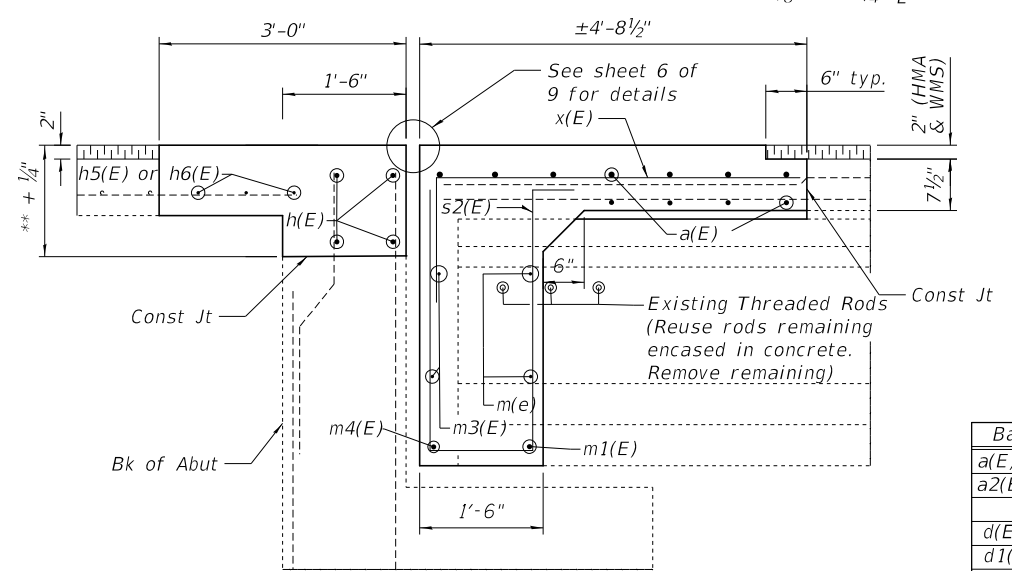
PARAPET SECTION



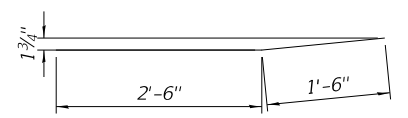
BAR s2(E)



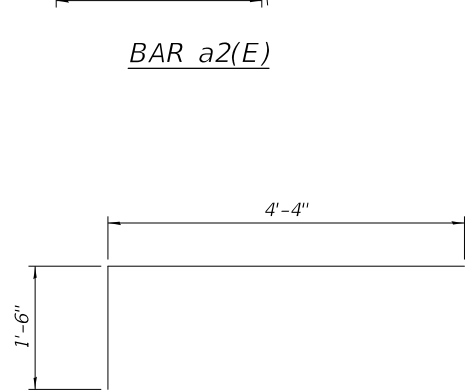
VIEW E-E



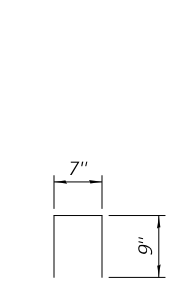
SECTION D-D
** Varies 13 7/8" to 16 1/8"



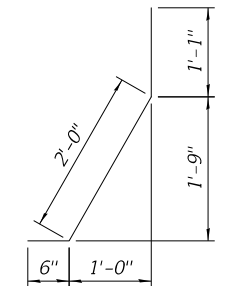
BAR a2(E)



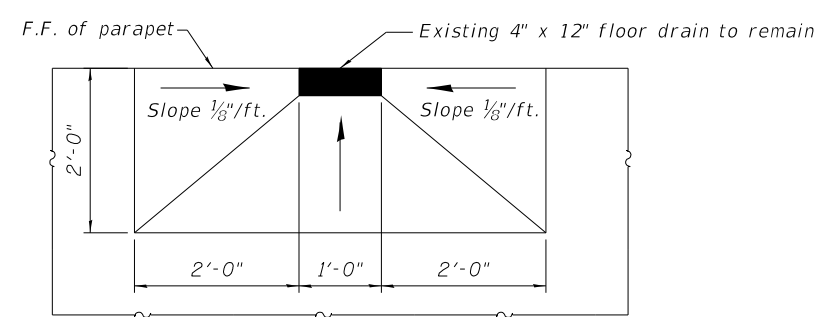
BAR x(E)



BAR d2(E)



BAR d1(E)



PARAPET SECTION

BILL OF MATERIAL

Bar	No.	Size	Length	Shape
a(E)	44	#6	19'-11"	—
a2(E)	16	#6	4'-0"	—
d(E)	20	#4	4'-5"	└
d1(E)	12	#5	3'-7"	└
d2(E)	8	#4	2'-1"	└
h(E)	16	#6	20'-0"	—
h1(E)	4	#5	13'-10"	—
h2(E)	4	#5	9'-9"	—
h3(E)	2	#4	13'-10"	—
h4(E)	2	#4	9'-9"	—
h5(E)	6	#4	8'-4"	—
h6(E)	6	#4	12'-5"	—
m(E)	16	#4	6'-6"	—
m1(E)	8	#6	5'-6"	—
m2(E)	8	#4	3'-1"	—
m3(E)	8	#4	20'-6"	—
m4(E)	4	#6	20'-6"	—
m5(E)	8	#4	2'-1"	—
m6(E)	4	#6	1'-7"	—
s2(E)	60	#4	8'-1"	└
x(E)	140	#6	5'-10"	—
Reinforcement Bars, Epoxy Coated		Pound	4180	
Concrete Superstructure		Cu. Yd.	41.6	
Concrete Removal		Cu. Yd.	37.1	

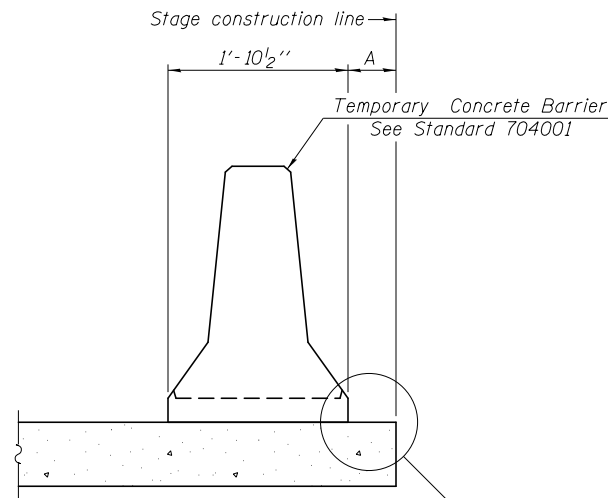
MODEL: 0140052-76664-001
FILE: \\mhc-pix\hmm\omada\illinois\pww\DOT\Documents\DOT - Offices\Illinois\B\Projects\076664\CADD\Structures\0140052-76664.dgn

USER NAME = vinsonay	DESIGNED - AYW	REVISED -
DRAWN - AYW	REVISIONS -	
PLOT SCALE = 2:4,0000 '"/in.	CHECKED - MWD	REVISIONS -
PLOT DATE = 3/16/2020	DATE -	REVISIONS -

**STATE OF ILLINOIS
DEPARTMENT OF TRANSPORTATION**

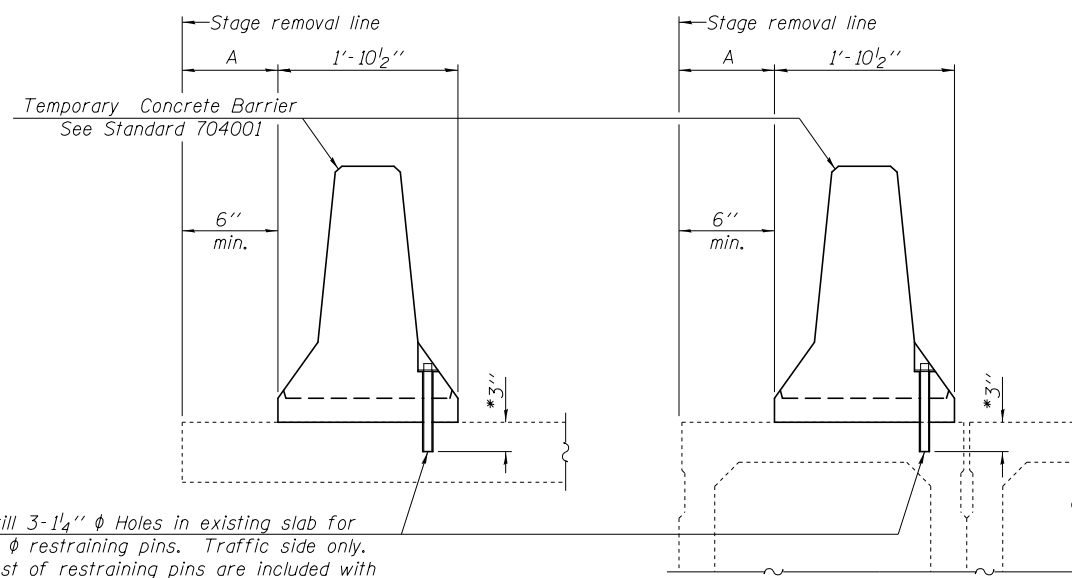
JOINT DETAILS & WATERPROOFING STAGING
SN 014-0052
SCALE: SHEET 4 OF 9 SHEETS STA. TO STA.

F.A.P. RTE. 327	SECTION 14-13RS	COUNTY CLINTON	TOTAL SHEETS 36	SHEET NO. 31
ILLINOIS FED. AID PROJECT			CONTRACT NO. 76K64	



When "A" is 3'-1" or less, the temporary concrete barrier shall be restrained to the new slab according to Detail I, II or III. No restraint is required when "A" is greater than 3'-1".

NEW SLAB OR NEW DECK BEAM



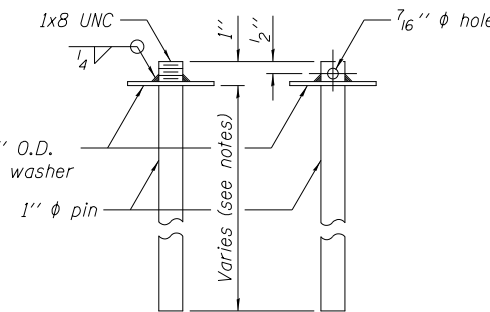
Drill 3-1/4" ϕ Holes in existing slab for 1" ϕ restraining pins. Traffic side only. Cost of restraining pins are included with Temporary Concrete Barrier. No restraint is required when "A" is greater than 3'-1".

EXISTING SLAB

* When hot-mix asphalt wearing surface is present, embedment shall be 3" plus the wearing surface depth.

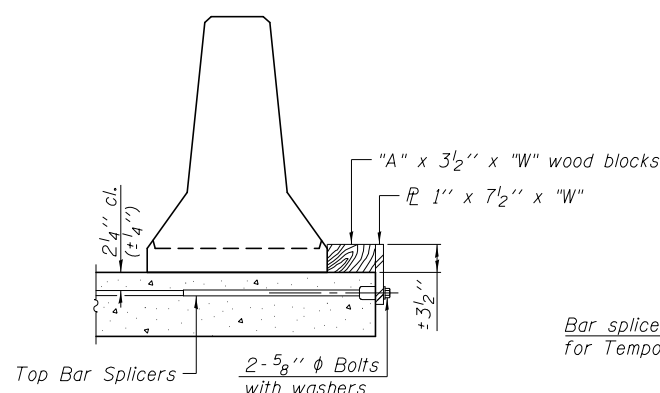
EXISTING DECK BEAM

SECTIONS THRU SLAB OR DECK BEAM

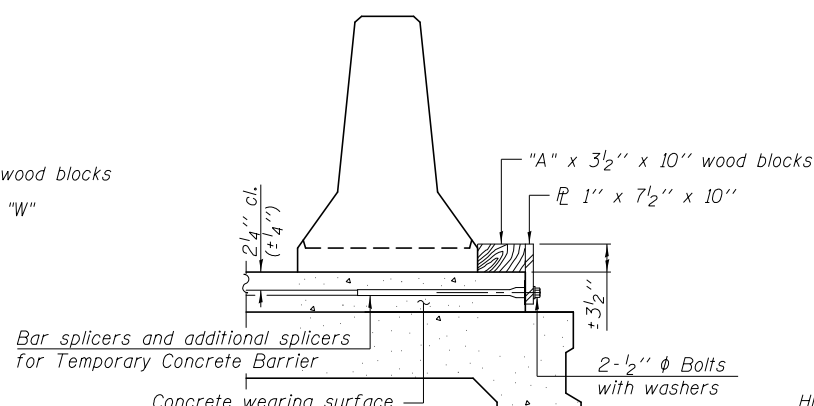


US Std. 1 1/16" I.D. x 2 1/2" O.D. x approx. 8 gauge thick washer

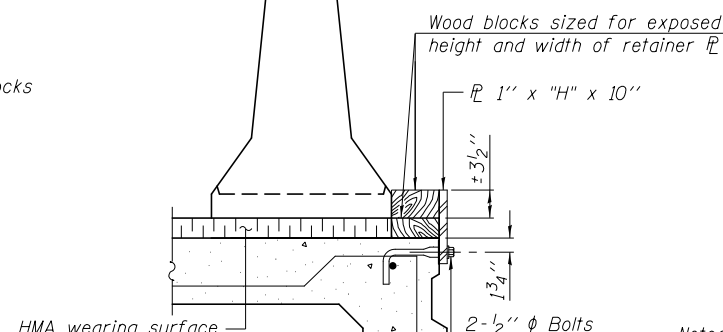
RESTRAINING PIN



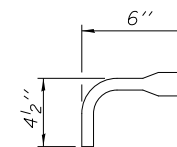
DETAIL I



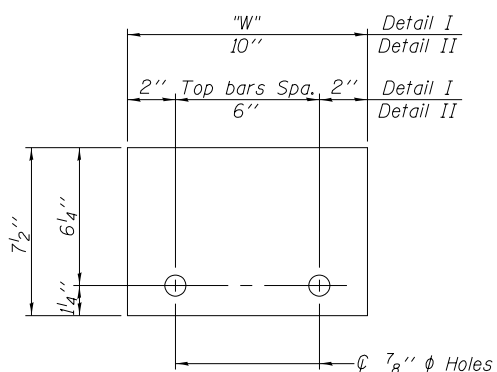
DETAIL II



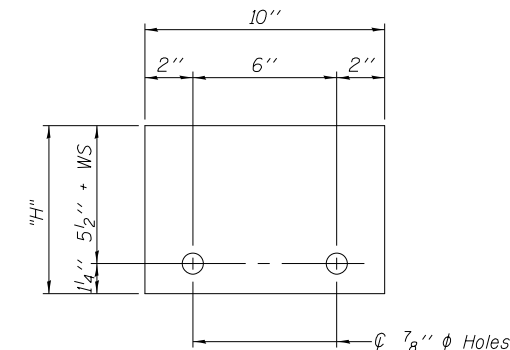
DETAIL III



BAR SPLICER FOR #4 BAR - DETAIL III



STEEL RETAINER 1" x 7 1/2" x "W"
(Detail I and II)



STEEL RETAINER 1" x "H" x 10"
(Detail III)

Notes:
 Cost of retainer assembly is included with Temporary Concrete Barrier.
 A retainer assembly shall be located at the approximate ϕ of each temporary concrete barrier.
 The retainer plate shall not be removed until the concrete on the adjacent stage is ready to be poured. For Detail III applications the retainer plate shall not be removed until just prior to placing the adjacent beam.
 When the 'A' dimension is less than 1 1/2", the wood block shall be omitted and the barrier shall be placed in direct contact with the steel retainer plate. For deck beam applications the minimum required 'A' distance is 6" to accommodate the shear key clamping device.

Detail I - Installation for a new bridge deck or bridge slab.
 Detail II - Installation for a new deck beam with an initial concrete wearing surface. Additional bar splicers shall be provided at 6'-0" centers and paired with the bar splicers of the concrete wearing surface reinforcement to accommodate the installation of the retainer assemblies. The cost of the additional bar splicers is included with the concrete wearing surface.
 Detail III - Installation for a new deck beam with no initial wearing surface or with an initial hot-mix asphalt (HMA) wearing surface present. The deck beam directly beneath the temporary concrete barrier shall be fabricated with bar splicer inserts in the side of the beam, as detailed, to accommodate the installation of the retainer assemblies. A pair of bar splicers, 6" apart, shall be placed at 6'-0" centers along the length of the beam. The cost of the bar splicers is included with the deck beam.

MODEL: 0140052-76K64-007
 FILE NAME: p:\p\illinois\0140052-76K64\CADD\Drawings\Structures\0140052-76K64.dgn

R-27 11-22-2016

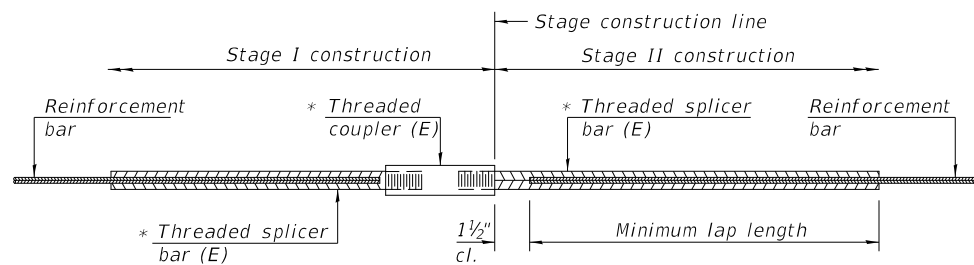
USER NAME = vinsonay	DESIGNED - AYW	REVISED -
DRAWN - AYW	CHECKED - MWD	REVISED -
PLOT SCALE = 0:2.0000 ' = 1" / in.	DATE -	REVISED -
PLOT DATE = 3/16/2020		

STATE OF ILLINOIS
 DEPARTMENT OF TRANSPORTATION

TEMPORARY CONCRETE BARRIER FOR STAGE CONSTRUCTION
 STRUCTURE NO. 014-0052

SCALE: SHEET 7 OF 9 SHEETS STA. TO STA.

F.A.P. RTE. 327	SECTION 14-13RS	COUNTY CLINTON	TOTAL SHEETS 36	SHEET NO. 34
ILLINOIS FED. AID PROJECT			CONTRACT NO. 76K64	

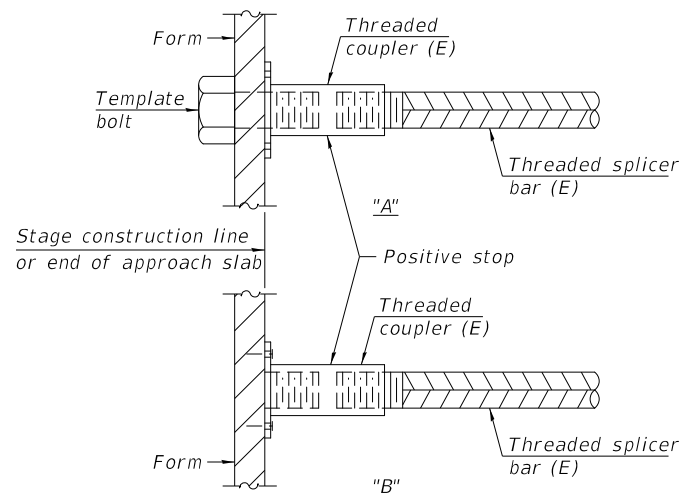


STANDARD BAR SPLICER ASSEMBLY

Threaded splicer bar length = min. lap length + 1 1/2" + thread length

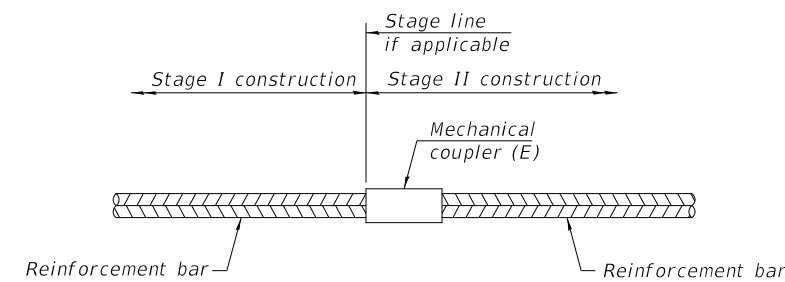
* Epoxy not required on Bar Splicer Assembly components used in conjunction with black bars.

Location	Bar size	No. assemblies required	Minimum lap length
W. Hatchblock	#6	4	5'-0"
W. Abut. (Deck)	#6	11	5'-0"
W. Diaph. @ Abut.	#4	4	3'-0"
W. Diaph. @ Abut.	#6	2	5'-0"
W. Appr Pavement	#5	2	3'-0"
W. Appr Pavement	#4	1	3'-0"
E. Appr Pavement	#4	1	3'-0"
E. Appr Pavement	#5	2	3'-0"
E. Diaph. @ Abut.	#6	2	5'-0"
E. Diaph. @ Abut.	#4	4	3'-0"
E. Abut. (Deck)	#6	11	5'-0"
E. Hatchblock	#6	4	5'-0"



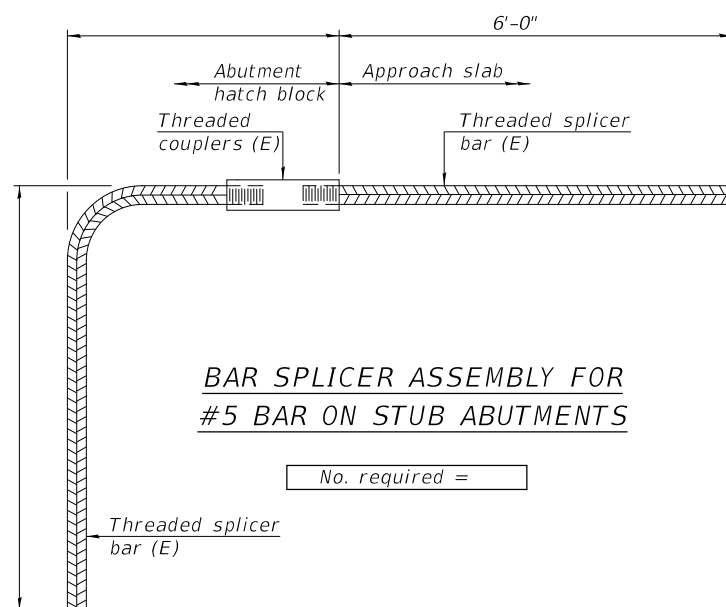
INSTALLATION AND SETTING METHODS

"A" : Set bar splicer assembly by means of a template bolt.
 "B" : Set bar splicer assembly by nailing to wood forms or cementing to steel forms.
 (E) : Indicates epoxy coating.



STANDARD MECHANICAL SPLICER

Location	Bar size	No. assemblies required



BAR SPLICER ASSEMBLY FOR #5 BAR ON STUB ABUTMENTS

No. required =

NOTES

Splicer bars shall be deformed with Threaded ends and have a minimum 60 ksi yield strength.
 All reinforcement shall be lapped and tied to the splicer bars.
 Bar splicer assemblies shall be epoxy coated according to the requirements for reinforcement bars. See Section 508 of the Standard Specifications.
 See approved list of bar splicer assemblies and mechanical splicers for alternatives.

BSD-1 2-17-2017

USER NAME = vinsonay	DESIGNED - AYW	REVISED -
PLOT SCALE = 0:2.0000 '"/in.	CHECKED -	REVISED -
PLOT DATE = 3/16/2020	DATE -	REVISED -

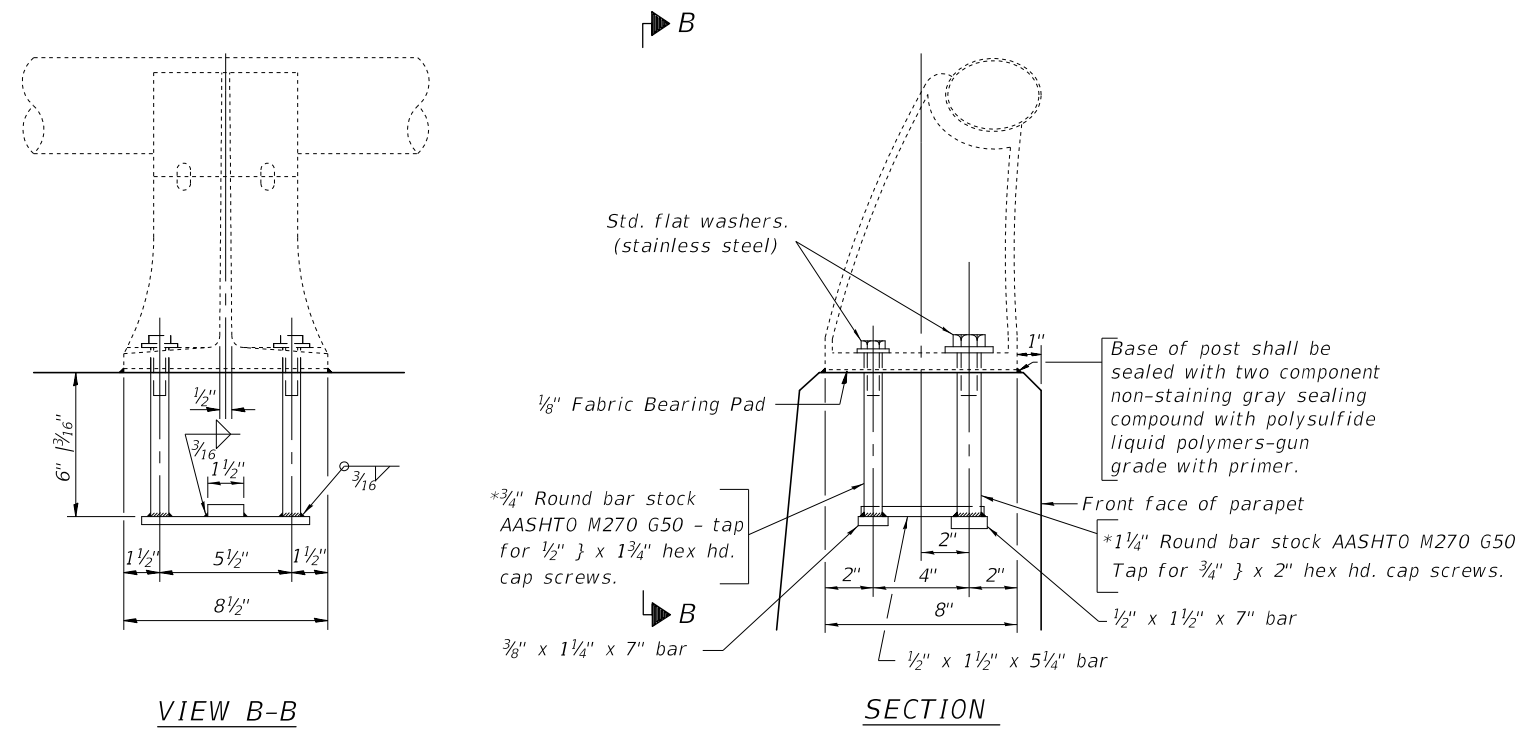
**STATE OF ILLINOIS
DEPARTMENT OF TRANSPORTATION**

**BAR SPLICER ASSEMBLY AND MECHANICAL SPLICER DETAILS
STRUCTURE NO. 014-0052**

SCALE: SHEET 8 OF 9 SHEETS STA. TO STA.

F.A.P. RTE. 327	SECTION 14-13RS	COUNTY CLINTON	TOTAL SHEETS 36	SHEET NO. 35
CONTRACT NO. 76K64			ILLINOIS FED. AID PROJECT	

MODEL: 014-0052-76K64-008
FILE NAME: P:\gim\mcomada\illinois.gov\PHWDOT\Documents\DOT Offices\District 8\Projects\014-0052-76K64.dgn



RAIL POST DETAILS

* In lieu of the cast-in-place anchor device shown, the Contractor has the option of drilling and setting stainless steel anchor rods of the same diameter and grade as the specified cap screws according to Article 509.06 of the Standard Specifications. Embedment shall be according to the manufacturer's specifications. Cost of providing anchorages is included with Concrete Superstructure.

MODEL: 0140052-76K64.dgn
 FILE NAME: P:\p\illinois\0140052-76K64\CADD\Structures\0140052-76K64.dgn

USER NAME = vinsonay	DESIGNED - AYV	REVISED -
	DRAWN - AYV	REVISED -
PLOT SCALE = 0:2.0000 " = 1" / in.	CHECKED - MWD	REVISED -
PLOT DATE = 3/16/2020	DATE -	REVISED -

**STATE OF ILLINOIS
 DEPARTMENT OF TRANSPORTATION**

**RAIL ANCHORAGE DETAILS
 STRUCTURE NO. 014-0052**

SCALE: SHEET 9 OF 9 SHEETS STA. TO STA.

F.A.P. RTE.	SECTION	COUNTY	TOTAL SHEETS	SHEET NO.
327	14-13RS	CLINTON	36	36
CONTRACT NO. 76K64			ILLINOIS FED. AID PROJECT	