

STATE OF ILLINOIS
DEPARTMENT OF TRANSPORTATION

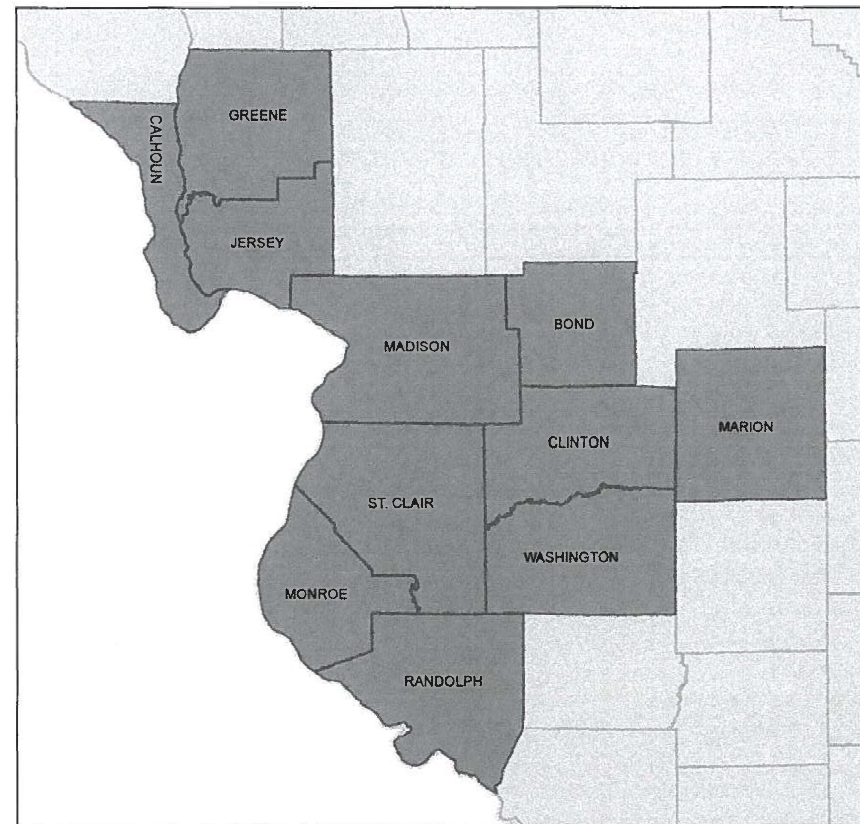
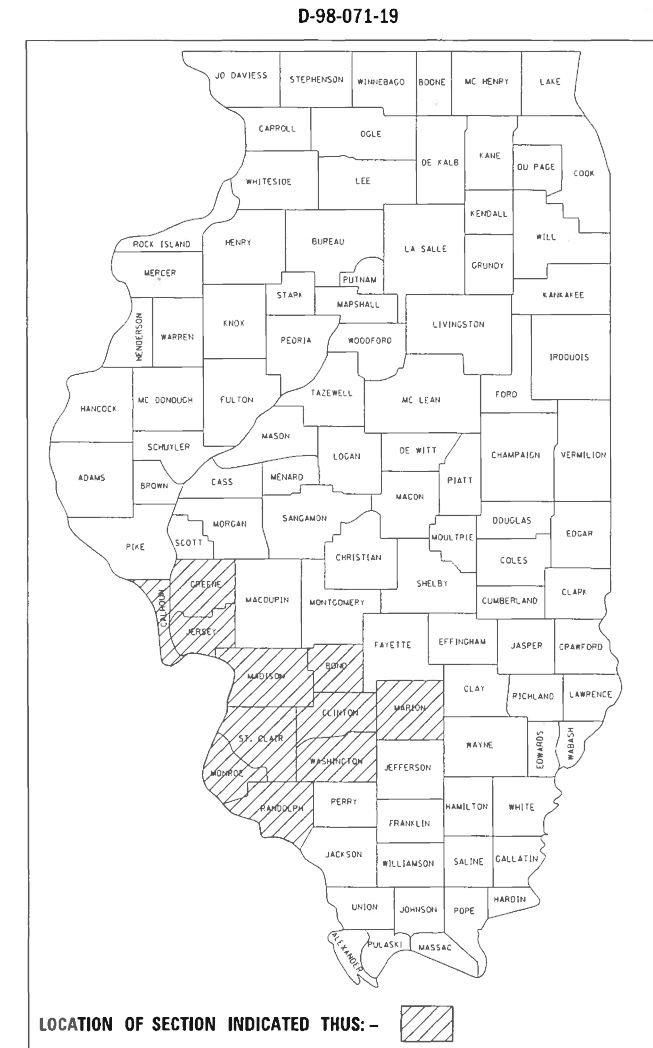
| F.A. RTE. | SECTION | COUNTY | TOTAL SHEETS | SHEET NO. |
|-----------|-------------------------|----------|--------------------|-----------|
| | DIST 8 GUARDRAIL 2021-1 | VARIOUS | 12 | 1 |
| | | ILLINOIS | CONTRACT NO. 76M57 | |

FOR INDEX OF SHEETS, SEE SHEET NO. 2

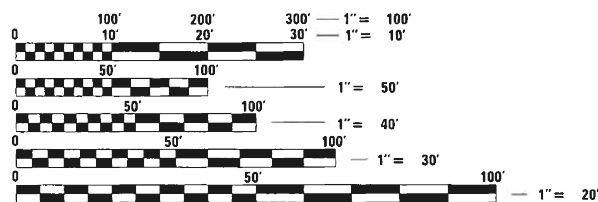
PROPOSED
HIGHWAY PLANS

VARIOUS ROUTES
SECTION DIST 8 GUARDRAIL 2021-1
GUARDRAIL & CABLE MEDIAN REPAIR
VARIOUS COUNTY

C-98-090-19



NOT TO SCALE



FULL SIZE PLANS HAVE BEEN PREPARED USING STANDARD ENGINEERING SCALES. REDUCED SIZED PLANS WILL NOT CONFORM TO STANDARD SCALES. IN MAKING MEASUREMENTS ON REDUCED PLANS, THE ABOVE SCALES MAY BE USED.

J.U.L.I.E.
JOINT UTILITY LOCATION INFORMATION FOR EXCAVATORS
1-800-892-0123
OR 811

PROJECT ENGINEER: HERVE GELIN (618) 346-3179
SQUAD LEADER: BILLIE OWEN (618) 346-3209

CONTRACT NO. 76M57

STATE OF ILLINOIS
DEPARTMENT OF TRANSPORTATION

SUBMITTED *Jan 24 20 20*
Kaith Roberts REGIONAL ENGINEER

May 8, 2020 *Joe A. Elk*
ENGINEER OF DESIGN AND ENVIRONMENT

May 8, 2020 *Jerry J. Quinn*
DIRECTOR OF HIGHWAYS PROJECT IMPLEMENTATION 13

PRINTED BY THE AUTHORITY
OF THE STATE OF ILLINOIS

INDEX OF SHEETS

- 1. COVER SHEET
- 2. INDEX OF SHEETS, HIGHWAY STANDARDS, GENERAL NOTES, AND COMMITMENTS
- 3.-5. SUMMARY OF QUANTITIES
- 6. HIGH TENSION CABLE LOCATION MAP
- 7.-12. GUARDRAIL DETAILS

HIGHWAY STANDARDS

| | |
|-----------|-----------|
| 000001-07 | 701201-05 |
| 630001-12 | 701301-04 |
| 630101-10 | 701400-09 |
| 630301-09 | 701406-12 |
| 631006-08 | 701421-08 |
| 631011-10 | 701426-09 |
| 631026-06 | 701428-01 |
| 631031-16 | 701456-05 |
| 635001-02 | 701501-06 |
| 636001-02 | 701502-09 |
| 701001-02 | 701601-09 |
| 701006-05 | 701602-10 |
| 701011-04 | 701606-10 |
| 701101-05 | 701701-10 |
| 701106-02 | 701901-08 |

GENERAL NOTES

- 1. BEFORE ORDERING THE IMPACT ATTENUATORS, THE CONTRACTOR MUST CONTACT THE OPERATIONS FIELD ENGINEER AT (618) 346-3279 OR (618) 346-3233 TO RECEIVE APPROVAL OF THE PROPOSED INSTALLATION.
- 2. ALL WORK IS TO BE REPLACED IN KIND OR AS INDICATED ON THE CONTRACT PLANS AND PROVISIONS.
- 3. NO MATERIAL SHALL BE LEFT ON OR NEAR THE ROADWAY DURING NON-WORKING HOURS.
- 4. ANY NECESSARY TRAFFIC CONTROL WILL BE PROVIDED BY THE CONTRACTOR; APPROPRIATE STANDARDS ARE LISTED IN THE PLANS AND CONTRACT DOCUMENTS.
- 5. ALL REFLECTORS SHALL BE PLACED AT THE DISCRETION OF THE ENGINEER. COST OF REFLECTORS TO BE INCLUDED IN THE GUARDRAIL PAY ITEMS.
- 6. ILLINOIS STATE LAW REQUIRES A 48-HOUR NOTICE TO BE GIVEN TO UTILITIES BEFORE DIGGING. FIELD MARKING OF FACILITIES MAY BE OBTAINED BY CONTACTING J.U.L.I.E. (PHONE 800-892-0123) OR FOR NON-MEMBERS, THE UTILITY COMPANY DIRECTLY.
- 7. WHEN NO WORK IS BEING PERFORMED, THE FLAGGERS WILL NOT BE REQUIRED. IF THE FLAGGERS ARE NOT PRESENT, THE FLAGGER SIGNS SHALL BE REMOVED OR COVERED.
- 8. PRIOR TO ORDERING ANY MATERIALS, THE CONTRACTOR SHALL CONFIRM THE TYPES AND SPECIFIC MANUFACTURER FOR THE GUARDRAIL AND CABLE REPAIRS REQUIRED.
- 9. 45 AND 55 MPH SIGNS ARE INCLUDED IN ALL INTERSTATE LANE CLOSURES. IF THE LANE CLOSURE DURATION IS LESS THAN 4 HOURS, THE 45 AND 55 MPH SIGNS ARE NOT REQUIRED.
- 10. NO OVERNIGHT LANE CLOSURES WILL BE ALLOWED.
- 11. ARTICLE 701.20 OF THE STANDARD SPECIFICATIONS DISCUSSES AN ADJUSTED UNIT PRICE. NO ADJUSTMENTS SHALL BE MADE TO THE TRAFFIC CONTROL PAY ITEMS FOR THIS CONTRACT.
- 12. THE CONTRACTOR SHALL BE ADVISED THAT THE GUARDRAIL PAY ITEMS INCLUDED IN THE PLANS MAY BE USED TO REPLACE/REPAIR SPBGR AND TRAFFIC BARRIER TERMINALS FOR EITHER THE CURRENT MIDWEST STYLES AS SHOWN IN THE HIGHWAY STANDARDS OR SPBGR AND TRAFFIC BARRIER TERMINALS INSTALLED PRIOR TO JANUARY 1, 2007 AS SHOWN IN THE PLAN DETAILS. NO ADDITIONAL COMPENSATION WILL BE ALLOWED FOR UTILIZING THE CURRENT MIDWEST STANDARDS.
- 13. THE DEPARTMENT STRONGLY ENCOURAGES THE PRIME CONTRACTOR AND THEIR SUB-CONTRACTORS TO HIRE MINORITY, WOMEN AND DISADVANTAGED INDIVIDUALS FROM ITS FEDERALLY FUNDED HIGHWAY CONSTRUCTION CAREERS TRAINING PROGRAM (HCCTP) TO HELP MEET WORKFORCE AND TRAINEE GOALS. THIS PROGRAM IS TRAINING MINORITIES, WOMEN AND DISADVANTAGED INDIVIDUALS IN HIGHWAY CONSTRUCTION-RELATED SKILLS, E.G., MATH FOR THE TRADES, JOB READINESS, TECHNICAL SKILLS COURSEWORK (CARPENTRY, CONCRETE FLATWORK, BLUEPRINT READING, SITE PLANS, SITE WORK, TOOLS USE, ETC.) AND OSHA 10 HOUR CERTIFICATION, TO PREPARE THEM FOR A CAREER IN THE HIGHWAY CONSTRUCTION TRADES. GRADUATES ARE WELL-TRAINED AND READY TO BECOME PRODUCTIVE ENTRY-LEVEL CONSTRUCTION WORKERS. CONTACT THE DISTRICT EEO OFFICE AT 618-346-3360 AND OR THE HCCTP COORDINATOR AT 618-874-6528 TO LEARN MORE ABOUT THE PROGRAM AND FOR ASSISTANCE IN MEETING WORKFORCE AND TRAINEE GOALS.

COMMITMENTS
NONE

| | | | | | | | | | | |
|---|------------------------------|------------|-----------|---|---|--------------------|-------------------------|--------------|---------------------------|-----------|
| FILE NAME = | USER NAME = lewisko | DESIGNED - | REVISED - | STATE OF ILLINOIS DEPARTMENT OF TRANSPORTATION | INDEX OF SHEETS, HIGHWAY STANDARDS GENERAL NOTES AND COMMITMENTS | F.A. RTE. | SECTION | COUNTY | TOTAL SHEETS | SHEET NO. |
| pw:\planroom.dot.illinois.gov\PIDOT\Documents\IDOT Offices\District 8\Projects\0876M57\DRAND\to\CADsheets\0876M57-sht-gennots.dwg | | CHECKED - | REVISED - | | | VARIOUS | DIST 8 GUARDRAIL 2021-1 | VARIOUS | 12 | 2 |
| Default | PLOT SCALE = 100.0000' / in. | DATE - | REVISED - | | | CONTRACT NO. 76M57 | | | | |
| | PLOT DATE = 1/24/2020 | DATE - | REVISED - | | | SCALE: NONE | SHEET 1 OF 1 SHEETS | STA. TO STA. | ILLINOIS FED. AID PROJECT | |

| CODE NO. | ITEM | UNIT | TOTAL QUANTITY | CONSTRUCTION CODE | | |
|----------|--|-------|----------------|-------------------|------------|------------|
| | | | | 100% STATE | 100% STATE | 100% STATE |
| | | | | CONT. MAINT | MCHD | HTC |
| | | | | 0021 | 0021 | 0021 |
| 63000350 | LONG-SPAN GUARDRAIL OVER CULVERT, 12 FT 6 IN SPAN | FOOT | 162.5 | 162.5 | | |
| 63100045 | TRAFFIC BARRIER TERMINAL, TYPE 2 | EACH | 6 | 4 | 2 | |
| 63100070 | TRAFFIC BARRIER TERMINAL, TYPE 5 | EACH | 5 | 4 | 1 | |
| 63100085 | TRAFFIC BARRIER TERMINAL, TYPE 6 | EACH | 9 | 8 | 1 | |
| 63100167 | TRAFFIC BARRIER TERMINAL, TYPE 1 (SPECIAL) TANGENT | EACH | 83 | 65 | 18 | |
| 63100169 | TRAFFIC BARRIER TERMINAL, TYPE 1 (SPECIAL) FLARED | EACH | 25 | 5 | 20 | |
| 64300260 | IMPACT ATTENUATORS (FULLY REDIRECTIVE, NARROW), TEST LEVEL 3 | EACH | 5 | 3 | 2 | |
| 64300370 | IMPACT ATTENUATORS (FULLY REDIRECTIVE, WIDE), TEST LEVEL 3 | EACH | 5 | 3 | 2 | |
| 67100100 | MOBILIZATION | L SUM | 1 | 0.33 | 0.34 | 0.33 |
| X0325972 | CABLE GUARD POST | EACH | 340 | | | 340 |
| X0326466 | HIGH TENSION CABLE POST REPAIR | EACH | 80 | | | 80 |
| X0326468 | MEDIAN CABLE | FOOT | 300 | | | 300 |
| X6300210 | GUARDRAIL BLOCKS | EACH | 785 | 400 | 385 | |
| X6300215 | RAIL ELEMENT PLATES | EACH | 510 | 200 | 310 | |

REV. - MS

| | | | | | | | | | | | | |
|---|-------------------------------|------------|-----------|---|------------------------------|-------|----|-----------|-------------------------|---------|--------------------|-----------|
| FILE NAME = | USER NAME = lewiska | DESIGNED - | REVISED - | STATE OF ILLINOIS DEPARTMENT OF TRANSPORTATION | SUMMARY OF QUANTITIES | | | F.A. RTE. | SECTION | COUNTY | TOTAL SHEETS | SHEET NO. |
| pw:\planroom.dot.illinois.gov\PIWIDOT\Documents\DOT Offices\District 8\Projects\DR876M57\DR876M57-CAD\Sheets\DR876M57-sht-S00.dgn | PLOT SCALE = 100.0000' / 1in. | CHECKED - | REVISED - | | | | | VARIOUS | DIST 8 GUARDRAIL 2021-1 | VARIOUS | 12 | 3 |
| Default | PLOT DATE = 1/24/2020 | DATE - | REVISED - | | SCALE: NONE | SHEET | OF | SHEETS | STA. | TO STA. | CONTRACT NO. 76M57 | |
| (ILLINOIS) FED. AID PROJECT | | | | | | | | | | | | |

| CODE NO. | ITEM | UNIT | TOTAL QUANTITY | CONSTRUCTION CODE | | |
|----------|---|------|----------------|---------------------|--------------|-------------|
| | | | | 100% STATE | 100% STATE | 100% STATE |
| | | | | CONT. MAINT 0021 | MCHD 0021 | HTC 0021 |
| X6300217 | RAIL ELEMENT PLATES (RADIUS) | EACH | 50 | 25 | 25 | |
| X6300220 | EXTRUDER HEAD | EACH | 15 | 10 | 5 | |
| X6300225 | SINGLE END SECTION | EACH | 3 | 2 | 1 | |
| X6300231 | STEEL POST, ATTACHED TO STRUCTURES | EACH | 7 | 3 | 4 | |
| X6300236 | STEEL POSTS 6' | EACH | 625 | 300 | 325 | |
| X6300239 | STEEL POSTS 9' | EACH | 250 | 100 | 150 | |
| X6331110 | STEEL POSTS, SPECIAL | EACH | 12 | 10 | 2 | |
| X6430210 | REMOVE AND REINSTALL IMPACT ATTENUATORS | EACH | 85 | 20 | 65 | |
| X7011834 | TRAFFIC CONTROL AND PROTECTION, CALL OUT WORK | EACH | 296 | 176 | 120 | |
| X7011836 | TRAFFIC CONTROL AND PROTECTION, FREEWAY/EXPRESSWAY, CALL OUT WORK | EACH | 375 | 175 | 100 | 100 |
| X8030110 | LOCATING UNDERGROUND CABLE, SPECIAL | EACH | 7 | 5 | 2 | |
| Z0029655 | HIGH TENSION CABLE ROAD GUARDPOST | EACH | 825 | | | 825 |
| Z0029657 | HIGH TENSION CABLE SYSTEM MAINTENANCE | EACH | 35 | | | 35 |
| Z0029658 | REPAIR TRAFFIC BARRIER TERMINAL TYPE 1 SPECIAL - POST | EACH | 79 | 14 | 65 | |

REV. - MS

| | | | | | | | | | | | | | |
|---|-------------------------------|------------|-----------|---|--|-------------------------|---------|----|--------------------|---------|--------|--------------|-----------|
| FILE NAME = | USER NAME = lewiska | DESIGNED - | REVISED - | STATE OF ILLINOIS DEPARTMENT OF TRANSPORTATION | SUMMARY OF QUANTITIES | | | | F.A. RTE. | SECTION | COUNTY | TOTAL SHEETS | SHEET NO. |
| pw:\planroom.dot.illinois.gov\PIDOT\Documents\IDOT Offices\District 8\Projects\0876M57\DRAN\to\CAD\sheets\0876M57-sht-S00.dgn | | CHECKED - | REVISED - | | VARIOUS | DIST 8 GUARDRAIL 2021-1 | VARIOUS | 12 | 4 | | | | |
| Default | PLOT SCALE = 100.0000' / 1in. | DATE - | REVISED - | | SCALE: NONE SHEET OF SHEETS STA. TO STA. | | | | CONTRACT NO. 76M57 | | | | |
| | PLOT DATE = 1/24/2020 | | | | ILLINOIS FED. AID PROJECT | | | | | | | | |

| CODE NO. | ITEM | UNIT | TOTAL QUANTITY | CONSTRUCTION CODE | | |
|----------|---|------|----------------|-------------------|------------|------------|
| | | | | 100% STATE | 100% STATE | 100% STATE |
| | | | | CONT. MAINT | MCHD | HTC |
| | | | | 0021 | 0021 | 0021 |
| Z0029662 | REPLACE HIGH TENSION CABLE GUARDPOST FOUNDATION | EACH | 75 | | | 75 |
| Z0052410 | REPAIR TRAFFIC BARRIER TERMINAL, TYPE 1 SPECIAL (TANGENT) | EACH | 84 | 44 | 40 | |
| Z0052415 | REPAIR TRAFFIC BARRIER TERMINAL, TYPE 1 SPECIAL (FLARED) | EACH | 12 | 10 | 2 | |
| Z0052600 | REPAIR TRAFFIC BARRIER TERMINAL, TYPE 2 | EACH | 9 | 5 | 4 | |
| Z0052800 | REPAIR TRAFFIC BARRIER TERMINAL, TYPE 3A | EACH | 7 | 5 | 2 | |
| Z0053000 | REPAIR TRAFFIC BARRIER TERMINAL, TYPE 5 | EACH | 4 | 2 | 2 | |
| Z0053200 | REPAIR TRAFFIC BARRIER TERMINAL, TYPE 6 | EACH | 7 | 5 | 2 | |
| Z0059660 | REPAIR TRAFFIC BARRIER TERMINAL TYPE 1 SPECIAL - RAIL ELEMENT PLATE | EACH | 27 | 7 | 20 | |
| | | | | | | |
| | | | | | | |
| | | | | | | |
| | | | | | | |
| | | | | | | |
| | | | | | | |
| | | | | | | |
| | | | | | | |
| | | | | | | |
| | | | | | | |
| | | | | | | |
| | | | | | | |

REV. - MS



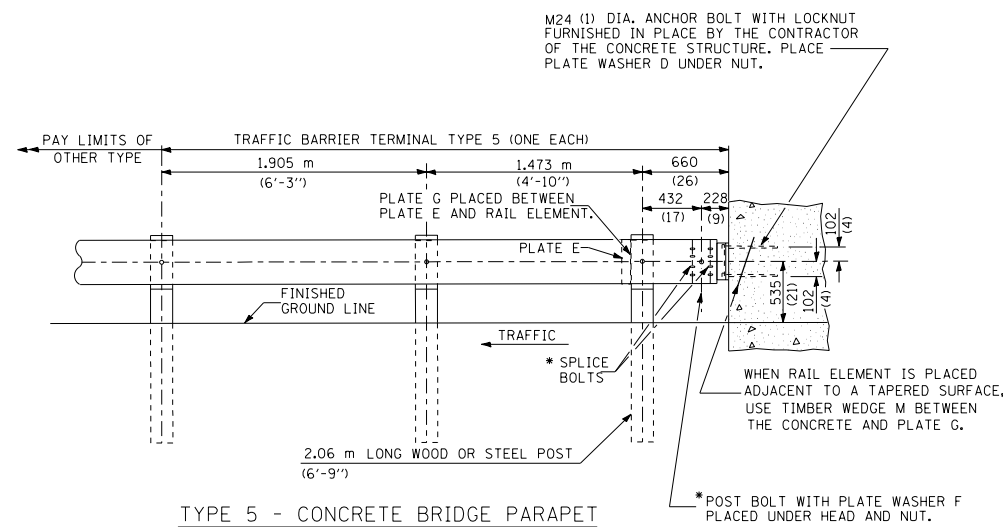
FOR INFORMATION ONLY.
CONTRACTOR SHALL CONFIRM
SYSTEM TYPE PRIOR TO
ORDERING MATERIALS.

| | | | |
|---|-----------------------|------------|-----------|
| FILE NAME = | USER NAME = lewisko | DESIGNED - | REVISED - |
| p:\planroom.dot\illinois.gov\PIWIDOT\Documents\IDOT Offices\District 8\Projects\D876M57\DRAND\to\CADsheets\D876M57-sht-plan.dgn | | CHECKED - | REVISED - |
| Default | PLOT DATE = 1/24/2020 | DATE - | REVISED - |

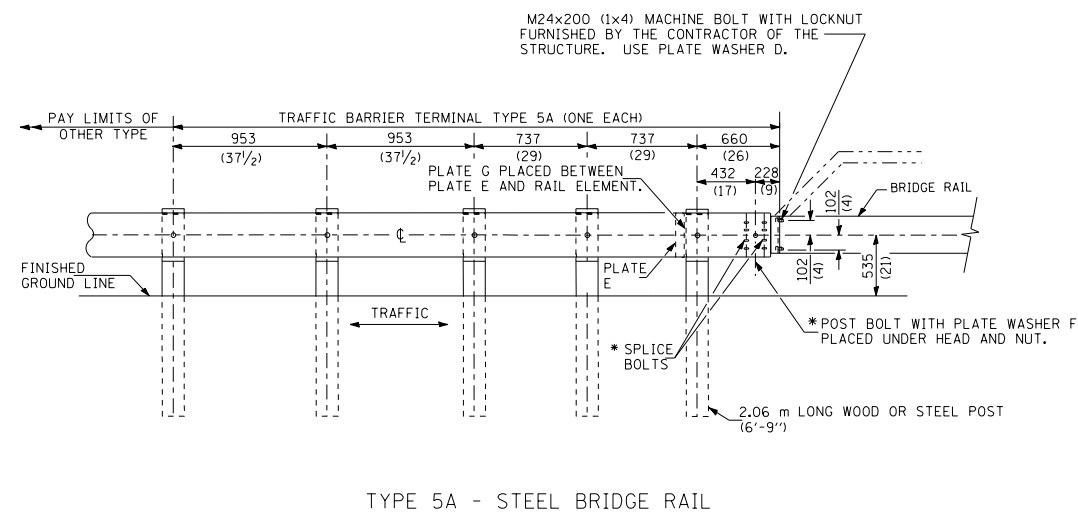
| | |
|-------------------------------------|--|
| STATE OF ILLINOIS | |
| DEPARTMENT OF TRANSPORTATION | |

| | | | |
|---------------------------|---------|-------------|--------------|
| HIGH TENSION CABLE | | | |
| LOCATION MAP | | | |
| SCALE: NONE | SHEET 1 | OF 1 SHEETS | STA. TO STA. |

| | | | | |
|---------------------------|-------------------------|---------|--------------------|-----------|
| F.A. RTE. | SECTION | COUNTY | TOTAL SHEETS | SHEET NO. |
| VARIOUS | DIST 8 GUARDRAIL 2021-1 | VARIOUS | 12 | 6 |
| | | | CONTRACT NO. 76M57 | |
| ILLINOIS FED. AID PROJECT | | | | |



TYPE 5 - CONCRETE BRIDGE PARAPET



TYPE 5A - STEEL BRIDGE RAIL

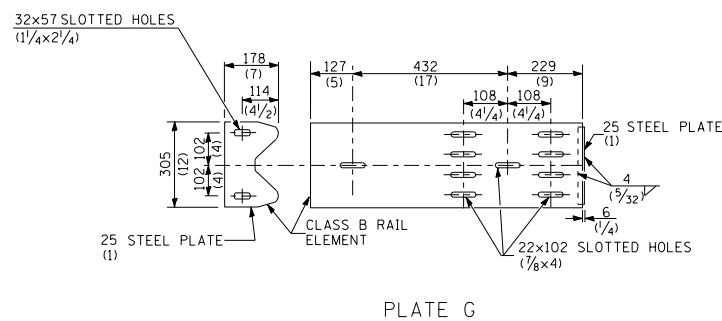


PLATE G

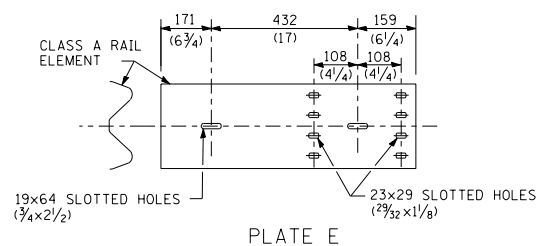
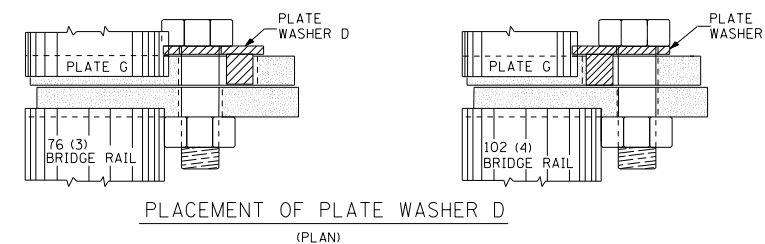


PLATE E



PLACEMENT OF PLATE WASHER D
(PLAN)

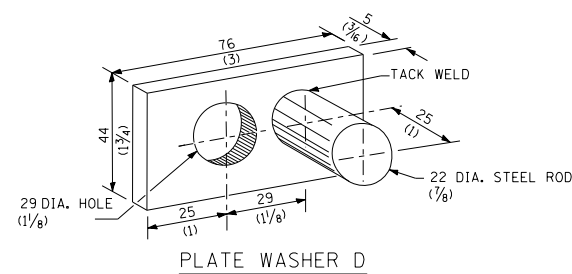
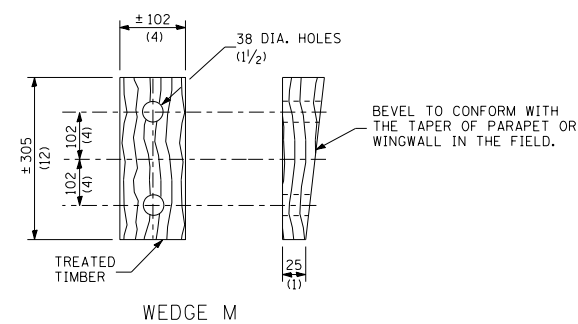


PLATE WASHER D



WEDGE M

GENERAL NOTES

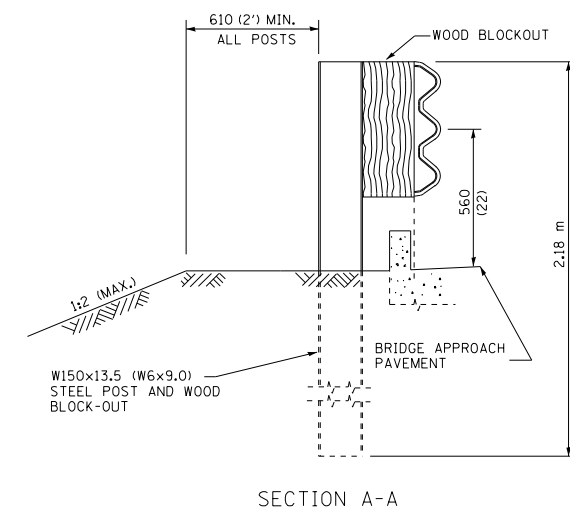
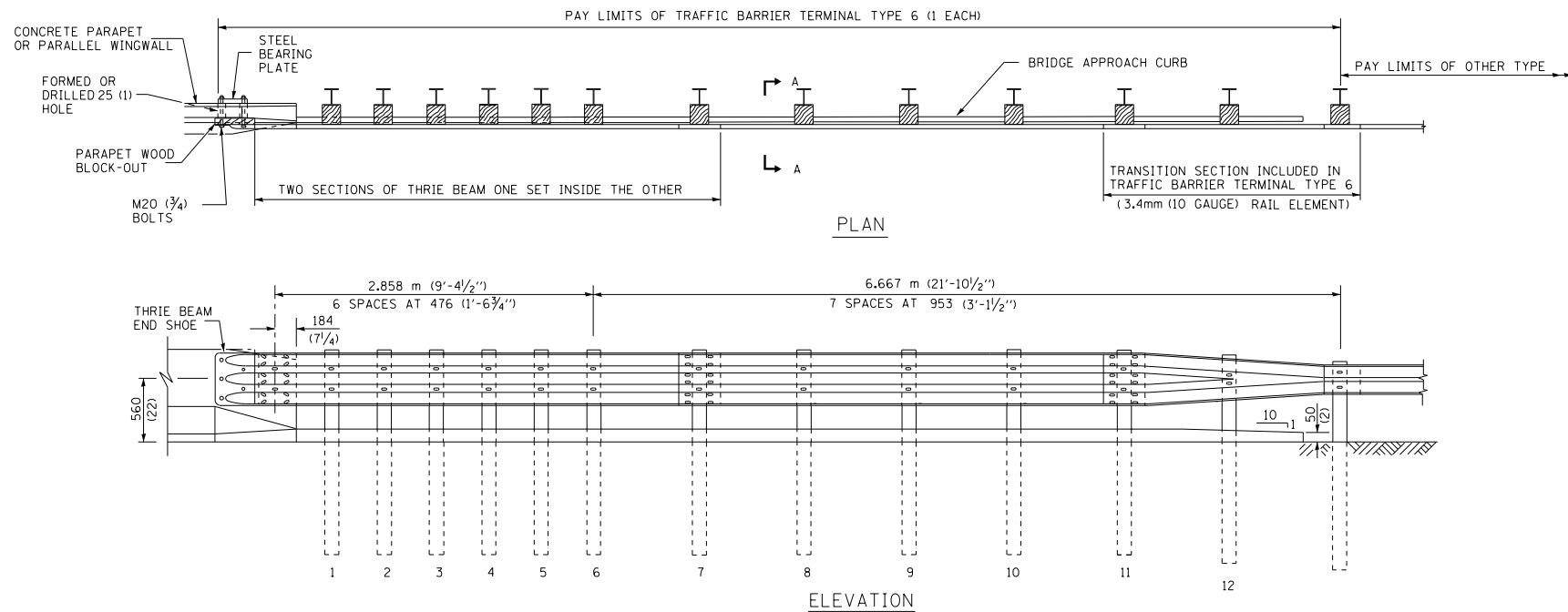
INSTALL PLATE WASHER D SO THAT THE 25 mm (1") PROJECTION FILLS THE REMAINDER OF THE SLOTTED HOLES IN THE 25 mm (1") END PLATE ON PLATE G AFTER THE M24 (1") DIA. BOLTS ARE IN PLACE.

* BOLTS SHALL BE PROVIDED WITH LOCKNUT OR DOUBLE NUT AND SHALL BE TIGHTENED ONLY TO A POINT THAT WILL ALLOW PLATE G TO BE FREE TO MOVE WHEN AN EXPANSION JOINT EXISTS BELOW THE CONNECTOR.

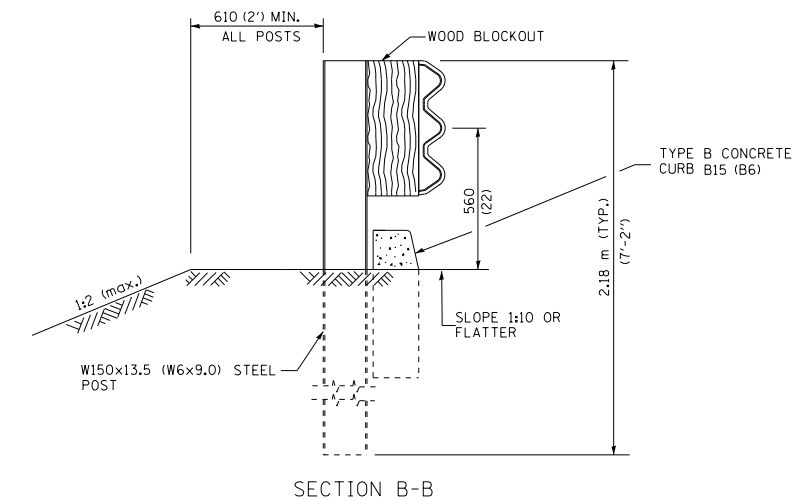
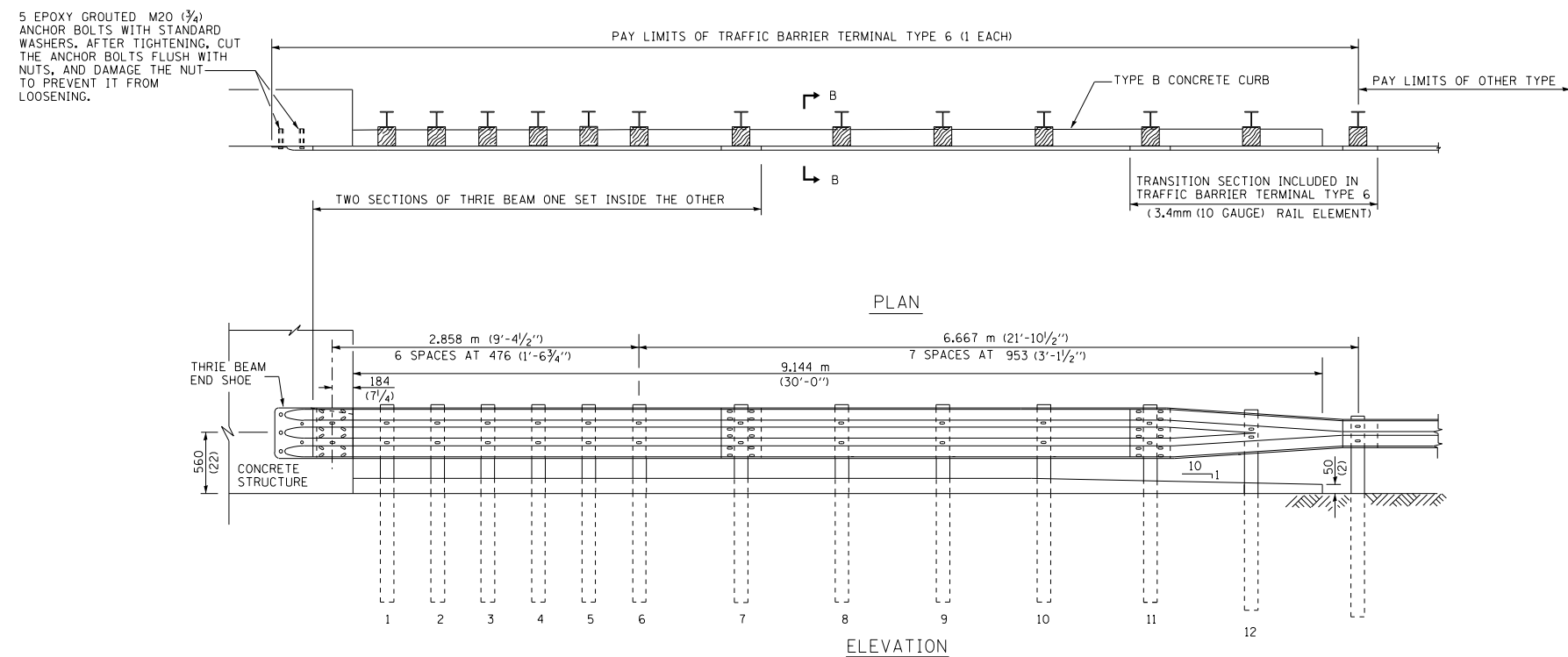
ALL DIMENSIONS ARE IN MILLIMETERS (INCHES) UNLESS OTHERWISE SHOWN.

THIS DETAIL IS APPLICABLE TO THE GUARDRAIL SYSTEM USED PRIOR TO JANUARY 1, 2007. FOR DETAILS ON THE MIDWEST GUARDRAIL SYSTEM, SEE STANDARD 630001.

| | | | | | | | | | | | | |
|--|-----------------------------|------------|-----------|---|---|-------------------------|--------------|--------------------|---------|--------|--------------|-----------|
| FILE NAME = | USER NAME = lewisko | DESIGNED - | REVISED - | STATE OF ILLINOIS DEPARTMENT OF TRANSPORTATION | TRAFFIC BARRIER TERMINAL TYPE 5 & 5A | | | F.A. RTE. | SECTION | COUNTY | TOTAL SHEETS | SHEET NO. |
| pw:\planroom.dot.illinois.gov\PIDOT\Documents\IDOT Offices\District 8\Projects\0876M57\DRAND\to\CADsheets\0876M57-sht-plan.dgn | | CHECKED - | REVISED - | | VARIOUS | DIST 8 GUARDRAIL 2021-1 | VARIOUS | 12 | 7 | | | |
| Default | PLOT SCALE = 100.0000' / 1" | DATE - | REVISED - | | SCALE: NONE | SHEET 1 OF 1 SHEETS | STA. TO STA. | CONTRACT NO. 76M57 | | | | |
| | PLOT DATE = 1/24/2020 | | | | ILLINOIS FED. AID PROJECT | | | | | | | |



OTHER CONCRETE STRUCTURE

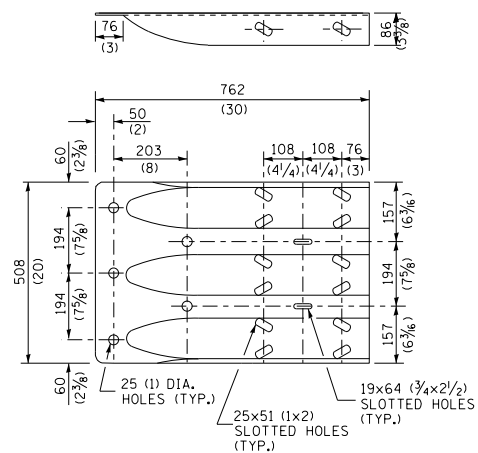


GENERAL NOTES

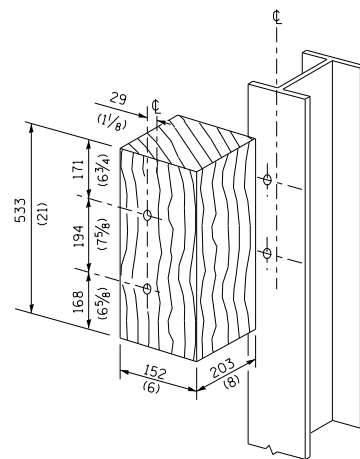
- THRIE BEAM RAIL SHALL BE BOLTED TO BLOCK-OUT AT ALL POSTS.
- ALL SLOPE RATIOS ARE EXPRESSED AS UNITS OF VERTICAL DISPLACEMENT TO UNITS OF HORIZONTAL DISPLACEMENT (V:H).
- ALL DIMENSIONS ARE IN MILLIMETERS (INCHES) UNLESS OTHERWISE SHOWN.

THIS DETAIL IS APPLICABLE TO THE GUARDRAIL SYSTEM USED PRIOR TO JANUARY 1, 2007. FOR DETAILS ON THE MIDWEST GUARDRAIL SYSTEM, SEE STANDARD 630001.

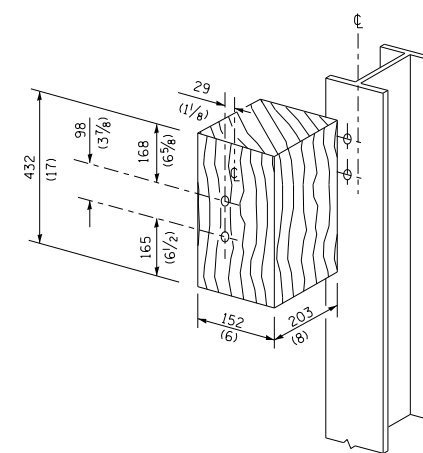
| | | | | | | | | | | | | |
|--|-------------------------------|------------|-----------|---|---|--|--|--------------------|-------------------------|--------------|---------------------------|-----------|
| FILE NAME = | USER NAME = lewisko | DESIGNED - | REVISED - | STATE OF ILLINOIS DEPARTMENT OF TRANSPORTATION | TRAFFIC BARRIER TERMINAL, TYPE 6 | | | F.A. RTE. | SECTION | COUNTY | TOTAL SHEETS | SHEET NO. |
| pw:\planroom.dot.illinois.gov\PIDOT\Documents\IDOT Offices\District 8\Projects\D876M57\DRAND\to\CAD\sheet\0876M57-sht-plan.dgn | | CHECKED - | REVISED - | | | | | VARIOUS | DIST 8 GUARDRAIL 2021-1 | VARIOUS | 12 | 8 |
| Default | PLOT SCALE = 100.0000' / 1in. | DATE - | REVISED - | | | | | CONTRACT NO. 76M57 | | | ILLINOIS FED. AID PROJECT | |
| | PLOT DATE = 1/24/2020 | | | | | | | SCALE: NONE | SHEET 1 OF 2 SHEETS | STA. TO STA. | | |



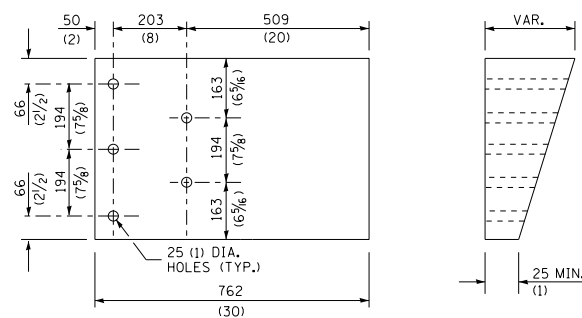
THRIE BEAM END SHOE DETAIL



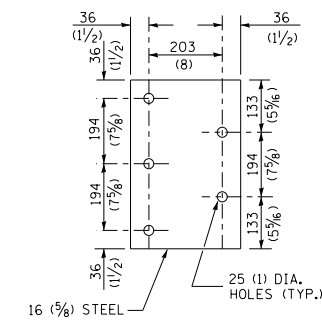
POSTS 1-11 WOOD BLOCKOUT DETAIL



POST 12 WOOD BLOCKOUT DETAIL



PARAPET WOOD BLOCK-OUT DETAIL

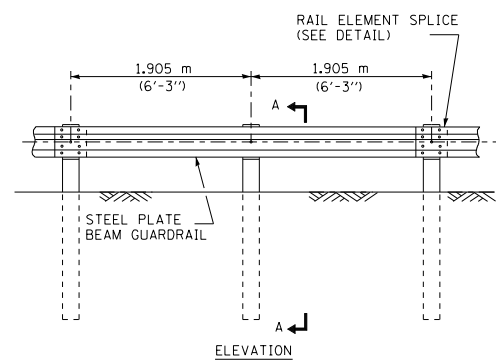


PARAPET STEEL BEARING PLATE DETAIL

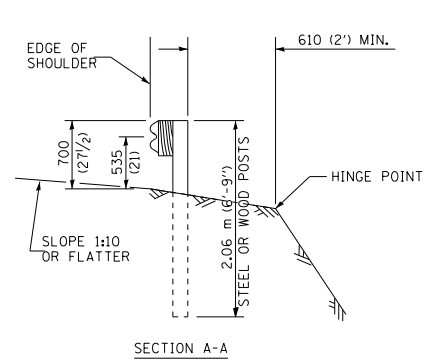
(5 EACH INDIVIDUAL 125x125x16 (5x5x5/8) STEEL PLATES WITH CENTERED 25 (1) HOLES MAY BE SUBSTITUTED FOR THE PLATE SHOWN.)

THIS DETAIL IS APPLICABLE TO THE GUARDRAIL SYSTEM USED PRIOR TO JANUARY 1, 2007. FOR DETAILS ON THE MIDWEST GUARDRAIL SYSTEM, SEE STANDARD 630001.

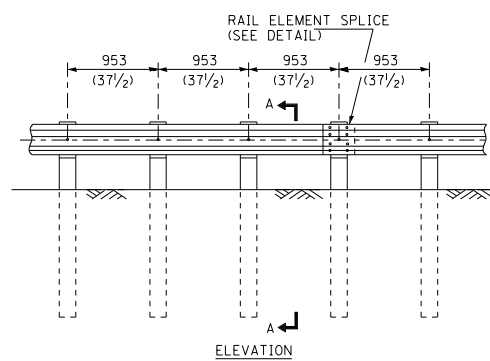
| | | | | | | | | | | | | |
|---|------------------------------|------------|-----------|---|---|--|--|--------------------|-------------------------|--------------|---------------------------|-----------|
| FILE NAME = | USER NAME = lewisko | DESIGNED - | REVISED - | STATE OF ILLINOIS DEPARTMENT OF TRANSPORTATION | TRAFFIC BARRIER TERMINAL, TYPE 6 | | | F.A. RTE. | SECTION | COUNTY | TOTAL SHEETS | SHEET NO. |
| pw:\planroom.dot.illinois.gov\PIDOT\Documents\IDOT Offices\District 8\Projects\D876M57\DRAND\to\CADsheets\D876M57-sht-pln.dgn | | DRAND | REVISED - | | | | | VARIOUS | DIST 8 GUARDRAIL 2021-1 | VARIOUS | 12 | 9 |
| Default | PLOT SCALE = 100.0000' / in. | CHECKED - | REVISED - | | | | | CONTRACT NO. 76M57 | | | | |
| | PLOT DATE = 1/24/2020 | DATE - | REVISED - | | | | | SCALE: NONE | SHEET 2 OF 2 SHEETS | STA. TO STA. | ILLINOIS FED. AID PROJECT | |



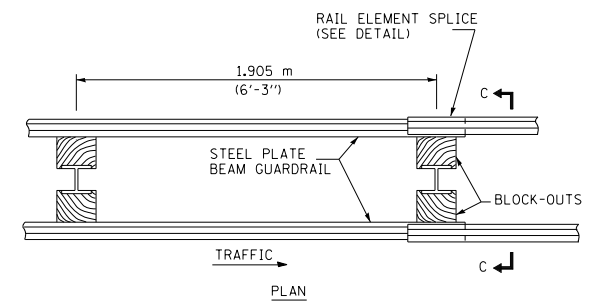
TYPE A
1.905 m (6'-3") TYPICAL POST SPACING



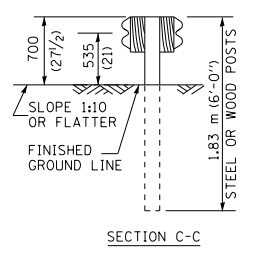
SECTION A-A



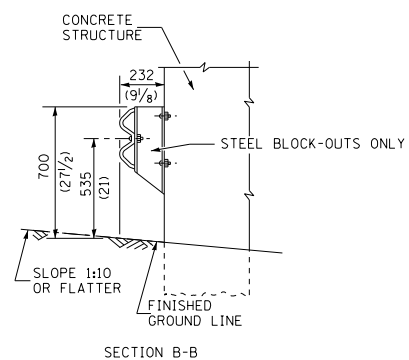
TYPE B
953 (37 1/2) CLOSED POST SPACING



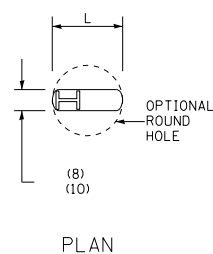
TYPE D
DOUBLE STEEL PLATE BEAM GUARDRAIL
1.905 m (6'-3") TYPICAL POST SPACING



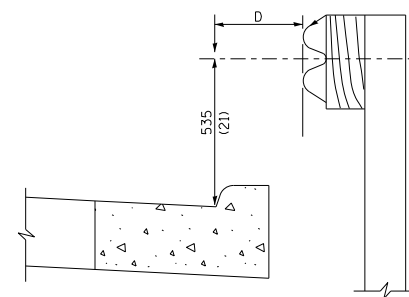
SECTION C-C



SECTION B-B

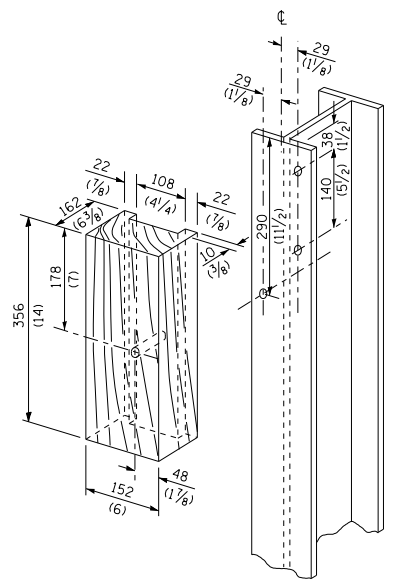


PLAN

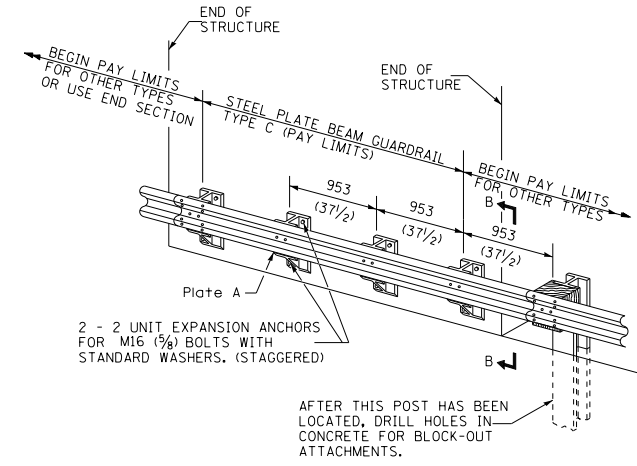


Note:
IF IT IS NECESSARY FOR D TO BE MORE THAN 300 (12) AND LESS THAN 3.0 m (10'-0") TYPE M-5 (M-2) CURB AND GUTTER (STD. 606001) SHALL BE USED IN FRONT OF AND IN ADVANCE OF THE GUARDRAIL.

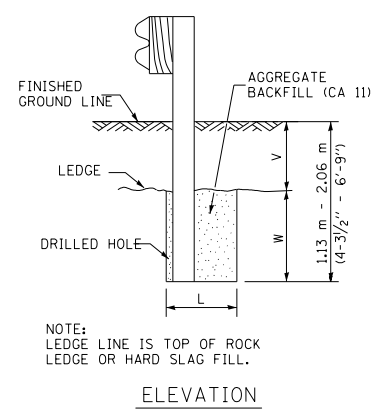
GUARDRAIL PLACED BEHIND CURB
(D = 0 DESIRABLE TO 300 (12) MAXIMUM)



WOOD BLOCK-OUT AND STEEL POST DETAILS



TYPE C
953 (37 1/2) BLOCK-OUT SPACING



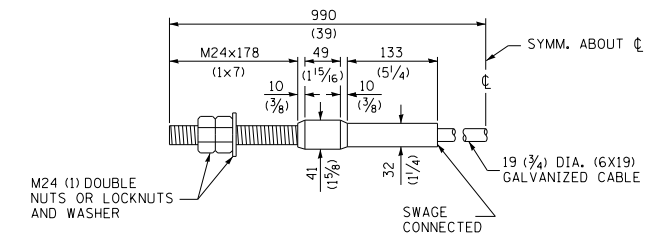
ELEVATION

FOOTING FOR POST WHEN IMPERVIOUS MATERIAL IS ENCOUNTERED

GENERAL NOTES

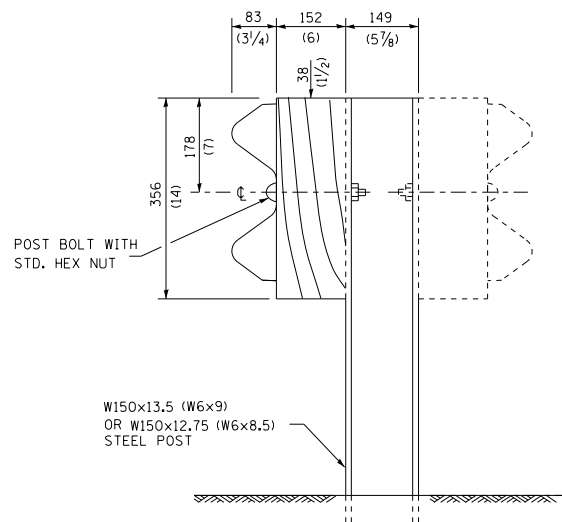
ALL SLOPE RATIOS ARE EXPRESSED AS UNITS OF VERTICAL DISPLACEMENT TO UNITS OF HORIZONTAL DISPLACEMENT (V:H).
ALL DIMENSIONS ARE IN MILLIMETERS (INCHES) UNLESS OTHERWISE SHOWN.
THE EXISTING STEEL POSTS MAY BE DRILLED TO MATCH THE BOLT PATTERN SHOWN HEREIN FOR THE WOOD BLOCK-OUT, OR A NEW STEEL POST SHALL BE PROVIDED.

| V | W | L | |
|---------------------------------|---------------------|-------------|-------------|
| | | Steel Post | Wood Post |
| 0 - 460 (0 - 18) | 610 (24) | 530 (21) | 580 (23) |
| >460 - 825 (>18 - 41.5) | 305 (12) | 203 (8) | 250 (10) |
| >825 - 1.13 m (>41.5 - 53.5) | 305 - 0 (12 - 0) | 203 (8) | 250 (10) |

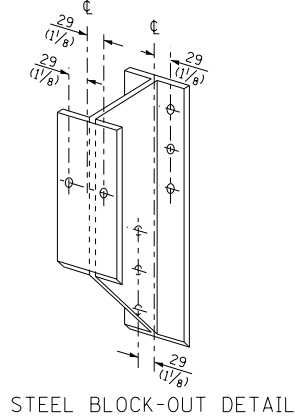


CABLE ASSEMBLY
(18,100 kg (40,000 LBS.) MIN. BREAKING STRENGTH)
TIGHTEN TO TAUT TENSION.

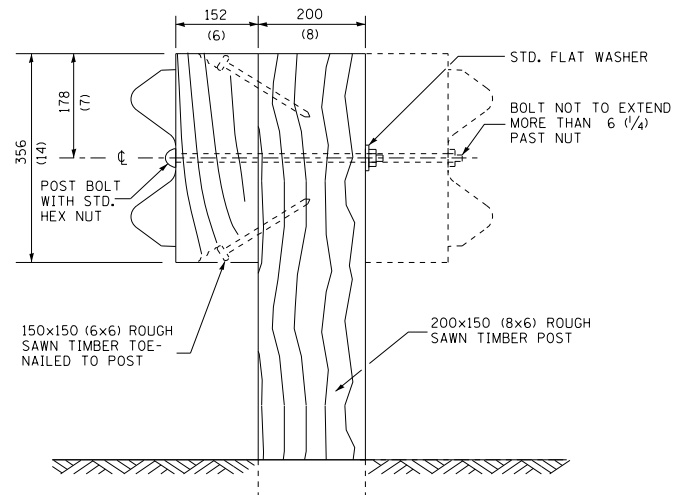
THIS DETAIL IS APPLICABLE TO THE GUARDRAIL SYSTEM USED PRIOR TO JANUARY 1, 2007. FOR DETAILS ON THE MIDWEST GUARDRAIL SYSTEM, SEE STANDARD 630001.



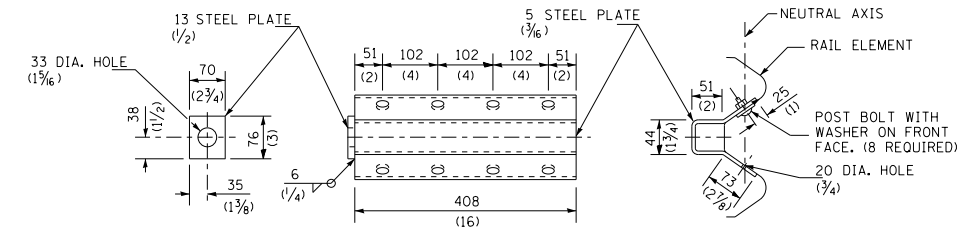
STEEL POST CONSTRUCTION



STEEL BLOCK-OUT DETAIL

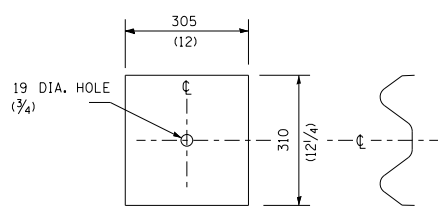


WOOD POST CONSTRUCTION



NOTE
ANCHOR PLATE T SHALL BE USED TO ATTACH CABLE ASSEMBLY TO GUARDRAIL WHEN REQUIRED ON TRAFFIC BARRIER TERMINALS.

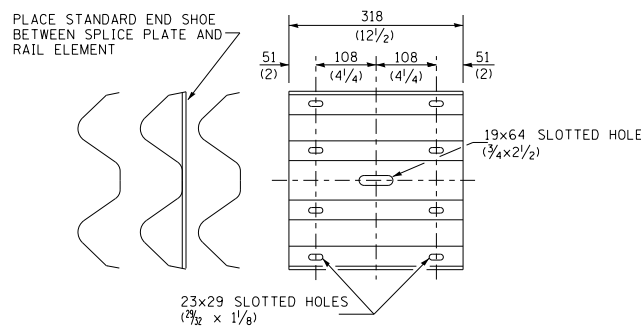
ANCHOR PLATE T DETAILS



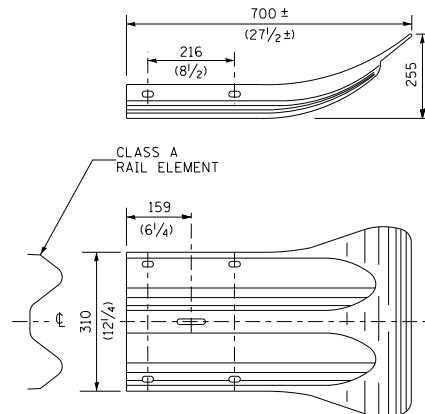
NOTE

PLATE A SHALL BE PLACED BETWEEN RAIL ELEMENT AND BLOCK-OUT AT NON-SPLICE MOUNTING POINTS ONLY WHEN STEEL BLOCK-OUTS ARE USED.

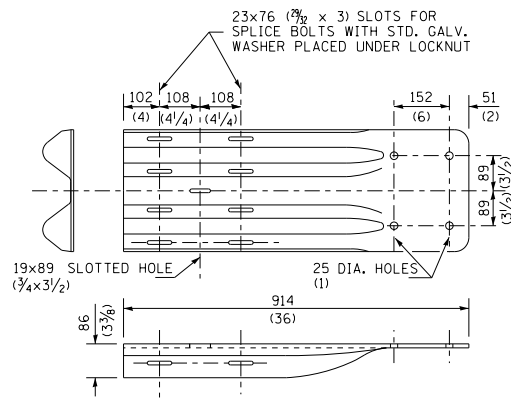
PLATE A



SPLICE PLATE



END SECTION



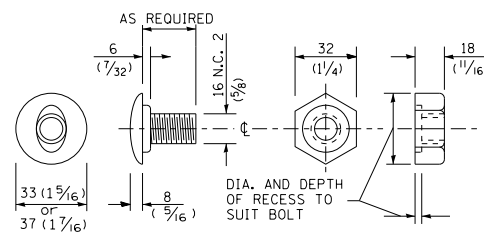
NOTE

WHEN END SHOE IS ATTACHED TO A BRIDGE PARAPET WHICH HAS AN EXPANSION JOINT, THE BOLTS SHALL BE PROVIDED WITH A LOCKNUT OR DOUBLE NUT AND SHALL BE TIGHTENED ONLY TO A POINT THAT WILL ALLOW GUARDRAIL MOVEMENT.

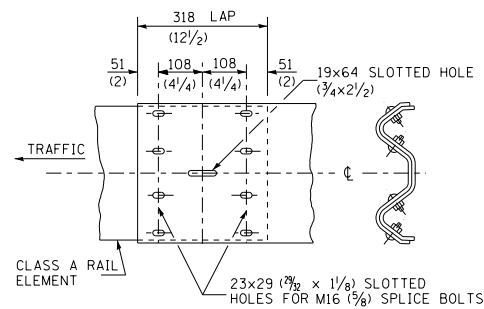
THE STANDARD END SHOE SHALL BE ATTACHED TO THE CONCRETE WITH PRE-DRILLED OR SELF-DRILLING ANCHOR BOLTS. THE ANCHOR CONE SHALL BE SET FLUSH WITH THE SURFACE OF THE CONCRETE.

EXTERNALLY THREADED STUDS PROTRUDING FROM THE SURFACE OF THE CONCRETE WILL NOT BE PERMITTED.

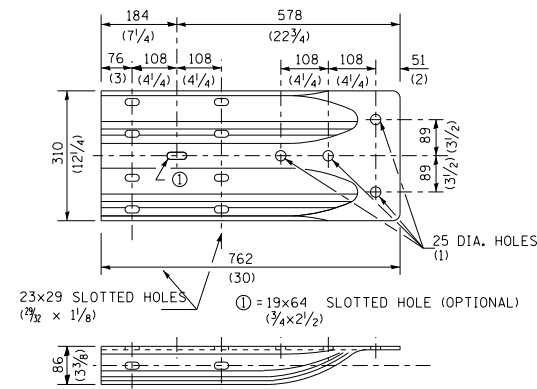
END SHOE



POST OR SPLICE BOLT & NUT



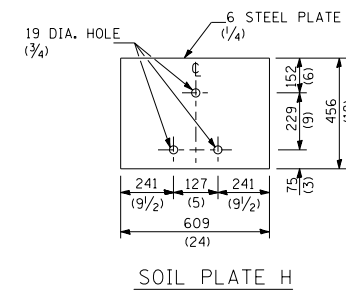
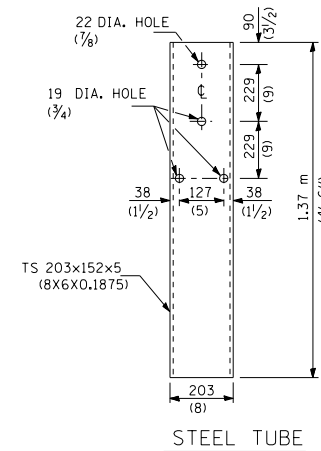
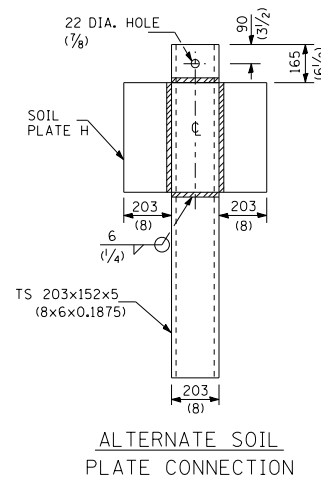
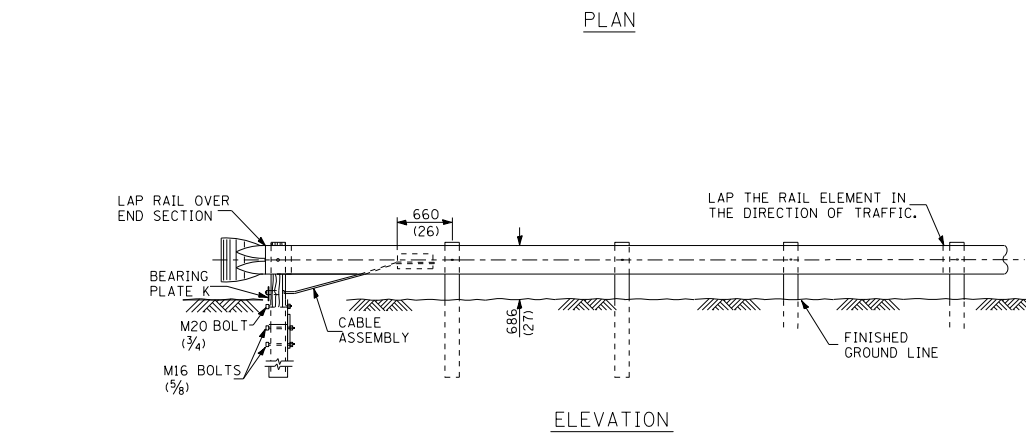
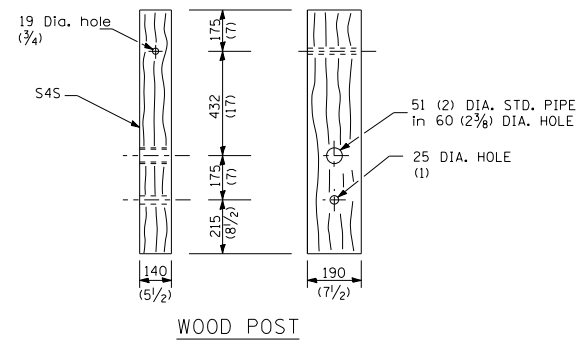
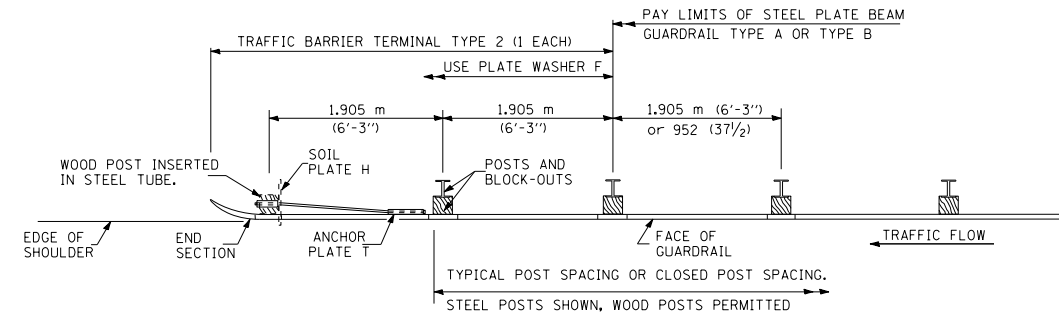
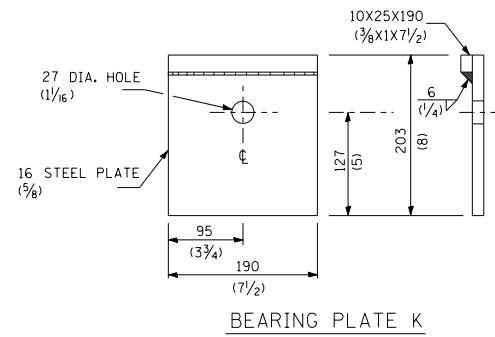
RAIL ELEMENT SPLICE



ALTERNATE END SHOE

THIS DETAIL IS APPLICABLE TO THE GUARDRAIL SYSTEM USED PRIOR TO JANUARY 1, 2007. FOR DETAILS ON THE MIDWEST GUARDRAIL SYSTEM, SEE STANDARD 630001.

| | | | | | | | | | | | | |
|--|------------------------------|------------|-----------|---|---|-------------------------|---------|--------------------|---------|--------|--------------|-----------|
| FILE NAME = | USER NAME = lewisko | DESIGNED - | REVISED - | STATE OF ILLINOIS DEPARTMENT OF TRANSPORTATION | STEEL PLATE BEAM GUARDRAIL | | | F.A. RTE. | SECTION | COUNTY | TOTAL SHEETS | SHEET NO. |
| pw:\planroom.dot.illinois.gov\PIWIDOT\Documents\IDOT Offices\District 8\Projects\D876M57\DRAND\to\CADsheets\D876M57-sht-plan.dgn | | CHECKED - | REVISED - | | VARIOUS | DIST 8 GUARDRAIL 2021-1 | VARIOUS | 12 | 11 | | | |
| Default | PLOT SCALE = 100.0000' / in. | DATE - | REVISED - | | SCALE: NONE SHEET 2 OF 2 SHEETS STA. TO STA. | | | CONTRACT NO. 76M57 | | | | |
| | PLOT DATE = 1/24/2020 | | | | ILLINOIS FED. AID PROJECT | | | | | | | |



GENERAL NOTES

USE PLATE WASHER F AT ALL POSTS.

THE BEARING PLATE K SHALL BE HELD IN POSITION BY (2) TWO EIGHT PENNY NAILS DRIVEN INTO THE POST AND BENT OVER THE TOP OF THE PLATE.

ALL DIMENSIONS ARE IN MILLIMETERS (INCHES) UNLESS OTHERWISE SHOWN.

THIS DETAIL IS APPLICABLE TO THE GUARDRAIL SYSTEM USED PRIOR TO JANUARY 1, 2007. FOR DETAILS ON THE MIDWEST GUARDRAIL SYSTEM, SEE STANDARD 630001.

| | | | | | | | | | | | | |
|--|-------------------------------|------------|-------------|---|--|--|---------------------|---------------------------|-------------------------|--------------|--------------|-----------|
| FILE NAME = | USER NAME = lewisko | DESIGNED - | REVISED - | STATE OF ILLINOIS DEPARTMENT OF TRANSPORTATION | TRAFFIC BARRIER TERMINAL TYPE 2 | | | F.A. RTE. | SECTION | COUNTY | TOTAL SHEETS | SHEET NO. |
| pw:\planroom.dot.illinois.gov\PIWIDOT\Documents\IDOT Offices\District 8\Projects\D876M57\DRAND\to\CADsheets\D876M57-sht-plan.dgn | | REVISOR = | REVISIONS = | | | | | VARIOUS | DIST 8 GUARDRAIL 2021-1 | VARIOUS | 12 | 12 |
| Default | PLOT SCALE = 100.0000' / 1in. | CHECKED - | REVISOR = | | | | | CONTRACT NO. 76M57 | | | | |
| | PLOT DATE = 1/24/2020 | DATE - | REVISOR = | | | | | ILLINOIS FED. AID PROJECT | | | | |
| | | | | SCALE: NONE | | | SHEET 1 OF 1 SHEETS | | | STA. TO STA. | | |