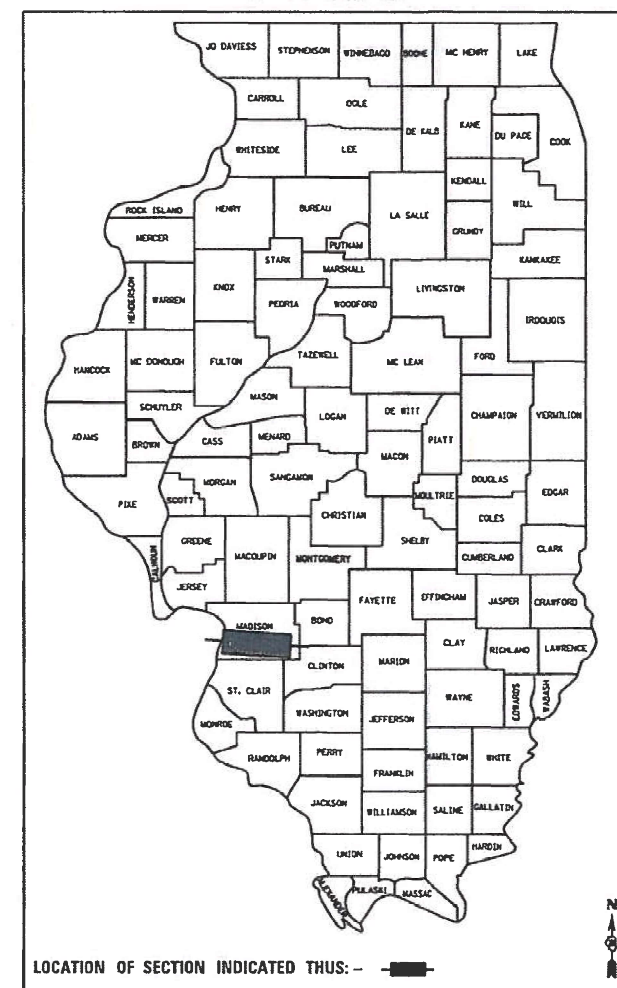


F.A.I. RTE.	SECTION	COUNTY	TOTAL SHEETS	SHEET NO.
255	60-(7,8)PS-2	MADISON	4	1
		ILLINOIS	CONTRACT NO. 76N79	

D-98-105-20



STATE OF ILLINOIS
DEPARTMENT OF TRANSPORTATION

PROPOSED HIGHWAY PLANS

FAI 255 (I-255)
SECTION 60-(7,8)PS-2
PUMP REPLACEMENT
MADISON COUNTY

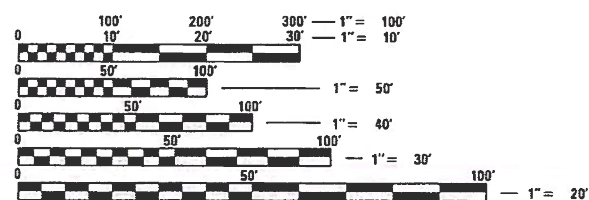
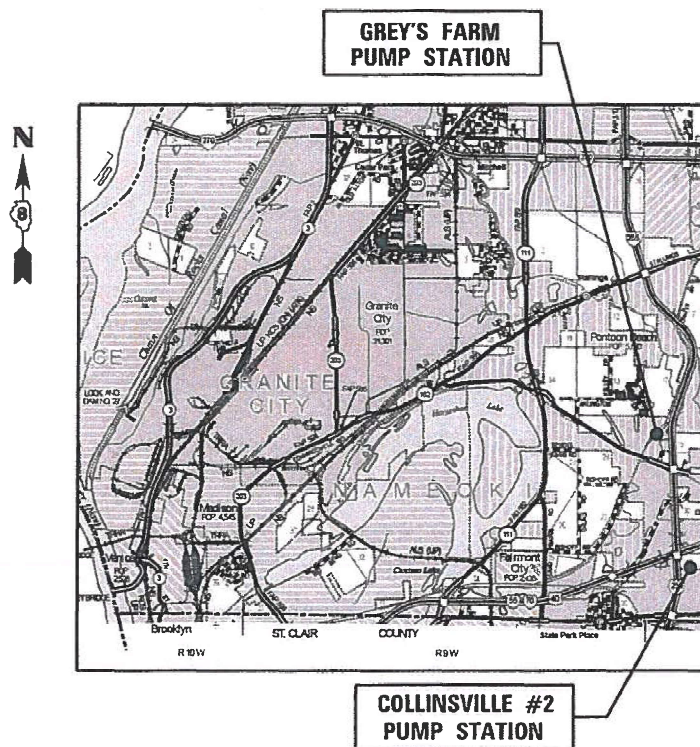
C-98-116-20

INDEX OF SHEETS

- 1 COVER SHEET
- 2 SUMMARY OF QUANTITIES
- 3 GREY'S FARM PUMP STATION ELEVATION
- 4 COLLINSVILLE #2 PUMP STATION ELEVATION

HIGHWAY STANDARDS

000001-07 STANDARD SYMBOLS, ABBREVIATIONS AND PATTERNS



FULL SIZE PLANS HAVE BEEN PREPARED USING STANDARD ENGINEERING SCALES. REDUCED SIZED PLANS WILL NOT CONFORM TO STANDARD SCALES. IN MAKING MEASUREMENTS ON REDUCED PLANS, THE ABOVE SCALES MAY BE USED.

J.U.L.I.E.
JOINT UTILITY LOCATION INFORMATION FOR EXCAVATION
1-800-892-0123
OR 811

PROJECT ENGINEER: PHILLIP SAWYER 618-346-3275
SQUAD LEADER: HERVE GELIN 618-346-3175

CONTRACT NO. 76N79

GROSS LENGTH = NA
NET LENGTH = NA

JOHN J. NEYENS
REGISTERED PROFESSIONAL ENGINEER OF ILLINOIS
062.063295
DATE 3/19/20

PLANS PREPARED BY:
KLINGNER & ASSOCIATES, P.C.
Engineers • Architects • Surveyors
616 North 24th Street, Quincy, IL Ph (217)223-3670 - Fax (217)223-3603
4510 Paris Grand Road, Hannibal, MO Ph (573)221-0020 - Fax (573)221-0012
610 N. 4th Street, Suite 100, Burlington, IA Ph (515)753-1026 - Fax (515)753-3605
49 North Prairie Street, Galesburg, IL Ph (309)342-4042 - Fax (309)341-3781
604 Liberty Street, Suite 125, Peoria, IA Ph (315)612-7402
907 East Ash Street, Columbia, MO Ph (673)355-5988
Internet Address: www.klingner.com
STATE OF ILLINOIS DESIGN FIRM # 1842738

STATE OF ILLINOIS
DEPARTMENT OF TRANSPORTATION
SUBMITTED March 20, 2020
K. Roberts, P.E.
REGIONAL ENGINEER
May 8, 2020
John J. Neyens, P.E.
ENGINEER OF DESIGN AND ENVIRONMENT
May 8, 2020
James J. ...
DIRECTOR OF HIGHWAYS PROJECT IMPLEMENTATION

**PRINTED BY THE AUTHORITY
OF THE STATE OF ILLINOIS**

D:\B\F\1180\19\Work D-dwr 05 - Phase II Pump Station Blanket Agreement\Plans and Specs\Collinsville #2\Final\0675879-ah-1-cover.dgn

ILLINOIS DEPARTMENT OF TRANSPORTATION

SUMMARY OF QUANTITIES

CODE NO.	ITEM	UNIT	TOTAL QUANTITY	CONSTRUCTION TYPE CODE		
				URBAN	MADISON	
				100% STATE		
				0044		
X0783300	PUMP STATION ELECTRICAL WORK	L SUM	1		1	

10:05:48 AM 3/19/2020
 Q:\187\187188\188 Work Order 06 - Phase II Pump Station Blanket Agreement\Plans and Specs\Greys and Collinsville -2\Fmol\0876N9-ant-S00.dgn

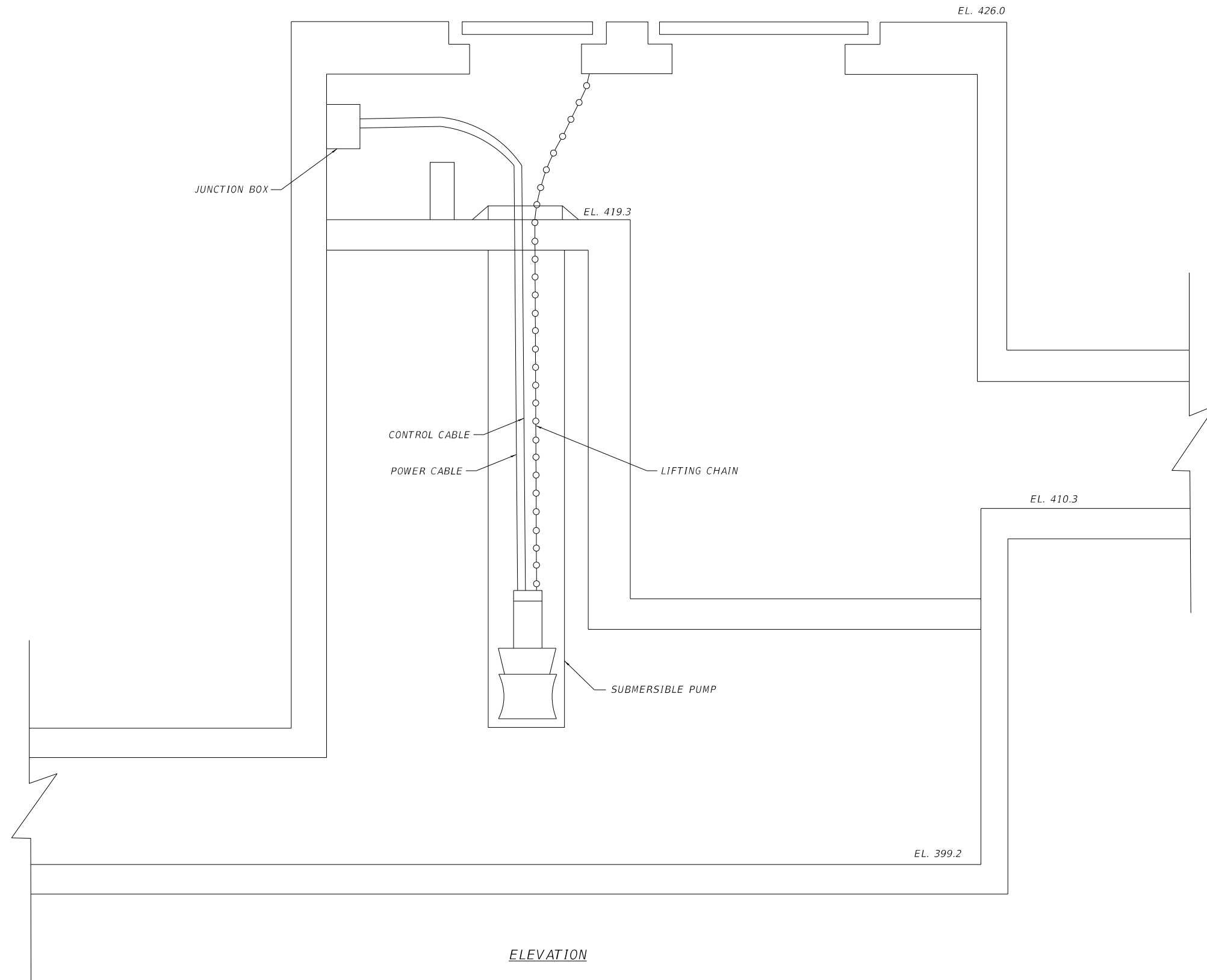


USER NAME = oms	DESIGNED - AMS	REVISED -
	CHECKED - EBB	REVISED -
PLOT SCALE = 24" = 1'	DRAWN - AMS	REVISED -
PLOT DATE = 3/19/2020	CHECKED - EBB	REVISED -

STATE OF ILLINOIS
DEPARTMENT OF TRANSPORTATION

SUMMARY OF QUANTITIES		
SCALE: NONE	SHEET 1 OF 1 SHEET	STA. TO STA.

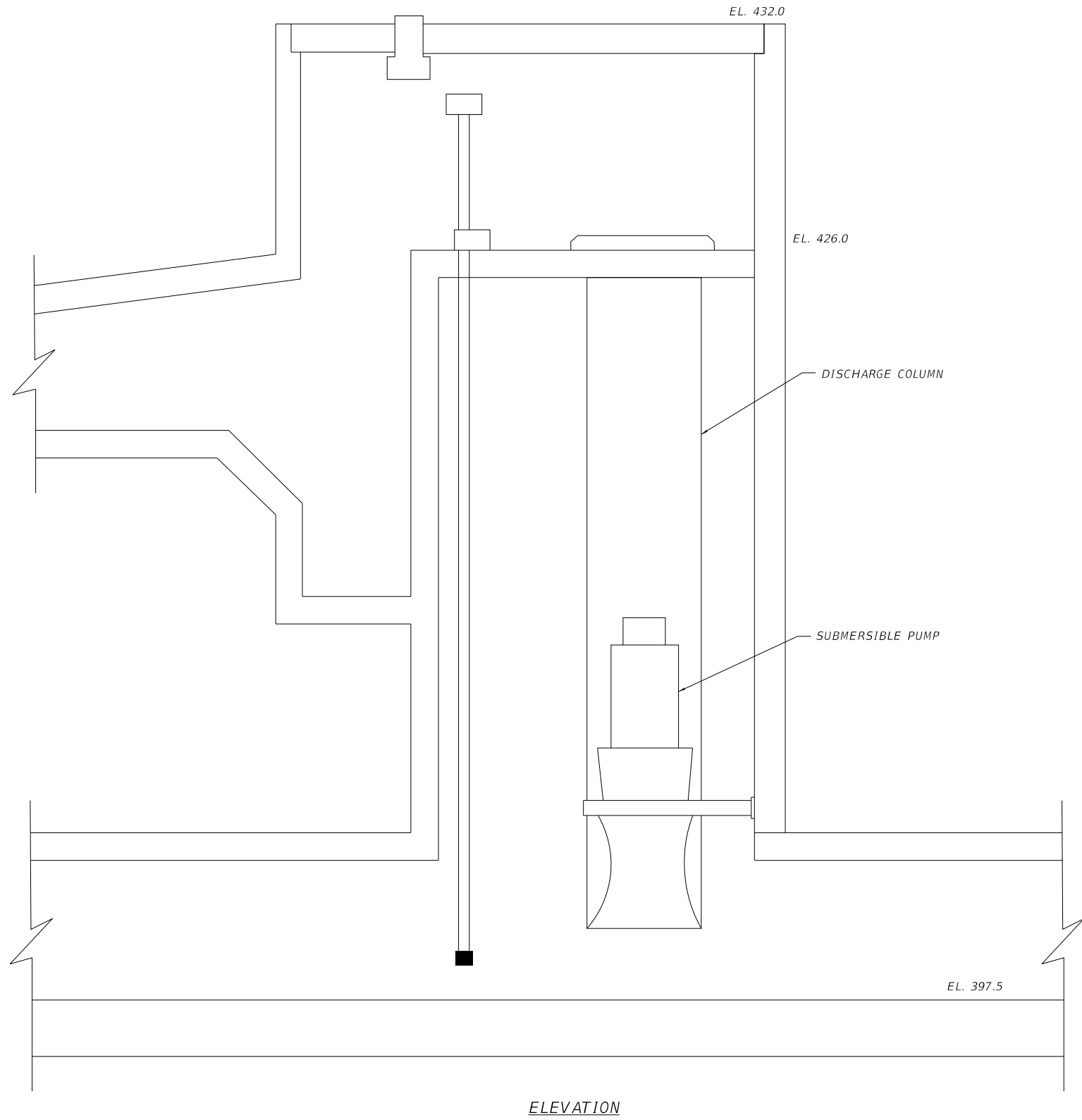
F.A.I. RTE.	SECTION	COUNTY	TOTAL SHEETS	SHEET NO.
255	60-(7,8)PS-2	MADISON	4	2
CONTRACT NO. 76N79				ILLINOIS



ELEVATION

USER NAME = oms	DESIGNED - AMS	REVISED -
	CHECKED - EBB	REVISED -
PLOT SCALE = 2 1/2" = 1'-0"	DRAWN - AMS	REVISED -
PLOT DATE = 3/19/2020	CHECKED - EBB	REVISED -

F.A.I. RTE.	SECTION	COUNTY	TOTAL SHEETS	SHEET NO.
255	60-(7,8)PS-2	MADISON	4	3
CONTRACT NO. 76N79			ILLINOIS	



KLINGNER & ASSOCIATES, P.C.
Engineers • Architects • Surveyors

USER NAME = oms	DESIGNED - AMS	REVISED -
	CHECKED - EBB	REVISED -
PLOT SCALE = 2:1 "x" / 1"v	DRAWN - AMS	REVISED -
PLOT DATE = 3/19/2020	CHECKED - EBB	REVISED -

**STATE OF ILLINOIS
DEPARTMENT OF TRANSPORTATION**

**COLLINSVILLE #2 PUMP STATION
ELEVATION**

SCALE: NONE SHEET 1 OF 1 SHEET STA. TO STA.

F.A.I. RTE.	SECTION	COUNTY	TOTAL SHEETS	SHEET NO.
255	60-(7,8)PS-2	MADISON	4	4
ILLINOIS			CONTRACT NO. 76N79	