

STATE OF ILLINOIS
DEPARTMENT OF TRANSPORTATION

F.A.S. SITE	SECTION	COUNTY	TOTAL SHEETS	SHEET NO.
944	138D-BR1-8	ALEXANDER	6	1
		ILLINOIS	CONTRACT NO 78795	

FOR INDEX OF SHEETS, SEE SHEET NO. 2

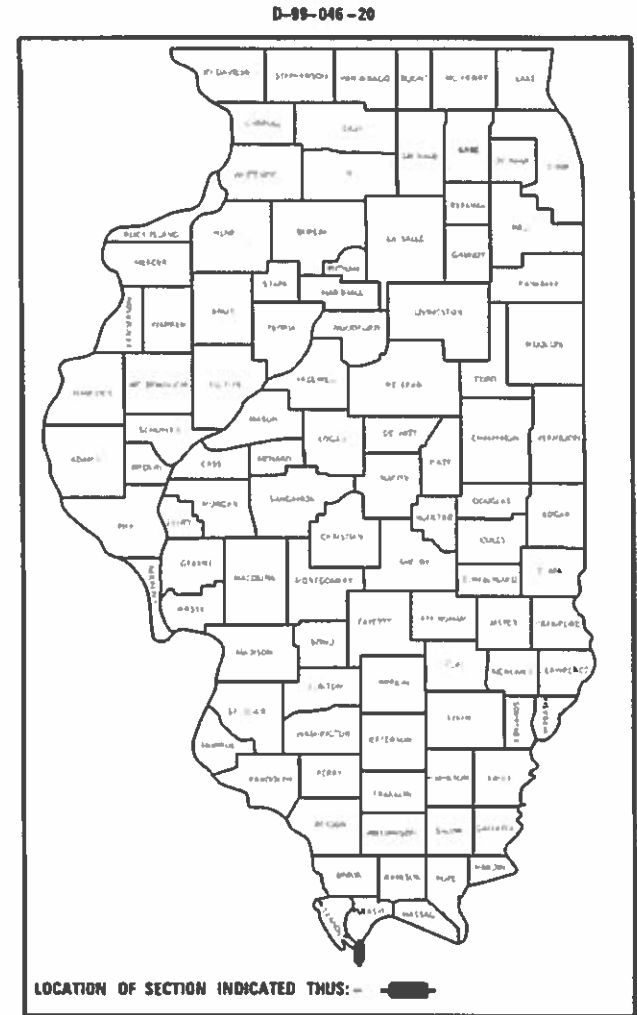
PROPOSED HIGHWAY PLANS

FAS ROUTE 944 (US 60 & 62) OVER MISSISSIPPI RIVER
SECTION (138D-BR1)-8
PROJECT STP-KVC8(216)
PIER REPAIR
ALEXANDER COUNTY IL /MISSISSIPPI COUNTY MO

TRAFFIC DATA

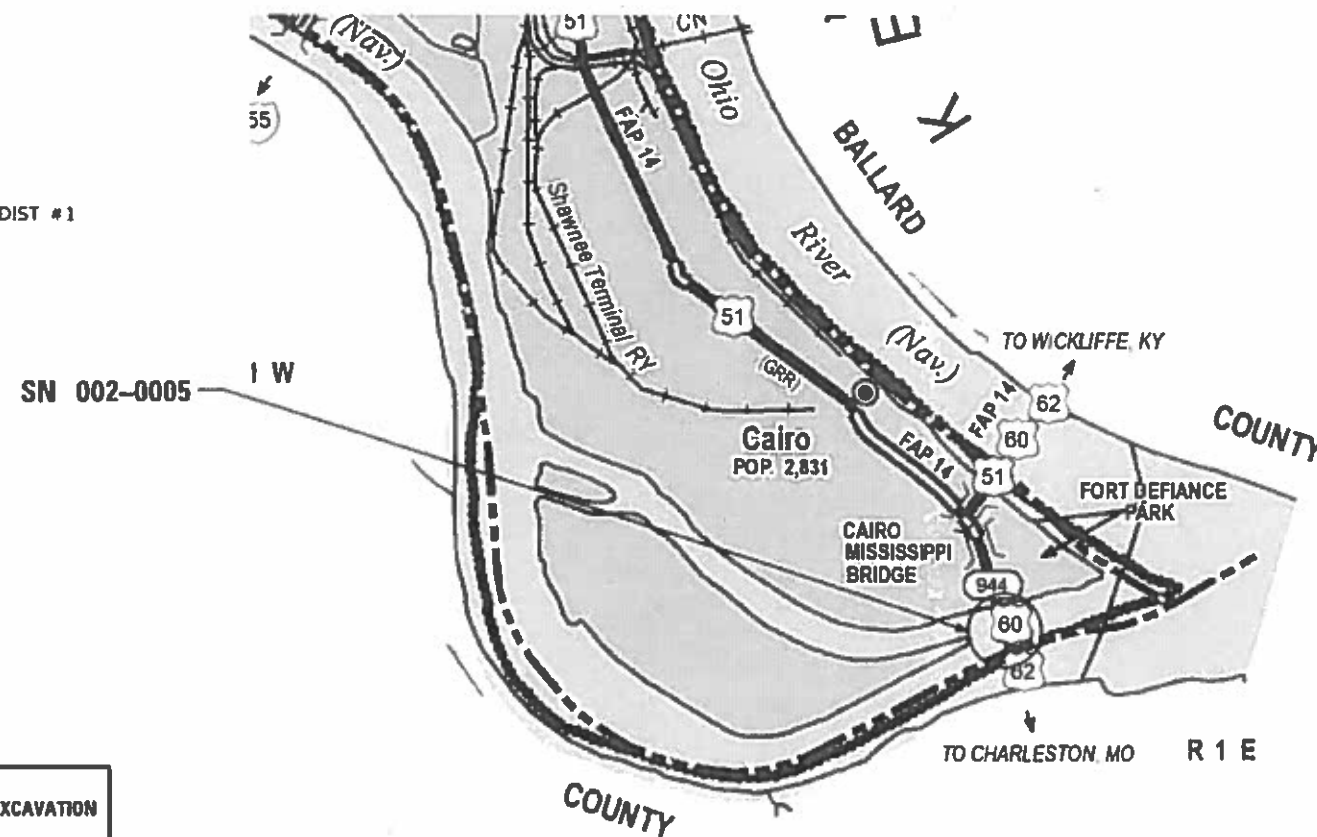
FAS 944 (US 60 & 62) 2020 ADT = 2780 WITH 26.1% TRUCKS

C-99-068-20



TOWNSHIPS

ALEXANDER CO UNIT ROAD DIST #1



POSTED SPEED : 55 MPH

J.U.L.I.E.
JOINT UTILITY LOCATION INFORMATION FOR EXCAVATION
1-800-892-0123
OR 811

PROJECT ENGINEER DAVID PICHE
PROJECT DESIGNER NATHANIEL MORRIS

CONTRACT NO. 78795

GROSS LENGTH = 5181.4 FT.

STATE OF ILLINOIS
DEPARTMENT OF TRANSPORTATION

SUBMITTED 03-04-2020

[Signature]
REGION FIVE ENGINEER

MAY 8 20 20 *[Signature]*
ENGINEER OF DESIGN AND ENVIRONMENT

MAY 8 20 20 *[Signature]*
DIRECTOR OF HIGHWAYS PROJECT IMPLEMENTATION

PRINTED BY THE AUTHORITY
OF THE STATE OF ILLINOIS

MOFF: D:\e\air\... FILE NAME: ...

Prepared By: Charles Stein
DISTRICT STUDIES & PLANS ENGINEER

Examined By: Nancy Lee
DISTRICT LAND ACQUISITION ENGINEER

Examined By: Car M
DISTRICT PROGRAM DEVELOPMENT ENGINEER

Examined By: Kelley
DISTRICT OPERATIONS ENGINEER

Examined By: [Signature]
DISTRICT PROJECT IMPLEMENTATION ENGINEER

Examined By: Doug J. [Signature]
DISTRICT CONSTRUCTION ENGINEER

Examined By: Robert Graeff (AWH)
DISTRICT MATERIALS ENGINEER

USER NAME = MORRISNR	DESIGNED - _____	REVISED - _____
PLOT SCALE = 100 0000 ' / in.	DRAWN - _____	REVISED - _____
PLOT DATE = 2/27/2020	CHECKED - _____	REVISED - _____
	DATE - _____	REVISED - _____

**STATE OF ILLINOIS
DEPARTMENT OF TRANSPORTATION**

SIGNATURE SHEET

SCALE: _____	SHEET _____ OF _____ SHEETS	STA. _____ TO STA. _____	F.A.S. RTE. 944	SECTION (138D-BR)-8	COUNTY ALEXANDER	TOTAL SHEETS 6	SHEET NO. 2
						CONTRACT NO. 78795	
ILLINOIS FED. AID PROJECT							

GENERAL NOTES

- COMMITMENTS:
 1. MoDOT and KYTC contact requirements.
 See Special Provisions.

HIGHWAY STANDARDS

- 000001-07 STANDARD SYMBOLS ABBREVIATIONS & PATTERNS
 701001-02 OFF-RD OPERATIONS 2L2W 15FT MIN FROM EOP
 701006-05 OFF-RD OPERATIONS 2L2W 15FT TO EOP
 BLR21-9 TYPICAL APPLICATION OF TRAFFIC CONTROL DEVICES FOR CONSTRUCTION ON RURAL LOCAL HWYS

INDEX OF SHEETS

1. COVER SHEET
2. SIGNATURE SHEET
3. GENERAL NOTES, HIGHWAY STANDARDS, INDEX OF SHEETS SN 002-0005
4. SUMMARY OF QUANTITIES SN 002-0005
5. TRAFFIC CONTROL PLAN & MESSAGE BOARD PLACEMENT SN 002-0005
6. PIER REPAIR SHEET

MOE:\1_Default
 FILE NAME: P:\planning\constr.dwg
 I:\projects\78795\CADD\Drawings\DOT_Offices\Drawings\78795\CADD\Drawings\DOT_78795_Sheets.dwg

USER NAME = WILSONDA	DESIGNED -	REVISED -	STATE OF ILLINOIS DEPARTMENT OF TRANSPORTATION	GENERAL NOTES, HIGHWAY STANDARDS, INDEX OF SHEETS SN 002-0005	F.A.S. RTE.	SECTION	COUNTY	TOTAL SHEETS	SHEET NO.	
	DRAWN -	REVISED -			944	(138D-BR)-8	ALEXANDER	6	3	
PLOT SCALE = 100.0000 ' / in.	CHECKED -	REVISED -			CONTRACT NO. 78795					
PLOT DATE = 3/16/2020	DATE -	REVISED -			ILLINOIS FED. AID PROJECT					
				SCALE:	SHEET	OF	SHEETS	STA.	TO STA.	

SUMMARY OF QUANTITIES

COUNTY:	ALEXANDER	MISSISSIPPI
ROUTE:	US 60 & 62	US 60 & 62
FUNDING:	80% FED / 20% STATE	100% MISSOURI
LOCATION:	RURAL	RURAL
TOTAL QUANTITY	SN 002-0005	SN 002-0005
	0013	0013

CODE NUMBER	ITEM DESCRIPTION	UNIT	TOTAL QUANTITY	SN 002-0005	SN 002-0005
				0013	0013
50800205	REINFORCEMENT BARS, EPOXY COATED	POUND	30	15	15
52100520	ANCHOR BOLTS, 1"	EACH	4	2	2
58700300	CONCRETE SEALER	SQ FT	35.2	17.6	17.6
67100100	MOBILIZATION	L SUM	1	0.5	0.5
70107025	CHANGEABLE MESSAGE SIGN	CAL DA	282	141	141
X7011800	TRAFFIC CONTROL AND PROTECTION, STANDARD BLR 21	L SUM	1	0.5	0.5
Z0012755	STRUCTURAL REPAIR OF CONCRETE (DEPTH GREATER THAN 5 INCHES)	SQ FT	36	18	18
Z0073200	TEMPORARY SHORING AND CRIBBING	EACH	2	1	1

M:\E:\Default\paulbarson.dwt\Illinois\p138D\DOT\Documents\DOT_Offices\District_9\Projects\78795\CADD\Sheet\0778795-Sheets.dgn

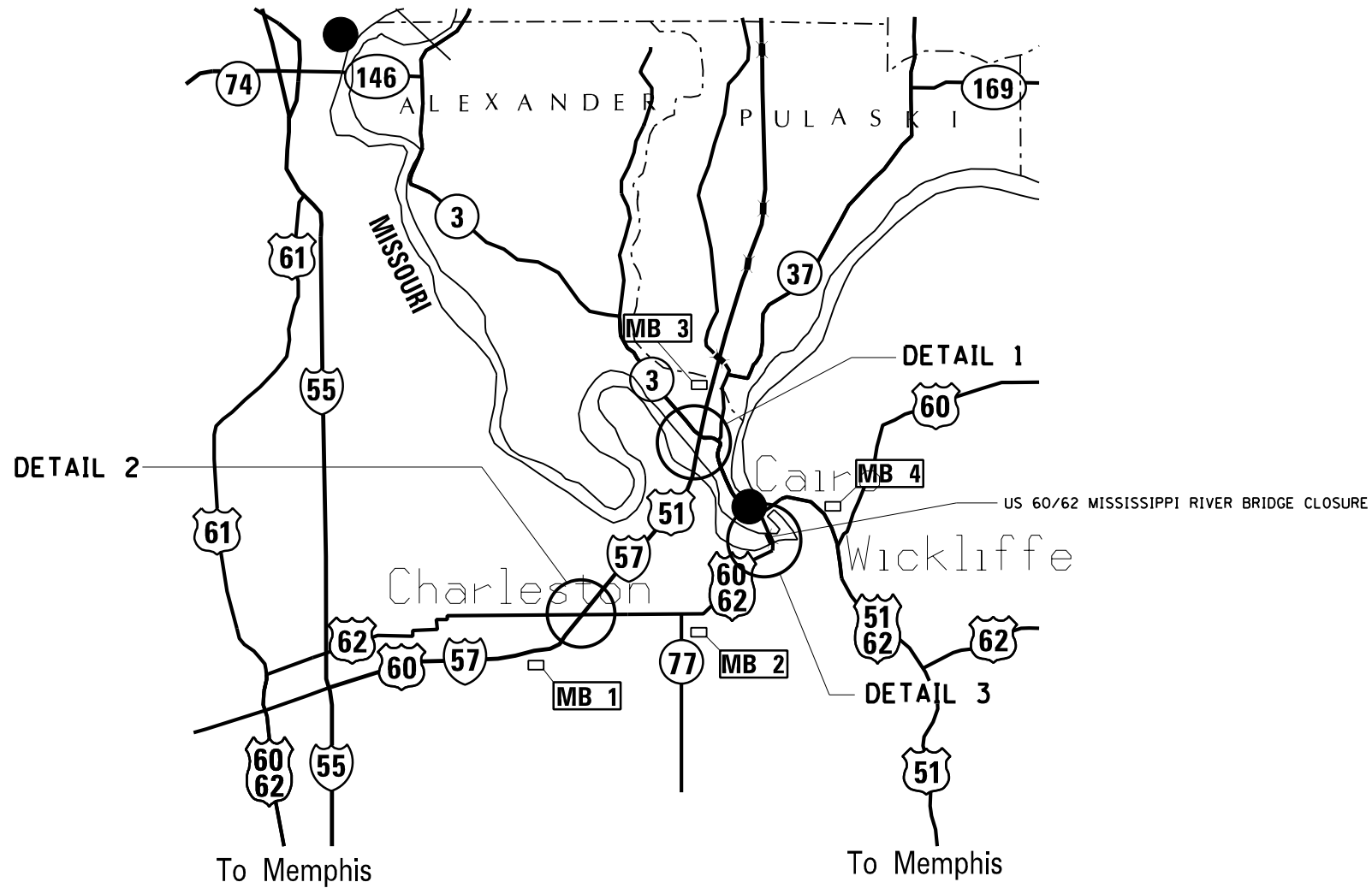
USER NAME = WILSONDA	DESIGNED -	REVISED -
	DRAWN -	REVISED -
PLOT SCALE = 100.0000' / in.	CHECKED -	REVISED -
PLOT DATE = 3/16/2020	DATE -	REVISED -

**STATE OF ILLINOIS
DEPARTMENT OF TRANSPORTATION**

**SUMMARY OF QUANTITIES
SN 002-0005**

SCALE: SHEET OF SHEETS STA. TO STA.

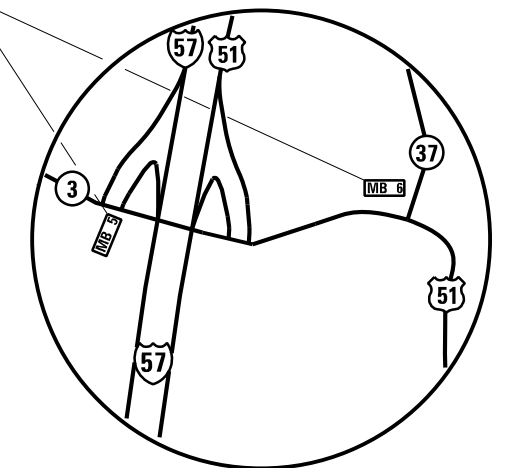
F.A.S. RTE.	SECTION	COUNTY	TOTAL SHEETS	SHEET NO.
944	(138D-BR)-8	ALEXANDER	6	4
			CONTRACT NO. 78795	
ILLINOIS FED. AID PROJECT				



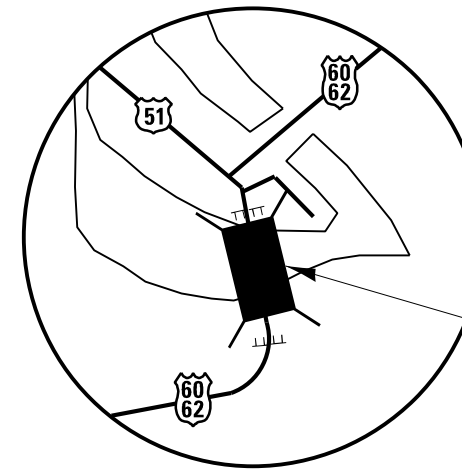
60/62 BRIDGE
TO MISSOURI
CLOSED AHEAD

USE
OTHER
ROUTES

Message Typical all signs (Illinois)
Actual message subject
to approval of the Engineer.



DETAIL 1
(SHARED COST)



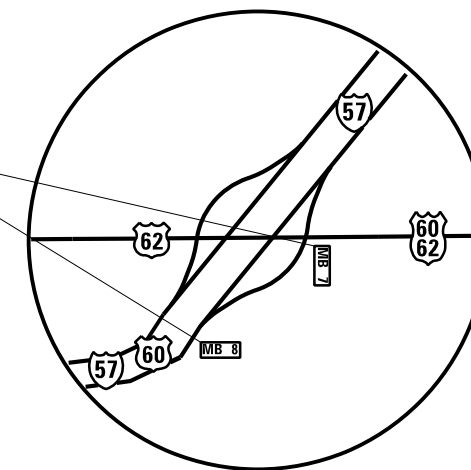
DETAIL 3
(SHARED COST)

SEE HIGHWAY STANDARD B.L.R. 21-9 FOR DETAILS
AND SIGNS, COST INCLUDED WITH TRAFFIC CONTROL AND
PROTECTION, BLR 21.

60/62 BRIDGE
TO ILLINOIS
CLOSED AHEAD

USE
OTHER
ROUTES

Message Typical all signs (Missouri/Kentucky)
Actual message subject
to approval of the Engineer.



DETAIL 2
(SHARED COST)

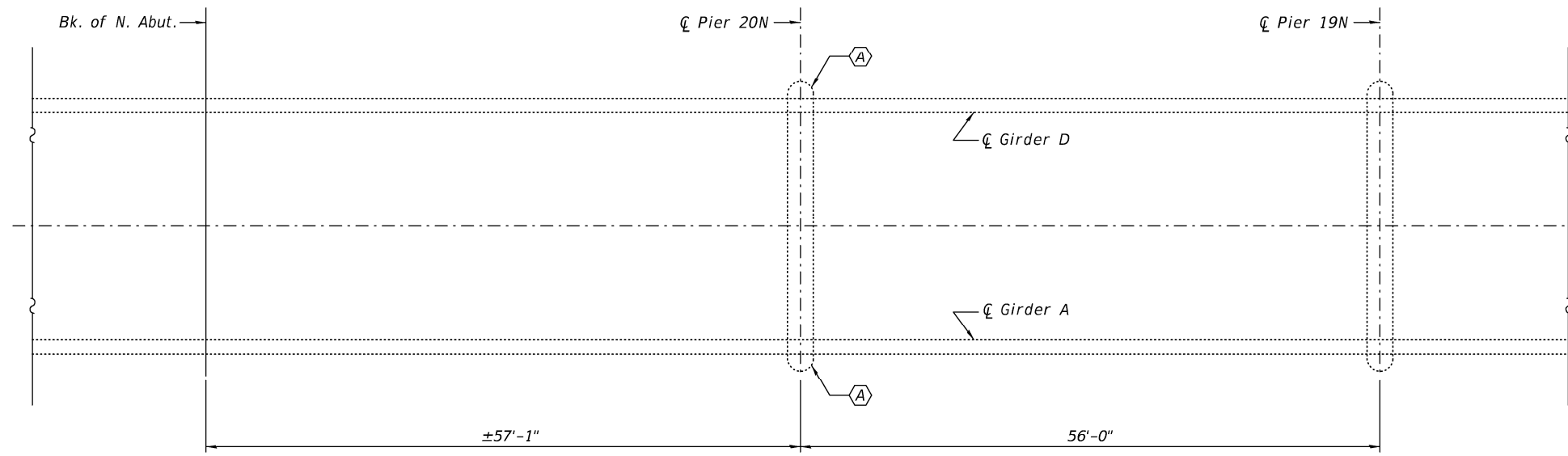
STATE OF ILLINOIS
DEPARTMENT OF TRANSPORTATION

TRAFFIC CONTROL PLAN & MESSAGE BOARD PLACEMENT
SN 002-0005

F.A.S. RTE.	SECTION	COUNTY	TOTAL SHEETS	SHEET NO.
944	(138D-BR)-8	ALEXANDER	6	5
CONTRACT NO. 78795				
ILLINOIS FED. AID PROJECT				

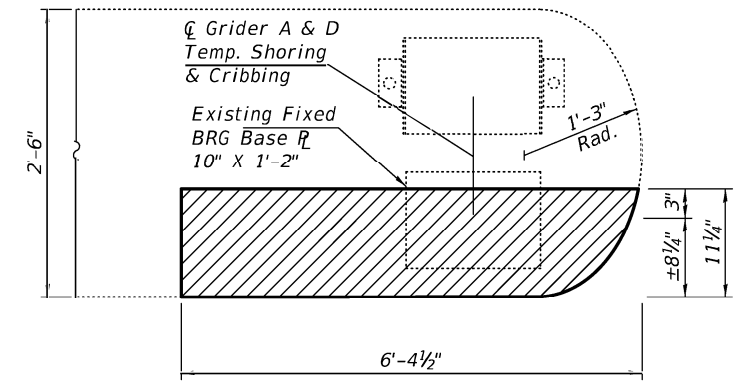
SCALE: SHEET OF SHEETS STA. TO STA.

USER NAME = WILSONDA	DESIGNED -	REVISED -
	DRAWN -	REVISED -
PLOT SCALE = 100.0000' / in.	CHECKED -	REVISED -
PLOT DATE = 3/16/2020	DATE -	REVISED -



PARTIAL PLAN

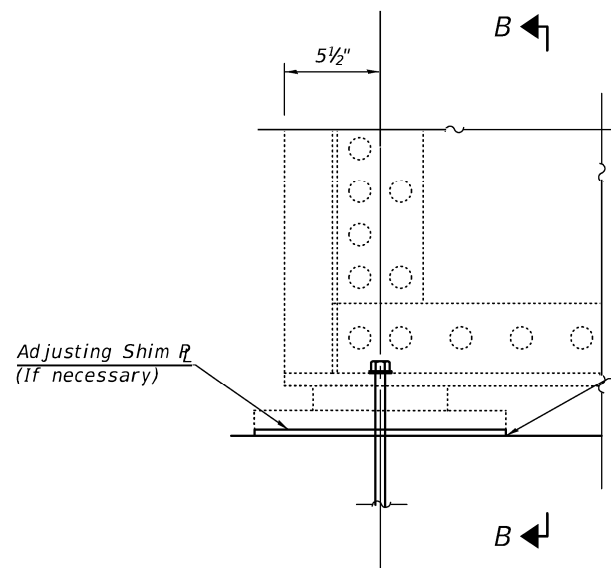
(A) - Structural Repair of Concrete



PLAN

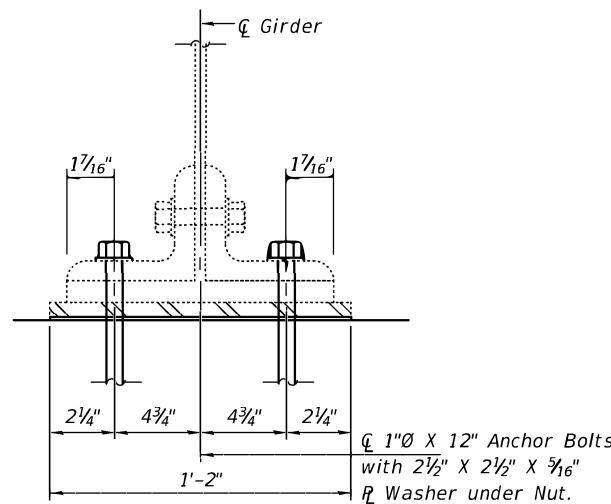
(East End Shown, West End Similar)

Hatched area indicates limits of structural repair of concrete, depth >5".

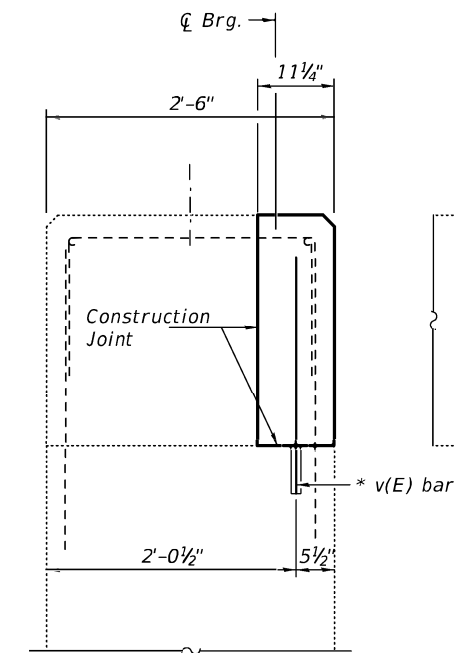


EXISTING BEARING ELEVATION

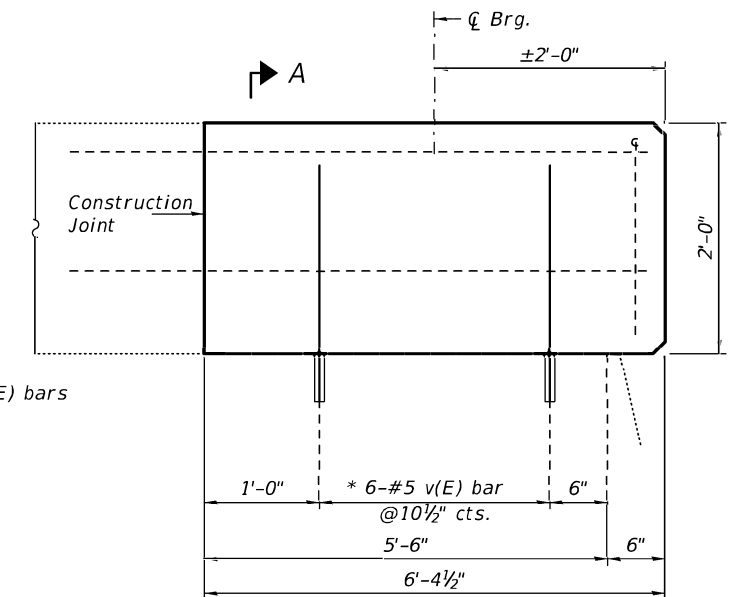
1/8" elastomeric neoprene leveling pad according to the material properties of Article 1052.02(a) of Standard Specs. Cost included with anchor bolts. 1"Ø.



SECTION B-B



SECTION A-A



ELEVATION
(Looking North)

* Epoxy grout v(E) bars in 9" min. holes according to article 584 of std. specs.

BILL OF MATERIAL

Bar	No.	Size	Length	Shape
v(E)	12	#5	2'-5"	
Reinforcement Bars, Epoxy Coated			Pounds	30

GIRDER REACTION TABLE AT TEMPORARY SHORING

		Pier 20N
R _l	(K)	21
R _r	(K)	33
Imp.	(K)	9
R (Total)	(K)	63

Notes:

Existing fixed sole R & existing bottom brg. base plate will have to be removed & reinstalled while girder is shored & cribbed and while concrete beneath is removed and replaced. Anchor bolts for Fixed bearings shall be placed in holes drilled through the existing sole plate and existing base plates after members are in place. Drilled and set anchor bolts shall be installed according to Article 521.06 of Standard Specs. Anchor bolts shall be ASTM F1554 all thread (or an Engineer-approved alternative material) of the grade(s) and diameter(s) specified ASTM F1554 Grade 36 (Fy=36ksi). The corresponding specified grade of AASHTO M314 anchor bolts may be used in lieu of ASTM F1554. Reinforcement bars designated (E) shall be epoxy coated. Existing reinforcement bars extending into the removal area shall be cleaned, straightened and incorporated into the new construction. Any reinforcement bars that are damaged during concrete removal shall be replaced with an approved bar splicer or anchorage system. Cost included with Structural Repair of Concrete (Depth ≥ 5").

TOTAL BILL OF MATERIAL

ITEM	UNIT	QUANTITY
Concrete Sealer	Sq. Ft.	35.2
Reinforcement Bars, Epoxy Coated	Pound	30
Anchor Bolts 1" Ø	Each	4
Temporary Shoring & Cribbing	Each	2
Structural Repair of Concrete (Depth ≥ 5")	Sq. Ft.	36



DESIGNED - STEPHEN M. RYAN	EXAMINED - [Signature]	DATE - APRIL 21, 2020
CHECKED - CHI-CHEUNG CHAU	PASSED - [Signature]	REVISIONS -
DRAWN - Venkat Reddy	ENGINEER OF BRIDGES AND STRUCTURES	REVISIONS -
CHECKED - SMR CCC		

STATE OF ILLINOIS
DEPARTMENT OF TRANSPORTATION

PIER REPAIR
U.S. 62 OVER MISSISSIPPI RIVER
SN 002 - 0005

SHEET NO. 1 OF 1 SHEETS

F.A. RTE. 62	SECTION (138D-BR) 8	COUNTY ALEXANDER	TOTAL SHEETS 6	SHEET NO. 6
CONTRACT NO. 78795			ILLINOIS FED. AID PROJECT	