

1. COVER SHEET
2. GENERAL NOTES
3. SUMMARY OF QUANTITIES
4. TYPICAL SECTIONS
5. SCHEDULES
- 6 - 7. CLASS B PATCHING DETAILS
8. MISCELLANEOUS DETAILS

STANDARDS

- 701001-02 OFF-ROAD OPERATIONS 2L, 2W, MORE THAN 15' (4.5 m) AWAY
- 701006-05 OFF-ROAD OPERATIONS 2L, 2W, 15' (4.5 m) TO 24" (600 mm) FROM PAVEMENT EDGE
- 701336-07 LANE CLOSURE, 2L, 2W, WORK AREAS IN SERIES, FOR SPEEDS ≥ 45 MPH
- 701901-08 TRAFFIC CONTROL DEVICES

STATE OF ILLINOIS
DEPARTMENT OF TRANSPORTATION

**PROPOSED
HIGHWAY PLANS**

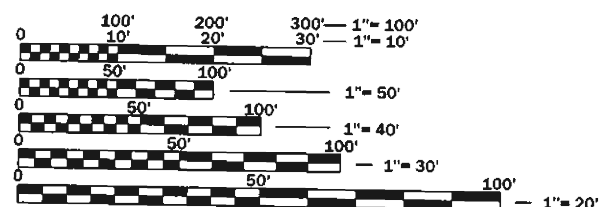
FAS ROUTE 315 (US 52)
SECTION D3 US 52 PP 2020-10
PAVEMENT PATCHING
IROQUOIS COUNTY
C-93-092-19

F.A.S. RTE.	SECTION	COUNTY	TOTAL SHEETS	SHEET NO.
315	D3 US 52 PP 2020-10	IROQUOIS	8	1
		ILLINOIS	CONTRACT NO. 66K08	



BEGIN IMPROVEMENT
+ - 2700 FT. N. OF US 24
STA. 32+05

END IMPROVEMENT
INTERSECTION OF US 52
AND US 24/52 INTERSECTION
STA. 5+05



FULL SIZE PLANS HAVE BEEN PREPARED USING STANDARD ENGINEERING SCALES. REDUCED SIZED PLANS WILL NOT CONFORM TO STANDARD SCALES. IN MAKING MEASUREMENTS ON REDUCED PLANS, THE ABOVE SCALES MAY BE USED.

J.U.L.I.E.
JOINT UTILITY LOCATION INFORMATION FOR EXCAVATION
1-800-892-0123
OR 811

PROJECT ENGINEER JOE KANNEL P.E.
UNIT CHIEF RON WOODSHANK
DISTRICT 3 NO. (815) 434-6131
CONTRACT NO. 66K08

GROSS LENGTH = 2700 FT. = 0.51 MILE
NET LENGTH = 2700 FT. = 0.51 MILE

FUNCTIONAL CLASSIFICATION
RURAL
MAJOR COLLECTOR
F.A.S. ROUTE 315 (US 52)
2019 ADT = 1300
P.V. 75.77% S.U. 3.08% M.U. 21.15%

STATE OF ILLINOIS
DEPARTMENT OF TRANSPORTATION

SUBMITTED *March 17 2020*
[Signature]
REGIONAL ENGINEER

May 8, 2020 *[Signature]*
ENGINEER OF DESIGN AND ENVIRONMENT

May 8, 2020 *[Signature]*
DIRECTOR OF HIGHWAYS PROJECT IMPLEMENTATION 13

**PRINTED BY THE AUTHORITY
OF THE STATE OF ILLINOIS**

GENERAL NOTES

FOR STABILIZATION, ALL TYPE III BARRICADES WILL REQUIRE A MINIMUM OF FOUR SAND BAGS PER BARRICADE.

ALL EXCAVATED MATERIAL, WHICH INCLUDES DIGGING OR GRADING OF ANY SOIL OR FILL MATERIAL, WITH THE EXCEPTION OF AGGREGATE FILLS, MUST BE INCORPORATED WITHIN THE IDOT RIGHT OF WAY DUE TO ENVIRONMENTAL DOCUMENTATION REQUIREMENTS.

ANY REFERENCE TO A STANDARD IN THESE PLANS SHALL BE INTERPRETED TO MEAN THE EDITION AS INDICATED BY THE SUBNUMBER SHOWN IN THE LIST OF STANDARDS OR THE COPY INCLUDED IN THESE PLANS.

THE CONTRACTOR SHALL CONTACT JULIE AT LEAST 48 HOURS PRIOR TO EXCAVATION TO DETERMINE WHICH UTILITIES ARE IN THE AREA.

COMMITMENTS

STATE OF ILLINOIS
DEPARTMENT OF TRANSPORTATION
DISTRICT THREE
AS BUILT INFORMATION

SUPERVISING CONSTRUCTION FIELD ENGINEER

RESIDENT ENGINEER / TECHNICIAN

START & END DATES
OF CONSTRUCTION:

INSPECTORS:

STATE OF ILLINOIS
DEPARTMENT OF TRANSPORTATION
DISTRICT THREE

PREPARED BY: *Don Bannell*
DISTRICT STUDIES & PLANS ENGINEER

DATE: March 17, 2020

EXAMINED BY: *[Signature]*
DISTRICT CONSTRUCTION ENGINEER

[Signature]
DISTRICT MATERIALS ENGINEER

[Signature]
DISTRICT OPERATIONS ENGINEER

STATE OF ILLINOIS
DEPARTMENT OF TRANSPORTATION

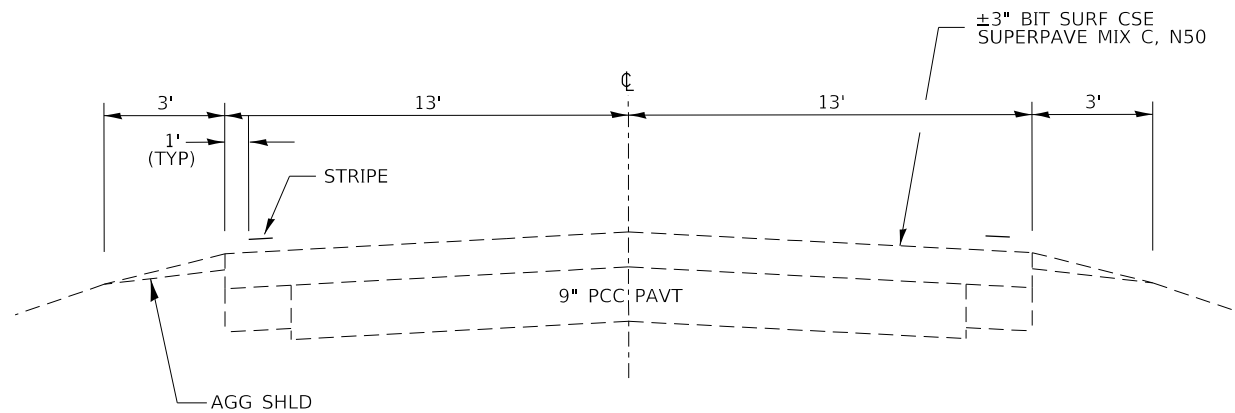
GENERAL NOTES

FILE NAME =	USER NAME = MARINIEJ	DESIGNED - EVAN MARINI	REVISED -
pw:\planroom.dot\illinois.gov\FWIDOT\Documents\IDOT	\\saw\District 3\Projects\0366K08\CAD\Delta\66K08-cover.dgn	DRAWN - EVAN MARINI	REVISED -
Default	PLOT SCALE = 3.9359 / mm	CHECKED - RON WOODSHANK	REVISED -
	PLOT DATE = 2/4/2020	DATE - 1/22/2019	REVISED -

SCALE: SHEET 1 OF 1 SHEETS STA. TO STA.

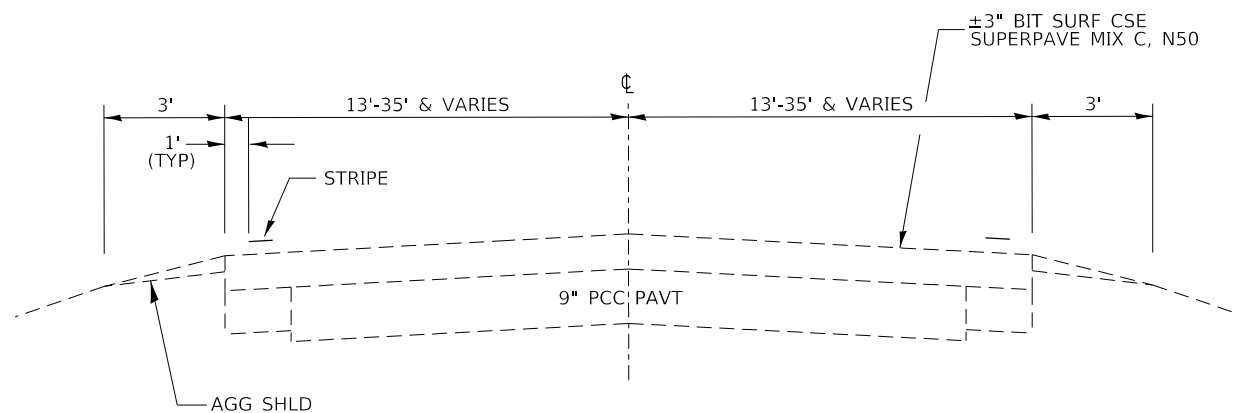
F.A.S. RTE.	SECTION	COUNTY	TOTAL SHEETS	SHEET NO.
315	D3 US 52 PP 2020-10	IROQUOIS	8	2
CONTRACT NO. 66K08				
ILLINOIS FED. AID PROJECT				

CODE NO.	ITEM	UNIT	TOTAL QUANTITY	CONSTR. CODE	
				CONTRACT MAINTENANCE	
				100% STATE	
				ROADWAY	0006
				RURAL	
42000060	WELDED WIRE REINFORCEMENT	SQ YD	24		24
44200994	CLASS B PATCHES, TYPE II, 12 INCH	SQ YD	406		406
44200998	CLASS B PATCHES, TYPE III, 12 INCH	SQ YD	24		24
44201299	DOWEL BARS 1 1/2"	EACH	900		900
44213200	SAW CUTS	FOOT	2226		2226
67100100	MOBILIZATION	L SUM	1		1
70100600	TRAFFIC CONTROL AND PROTECTION, STANDARD 701336	L SUM	1		1
70107025	CHANGEABLE MESSAGE SIGN	CAL DA	14		14
Z0017099	DOWEL BAR ASSEMBLY	EACH	1		1
Z0030850	TEMPORARY INFORMATION SIGNING	SQ FT	42		42



TYPICAL SECTION 1

STA. 32+05 TO STA. 25+19



TYPICAL SECTION 2

STA. 25+19 TO STA. 5+05

FILE NAME -	USER NAME - MARINIEJ	DESIGNED - EVAN MARINI	REVISED -	STATE OF ILLINOIS DEPARTMENT OF TRANSPORTATION	TYPICAL SECTION			F.A.S. RTE.	SECTION	COUNTY	TOTAL SHEETS	SHEET NO.			
pw2\planroom\dotillinois.gov\PWIDOT\Documents\IDOT\Office\District 3\Projects\I366K08\CADData\66K08-cover.dgn		DRAWN - EVAN MARINI	REVISED -		SCALE:	SHEET 1	OF 1	SHEETS	STA.	TO STA.	315	D3 US 52 PP 2020-10	IROQUOIS	8	4
Default		CHECKED - RON WOODSHANK	REVISED -								CONTRACT NO. 66K08				
		DATE - 1/22/2019	REVISED -								ILLINOIS FED. AID PROJECT				

PATCHING SCHEDULE - US 52

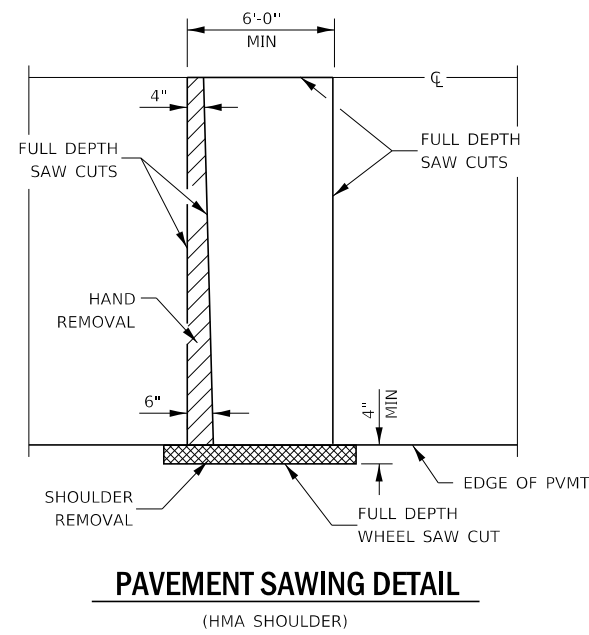
NORTHBOUND LANE						
LOCATION	PATCH LENGTH	CLASS B		DOWEL BARS 1 1/2"	SAW CUTS	WELDED WIRE REINF.
		TYPE II 12"	TYPE III 12"			
STATION	(FT)	SQ YD	SQ YD	EACH	FOOT	SQ YD
6+21	6	9		20	48	
6+75	7	10		20	50	
7+75	8	12		20	52	
8+75	6	9		20	48	
9+07	6	9		20	48	
9+75	6	9		20	48	
9+87	6	9		20	48	
10+00	6	9		20	48	
10+50	6	9		20	48	
10+75	6	9		20	48	
11+75	7	10		20	50	
12+75	8	12		20	52	
13+75	8	12		20	52	
14+50	6	9		20	48	
16+50	6	9		20	48	
18+20	7	10		20	50	
18+61	8	12		20	52	
19+12	6	9		20	48	
19+50	6	9		20	48	
20+50	6	9		20	48	
21+50	6	9		20	48	
22+50	6	9		20	48	
23+50	6	9		20	48	
SUBTOTALS	149	222		460	1126	

PATCHING SCHEDULE - US 52

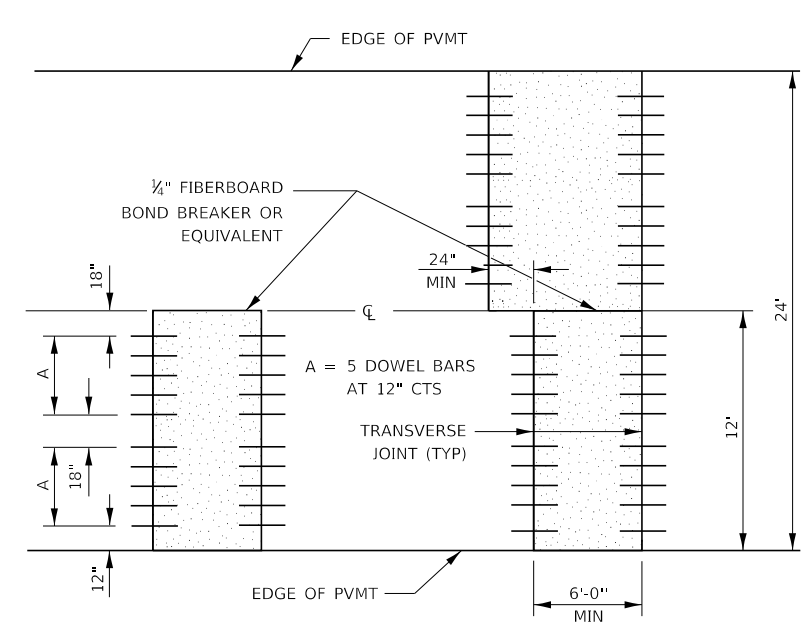
SOUTHBOUND LANE						
LOCATION	PATCH LENGTH	CLASS B		DOWEL BARS 1 1/2"	SAW CUTS	WELDED WIRE REINF.
		TYPE II 12"	TYPE III 12"			
STATION	(FT)	SQ YD	SQ YD	EACH	FOOT	SQ YD
6+30	8	12		20	52	
6+75	7	10		20	50	
7+75	6	9		20	48	
8+75	6	9		20	48	
9+00	7	10		20	50	
9+75	6	9		20	48	
10+30	6	9		20	48	
10+75	6	9		20	48	
11+75	7	10		20	50	
12+75	8	12		20	52	
13+75	6	9		20	48	
14+50	6	9		20	48	
16+50	6	9		20	48	
18+20	7	10		20	50	
18+61	8	12		20	52	
19+12	6	9		20	48	
19+50	6	9		20	48	
20+50	6	9		20	48	
21+50	6	9		20	48	
22+50	6	9		20	48	
23+50	6	9		20	48	
SUBTOTALS	136	202		420	1028	

PATCHING SCHEDULE - US 52

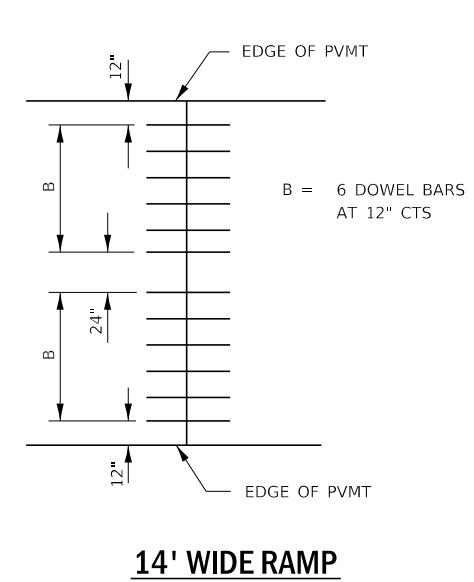
SOUTHBOUND LEFT TURN LANE						
LOCATION	PATCH LENGTH	CLASS B		DOWEL BARS 1 1/2"	SAW CUTS	WELDED WIRE REINF.
		TYPE II 12"	TYPE III 12"			
STATION	(FT)	SQ YD	SQ YD	EACH	FOOT	SQ YD
6+60	18		24	20	72	24
SUBTOTALS	18		24	20	72	24



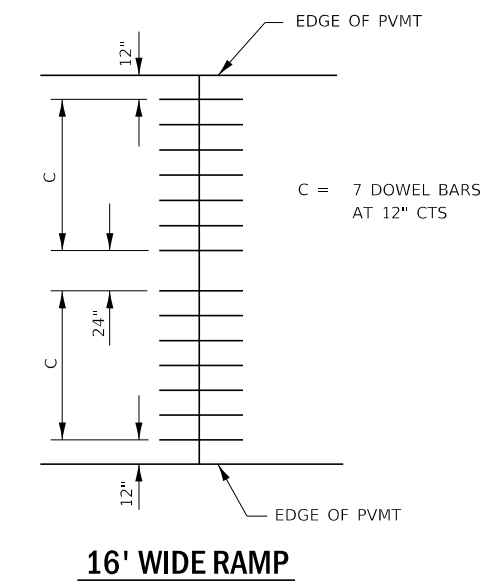
PAVEMENT SAWING DETAIL
(HMA SHOULDER)



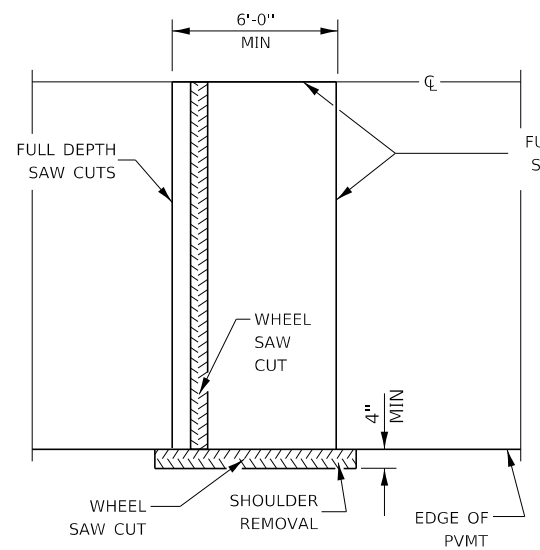
12' WIDE LANES



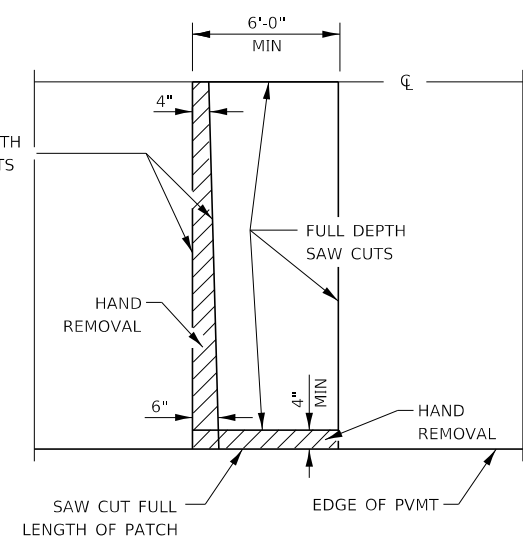
14' WIDE RAMP



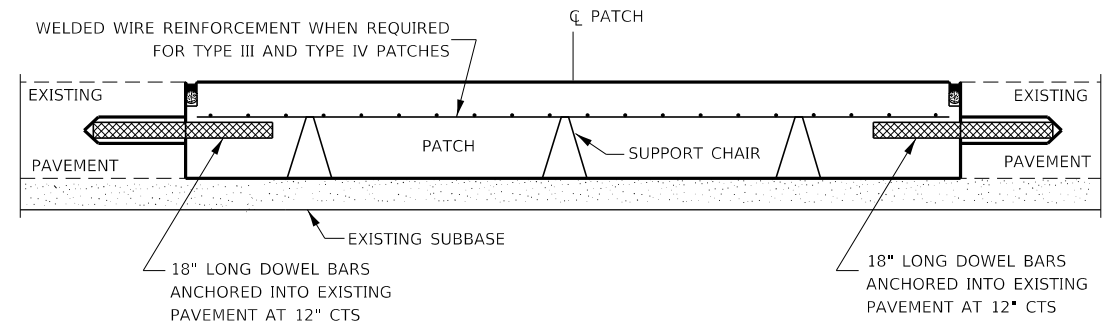
16' WIDE RAMP



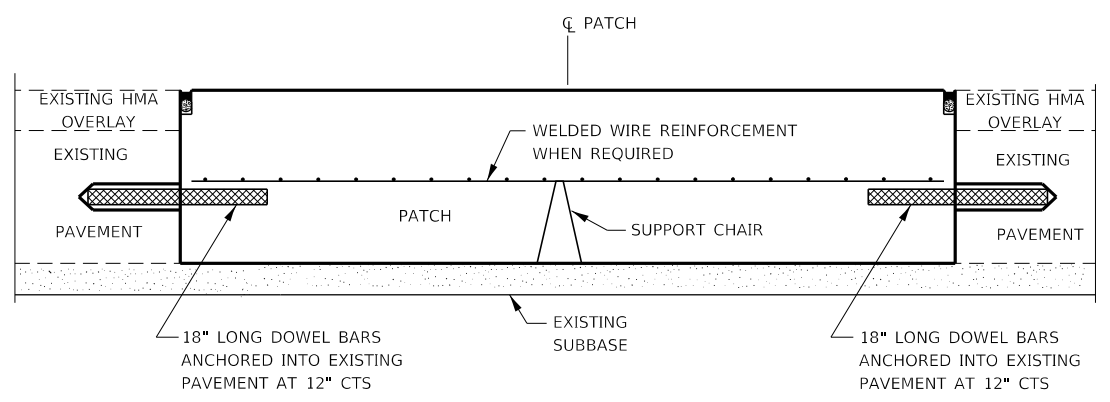
ALTERNATE SAWING DETAIL
(HMA SHOULDER)



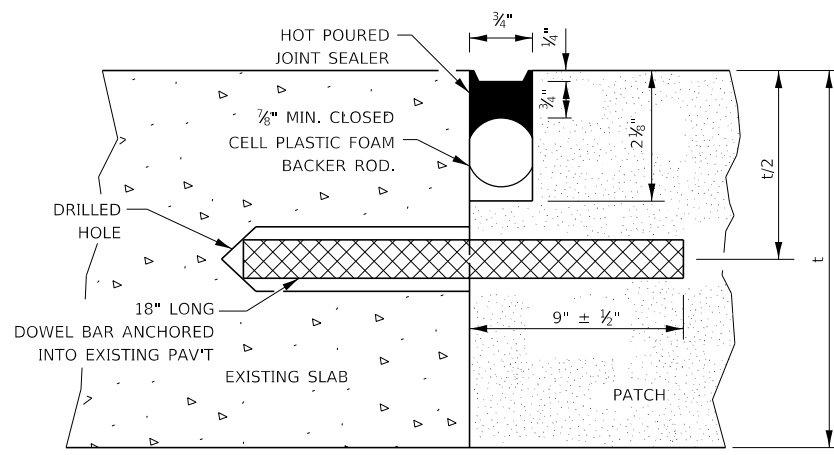
PAVEMENT SAWING DETAIL
(PCC SHOULDER)



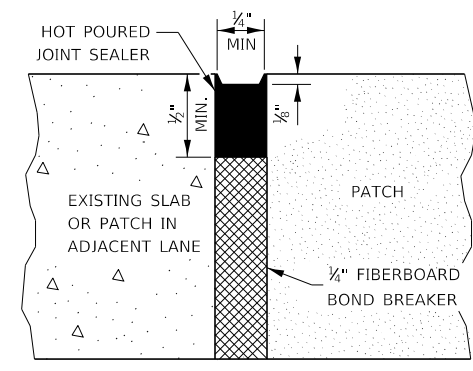
PATCHING WITHOUT HMA OVERLAY



PATCHING WITH HMA OVERLAY



TRANSVERSE JOINT



CENTERLINE JOINT

DOWEL BAR TABLE		
PAVEMENT THICKNESS	DOWEL BAR DIAMETER	HOLE DIAMETER
8" OR GREATER	1 1/2"	1 5/8"
7" THRU 7.99"	1 1/4"	1 3/8"
LESS THAN 7"	1"	1 1/8"

GENERAL NOTES

THE TRANSVERSE JOINTS FOR CLASS B PATCHES SHALL ALIGN WITH JOINTS OR CRACKS IN THE ADJACENT LANE WHENEVER POSSIBLE.
SEE STANDARD 420701 FOR DETAILS OF PAVEMENT WELDED WIRE REINFORCEMENT.

MODEL: Default
FILE NAME: p:\projects\p191\DOT Documents\DOT Office\District 3\Projects\0366\08CAD\08Data\66K08-cover.dgn

USER NAME = MARINEJ	DESIGNED - EVAN MARINI	REVISED -
PLOT SCALE = 3,9479' / mm	DRAWN - EVAN MARINI	REVISED -
PLOT DATE = 3/29/2019	CHECKED - RON WOODSHANK	REVISED -
	DATE - 1/22/2019	REVISED -

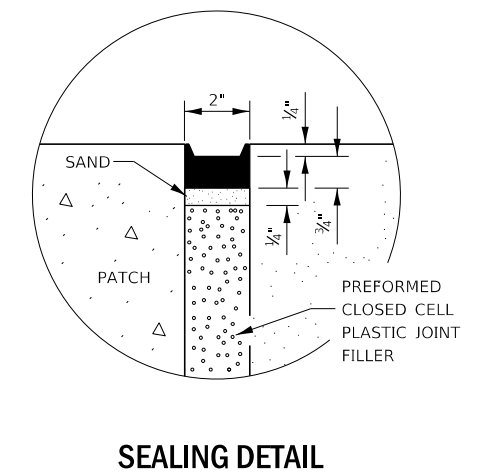
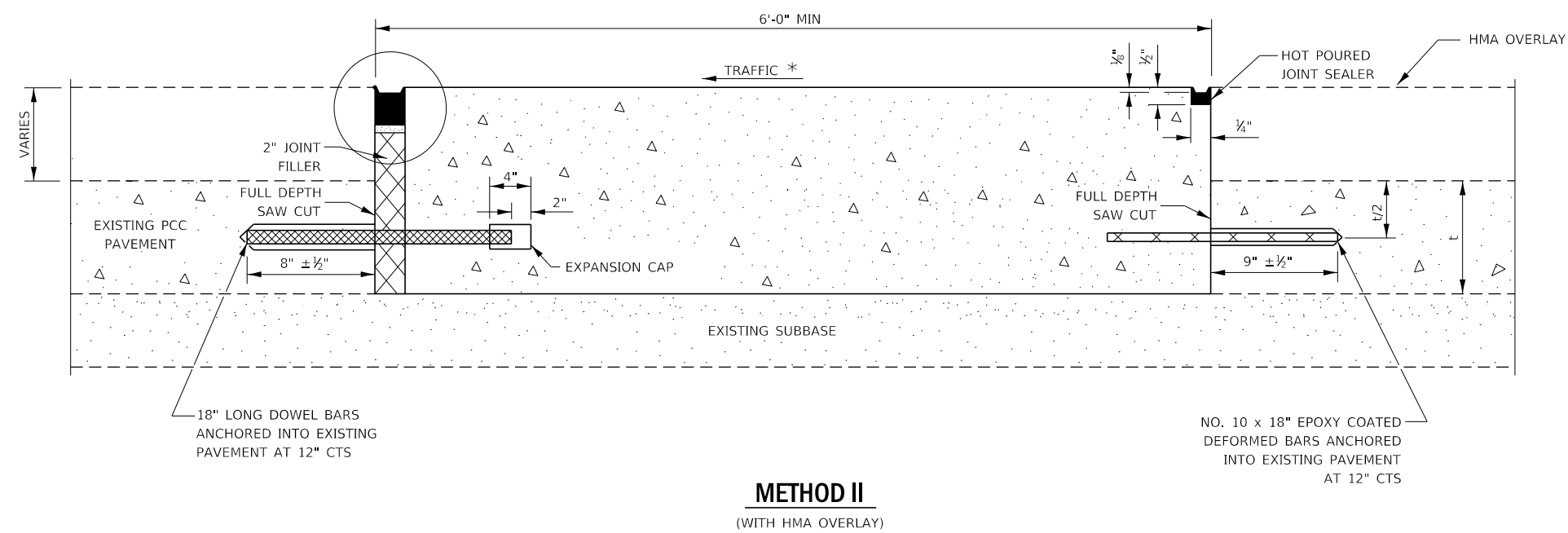
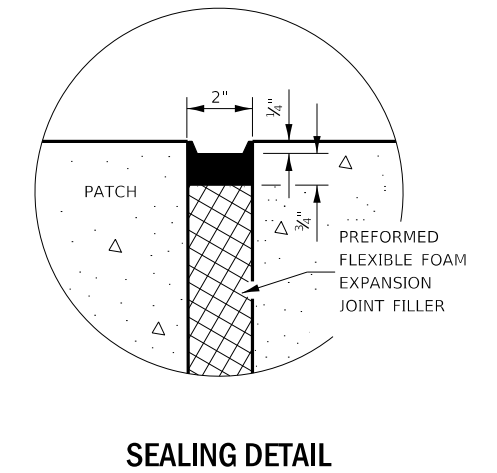
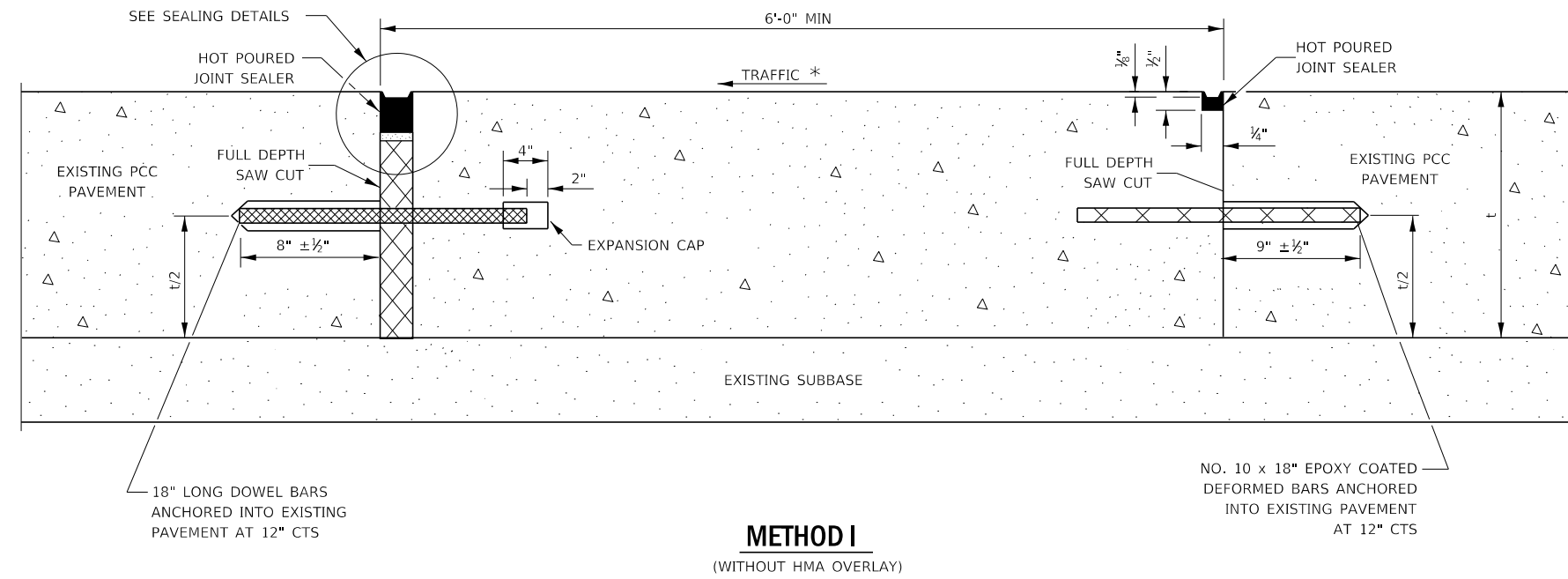
STATE OF ILLINOIS
DEPARTMENT OF TRANSPORTATION

CLASS B PATCHING DETAILS

SCALE: SHEET 1 OF 2 SHEETS STA. TO STA.

F.A.S. RTE. 315	SECTION D3 US 52 PP 2020-10	COUNTY IROQUOIS	TOTAL SHEETS 8	SHEET NO. 6
CONTRACT NO. 66K08				ILLINOIS FED. AID PROJECT

TRANSVERSE EXPANSION JOINTS



NOTE

* WHEN RE-ESTABLISHING A TRANSVERSE EXPANSION JOINT ON A TWO-WAY ROAD, REVERSE THE ORIENTATION OF THE DOWEL BARS WITH RESPECT TO TRAFFIC FOR ONE OF THE PATCHES SUCH THAT THE JOINT WILL BE CONTINUOUS ACROSS BOTH LANES.

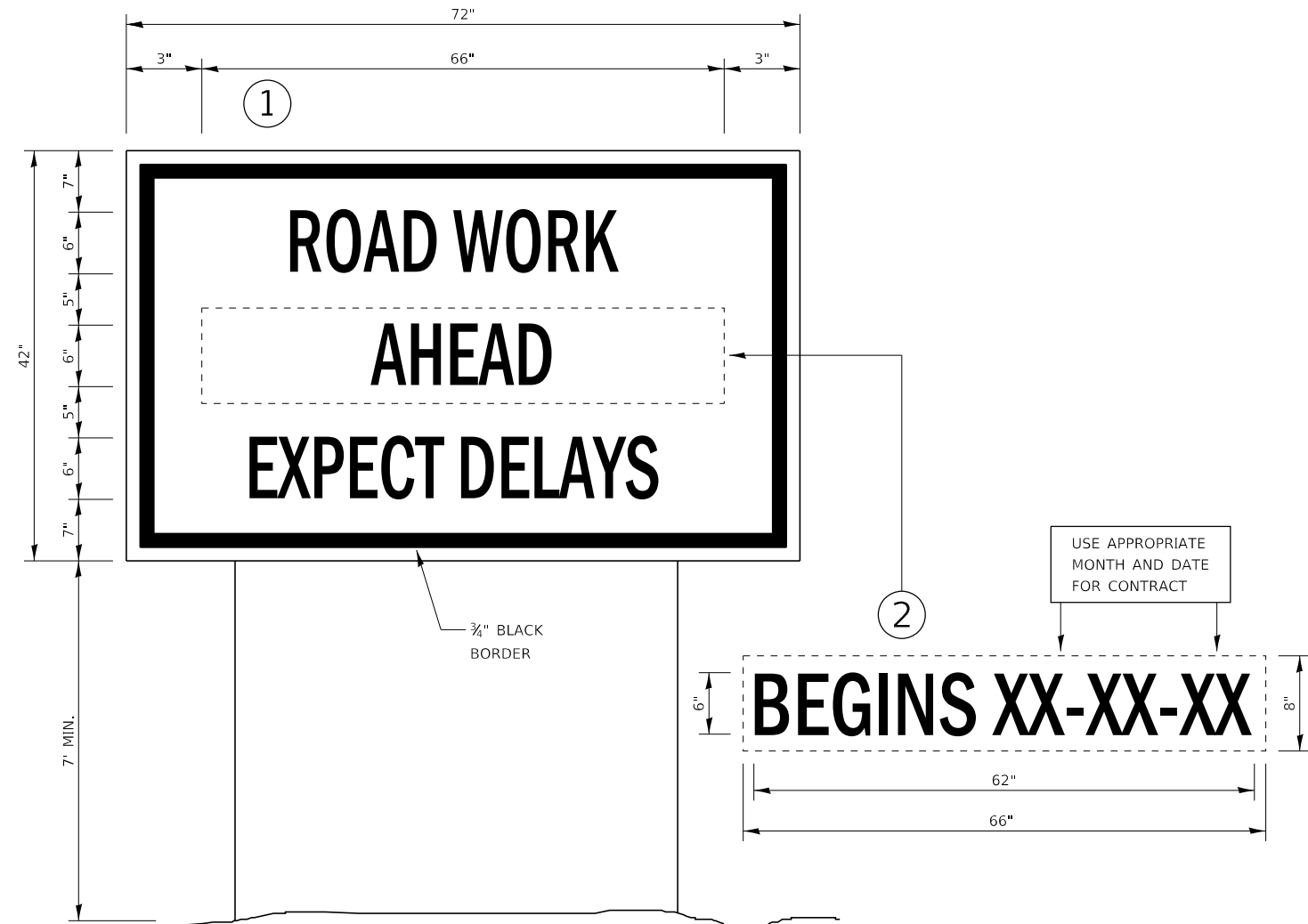
MODEL Path:\p\1\planroom.dwg
 FILE NAME: \\p\1\planroom.dwg:RWDOT\Documents\DOT_Official\B&E\3\project\315\2020-10\315-01\planroom.dwg

USER NAME = MARINIEJ	DESIGNED - EVAN MARINI	REVISED -
	DRAWN - EVAN MARINI	REVISED -
PLOT SCALE = 3,9430' / mm	CHECKED - RON WOODSHANK	REVISED -
PLOT DATE = 3/29/2019	DATE - 1/22/2019	REVISED -

STATE OF ILLINOIS DEPARTMENT OF TRANSPORTATION

CLASS B PATCHING DETAILS		
SCALE:	SHEET 2 OF 2 SHEETS	STA. TO STA.

F.A.S. RTE.	SECTION	COUNTY	TOTAL SHEETS	SHEET NO.
315	D3 US 52 PP 2020-10	IROQUOIS	8	7
CONTRACT NO. 66K08			ILLINOIS FED. AID PROJECT	



TEMPORARY INFORMATION SIGNING

NOTES:

1. TEMPORARY INFORMATION SIGNS SHALL BE LOCATED OR RELOCATED AS DIRECTED BY THE ENGINEER.
2. USE 6" D BLACK LETTERING ON FLUORESCENT ORANGE BACKGROUND.
3. ERECT SIGNS AT LOCATIONS IN ADVANCE OF THE "ROAD CONSTRUCTION AHEAD" SIGNS AS DIRECTED BY THE ENGINEER.
4. ERECT SIGN ① WITH INSTALLED PANEL ② A MINIMUM OF ONE WEEK PRIOR TO THE START OF THE LANE CLOSURE.
5. REMOVE PANEL ② ON THAT DATE.
6. SEE SPECIAL PROVISION "TEMPORARY INFORMATION SIGNING" FOR ADDITIONAL INFORMATION.
7. WILL BE PAID FOR PER SQ FT AS "TEMPORARY INFORMATION SIGNING". EACH SIGN = 21 SQ FT AND THE DATE PANEL ② WILL NOT BE MEASURED SEPARATELY FOR PAYMENT.

FILE NAME =	USER NAME = MARINIEJ	DESIGNED - EVAN MARINI	REVISED -	STATE OF ILLINOIS DEPARTMENT OF TRANSPORTATION	DETAILS			F.A.S. RTE.	SECTION	COUNTY	TOTAL SHEETS	SHEET NO.
		DRAWN - EVAN MARINI	REVISED -									
		CHECKED - RON WOODSHANK	REVISED -									
		DATE - 1/22/2019	REVISED -			SCALE:	SHEET 1	OF 1	SHEETS	STA.	TO STA.	
								ILLINOIS		FED. AID PROJECT		