

SUMMARY OF QUANTITIES

* SPECIALTY ITEM

SI	CODE NUMBER	ITEM	UNIT	TOTAL QUANTITY	CONSTRUCTION CODE	
					80% FEDERAL 20% LOCAL	0021 URBAN
	67100100	MOBILIZATION	L SUM	1		1
	70102635	TRAFFIC CONTROL AND PROTECTION, STANDARD 701701	L SUM	1		1
	70102640	TRAFFIC CONTROL AND PROTECTION, STANDARD 701801	L SUM	1		1
*	72000100	SIGN PANEL - TYPE 1	SQ FT	15		15
*	72800100	TELESCOPING STEEL SIGN SUPPORT	FOOT	10		10
	72900100	METAL POST - TYPE A	FOOT	30		30
*	78000650	THERMOPLASTIC PAVEMENT MARKING - LINE 24"	FOOT	25		25
*	78009000	MODIFIED URETHANE PAVEMENT MARKING - LETTERS AND SYMBOLS	SQ FT	73		73
*	78009006	MODIFIED URETHANE PAVEMENT MARKING - LINE 6"	FOOT	280		280
*	78009012	MODIFIED URETHANE PAVEMENT MARKING - LINE 12"	FOOT	420		420
*	78009024	MODIFIED URETHANE PAVEMENT MARKING - LINE 24"	FOOT	70		70
*	81028200	UNDERGROUND CONDUIT, GALVANIZED STEEL, 2" DIA.	FOOT	28		28
*	81028240	UNDERGROUND CONDUIT, GALVANIZED STEEL, 4" DIA.	FOOT	182		182
*	85000200	MAINTENANCE OF EXISTING TRAFFIC SIGNAL INSTALLATION	EACH	1		1
*	81400100	HANDHOLE	EACH	1		1
*	85700200	FULL-ACTUATED CONTROLLER AND TYPE IV CABINET	EACH	1		1
*	87300010	GROUNDING EXISTING HANDHOLE FRAME AND COVER	EACH	7		7
*	87301215	ELECTRIC CABLE IN CONDUIT, SIGNAL NO. 14 2C	FOOT	604		604

* SPECIALTY ITEMS

SI	CODE NUMBER	ITEM	UNIT	TOTAL QUANTITY	CONSTRUCTION CODE	
					80% FEDERAL 20% LOCAL	0021 URBAN
*	87301225	ELECTRIC CABLE IN CONDUIT, SIGNAL NO. 14 3C	FOOT	1154		1154
*	87301155	ELECTRIC CABLE IN CONDUIT, SIGNAL NO. 12 7C	FOOT	348		348
*	87301255	ELECTRIC CABLE IN CONDUIT, SIGNAL NO. 14 7C	FOOT	372		372
*	87301900	ELECTRIC CABLE IN CONDUIT, EQUIPMENT GROUNDING CONDUCTOR, NO. 6 1C	FOOT	1363		1363
*	87502500	TRAFFIC SIGNAL POST, GALVANIZED STEEL 16 FT.	EACH	2		2
*	87502520	TRAFFIC SIGNAL POST, GALVANIZED STEEL 18 FT.	EACH	1		1
*	87900200	DRILL EXISTING HANDHOLE	EACH	3		3
*	88030100	SIGNAL HEAD, LED, 1-FACE, 5-SECTION, BRACKET MOUNTED	EACH	2		2
*	88102717	PEDESTRIAN SIGNAL HEAD, LED, 1-FACE, BRACKET MOUNTED WITH COUNTDOWN TIMER	EACH	4		4
*	88600100	DETECTOR LOOP, TYPE I	FOOT	182		182
*	88700200	LIGHT DETECTOR	EACH	2		2
*	88700300	LIGHT DETECTOR AMPLIFIER	EACH	1		1
*	88800100	PEDESTRIAN PUSH-BUTTON	EACH	4		4
*	89502300	REMOVE ELECTRIC CABLE FROM CONDUIT	FOOT	410		410
*	89502375	REMOVE EXISTING TRAFFIC SIGNAL EQUIPMENT	EACH	1		1
*	89502376	REBUILD EXISTING HANDHOLE	EACH	1		1
	Z0013797	STABILIZED CONSTRUCTION ENTRANCE	SQ YD	250		250
	Z0013798	CONSTRUCTION LAYOUT	L SUM	1		1

PLAN	DATE	BY
GRADES CHECKED		
ALL NOTED		
STRUCTURE NOTATIONS CHKD		
NOTE BOOK NO.		

PROFILE	DATE	BY
GRADES CHECKED		
ALL NOTED		
STRUCTURE NOTATIONS CHKD		
NOTE BOOK NO.		

FILE NAME = Buffalo_Creek QUANTITIES-GENERAL NOTES.dwg	USER NAME = chormuth	DESIGNED - BS	REVISED - BS 05-13-2020
PLOT SCALE = 20.00' / IN.	CHECKED - MP	DRAWN - CH	REVISED -
PLOT DATE = May 20, 2020-2:55pm	DATE - 09/12/2019		REVISED -

**STATE OF ILLINOIS
DEPARTMENT OF TRANSPORTATION**

BUFFALO CREEK MULTI-USE TRAIL EXTENSION SUMMARY OF QUANTITIES		F.A.U. RTE.	SECTION	COUNTY	TOTAL SHEETS	SHEET NO.
			19-00212-00-BT	COOK	29	5
SCALE: VERT. N/A SHEET NO. 5 OF 29 SHEETS				CONTRACT NO. 61652		
ILLINOIS FED. AID PROJECT						

SUMMARY OF QUANTITIES

SI	CODE NUMBER	ITEM	UNIT	TOTAL QUANTITY	CONSTRUCTION CODE		SI	CODE NUMBER	ITEM	UNIT	TOTAL QUANTITY	CONSTRUCTION CODE	
					80% FEDERAL	20% LOCAL						80% FEDERAL	20% LOCAL
					0021	URBAN						0021	URBAN
* SPECIALTY ITEMS													
*	Z0033004	LED SIGNAL FACE RETROFIT, GREEN BALL	EACH	2		2							
*	Z0033008	LED SIGNAL FACE RETROFIT, YELLOW BALL	EACH	2		2							
*	K0012950	HERBICIDE SPRAYING	ACRE	0.75		0.75							
1	X0324085	EMERGENCY VEHICLE PRIORITY SYSTEM LINE SENSOR CABLE, NO. 20 3/C	FOOT	522		522							
*	X0324599	ROD AND CLEAN EXISTING CONDUIT	FOOT	1109		1109							
	X0327980	PAVEMENT MARKING REMOVAL - WATER BLASTING	SQ FT	335		335							
	X0800006	PREPARATION OF BASE (SPECIAL)	SQ YD	565		565							
	X1200094	PIPE CULVERTS, SPECIAL	FOOT	64		64							
*	X1400367	PEDESTRIAN SIGNAL POST, 10 FT.	EACH	3		3							
	X2010505	CLEARING, SPECIAL	L SUM	1		1							
	X2020105	GRADING AND SHAPING BIKEWAY	UNIT	5		5							
	X2020410	EARTH EXCAVATION (SPECIAL)	CU YD	91		91							
*	X2500930	SEEDING, CLASS 1B (MODIFIED)	ACRE	0.15		0.15							
*	X2501800	SEEDING, CLASS 4 (MODIFIED)	ACRE	0.25		0.25							
	X4020900	AGGREGATE SURFACE COURSE, TYPE B SPECIAL	SQ YD	500		500							
	X4240800	DETECTABLE WARNINGS (SPECIAL)	SQ FT	74		74							

PLAN

DATE: _____ BY: _____

SCALE: _____

REVISIONS:

NO.	DESCRIPTION

PROFILE

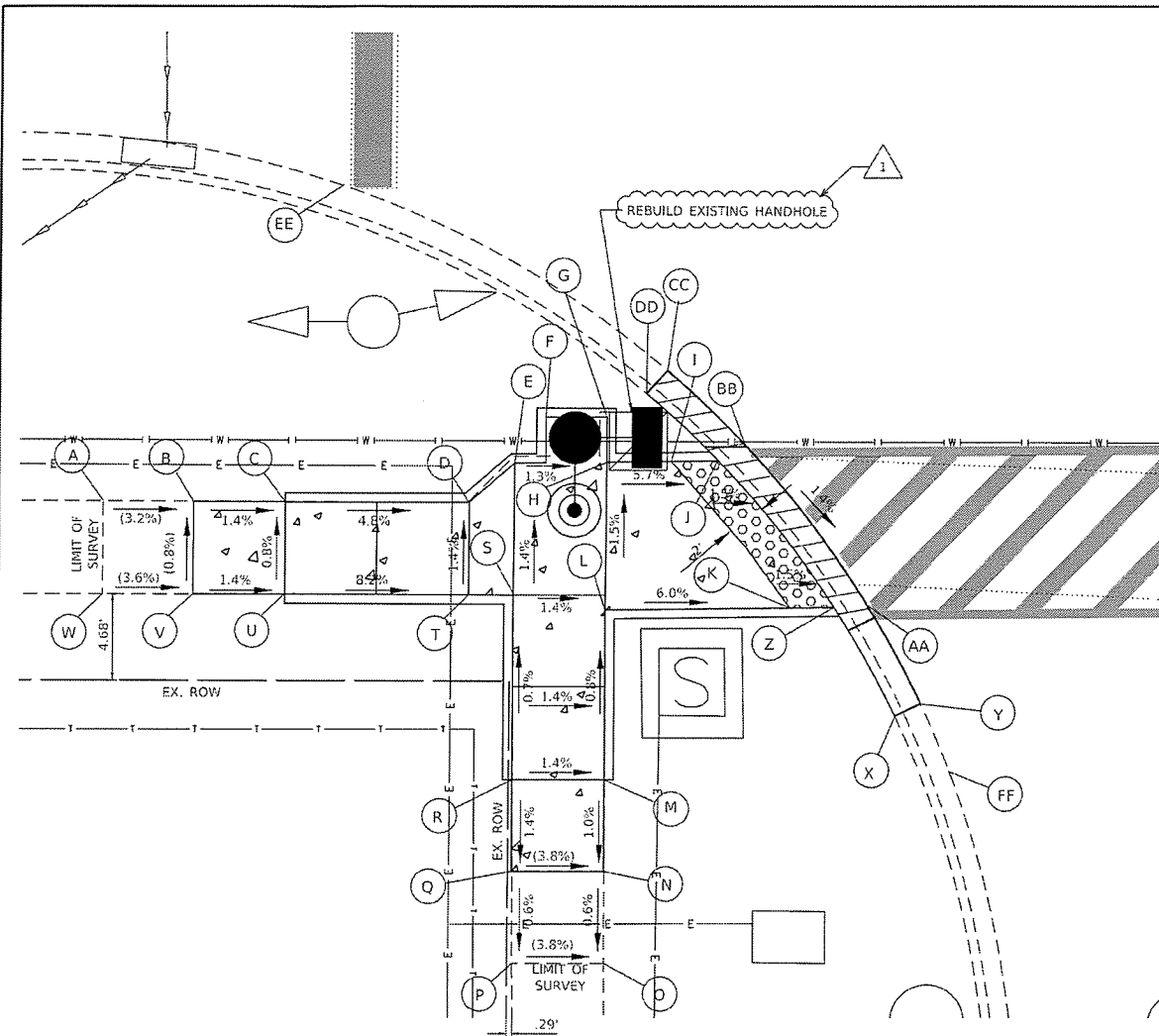
DATE: _____ BY: _____

SCALE: _____

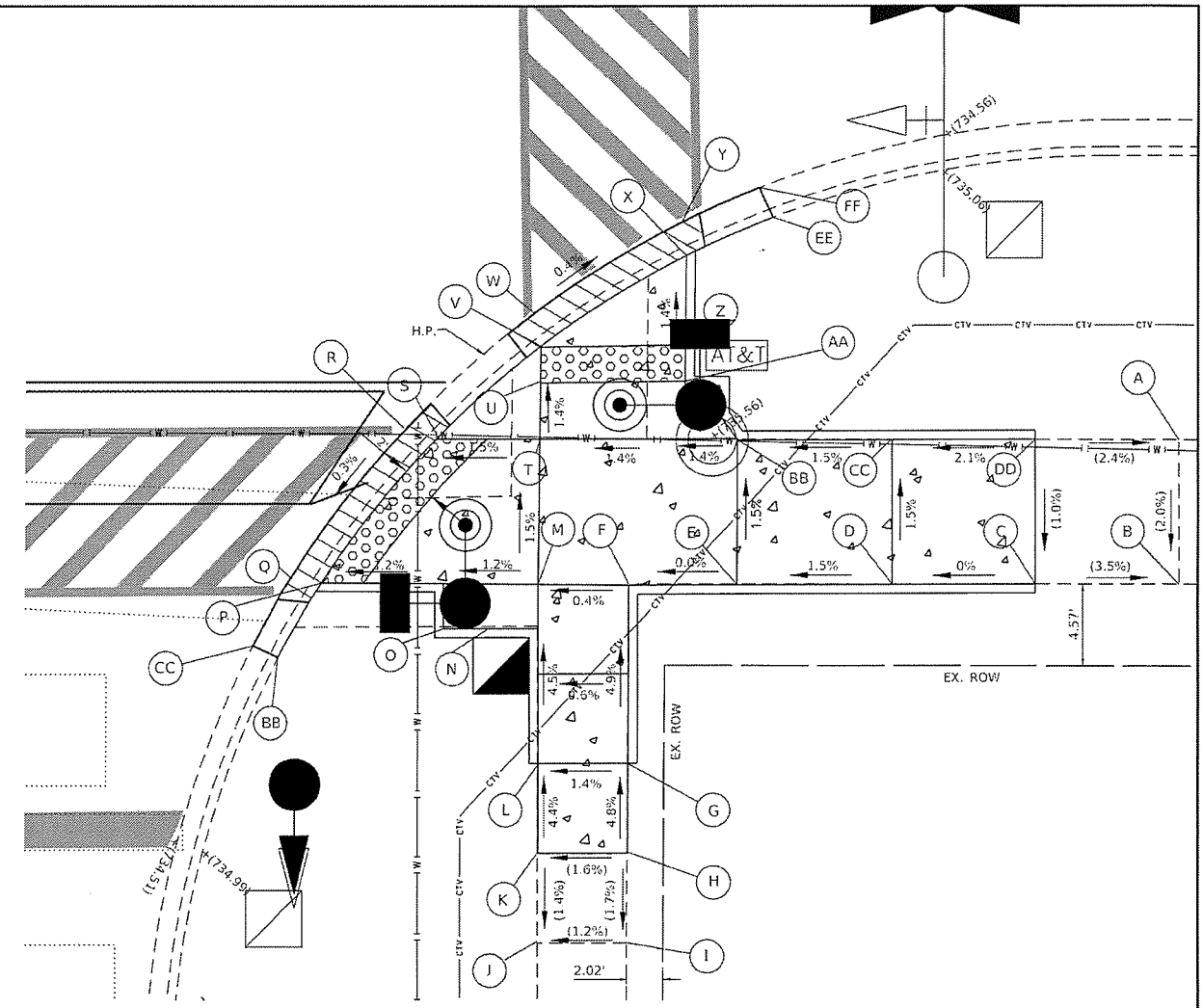
REVISIONS:

NO.	DESCRIPTION

C:\projects\buffalo_creek_multi_use_trail_extension\summary_of_quantities.dwg



SOUTHWEST CORNER WILKE & LAKE COOK ROAD



SOUTHEAST CORNER WILKE & LAKE COOK ROAD

POINT	EXISTING	PROPOSED
A	736.39	736.39
B	736.23	736.23
C	736.07	736.16
D	735.82	735.50
E	735.80	735.28
F	735.88	735.24
G	735.88	735.24
H	735.56	735.21
I	735.63	735.01
J	735.45	734.98
K	735.55	734.85
L	735.65	735.33
M	735.38	735.40
N	735.35	735.35
O	735.32	735.32
P	735.51	735.51
Q	735.54	735.54
R	735.59	735.47
S	735.72	735.40
T	735.86	735.43
U	736.12	736.20
V	736.27	736.27
W	736.45	736.45
X	734.96	734.96
Y	734.49	734.49
Z	734.84	734.82
AA	734.74	734.84
BB	735.00	735.00
CC	735.10	735.10
DD	735.56	735.56
EE	735.70	735.70
FF	734.40	734.86

- NOTES**
- A. ALL PEDESTRIAN PUSH-BUTTON LOCATIONS SHALL MEET ADA/PROWAG REQUIREMENTS.
 - B. COORDINATION BETWEEN ELECTRICAL CONTRACTOR AND SIDEWALK CONTRACTOR IS REQUIRED BEFORE THE SIDEWALK CONSTRUCTION. THE CONTRACTOR SHALL CONTACT CCDOH AT 312-603-1730 BEFORE CONSTRUCTION.
 - C. THE PEDESTRIAN PUSH-BUTTON SHALL BE 36" ABOVE PAVEMENT.
 - D. RESTORATION SHALL BE DONE WITH 4" TOPSOIL, FERTILIZER, AND SOD FOR ALL DISTURBED AREAS WITHIN CCDOH RIGHT-OF-WAY.

SOUTH EAST CORNER

POINT	EXISTING	PROPOSED
A	734.85	734.85
B	734.68	734.68
C	74.96	734.96
D	735.12	734.99
E	735.30	734.86
F	735.58	734.84
G	736.01	735.35
H	735.59	735.59
I	735.50	735.50
J	735.44	735.44
K	735.51	735.51
L	735.28	735.28
M	735.56	734.84
N	735.25	734.80
O	735.15	734.83
P	734.79	734.69
Q	734.71	734.71
R	734.65	734.65
S	735.08	734.63
T	735.11	734.72
U	734.87	734.68
V	735.01	734.65
W	734.67	734.67
X	735.02	734.60
Y	734.62	734.62
Z	735.32	734.67
AA	735.32	734.70
BB	735.57	734.74
CC	735.14	734.87
DD	735.04	735.04

- LEGEND**
- XX.XX' EXISTING LENGTH
 - () EXISTING ELEVATION / SLOPE
 - PROPOSED PEDESTRIAN SIGNAL POST W/ COUNTDOWN
 - SIDEWALK REMOVAL REPLACE W/ TOPSOIL & SOD OR CONCRETE
 - SEEDING / SODDING
 - DEPRESSED CURB & GUTTER
 - VALVE VAULE
 - PROPOSED SIDE CURB
 - PROPOSED 5" SIDEWALK
 - EXISTING SIDEWALK / CURB
 - DETECTABLE WARNINGS
 - U.L. UPPER LANDING
 - L.L. LOWER LANDING
 - C.S. CLEAR GROUND SPACE
 - T.P. TRANSITION PANEL

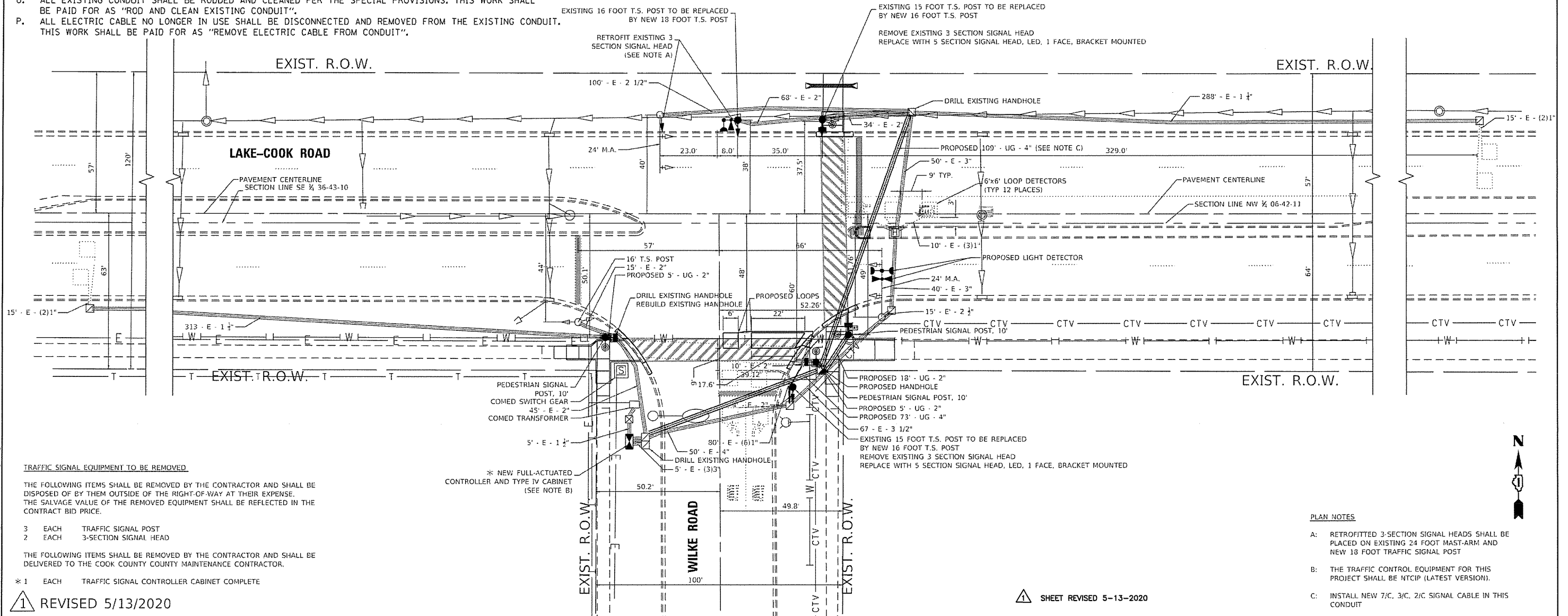


MODEL: Default; T:\blythe advisory commission\CMO\CP-2008A...
 FILE NAME: P:\2020\2020\Buffalo_Creek_Multi-Use_Trail_Extension\2019.dwg

FILE NAME = Buffalo_Creek_Design2019.dwg	USER NAME = nrbrian	DESIGNED -	REVISED - 5/13/2020	COOK COUNTY DEPARTMENT OF TRANSPORTATION & HIGHWAYS	BUFFALO CREEK MULTI-USE TRAIL EXTENSION LAKE COOK ROAD & WILKE ROAD	F.A.U. RTE.	SECTION	COUNTY	TOTAL SHEETS	SHEET NO.
	PLOT SCALE = 5 0000' / in.	DRAWN -	REVISED -			19-00212-00-BT	COOK	29	12	
	PLOT DATE = 5/13/2020	CHECKED -	REVISED -			CONTRACT NO. 61G52				
				SCALE: 1" = 5'	SHEET OF SHEETS	STA. TO STA.	ILLINOIS FED AID PROJECT			

TRAFFIC SIGNAL GENERAL NOTES:

- A. THE CONTRACTOR SHALL INFORM THE CCDOH DESIGN ENGINEER AT (312) 603-1730 PRIOR TO THE START OF ANY WORK ON THE CONTRACT. A MINIMUM OF FIVE (5) WORKING DAYS ADVANCE NOTICE IS REQUIRED.
- B. THE CONTRACTOR SHALL MARK LOCATIONS OF LOOPS AND CONTACT THE COUNTY DESIGN ENGINEER AT (312) 603-1730 FOR LOCATION APPROVAL PRIOR TO THE CUTTING OF THE LOOPS. A MINIMUM OF FIVE (5) WORKING DAYS ADVANCE NOTICE IS REQUIRED.
- C. ALL MAST ARM MOUNTED SIGNAL HEADS ARE TO BE ATTACHED 2'-0" FROM THE END OF MAST ARM UNLESS OTHERWISE NOTED.
- D. ALL SIGNAL POSTS SHALL BE SET BACK 4 FEET MINIMUM AND ALL MAST ARM POLES SHALL BE SET BACK 6 FEET MINIMUM FROM THEIR CENTER TO THE BACK OF CURB UNLESS OTHERWISE NOTED. IN NON-CURBED AREAS THE MAST ARM POLE AND THE SIGNAL POST SHALL BE LOCATED A MINIMUM OF 10 FEET BEHIND THE EDGE OF PAVEMENT OR 2 FEET BEHIND THE EDGE OF THE SHOULDER, WHICHEVER DISTANCE IS GREATER.
- E. THE EXACT LOCATIONS OF ALL UTILITIES SHALL BE FIELD VERIFIED BY THE CONTRACTOR BEFORE THE INSTALLATION OF ANY COMPONENTS OF THE TRAFFIC SIGNAL SYSTEM. FOR THE LOCATIONS OF THE UTILITIES, CALL JULIE TOLL FREE AT 1-800-892-0123.
- F. ALL ELECTRICAL CABLE SHALL HAVE A POLYVINYL CHLORIDE JACKET.
- G. ALL PEDESTRIAN PUSH-BUTTON LOCATIONS SHALL FOLLOW THE GUIDELINES FROM ADA/PROWAG.
- H. THE LOCATION OF THE PEDESTRIAN PUSHBUTTON MUST BE PARALLEL TO THE CROSSWALK.
- I. COORDINATION BETWEEN THE ELECTRICAL CONTRACTOR AND SIDEWALK CONTRACTOR IS REQUIRED BEFORE THE SIDEWALK CONSTRUCTION. THE CONTRACTOR SHALL CONTACT CCDOH AT 312-603-1730.
- J. IF PEDESTRIAN PUSH BUTTONS ARE CHANGED DUE TO ADA/PROWAG REQUIREMENTS, THE EXISTING HOLES IN THE POST AND/OR MAST ARM POLE SHALL BE PLUGGED.
- K. A PEDESTRIAN PUSHBUTTON EXTENSION MAY BE NEEDED FOR THE ACCESSIBILITY AND CORRECT ALIGNMENT OF PEDESTRIAN PUSHBUTTON. THE EXTENSION SHALL BE INCLUDED IN COST OF THE PAY ITEM "PEDESTRIAN PUSH-BUTTON".
- L. ALL WORK TO CHANGE FROM THE EXISTING SIGNALS TO THE NEW SIGNALS AND MAKE THEM OPERATIONAL SHALL BE COMPLETED ON THE SAME WORKING DAY. CONTRACTOR SHALL MINIMIZE DISRUPTIONS TO TRAFFIC.
- M. EACH DETECTOR LOOP SHALL HAVE ITS OWN 1" COILABLE NON-METALLIC CONDUIT BETWEEN THE EDGE OF PAVEMENT AND THE ADJACENT HANDHOLE AS SHOWN ON THE PLANS AND AS STATED IN THE TRAFFIC SIGNAL SPECIFICATIONS
- N. THE CONTRACTOR SHALL MAKE SURE THAT THE PROPOSED TRAFFIC SIGNAL POSTS ON THE EXISTING CONCRETE FOUNDATIONS BE STRAIGHT UP. SHIMMING IS NOT ACCEPTABLE. THIS SHALL BE INCLUDED IN THE PAY ITEM OF "TRAFFIC SIGNAL POST, GALVANIZED STEEL".
- O. ALL EXISTING CONDUIT SHALL BE RODDED AND CLEANED PER THE SPECIAL PROVISIONS. THIS WORK SHALL BE PAID FOR AS "ROD AND CLEAN EXISTING CONDUIT".
- P. ALL ELECTRIC CABLE NO LONGER IN USE SHALL BE DISCONNECTED AND REMOVED FROM THE EXISTING CONDUIT. THIS WORK SHALL BE PAID FOR AS "REMOVE ELECTRIC CABLE FROM CONDUIT".



TRAFFIC SIGNAL EQUIPMENT TO BE REMOVED

THE FOLLOWING ITEMS SHALL BE REMOVED BY THE CONTRACTOR AND SHALL BE DISPOSED OF BY THEM OUTSIDE OF THE RIGHT-OF-WAY AT THEIR EXPENSE. THE SALVAGE VALUE OF THE REMOVED EQUIPMENT SHALL BE REFLECTED IN THE CONTRACT BID PRICE.

- 3 EACH TRAFFIC SIGNAL POST
 - 2 EACH 3-SECTION SIGNAL HEAD
- THE FOLLOWING ITEMS SHALL BE REMOVED BY THE CONTRACTOR AND SHALL BE DELIVERED TO THE COOK COUNTY COUNTY MAINTENANCE CONTRACTOR.
- * 1 EACH TRAFFIC SIGNAL CONTROLLER CABINET COMPLETE

REVISOR: 5/13/2020

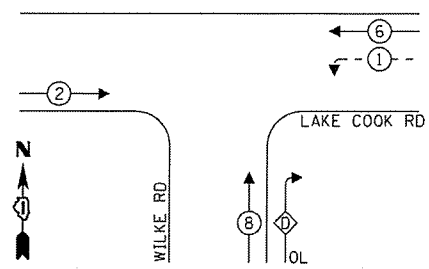
FILE NAME = Buffalo_Creek_Design2019.dwg	USER NAME = rsholan	DESIGNED -	REVISED - 5/13/2020	COOK COUNTY DEPARTMENT OF TRANSPORTATION & HIGHWAYS	BUFFALO CREEK MULTI-USE TRAIL EXTENSION COOK COUNTY TRAFFIC SIGNAL IMPROVEMENTS	F.A.U. RTE.	SECTION	COUNTY	TOTAL SHEETS	SHEET NO.
PLOT SCALE = 20:0000 1/4" = 1'	CHECKED -	REVISED -	19-00212-00-BT			COOK	29	14		
PLOT DATE = 5/13/2020	DATE -	REVISED -	CONTRACT NO. 61652							
SCALE: 1" = 20'						SHEET OF SHEETS		STA. TO STA.		ILLINOIS FED. AID PROJECT

SHEET REVISED 5-13-2020

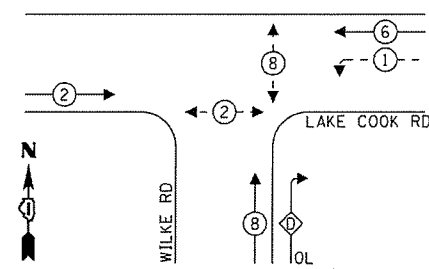


MODEL: D:\Inet\T\Bicycle delivery commission\CMG\PC-2000\FILE NAME: P2102020077\cctm\plus_202005_08\sheet20077c-tr-signal.dgn
 MODEL: D:\Inet\T\Bicycle delivery commission\CMG\PC-2000\FILE NAME: P2102020077\cctm\plus_202005_08\sheet20077c-tr-signal.dgn

EXISTING CONTROLLER SEQUENCE



PROPOSED CONTROLLER SEQUENCE



LEGEND:

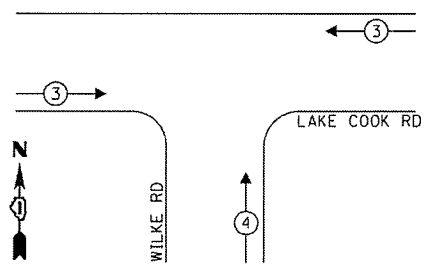
- ← (1) ← PROTECTED PHASE
- ← (1) ← (2) ← PROTECTED/PERMITTED PHASE
- ← (1) ← (2) ← (3) ← PEDESTRIAN PHASE
- ← (1) ← (2) ← (3) ← OL OVERLAP

RIGHT TURN OVERLAP

PHASE DESIGNATION:

OVERLAP LETTER	PERMISSIVE PHASE	PROTECTED PHASE
D	= 8	+ 1

PROPOSED EMERGENCY VEHICLE PREEMPTION SEQUENCE



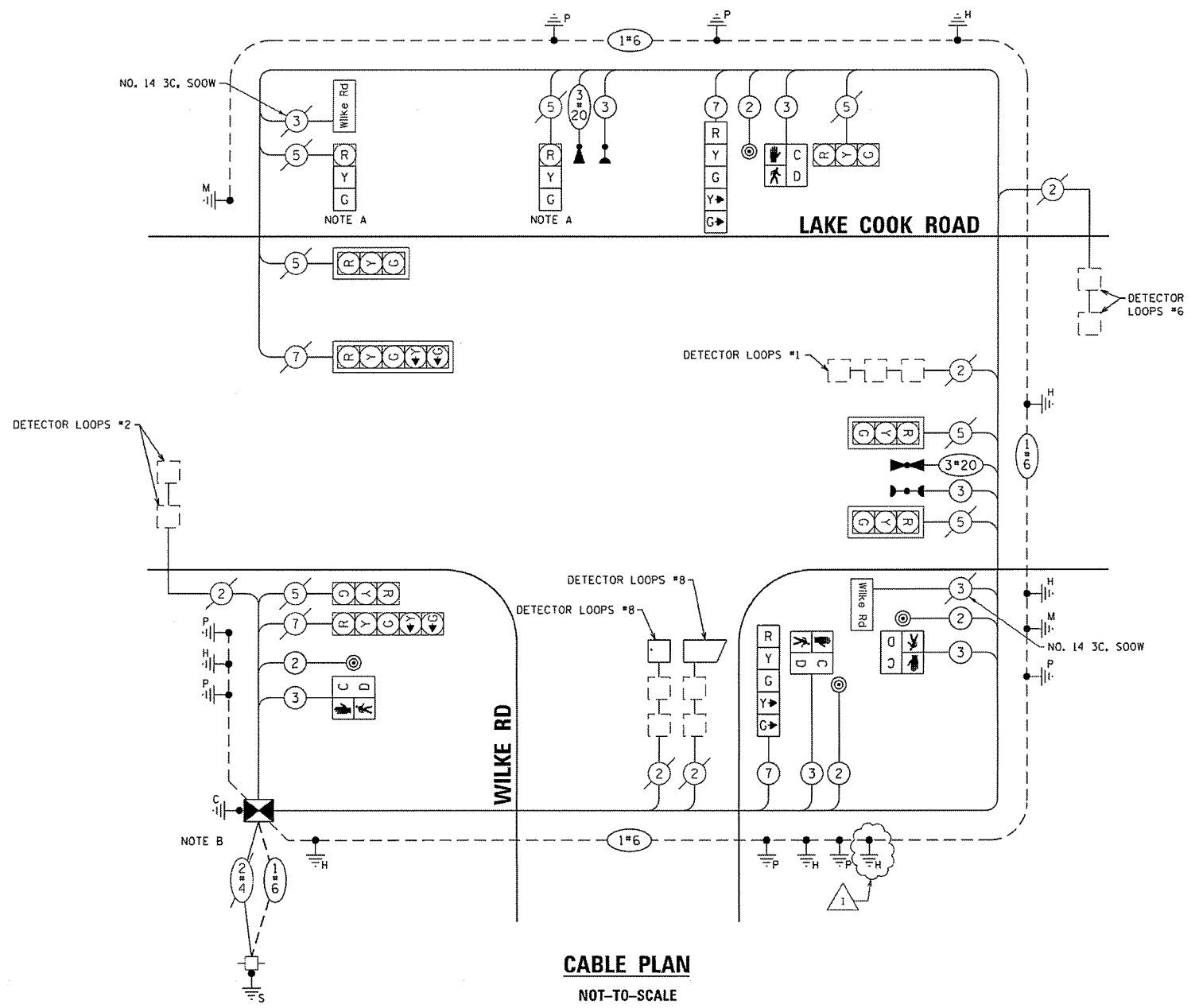
PROPOSED EMERGENCY VEHICLE PREEMPTORS

PROPOSED EMERGENCY VEHICLES PREEMPTORS	3	4
MOVEMENT	←	↑

COOK COUNTY DEPT. OF TRANSPORTATION AND HIGHWAYS TRAFFIC SIGNAL INSTALLATION ELECTRICAL SERVICE REQUIREMENTS				TOTAL WATTAGE
TYPE	NO. OF LAMPS X	WATTAGE	X % OPERATIONS	
SIGNAL (RED)	11	17	0.50	93.50
(YELLOW)	11	25	0.05	13.75
(GREEN)	11	15	0.45	74.25
ARROW	8	12	0.10	9.60
PED. SIGNAL	4	25	1.00	100.00
CONTROLLER	1	100	1.00	100.00
VEHICLE DETECT.	5	5	1.00	25.00
HEATER	1	200	0.40	80.00
LED ILLUMINATED STREET SIGN 6"	2	108	0.40	86.40
TOTAL =				496.10

ENERGY COSTS TO:
 COOK COUNTY BUREAU OF ADMINISTRATION
 118 N. CLARK STREET, ROOM 801
 CHICAGO, IL 60602
 ENERGY COST SHARE
 COOK COUNTY: 67%
 ARLINGTON HEIGHTS: 33%
 TOWER ACCOUNT NO. 1143025228
 SUPPLEMENT NO. NC150357
 VILLAGE OF ARLINGTON HEIGHTS
 33 S. ARLINGTON HEIGHTS ROAD
 ARLINGTON HEIGHTS, ILLINOIS 60005
 ENERGY SUPPLY - CONTACT: COMED
 PHONE: (866) 639-3532
 COMPANY:
 EFFECTIVE DATE:
 TO BE DETERMINED

FOUNDATION (DEPTH)	FT (m)	CABLE SLACK	FT (m)	VERTICAL	FT (m)
TYPE A - POST	4 (1.2)	HANDHOLE	5 (1.5)	ALL FOUNDATIONS	3.9
C - CONTROLLER WIRING	4 (1.2)	POSSIBLE HANDHOLE	13 (4.0)	RAISE ARM (1) POLE	20' ± 1.2 =
D - CONTROLLER	4 (1.2)	SIGNAL POST	2 (1.0)	BRACKET MOUNTED	(EM-L 0.6M) ±
E - M. ARM POLE	1 (0.3)	CONTROLLER CAB.	1 (0.3)	BRACKET MOUNTED	13 (4.0)
30" (750mm)	15 (4.6)	FIBER OPTIC	13 (4.0)	PED. PUSH-BUTTON	5 (1.5)
33" (800 mm)	15 (4.6)	ELECTRIC SERVICE	1 (0.3)	ELECTRIC SERVICE	13.5 (4.1)
42" (1050 mm)	25 (7.6)	GROUND CABLE	1 (0.3)	SERVICE TO GROUND	13.5 (4.1)
				POST MOUNTED	6 (1.8)



CABLE PLAN

NOT-TO-SCALE

PLAN NOTES

A: THE EXISTING 3-SECTION SIGNAL HEAD SHALL BE RETROFITTED BY REMOVING THE YELLOW AND GREEN ARROW SIGNAL INDICATIONS AND REPLACING THEM WITH CIRCULAR SIGNAL LENSES. PAID FOR AS LED SIGNAL FACE RETROFIT, GREEN BALL AND LED SIGNAL FACE RETROFIT, YELLOW BALL

B: THE TRAFFIC SIGNAL CONTROL EQUIPMENT FOR THIS PROJECT SHALL BE NTPIC (LATEST VERSION).

MODEL: D:\Projects\T\N\Project\submittal\commission\COMD\VP-2008\FILE\Drawings\TrafficSignalImprovements_20200520.dwg
 FILE: Buffalo_Creek_Design2019.dwg