

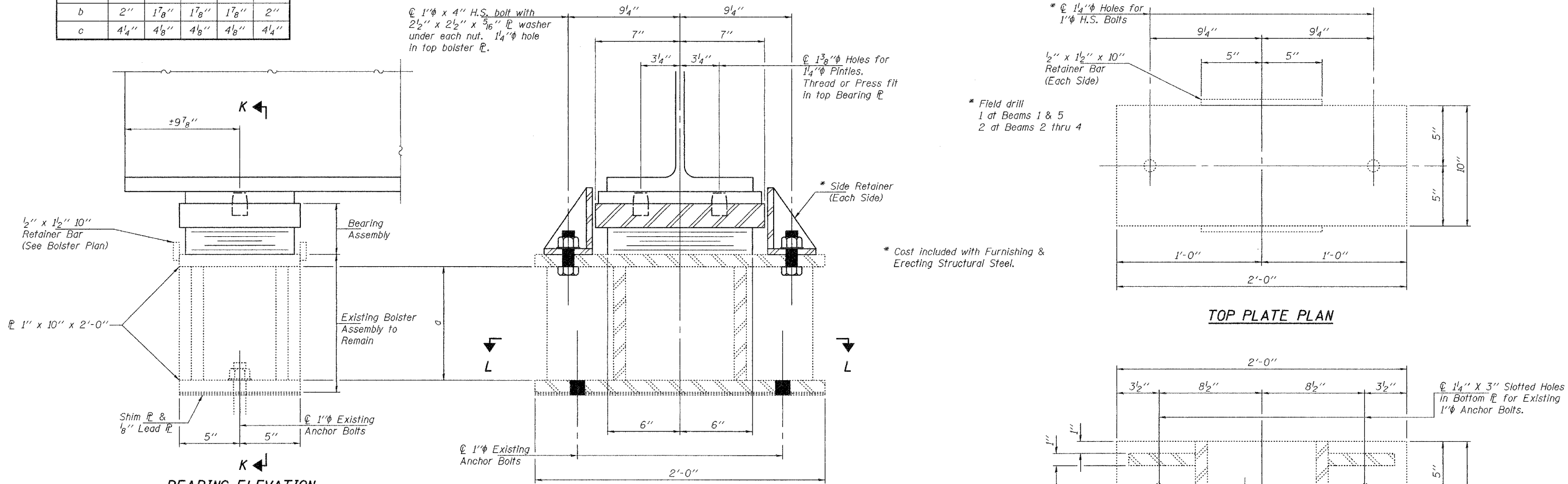
STATE OF ILLINOIS  
DEPARTMENT OF TRANSPORTATION

|                       |          |        |                   |       |             |
|-----------------------|----------|--------|-------------------|-------|-------------|
| ROUTE NO.             | SECTION  | COUNTY | SHEET             | SHEET | SHEET NO. 8 |
| FAI 94                | *        | COOK   | 30                | 11    | 15 SHEETS   |
| FED. ROAD DIST. NO. 7 | ILLINOIS |        | FED. AID PROJECT- |       |             |

Contract Number: 60E12  
\* IIII-700 HB-BR

TABLE OF DIMENSIONS

| Location | BM 1                            | BM 2                             | BM 3                            | BM 4                            | BM 5                            |
|----------|---------------------------------|----------------------------------|---------------------------------|---------------------------------|---------------------------------|
| a        | 8 <sup>3</sup> / <sub>4</sub> " | 8 <sup>3</sup> / <sub>16</sub> " | 9 <sup>5</sup> / <sub>8</sub> " | 9 <sup>1</sup> / <sub>8</sub> " | 9 <sup>3</sup> / <sub>8</sub> " |
| b        | 2"                              | 1 <sup>7</sup> / <sub>8</sub> "  | 1 <sup>7</sup> / <sub>8</sub> " | 1 <sup>7</sup> / <sub>8</sub> " | 2"                              |
| c        | 4 <sup>1</sup> / <sub>4</sub> " | 4 <sup>1</sup> / <sub>8</sub> "  | 4 <sup>1</sup> / <sub>8</sub> " | 4 <sup>1</sup> / <sub>8</sub> " | 4 <sup>1</sup> / <sub>4</sub> " |

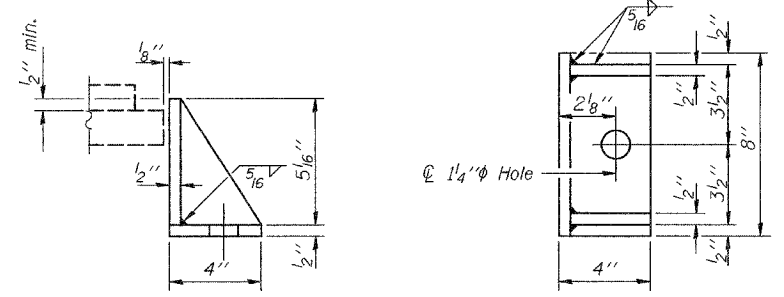


BEARING ELEVATION

SECTION K-K

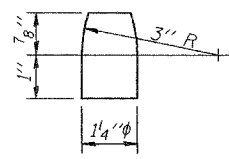
TOP PLATE PLAN

SECTION L-L

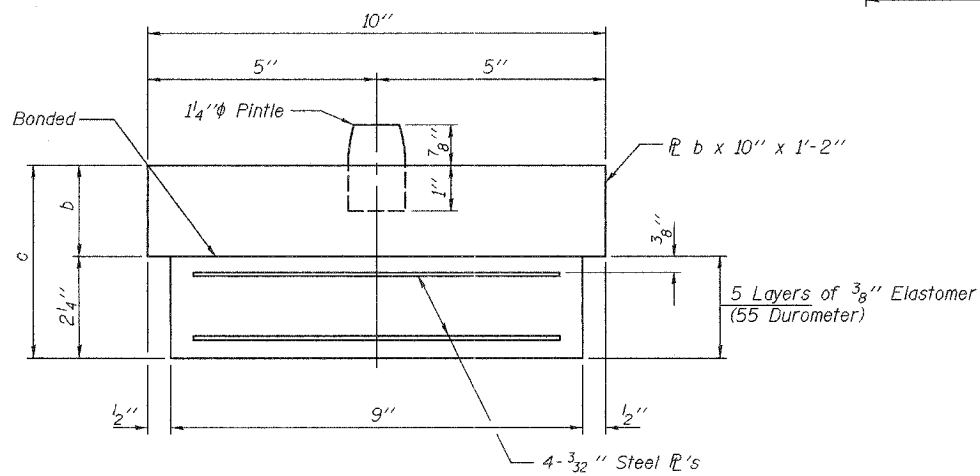


SIDE RETAINER

Equivalent rolled angle with stiffeners will be allowed in lieu of welded plates.



PINTLE



BEARING ASSEMBLY

BILL OF MATERIAL

| Item                                | Unit | Total |
|-------------------------------------|------|-------|
| Elastomeric Bearing Assembly Type I | Each | 5     |

BEARING DETAILS  
115th ST. OVER FAI RT. 94  
COOK COUNTY  
SN 016-2042

|          |         |          |  |
|----------|---------|----------|--|
| DESIGNED | ATH     | EXAMINED | <i>Carl Proyer</i><br>ENGINEER OF STRUCTURAL SERVICES          |
| CHECKED  | VHV     | PASSED   | <i>Ralph E. Anderson</i><br>ENGINEER OF BRIDGES AND STRUCTURES |
| DRAWN    | Steffen |          |  |
| CHECKED  | ATH VHV |          |  |