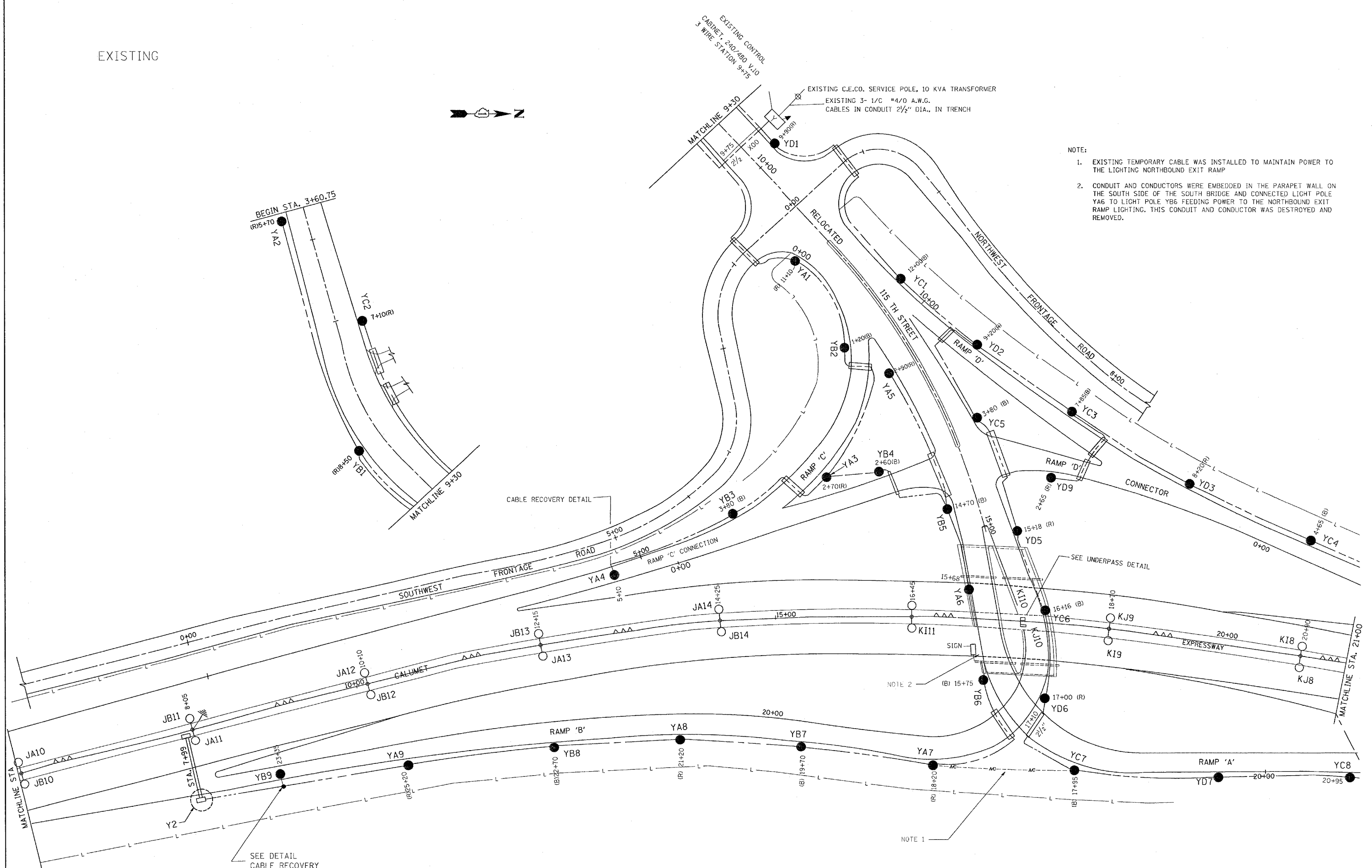


EXISTING



- NOTE:
1. EXISTING TEMPORARY CABLE WAS INSTALLED TO MAINTAIN POWER TO THE LIGHTING NORTHBOUND EXIT RAMP
  2. CONDUIT AND CONDUCTORS WERE EMBEDDED IN THE PARAPET WALL ON THE SOUTH SIDE OF THE SOUTH BRIDGE AND CONNECTED LIGHT POLE YA6 TO LIGHT POLE YB6 FEEDING POWER TO THE NORTHBOUND EXIT RAMP LIGHTING. THIS CONDUIT AND CONDUCTOR WAS DESTROYED AND REMOVED.

FILE NAME =  
 c:\projects\119608\lighting.dgn

USER NAME = pousterma  
 PLOT SCALE = 50.0000' / IN.  
 PLOT DATE = 4/30/2008

DESIGNED -  
 DRAWN -  
 CHECKED -  
 DATE -

REVISED -  
 REVISED -  
 REVISED -  
 REVISED -

**STATE OF ILLINOIS  
 DEPARTMENT OF TRANSPORTATION**

F.A. I-94 (BISHOP FORD EXPRESSWAY) LIGHTING PLAN  
 EXISTING 115TH STREET INTERCHANGE

SCALE: SHEET NO. 2 OF 8 SHEETS STA. TO STA.

F.A.I. RTE.	SECTION	COUNTY	TOTAL SHEETS	SHEET NO.
1584	1111-700-HB-BR	COCK	30	20
FED. ROAD DIST. NO. 1 ILLINOIS FED. AID PROJECT			CONTRACT NO. 60E12	