

**INDEX OF SHEETS**

FOR INDEX OF SHEETS, SEE SHEET NO. 2

PROJECT LOCATED IN VILLAGE OF GURNEE

**DESIGN DESIGNATION**

US 41: MAJOR HIGHWAY EXTENSION

IL 132: PRINCIPAL ARTERIAL

	ADT (2020)	DESIGN SPEED	POSTED SPEED
US 41	48,000 / 57,000	50 MPH / 60 MPH	45 MPH
IL 132	30,000 / 32,000	40 MPH	35 MPH

STATE OF ILLINOIS  
DEPARTMENT OF TRANSPORTATION  
DIVISION OF HIGHWAYS

**PLANS FOR PROPOSED HIGHWAY**

FAP 346 (US ROUTE 41 – SKOKIE HIGHWAY)  
FAU 1218 (ILLINOIS 132 – GRAND AVENUE)

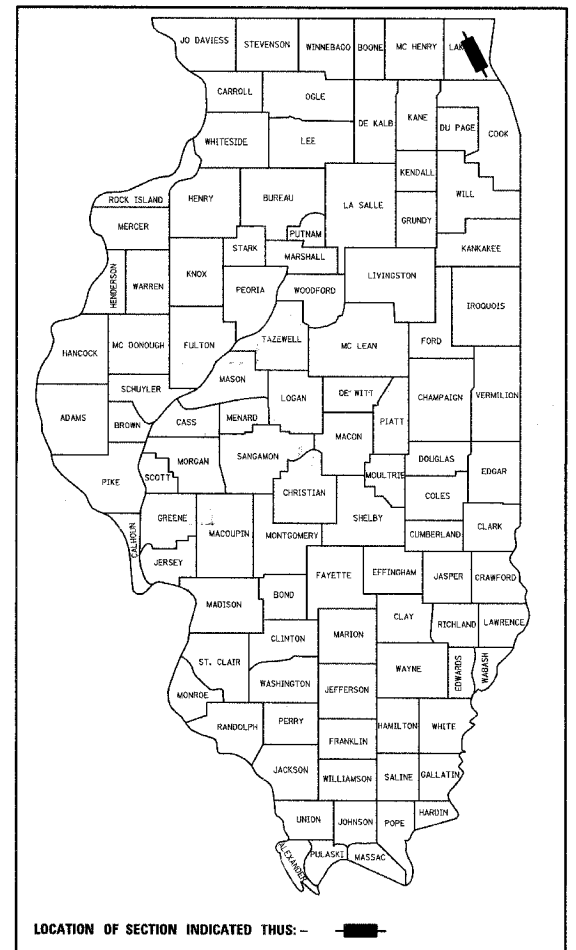
SECTION 125X-HB-1F  
PROJECT: F-0346(013)  
BEAM AND BEARING FABRICATION

LAKE COUNTY

C-91-358-08

F.A.P. RTE.	SECTION	COUNTY	TOTAL SHEETS	SHEET NO.
346		LAKE	23	1

FED. ROAD DIST. NO. ILLINOIS FED. AID PROJECT C-91-358-08 • 125X-HB-1F CONTRACT • 60E33



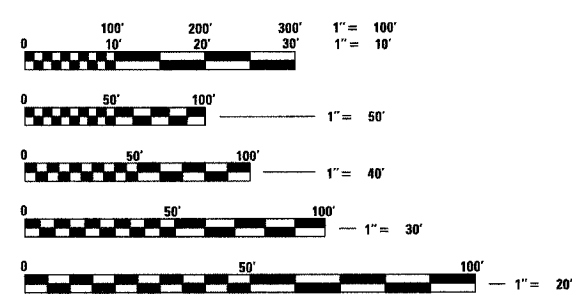
STATE OF ILLINOIS  
DEPARTMENT OF TRANSPORTATION  
DIVISION OF HIGHWAYS

SUBMITTED MARCH 12, 2008

*Diana M. O'Keefe*  
DISTRICT ENGINEER

May 9, 2008  
*Eric E. Harman*  
ENGINEER OF DESIGN AND ENVIRONMENT

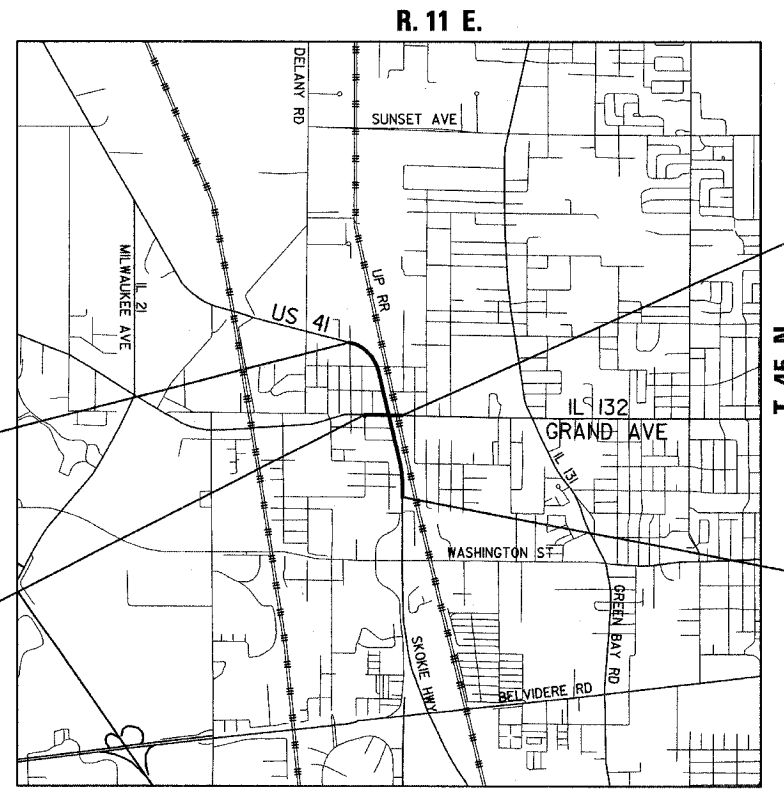
May 9, 2008  
*Christine M. Reed*  
DIRECTOR, DIVISION OF HIGHWAYS



FULL SIZE PLANS HAVE BEEN PREPARED USING STANDARD ENGINEERING SCALES, REDUCED SIZED PLANS WILL NOT CONFORM TO STANDARD SCALES, IN MAKING MEASUREMENTS ON REDUCED PLANS, THE ABOVE SCALES MAY BE USED.

J.U.L.I.E.  
JOINT UTILITY LOCATION INFORMATION FOR EXCAVATION  
1-800-892-0123 OR 811

CONTRACT NO. 60E33



FAP 346 (US 41)  
PROJECT BEGINS  
STA. 509 + 68.98

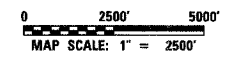
FAU 1218 (IL 132)  
PROJECT LIMIT  
STA. 14 + 71.00

FAU 1218 (IL 132)  
PROJECT LIMIT  
STA. 24 + 76.39

FAP 346 (US 41)  
PROJECT ENDS  
STA. 556 + 81.85

WARREN TOWNSHIP

GROSS LENGTH OF S.N. 049-0209 = 690.0 FT. = 0.131 MI.



Signed *[Signature]*  
Spiros Pantazis, S.E., Il. Lic. No. 081-006448  
Expires 11-30-2008  
Date 3/7/08

**TYLIN INTERNATIONAL**  
PRINTED BY THE AUTHORITY OF THE STATE OF ILLINOIS

DISTRICT ONE DESIGN/CONSULTANT SERVICES PROJECT MANAGER  
RAJENDRA SHAH (847) 705-4555