

STATE OF ILLINOIS
DEPARTMENT OF TRANSPORTATION

ROUTE NO.	SECTION	COUNTY	TOTAL SHEETS	SHEET NO.
346	*	LAKE	23	15
FED. ROAD DIST. NO.		ILLINOIS	FED. AID PROJECT	
125X-HB-1F		CONTRACT # 60E33		

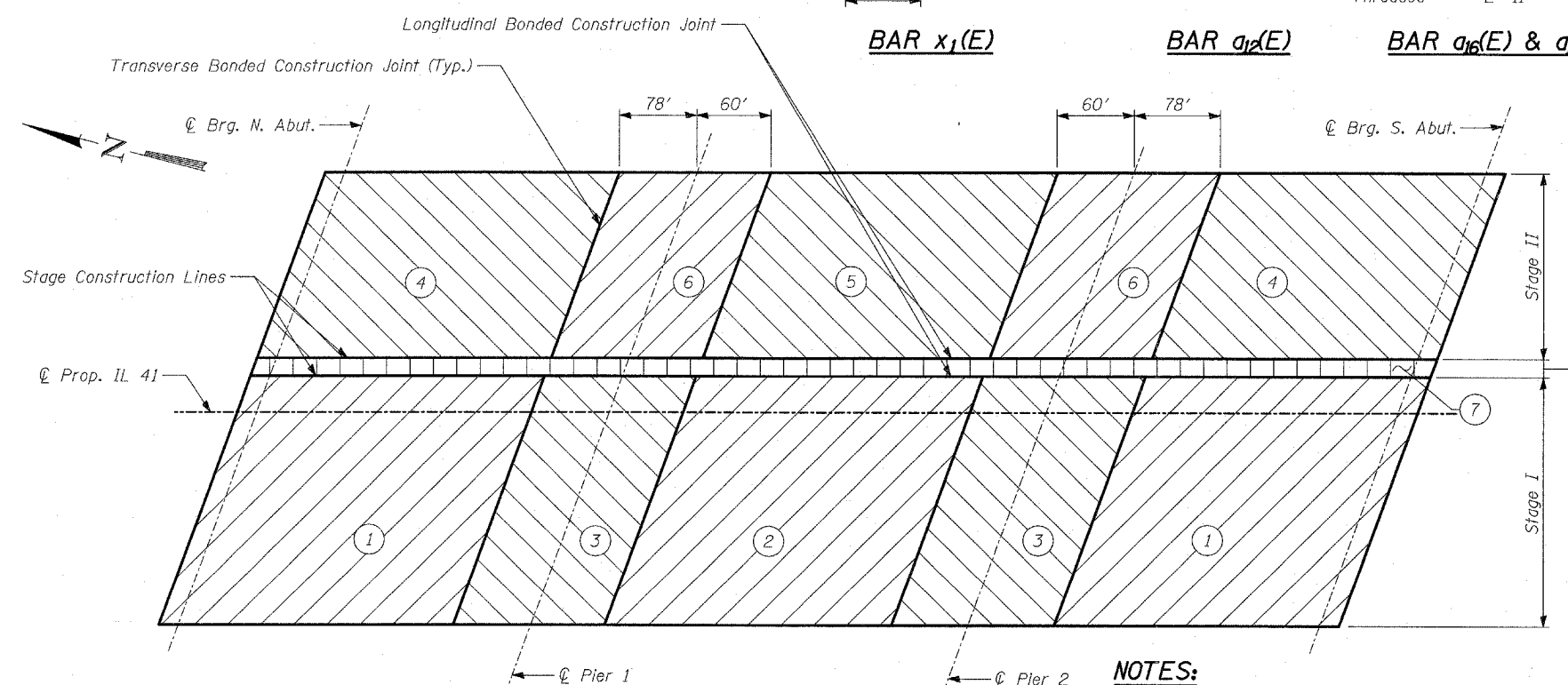
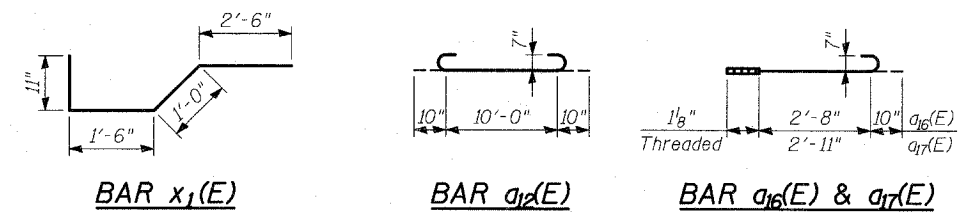
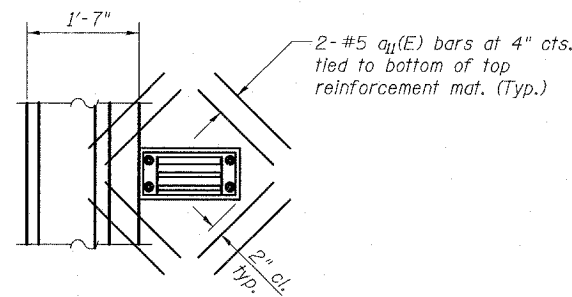
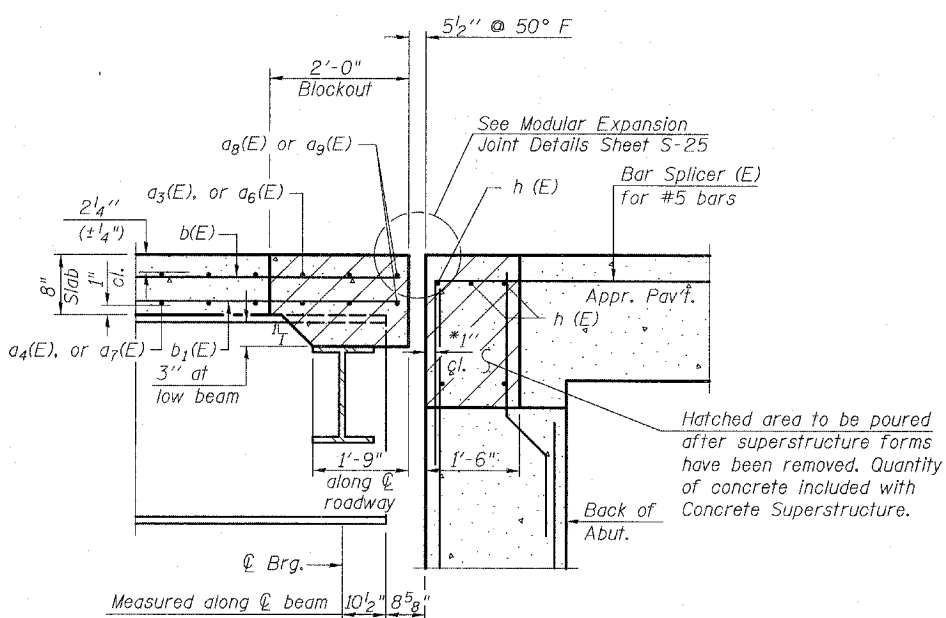
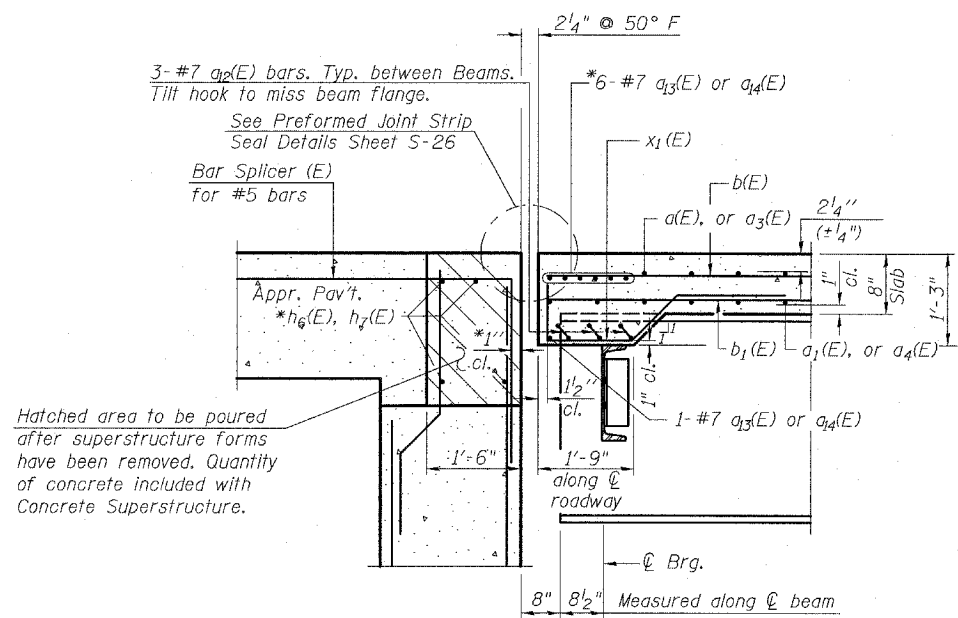
SHEET NO. - S-23
S-66 SHEETS

BILL OF MATERIAL (CONTINUED)

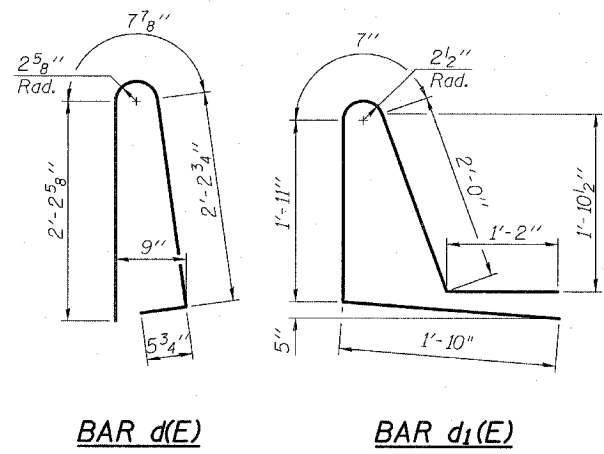
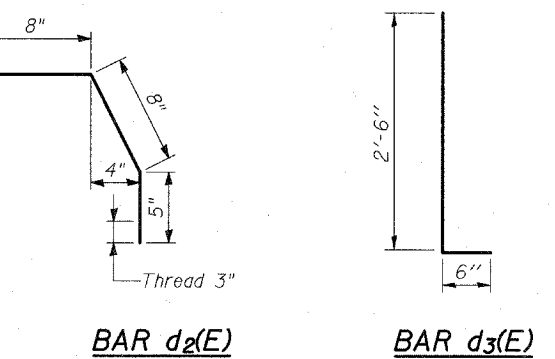
Reinforcement Bars, Epoxy Coated	POUND	525,770
Concrete Superstructure	CU YD	2,025
Bridge Deck Grooving	SQ YD	6,488
Protective Coat	SQ YD	8,143
Bar Splicers	EACH	5,690
Mechanical Splice	EACH	22

BILL OF MATERIAL

Bar	No.	Size	Length	Shape
a(E)	3224	#5	28'-2"	—
a ₁ (E)	3456	#5	19'-5"	—
a ₂ (E)	1660	#6	6'-0"	—
a ₃ (E)	1660	#5	35'-3"	—
a ₄ (E)	1185	#5	34'-11"	—
a ₅ (E)	2845	#5	3'-8"	—
a ₆ (E)	48	#5	54'-3"	—
a ₇ (E)	33	#5	53'-11"	—
a ₈ (E)	4	#5	29'-11"	—
a ₉ (E)	2	#5	37'-6"	—
a ₁₀ (E)	2	#5	3'-11"	—
a ₁₁ (E)	128	#5	1'-6"	—
a ₁₂ (E)	32	#7	11'-8"	U
a ₁₃ (E)	14	#7	30'-7"	—
a ₁₄ (E)	7	#7	37'-7"	—
a ₁₅ (E)	22	#7	3'-10"	—
a ₁₆ (E)	4	#7	3'-6"	U
a ₁₇ (E)	4	#7	3'-9"	U
b(E)	2352	#5	30'-11"	—
b ₁ (E)	2208	#5	32'-2"	—
b ₂ (E)	570	#6	49'-4"	—
d(E)	1514	#5	5'-7"	∩
d ₁ (E)	1514	#5	7'-6"	∩
d ₂ (E)	1514	#5	1'-9"	∩
d ₃ (E)	1514	#5	3'-0"	∩
d ₄ (E)	24	#6	4'-5"	∩
d ₅ (E)	40	#6	8'-11"	∩
e(E)	441	#4	19'-9"	—
e ₁ (E)	26	#4	15'-10"	—
e ₂ (E)	12	#8	19'-9"	—
e ₃ (E)	42	#4	26'-7"	—
e ₄ (E)	42	#8	29'-0"	—
e ₅ (E)	30	#4	27'-6"	—
e ₆ (E)	30	#8	30'-0"	—
x ₁ (E)	95	#5	5'-11"	—



- NOTES:**
- When the deck pour is stopped for the day at one or more of the transverse bonded construction joints in the deck pouring sequence as shown, the next pour shall not be made until both of the following are met:
 - At least 72 hours shall have elapsed from the end of previous pour.
 - The concrete strength shall have attained a minimum flexural strength of 650 psi or a minimum compressive strength of 3500 psi.



THIS SHEET FOR INFORMATION ONLY

SUPERSTRUCTURE DETAILS V

FAP 346 (U.S. ROUTE 41 - SKOKIE HIGHWAY) OVER ILLINOIS ROUTE 132 SECTION 125X-HB-(1&2)R-1 LAKE COUNTY S.N. 049-0209

TYLIN INTERNATIONAL

DESIGNED	- SP
CHECKED	- AD
DRAWN	- MAF
CHECKED	- AD