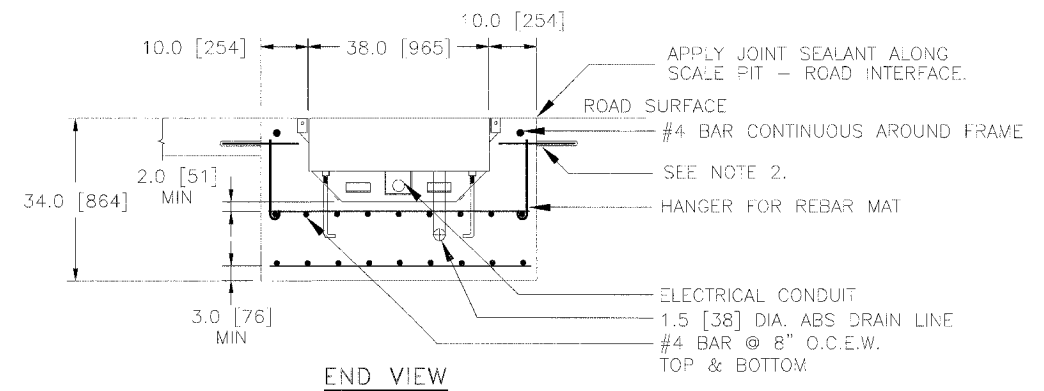
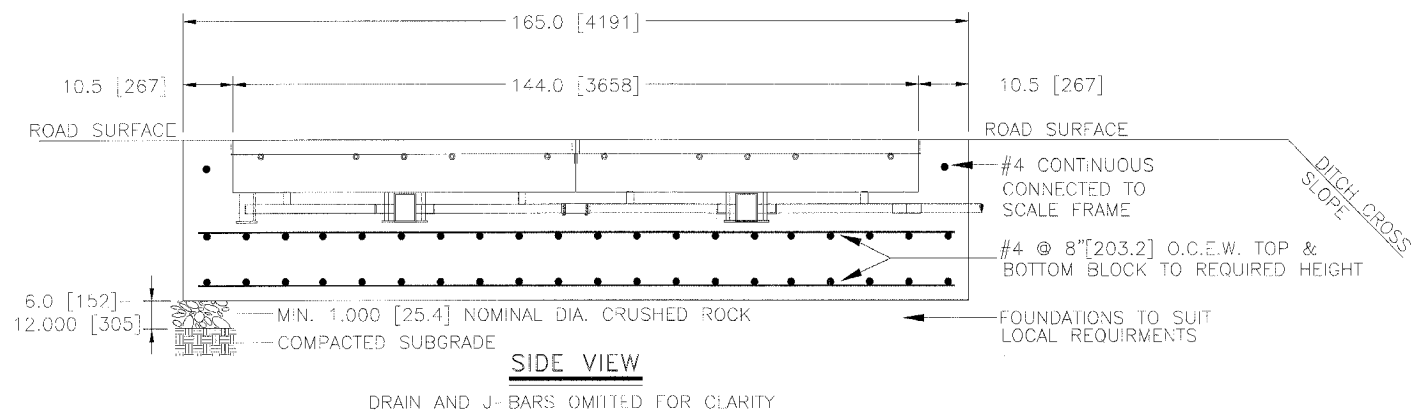
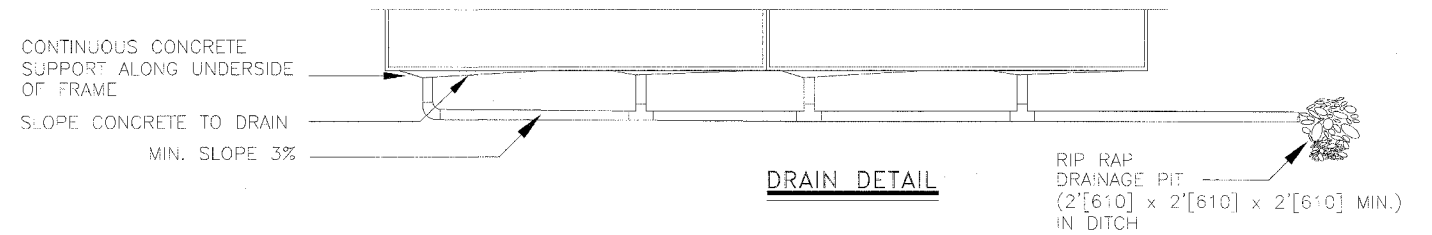


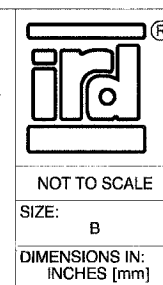
NOTES:

1. REINFORCEMENTS AND DOWELS AS SHOWN ARE MINIMUM REQUIREMENTS AND MAY BE SUPERCEDED BY STATE CONSTRUCTION CODES.
 2. FOR PCC PAVEMENTS INSTALL 1-1/8" [28.5] ϕ x 16" [406] EPOXY COATED DOWELS IN 1-1/4" [19] ϕ x 8" [203] DEEP HOLE @ 16" [406] O.C. SECURE DOWEL INTO HOLE WITH EPOXY. ENSURE DOWELS ARE EXACTLY 90° TO LONGITUDINAL PAVEMENT DIRECTION BOTH VERTICALLY AND HORIZONTALLY.
- SEE 69028801 FOR LIFTING PROCEDURE.



REV.	DESCRIPTION	DWN/DSN	APPR.	APPR.	DATE
1	PRELIMINARY RELEASE	JG/RCz			

CONFIDENTIAL
 THIS DOCUMENT CONTAINS INFORMATION PROPRIETARY TO IRD AND IS THEREFORE NOT TO BE DISCLOSED TO OTHERS OR USED FOR PRODUCTION WITHOUT WRITTEN PERMISSION FROM INTERNATIONAL ROAD DYNAMICS INC.



INTERNATIONAL ROAD DYNAMICS INC.
 SASKATOON SASKATCHEWAN CANADA

DWG. TITLE:
**SITE LAYOUT
 SLC WIM SORTER - WESTBOUND
 ILLINOIS DOT - 1-80 FRANKFORT**

NOT TO SCALE

SIZE: B

DIMENSIONS IN: INCHES [mm]

DWG. No. **MILMLS01** REV.: 1

CAD FILE: MILMLS01.DWG SHEET 6 OF 11