

Benchmark: Survey Monument (Bronze Disk) located on the concrete sidewalk NE side of bridge for the commuter parking lot on Old Willow Road. Sta. 125+91 offset 46 Rt Elev. 598.39

STATE OF ILLINOIS  
DEPARTMENT OF TRANSPORTATION

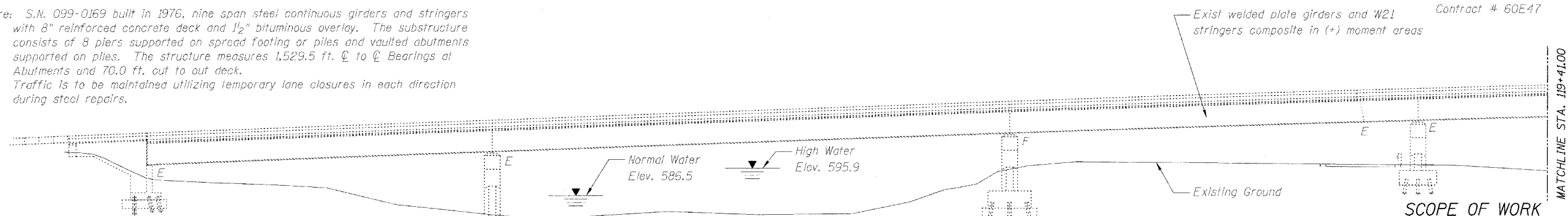
ROUTE NO.	SECTION	COUNTY	TOTAL SHEETS	SHEET NO.
FAU 2697	2008-018 BR	COOK	22	4
FED. ROAD CONST. NO. 7		ILLINOIS	FED. AID PROJECT-	

SHEET NO. S-1  
S-16 SHEETS

Existing Structure: S.N. 099-0169 built in 1976, nine span steel continuous girders and stringers with 8" reinforced concrete deck and 1/2" bituminous overlay. The substructure consists of 8 piers supported on spread footing or piles and vaulted abutments supported on piles. The structure measures 1,529.5 ft. @ to @ Bearings at Abutments and 70.0 ft. out to out deck. Traffic is to be maintained utilizing temporary lane closures in each direction during steel repairs.

Salvage: None

Contract # 60E47



**DESIGN STRESSES**

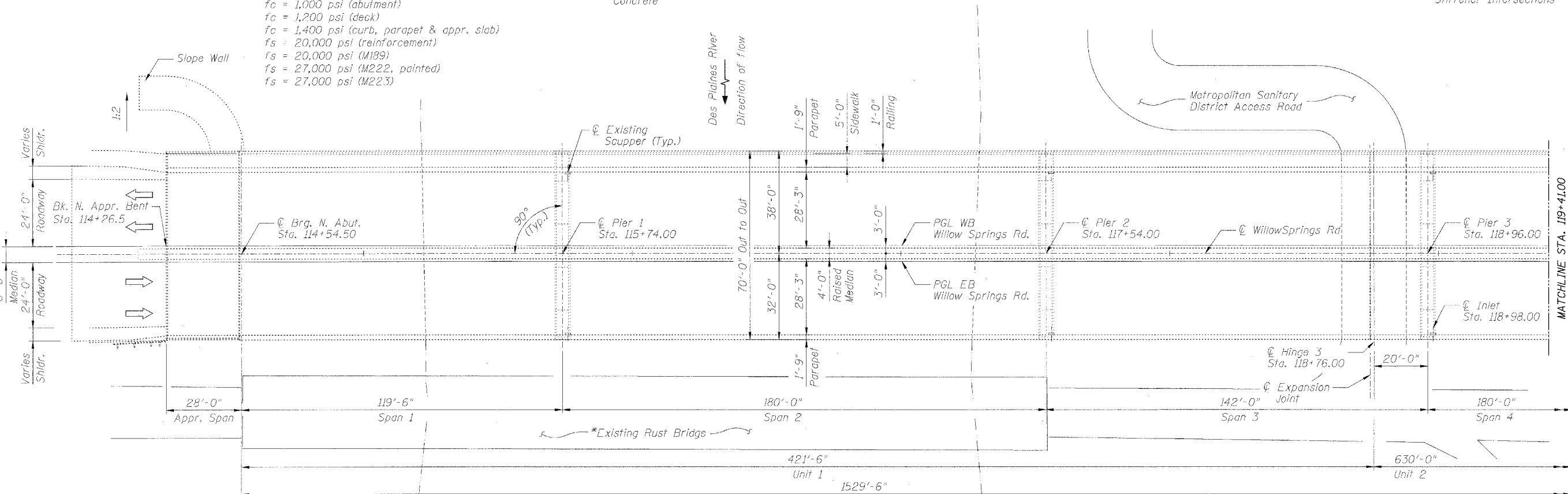
**EXISTING CONSTRUCTION**

- fc = 1,000 psi (abutment)
- fc = 1,200 psi (deck)
- fc = 1,400 psi (curb, parapet & appr. slab)
- fs = 20,000 psi (reinforcement)
- fs = 20,000 psi (M189)
- fs = 27,000 psi (M222, painted)
- fs = 27,000 psi (M223)

**ELEVATION**

**SCOPE OF WORK**

- 1. Repairs to Existing Structural Steel.
  - Cross Frames
  - Lateral Bracing
  - Stiffener Intersections



**PLAN**

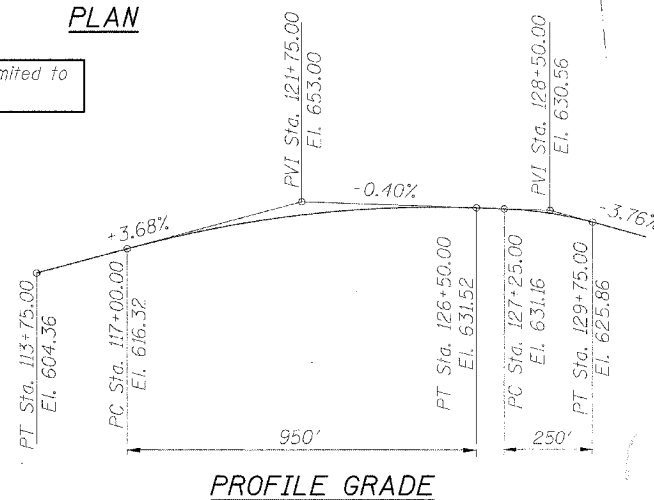
**LOADING HS-20-44**

No future wearing surface allowance

**DESIGN SPECIFICATIONS**

2002 AASHTO Standard Specifications

\*Existing Bridge is limited to 10 ton weight limit



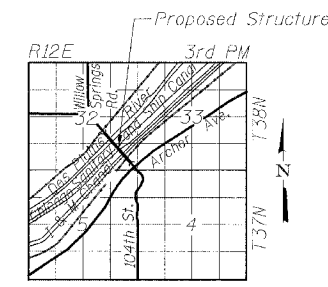
**PROFILE GRADE**

DESIGNED	B. Sauter
CHECKED	E. Mroczek
DRAWN	R. Danley
CHECKED	B. Sauter

**CG Ciorba Group, Inc.**  
CONSULTING ENGINEERS  
5507 North Cumberland Avenue, Suite 402 Chicago, Illinois 60656  
Tel. 773.775.4009 Fax 773.775.4014 Email chicago@ciorba.com



DATE: 4/17/2008  
SEAL EXPIRES: 11/30/2008



**LOCATION SKETCH**

**GENERAL PLAN AND ELEVATION I**  
FAU 2697 WILLOW SPRINGS ROAD  
OVER DES PLAINES RIVER,  
CHICAGO SANITARY & SHIP CANAL,  
ILLINOIS AND MICHIGAN CANAL,  
AND ICG RAILROAD  
COOK COUNTY  
S.N. 016-0540