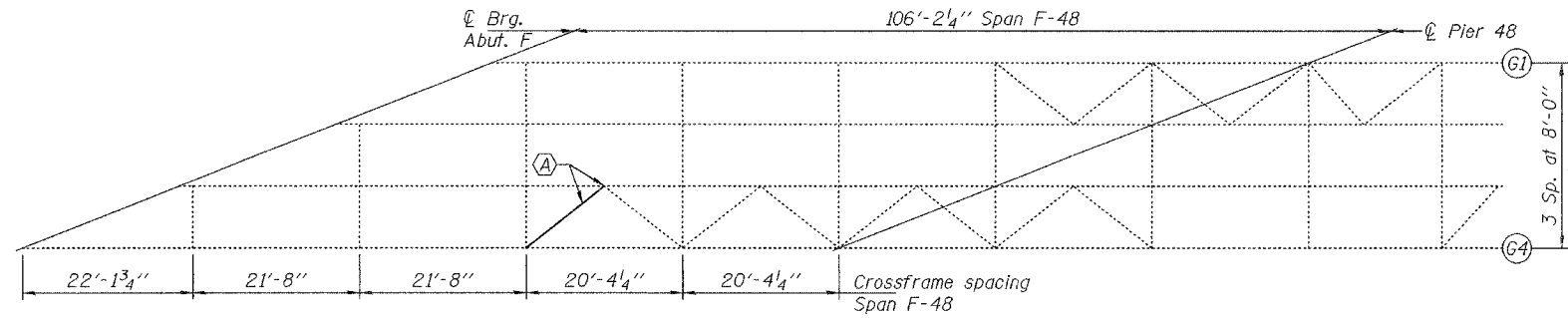


STATE OF ILLINOIS
DEPARTMENT OF TRANSPORTATION

ROUTE NO.	SECTION	COUNTY	POST MILE	SHEET NO.	SHEET NO. 3 3 SHEETS
FAI 55	*	COOK	22	19	
FED. ROAD DIST. NO. 7		ILLINOIS	FED. AID PROJECT		
* 2008-188R		Contract Number: 60E47			

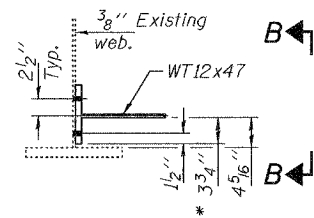
GENERAL NOTES

All structural steel shall conform to AASHTO Classification M-270 Gr. 36, unless otherwise noted.
Fasteners shall be high strength bolts. Bolts $\frac{3}{4}$ " ϕ , open holes $\frac{1}{16}$ " ϕ , unless otherwise noted.
Plan dimensions and details relative to existing plans are subject to routine variations. The Contractor shall field verify existing dimensions and details affecting new construction and make necessary approved adjustments prior to construction or ordering of materials. Such variations shall not be cause for additional compensation for a change in scope of the work, however, the Contractor will be paid for the quantity actually furnished based upon the unit price bid for the work.
Cost of removal and re-installation of all members necessary to complete the work as detailed on the plans and as specified in the Special Provisions shall be included with Structural Steel Repair.
The existing structural steel coating contains lead. The Contractor shall take appropriate precautions to deal with the presence of lead on this project.
All structural steel shall be shop painted with the inorganic zinc rich primer per AASHTO M300, Type 1. Cost included with Structural Steel Repair.
Existing structural steel that will be in contact with new structural steel shall be cleaned and painted prior to erection as required by the Special Provision "Cleaning and Painting Contact Surface Areas of Existing Steel Structures".
The Contractor shall grind all cracked welds parallel to the direction of the existing weld and not perpendicular to the weld.



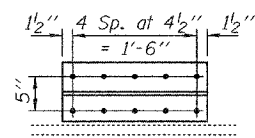
PARTIAL PLAN

(A) - Remove and replace gusset plate & crossframe



SECTION A-A

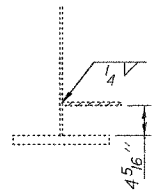
(Crossframe not shown for clarity)



VIEW B-B

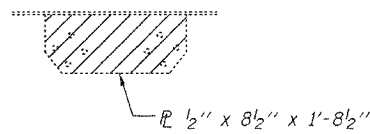
Field drill holes in web using holes in new WT bracket as template.

* Trim bottom leg of WT flange

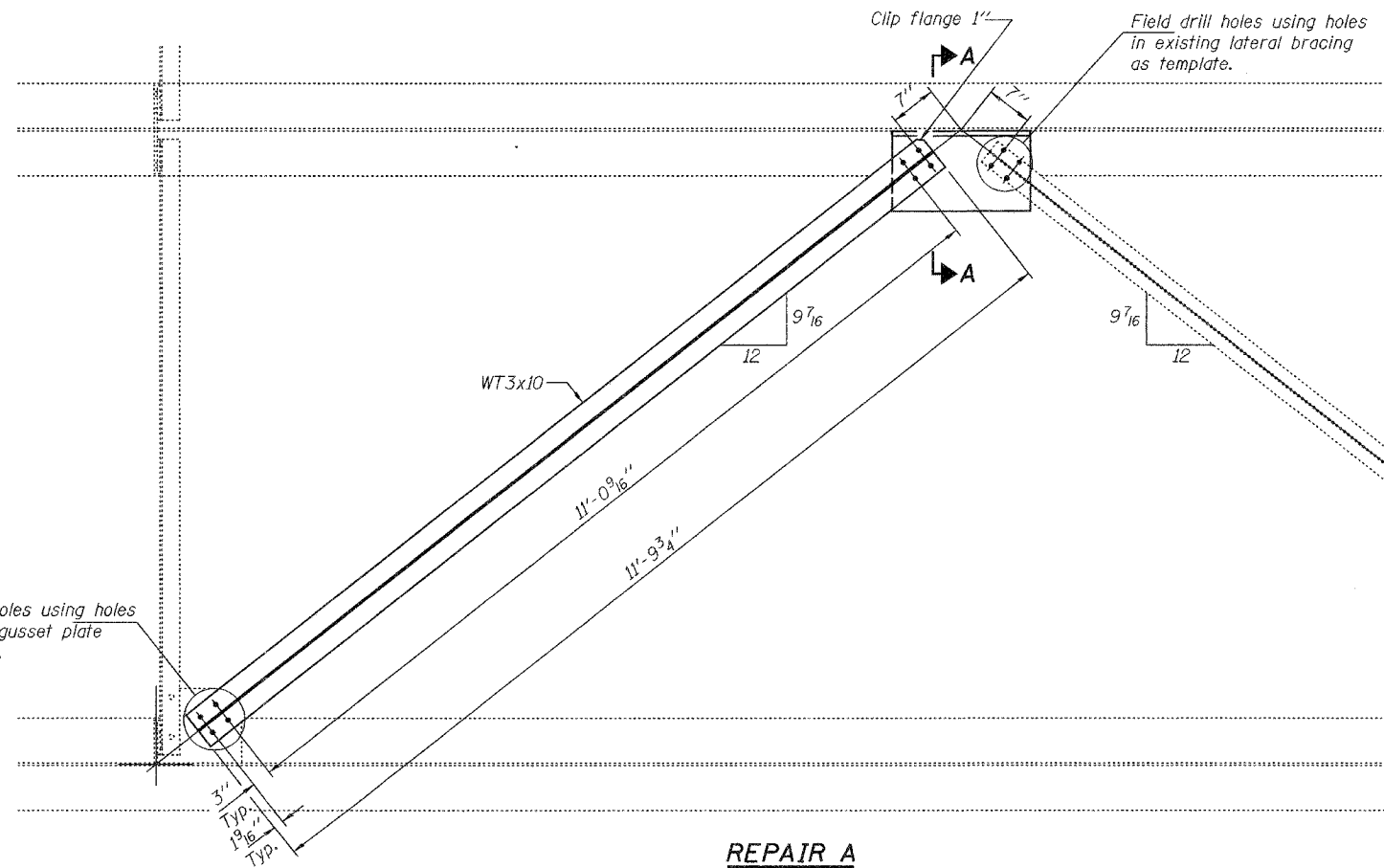


REMOVAL DETAILS

Hatched areas indicate removal



Field drill holes using holes in existing gusset plate as template.



REPAIR A

TOTAL BILL OF MATERIAL

ITEM	UNIT	TOTAL
Structural Steel Repair	Pound	210

BRIDGE REPAIRS
FAI 55 OVER DES PLAINES RIVER
COOK COUNTY
SN 016-0987

DESIGNED	ATH
CHECKED	SJB
DRAWN	ballva
CHECKED	ATH SJB

MAY 7, 2008
EXAMINED *Carl Proyer*
ENGINEER OF STRUCTURAL SERVICES
PASSED *Ralph E. Anderson*
ENGINEER OF BRIDGES AND STRUCTURES