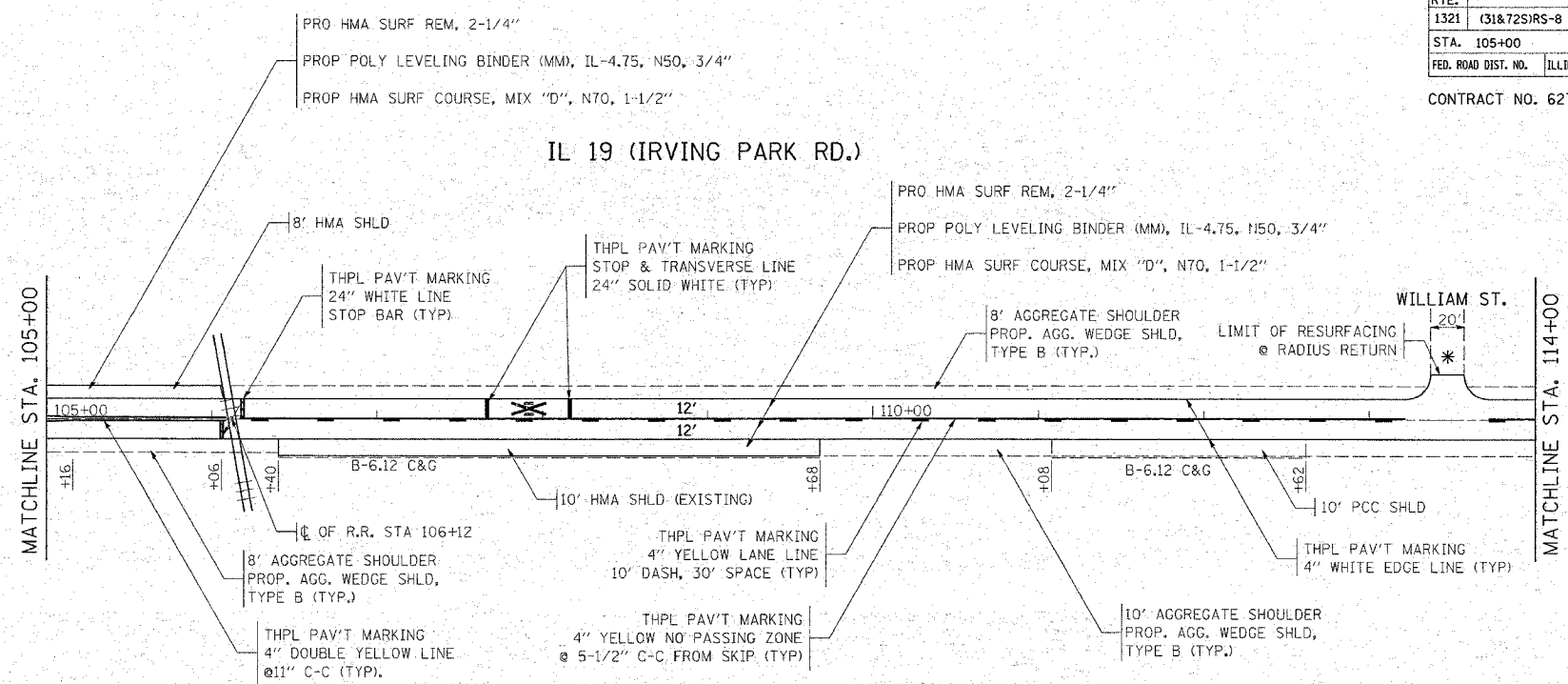
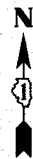
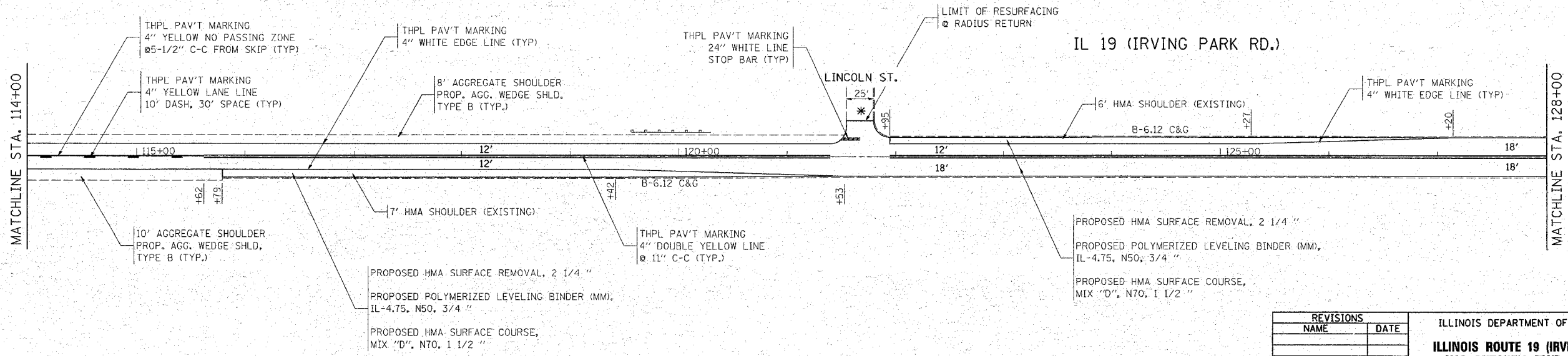


F.A.U. RTE.	SECTION	COUNTY	TOTAL SHEETS	SHEET NO.
1321	(31&72S)RS-8	DUPAGE	37	16
STA. 105+00		TO STA. 128+00		
FED. ROAD DIST. NO.	ILLINOIS	FED. AID PROJECT		

CONTRACT NO. 62703



- SIDESTREETS:
 -RESURFACING LIMITS ARE TO RADIUS RETURNS WITH 4.5' BUTT JOINTS
- PROPOSED HMA SURFACE REMOVAL, 2 1/4"
- PROPOSED POLYMERIZED LEVELING BINDER (MACHINE METHOD), IL-4.75, N50, 3/4"
- PROPOSED POLYMERIZED HMA SURFACE COURSE, MIX "D", N70, 1 1/2"



NOTE:
 FOR RAISED REFLECTIVE PAVEMENT MARKERS, REFER TO TYPICAL APPLICATIONS RAISED REFLECTIVE PAVEMENT MARKERS (SNOW-LOW RESISTANT) AND DISTRICT TYPICAL PAVEMENT MARKINGS

REVISIONS	
NAME	DATE

ILLINOIS DEPARTMENT OF TRANSPORTATION
**ILLINOIS ROUTE 19 (IRVING PARK ROAD)
 W/O MITCHELL BLVD. TO BAKER DR.**
**ROADWAY AND
 PAVEMENT MARKING PLAN**
 SCALE: VERT. 1" = 50'
 HORIZ. 1" = 50'
 DATE _____ DRAWN BY _____
 CHECKED BY _____