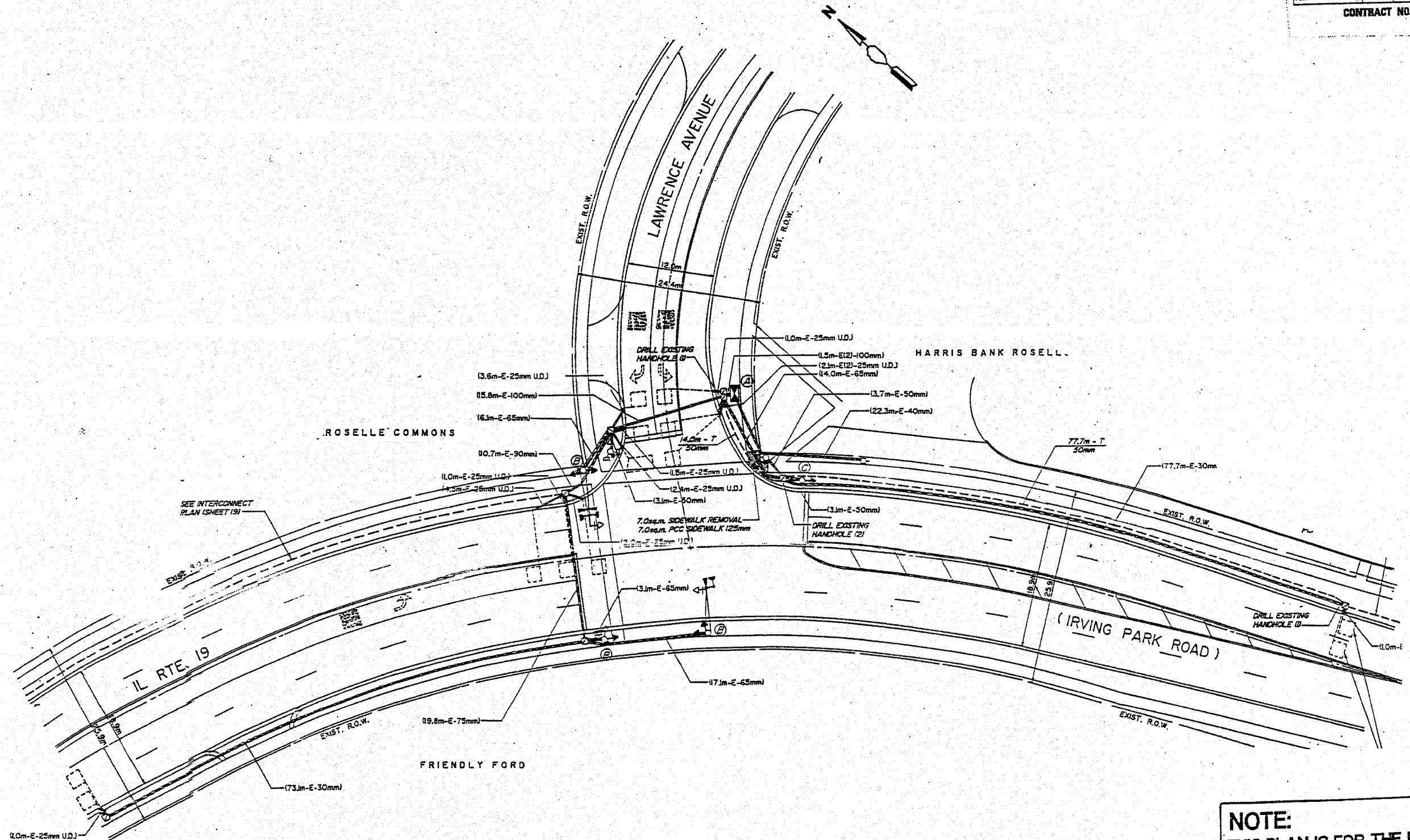


P.A.D. RTE.	SECTION	COUNTY	TOTAL SHEETS	SHEET NO.
1321	CS1&72SRS-8	DUPAGE	37	24
FED. ROAD DIST. NO.		ILLINOIS	FED. AID PROJECT	
CONTRACT NO. 62703				



NOTE:
ALL LOOPS SHOWN ARE WITHIN RESURFACING LIMITS

NOTE:
THIS PLAN IS FOR THE PURPOSE OF REPLACING THE DETECTOR LOOPS, ALL OTHER INFORMATION SHOWN IS NOT RELATED AND WILL BE DISREGARDED.

PLACE ALL DETECTOR LOOPS AS SHOWN				
(WITHIN THE RESURFACING LIMITS)				
CODE NO.	QUANTITY	UNIT	ITEM	
8600600	492'	FOOT	DETECTOR LOOP REPLACEMENT	

SCALE: 1" =
DATE

DESIGNED BY:
DRAWN BY:
CHECKED BY:



ILLINOIS DEPARTMENT OF TRANSPORTATION
DETECTOR LOOPS AT:
**IL RT 19 (IRVING PARK RD)
& LAWRENCE AVENUE**