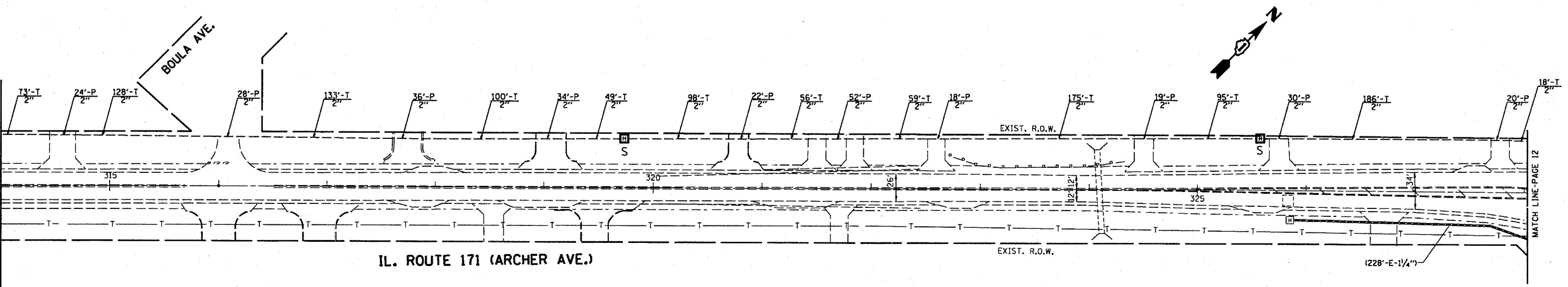
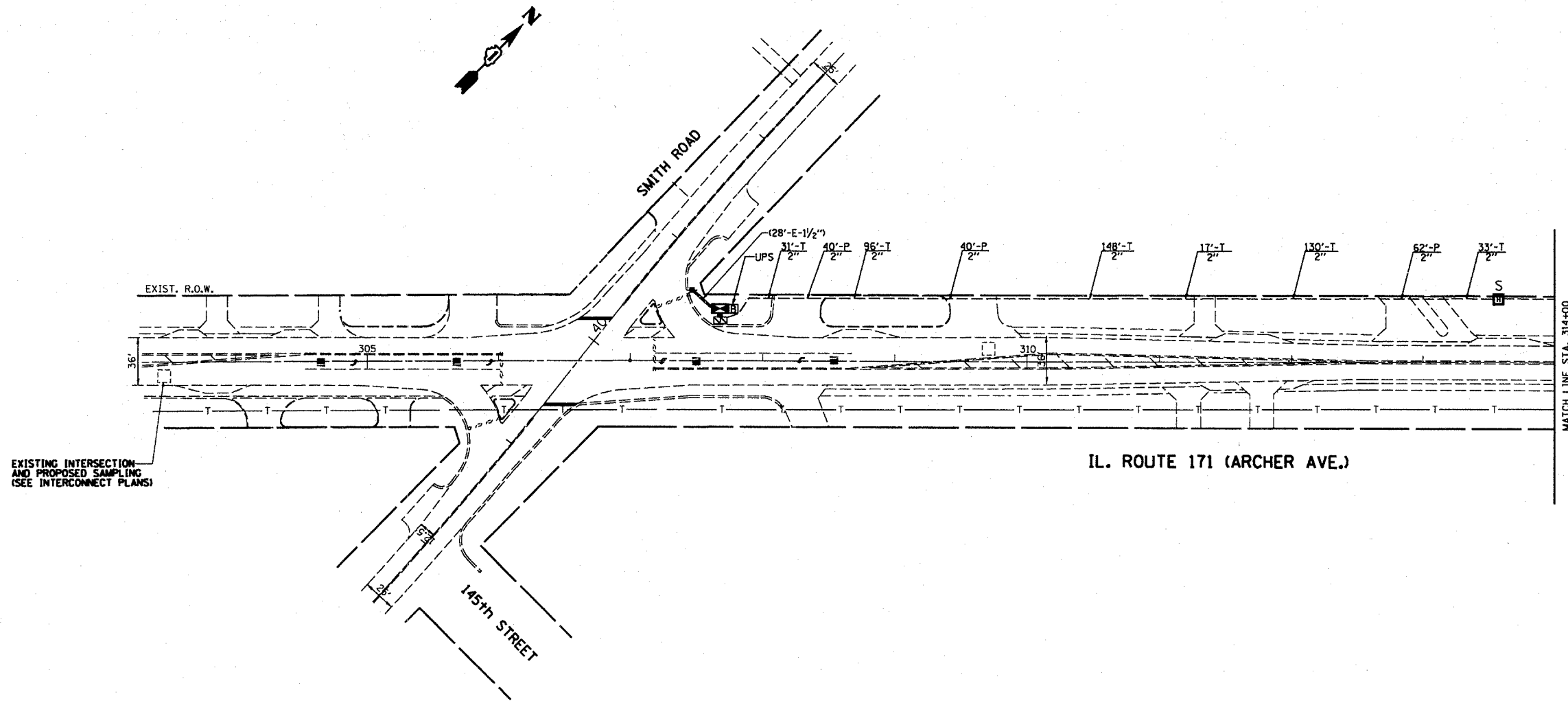


INTERCONNECT PLAN LEGEND

	PROPOSED	EXISTING
CONTROLLER		
HANDHOLE		
DOUBLE HANDHOLE		
HEAVY DUTY HANDHOLE		
G.S. CONDUIT IN TRENCH (T) OR PUSHED (P)		
DETECTOR LOOP		
UNIT DUCT SYSTEM	UD	S
INTERSECTION	IP	I
TELEPHONE CONNECTION		
UN-INTERRUPTIBLE POWER SUPPLY		



FILE NAME = c:\projects\1000404\1000404.dgn	USER NAME = nguyensm	DESIGNED - SN	REVISED -	STATE OF ILLINOIS DEPARTMENT OF TRANSPORTATION	INTERCONNECT PLAN IL. 171 (ARCHER AVE.) FROM 143RD STREET TO SMITH ROAD			F.A.P. RTE. 577	SECTION 2004-019 TS	COUNTY WILL	TOTAL SHEETS 13	SHEET NO. 11
PLOT SCALE = 100.0000' / IN.	CHECKED - DAD	REVISIONS	REVISIONS		SCALE:	SHEET NO. OF SHEETS	STA. TO STA.	CONTRACT NO. 62738				
PLOT DATE = 3/27/2008	DATE - 3-27-2008	REVISIONS	REVISIONS		FED. ROAD DIST. NO. 1 ILLINOIS FED. AID PROJECT							

...projects\1000404\1000404.dgn 3/27/2008 5:22:22 PM User=nguyensm/