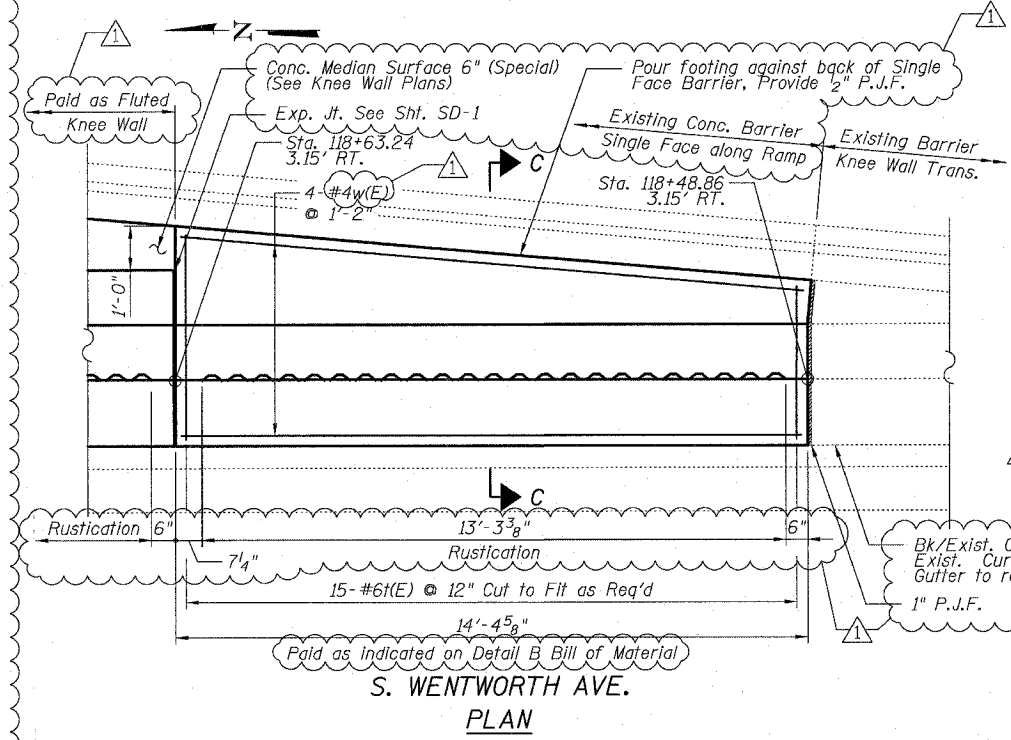
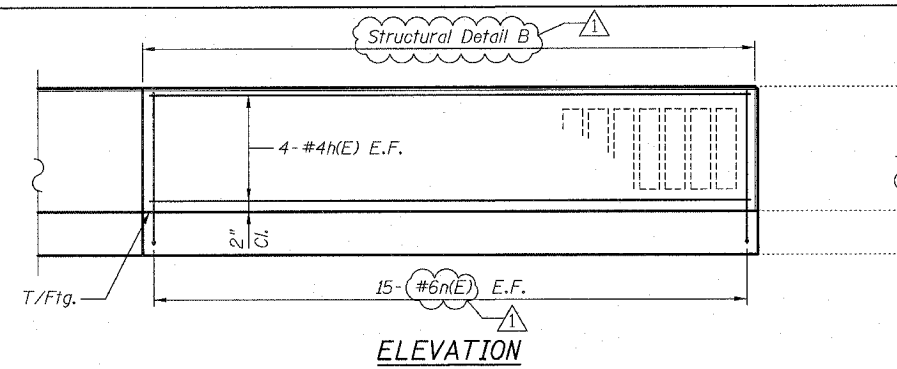


F.A.I.	SECTION	COUNTY	TOTAL SHEETS	SHEET NO.
94/90	*	COOK	38	21
STA.	TO STA.			
FED. ROAD DIST. NO.	ILLINOIS	FED. AID PROJECT		
62998	* (2323.6-2P&2324.6-1P)1-3			

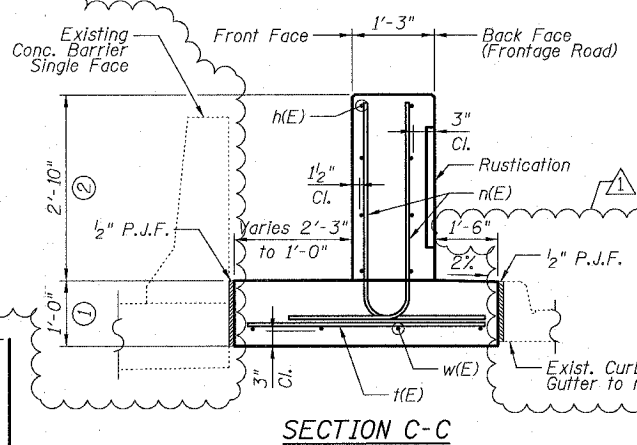


**DETAIL B REINFORCEMENT SCHEDULE AND BILL OF MATERIAL**

Bar	No.	Size	Length	Shape	
n(E)	8	#4	14'-0"		
w(E)	30	#6	5'-6"		
t(E)	15	#6	4'-8"		
w(E)	4	#4	14'-0"		
Item				Unit	Qty.
Concrete Structures				Cu. Yd.	2.4
Concrete Superstructure				Cu. Yd.	1.9
Reinforcement Bars, Epoxy Coated				Pound	470
Rustication Finish				Sq. Ft.	25
Protective Coat				Sq. Yd.	9

**NOTES:**

- All stations and offsets measured from S. Wentworth Ave.  $\perp$ .
- Back Face is face adjacent to Frontage Rd. and Front Face is face adjacent to Expressway.
- Concrete:  $f'c = 3500$  psi
- Provide California Finish on top of foundation between stem and Frontage Road. See Roadway Details.
- At locations where Fluted Knee Wall abuts a rigid structure, a 1" thick Preformed Expansion Joint Filler conforming to the shape of the structure shall be installed between the wall and the structure.
- Apply Protective Coat to top and back face of stem and top of Frontage Road side of foundation.
- For Fluted Knee Wall standard details, see Sheet SD-1
- B.F. = Back Face  
F.F. = Front Face  
E.F. = Each Face



SHEET SD-5

REVISIONS	
NAME	DATE
REVISED	3-6-08
ADDENDUM 1	5-30-08

ILLINOIS DEPARTMENT OF TRANSPORTATION  
 F.A.I. 94/90 (DAN RYAN EXPRESSWAY)  
 SOUTHBOUND KNEE WALLS (PERSHING RD TO 35TH ST)

**DETAIL B**

SCALE: N.T.S. DRAWN BY: LAM  
 DATE: 03/06/08 CHECKED BY: BLU

BOWMAN, BARRETT & ASSOCIATES INC.  
 CONSULTING ENGINEERS  
 Chicago, Illinois  
 312.228.0100  
 www.bbandinc.com

6/29/08 5:20 PM

6/29/08 5:20 PM