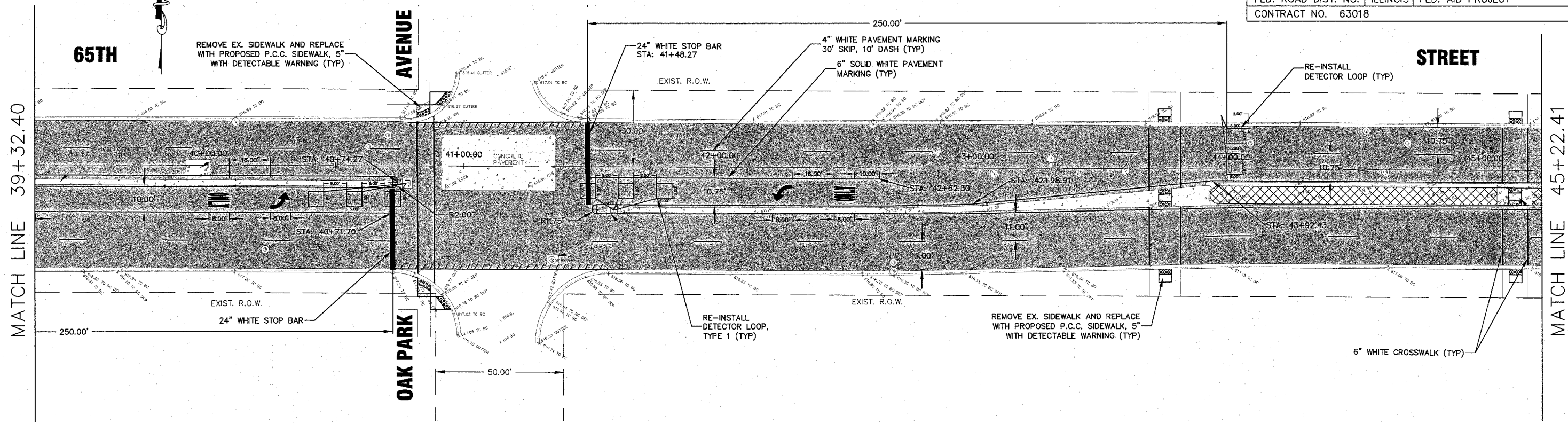


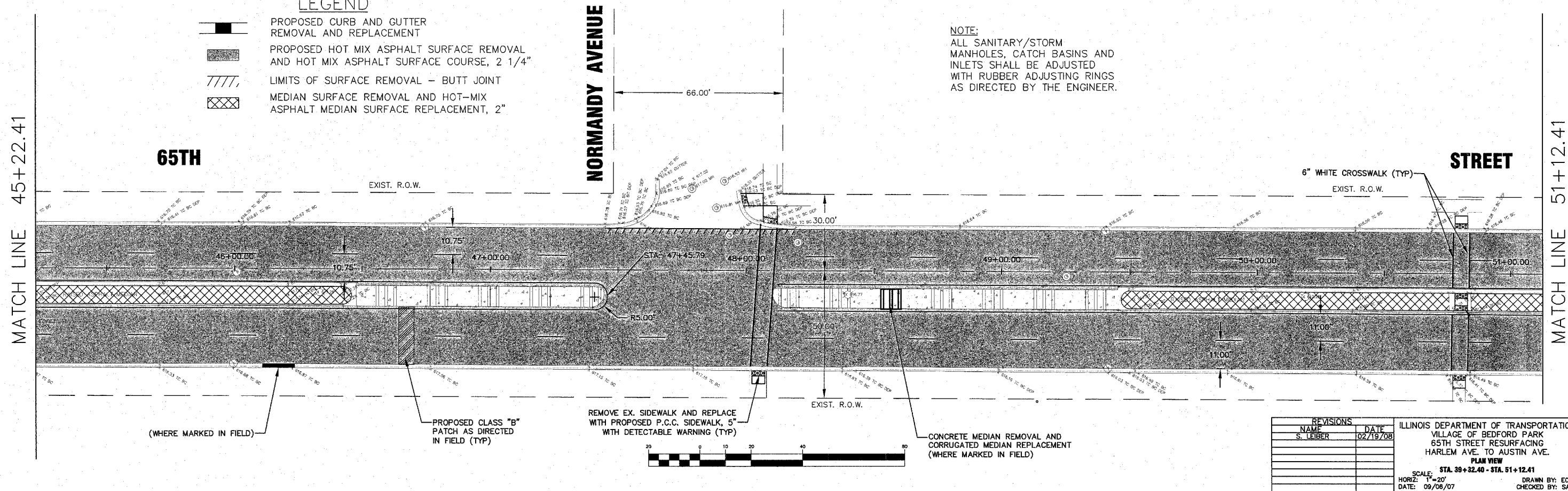
FAU RTE.	SECTION	COUNTY	TOTAL SHEETS	SHEET NO.
1524	08-00028-00-RS	COOK	16	7
STA. 10+00		TO STA. 94+00.00		
FED. ROAD DIST. NO.	ILLINOIS	FED. AID PROJECT		
CONTRACT NO. 63018				



**hbe** **Hoeffler-Butler Engineering, Inc.**  
 Consulting Civil Engineers - Land Surveyors  
 PROFESSIONAL DESIGN FIRM LICENSE NO. 184-08889  
 8714 S. ROBERTS ROAD WILCOXVILLE HILLS, ILLINOIS 60457  
 (708) 599-6988 FAX (708) 599-6796

- LEGEND**
- PROPOSED CURB AND GUTTER REMOVAL AND REPLACEMENT
  - PROPOSED HOT MIX ASPHALT SURFACE REMOVAL AND HOT MIX ASPHALT SURFACE COURSE, 2 1/4"
  - LIMITS OF SURFACE REMOVAL - BUTT JOINT
  - MEDIAN SURFACE REMOVAL AND HOT-MIX ASPHALT MEDIAN SURFACE REPLACEMENT, 2"

**NOTE:**  
 ALL SANITARY/STORM MANHOLES, CATCH BASINS AND INLETS SHALL BE ADJUSTED WITH RUBBER ADJUSTING RINGS AS DIRECTED BY THE ENGINEER.



REVISIONS	
NAME	DATE
S. LEIBER	02/19/08

ILLINOIS DEPARTMENT OF TRANSPORTATION  
 VILLAGE OF BEDFORD PARK  
 65TH STREET RESURFACING  
 HARLEM AVE. TO AUSTIN AVE.  
**PLAN VIEW**  
 STA. 39+32.40 - STA. 51+12.41  
 SCALE: 1"=20'  
 HORIZ: 1"=20'  
 DATE: 09/06/07  
 DRAWN BY: ECC  
 CHECKED BY: SAL