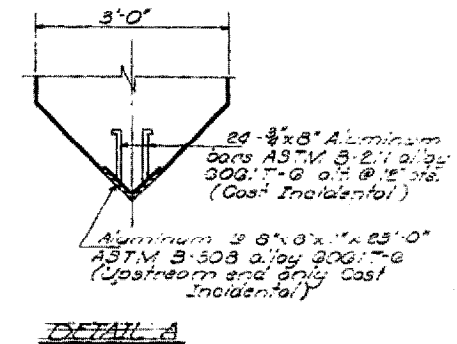
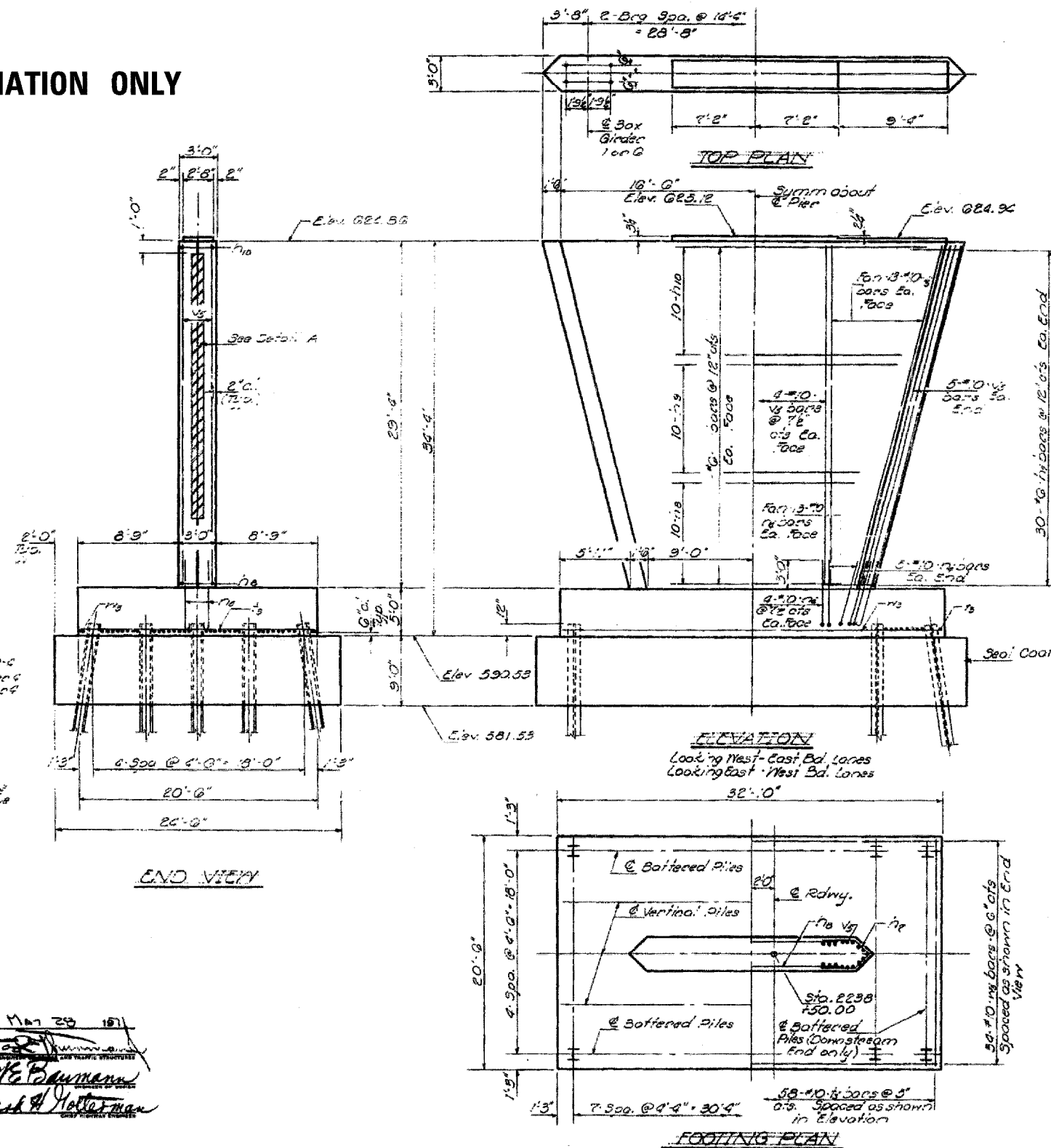


NOTES:
 Min. bar laps = 42 dia unless
 otherwise noted.
 All splices shall have standard 3'
 diameter except as noted.
 Rein. splices shall be made with
 lap.

STATE OF ILLINOIS
 DEPARTMENT OF PUBLIC WORKS & BUILDINGS
 DIVISION OF HIGHWAYS

ROUTE NO.	SECTION	COUNTY	TOTAL SHEETS	SHEET NO.
403	3B	WHITESIDE	32	25
SHEET NO. 23				
27 SHEETS				

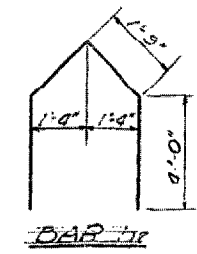
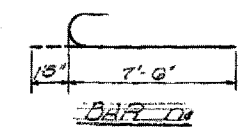
FOR INFORMATION ONLY



NOTES:
 Drill holes for anchor bolts before
 the structural steel is erected.
 The cofferdam shall be flooded
 when the water level is above
 Elevation 622.5.
 Seal Coat design based on pile
 lengths shown.

PIER 4
 BILL OF MATERIAL

Bar	No	Size	Length	Shape
#7	120	#6	11'-0"	U
#8	40	#6	17'-9"	—
#9	40	#6	23'-9"	—
#10	40	#6	28'-3"	—
#4	140	#10	8'-11"	U
#3	116	#10	20'-3"	—
#5	140	#10	29'-0"	—
#12	68	#10	32'-0"	—
Class X Concrete Cu.Yds 429.2				
Reinforcement Bars Lbs 48,090				
Steel Piles (2-20x18) Lin. Ft. 2,223				
Seal Coats (4x10x12) Each 2				
Seal Coat Concrete Cu.Yds 601.6				
Cofferdams Each 2				



PILE DATA
 Type: Steel HP 10x42
 Capacity: Drive to refusal
 25' depth 26" dia 3" dia 2-4
 No. Piles: 39H 39H 39H 39H

Notes:
 Section on pier
 indicated shall be
 2'-11"

DESIGNED	John W. Blythe	EXAMINED	May 23 1971
CHECKED	James J. Conner	PASSED	W. E. Bauman
DRAWN	J. SCHNEIDER	CHECKED	Richard A. Holtzman
CHECKED	JF		

PIER 4
 F.A. RT. 403 SEC. 3B-3B-3
 WHITESIDE COUNTY
 STA. 2238150.00