

F.A.P. RTE.	SECTION	COUNTY	TOTAL SHEETS	SHEET NO.
317	(24,25)RS-2	LIVINGSTON	18	1

STATE OF ILLINOIS
DEPARTMENT OF TRANSPORTATION
DIVISION OF HIGHWAYS

**PROPOSED
HIGHWAY PLANS**

F.A.P. 317 (U.S. RTE. 24)
SECTION (24,25)RS-2
PROJECT ACF-0317(077)
LIVINGSTON COUNTY

C - 93 - 037 - 04

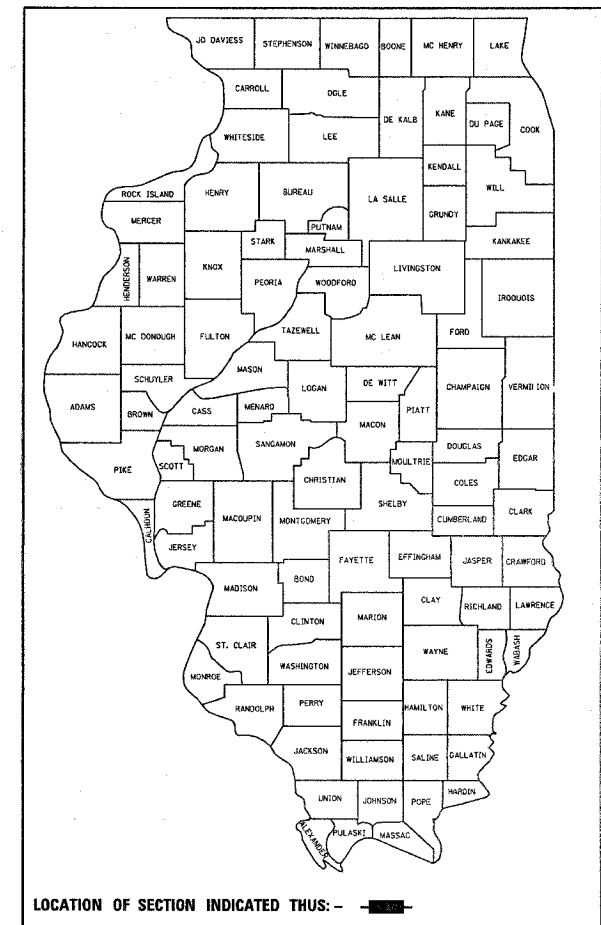
U.S. RTE. 24 FROM E.C.L. OF FORREST TO THE FORD COUNTY LINE

INDEX OF SHEETS

- 1 COVER SHEET
- 2 GENERAL NOTES, STANDARDS, AND SIGNATURE BLOCK
- 3 SUMMARY OF QUANTITIES
- 4-5 TYPICAL SECTIONS
- 6 PROJECT LOCATION MAP
- 7-9 SCHEDULES OF QUANTITIES
- 10-12 PAVEMENT MARKING SHEETS
- 13-18 DETAILS

HIGHWAY STANDARDS

- 000001-05 STANDARD SYMBOLS, ABBREVIATIONS AND PATTERNS
- 001006 DECIMAL OF AN INCH AND OF A FOOT
- 406201-01 MAILBOX TURNOUT
- 482011-03 BIT. SHOULDER STRIPS/SHOULDERS WITH RS OR WIDENING & RS PROJECTS
- 701201-02 LANE CLOSURE, 2L, 2W, DAY ONLY, FOR SPEEDS > 45 MPH
- 701306-01 LANE CLOSURE, 2L, 2W, SLOW MOVING OPERATIONS DAY ONLY, FOR SPEEDS ≥ 45 MPH
- 701311-02 LANE CLOSURE, 2L, 2W, MOVING OPERATIONS - DAY ONLY
- 701336-04 LANE CLOSURE, 2L, 2W, WORK AREAS IN SERIES, FOR SPEEDS ≥ 45 MPH
- 701901 TRAFFIC CONTROL DEVICES
- 781001-02 TYPICAL APPLICATIONS RAISED REFLECTIVE PAVEMENT MARKERS

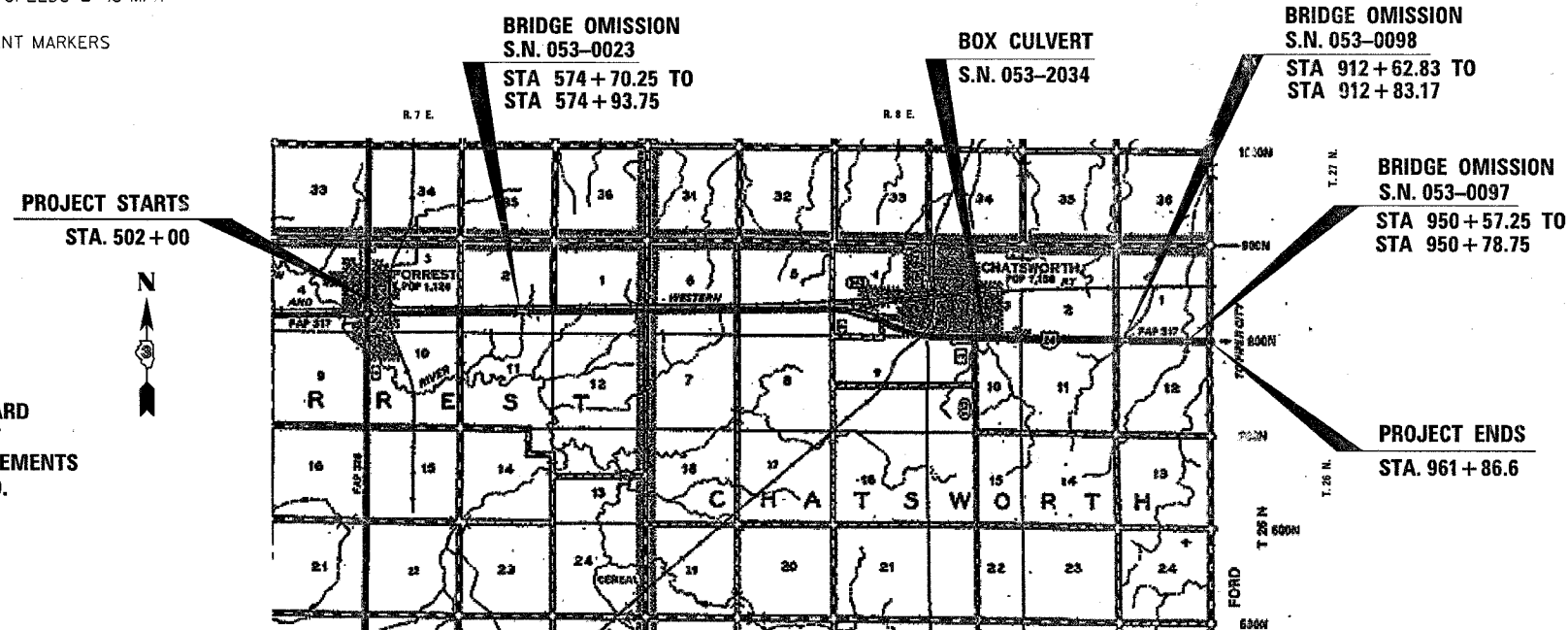


LOCATION OF SECTION INDICATED THUS: -

HIGHWAY CLASSIFICATION - OTHER PRINCIPAL ARTERIAL

2005 ADT = 3550

P.C. = 63% S.U. = 14% M.U. = 23%



LOCATION MAP
NOT TO SCALE

FULL SIZE PLANS HAVE BEEN PREPARED USING STANDARD ENGINEERING SCALES, REDUCED SIZED PLANS WILL NOT CONFORM TO STANDARD SCALES, IN MAKING MEASUREMENTS ON REDUCED PLANS, THE ABOVE SCALES MAY BE USED.

MICROFILMED _____
REEL NUMBER _____
AWARDED _____
RESIDENT ENGINEER _____
AS BUILT CHANGES WERE MADE ON THE FOLLOWING SHEETS _____

JULIE 1-800-892-0123

DISTRICT 3 NO. (815) 434-6131

PROJECT ENGINEER: DAVE BROVIAK
UNIT CHIEF: SCOTT FERGUSON
TOWNSHIP: FORREST, CHATSWORTH

CONTRACT NO. 66435

GROSS LENGTH = 45986.60 FT. = 8.71 MI.
NET LENGTH = 45901.93 FT. = 8.69 MI.

STATE OF ILLINOIS
DEPARTMENT OF TRANSPORTATION
DIVISION OF HIGHWAYS

SUBMITTED MARCH 31 2008

George R. Brown
DEPUTY DIRECTOR OF HIGHWAYS, REGION ENGINEER

May 9, 2008
Eric E. Harant
ENGINEER OF DESIGN AND ENVIRONMENT

May 9, 2008
Christine M. Reed
DIRECTOR OF HIGHWAYS, CHIEF ENGINEER

PRINTED BY THE AUTHORITY
OF THE STATE OF ILLINOIS

APR 11, 2008 - 11:15:20 AM
c:\p\proj\ecrs\ecr\03604\cvs\shf.dgn