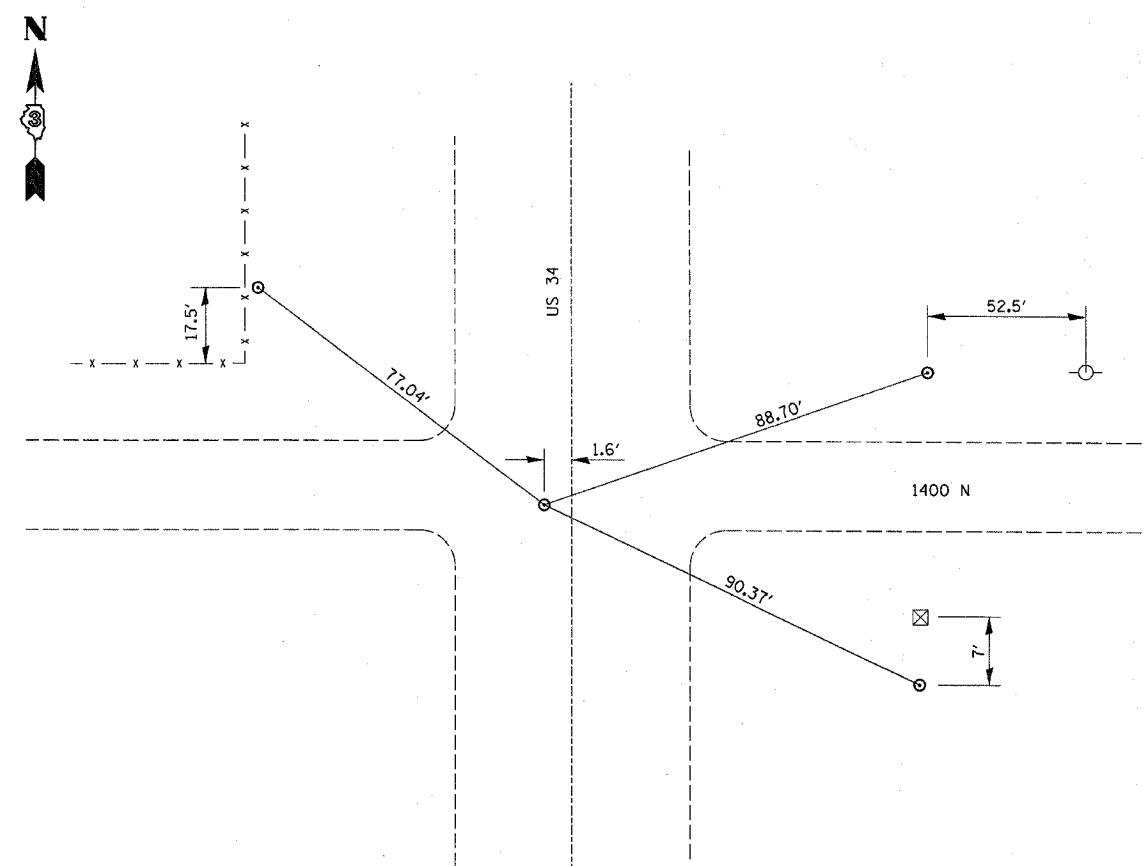


F. A.P. REL.	SECTION	COUNTY	TOTAL SHEETS	SHEET NO.
613	(8)RS-5	BUREAU	22	11
STA.		TO STA.		
FED. ROAD DIST. NO.	ILLINOIS	FED. AID PROJECT		



SOUTH QUARTER CORNER, SEC. 24
STA. 801+92.5