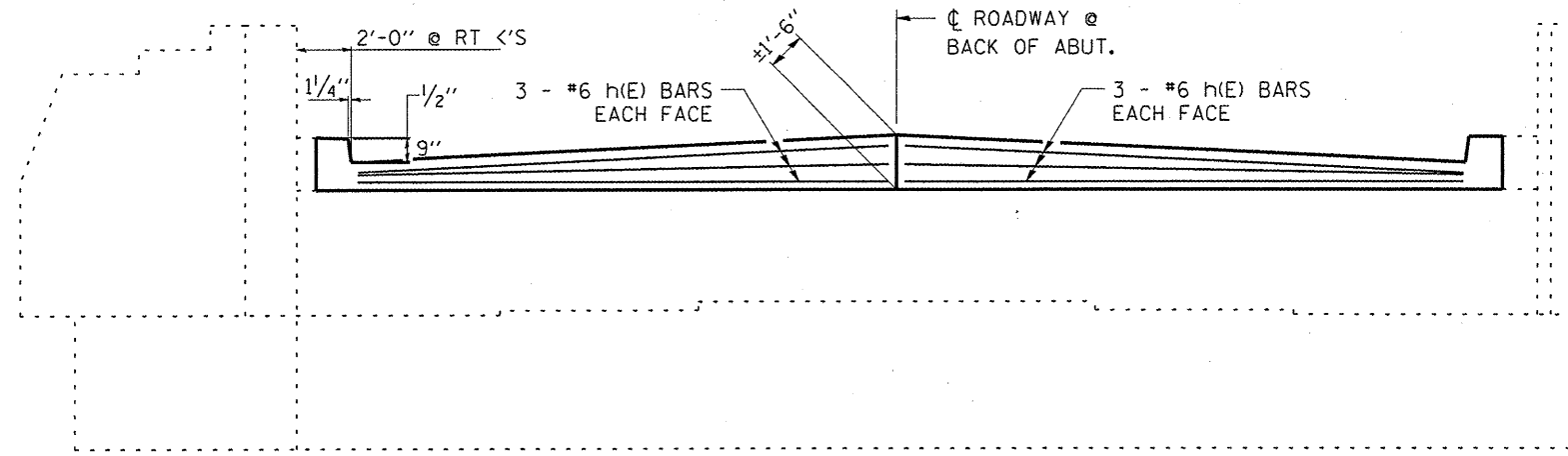
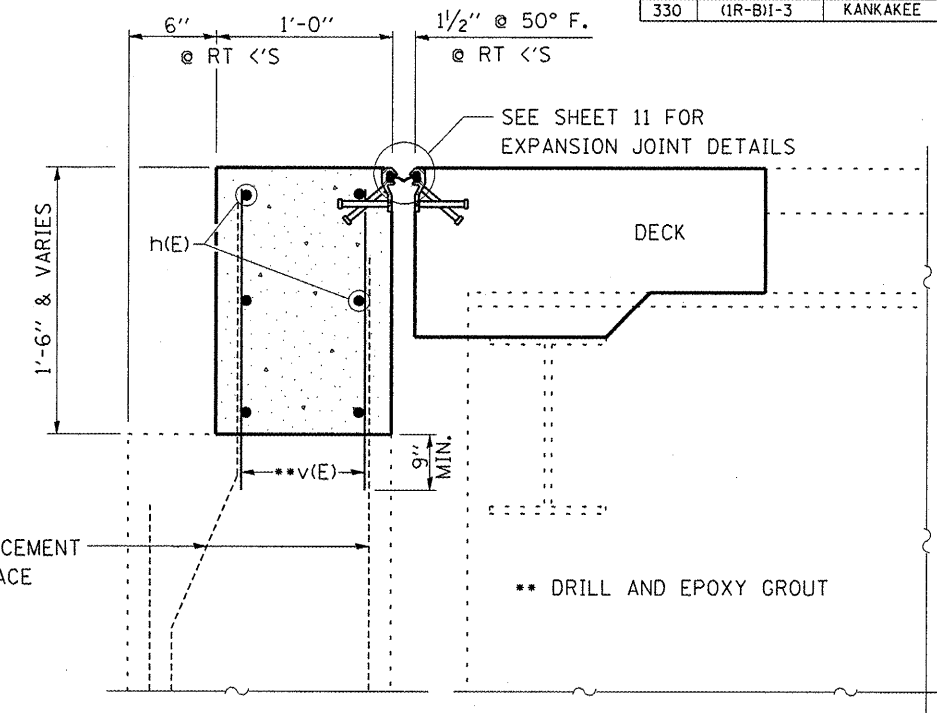


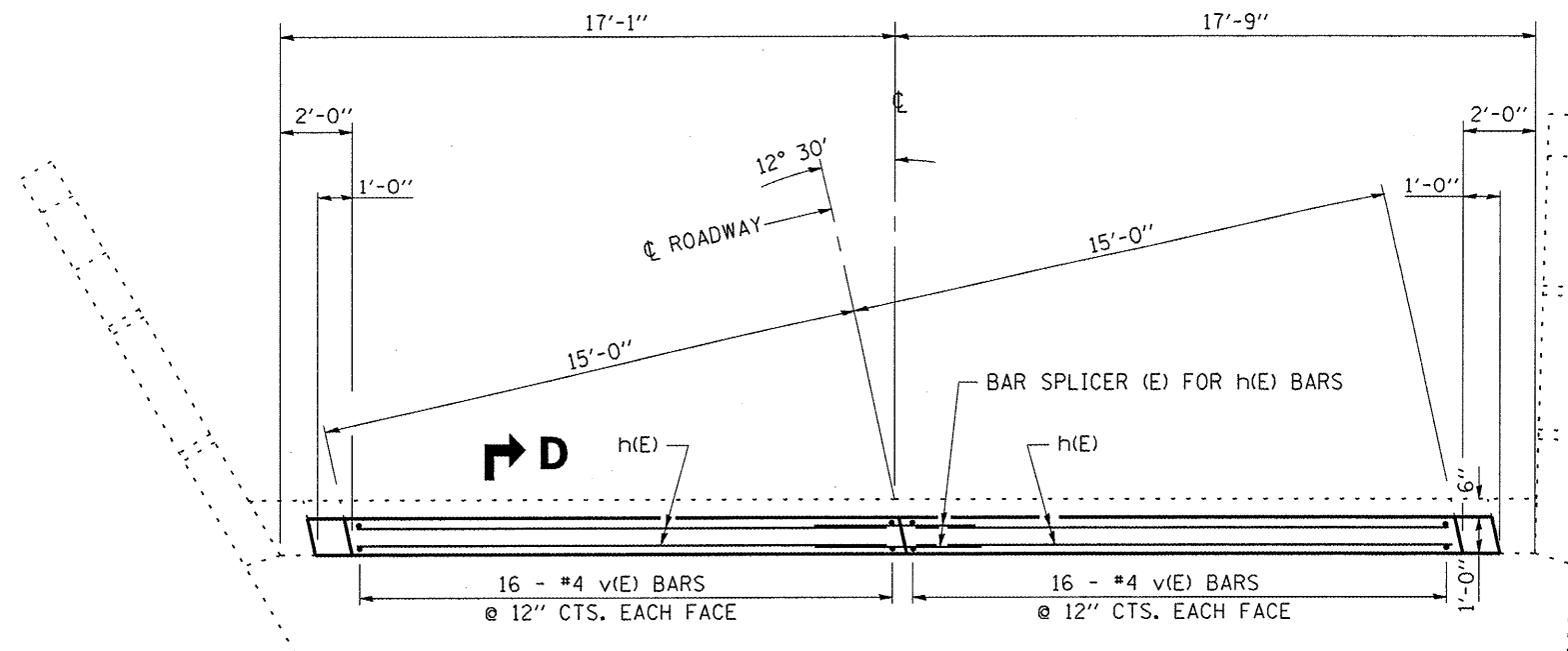
F.A.P. RTE.	SECTION	COUNTY	TOTAL SHEETS	SHEET NO.
330	(1R-B)I-3	KANKAKEE	20	13



ELEVATION



SECTION D-D



PLAN

LOOKING WITH DIRECTION OF TRAFFIC

ABUTMENT REINFORCEMENT

Bar	No.	Size	Length	Shape
h(E)	12	#6	15'-0"	—
v(E)	64	#4	2'-1"	—
Bar Splicers		Epoxy Coated	Each	6
Reinforcement Bars,		Epoxy Coated	Pound	360

Reinforcement bars designated (E) shall be epoxy coated.

Quantities shown are calculated for "One" abutment only

REVISIONS	
NAME	DATE

ILLINOIS DEPARTMENT OF TRANSPORTATION
PROPOSED ABUT. DETAILS
 FAP 330 (IL 17) SECTION (1R-B)I-3
 KANKAKEE COUNTY
 STA. 228 + 10.95
 SN 046-0039 (EB) & SN 046-0040 (WB)

Mar 05, 2008 - 08:40:00 AM
 C:\pco\pco\pco\lcm\lcm303\der\al1s.dgn