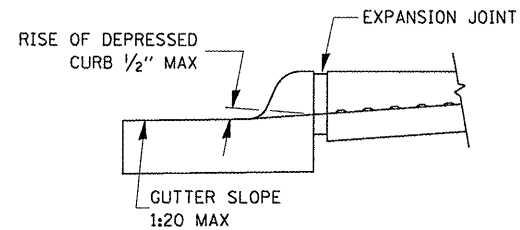
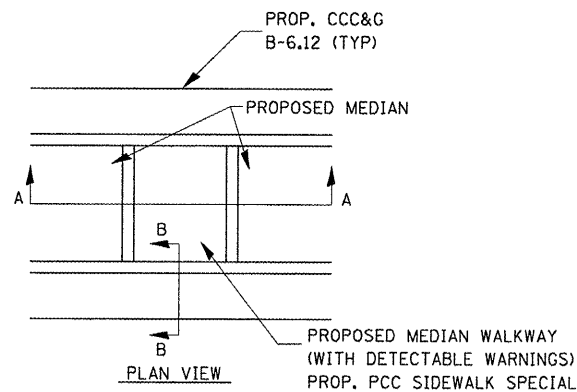
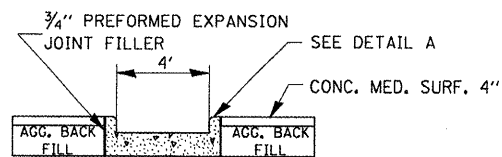


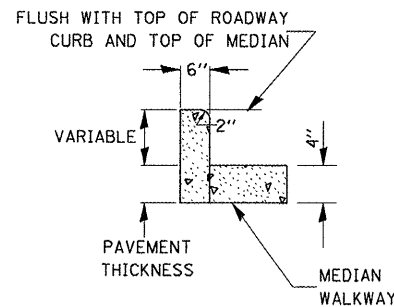
**REMOVE AND REPLACE EXISTING INLET**



SECTION B-B



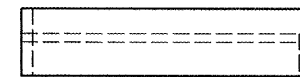
SECTION A-A  
SIDE CURB IS INCIDENTAL TO PCC SIDEWALK SPECIAL



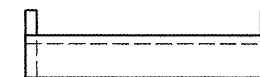
DETAIL A  
(SIDE CURB MAY BE CONSTRUCTED MONOLITHICALLY WITH RAMP)

**ADA SIDEWALK ACCESSIBILITY RAMPS  
CONCRETE MEDIAN DETAIL FOR SIDEWALK RAMP**

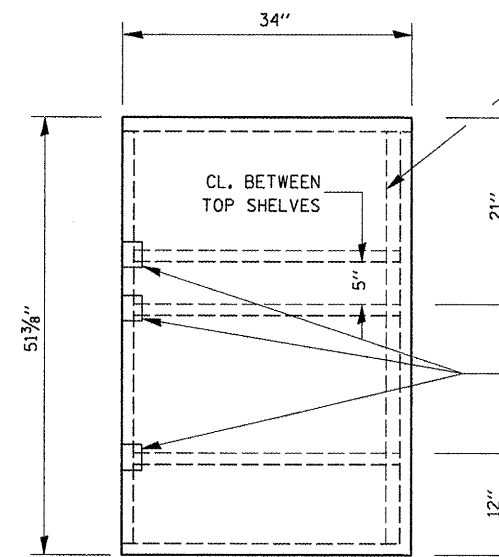
WEST MAIN, LOCATION C  
N. FRANKLIN, LOCATION F



SHELF SIDE VIEW

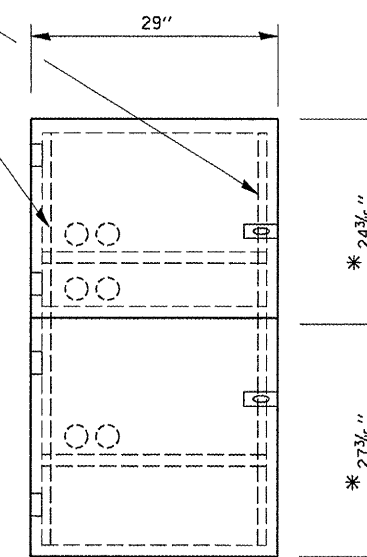


SHELF FRONT VIEW



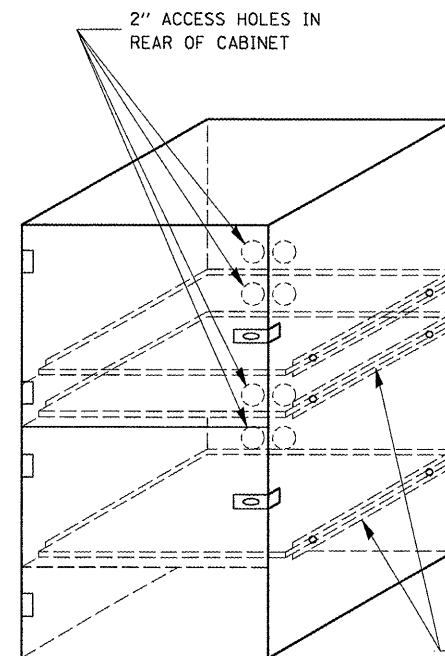
SIDE VIEW

1/2" X 1/2" FLAT STOCK WELD TO FORM DOOR FRAME AND ALSO AROUND PERIMETER OF EACH DOOR.



FRONT VIEW

\* ALLOWS FOR 1/8" CLEARANCE AT TOP AND BOTTOM OF CABINET AND BETWEEN DOORS.



NOTES:

1. USE 16 GAUGE STEEL FOR CABINET.
2. THE TOP SHELF SHALL SLIDE IN OR OUT WITH THE TOP DOOR OPEN.
3. ALL HINGES AND HASPS WILL BE WELDED TO THE CABINET.
4. ALL EDGES SHALL BE GROUND SMOOTH.
5. TWO (2" DIA.) ACCESS HOLES WILL BE REQUIRED FOR EACH SHELF.
6. CABINET SHALL BE PAINTED WITH TWO COATS OF FLAT PAINT.
7. 2 EACH MATCHING KEY PADLOCKS, WITH 3 KEYS PROVIDED, MASTER MODEL 3 T OR EQUIVALENT.
8. 4 EACH PLAIN STEEL, NON-REMOVABLE PIN, NO HOLE 4" X 4" SQUARE CORNER HINGES TO BE WELDED ON.
9. 2 EACH EXTRA HEAVY, PLAIN STEEL, FIXED STAPLE, NO HOLE, 7/4" HASPS TO BE WELDED ON.

**LOCKABLE COMPUTER CABINET**

FILE NAME =  
c:\projects\ed03208\details.dgn

USER NAME = corcoran  
DRAWN -  
CHECKED -  
DATE -

DESIGNED -  
REVISED -  
REVISED -  
REVISED -  
REVISED -

STATE OF ILLINOIS  
DEPARTMENT OF TRANSPORTATION

SCALE: SHEET NO. OF SHEETS STA. TO STA.

F.A.P. RTE.	SECTION	COUNTY	TOTAL SHEETS	SHEET NO.
41	(152)	LIVINGSTON	10	8
CONTRACT NO. 66764				
FED. ROAD DIST. NO. ILLINOIS FED. AID PROJECT				