

GENERAL NOTES

FOR STABILIZATION, ALL TYPE III BARRICADES SHALL REQUIRE A MINIMUM OF FOUR SAND BAGS PER BARRICADE.

FOR NEW CONSTRUCTION, PLACE CURB RAMPS FOR SIDEWALKS (STANDARD 424001) AT ALL LOCATIONS WHERE PROPOSED SIDEWALK ABUTS CURB AT STREET ENTRANCES.

ANY REFERENCE TO A STANDARD IN THESE PLANS SHALL BE INTERPRETED TO MEAN THE EDITION AS INDICATED BY THE SUBNUMBER SHOWN IN THE LIST OF STANDARDS OR THE COPY INCLUDED IN THESE PLANS.

THE FOLLOWING RATES OF APPLICATION HAVE BEEN USED IN CALCULATING PLAN QUANTITIES:

GRANULAR MATERIALS	2.05	TONS / CU YD
SHORT TERM PAVEMENT MARKING	10	FT /100 FT OF APPLICATION

SUMMARY OF QUANTITIES		100xST. 5000	
Code No.	Item	Unit	Total
42400100	PORTLAND CEMENT CONCRETE SIDEWALK 4 INCH	SQ FT	434
42400500	PORTLAND CEMENT CONCRETE SIDEWALK, SPECIAL	SQ FT	115
42400800	DETECTABLE WARNING	SQ FT	116
44000500	COMBINATION CURB AND GUTTER REMOVAL	FOOT	1303
44000600	SIDEWALK REMOVAL	SQ FT	434
44003100	MEDIAN REMOVAL	SQ FT	630
44003800	MEDIAN SURFACE REMOVAL	SQ FT	4067
60255800	MANHOLES TO BE ADJUSTED WITH NEW TYPE 1 FRAME, CLOSED LID	EACH	1
60261300	INLETS TO BE ADJUSTED WITH NEW TYPE 11 FRAME AND GRATE	EACH	2
60603800	COMBINATION CONCRETE CURB AND GUTTER, TYPE B-6.12	FOOT	1303
60618300	CONCRETE MEDIAN SURFACE, 4 INCH	SQ FT	3530
60624600	CORRUGATED MEDIAN	SQ FT	630
67000400	ENGINEER'S FIELD OFFICE, TYPE A	CAL MO	3
67100100	MOBILIZATION	L SUM	1
70102635	TRAFFIC CONTROL AND PROTECTION, STANDARD 701701	L SUM	1
70102640	TRAFFIC CONTROL AND PROTECTION, STANDARD 701801	L SUM	1
70103815	TRAFFIC CONTROL SURVEILLANCE	CAL DA	15
70300100	SHORT-TERM PAVEMENT MARKING	FOOT	2000
70301000	WORK ZONE PAVEMENT MARKING REMOVAL	SQ FT	667
78008300	POLYUREA PAVEMENT MARKING TYPE II - LETTERS ^{AND} SYMBOLS	SQ FT	183.6
78008310	POLYUREA PAVEMENT MARKING TYPE II - LINE 4"	FOOT	1890
78008330	POLYUREA PAVEMENT MARKING TYPE II - LINE 6"	FOOT	360
78008340	POLYUREA PAVEMENT MARKING TYPE II - LINE 8"	FOOT	45
78008350	POLYUREA PAVEMENT MARKING TYPE II - LINE 12"	FOOT	1002
78008370	POLYUREA PAVEMENT MARKING TYPE II - LINE 24"	FOOT	217
78200300	PRISMATIC CURB REFLECTOR	EACH	80
78300100	PAVEMENT MARKING REMOVAL	SQ FT	2151
X0323622	AGGREGATE BACKFILL	TON	89
Z0048665	RAILROAD PROTECTIVE LIABILITY INSURANCE	L SUM	1

• SPECIALTY ITEMS

STATE OF ILLINOIS
DEPARTMENT OF TRANSPORTATION
DISTRICT THREE

PREPARED BY: [Signature]
DISTRICT STUDIES & PLANS ENGINEER

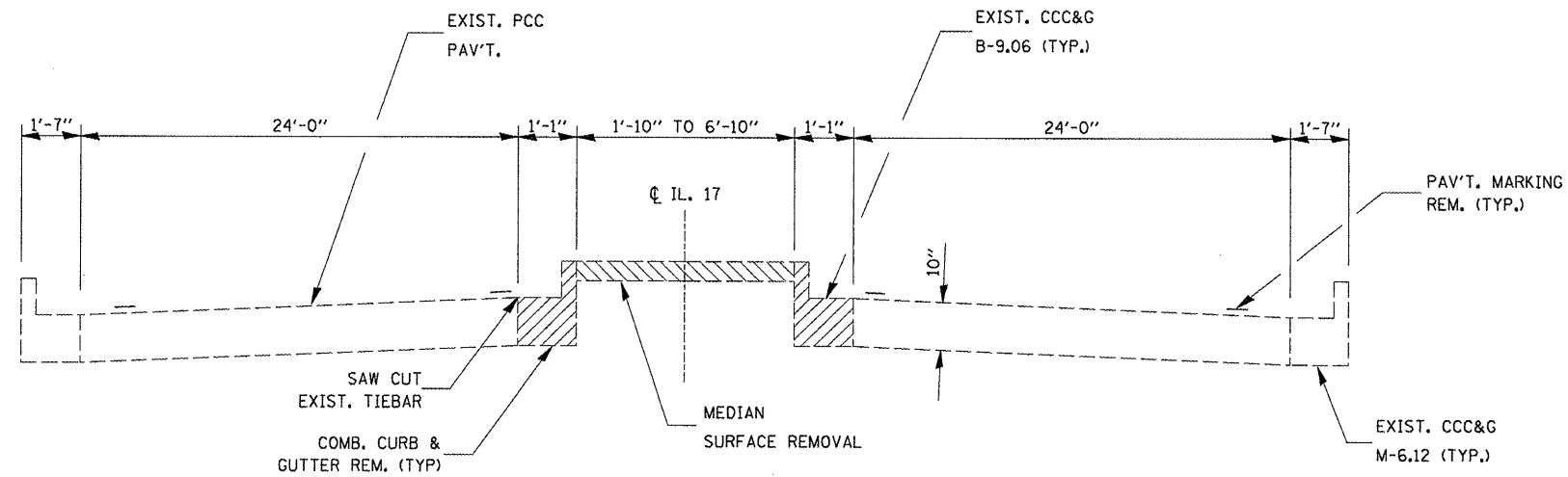
DATE: 3-19-08

EXAMINED BY: [Signature]
DISTRICT CONSTRUCTION ENGINEER

[Signature]
DISTRICT MATERIALS ENGINEER

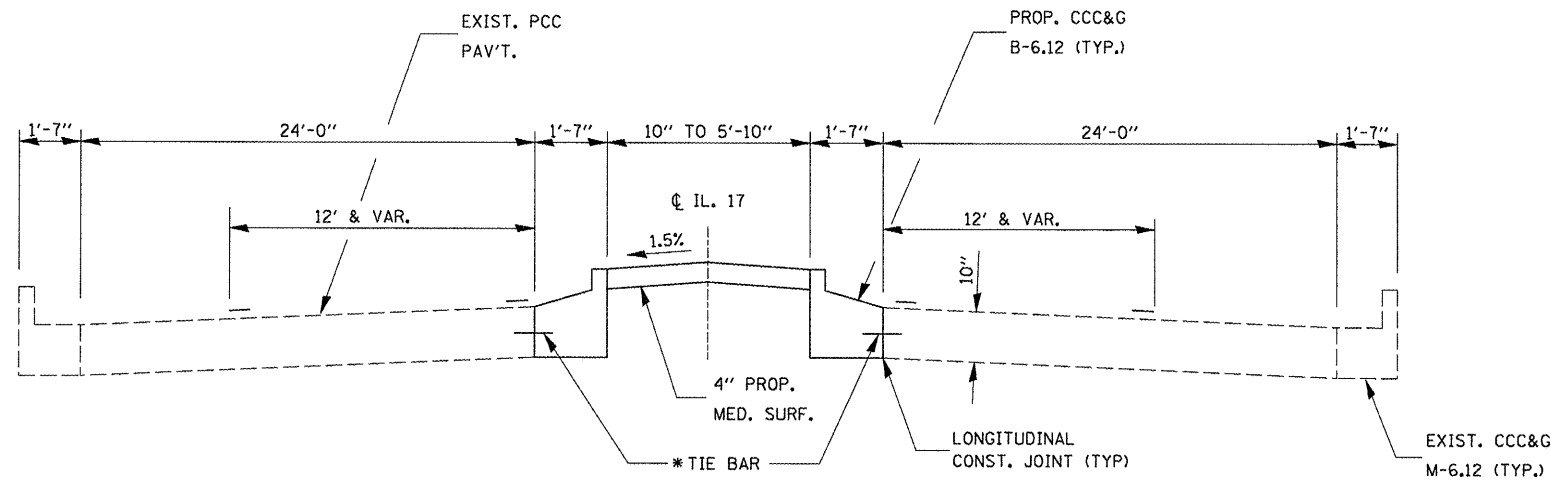
[Signature]
DISTRICT OPERATIONS ENGINEER

FILE NAME = c:\projects\ed03208\details.dgn	USER NAME = corcoranlm	DESIGNED - DRAWN -	REVISED - REVISED -	STATE OF ILLINOIS DEPARTMENT OF TRANSPORTATION	GENERAL NOTES & SUMMARY OF QUANTITIES	F.A.P. RTE. 41	SECTION (152)	COUNTY LIVINGSTON	TOTAL SHEETS 10	SHEET NO. 2
PLOT SCALE = 100.0000' / IN.	CHECKED -	REVISED -	SCALE:			SHEET NO. OF SHEETS STA. TO STA.	FED. ROAD DIST. NO.	ILLINOIS FED. AID PROJECT	CONTRACT NO. 66764	
PLOT DATE = Mar 19, 2008 - 10:46:25 AM	DATE	REVISED -								



TYPICAL SECTION SHOWING REMOVAL

STA. 37+78 TO STA. 39+50
 STA. 40+75 TO STA. 41+70



PROPOSED TYPICAL SECTION

STA. 37+78 TO STA. 39+50
 STA. 40+75 TO STA. 41+70

* NOTE:
 NO. 6 EPOXY COATED TIE BARS 24" LONG AT 24" CENTERS.
 GROUTED IN PLACE. TIE BARS WILL BE INCIDENTAL TO CCC&G B-6.12

FILE NAME =
 c:\projects\ed03208\details.dgn

USER NAME = corcoranlm	DESIGNED -	REVISED -
	DRAWN -	REVISED -
PLOT SCALE = 100.0000' / IN.	CHECKED -	REVISED -
PLOT DATE = Mar 19, 2009 - 10:39:21 AM	DATE -	REVISED -

STATE OF ILLINOIS
DEPARTMENT OF TRANSPORTATION

TYPICAL SECTIONS			
SCALE:	SHEET NO.	OF SHEETS	STA. TO STA.

F.A.P. RTE.	SECTION	COUNTY	TOTAL SHEETS	SHEET NO.
41	(15Z)	LIVINGSTON	10	3
FED. ROAD DIST. NO.			ILLINOIS FED. AID PROJECT	
			CONTRACT NO. 66764	

MEDIAN, CURB, & SIDEWALK SCHEDULE													
STATION	LOCATION LETTER	COMB CURB & GUTTER REM	MEDIAN REM	MEDIAN SURF REM	SIDEWALK REM	CCC&G TYPE B-6.12	CONC MED SURFACE 4"	CORRUGATED MEDIAN	PCC SIDEWALK 4"	PCC SIDEWALK SPECIAL	DETECTABLE WARNING	AGGREGATE BACKFILL	PRISM CURB REFLECT
		FOOT	SQ FT	SQ FT	SQ FT	FOOT	SQ FT	SQ FT	SQ FT	SQ FT	SQ FT	TON	EACH
IL 17 36+78 to 37+78	A		400					400					
37+47 LT	1	10			42	10			42		10		
37+47 RT	2	30			185	30			185		20		
IL 17 37+78 to 39+50	B	359		926		359	746					19	14
WEST MAIN	C	176		689		176	649			95	20	16	8
38+32 RT	3	10			64	10			64		12		
IL 17 & N. FRANKLIN TURN	D	65		131		65	115					3	8
IL 17 & S. FRANKLIN TURN	E	59		143		59	126					3	8
39+29 LT	4	15			65	15			65		20		
N. FRANKLIN	F	143		259		143	183			20	20	5	8
S. FRANKLIN	G	170		1321		170	1236					31	12
40+01 LT	5	10			78	10			78		14		
IL 17 TURN	H	49		105		49	83					2	12
IL 17 40+75 to 41+70	I	207		493		207	392					10	10
IL 17 41+70 to 42+20	J		230					230					
TOTAL		1303	630	4067	434	1303	3530	630	434	115	116	89	80

PAVEMENT MARKING SCHEDULE										
STATION	LOCATION LETTER	LENGTH	POLYUREA PAVEMENT MARKING						LETTERS & SYMBOLS	PAVEMENT MARKING REMOVAL
			4"		6"	8"	12"	24"		
			WHITE	YELLOW	WHITE	WHITE	WHITE	WHITE		
			FOOT	FOOT	FOOT	FOOT	FOOT	FOOT	SO FT	SO FT
IL 17 35+78 to 36+78		100	200	200			44			133
IL 17 36+78 to 37+78	A	100	138	120			94			86
37+47 LT	1				120		120			180
37+47 RT	2									
IL 17 37+78 to 39+50	B	172		360				54	61.2	422
WEST MAIN	C		35		110		153	55		333
38+32 RT	3									
IL 17 & N. FRANKLIN TURN	D		32				45			22
IL 17 & S. FRANKLIN TURN	E		70			45	60			20
39+29 LT	4									
N. FRANKLIN	F			145	130		126	72	61.2	445
S. FRANKLIN	G		30				45			57
40+01 LT	5									
IL 17 TURN	H			50						17
IL 17 40+75 to 41+70	I	95		210			180	36	61.2	336
IL 17 41+70 to 42+20	J	50		100			60			33
IL 17 42+20 to 43+20		100		200			75			67
TOTAL			505	1385	360	45	1002	217	183.6	2151

FILE NAME =
 c:\projects\ed03208\details.dgn

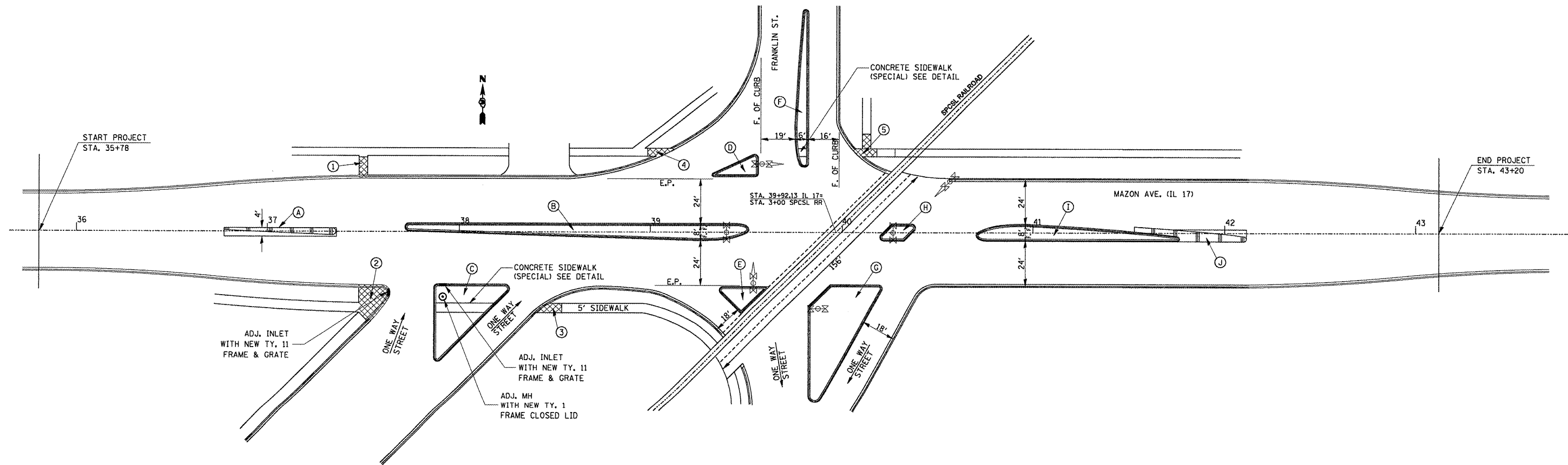
USER NAME = corcoranlm	DESIGNED -	REVISED -
	DRAWN -	REVISED -
PLOT SCALE = 100.0000' / IN.	CHECKED -	REVISED -
PLOT DATE = Mar 19, 2008 10:45:46 AM	DATE -	REVISED -

**STATE OF ILLINOIS
 DEPARTMENT OF TRANSPORTATION**

SCHEDULES

SCALE: SHEET NO. OF SHEETS STA. TO STA.

F.A.P. RTE.	SECTION	COUNTY	TOTAL SHEETS	SHEET NO.
41	(152)	LIVINGSTON	10	4
FED. ROAD DIST. NO. ILLINOIS FED. AID PROJECT				
CONTRACT NO. 66764				



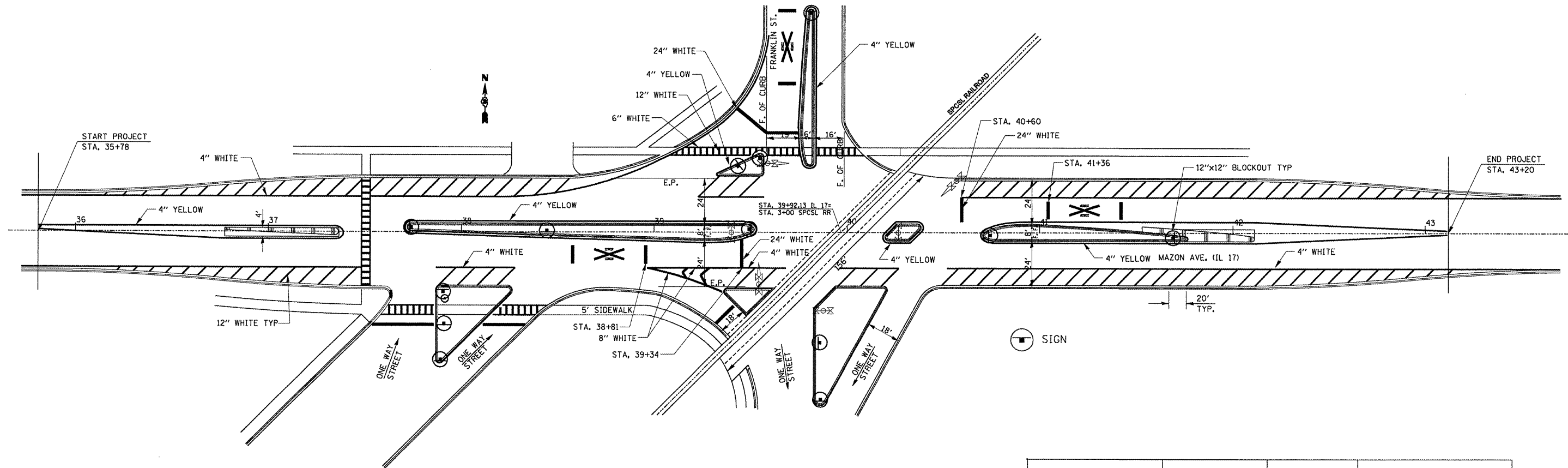
-  SIDEWALK REMOVAL AND REPLACEMENT
-  INLET
-  MANHOLE

CURB & GUTTER/MEDIAN & ISLAND NOSE DETAIL

MAIN STREET INTERSECTION
SEE SCHEDULE FOR LOCATION NUMBER PAY ITEMS

NOTE:
ALL MEDIAN NOSES SHALL BE RAMPED.
SIDEWALK RAMPS SHALL BE ADA ACCESSIBLE.
WHEN BUTTING UP AGAINST EXIST. CONC.
USE 3/4" EXPANSION FILLER.

FILE NAME = c:\projects\led03208\details.dgn	USER NAME = corcoranlm	DESIGNED -	REVISED -	STATE OF ILLINOIS DEPARTMENT OF TRANSPORTATION	DETAILS	F.A.P. RTE.	SECTION	COUNTY	TOTAL SHEETS	SHEET NO.
	PLOT SCALE = 50,0000' / IN.	DRAWN -	REVISED -			41	(15Z)	LIVINGSTON	10	5
PLOT DATE = Mar 25, 2008 - 01:34:23 PM	CHECKED -	REVISED -	REVISED -		SCALE: SHEET NO. OF SHEETS STA. TO STA.		CONTRACT NO. 66764			
	DATE -	REVISED -	REVISED -				FED. ROAD DIST. NO. [ILLINOIS] FED. AID PROJECT			



NOTE:
 REPLACE SIGNS IN MEDIANS,
 CONSTRUCT 12"x12" BLOCKOUTS
 FOR EACH SIGN

LOCATION	STANDARD NUMBER	HEIGHT	DISTANCE FROM CENTER LINE
F. A. P. ROUTE IL 17		FOOT	FOOT
STA. 37+75 RT.	W12-1	7'	57'
STA. 37+83 RT.	R5-1	7'	55'
STA. 37+85 RT.	R5-1A	7'	55'
STA. 37+83 RT.	R4-7	7'	2'
STA. 37+85 RT.	R1-1	7'	41'
STA. 38+60 LT.	R6-1	7'	1'
STA. 39+51 LT.	R1-1	7'	33'
STA. 39+56 LT.	R4-7	7'	2'
STA. 39+83 LT.	R1-1	7'	43'
STA. 39+79 LT.	R4-7	7'	128.5'
STA. 39+83 LT.	R6-1	7'	52'
STA. 39+83 LT.	R5-1A	7'	91'
STA. 41+69 RT.	R4-7	7'	2'

FILE NAME =
 c:\projects\ed83288\details.dgn

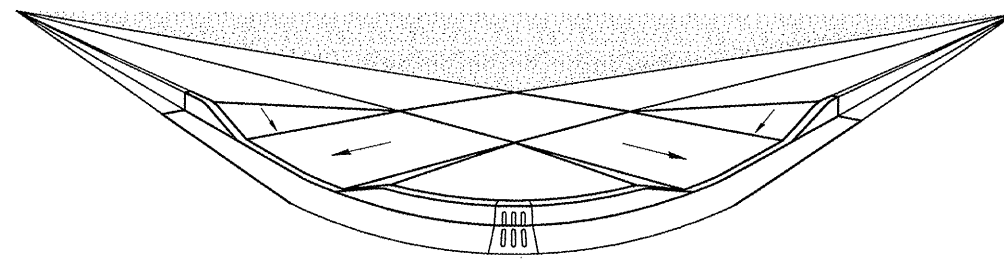
USER NAME = corcoranlm	DESIGNED -	REVISED -
	DRAWN -	REVISED -
PLOT SCALE = 50.0000' / IN.	CHECKED -	REVISED -
PLOT DATE = Mar 25, 2008 - 01:34:36 PM	DATE -	REVISED -

**STATE OF ILLINOIS
 DEPARTMENT OF TRANSPORTATION**

DETAILS

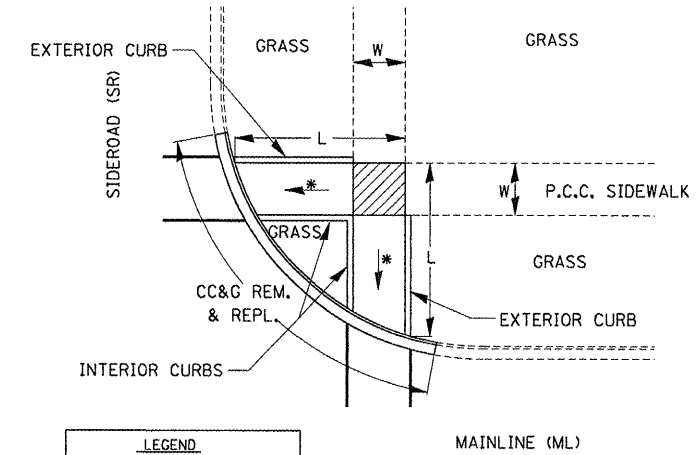
SCALE: SHEET NO. OF SHEETS STA. TO STA.

F.A.P. RTE. 41	SECTION (152)1	COUNTY LIVINGSTON	TOTAL SHEETS 10	SHEET NO. 6
FED. ROAD DIST. NO. ILLINOIS FED. AID PROJECT			CONTRACT NO. 66764	



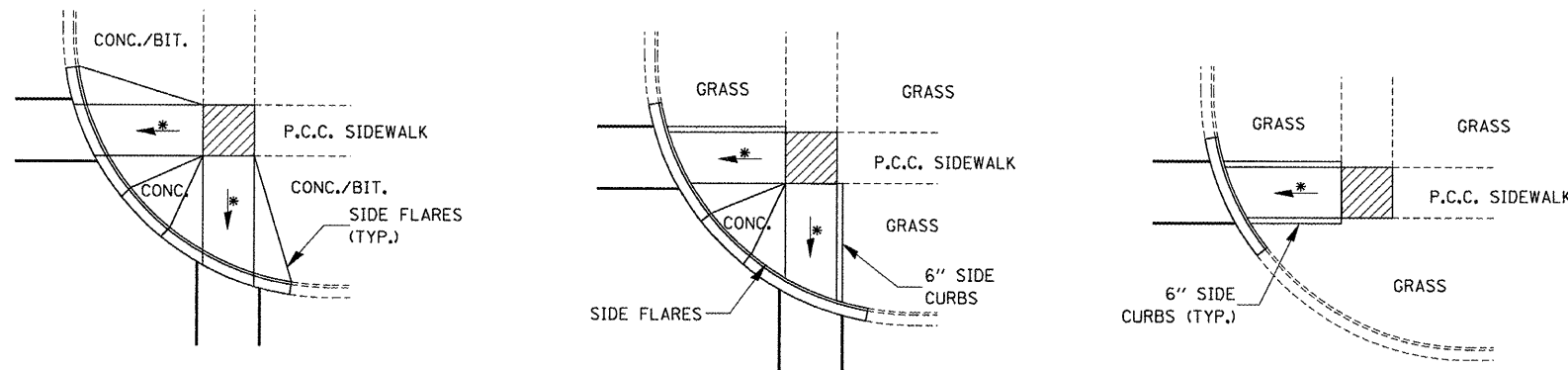
LEGEND
 GRASS

ADA SIDEWALK ACCESSIBILITY RAMPS
 METHOD 1 PERSPECTIVE WITH SIDE FLARES



LEGEND
 SLOPE = 2%
 * SLOPE = 1:12 MAX.

ADA SIDEWALK ACCESSIBILITY RAMPS
 METHOD 1



TYPICAL CURB APPLICATIONS FOR METHOD 1

LEGEND
 SLOPE = 2%
 * SLOPE = 1:12 MAX.

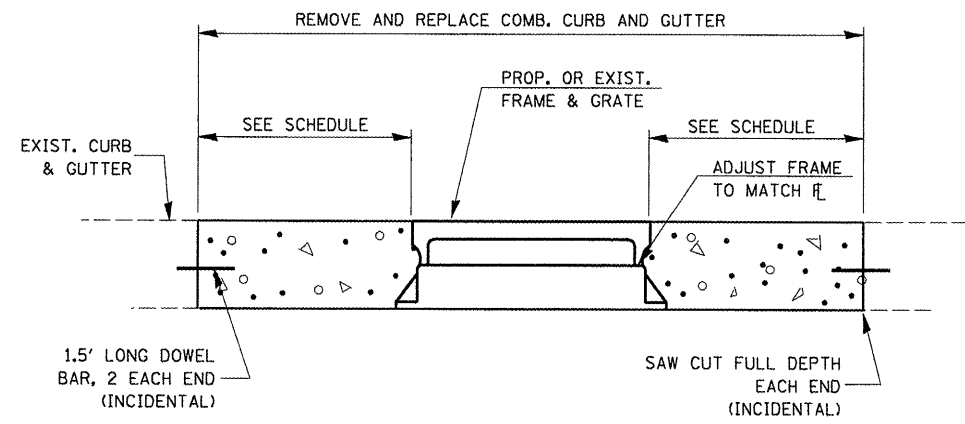
STATE OF ILLINOIS
 DEPARTMENT OF TRANSPORTATION

DETAILS

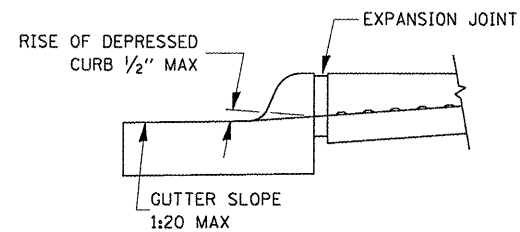
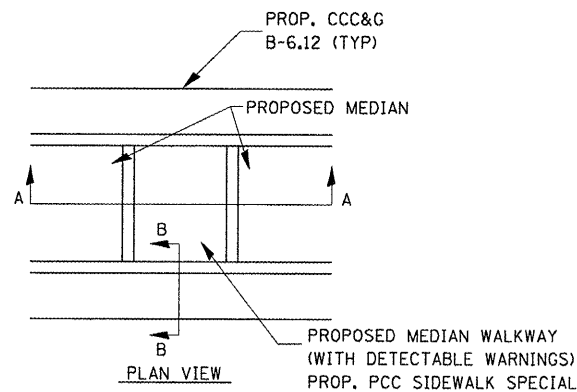
F.A.P. RTE.	SECTION	COUNTY	TOTAL SHEETS	SHEET NO.
41	(152)	LIVINGSTON	10	7
FED. ROAD DIST. NO.			ILLINOIS FED. AID PROJECT	

SCALE: SHEET NO. OF SHEETS STA. TO STA.

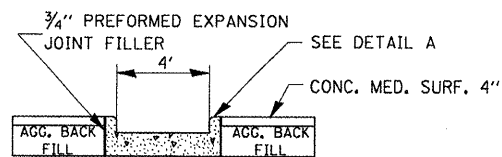
FILE NAME =	USER NAME =	DESIGNED -	REVISED -
cr:\projects\ed03208\details.dgn	corcoranlm	DRAWN -	REVISED -
PLOT SCALE = 1/8" = 1' IN.	CHECKED -	REVISED -	REVISED -
PLOT DATE = Mar 17, 2008 - 08:50:50 AM	DATE -	REVISED -	REVISED -



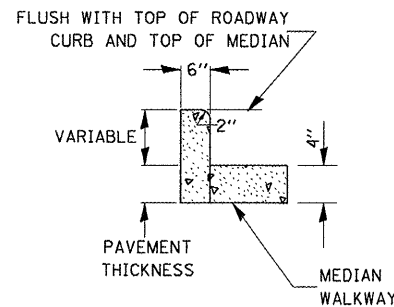
REMOVE AND REPLACE EXISTING INLET



SECTION B-B



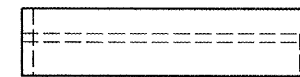
SECTION A-A
SIDE CURB IS INCIDENTAL TO PCC SIDEWALK SPECIAL



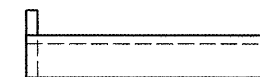
DETAIL A
(SIDE CURB MAY BE CONSTRUCTED MONOLITHICALLY WITH RAMP)

**ADA SIDEWALK ACCESSIBILITY RAMPS
CONCRETE MEDIAN DETAIL FOR SIDEWALK RAMP**

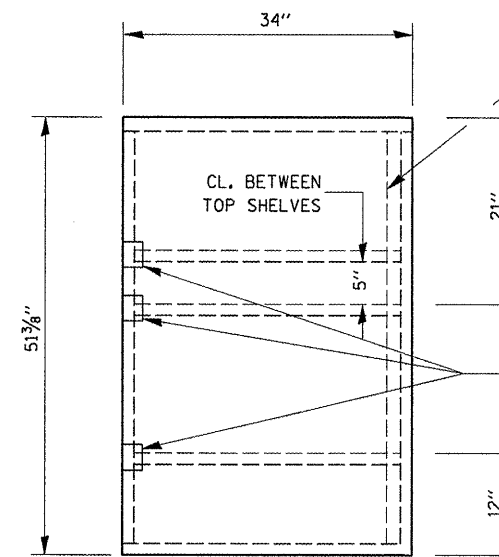
WEST MAIN, LOCATION C
N. FRANKLIN, LOCATION F



SHELF SIDE VIEW

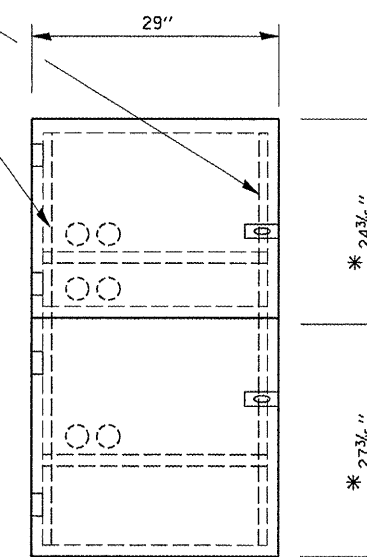


SHELF FRONT VIEW



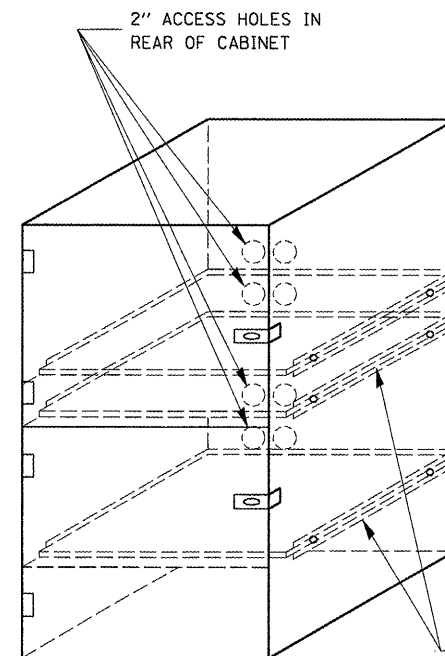
SIDE VIEW

1/2" X 1 1/2" FLAT STOCK WELD TO FORM DOOR FRAME AND ALSO AROUND PERIMETER OF EACH DOOR.



FRONT VIEW

* ALLOWS FOR 1/8" CLEARANCE AT TOP AND BOTTOM OF CABINET AND BETWEEN DOORS.



NOTES:

1. USE 16 GAUGE STEEL FOR CABINET.
2. THE TOP SHELF SHALL SLIDE IN OR OUT WITH THE TOP DOOR OPEN.
3. ALL HINGES AND HASPS WILL BE WELDED TO THE CABINET.
4. ALL EDGES SHALL BE GROUND SMOOTH.
5. TWO (2" DIA.) ACCESS HOLES WILL BE REQUIRED FOR EACH SHELF.
6. CABINET SHALL BE PAINTED WITH TWO COATS OF FLAT PAINT.
7. 2 EACH MATCHING KEY PADLOCKS, WITH 3 KEYS PROVIDED, MASTER MODEL 3 T OR EQUIVALENT.
8. 4 EACH PLAIN STEEL, NON-REMOVABLE PIN, NO HOLE 4" X 4" SQUARE CORNER HINGES TO BE WELDED ON.
9. 2 EACH EXTRA HEAVY, PLAIN STEEL, FIXED STAPLE, NO HOLE, 7/4" HASPS TO BE WELDED ON.

LOCKABLE COMPUTER CABINET

FILE NAME =
c:\projects\ed03208\details.dgn

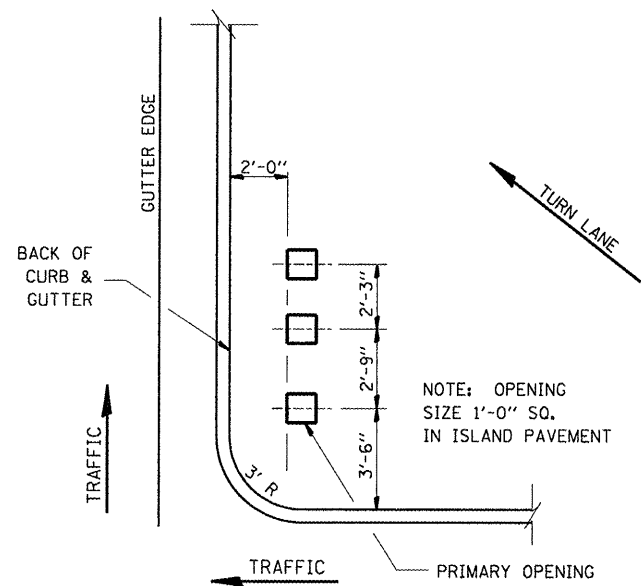
USER NAME = corcoranm
DRAWN -
PLOT SCALE = 100.0000' / IN.
PLOT DATE = Mar 19, 2008 10:30:36 AM

DESIGNED -
DRAWN -
CHECKED -
DATE -
REVISED -
REVISED -
REVISED -
REVISED -

**STATE OF ILLINOIS
DEPARTMENT OF TRANSPORTATION**

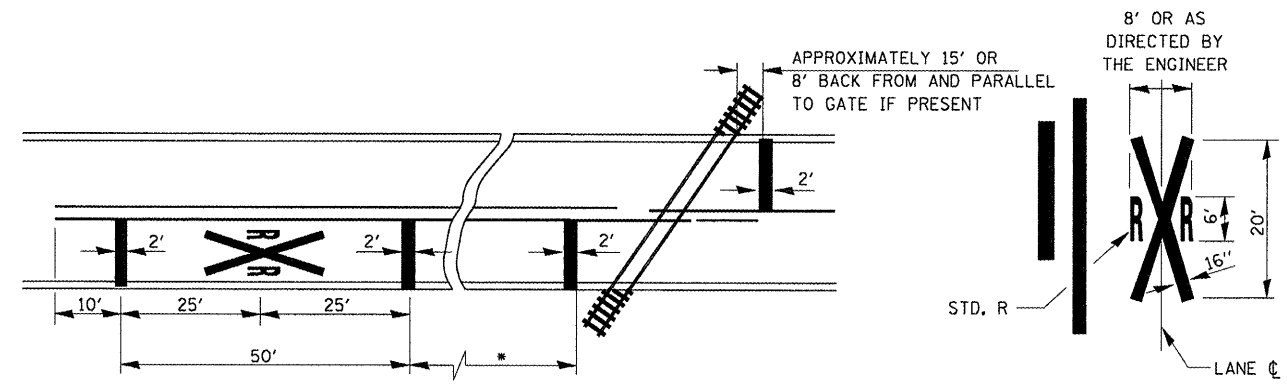
SCALE: SHEET NO. OF SHEETS STA. TO STA.

F.A.P. RTE. 41	SECTION (1521)	COUNTY LIVINGSTON	TOTAL SHEETS 10	SHEET NO. 8
CONTRACT NO. 66764				
FED. ROAD DIST. NO. ILLINOIS FED. AID PROJECT				



ISLAND SIGN POST SPACING DETAIL

NOTE: THE ENGINEER SHALL DETERMINE THE NUMBER OF OPENINGS REQUIRED.



- MINIMUM DISTANCE
- 400' FOR 55 MPH
- 250' FOR 45 MPH
- 100' FOR 35 MPH OR LESS

PAVEMENT MARKINGS AT RAILROAD-HIGHWAY GRADE CROSSING

NOTES:
THE TRANSVERSE SPREAD OF THE "X" MAY VARY ACCORDING TO LANE WIDTH.

ON MULTI-LANE ROADS, THE STOP LINES SHALL EXTEND ACROSS ALL APPROACH LANES AND SEPARATE RXR SYMBOLS SHALL BE PLACED ADJACENT TO EACH OTHER IN EACH LANE.

FILE NAME = c:\projects\ed03208\details.dgn	USER NAME = corcoranlm	DESIGNED -	REVISED -	STATE OF ILLINOIS DEPARTMENT OF TRANSPORTATION	DETAILS				F.A.P. RTE.	SECTION	COUNTY	TOTAL SHEETS	SHEET NO.
	PLOT SCALE = 100,0000' / IN.	DRAWN -	REVISED -						41	(152)	LIVINGSTON	10	9
	PLOT DATE = Mar 17, 2008 - 08:51:07 AM	CHECKED -	REVISED -		REVISED -	SCALE:	SHEET NO.	OF	SHEETS	STA.	TO STA.	FED. ROAD DIST. NO.	ILLINOIS FED. AID PROJECT

