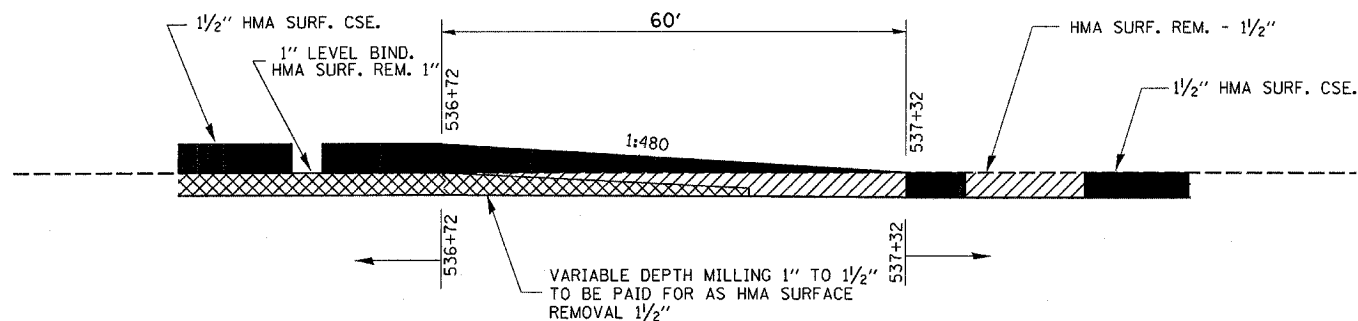
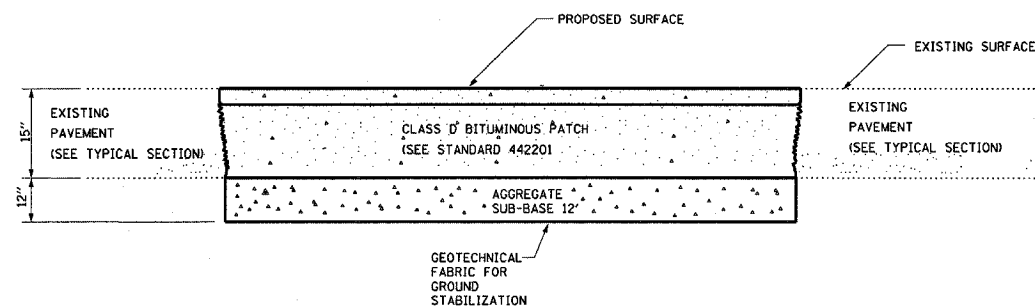


NOTE:  
WHEN MILLING OPERATIONS PRODUCE A ROUNDED EDGE, THEN A SAW CUT SHALL BE USED TO MANUFACTURE A PERPENDICULAR EDGE AS SHOWN IN THE DETAIL. THE ENGINEER SHALL BE THE SOLE JUDGE CONCERNING THE USE OF THIS DETAIL

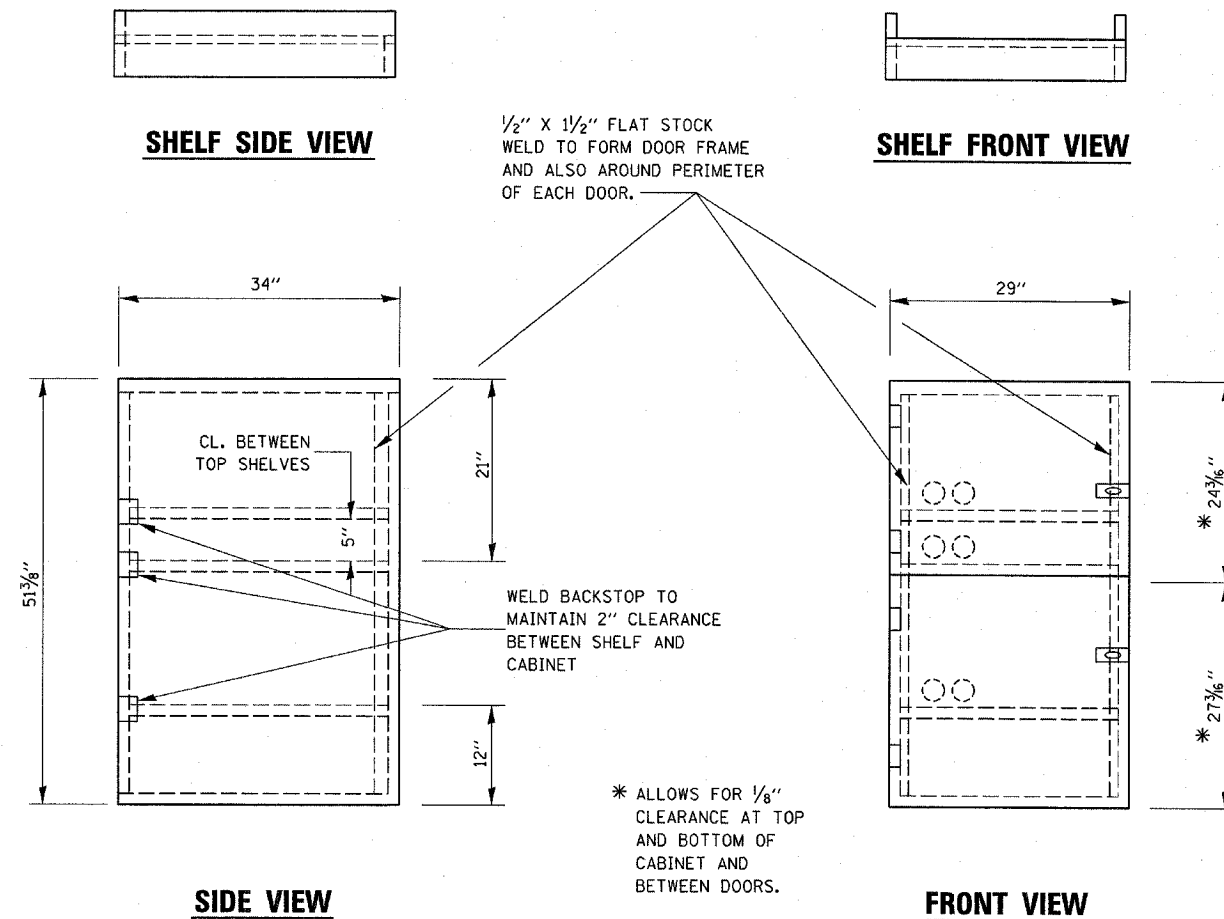
### HMA DETAIL AT BUTT JOINTS



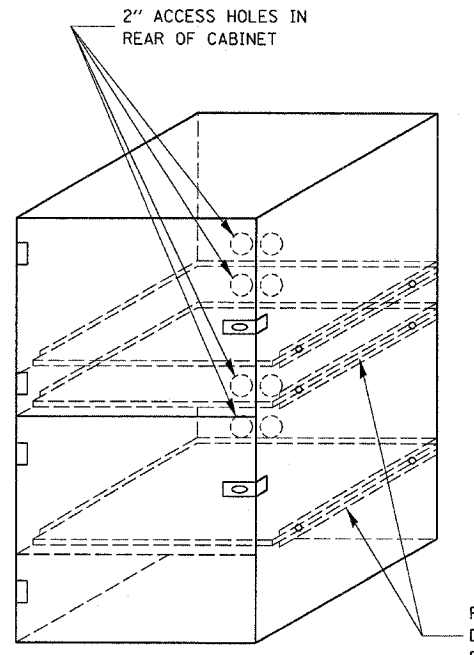
### TAPER DETAIL AT CLAY ST.



### PROPOSED CLASS D PATCHING DETAIL @ 1ST STREET



\* ALLOWS FOR 1/8 inch CLEARANCE AT TOP AND BOTTOM OF CABINET AND BETWEEN DOORS.



- NOTES:
1. USE 16 GAUGE STEEL FOR CABINET.
  2. THE TOP SHELF SHALL SLIDE IN OR OUT WITH THE TOP DOOR OPEN.
  3. ALL HINGES AND HASPS WILL BE WELDED TO THE CABINET.
  4. ALL EDGES SHALL BE GROUND SMOOTH.
  5. TWO (2" DIA.) ACCESS HOLES WILL BE REQUIRED FOR EACH SHELF.
  6. CABINET SHALL BE PAINTED WITH TWO COATS OF FLAT PAINT.
  7. 2 EACH MATCHING KEY PADLOCKS, WITH 3 KEYS PROVIDED, MASTER MODEL 3 T OR EQUIVALENT.
  8. 4 EACH PLAIN STEEL, NON-REMOVABLE PIN, NO HOLE 4" x 4" SQUARE CORNER HINGES TO BE WELDED ON.
  9. 2 EACH EXTRA HEAVY, PLAIN STEEL, FIXED STAPLE, NO HOLE, 7/4" HASPS TO BE WELDED ON.

### LOCKABLE COMPUTER CABINET

FILE NAME =	USER NAME = fergusonse	DESIGNED -	REVISED -	<b>STATE OF ILLINOIS DEPARTMENT OF TRANSPORTATION</b>	<b>CADD DETAILS</b>	F.A.P. RTE.	SECTION	COUNTY	TOTAL SHEETS	SHEET NO.
ca\projec ts\d366804\d366804-sht-cover.dgn	PLOT SCALE = 50,0000' / IN.	DRAWN -	REVISED -			317	26 RS-5	LIVINGSTON	13	12
PLOT DATE = Mar 31, 2008 - 04:57:33 PM	DATE -	CHECKED -	REVISED -			CONTRACT NO. 66804				
						FED. ROAD DIST. NO. ILLINOIS FED. AID PROJECT				