

F.A.I. RTE.	SECTION	COUNTY	TOTAL SHEETS	SHEET NO.
55	(53-6)RA-3	LIVINGSTON	6	1
FED. ROAD DIST. NO.	ILLINOIS	CONTRACT NO. 66811		

INDEX OF SHEETS

1. COVER SHEET
2. GENERAL NOTES
3. SUMMARY OF QUANTITIES
4. GENERAL SITE PLAN
5. SITE PLAN DETAILS
6. DETAILS

STANDARDS

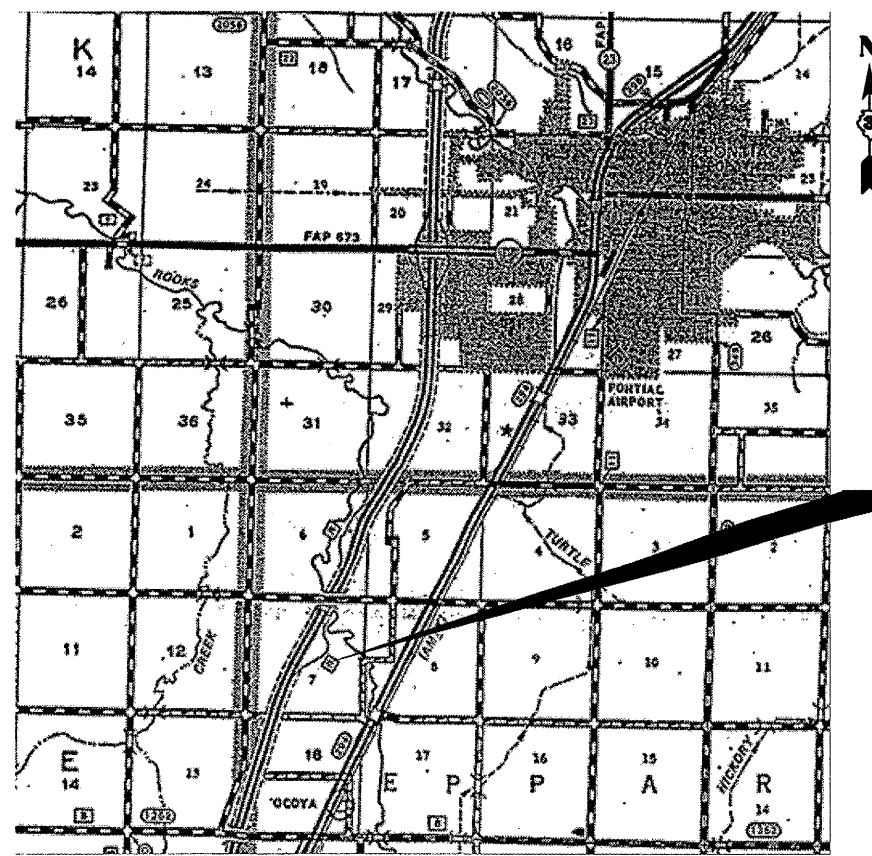
- | | |
|-----------|--|
| 000001-05 | STANDARD SYMBOLS, ABBREVIATIONS AND PATTERNS |
| 001001-01 | AREAS OF REINFORCEMENT BARS |
| 001006 | DECIMAL OF AN INCH AND OF A FOOT |
| 424001-05 | CURB RAMPS FOR SIDEWALK |
| 606001-03 | CONCRETE CURB TYPE B AND COMBINATION CONCRETE CURB AND GUTTER |
| 701001-01 | OFF-ROAD OPERATIONS 2L, 2W, MORE THAN 4.5 m (15') AWAY |
| 701006-02 | OFF-ROAD OPERATIONS 2L, 2W, 4.5 m (15') TO 600 mm (24") FROM PAVEMENT EDGE |
| 701301-02 | LANE CLOSURE, 2L, 2W, SHORT TIME OPERATIONS |
| 701801-03 | LANE CLOSURE, MULTILANE 1W OR 2W CROSSWALK OR SIDEWALK CLOSURE |
| 701901 | TRAFFIC CONTROL DEVICES |

MICROFILMED _____
 REEL NUMBER _____
 AWARDED _____
 RESIDENT ENGINEER _____
 AS BUILT CHANGES WERE MADE
 ON THE FOLLOWING SHEETS _____

J.U.L.I.E.
 JOINT UTILITY LOCATION INFORMATION FOR EXCAVATION
 1-800-892-0123

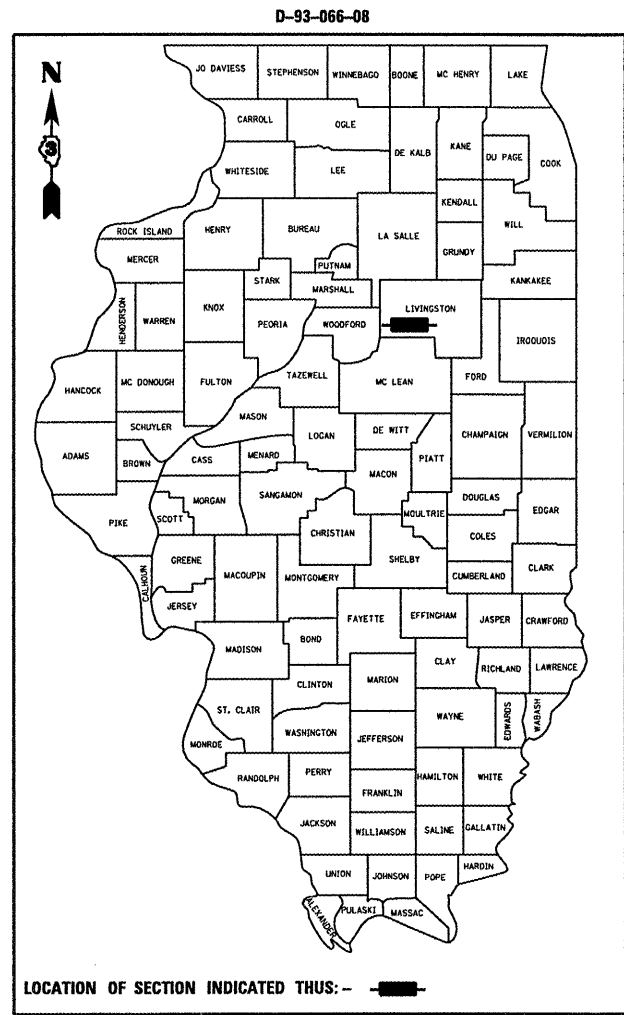
DISTRICT 3 NO. (815) 434-6131
PROJECT ENGINEER: JOE KANNEL
UNIT CHIEF: RON WOODSHANK
TOWNSHIP: AUX SABLE
CONTRACT NO. 66811

STATE OF ILLINOIS
DEPARTMENT OF TRANSPORTATION
DIVISION OF HIGHWAYS
PROPOSED
HIGHWAY PLANS
FAI ROUTE 55 (I-55)
SECTION (53-6)RA-3
LIVINGSTON COUNTY
C-93-088-08
SIDEWALK REMOVAL & REPLACEMENT



LOCATION MAP
 NOT TO SCALE
 POINT LOCATION

PROJECT LOCATION
 NORTHBOUND LIMESTONE REST AREA
 3.45 MILES SOUTH OF IL ROUTE 116 IN PONTIAC



FUNCTIONAL CLASSIFICATION
 RURAL: INTERSTATE
 FAI ROUTE 55 (I-55)
 2007 ADT = 23100
 P.V = 69.2% M.U. = 24.7% S.U. = 6.1%

STATE OF ILLINOIS
 DEPARTMENT OF TRANSPORTATION
 DIVISION OF HIGHWAYS

SUBMITTED 3/25 2008

[Signature]
 DEPUTY DIRECTOR OF HIGHWAYS, REGION ENGINEER

May 9, 2008
[Signature]
 ENGINEER OF DESIGN AND ENVIRONMENT

May 9, 2008
[Signature]
 DIRECTOR OF HIGHWAYS, CHIEF ENGINEER

PRINTED BY THE AUTHORITY
OF THE STATE OF ILLINOIS