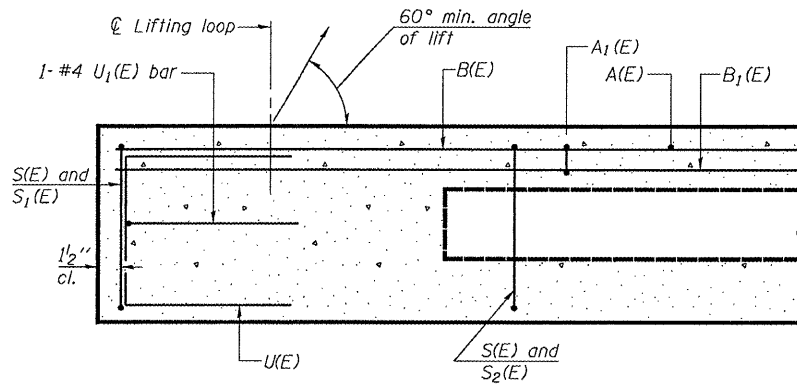


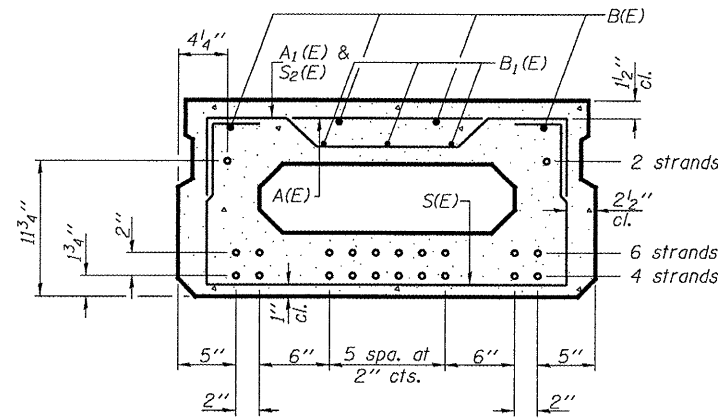
STATE OF ILLINOIS
DEPARTMENT OF TRANSPORTATION

ROUTE NO.	SECTION	COUNTY	TOTAL SHEETS	SHEET NO.	SHEET NO. 2 4 SHEETS
FAP 681	(117BR)	IROQUOIS	13	11	
FED. ROAD DIST. NO. 7		ILLINOIS		FED. AID PROJECT-	

Contract Number: 66817



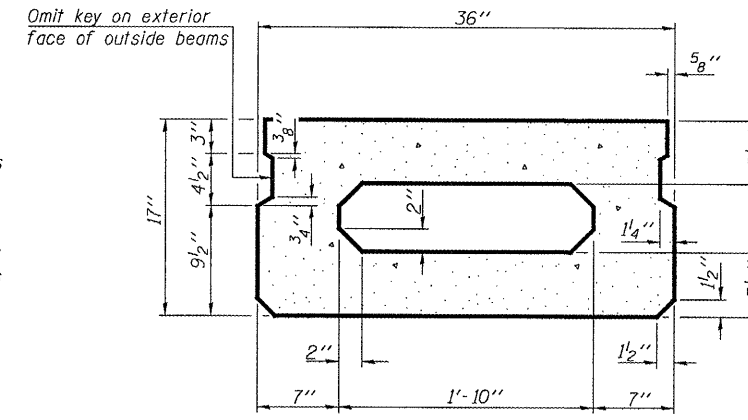
SECTION C-C



SECTION A-A

(Showing reinforcement and permissible strand locations)

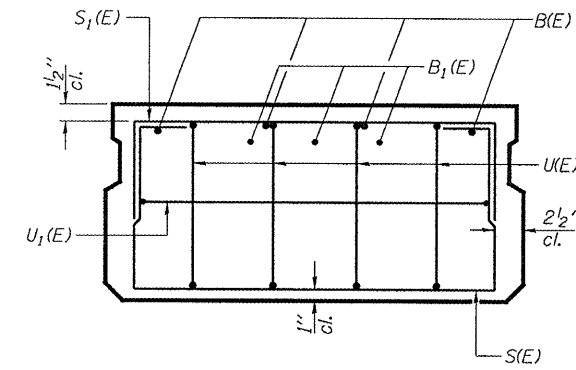
Note: Place the number of strands specified in each row symmetrically about the centerline of beam in the permissible strand locations shown.



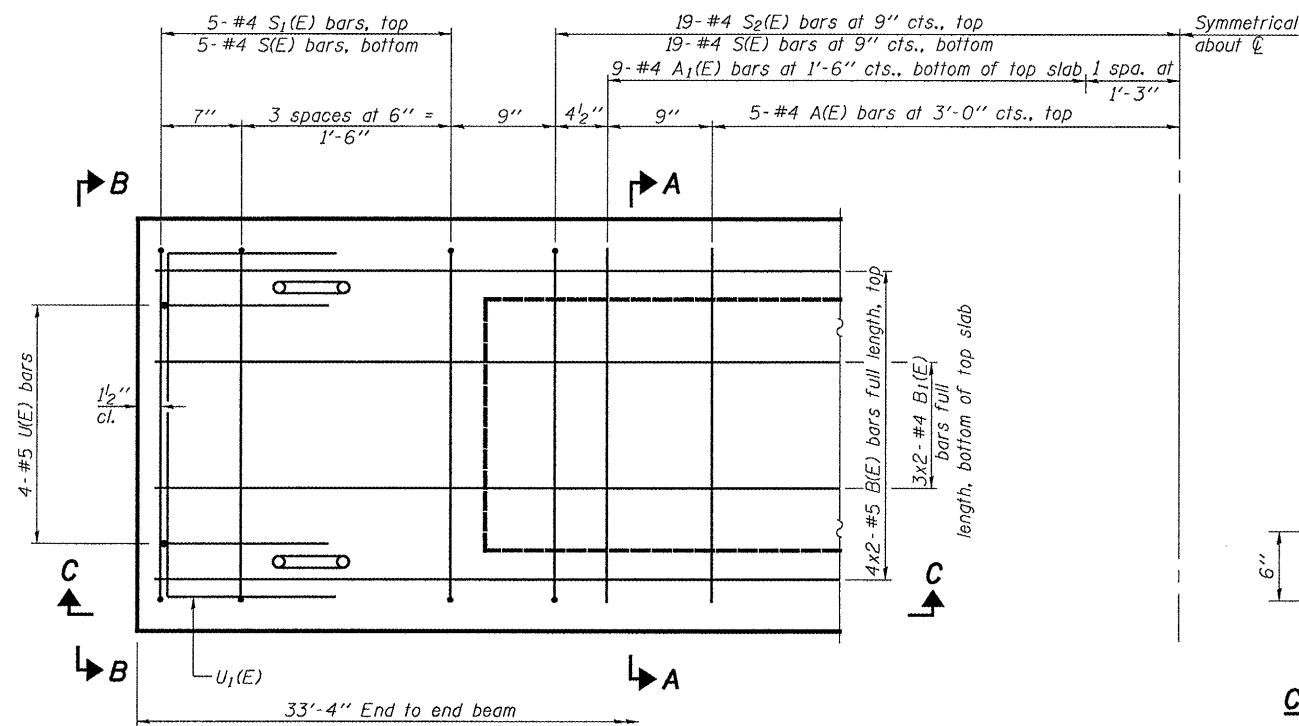
SECTION A-A

(Showing dimensions)

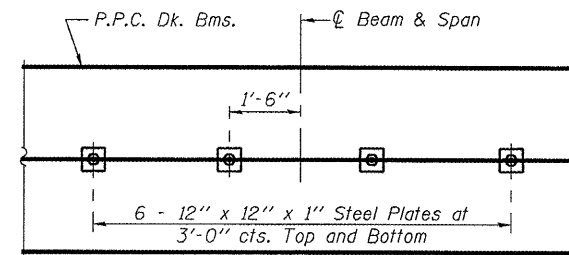
Limits of HMA surface removal and replacement. Existing water-proofing to remain. Lap new W.P.M.S. with exist. W.P.M.S.



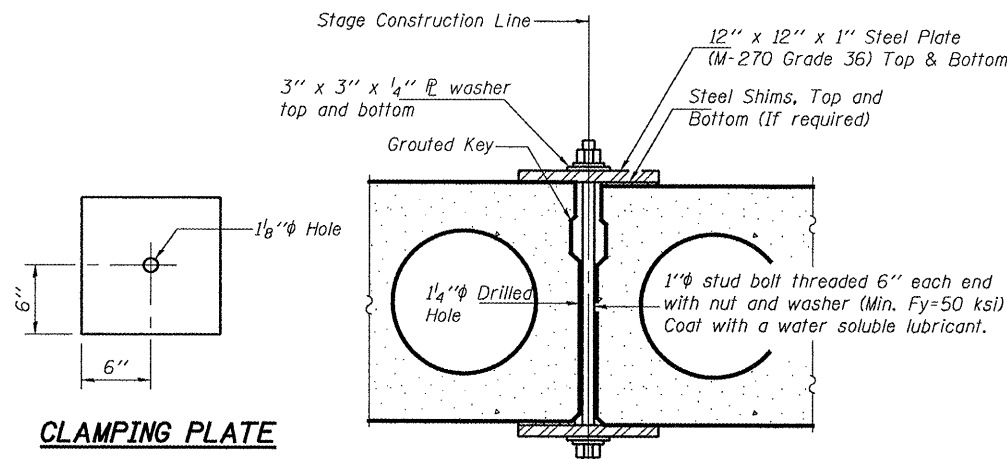
VIEW B-B



PLAN VIEW



PLAN



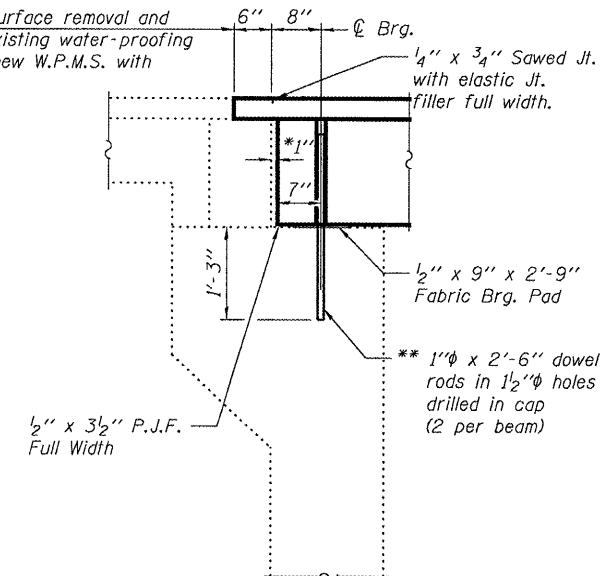
CLAMPING PLATE

SECTION

Notes:
See Special Provisions for Stage Construction Precast Prestressed Concrete Deck Beams.
See Stage Construction Detail for traffic lane. Cost is included with Precast Prestressed Concrete Deck Beams.

* 1" Joint shall be filled with non-shrink grout. Dimension may vary to accommodate tolerance in beam lengths.

** Existing dowel rods are to be burned off, ground flush, and sealed with epoxy prior to placement of new beams. Cost included in Removal of Existing PPC Deck Beams. After beams have been erected holes shall be drilled into cap and dowel rods placed. Dowel holes shall be filled with non-shrink grout to top of beam and allowed to cure a minimum of 24 hours prior to grouting the shear keys.



TYPICAL SECTION AT ABUTMENTS

BAR LIST
ONE BEAM ONLY

(For information only)

Bar	No.	Size	Length	Shape
A(E)	10	#4	2'-7"	—
A1(E)	19	#4	2'-10"	~
B(E)	8	#5	17'-8"	—
B1(E)	6	#4	17'-5"	—
S(E)	48	#4	5'-9"	U
S1(E)	10	#4	4'-3"	U
S2(E)	38	#4	4'-6"	U
U(E)	8	#5	3'-8"	U
U1(E)	2	#4	5'-0"	U

Bars indicated thus 4 x 2-#5 etc. indicates 4 lines of bars with 2 lengths per line.

Note: See sheet 3 of 4 for additional details and Bill of Material.

REPAIR DETAILS
FAP 681
IROQUOIS COUNTY
SN 038-0122

DESIGNED	ATH
CHECKED	AJB
DRAWN	Steffen
CHECKED	ATH AJB

MAY 8, 2008
EXAMINED *Carl Perry*
ENGINEER OF STRUCTURAL SERVICES
PASSED *Ralph E. Anderson*
ENGINEER OF BRIDGES AND STRUCTURES

Note: Spacing of S(E) and S2(E) bars may be adjusted up to 4" in the immediate area of the transverse tie diaphragms to miss the block outs for the transverse ties.