

F.A.P. RTE.	SECTION	COUNTY	TOTAL SHEETS	SHEET NO.
840	121BR-1	VERMILION	44	1
FED. ROAD DIST. NO.	ILLINOIS	CONTRACT NO. 70018		

STATE OF ILLINOIS  
DEPARTMENT OF TRANSPORTATION  
DIVISION OF HIGHWAYS

**PROPOSED  
HIGHWAY PLANS**

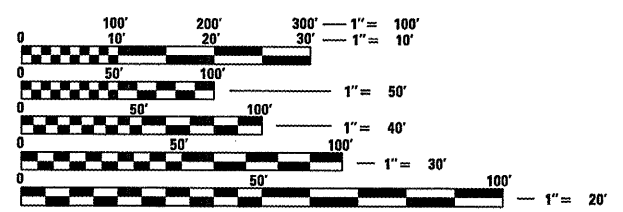
F.A.P. ROUTE 840 (IL 49)  
SECTION 121BR-1  
PROJECT ACF-0840(059)  
VERMILION COUNTY

FOR INDEX OF SHEETS, SEE SHEET NO. 2  
FOR SUMMARY OF QUANTITIES, SEE SHEET NO. 4

CURRENT ADT TRAFFIC DATA	
2007 ADT	= 1,200
2027 ADT	= 1,450
PV + PC %	= 81.9
SU %	= 5.5
MU %	= 3.9

DESIGN DESIGNATION  
MINOR ARTERIAL

SCALES { PLAN 1:20  
PROFILE HORIZ 1:20  
PROFILE VERT 1:20  
CROSS SECTIONS  
HORIZ 1:50  
VERT 1:20



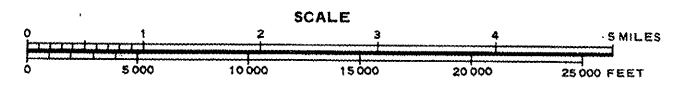
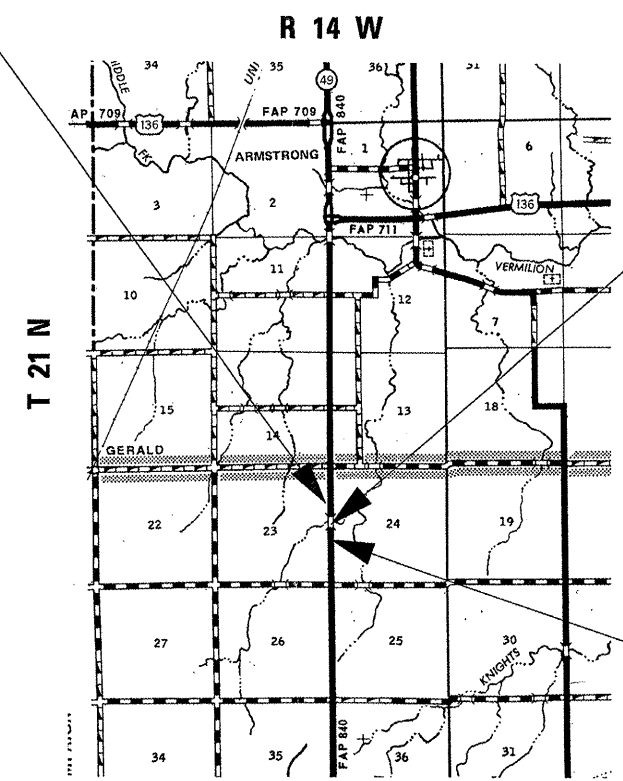
FULL SIZE PLANS HAVE BEEN PREPARED USING STANDARD ENGINEERING SCALES. REDUCED SIZED PLANS WILL NOT CONFORM TO STANDARD SCALES. IN MAKING MEASUREMENTS ON REDUCED PLANS, THE ABOVE SCALES MAY BE USED.

J.U.L.I.E.  
JOINT UTILITY LOCATION INFORMATION FOR EXCAVATION  
1-800-892-0123  
OR 811

C-95-052-99

STRUCTURE REMOVAL & CULVERT REPLACEMENT  
AT STREAM 2.6 MILES SOUTH OF U.S. 136 (E)

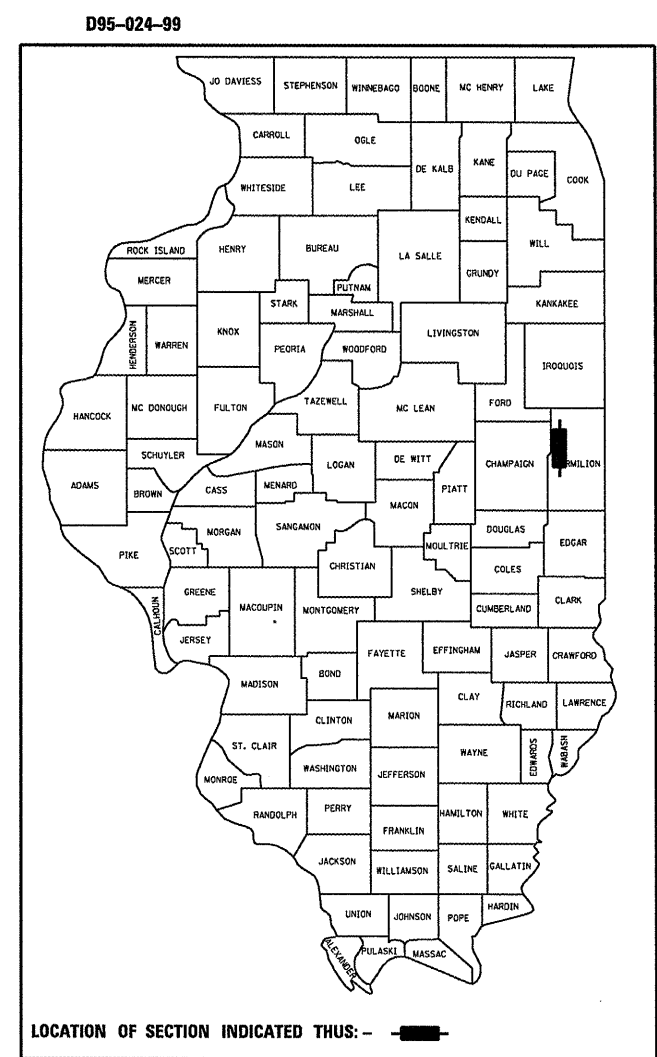
SECTION 122BR-1 ENDS  
STA. 580 + 00.00



BRIDGE REMOVAL & CULVERT REPLACEMENT  
EXISTING S.N. 092-0165  
STA. 577 + 74  
R.C. SLAB BRIDGE ON CLOSED ABUTMENTS  
SKEW - 15°  
PROPOSED S.N. 092-0207  
STA. 577 + 74  
DOUBLE 12'X10', SKEW - 15°

SECTION 122BR-1 BEGINS  
STA. 575 + 00.00

TOTAL LENGTH OF SECTION = 500.00 FEET = 0.095 MILES  
NET LENGTH OF SECTION = 500.00 FEET = 0.095 MILES



STATE OF ILLINOIS  
DEPARTMENT OF TRANSPORTATION  
DIVISION OF HIGHWAYS

X SUBMITTED 3/4 20 08  
Joseph W. Crowe  
DEPUTY DIRECTOR OF HIGHWAYS, REGION ENGINEER

May 9, 20 08  
Eric E. Harn  
ENGINEER OF DESIGN AND ENVIRONMENT

May 9, 20 08  
Christine M. Reed  
DIRECTOR OF HIGHWAYS, CHIEF ENGINEER

PRINTED BY THE AUTHORITY  
OF THE STATE OF ILLINOIS

PROJECT ENGINEER: KEVIN TRAPP (217) 465-4181  
DESIGNER: JEFF M. SHERER

CONTRACT NO. 70018