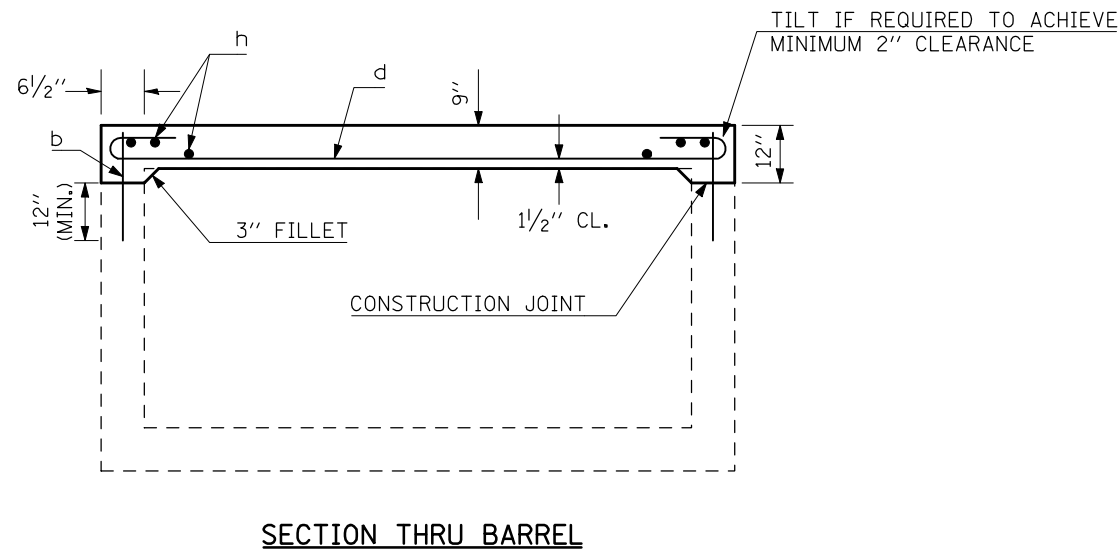


BOX CULVERT SLAB REPAIR



SECTION THRU BARREL

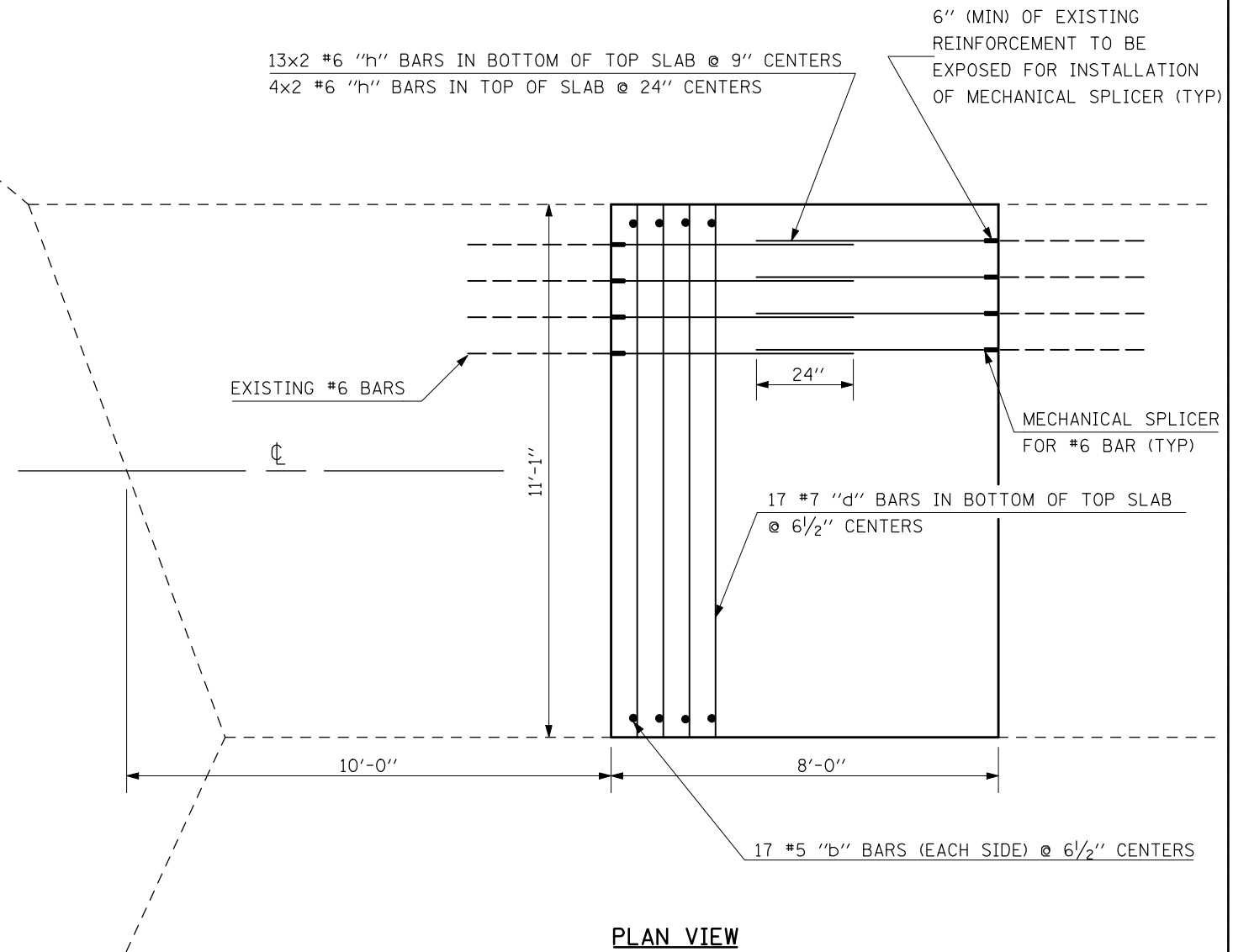
NOTES:

Bar "b" to be epoxy grouted a min. of 12" in accordance with Art. 584 of the standard specifications.

Bar "h" to be removed and disposed of. New "h" bars shall be spliced using mechanical splicers.

BILL OF MATERIALS

Bar	No.	Size	Length
b	34	#5	1'-7"
d	17	#7	16'-7"
h	34	#6	5'-0"
Bar Splicers	Each	34	
Concrete Removal	Cu.Yds.	2.8	
Concrete Box Culverts	Cu.Yds.	2.8	
Reinforcement Bars (Epoxy Coated)	LB.	890.0	



PLAN VIEW

