

S.N. 092-0008 (EB) & S.N. 092-0009 (WB)
 STA 1878+22.00 (F.A.I. 74)
 STA 20+00.00 (F.A.U. 7026 "L" STREET)

2" STL WELDED GAS PIPE
 ILLINOIS POWER COMPANY

STA 1876+97.90 (FAI-74) = 1877+20
 199.5' LT
 RAILROAD TRACKS

12" DUCTILE IRON PIPE
 CONSUMERS ILLINOIS
 WATER COMPANY

6" STL WELDED GAS PIPE
 ILLINOIS POWER COMPANY

1865+00
 140' LT
 EXISTING R.O.W.

☉ F.A.I. ROUTE 74

I-74 WESTBOUND

I-74 EASTBOUND

160'

VAR.

1861+50
 235.8' RT

EXISTING R.O.W.
 1864+00
 140' RT

URBAN LIMITS ± STATION 1867+21.37

PIPE CULVERT, TYPE 2A
 24" x 64' (RCCP)
 RT STA 1874+00.00

EXISTING R.O.W.
 1875+00
 130' RT

BEGIN PROJECT
 STA 1880+00.00

1879+22.33

1878+20
 145' LT

EXISTING R.O.W.

EXISTING R.O.W.

RAMP C

RAMP A

EXISTING R.O.W.

1879+20
 145' RT

10" STL WELDED GAS PIPE
 ILLINOIS POWER COMPANY

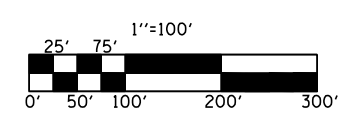
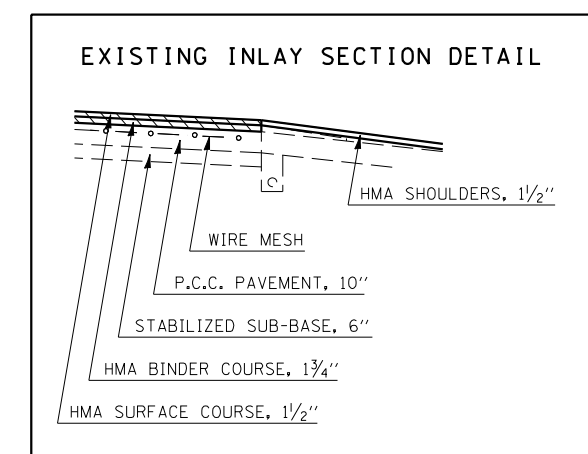
NORTH

NORTH

MATCHLINE STATION 1886+00

SEC. 18, T19N, R11W, 2ND P.M.

EXISTING INLAY SECTIONS



FILE NAME = c:\projects\d570705\70705plans.dgn	USER NAME = collierbw	DESIGNED - RTB	REVISED -	STATE OF ILLINOIS DEPARTMENT OF TRANSPORTATION	PLAN SHEETS			F.A.I. RTE. = 74	SECTION = (92-111)	COUNTY = VERMILION	TOTAL SHEETS = 17	SHEET NO. = 13
	PLOT SCALE = 200.0000' / IN.	DRAWN - JRP	REVISED -		SCALE: NA	SHEET NO. 1 OF 4 SHEETS	STA. 1859+00 TO STA. 1886+00	FED. ROAD DIST. NO.	ILLINOIS FED. AID PROJECT	CONTRACT NO. 70705		
PLOT DATE = 3/13/2008	CHECKED -	DATE - 12-07	REVISED -									