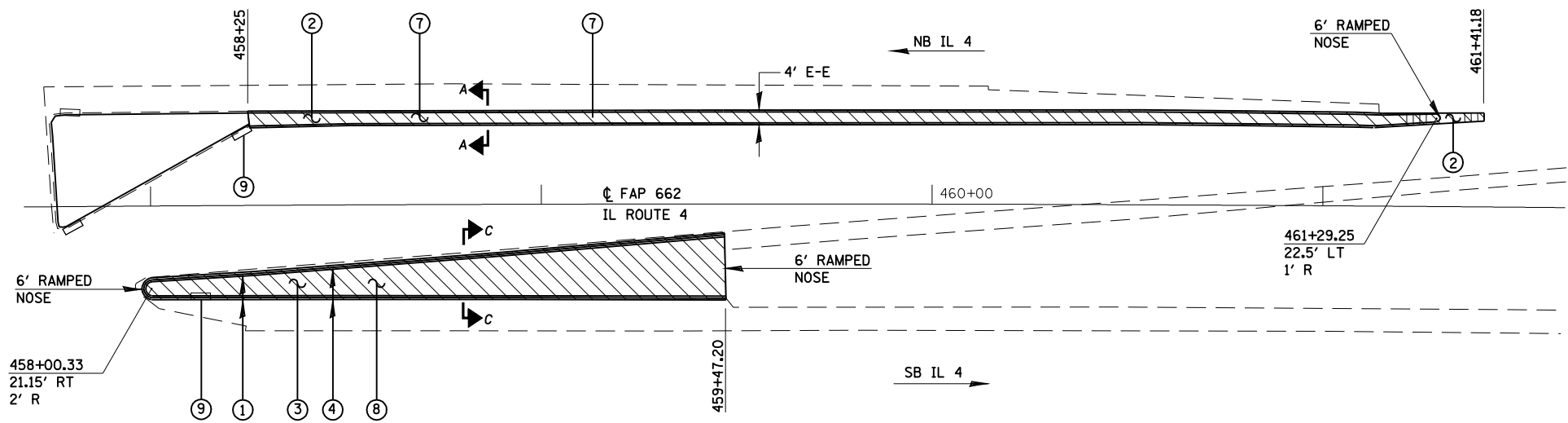
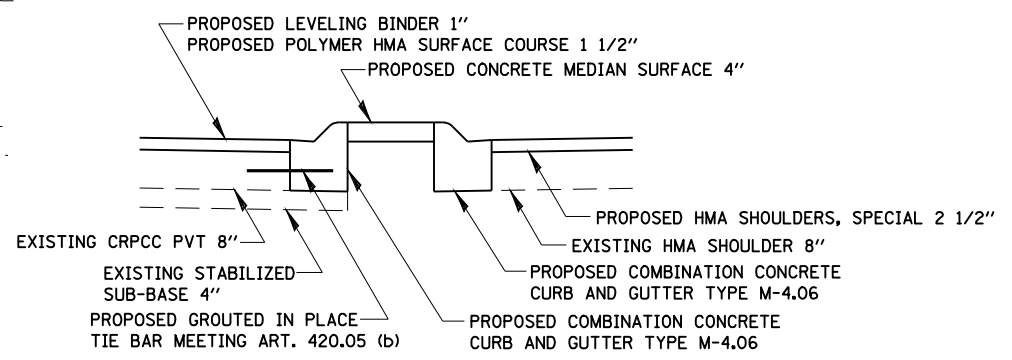




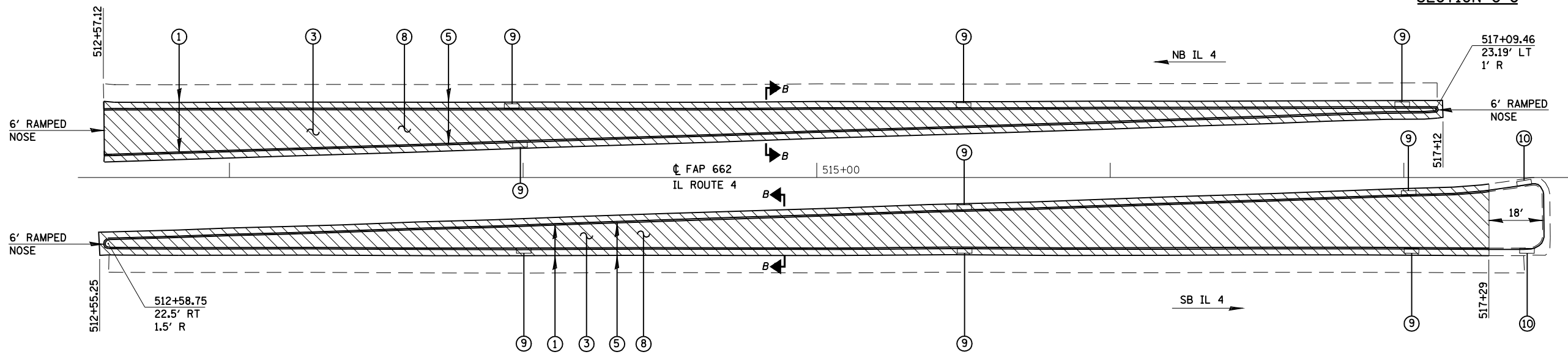
- LEGEND**
- ① COMBINATION CURB AND GUTTER REMOVAL
 - ② MEDIAN REMOVAL
 - ③ CONCRETE MEDIAN SURFACE REMOVAL
 - ④ COMBINATION CONCRETE CURB AND GUTTER TYPE M-4.06
 - ⑤ COMBINATION CONCRETE CURB AND GUTTER TYPE M-4.24
 - ⑦ CONCRETE MEDIAN TYPE SM-6.06
 - ⑧ CONCRETE MEDIAN SURFACE, 4 INCH
 - ⑨ INLETS TO BE ADJUSTED
 - ⑩ INLETS TO BE ADJUSTED WITH NEW TYPE 24 FRAME & GRATE
 - ▨ INDICATES LIMITS OF REMOVAL



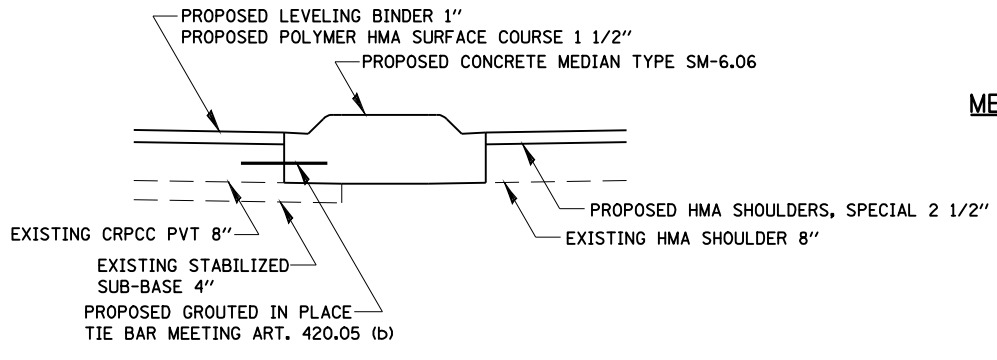
**MEDIAN RECONSTRUCTION-LEFT TURN LANE
N.B. IL 4 TO W.B. LINDBERGH BLVD.**



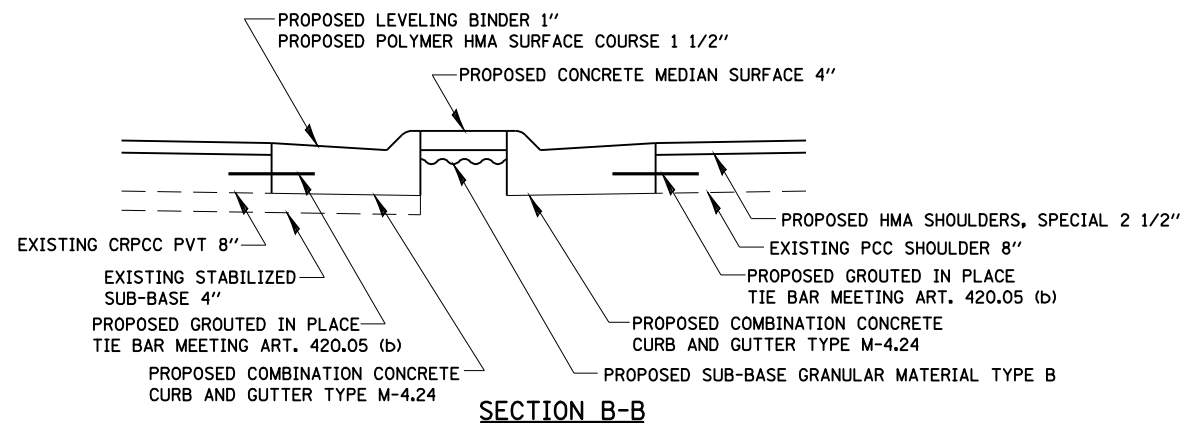
SECTION C-C



**MEDIAN RECONSTRUCTION-LEFT TURN LANE
S.B. IL 4 TO E.B. RECREATION DR.**



SECTION A-A



SECTION B-B

CUMMINS ENGINEERING CORPORATION		JOB - 2200			STATE OF ILLINOIS		MEDIAN RECONSTRUCTION		F.A.P. RTE. 662	SECTION 2-2(RS) & 3-1, 2(RS-10, TS-5)	COUNTY SANGAMON	TOTAL SHEETS 181	SHEET NO. 118
FILE NAME = C:\Projects\d652204\cummins_final\d67289-sht-details4.dgn	USER NAME = laughlin1	DESIGNED - NAK	REVISIONS	REVISIONS	DEPARTMENT OF TRANSPORTATION				CONTRACT NO. 72889		FED. ROAD DIST. NO. ILLINOIS FED. AID PROJECT		
PLOT SCALE = 40.0000' / IN.	CHECKED - NAK	DATE - 3/15/2008	REVISIONS	REVISIONS	SCALE:	SHEET NO.	OF SHEETS	STA.	TO STA.				