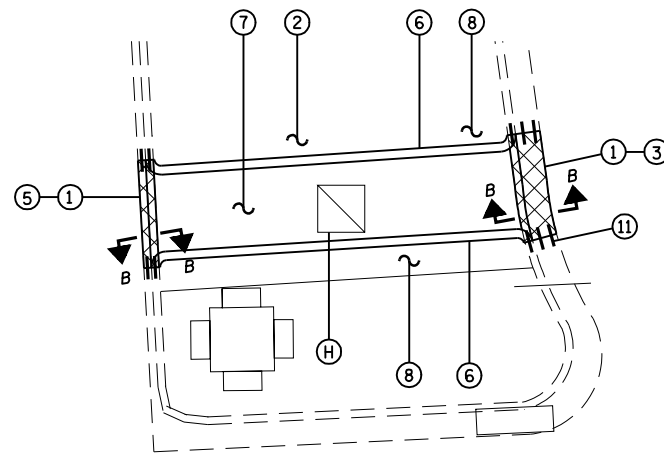
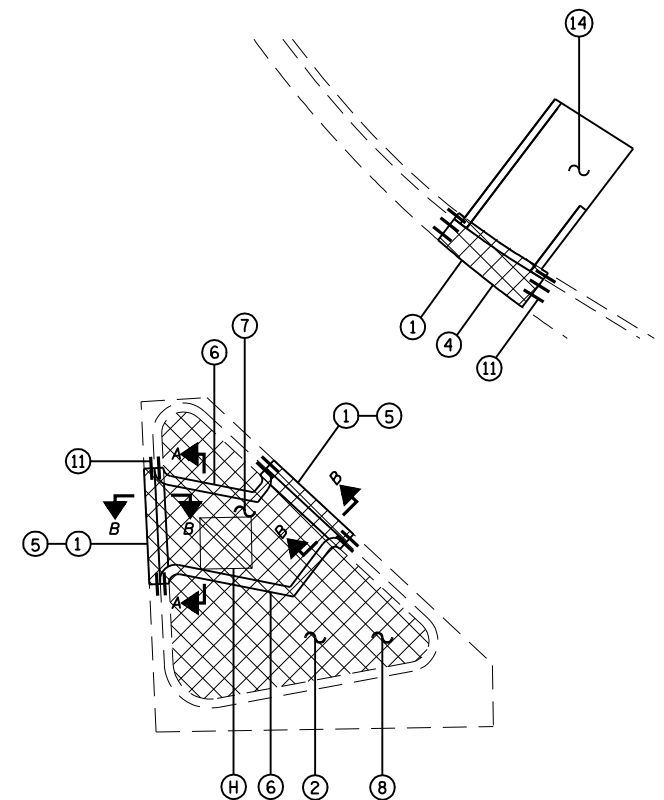


SB VETERANS PARKWAY

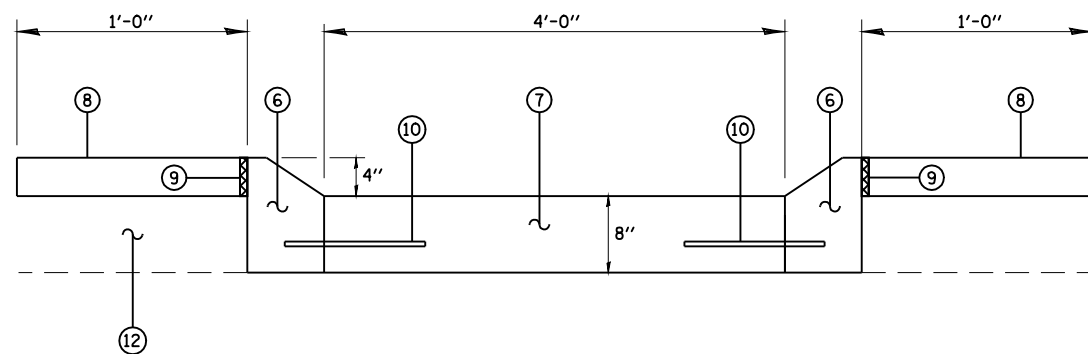


LINDBERGH DR SIDEWALK PLAN

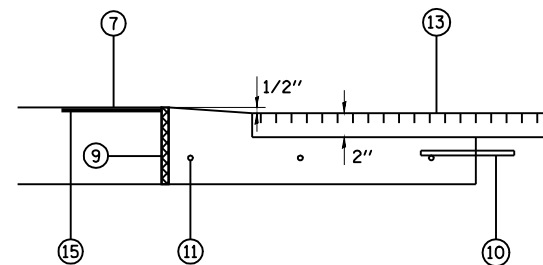
NB VETERANS PARKWAY



LINDBERGH BLVD



SECTION A-A



SECTION B-B

LEGEND

- ① EXIST. COMBINATION CURB AND GUTTER TBR
 - ② EXIST. 4" CONCRETE MEDIAN SURFACE TBR
 - ③ PROP. COMBINATION CURB AND GUTTER TYPE M-6.24
 - ④ PROP. COMBINATION CURB AND GUTTER TYPE B-6.24
 - ⑤ PROP. COMBINATION CURB AND GUTTER TYPE M-6.06
 - ⑥ PROP. CONCRETE CURB TYPE M (SPECIAL)
 - ⑦ PROP. P.C.C. SIDEWALK 8"
 - ⑧ PROP. CONCRETE MEDIAN SURFACE 4"
 - ⑨ PROP. 3/4" PREFORMED EXPANSION JOINT FILLER (TYP.)
 - ⑩ PROP. TIE BAR
 - ⑪ PROP. DOWEL BAR
 - ⑫ PROP. SUB BASE GRANULAR MATERIAL MATERIAL TYPE B
 - ⑬ PROP. HMA RESURFACING
 - ⑭ PROP. P.C.C. SIDEWALK 4"
 - ⑮ PROP. DETECTABLE WARNINGS
 - ⑯ SIDEWALK REMOVAL
 - Ⓗ REBUILD EXISTING SIDEWALKS
- ▨ INDICATES PCC SURFACE REMOVAL-BUTT JOINT OR HOT-MIX ASPHALT SURFACE REMOVAL-BUTT JOINT

NOTE:

1. FOR ADDITIONAL INFORMATION ABOUT CURB AND GUTTER, MEDIAN AND SIDEWALK SEE STD. 424001, 606001, & 606301
2. UNLESS OTHERWISE SHOWN ALL RADII ARE 1'

CUMMINS ENGINEERING CORPORATION		JOB - 2200
USER NAME = laughlin1		FILE - sht-details4.dgn
FILE NAME = C:\Projects\d652204\cummins_final\d67289-sht-details4.dgn	DESIGNED - NAK	REVISED -
PLOT SCALE = 40.0000' / IN.	DRAWN - AJH	REVISED -
PLOT DATE = Mar-18-2008 11:43:07AM	CHECKED - NAK	REVISED -
	DATE - 3/15/2008	REVISED -

**STATE OF ILLINOIS
DEPARTMENT OF TRANSPORTATION**

CROSSWALK & ISLAND DETAILS

SCALE: SHEET NO. OF SHEETS STA. TO STA.

F.A.P. RTE.	SECTION	COUNTY	TOTAL SHEETS	SHEET NO.
662	2-2(RS) & 3-1, 2(RS-10, TS-5)	SANGAMON	181	122
FED. ROAD DIST. NO. ILLINOIS FED. AID PROJECT			CONTRACT NO. 72889	