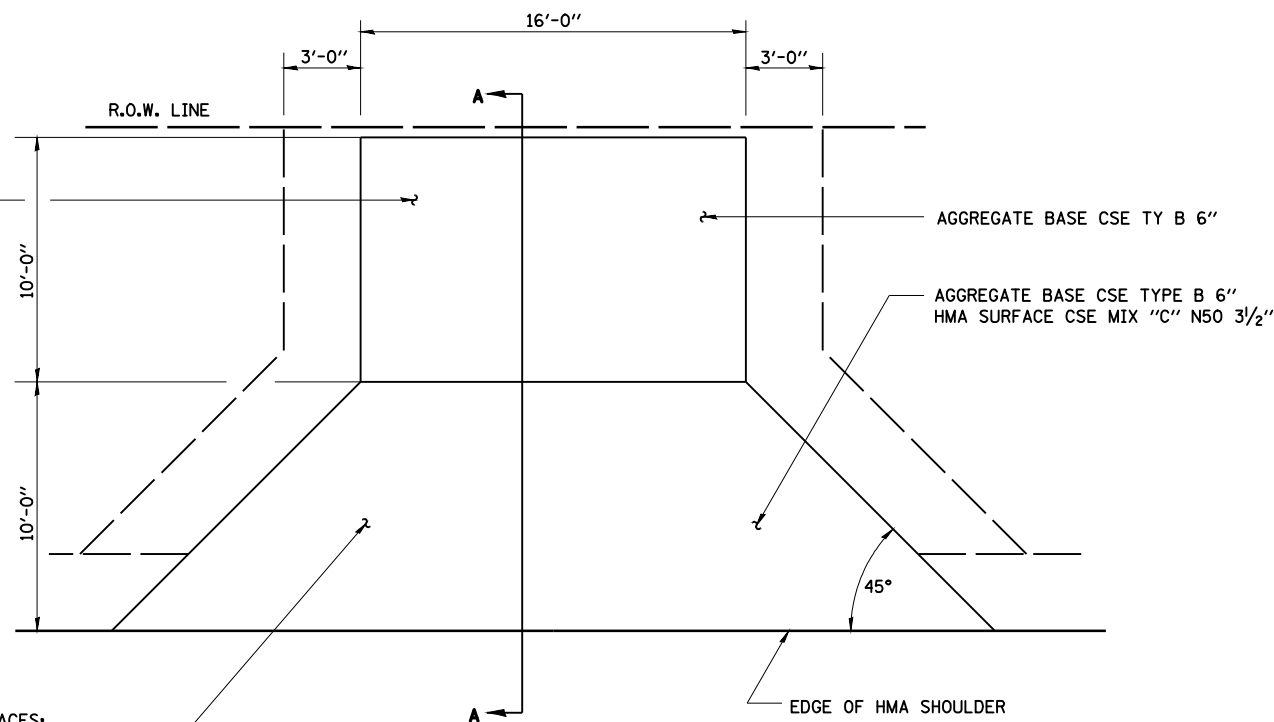


MATCH EX SURFACE TYPE (AGGREGATE OR BETTER)
 FOR EX AGGREGATE SURFACES:
 PR AGGREGATE BASE COURSE TYPE B, 150mm (6") - PE
 FOR EX HMA CONC SURFACES:
 PR HMA SURFACE REMOVAL-BUTT JOINT
 PR AGGREGATE BASE COURSE TYPE B, 150mm (6") - PE
 PR HMA SURF CSE MIX "C" N50 90mm (3 1/2") - PE

FOR EX AGGREGATE OR HMA CONC SURFACES:
 PR HMA SURFACE REMOVAL-BUTT JOINT (IF APPLICABLE)
 PR AGGREGATE BASE COURSE TYPE B, 150mm (6") &
 PR HMA SURF CSE MIX "C" N50 90mm (3 1/2") - PE



GENERAL NOTES:

THE RESIDENT ENGINEER WILL DETERMINE THE EXACT TYPE OF IMPROVEMENT TO BE COMPLETED FOR ALL ENTRANCES, SIDEROADS AND MAILBOX TURNOUTS ON THIS PROJECT.

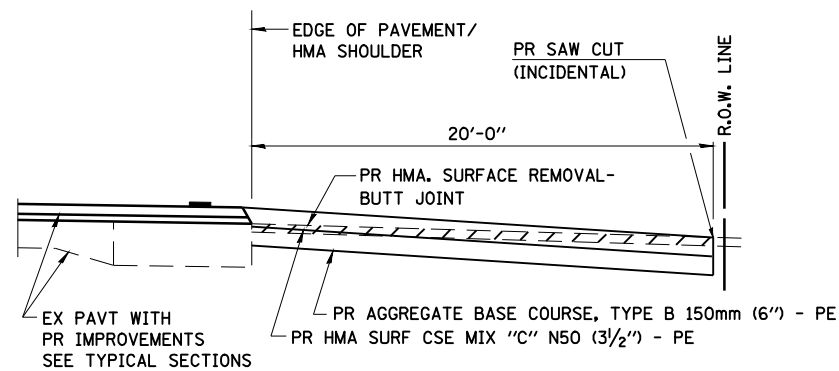
THE PLAN DETAILS AND SCHEDULES SHOULD BE USED AS A GUIDE FOR THE ENGINEER TO IMPLEMENT THE FINAL DESIGN. THE ENGINEER MAY DECIDE TO SALVAGE PORTIONS OF THE EXISTING ENTRANCE PAVEMENT STRUCTURE; THEREFORE, REDUCING PAY ITEM QUANTITIES. NO ADDITIONAL PAYMENT WILL BE ALLOWED FOR THIS REDUCTION IN QUANTITIES.

ANY WORK THE ENGINEER REQUIRES WHICH IS NOT COVERED BY A PAY ITEM CONTAINED IN THE PLANS WILL BE PAID FOR IN ACCORDANCE WITH ARTICLE 109.04 OF THE STANDARD SPECIFICATIONS.

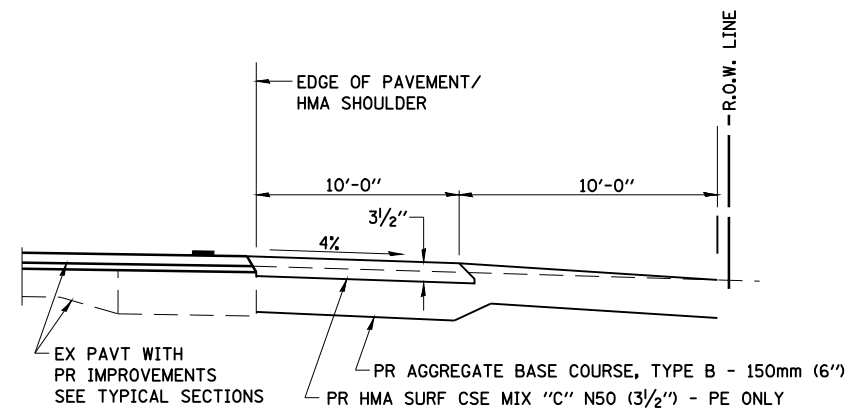
HMA CONCRETE REQUIRED TO CONSTRUCT THE ENTRANCES SHALL BE IN ACCORDANCE WITH THE APPLICABLE PORTIONS OF SECTION 406 AND 408 OF THE STANDARD SPECIFICATIONS AND AS DIRECTED BY THE ENGINEER.

WHEN THE HMA CONCRETE PROPOSED FOR THE IMPROVEMENT IS THICKER THAN 75 mm (3 INCHES) AND REQUIRE PLACEMENT IN MORE THAN ONE LIFT. THE BOTTOM LIFT(S) SHALL MEET THE REQUIREMENTS OF HMA BASE COURSE IN SECTION 406 OF THE STANDARD SPECIFICATIONS AND THE TOP LIFT OF 50 mm (2 INCHES) SHALL MEET THE REQUIREMENTS OF HMA CONCRETE SURFACE COURSE, SUPERPAVE.

THIS WORK WILL BE PAID FOR IN ACCORDANCE WITH SECTIONS 351, 358, 408, 423 AND 440 OF THE STANDARD SPECIFICATIONS.



SECTION A-A FOR EX HMA PE & CE



SECTION A-A FOR EX EARTH/AGGREGATE FE & PE

ENTRANCE IMPROVEMENT SCHEDULE FOR RURAL / URBAN "3R" PROJECTS								
LOCATION	TYPE OF ENTRANCE	EX MATERIAL TYPE	WIDTH	LENGTH (FROM EDGE OF HMA SHLD TO LIMITS OF IMPROVEMENT)	HMA SURF. REMOVAL-BUTT JOINT	AGGREGATE BASE COURSE TY - B	BIT (P. C.)	HMA SURF. CSE MIX "C" N50
			FOOT	FOOT	SQ. YD.	TON	TON	TON
LT STA 597+89.5	RURAL PE	HMA	16	20	47	16	0.06	9.2
RT STA 609+67	RURAL PE	AGG	16	20		16	0.04	5.7
RT STA 639+22.5	RURAL PE	AGG	16	20		16	0.04	5.7
TOTAL =					47	48	0.14	20.6

3 FOOT WIDE AGGREGATE SHOULDERS SHALL BE CONSTRUCTED THROUGH EXISTING FIELD ENTRANCES

FILE NAME =	USER NAME = laughlinr1	DESIGNED -	REVISED - 2/19/03 (JCN)
C:\Projects\d652204\cummins_final\d67289-sh-ent.dgn		DRAWN - CADD	REVISED - 4/01/04 (JCN)
	PLOT SCALE = 40.000' / IN.	CHECKED - JCN	REVISED - 8/01/07 (JCN)
	PLOT DATE = Mar-18-2008 11:43:17AM	DATE - FEBRUARY 23, 1999	REVISED -

**STATE OF ILLINOIS
 DEPARTMENT OF TRANSPORTATION**

ENTRANCE DETAILS

SCALE: SHEET NO. 1 OF 3 SHEETS STA. TO STA.

F.A.P. RTE.	SECTION	COUNTY	TOTAL SHEETS	SHEET NO.
662	2-2(RS) & 3-1, 2(RS-10, TS-5)	SANGAMON	181	127
CONTRACT NO. 72889				
FED. ROAD DIST. NO. ILLINOIS FED. AID PROJECT				