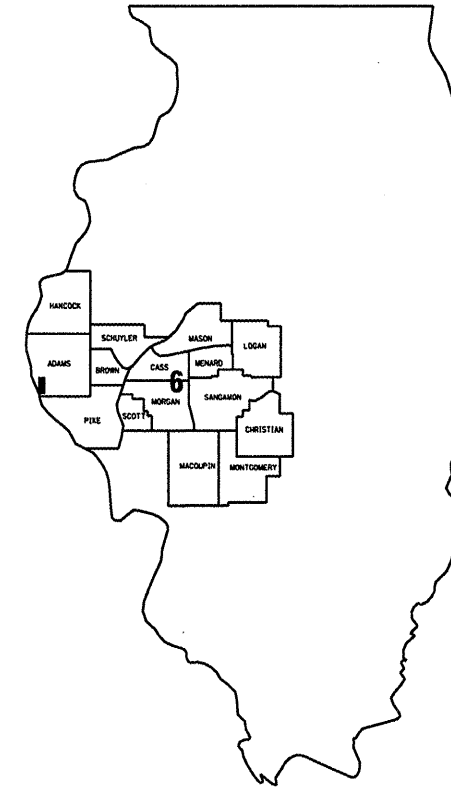


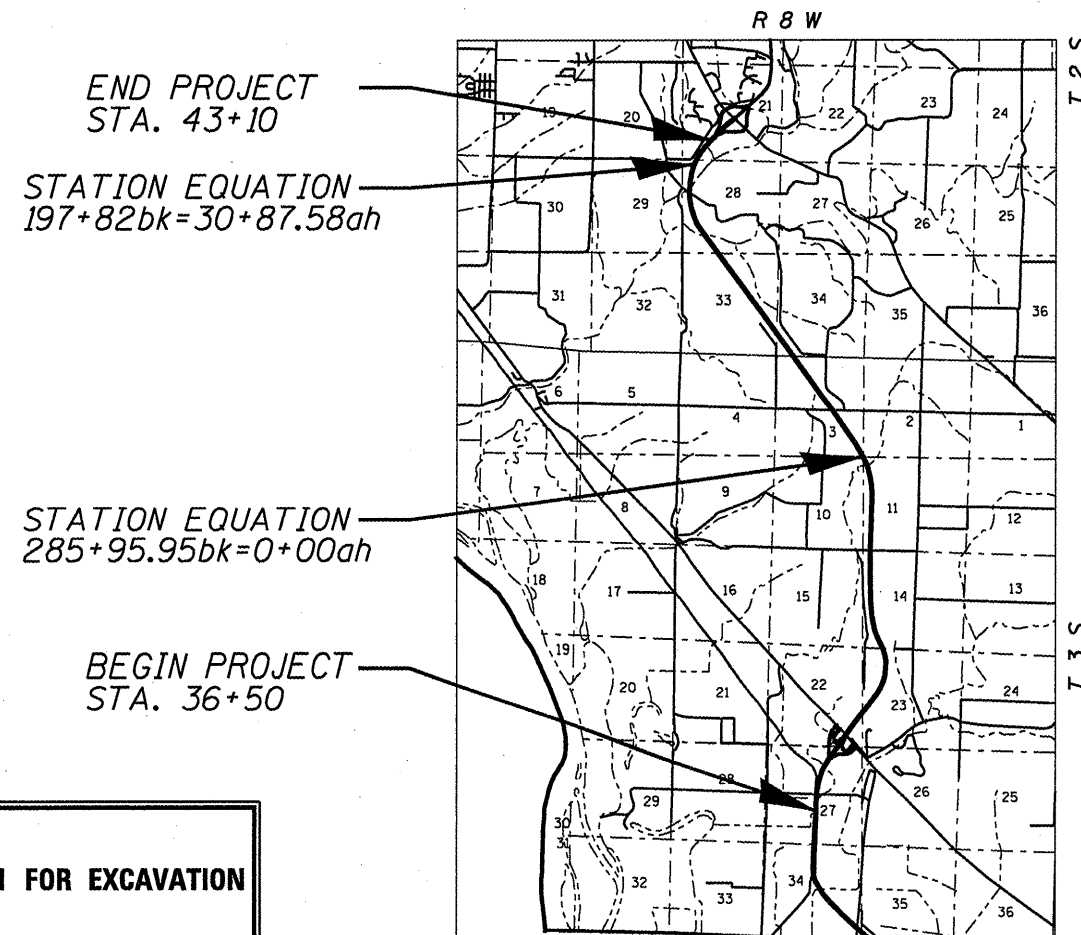
FOR INDEX OF SHEETS AND HIGHWAY STANDARDS, SEE SHEET 2.

STATE OF ILLINOIS
DEPARTMENT OF TRANSPORTATION
DIVISION OF HIGHWAYS
**PLANS FOR PROPOSED
CONTRACT MAINTENANCE
FAI ROUTE 172 (I-172)
SECTION D6 PATCHING 2009
ADAMS COUNTY
C96-062-08 / D96-062-08**

CONTRACT: 72B97
SHEET 1 OF 6



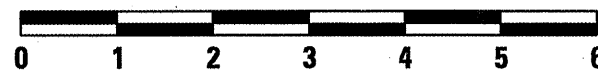
LOCATION OF SECTION INDICATED THUS: ■



J. U. L. I. E.
JOINT UTILITY LOCATION INFORMATION FOR EXCAVATION
1-800-892-0123

PLANS & CONTRACT TECHNICIAN: TIMOTHY SHARP
PHONE: (217) 782-7743

NET LTH OF SEC 46,240.37 FT = 8.758 MILES



SCALE: 1" = 2 MILES

STATE OF ILLINOIS
DEPARTMENT OF TRANSPORTATION
DIVISION OF HIGHWAYS

SUBMITTED FEB 29 2008

Christine M. Reed
DEPUTY DIRECTOR OF HIGHWAYS, REGION FOUR ENGINEER

May 9 2008
Eric E. Harn
ENGINEER OF DESIGN AND ENVIRONMENT
Interim

May 9 2008
Christine M. Reed
DIRECTOR, DIVISION OF HIGHWAYS

CONTRACT NO. 72B97

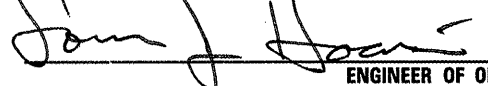
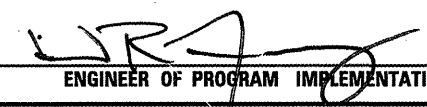

PRINTED BY AUTHORITY OF THE STATE OF ILLINOIS

STANDARDS

INDEX OF SHEETS

1	COVER SHEET
2	INDEX, STANDARDS, & SIGNATURES
3	SUMMARY OF QUANTITIES
4	TYPICAL SECTIONS
5-6	PATCHING SCHEDULE

442001-04
701101-01
701106-01
701400-02
701401-04
701406-04
701411-04
701901

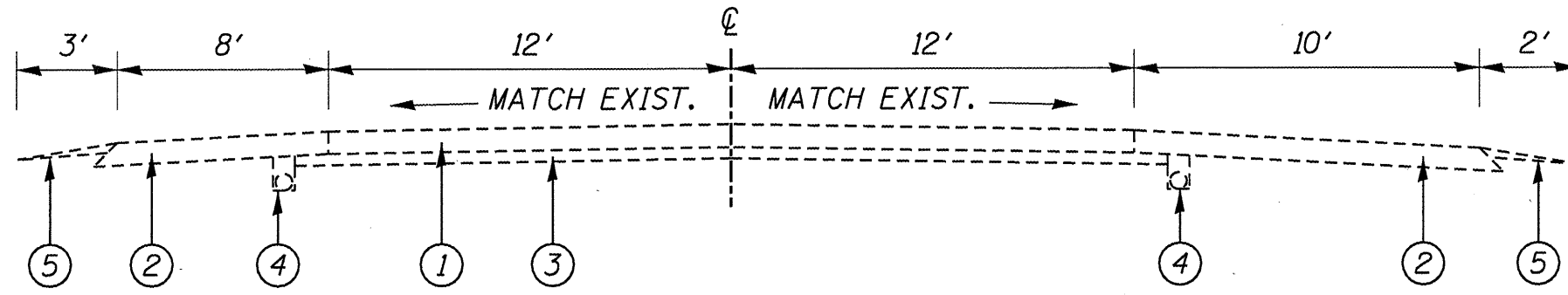
STATE OF ILLINOIS DEPARTMENT OF TRANSPORTATION DIVISION OF HIGHWAYS DISTRICT 6		
EXAMINED	Feb 29	20 08
 ENGINEER OF OPERATIONS		
EXAMINED	FEB 29	20 08
 ENGINEER OF PROGRAM IMPLEMENTATION		
EXAMINED	FEB 29	20 08
 ENGINEER OF PROGRAM DEVELOPMENT		

INDEX, STDS, & SIGNATURES
FAI 172 (I-172)
SECTION D6 PATCHING 2009
ADAMS COUNTY

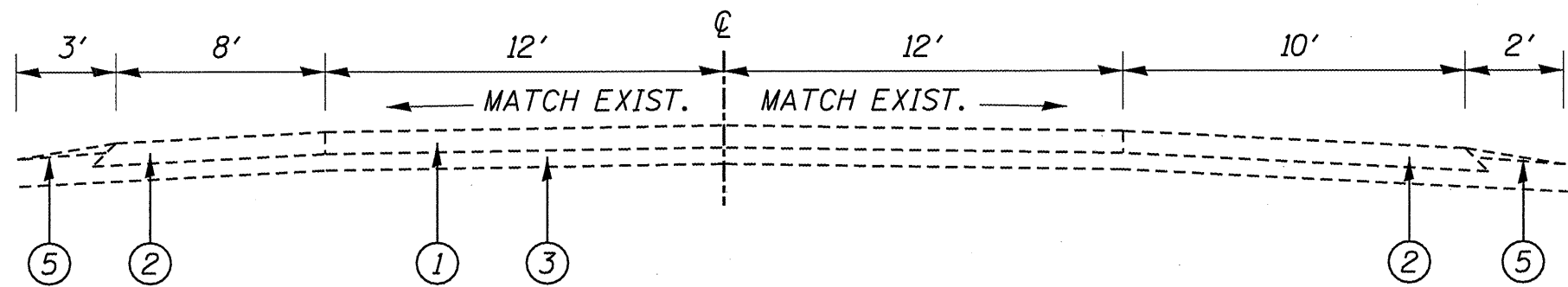
S U M M A R Y O F Q U A N T I T I E S

CODE NO.	ITEM	UNIT	100% STATE
			J000
			TOTAL QTY
44200529	CLASS A PATCHES, TYPE II, 8 INCH	SQ YD	861
44200533	CLASS A PATCHES, TYPE III, 8 INCH	SQ YD	251
44200535	CLASS A PATCHES, TYPE IV, 8 INCH	SQ YD	330
44213000	PATCHING REINFORCEMENT	SQ YD	1,442
44213200	SAW CUTS	FOOT	7,706
67100100	MOBILIZATION	L SUM	1
70100420	TRAFFIC CONTROL AND PROTECTION, STANDARD 701411	EACH	1
70100700	TRAFFIC CONTROL AND PROTECTION, STANDARD 701406	L SUM	1
70100800	TRAFFIC CONTROL AND PROTECTION, STANDARD 701401	L SUM	1
70103815	TRAFFIC CONTROL SURVEILLANCE	CAL DA	10
Z0075300	TIE BARS	EACH	125

QUANTITIES
FAI 172 (I-172)
SECTION D6 PATCHING 2009
ADAMS COUNTY



I-172 - NORMAL SECTION
NORTHBOUND LANE



I-172 - ROCK CUT SECTION
NORTHBOUND LANE

- ① EXISTING CRC PAVEMENT, 8"
- ② EXISTING H.M.A. SHOULDER, 8"
- ③ EXISTING STABILIZED SUB-BASE, 4-6"
- ④ EXISTING PIPE UNDERDRAIN
- ⑤ EXISTING AGGREGATE SHOULDER

TYPICAL SECTIONS
FAI 172 (I-172)
SECTION D6 PATCHING 2009
ADAMS COUNTY

PATCHING SCHEDULE

APPROX. STA	LOCATION	LENGTH (FT)	WIDTH (FT)	CL A PATCHES TY II, 8" (SQ YD)	CL A PATCHES TY III, 8" (SQ YD)	CL A PATCHES TY IV, 8" (SQ YD)	TIE BARS (EACH)	PATCHING REINFORCEMENT (SQ YD)	SAW CUTS (FT)
36+50	SBDL	8	12	10.67				10.67	64
48+30	SBDL	5	12	6.67				6.67	58
48+40	SBDL	5	12	6.67				6.67	58
48+70	SBDL	5	12	6.67				6.67	58
48+80	SBDL	5	12	6.67				6.67	58
50+50	SBDL	5	12	6.67				6.67	58
70+20	SBDL	5	12	6.67				6.67	58
70+50	SBDL	5	12	6.67				6.67	58
73+00	SBDL	5	12	6.67				6.67	58
74+00	SBDL	5	12	6.67				6.67	58
74+30	SBDL	5	12	6.67				6.67	58
76+50	SBDL	5	12	6.67				6.67	58
80+20	SBDL	5	12	6.67				6.67	58
80+50	SBDL	16	12		21.33			21.33	80
83+00	SBDL	5	12	6.67				6.67	58
91+00	SBDL	8	12	10.67				10.67	64
91+30	SBDL	5	12	6.67				6.67	58
94+00	SBDL	5	12	6.67				6.67	58
97+10	SBDL	5	12	6.67				6.67	58
113+80	SBDL	5	12	6.67				6.67	58
132+60	SBDL	8	12	10.67				10.67	64
133+10	SBDL	16	12		21.33			21.33	80
133+70	SBDL	5	12	6.67				6.67	58
134+70	SBDL	26	12			34.67	13	34.67	100
137+50	SBDL	5	12	6.67				6.67	58
197+90	SBDL	5	12	6.67				6.67	58
141+00	SBDL	10	12	13.33				13.33	68
146+70	SBDL	15	12		20.00			20.00	78
147+20	SBDL	10	12	13.33				13.33	68
148+20	SBDL	62	12			82.67	31	82.67	172
148+80	SBDL	16	12		21.33			21.33	80
155+50	SBDL	5	12	6.67				6.67	58
158+95	SBDL	6	12	8.00				8.00	60
159+05	SBDL	5	12	6.67				6.67	58
162+70	SBDL	30	12			40.00	15	40.00	108
163+00	SBDL	5	12	6.67				6.67	58
164+00	SBDL	5	12	6.67				6.67	58
165+50	SBDL	8	12	10.67				10.67	64
STA. EQU.	285+95.95bk+00+00ah								
2+10	SBDL	12	12		16.00			16.00	72
25+80	SBDL	8	12	10.67				10.67	64
69+50	SBDL	0	12	13.33				13.33	68
117+20	SBDL	8	12	10.67				10.67	64
121+30	SBDL	12	12		16.00			16.00	72
122+00	SBDL	5	12	6.67				6.67	58
131+80	SBDL	5	12	6.67				6.67	58
132+30	SBDL	8	12	10.67				10.67	64
134+40	SBDL	5	12	6.67				6.67	58
135+80	SBDL	8	12	10.67				10.67	64
139+80	SBDL	5	12	6.67				6.67	58
140+50	SBDL	5	12	6.67				6.67	58
STA. EQU.	197+82.00bk+30+87.58ah								
33+80	SBDL	8	12	10.67				10.67	64
35+20	SBDL	5	12	6.67				6.67	58
37+50	SBDL	5	12	6.67				6.67	58
43+10	SBDL	5	12	6.67				6.67	58
TOTAL: SOUTHBOUND LANES				357.33	116.00	157.33	59	630.67	3,538
80+00	NBDL	5	12	6.67				6.67	58
80+70	NBDL	5	12	6.67				6.67	58
92+30	NBDL	8	12	10.67				10.67	64
92+50	NBDL	5	12	6.67				6.67	58
106+20	NBDL	5	12	6.67				6.67	58
106+30	NBDL	5	12	6.67				6.67	58
109+00	NBDL	12	12		16.00			16.00	72
110+40	NBDL	14	12		18.67			18.87	76

NOTE:

* AN ADDITIONAL 10% OF THE ESTIMATED PATCHING QUANTITIES WAS ADDED TO BE USED AT THE DISCRETION OF THE ENGINEER.

PATCHING SCHEDULE
FAI 172 (I-172)
SECTION D6 PATCHING 2009
ADAMS COUNTY

PATCHING SCHEDULE

CONTRACT: 72B97
SHEET 6 OF 6

APPROX. STA	LOCATION	LENGTH (FT)	WIDTH (FT)	CL A PATCHES TY II, 8" (SQ YD)	CL A PATCHES TY III, 8" (SQ YD)	CL A PATCHES TY IV, 8" (SQ YD)	TIE BARS (EACH)	PATCHING REINFORCEMENT (SQ YD)@6.67	SAW CUTS (FT)
111+00	NBDL	5	12	6.67				6.67	58
113+30	NBDL	5	12	6.67				6.67	58
130+10	NBDL	5	12	6.67				6.67	58
146+50	NBDL	5	12	6.67				6.67	58
147+00	NBDL	5	12	6.67				6.67	58
147+50	NBDL	5	12	6.67				6.67	58
147+75	NBDL	5	12	6.67				6.67	58
147+85	NBDL	5	12	6.67				6.67	58
148+10	NBDL	6	12	8.00				8.00	60
148+40	NBDL	5	12	6.67				6.67	58
148+50	NBDL	5	12	6.67				6.67	58
149+00	NBDL	30	12			40.00	15	40.00	108
149+50	NBDL	15	12		20.00			20.00	78
150+00	NBDL	34	12			45.33	17	45.33	116
150+80	NBDL	5	12	6.67				6.67	58
151+20	NBDL	12	12		16.00			16.00	72
153+70	NBDL	8	12	10.67				10.67	64
154+10	NBDL	8	12	10.67				10.67	64
154+80	NBDL	8	12	10.67				10.67	64
159+00	NBDL	6	12	8.00				8.00	60
159+80	NBDL	5	12	6.67				6.67	58
161+80	NBDL	5	12	6.67				6.67	58
163+30	NBDL	5	12	6.67				6.67	58
163+70	NBDL	5	12	6.67				6.67	58
166+40	NBDL	6	12	8.00				8.00	60
166+80	NBDL	5	12	6.67				6.67	58
167+30	NBDL	8	12	10.67				10.67	64
171+00	NBDL	7	12	9.33				9.33	62
178+50	NBDL	5	12	6.67				6.67	58
178+90	NBDL	10	12	13.33				13.33	68
183+00	NBDL	6	12	8.00				8.00	60
186+30	NBDL	5	12	6.67				6.67	58
187+00	NBDL	5	12	6.67				6.67	58
STA. EQU.									
132+55	NBDL	10	12	13.33				13.33	68
133+00	NBDL	6	12	8.00				8.00	60
133+80	NBDL	6	12	8.00				8.00	60
134+20	NBDL	6	12	8.00				8.00	60
175+80	NBDL	20	12			26.67	10	26.67	88
176+50	NBDL	5	12	6.67				6.67	58
184+20	NBDL	8	12	10.67				10.67	64
189+10	NBDL	5	12	6.67				6.67	58
189+90	NBDL	5	12	6.67				6.67	58
190+05	NBDL	5	12	6.67				6.67	58
190+20	NBDL	14	12		18.67			18.67	76
191+20	NBDL	6	12	8.00				8.00	60
192+60	NBDL	6	12	8.00				8.00	60
193+00	NBDL	25	12			33.33	13	33.33	98
193+90	NBDL	5	12	6.67				6.67	58
194+50	NBDL	15	12		20.00			20.00	78
195+80	NBDL	10	12	13.33				13.33	68
196+70	NBDL	6	12	8.00				8.00	60
197+00	NBDL	8	12	10.67				10.67	64
197+10	NBDL	5	12	6.67				6.67	58
STA. EQU.									
33+00	NBDL	5	12	6.67				6.67	58
33+30	NBDL	5	12	6.67				6.67	58
36+00	NBDL	6	12	8.00				8.00	60
TOTAL: NORTHBOUND LANES				425.33	109.33	145.33	55	680.00	4,092
TOTAL: SOUTHBOUND LANES				357.33	116.00	157.33	59	630.67	3,538
TOTAL: SOUTHBOUND AND SOUTHBOUND LANES				782.67	225.33	302.67	114	1,310.67	7,630
+ 10% *				78.33	25.67	30.33	11	131.33	76
GRAND TOTALS:				861.00	251.00	330.00	125	1,442.00	7,706

NOTE:

* AN ADDITIONAL 10% OF THE ESTIMATED PATCHING QUANTITIES WAS ADDED TO BE BE USED AT THE DISCRETION OF THE ENGINEER.

PATCHING SCHEDULE
FAI 172 (I-172)
SECTION D6 PATCHING 2009
ADAMS COUNTY