

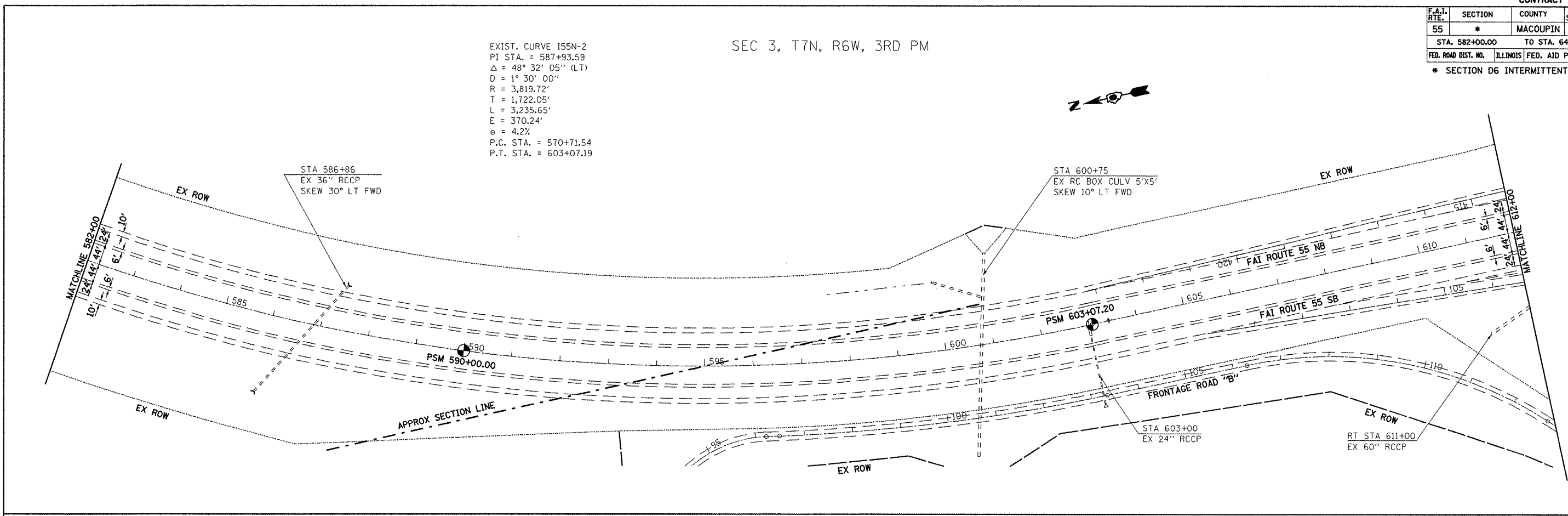
CONTRACT 72C03

F.A.I. RTE.	SECTION	COUNTY	TOTAL SHEETS	SHEET NO.
55	*	MACOUPIN	18	11
STA. 582+00.00		TO STA. 642+00.00		
FED. ROAD DIST. NO.		ILLINOIS FED. AID PROJECT		

* SECTION D6 INTERMITTENT RS 2009

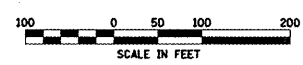
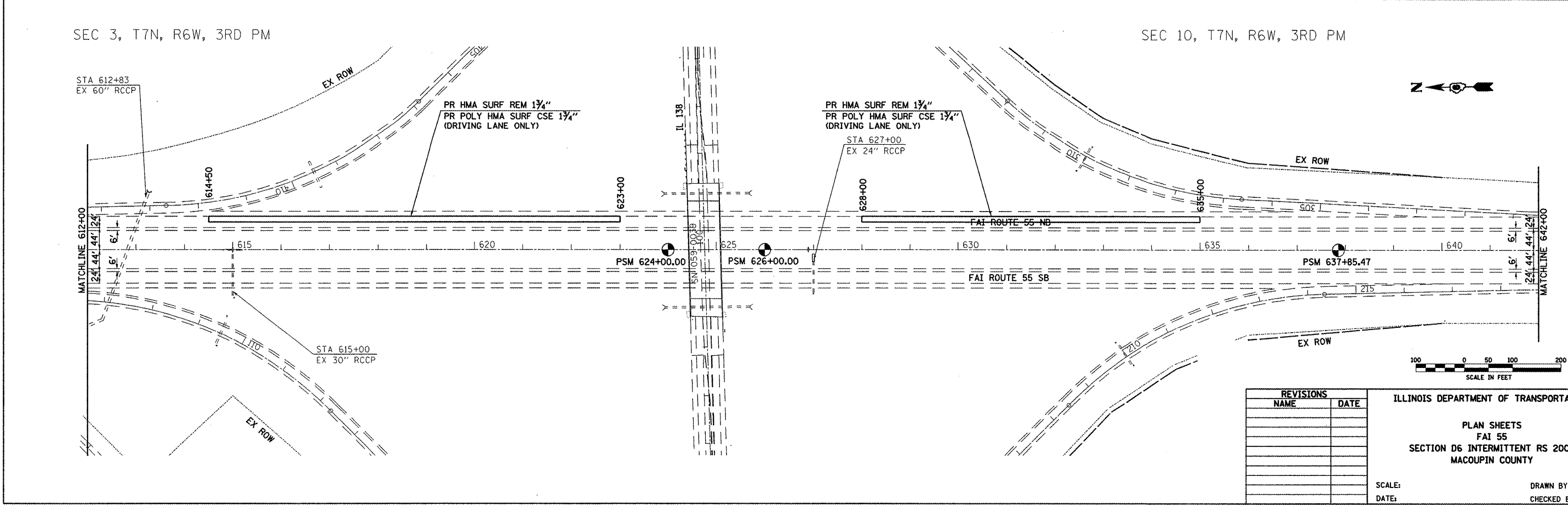
SEC 3, T7N, R6W, 3RD PM

EXIST. CURVE I55N-2
 PI STA. = 587+93.59
 $\Delta = 48^\circ 32' 05''$ (LT)
 $D = 1^\circ 30' 00''$
 $R = 3,819.72'$
 $T = 1,722.05'$
 $L = 3,235.65'$
 $E = 370.24'$
 $e = 4.2\%$
 P.C. STA. = 570+71.54
 P.T. STA. = 603+07.19



SEC 3, T7N, R6W, 3RD PM

SEC 10, T7N, R6W, 3RD PM



REVISIONS	
NAME	DATE

ILLINOIS DEPARTMENT OF TRANSPORTATION
 PLAN SHEETS
 FAI 55
 SECTION D6 INTERMITTENT RS 2009
 MACOUPIN COUNTY
 SCALE: _____ DRAWN BY _____
 DATE: _____ CHECKED BY _____

C:\Projects\6872c03\sheet10b.dgn
 Apr-01-2009 07:36:01AM
 +REF01