

F.A.P. RTE.	SECTION	COUNTY	TOTAL SHEETS	SHEET NO.
774	(107Z)RS-3	EFFINGHAM	10	1
FED. ROAD DIST. NO.	ILLINOIS	CONTRACT NO. 74135		

STATE OF ILLINOIS  
DEPARTMENT OF TRANSPORTATION  
DIVISION OF HIGHWAYS

**PROPOSED  
HIGHWAY PLANS**

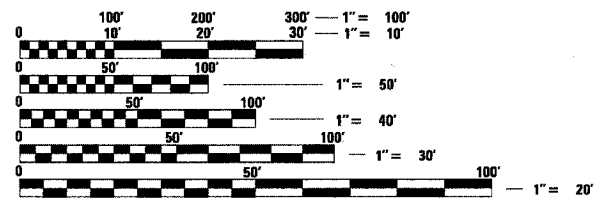
FAP ROUTE 774 (IL 33)  
SECTION (107Z)RS-3  
EFFINGHAM COUNTY  
C-97-010-06  
PROJECT: F-0774(030)



FOR INDEX OF SHEETS, SEE SHEET NO. 2

STATION EQUATION:  
STA. 1202 + 05.29 (BK) = STA. 49 + 20.18 (AH)

2007 ADT = 27,000



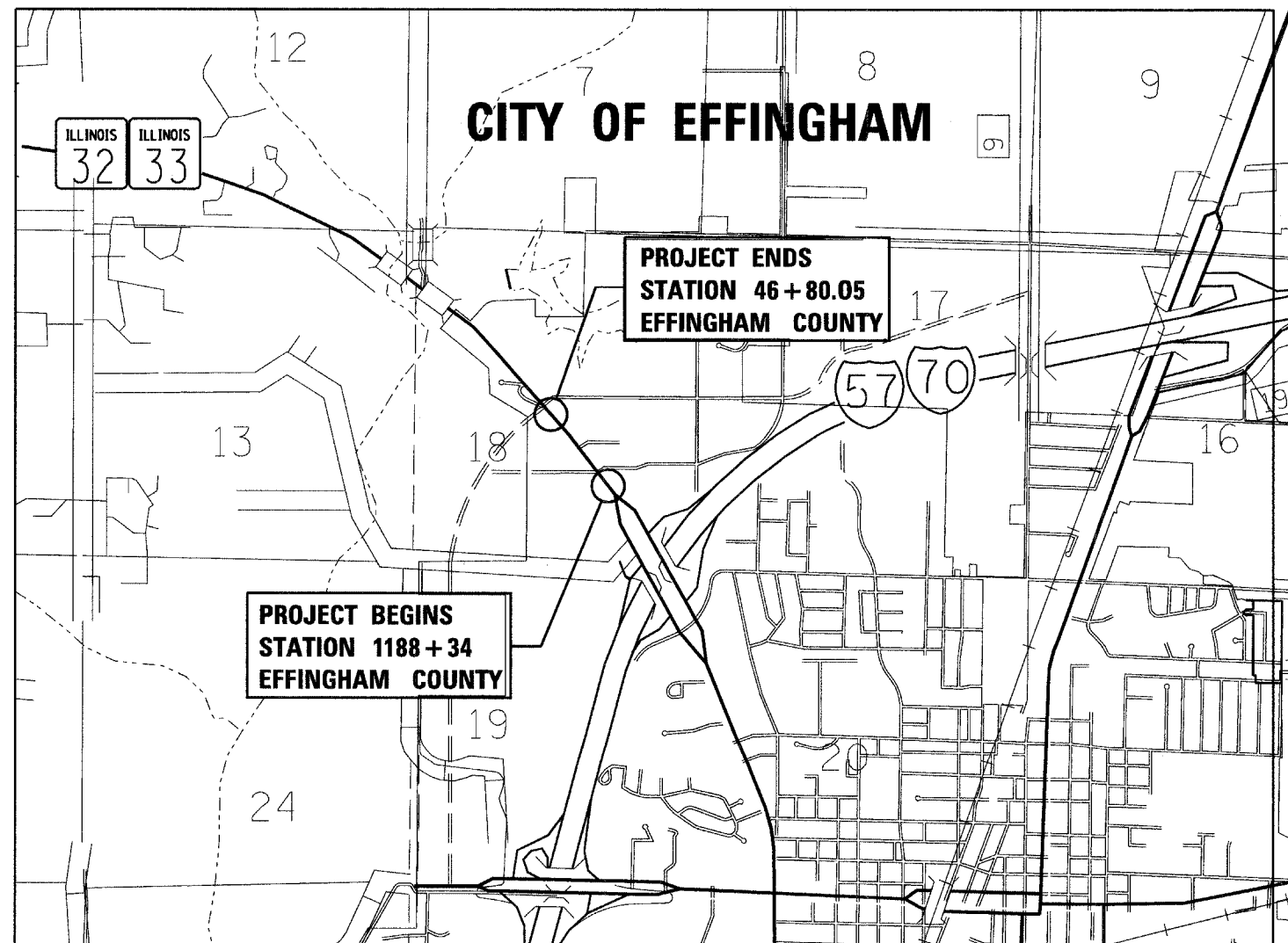
FULL SIZE PLANS HAVE BEEN PREPARED USING STANDARD ENGINEERING SCALES. REDUCED SIZED PLANS WILL NOT CONFORM TO STANDARD SCALES. IN MAKING MEASUREMENTS ON REDUCED PLANS, THE ABOVE SCALES MAY BE USED.

J.U.L.I.E.  
JOINT UTILITY LOCATION INFORMATION FOR EXCAVATION  
1-800-892-0123  
OR 811

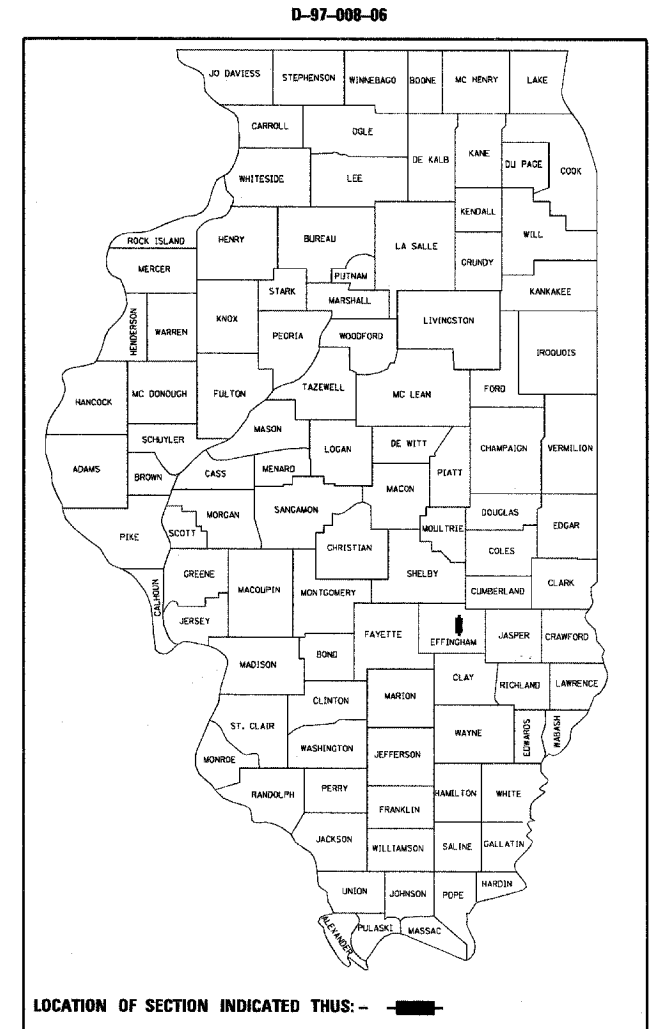
TOWNSHIP: SUMMIT

PROJECT ENGINEER: TOM ROMAN  
PROJECT MANAGER: MYRA OLTMAN

CONTRACT NO. 74135



GROSS LENGTH OF PROJECT = 1611.42 FT. = 0.30 MILE  
NET LENGTH OF PROJECT = 1611.42 FT. = 0.30 MILE



STATE OF ILLINOIS  
DEPARTMENT OF TRANSPORTATION  
DIVISION OF HIGHWAYS

SUBMITTED March 19, 20 08

Christine M. Reed  
DEPUTY DIRECTOR OF HIGHWAYS, REGION ENGINEER

May 9, 20 08  
Eric E. Harnett  
ENGINEER OF DESIGN AND ENVIRONMENT

May 9, 20 08  
Christine M. Reed  
DIRECTOR OF HIGHWAYS, CHIEF ENGINEER

**PRINTED BY THE AUTHORITY  
OF THE STATE OF ILLINOIS**