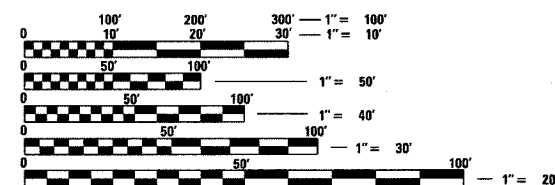
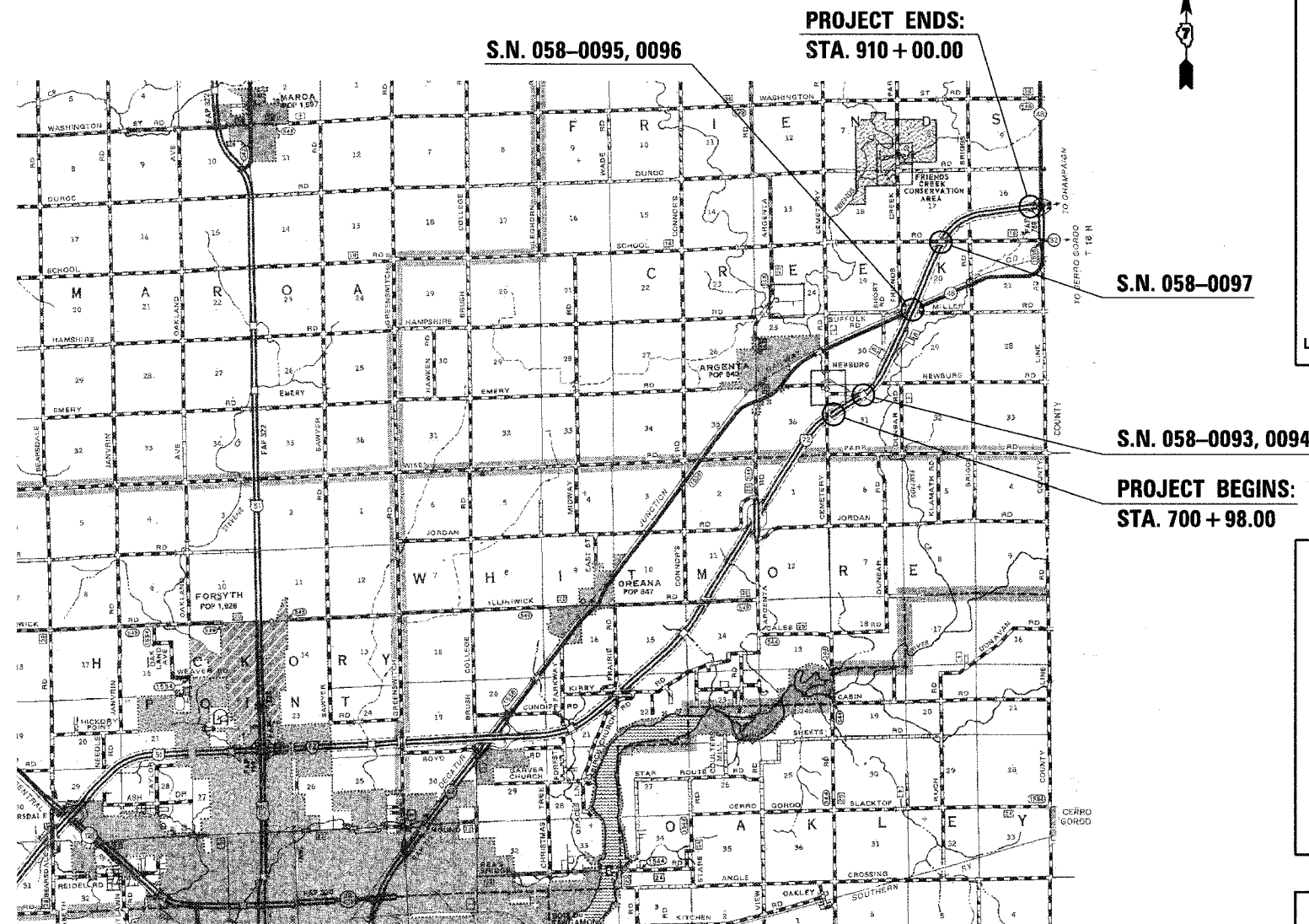
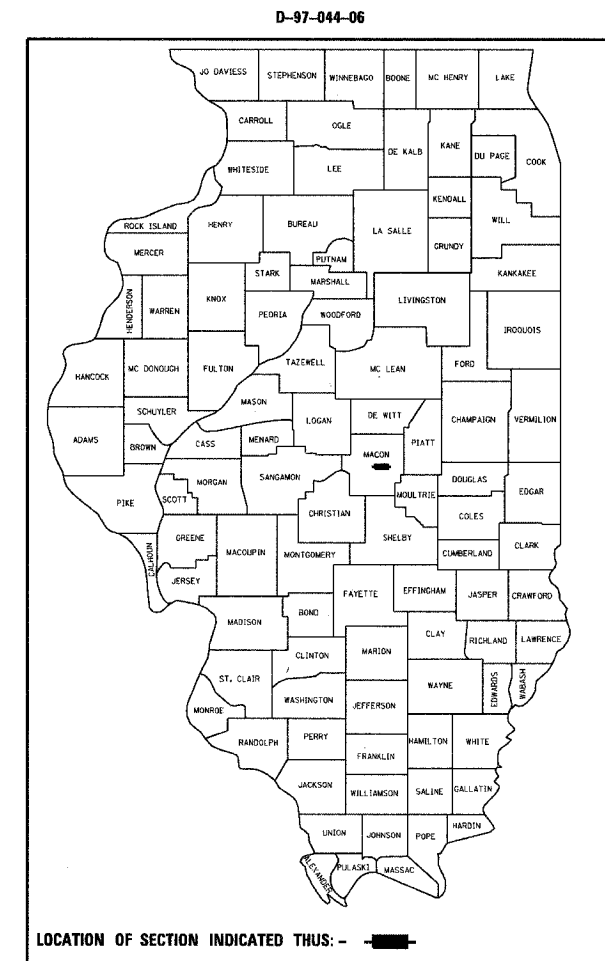


STATE OF ILLINOIS  
 DEPARTMENT OF TRANSPORTATION  
 DIVISION OF HIGHWAYS  
**PROPOSED  
 HIGHWAY PLANS**

FOR INDEX OF SHEETS, SEE SHEET NO. 2

F.A.I. ROUTE 72  
 SECTION (58,74)(66,67)RS-1  
 PROJECT: IM-072-1(073)150  
 MACON COUNTY  
 C-97-082-06

F.A.I. RTE.	SECTION	COUNTY	TOTAL SHEETS	SHEET NO.
72	(58,74)(66,67)RS-1	MACON	88	1
FED. ROAD DIST. NO.	ILLINOIS	CONTRACT NO. 74171		



FULL SIZE PLANS HAVE BEEN PREPARED USING STANDARD ENGINEERING SCALES. REDUCED SIZED PLANS WILL NOT CONFORM TO STANDARD SCALES. IN MAKING MEASUREMENTS ON REDUCED PLANS, THE ABOVE SCALES MAY BE USED.

J.U.L.I.E.  
 JOINT UTILITY LOCATION INFORMATION FOR EXCAVATION  
 1-800-892-0123  
 OR 811

TOWNSHIP: FRIENDS CREEK  
 PROJECT ENGINEER - TOM RONAN  
 PROJECT MANAGER - JEFF DAVISON  
 ADT = 10,533  
 CONTRACT NO. 74171

GROSS LENGTH = 20,902 FT. = 3.96 MI.  
 NET LENGTH = 20,902 FT. = 3.96 MI.

STATE OF ILLINOIS  
 DEPARTMENT OF TRANSPORTATION  
 DIVISION OF HIGHWAYS

SUBMITTED March 21, 2008  
Christina M. Reed  
 DEPUTY DIRECTOR OF HIGHWAYS, REGION ENGINEER

May 9, 2008  
Eric E. Harrel  
 INTERIM ENGINEER OF DESIGN AND ENVIRONMENT

May 9, 2008  
Christina M. Reed  
 DIRECTOR OF HIGHWAYS, CHIEF ENGINEER

PRINTED BY THE AUTHORITY  
 OF THE STATE OF ILLINOIS