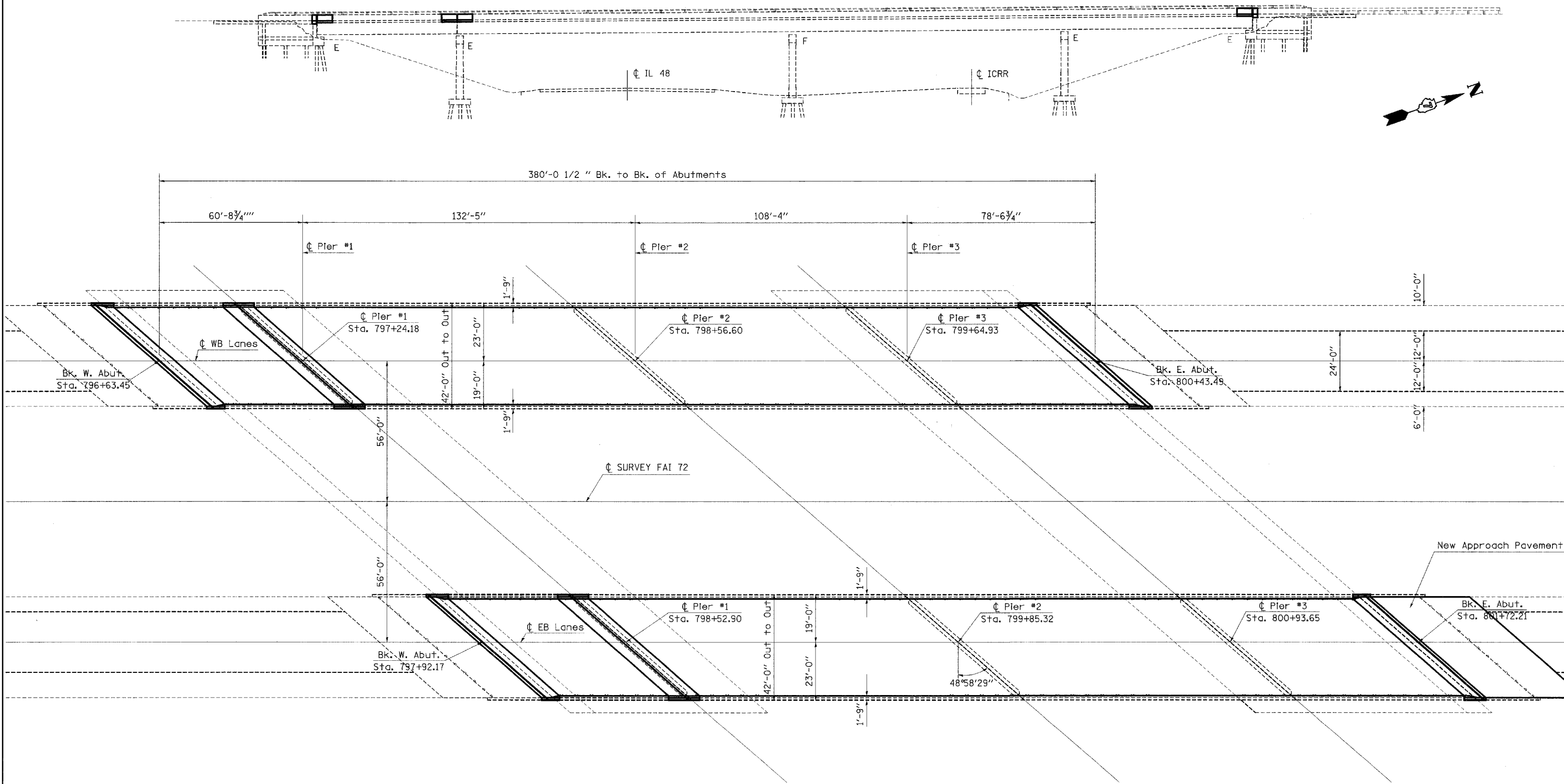


The existing 3 span steel mult-beam structures were constructed in 1975 as section 58-66HVB. SN 058-0095 carries FAI-72 eastbound and SN 085-0096 carries FAI-72 westbound. The proposed project consists of new expansion joints, partial and full depth deck patching, remove and replace bearings at abutments, new microsilica wearing surface, new deck drains and structural repair of concrete. A new approach pavement will be constructed on the east end of SN 058-0095 (EB).



FILE NAME = c:\projects\74171d\karenbridge.dgn	USER NAME = swartzw	DESIGNED -	REVISED -
	PLLOT SCALE = 20,0000' / IN.	DRAWN -	REVISED -
	PLLOT DATE = 3/28/2008	CHECKED -	REVISED -
		DATE -	REVISED -

**STATE OF ILLINOIS
DEPARTMENT OF TRANSPORTATION**

GENERAL PLAN & ELEVATION			
SN 058-0095 (EB) & SN 058-0096 (WB)			
SCALE: N/A	SHEET NO. 19 OF 52 SHEETS	STA.	TO STA.

F.A.I. RTE.	SECTION	COUNTY	TOTAL SHEETS	SHEET NO.
72	(58,74X66,67)RS-1	MACON	88	19
FED. ROAD DIST. NO.	ILLINOIS FED. AID PROJECT	CONTRACT NO. 741		

SHEET NO. 19 OF 52 SHEETS