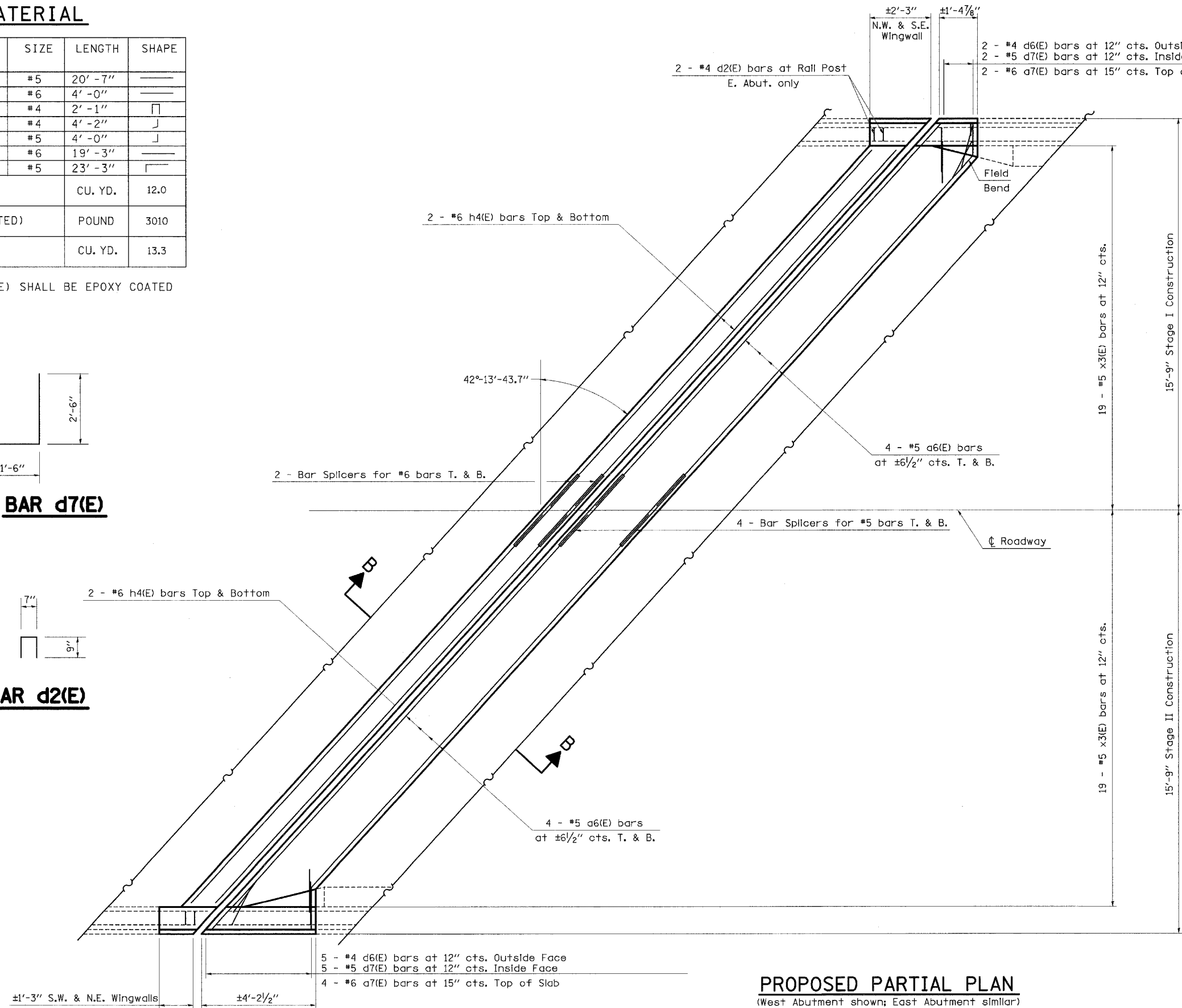
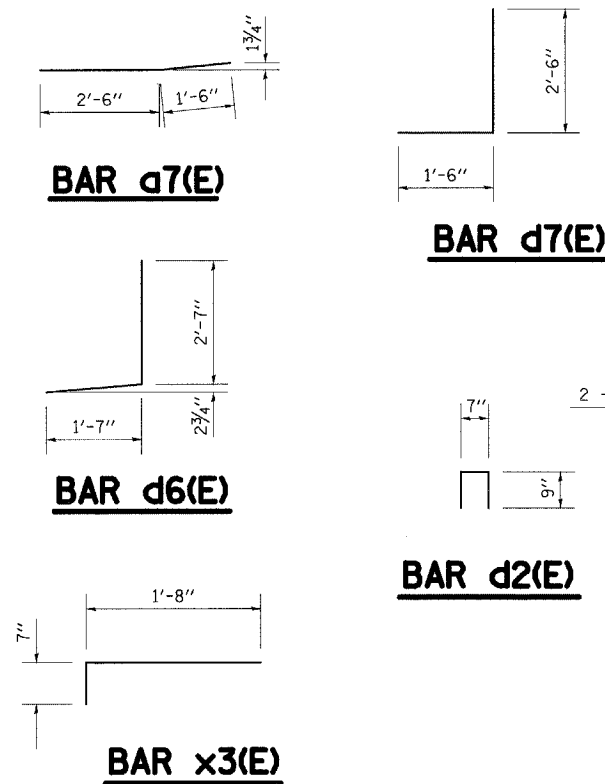


**BILL OF MATERIAL**

BAR	NUMBER OF BARS		TOTAL	SIZE	LENGTH	SHAPE
	STAGE I	STAGE II				
a6(E)	16	16	32	#5	20' - 7"	—
a7(E)	6	6	12	#6	4' - 0"	—
d2(E)	2	2	4	#4	2' - 1"	□
d6(E)	7	7	14	#4	4' - 2"	J
d7(E)	7	7	14	#5	4' - 0"	J
h4(E)	8	8	16	#6	19' - 3"	—
x3(E)	38	38	72	#5	23' - 3"	□
CONCRETE REMOVAL					CU. YD.	12.0
REINFORCEMENT BARS (EPOXY COATED)					POUND	3010
CONCRETE SUPERSTRUCTURE					CU. YD.	13.3

REINFORCEMENT BARS DESIGNATED (E) SHALL BE EPOXY COATED



**PROPOSED PARTIAL PLAN**  
 (West Abutment shown; East Abutment similar)

FILE NAME = c:\projects\74171d\kenenbridge.dgn	USER NAME = swartzrw	DESIGNED -	REVISED -
		DRAWN -	REVISED -
	PLOT SCALE = 20,000.0' / IN.	CHECKED -	REVISED -
	PLOT DATE = 3/28/2008	DATE -	REVISED -

**STATE OF ILLINOIS**  
**DEPARTMENT OF TRANSPORTATION**

<b>EXPANSION JOINT REPLACEMENT DETAILS</b>			
<b>SN 058-0097</b>			
SCALE: N/A	SHEET NO. 39 OF 52 SHEETS	STA. TO STA.	

F.A.I. RTE. 72	SECTION (58,74X66,67)RS-1	COUNTY MACON	TOTAL SHEETS 88	SHEET NO. 52
FED. ROAD DIST. NO. ILLINOIS FED. AID PROJECT			CONTRACT NO. 741	

