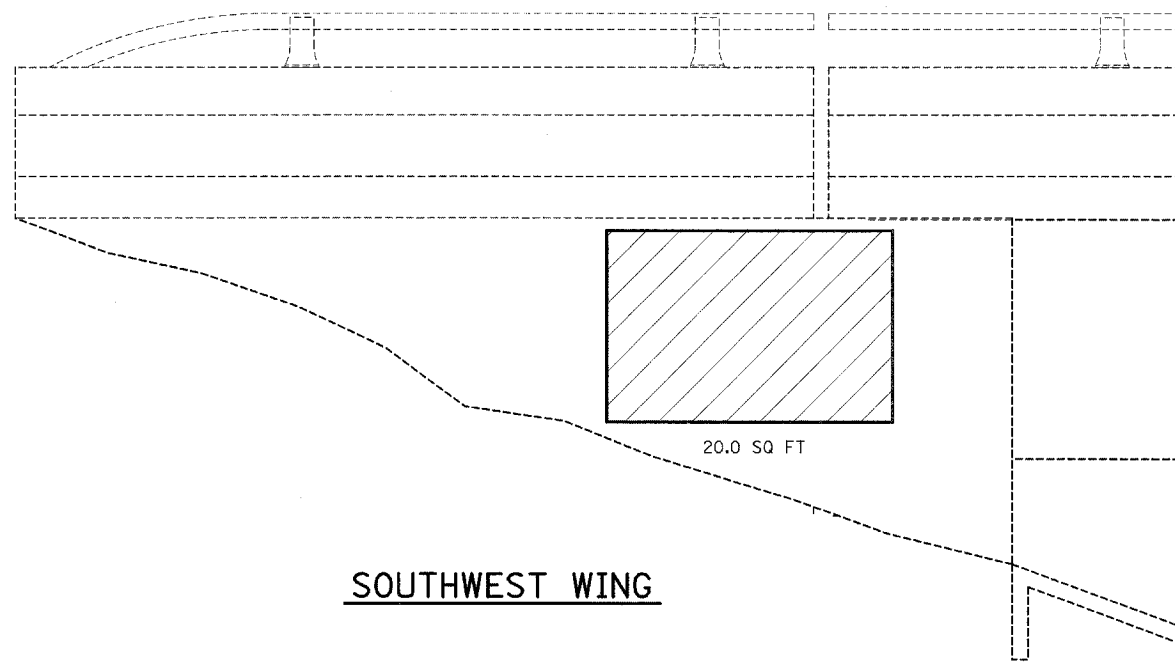
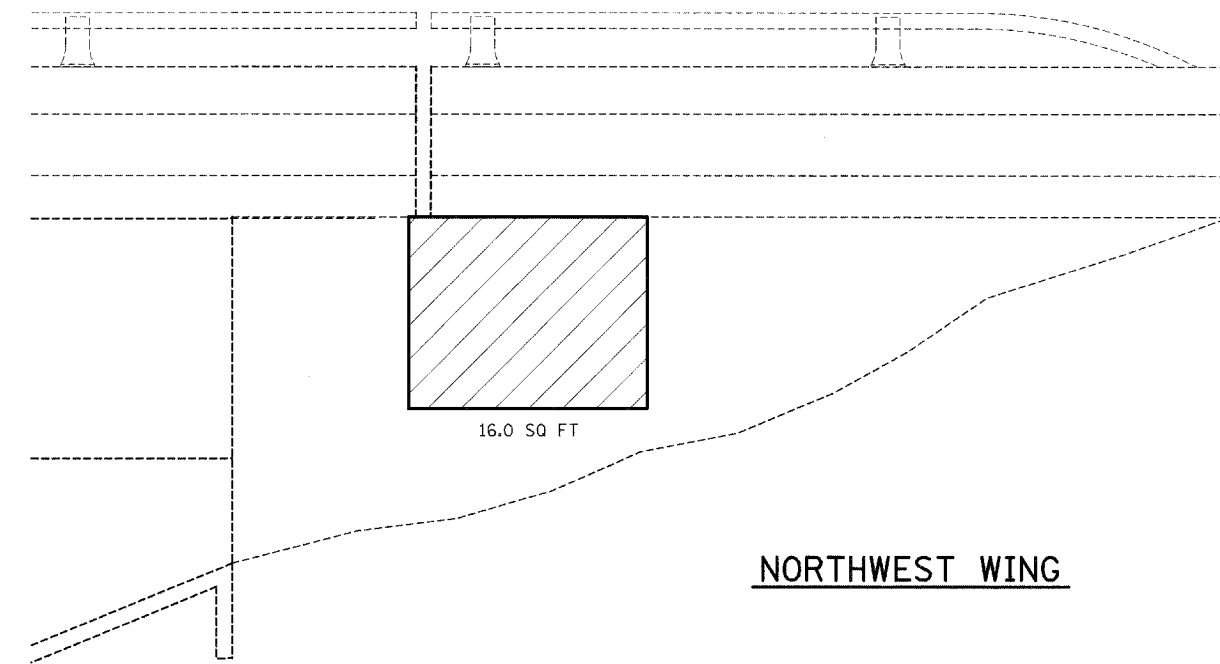


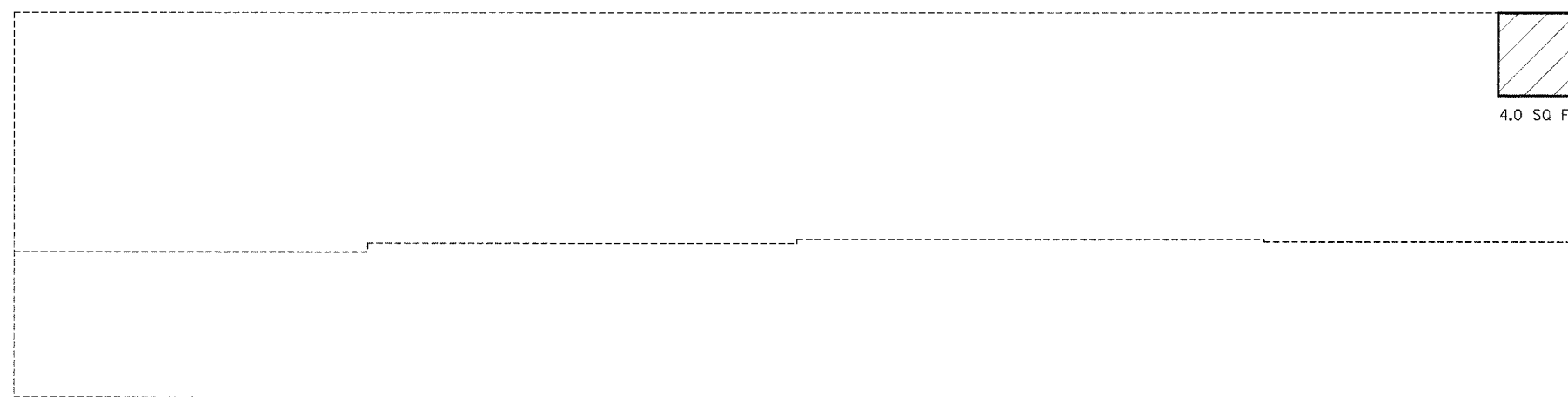
NOTE: QUANTITIES ARE ESTIMATED. ACTUAL QUANTITIES TO BE DETERMINED BY THE RESIDENT ENGINEER.



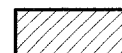
SOUTHWEST WING



NORTHWEST WING



WEST ABUTMENT FACE



Structural Repair of Concrete (Depth < 5")

FILE NAME = c:\projects\174171d\karenbridge.dgn	USER NAME = swartzrw	DESIGNED -	REVISED -
		DRAWN -	REVISED -
	PLOT SCALE = 20,0000 ' / IN.	CHECKED -	REVISED -
	PLOT DATE = 3/20/2008	DATE -	REVISED -

**STATE OF ILLINOIS  
DEPARTMENT OF TRANSPORTATION**

**STRUCTURAL REPAIR - WEST ABUTMENT  
SN 058-0097**

SCALE: N/A SHEET NO. 44 OF 52 SHEETS STA. TO STA.

F.A.I. RTE.	SECTION	COUNTY	TOTAL SHEETS	SHEET NO.
72	(58,74X66,67)RS-1	MACON	88	6
FED. ROAD DIST. NO. ILLINOIS FED. AID PROJECT			CONTRACT NO. 741	

SHEET NO.  
52 SHEET