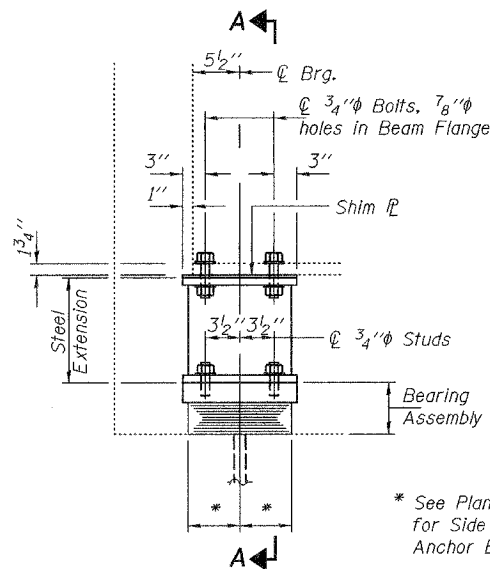


STATE OF ILLINOIS
DEPARTMENT OF TRANSPORTATION

ROUTE NO.	SECTION	COUNTY	POST MILE	POST MILE	SHEET NO. 2
FAI 72		MACON	88	72	2 SHEETS
FED. ROAD DIST. NO. 7	ILLINOIS	FED. AID PROJECT-			

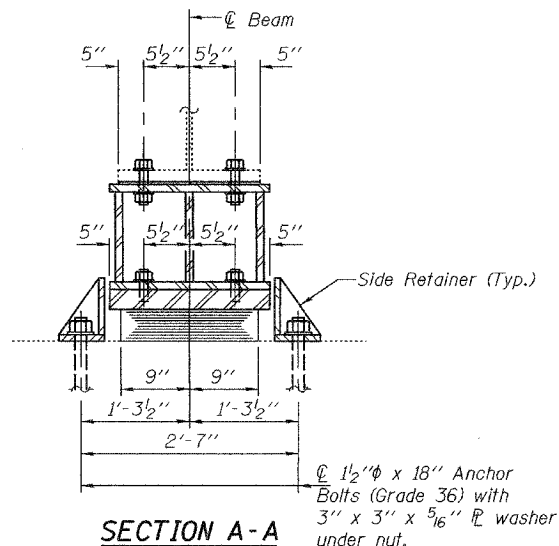
Contract Number: 74171



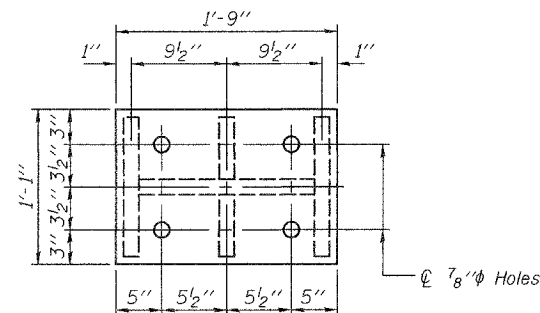
ELEVATION AT ABUTMENTS

TYPE I ELASTOMERIC EXP. BRG.

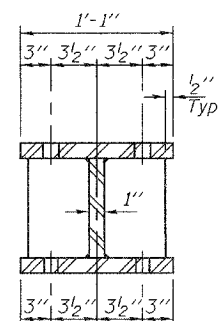
* See Plan View Detail for Side Retainer and Anchor Bolt placement



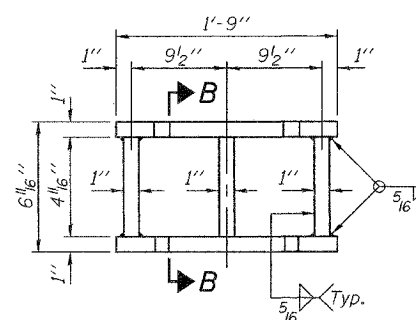
SECTION A-A



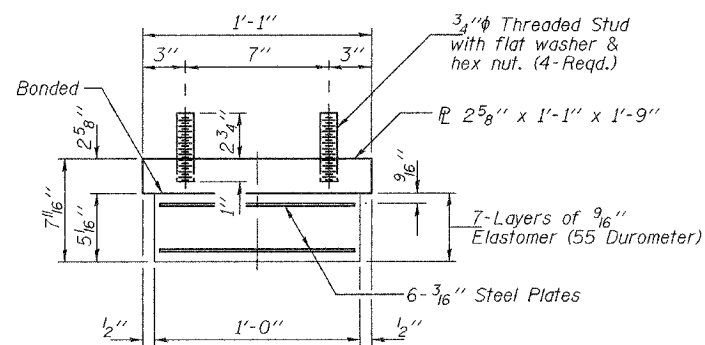
PLAN TOP AND BOTTOM PLATE



SECTION B-B

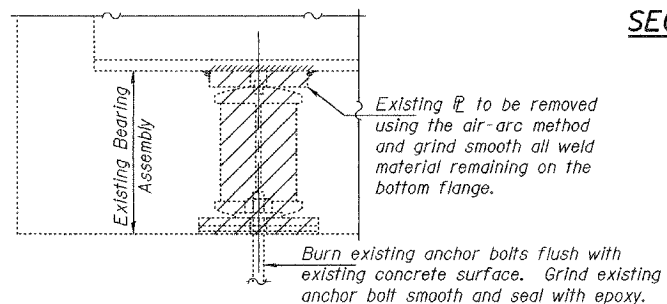


STEEL EXTENSION DETAIL



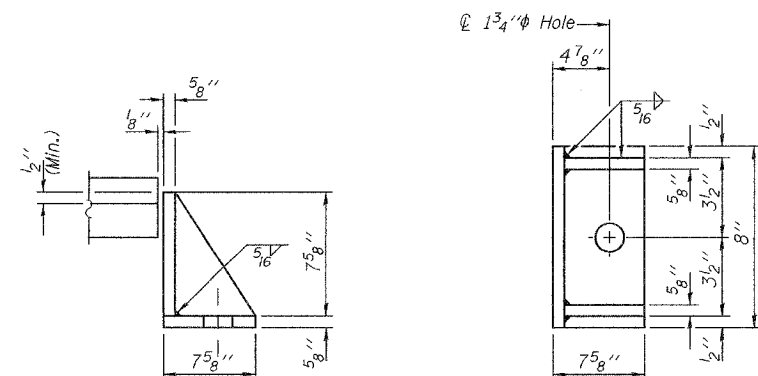
BEARING ASSEMBLY

Note:
Shim plates shall not be placed under Bearing Assembly.



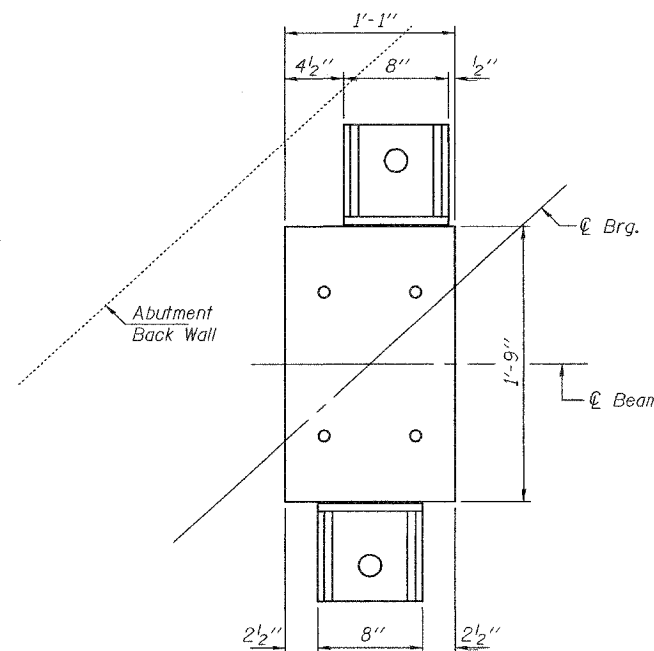
EXISTING BEARING REMOVAL DETAIL

Cost included with Jack and Remove Existing Bearings.



SIDE RETAINER

Equivalent rolled angle with stiffeners will be allowed in lieu of welded plates.



PLAN VIEW SHOWING
PLACEMENT OF SIDE RETAINERS

Notes:
Diaphragm removal and installation may be required to facilitate drilling holes. Cost included with Furnishing and Erecting Structural Steel.
New steel extensions, shim plates and connection bolts are included with Furnishing and Erecting Structural Steel.
Prior to ordering any material, the Contractor shall verify in the field all bearing height and shim thickness dimensions. Min. jack capacity = 80 Tons for the West Abutment and 90 Tons for the East Abutment.
Anchor bolts shall be ASTM F1554 all-thread (or an Engineer-approved alternate material) of the grade(s) and diameter(s) specified. ASTM A307 Grade C anchor bolts may be used in lieu of ASTM F1554 Grade 36 (Fy=36ksi). The corresponding specified grade of AASHTO M314 anchor bolts may be used in lieu of ASTM F1554.
Side retainers shall be included in the cost of Elastomeric Bearing Assembly, Type I.
Drilled and set anchor bolts shall be installed according to Article 521.06 of the Standard Specifications.

SHIM PLATES

WEST ABUTMENT	
Girder 1	1/4" x 13" x 21"

EAST ABUTMENT	
Girder 3	3/8" x 13" x 21"

WEST ABUTMENT
BEAM REACTIONS

R _P	(K)	84.8
R _L	(K)	37.2
Imp.	(K)	6.7
R (Total)	(K)	128.7

EAST ABUTMENT
BEAM REACTIONS

R _P	(K)	93.5
R _L	(K)	38.4
Imp.	(K)	6.9
R (Total)	(K)	138.8

BILL OF MATERIAL

Item	Unit	Total
Elastomeric Bearing Assembly Type I	Each	8
Jack and Remove Existing Bearings	Each	8
Furnishing and Erecting Structural Steel	Pound	1900
Anchor Bolts, 1 1/2"φ	Each	16

ABUTMENT BEARING
REPLACEMENT DETAILS
CH. 18 OVER FAI RT. 72
MACON COUNTY
SN 058-0097

DESIGNED	AJB
CHECKED	SJB
DRAWN	Steffen
CHECKED	AJB SJB

APRIL 18, 2008
EXAMINED *Carl Proyer*
ENGINEER OF STRUCTURAL SERVICES
PASSED *Ralph E. Anderson*
ENGINEER OF BRIDGES AND STRUCTURES